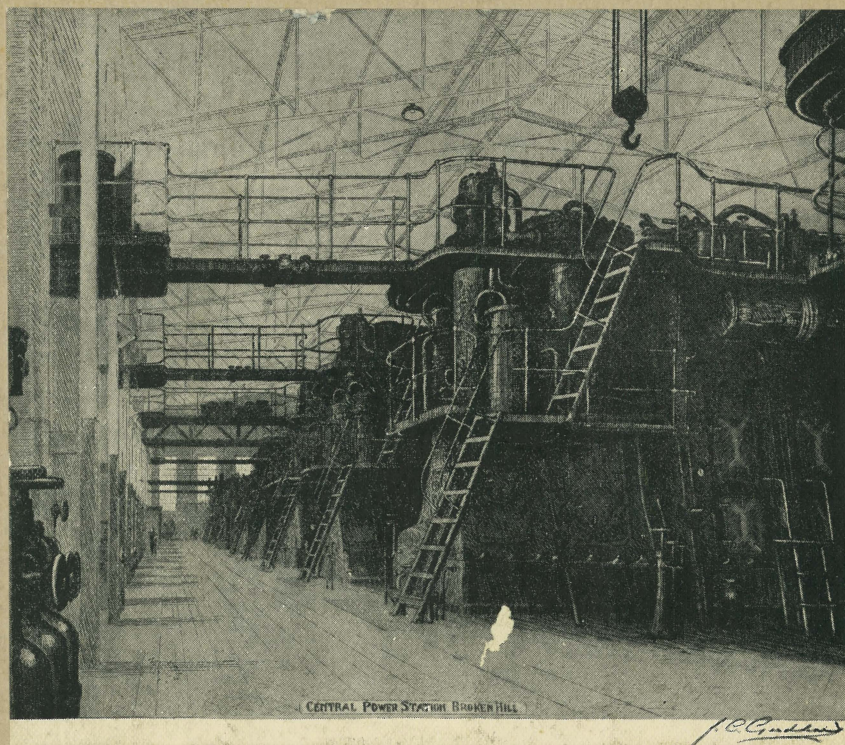


m107/B/1264

# A SOUVENIR OF BROKEN HILL



ETCHINGS

BY J. C. GOODHART





A Broken Hill dust storm 1909



No. 539

J. O. Quaker





HIS LITTLE SOUVENIR OF BROKEN HILL contains some typical examples of the work of J. C. GOODHART, who has lived in the Silver City for over 30 years. The reproductions are from his etchings of the various mines and works along the line of lode and should serve to give some idea of the extensive mining operations carried on on this field.

Mr. Goodhart is a South Australian, born in Adelaide. He has always had a penchant for Art and has painted both in oils and watercolour, but it was not until the year 1925 that he decided to take up Etching. His press was made in one of the fitting shops on the mines.

He had just received his first parcel of Copper, Chemicals and other gear necessary to make a start when Mr. John Goodchild happened to pay a flying visit to Broken Hill.

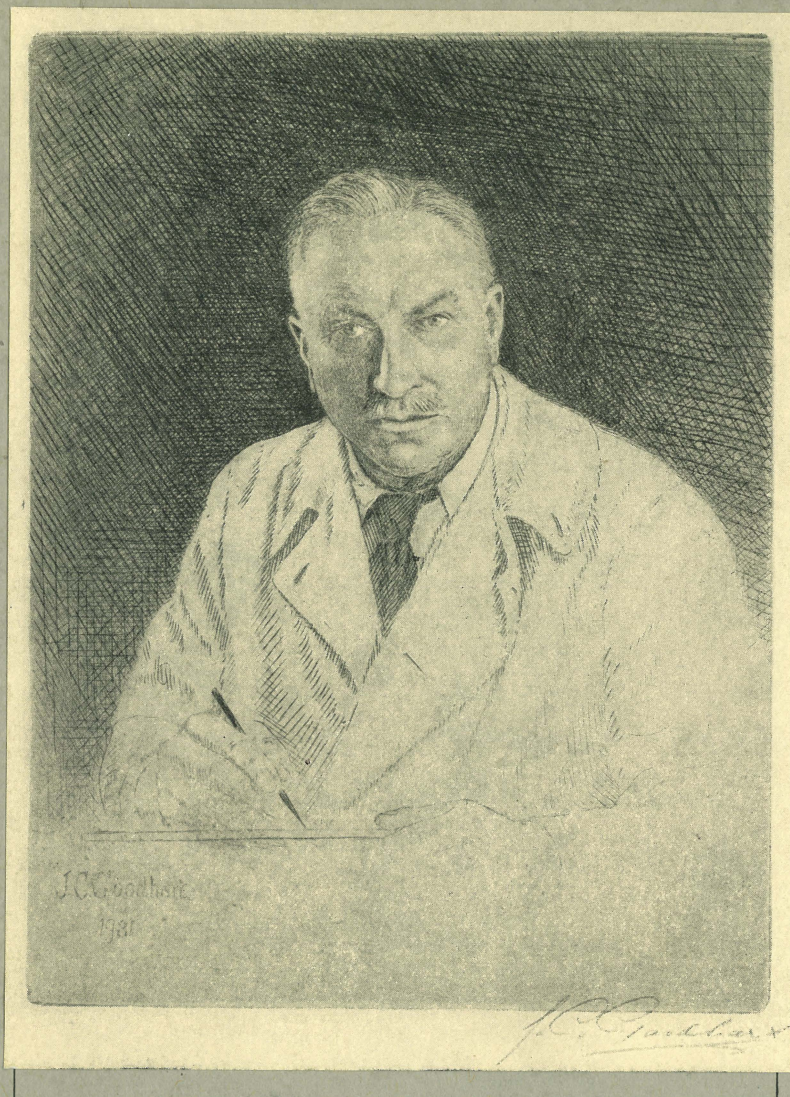
That night they unpacked the parcel and set to work. Mr. Goodchild, taking a piece of copper, laid the etching ground, drew a picture, bit the plate, and in the early hours of the morning they pulled a proof with the help of the domestic mangle.

From then on Goodhart settled down to work with the etching needle, and by careful study of the various books on the subject, and by many experiments he went on from strength to strength until the year 1929 when he submitted two of his mining subjects to the Paris Salon. Both these pictures were accepted and hung on the line.

Since then his work has been acquired by the Melbourne, Adelaide, Hobart, Auckland and Broken Hill Art Galleries.

The Commonwealth Government purchased a set of his mining subjects for the "Australiana" collection at Canberra, so that when the mines have been all worked out and forgotten, Broken Hill will still be remembered by the art of J. C. Goodhart.





Self Portrait.  
(Drypoint)





HIS LITTLE SOUVENIR OF BROKEN HILL contains some typical examples of the work of J. C. GOODHART, who has lived in the Silver City for over 30 years. The reproductions are from his etchings of the various mines and works along the line of lode and should serve to give some idea of the extensive mining operations carried on on this field.

Mr. Goodhart is a South Australian, born in Adelaide. He has always had a penchant for Art and has painted both in oils and watercolour, but it was not until the year 1925 that he decided to take up Etching. His press was made in one of the fitting shops on the mines.

He had just received his first parcel of Copper, Chemicals and other gear necessary to make a start when Mr. John Goodchild happened to pay a flying visit to Broken Hill.

That night they unpacked the parcel and set to work. Mr. Goodchild, taking a piece of copper, laid the etching ground, drew a picture, bit the plate, and in the early hours of the morning they pulled a proof with the help of the domestic mangle.

From then on Goodhart settled down to work with the etching needle, and by careful study of the various books on the subject, and by many experiments he went on from strength to strength until the year 1929 when he submitted two of his mining subjects to the Paris Salon. Both these pictures were accepted and hung on the line.

Since then his work has been acquired by the Melbourne, Adelaide, Hobart, Auckland and Broken Hill Art Galleries.

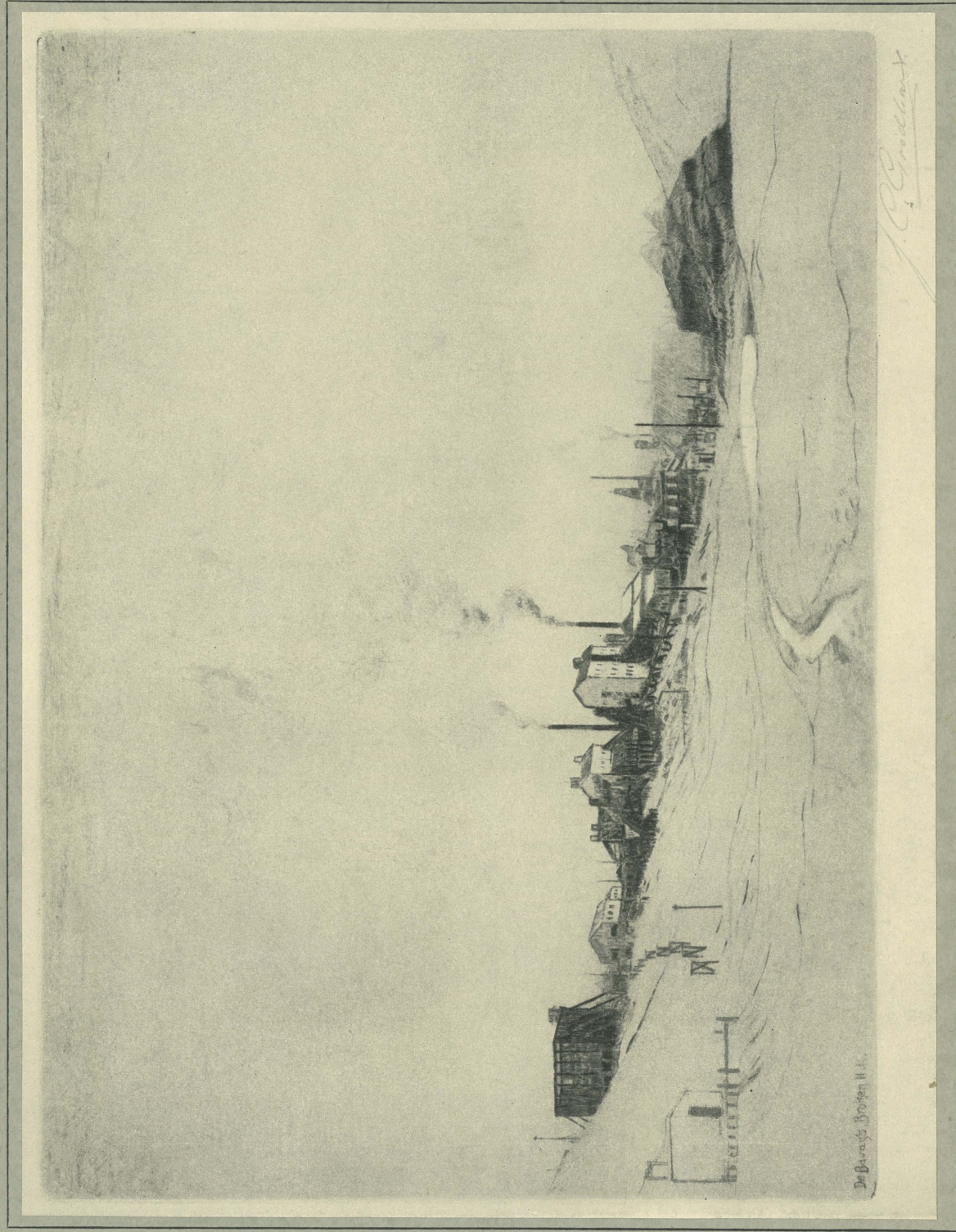
The Commonwealth Government purchased a set of his mining subjects for the "Australiana" collection at Canberra, so that when the mines have been all worked out and forgotten, Broken Hill will still be remembered by the art of J. C. Goodhart.





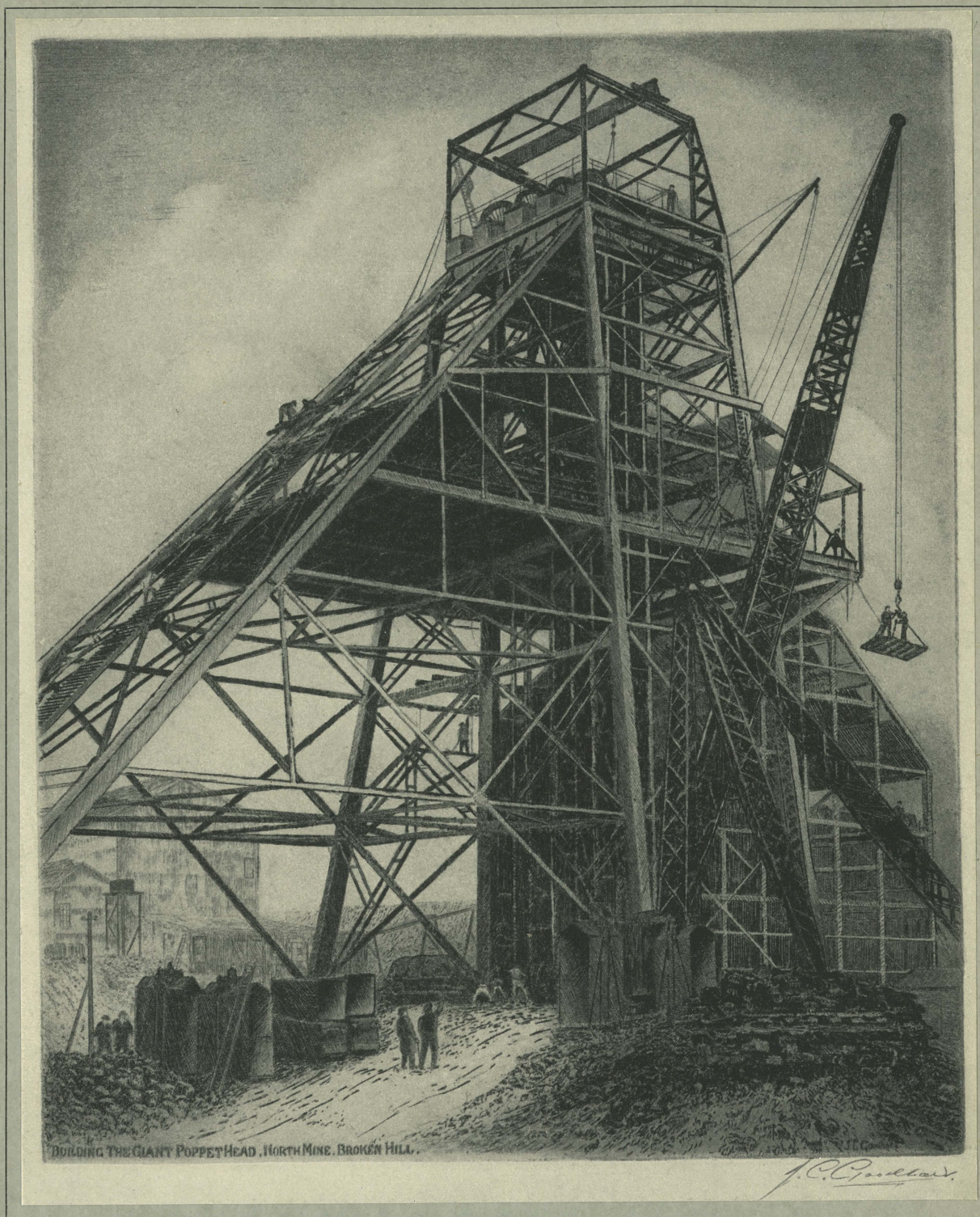
The South Blocks Mine,  
Zinc Corporation, Broken Hill.





De Bavay's Treatment Plant, Broken Hill.





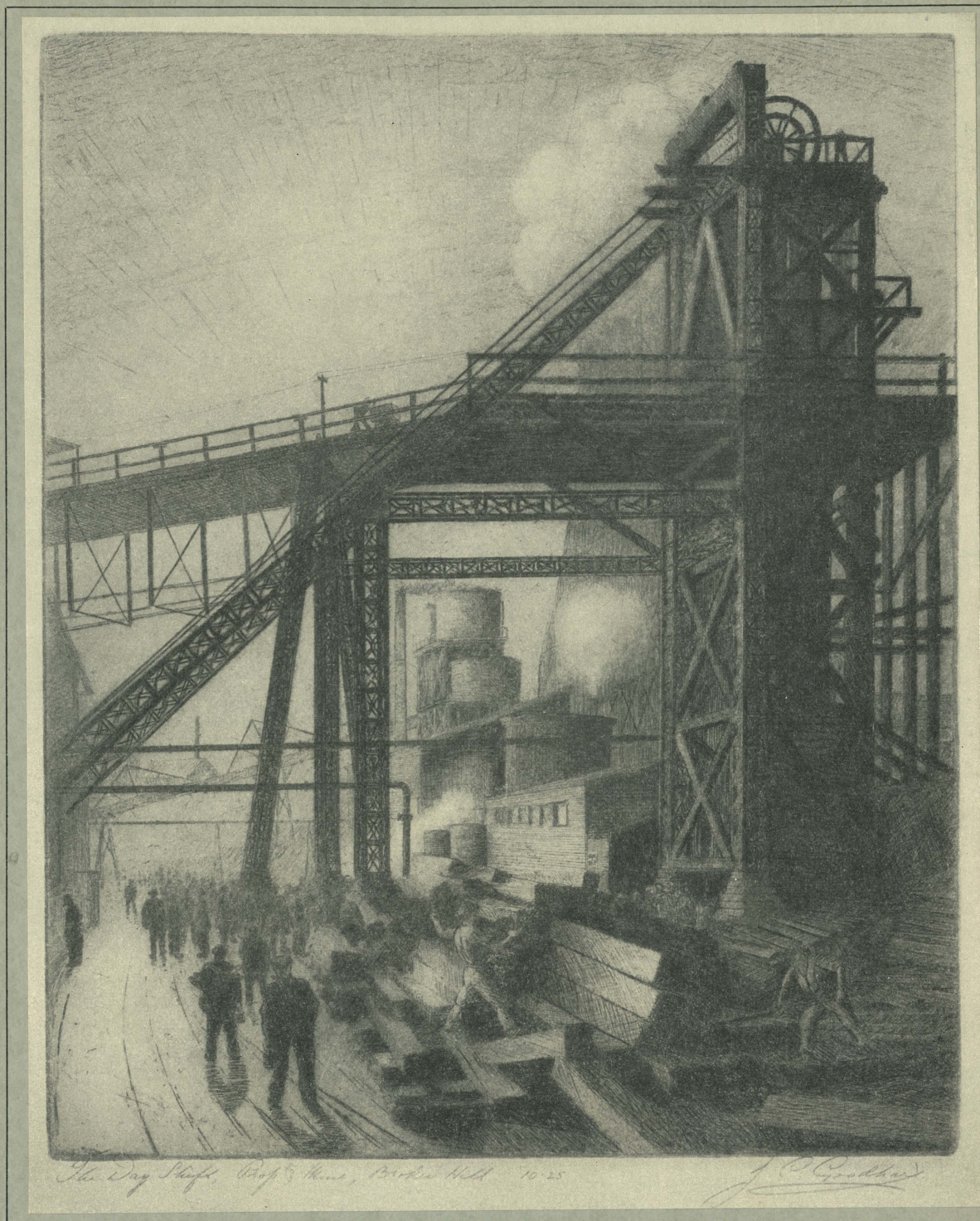
The Giant Poppet Head,  
North Mine, Broken Hill.





Northern Group of Broken Hill Mines.



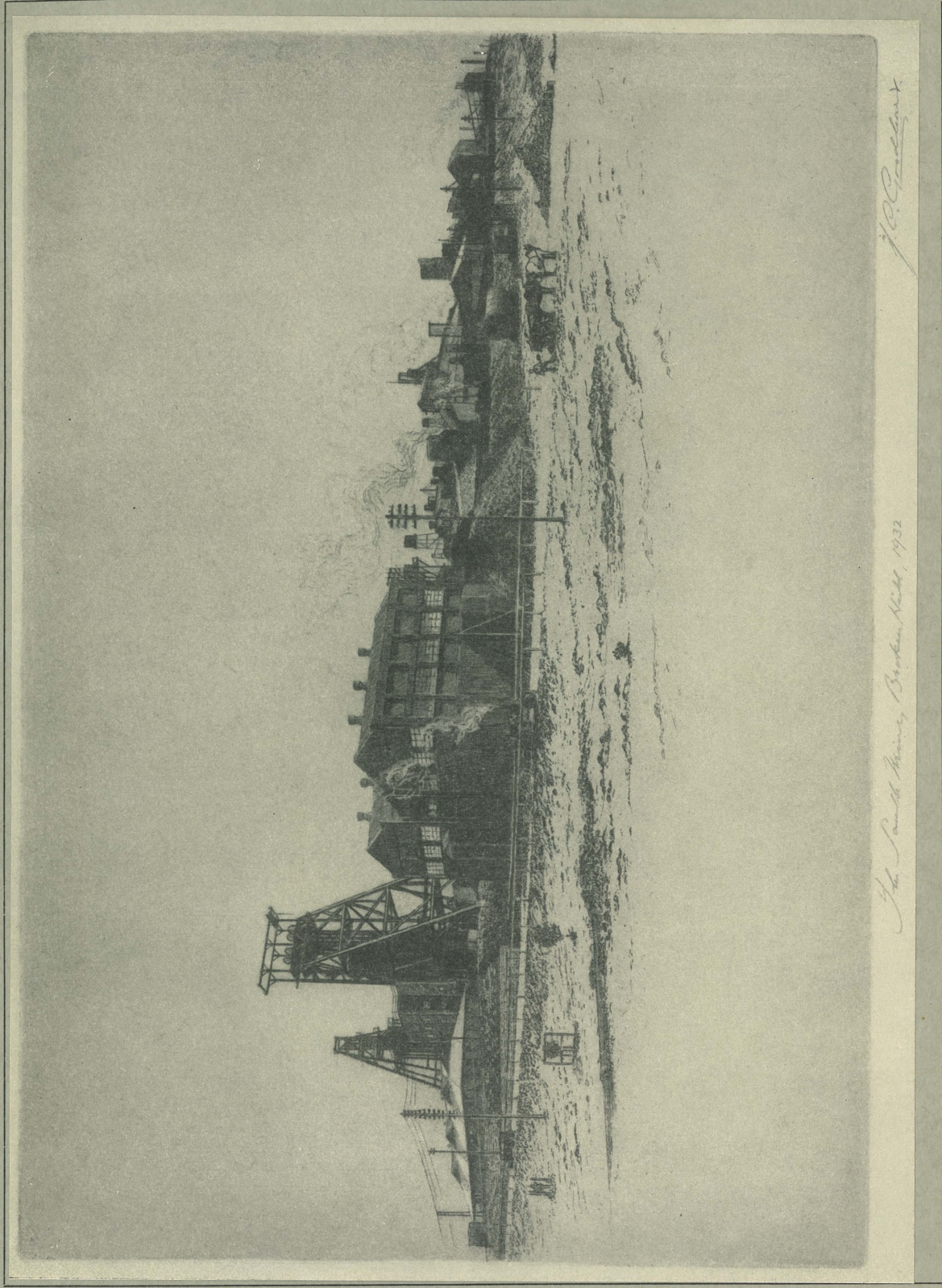


*The Day Shift, Proprietary Mine, Broken Hill 10-25*

*J. P. Gould*

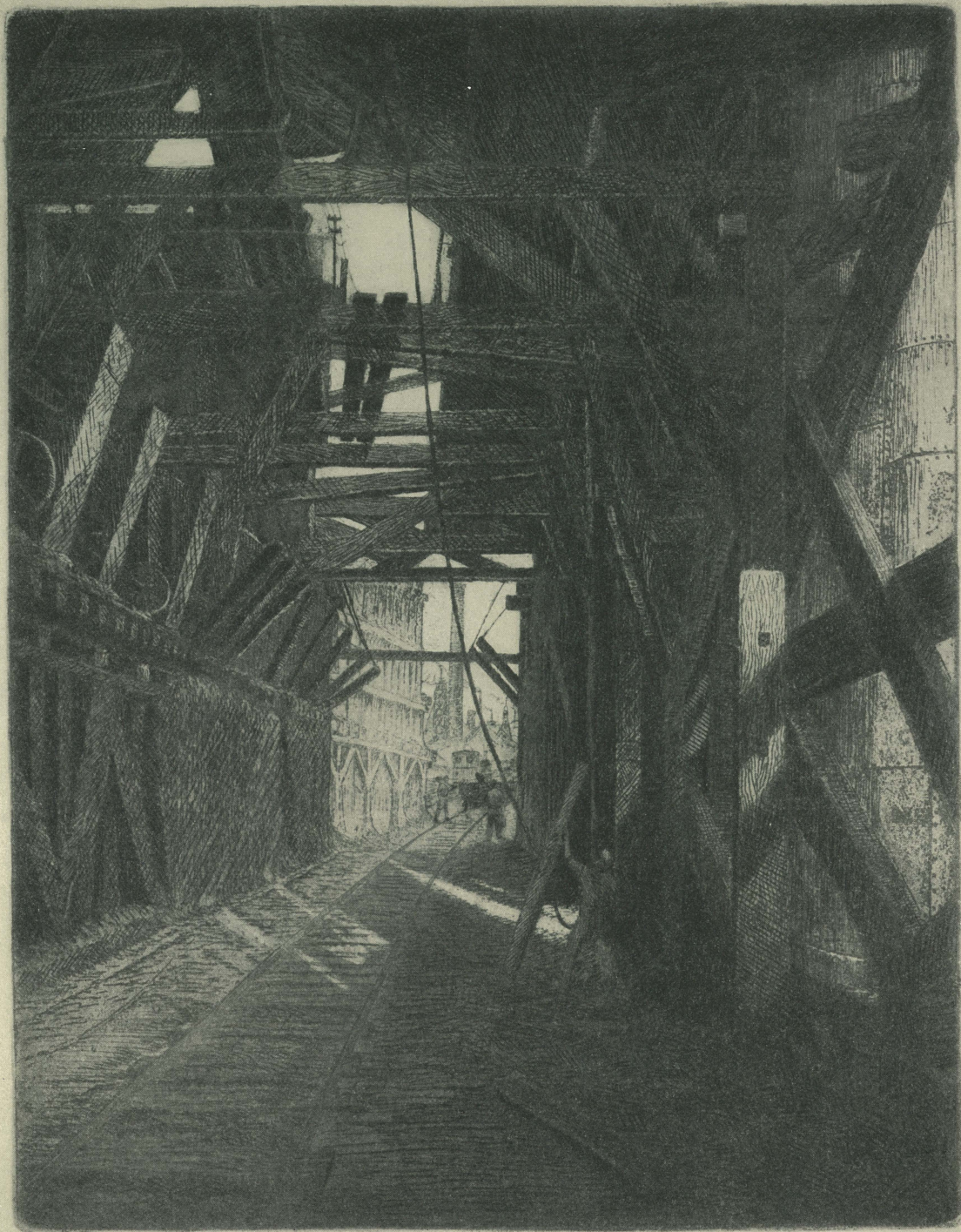
The Day Shift, Proprietary Mine, Broken Hill.  
"Stewarts," the timber shaft.





The South Mine, Broken Hill, 1932.





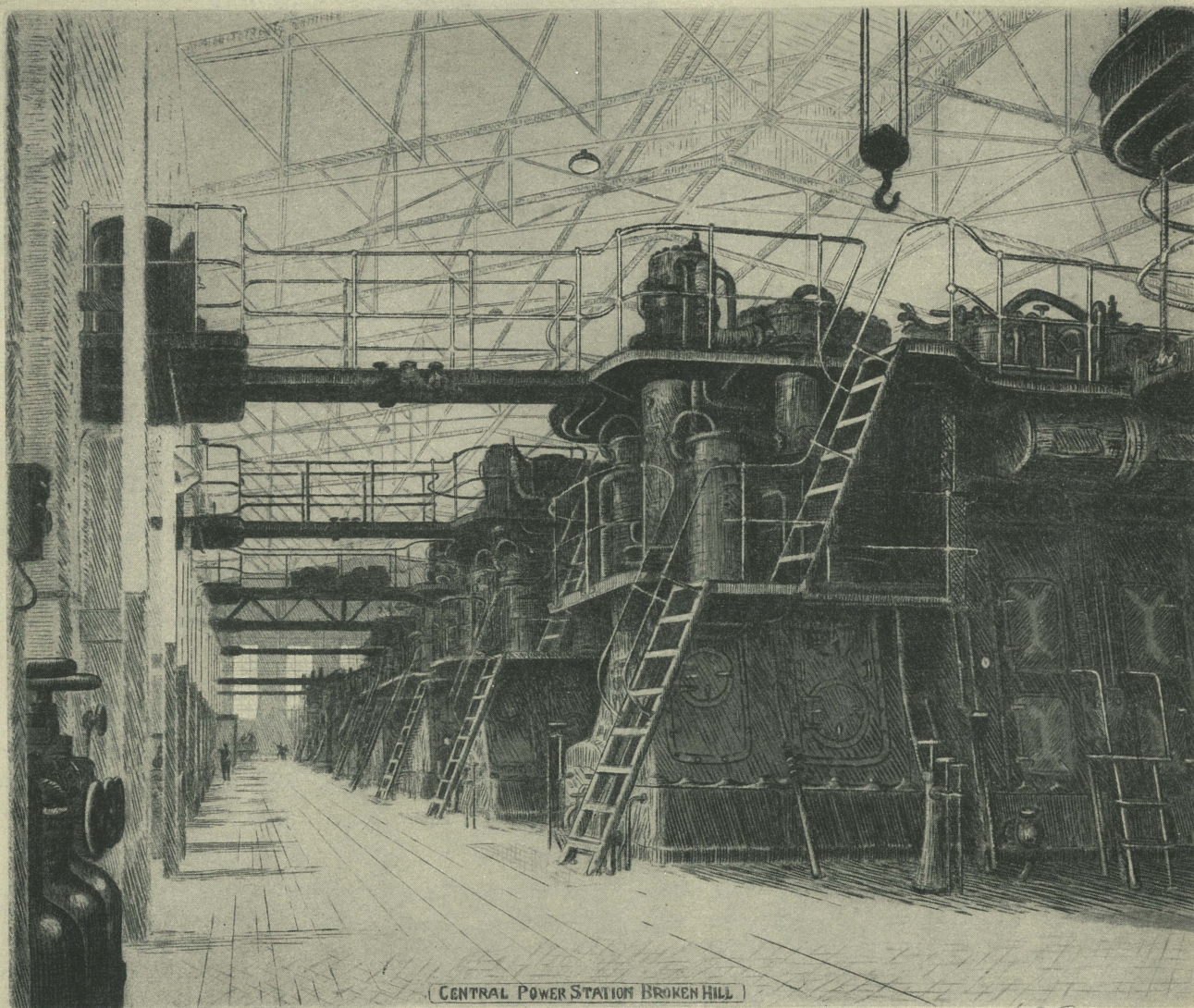
Proprietary Mine, Broken Hill.

"Klondyke"

J. P. Goodland.

"Klondyke"  
Ore Bins, Proprietary Mine, Broken Hill.





CENTRAL POWER STATION BROKEN HILL

J.C. Chubb

The Central Power Station.  
The largest initial oil engine plant  
in the world.





The Open Cut,  
Proprietary Mine, Broken Hill.





Delprat's Shaft, Proprietary Mine, Broken Hill.

*The Poppet Head*

*J. C. Goodhart*

"The Poppet Head,"  
Delprat's Shaft, Proprietary Mine,  
Broken Hill.