

# Media Tour to Nickel West

Kalgoorlie Nickel Smelter & Concentrator (KNSC)

Simon Hay – Acting General Manager KNSC

21 September 2007



**bhpbilliton**

# Disclaimer

The views expressed here contain information derived from publicly available sources that have not been independently verified. No representation or warranty is made as to the accuracy, completeness or reliability of the information. Any forward looking information in this presentation has been prepared on the basis of a number of assumptions which may prove to be incorrect. This presentation should not be relied upon as a recommendation or forecast by BHP Billiton.

Nothing in this release should be construed as either an offer to sell or a solicitation of an offer to buy or sell shares in any jurisdiction.

# Ore Reserves and Mineral Resources

The information in this presentation that relates to Ore Reserves and Mineral Resources is as at 30 June 2006 and is based on information prepared by the relevant Competent Persons. The Competent Persons agree with the form and context of the Mineral Resources and Ore Reserves presented. The complete tables of Ore Reserves and Mineral Resources as at 30 June 2006 (including the relevant Competent Persons) for Stainless Steel Materials are presented in the BHP Billiton Annual Report 2006 on pages 74 and 75.

# Agenda – KNSC Overview

- Safety contacts – group to reflect on recent safety learning
- Visitor safety
- Zero Harm - Health, Safety, Environment, Community & People
- Kalgoorlie Nickel Concentrator- Business, Products and Operations
- Kambalda Nickel Smelter - Business, Products and Operations
- Business Excellence
- Open Discussion

# Visitor Safety

- Stay with and follow the instruction of your guide at all times
- Wear the appropriate PPE as directed by your guide
- Carry your swipe card with you at all times
- Take care on uneven ground and stairs
- Emergency – telephone “45”, radio channel “1”

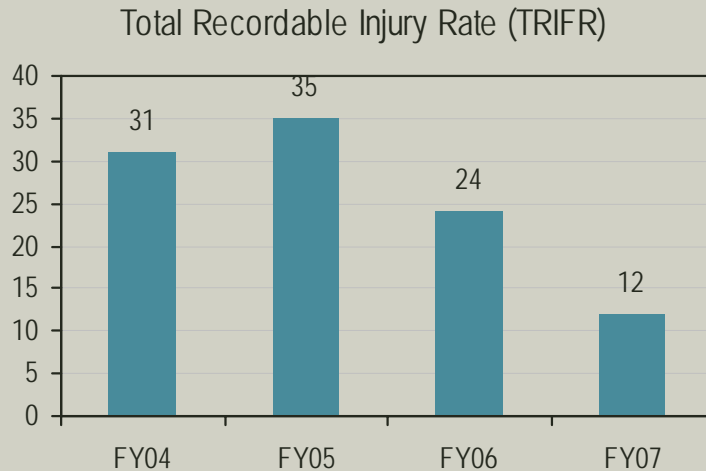
Take Time – Take Charge

# Our approach to Zero Harm

- Safety & health of our people is our core value
- Safety excellence is good business
- Commitment to environmental responsibility
- Employees, contractors, suppliers, customers, host communities share responsibility

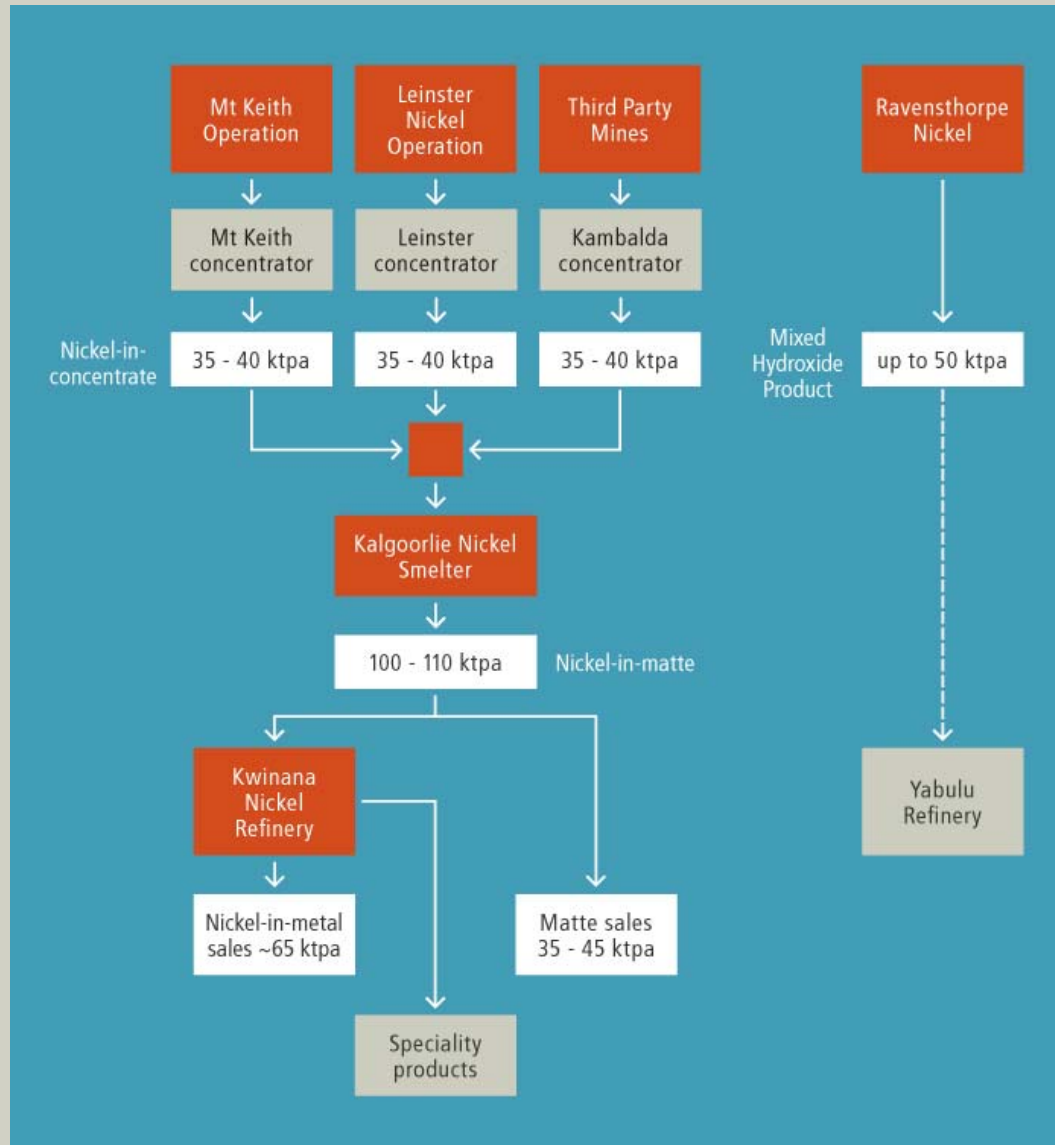


# KNSC Performance - Zero Harm



- Field Leadership / Hazard Reporting & Closeout
- BHP Billiton HSEC Management Standards & ISO 14001
- Fatal Risk Control Protocols
- Process Safety Risk Management
- No lost time cases in last 25 months at Smelter

# Nickel West flowchart





# Kambalda Nickel Concentrator – extended life of mining

- Mill throughput ~1.6 Mtpa
- 35-45 ktpa Ni in Conc. @ ~13% Ni grade
- Mining life extended from early 2000
- Output driven by nickel price & third party resource base
- Record throughput FY07



# Kalgoorlie Nickel Smelter

- Outokumpu flash smelter
- 750 Ktpa throughput capacity
- 10 year+ furnace campaign life
- Furnace re-brick expected ~2010
  - currently reviewing options
  - option to increase MgO tolerance
- Matte transported KNR and export 35%- 45% production via Fremantle
- Reached 2 million tonnes in FY07



# KNSC Performance - Business Excellence

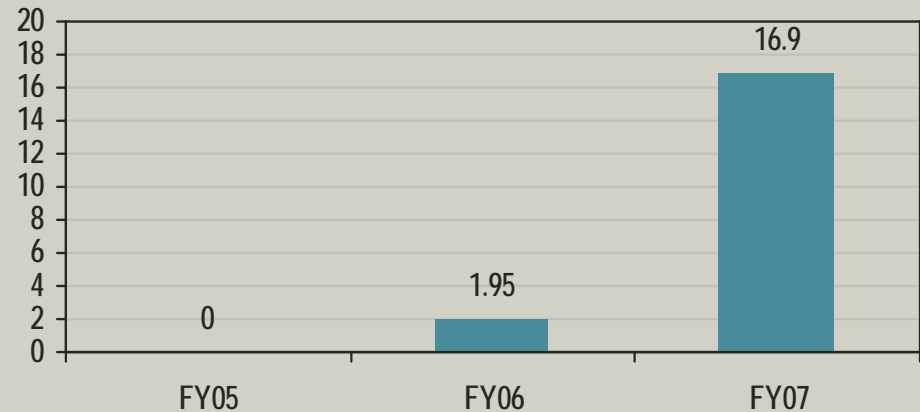
“Go for Green” initiative in place, focus on

- Zero Harm
- Volume
- Costs

## Case Studies

- Kambalda Nickel Concentrator Plant Recovery Optimisation
- Aimed to improve metal recovery by a 2.2% stretch target without compromising quality. This was achieved, delivering a benefit of US\$1.62M
- Flash Furnace roof replacement 2007
- Innovation, constructed while plant operational, no incidents

Benefits Realised (Annualised US\$M)



# KNSC Summary

- Zero Harm is our core value
- We operate a world class asset and a world class process
- We are building and retaining a talented workforce
- We are applying Business Excellence to our operations
- We focus on margin maximisation

# Open discussion

