

Caval Ridge Mine Horse Pit Extension

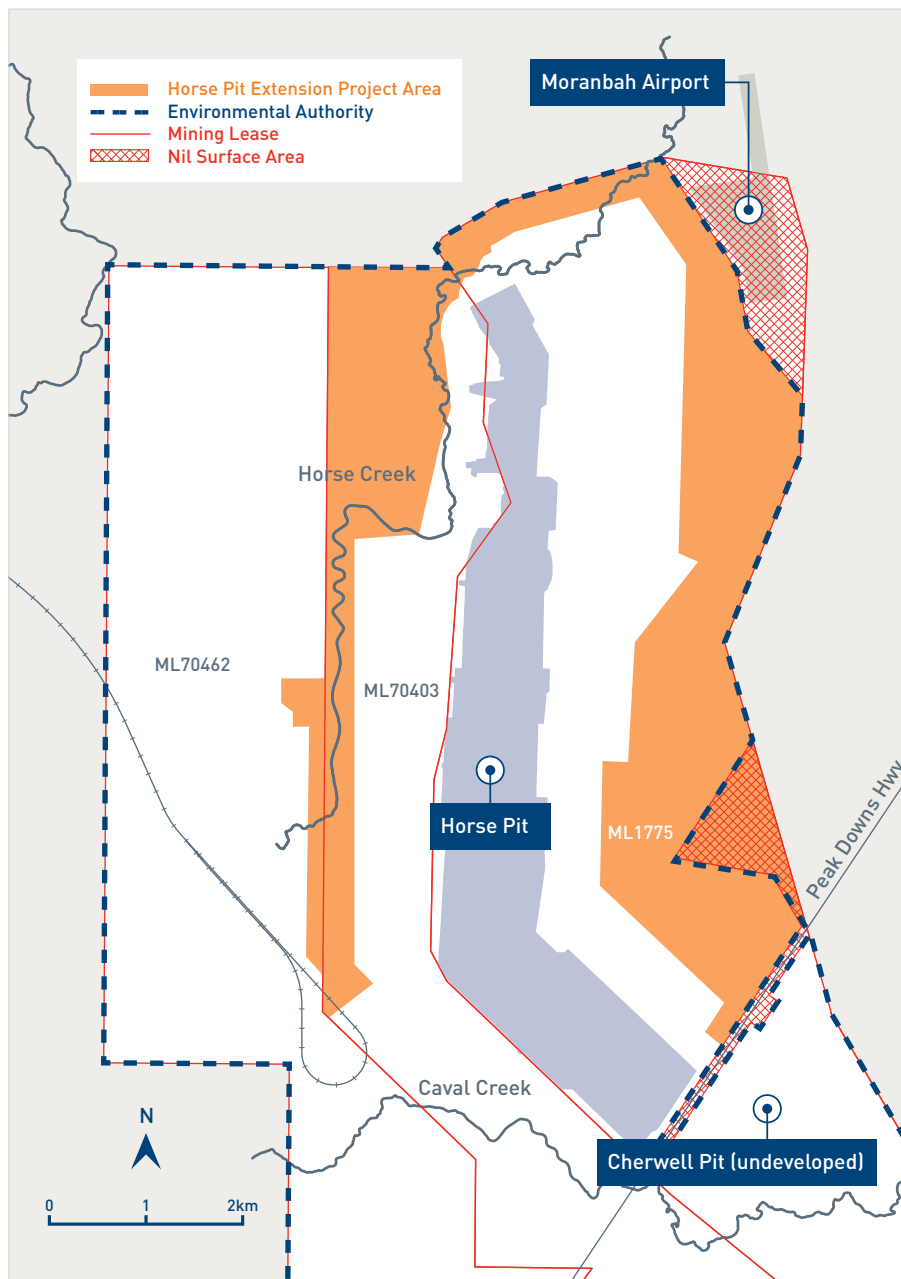


BHP Mitsubishi Alliance

The BHP Mitsubishi Alliance (BMA) Horse Pit Extension project is located within the mining lease boundaries of the Caval Ridge Mine, located approximately five kilometres south-west of Moranbah, Central Queensland.

BMA are developing project approval applications for the State and Commonwealth approval processes to secure future mining approval. If approved, the extension is projected to extend the mine's life from the 2030s to the 2050s, protecting jobs and royalties for years to come.

By utilising existing capacity at the Caval Ridge Mine we are ultimately contributing to the long term viability and sustainability of the operation — continuing to deliver local jobs and investment for the regional supply chain and broader community.



Project key information

Project location



Horse Pit is located within the northern mining area of the Caval Ridge Mine, located approximately five kilometres south-west of Moranbah.

Investment

Ongoing equipment, site infrastructure and other sustaining capital investments of \$100 million (estimated) per annum on average over the life of the mine — shared 50:50 between BHP and Mitsubishi.

Project status



BMA is developing environmental approval applications to submit to State and Commonwealth Government authorities during 2021.



Expected project duration

If approvals are obtained, the pit is expected to start to progress into the target area from approximately 2025 with some existing site infrastructure potentially being relocated from 2023.

Jobs



This project is about sustaining the existing workforce, which is currently approximately 1,500.



New infrastructure

Various site roads, electrical lines, water pipelines, storage areas, other site structures and infrastructure items will be relocated within the site over time as the pit extends and intersects relevant locations.

Caval Ridge Mine Horse Pit Extension



BHP Mitsubishi Alliance

BMA operations



About BMA

BHP Mitsubishi Alliance (BMA) is a leading producer of low-cost, high quality, premium hard coking coal.

BMA owns seven Bowen Basin mines — Goonyella Riverside, Broadmeadow, Caval Ridge, Daunia, Peak Downs, Saraji and Blackwater. BMA also operates the Hay Point Coal Terminal near Mackay. The mines are located in the coal-rich Bowen Basin of Central Queensland, which covers an area of 75,000 square kilometres of Permian Age marine and freshwater sediments. With the exception of BMA's Broadmeadow underground longwall operation, the mines are open-cut, using dragline and truck/shovel fleets for overburden removal.



For more information on the Caval Ridge Mine Horse Pit Extension project as it becomes available over 2021 visit

bhp.com/sustainability/environment/regulatory-information

BHP/BMA Community hotline: 1800 078 797

About Caval Ridge Mine

BMA's Caval Ridge Mine is owned and operated by BHP Mitsubishi Alliance (BMA), a 50:50 joint venture between BHP and Mitsubishi Development Pty.

Caval Ridge was first constructed in 2012 and is located approximately five kilometres south-west of Moranbah. First coal occurred in 2014, with the operation having the capacity to produce up to 15 million tonnes per annum. The mine currently rails all coal through to BMA's Hay Point Coal Terminal in Mackay.