



Nickel West: Think big A view to the future

Eduard Haegel, Asset President Nickel West
Diggers and Dealers Mining Conference, 6 August 2018



Disclaimer

Forward-looking statements

This presentation contains forward-looking statements, including statements regarding: trends in commodity prices and currency exchange rates; demand for commodities; plans, strategies and objectives of management; closure or divestment of certain operations or facilities (including associated costs); anticipated production or construction commencement dates; capital costs and scheduling; operating costs and shortages of materials and skilled employees; anticipated productive lives of projects, mines and facilities; provisions and contingent liabilities; tax and regulatory developments.

Forward-looking statements can be identified by the use of terminology such as 'intend', 'aim', 'project', 'anticipate', 'estimate', 'plan', 'believe', 'expect', 'may', 'should', 'will', 'continue', 'annualised' or similar words. These statements discuss future expectations concerning the results of operations or financial condition, or provide other forward-looking statements.

These forward-looking statements are not guarantees or predictions of future performance, and involve known and unknown risks, uncertainties and other factors, many of which are beyond our control, and which may cause actual results to differ materially from those expressed in the statements contained in this presentation. Readers are cautioned not to put undue reliance on forward-looking statements.

For example, future revenues from our operations, projects or mines described in this presentation will be based, in part, upon the market price of the minerals, metals or petroleum produced, which may vary significantly from current levels. These variations, if materially adverse, may affect the timing or the feasibility of the development of a particular project, the expansion of certain facilities or mines, or the continuation of existing operations.

Other factors that may affect the actual construction or production commencement dates, costs or production output and anticipated lives of operations, mines or facilities include our ability to profitably produce and transport the minerals, petroleum and/or metals extracted to applicable markets; the impact of foreign currency exchange rates on the market prices of the minerals, petroleum or metals we produce; activities of government authorities in some of the countries where we are exploring or developing these projects, facilities or mines, including increases in taxes, changes in environmental and other regulations and political uncertainty; labour unrest; and other factors identified in the risk factors discussed in BHP's filings with the US Securities and Exchange Commission (the 'SEC') (including in Annual Reports on Form 20-F) which are available on the SEC's website at www.sec.gov.

Except as required by applicable regulations or by law, the Group does not undertake any obligation to publicly update or review any forward-looking statements, whether as a result of new information or future events.

Past performance cannot be relied on as a guide to future performance.

Non-IFRS and other financial information

BHP results are reported under International Financial Reporting Standards (IFRS). This presentation may also include certain non-IFRS (also referred to as alternate performance measures) and other measures including Underlying attributable profit, Underlying EBITDA (all references to EBITDA refer to Underlying EBITDA), Underlying EBIT, Adjusted effective tax rate, Controllable cash costs, Free cash flow, Gearing ratio, Net debt, Net operating assets, Operating assets free cash flow, Principal factors that affect Underlying EBITDA, Underlying basic earnings/(loss) per share, Underlying EBITDA margin and Underlying return on capital employed (ROCE) (all references to return on capital employed refer to Underlying return on capital employed), Underlying return on invested capital (ROIC). These measures are used internally by management to assess the performance of our business and segments, make decisions on the allocation of our resources and assess operational management. Non-IFRS and other measures have not been subject to audit or review and should not be considered as an indication of or alternative to an IFRS measure of profitability, financial performance or liquidity.

Presentation of data

Unless specified otherwise: variance analysis relates to the relative performance of BHP and/or its operations during the December 2017 half year compared with the December 2016 half year; operations includes operated assets and non-operated assets; data is presented on a continuing operations basis from the 2014 financial year onwards; references to Underlying EBITDA margin exclude third party trading activities; data from subsidiaries are shown on a 100 per cent basis and data from equity accounted investments and other operations is presented, with the exception of net operating assets, reflecting BHP's share; medium term refers to our five year plan. Numbers presented may not add up precisely to the totals provided due to rounding.

No offer of securities

Nothing in this presentation should be construed as either an offer or a solicitation of an offer to buy or sell BHP securities in any jurisdiction, or be treated or relied upon as a recommendation or advice by BHP.

Reliance on third party information

The views expressed in this presentation contain information that has been derived from publicly available sources that have not been independently verified. No representation or warranty is made as to the accuracy, completeness or reliability of the information. This presentation should not be relied upon as a recommendation or forecast by BHP.

BHP and its subsidiaries

In this presentation, the terms 'BHP', 'Group', 'BHP Group', 'we', 'us', 'our' and 'ourselves' are used to refer to BHP Billiton Limited, BHP Billiton Plc and, except where the context otherwise requires, their respective subsidiaries as defined in note 28 'Subsidiaries' in section 5.1 of BHP's Annual Report on Form 20-F and in note 13 'Related undertaking of the Group' in section 5.2 of BHP's Annual Report on Form 20-F.

Mineral Resources and Competent Person Statement

Competent Person Statement

The information in this presentation that relates to Nickel West Mineral Resources as at 30 June 2017 (below) is based on information compiled by Marcel Menicheli a Competent Person who is a Member of The Australian Institute of Mining and Metallurgy (MAusIMM). Mr. Menicheli is a full-time employee of BHP and has sufficient experience that is relevant to the style of mineralisation and type of deposit under consideration and to the activity which he is undertaking to qualify as a Competent Person as defined in the 2012 Edition of the 'Australasian Code for Reporting of Exploration Results, Mineral Resources and Ore Reserves'. Mr Menicheli consents to the inclusion in the presentation of the matters based on his information in the form and context in which it appears. The Mineral Resource tonnage and nickel grades are extracted from the BHP Annual Report 2017 available at www.bhp.com. All tonnes and grade information has been rounded hence small differences may be present in the totals. Total in-situ nickel metal final value is presented in kilotonnes below (*) and million tonnes of metal rounded to two significant figures on slide 5. No mining or metallurgical modifying factors were applied to the results.

The information in this presentation that relates to Venus Mineral Resources as at 1 August 2018 (Slide 10) is based on information compiled by Marcel Menicheli (MAusIMM). Mr Menicheli consents to the inclusion in the presentation of the matters based on his information in the form and context in which it appears. Massive and disseminated domains were interpreted from 43 diamond drill holes drilled from underground developments in addition to the 2014 surface drilling campaign, modelled in Leapfrog 3D Geo, and estimated in Datamine Studio RM software. Venus Model was estimated using the inverse distance squared method (IDS) for the massive domains and Ordinary Kriging (OK) for the disseminated domain. A 0.40% Ni cut-off was applied and the Mineral Resource is restricted to fresh rock. Drilling space: Inferred from 50mx50m to <100mx100m; Indicated ~50mx50m.

As at 30 June 2017

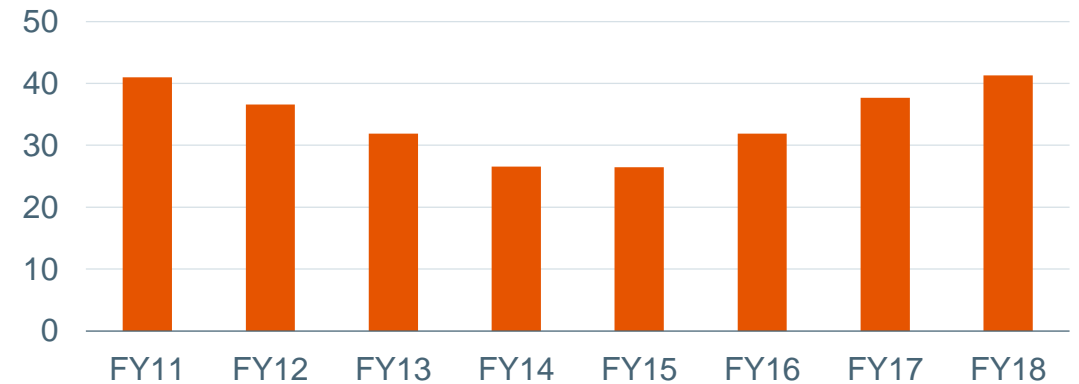
Commodity Deposit	Ore Type	Measured Resources		Indicated Resources		Inferred Resources		Total Resources			BHP Interest %
		Mt	%Ni	Mt	%Ni	Mt	%Ni	Mt	%Ni	Kt Ni metal (*)	
Nickel West Operations											
Leinster	OC	2.5	1.4	1.7	0.77	2.9	2.0	7.1	1.5	105	100
	Disseminated Sulphide	-	-	71	0.52	96	0.50	167	0.52	879	
	UG	15	2.1	7.9	2.0	5.4	2.5	28	2.1	599	
	SP	0.16	1.2	1.4	1.0	-	-	1.6	1.0	16	
	SP Oxidised	-	-	-	-	1.9	1.7	1.9	1.7	32	
Mt Keith	Disseminated Sulphide	131	0.57	102	0.50	27	0.51	260	0.53	1,384	100
	SP	10	0.48	-	-	-	-	10	0.48	48	
Cliffs	Disseminated Sulphide	-	-	4.0	1.0	0.78	1.0	4.8	1.0	46	100
	Massive Sulphide	0.89	4.0	1.2	4.0	0.47	4.1	2.6	4.0	104	
Nickel West Projects											
Yakabindie	Disseminated Sulphide	156	0.59	113	0.62	171	0.61	440	0.61	2,670	100
Venus	Disseminated Sulphide	-	-	0.47	2.4	5.4	1.7	5.9	1.8	103	100
	Massive Sulphide	-	-	-	-	1.5	5.8	1.5	5.8	90	
Jericho	Disseminated Sulphide	-	-	-	-	28	0.58	28	0.58	82	50

Mt Keith concentrator exceeds 40kt of nickel in concentrate for the first time since FY11...

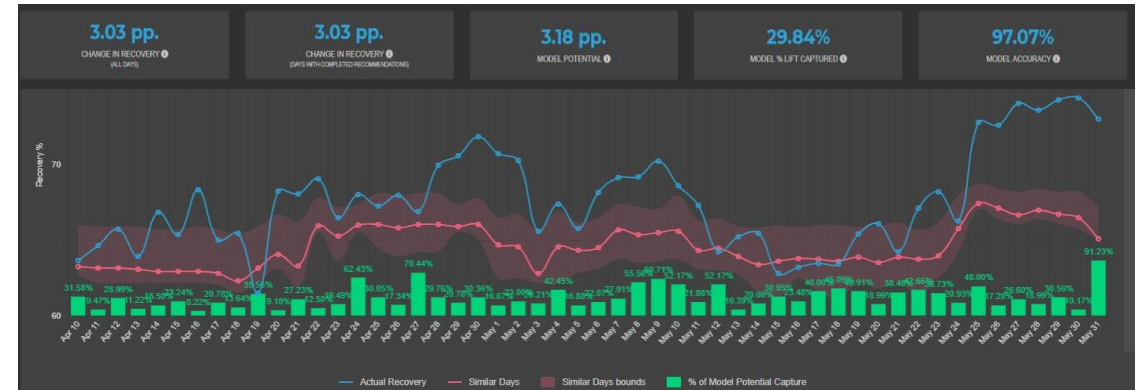
World-class concentrator performance

- Best in class for BHP >8300 operating hours per year.
- Advanced Analytics and other projects have delivered a two to three per cent recovery uplift.
- Further recovery improvements should be realised this year with the installation of Stack Cell.
- Ongoing investment in asset integrity: structural, electrical, mechanical, control systems has improved reliability and process stability.
- Trials are showing that adding just five per cent Fe rich nickel sulphides to the blend increases Fe:MgO from 1 to 4 with no reduction in the +20 per cent nickel concentrate grade.

Metal in Concentrate (kt Ni)



Actual Recovery vs. Predicted Recovery, April - May 2018

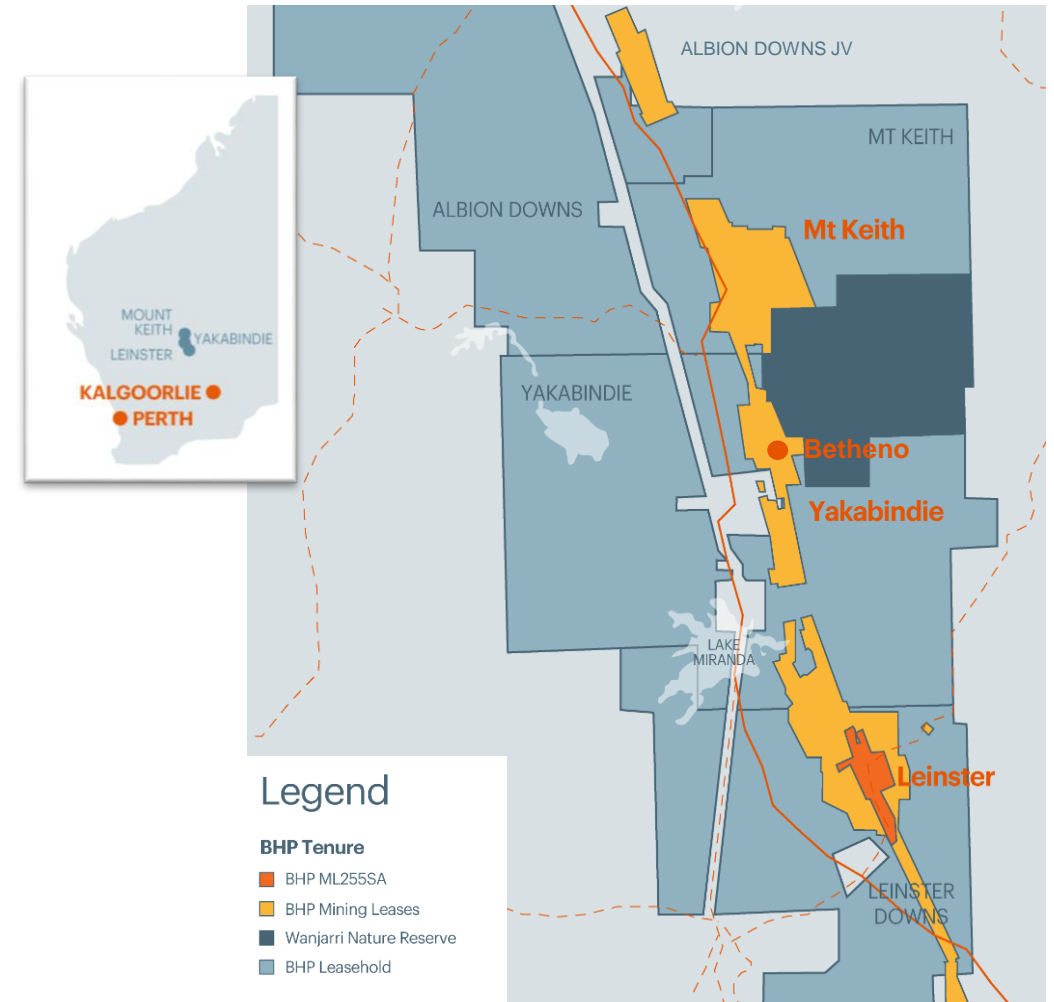


...with our plans to 2040 underpinned by 6.2 mt¹ contained nickel metal in Resource

Mt Keith Satellite Project (Yakabindie) will be the first of a series of new developments

- Mining is planned to commence in H1 CY19, pending approvals, and will be integrated with the existing BHP operations at Mt Keith.
- Haulage contract gone to tender, supplying ore to the Mt Keith concentrator.
- Project requires no new infrastructure, making it a low-cost development opportunity.
- Drilling will commence this month to better understand the Mt Keith resource at depth.
- **Betheno**, just north of Yakabindie, could be our next opportunity, with potential for iron-rich nickel sulphides, compared to other Mt Keith deposits.

¹ Refer to Nickel West Mineral Resources as at 30 June 2017 on Slide 3, for breakdown of categories, tonnes and grades

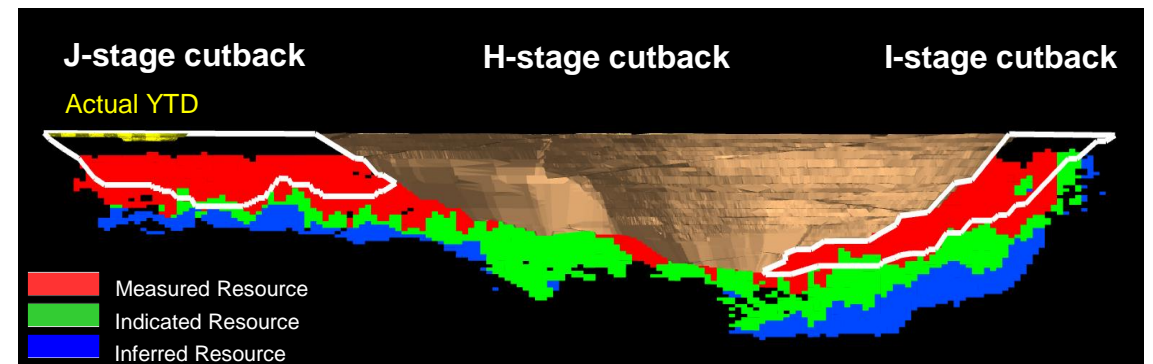
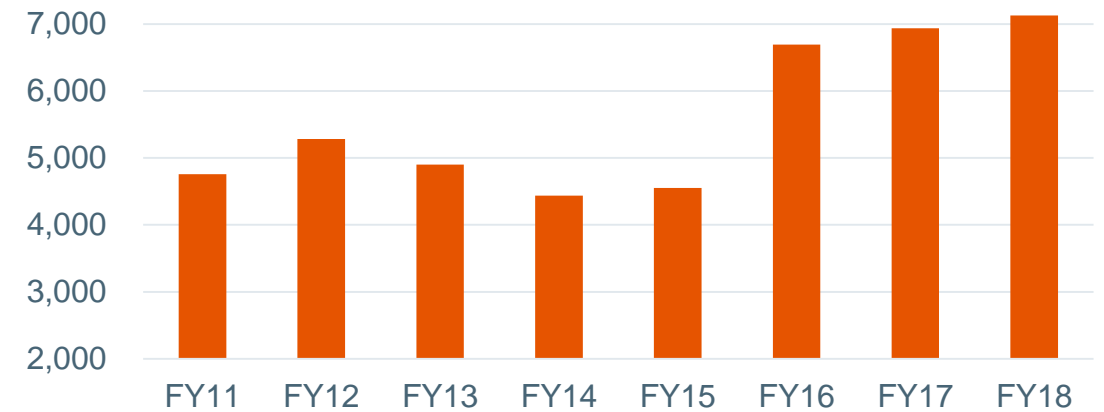


World-class mining fleet performance at Mt Keith has reduced costs and created new opportunities...

Two additional cut-backs enter the plan

- Mining productivity has improved dramatically over the past few years pursuing the simple idea that 'trucks never stop and trucks never leave the circuit'.
- It is now best in class for BHP with over 7000 (annualised) truck hours.
- This has substantially reduced mining costs and improved the economics for Stage I and Stage J.
- Stage J is already in execution after last years drill program.
- Stage I is in the 2040 plan.

793D Annualised Hours



...including the commencement of a concept study to expand the Mt Keith concentrator to 50ktpa

Low cost de-bottlenecking will unlock capacity

- Mt Keith concentrator is constrained by grinding capacity.
- A third SAG mill would remove this constraint.
- Additional grinding capacity also supports a lower grind size which test work has shown will further increase recovery.
- The bottleneck will move to flotation after achieving circa 45ktpa.
- The gradual replacement of flotation cells with larger capacity modern technology would realise the full 50ktpa over several years.

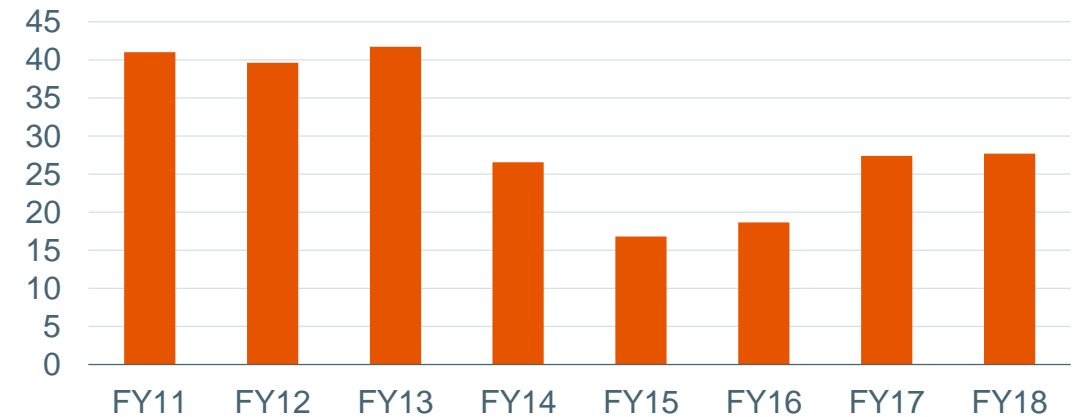


Leinster concentrator is rebuilding production...

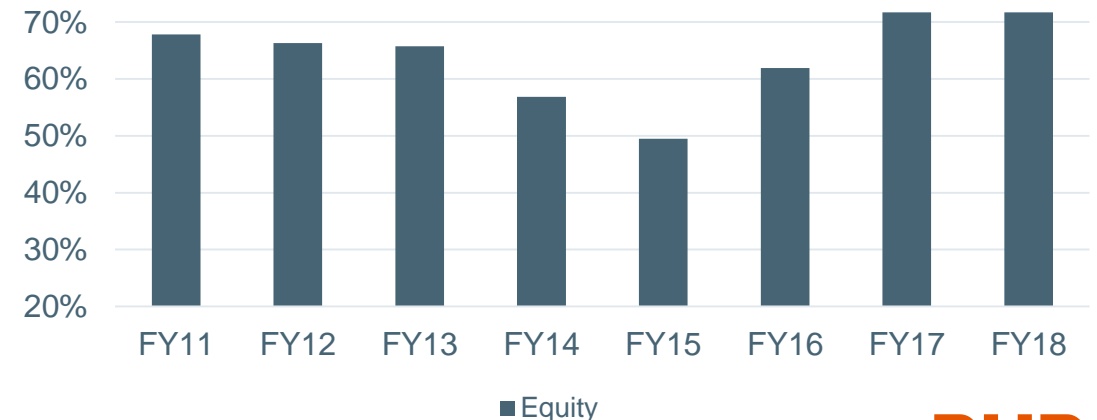
The closure of Perseverance underground mine in 2013 had a dramatic impact on production

- FY17 and FY18 improvements enabled by the restart of Leinster underground, Rocky's Reward 2 and Cliffs Underground.
- Significant investment upgrading the asset with particular focus on structural, electrical and mechanical.
- Significant recovery improvements delivered through a program of minor projects.
- Our aspiration to return to 40ktpa will take a number of years as new mine developments come on stream.

Metal in Concentrate (kt Ni)

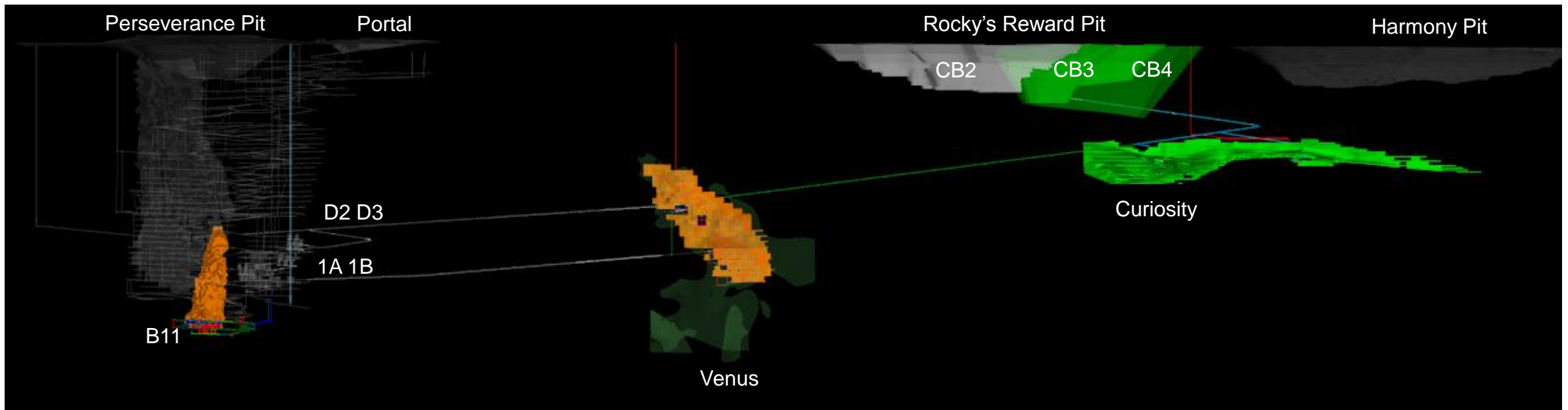


Equity feed from Leinster and Mt Keith vs. Third Party Supply to Kalgoorlie Smelter



...by developing our known resource base at Leinster

Best corridor for exploration, utilising existing underground access



Venus is now approved for execution ...

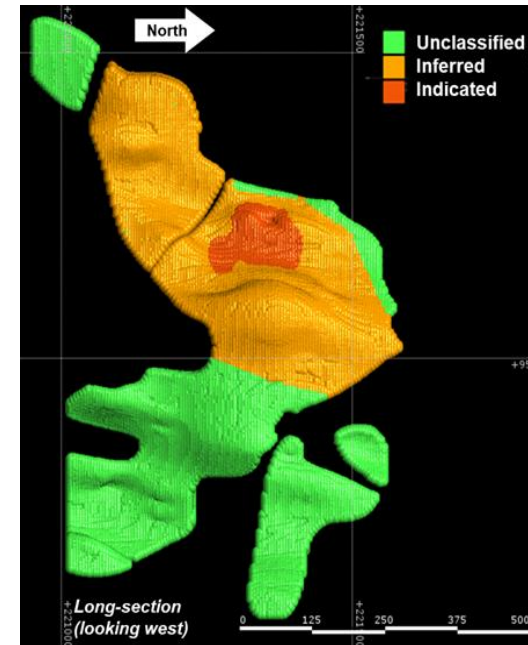
Venus has been approved

- Definition drilling has focused on the upper area. Results reaffirm the very attractive economics of Venus.
- Venus drilling from the lower level is ongoing.
- First stoping production is expected towards the end of FY19.
- Complete refurbishment of shaft, winder and winder control system will be complete mid next year.
- Ventilation shaft to 700m is under construction and will be completed at a similar timing. New paste fill plant being scoped.

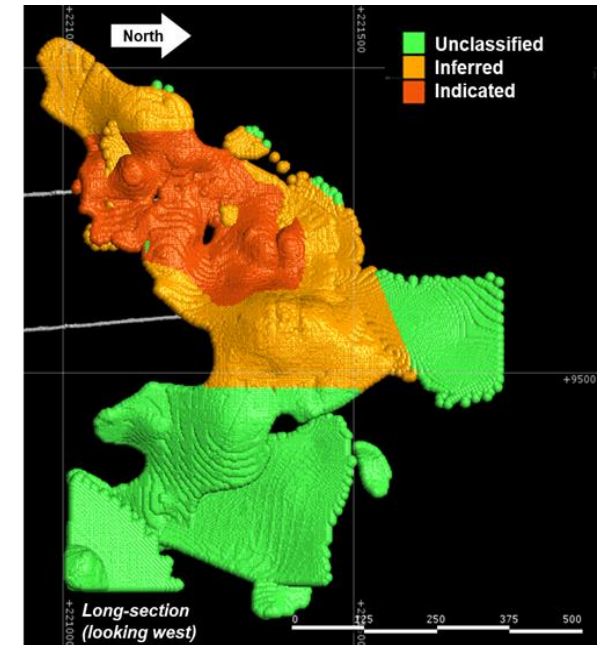
Indicated Resources have increased and Reserves can follow

Ore Type	As at 30 June 2017*				As at 1 August 2018 **			
	Indicated Resources		Inferred Resources		Indicated Resources		Inferred Resources	
	Million Tonnes	Ni%	Million Tonnes	Ni%	Million Tonnes	Ni%	Million Tonnes	Ni%
Massive sulphide	-	-	1.5	5.8	0.73	6.1	0.87	5.5
Disseminated sulphide	0.47	2.4	5.4	1.7	2.4	1.8	3.5	2.0
Total	0.47	2.4	6.9	2.6	3.2	2.8	4.4	2.7

2017



2018



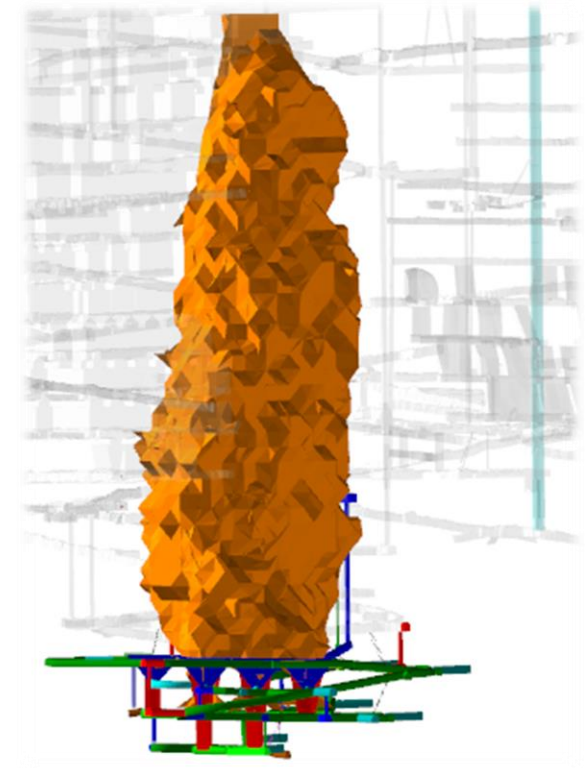
* and ** Refer to Competent Person Statements for Nickel West / Venus Mineral Resources on Slide 3

...Leinster B11 development underway with approved initial funding. Final approval may be later this year.

Block caving would deliver safe, low cost production

- Low capital, low operating cost development.
- Small, high-grade cave.
- Safest design, ideally suited to the ore body and stress regime.
- Development has commenced.
- All major infrastructure in place; will use existing shaft for hoisting ore.
- Builds on existing knowledge base having used sub-level caving prior.
- Highly capable team being built up to execute and operate the B11 Block Cave.

Leinster B11 'baby' Block Cave design



...and following the success of Cutback 2, Cutback 3 has commenced at Rocky's Reward

Rocky's Reward Cutback 3 (CB3) has commenced

- Rocky's Reward Cutback 2 was completed in July.
- Nickel produced significantly exceeded expectations.
- Rocky's Reward Cutback 3 will deliver a further 26kt of contained nickel metal in ore.
- Rocky's Reward Cutback 4 is now under study.
- This should maintain the feed of ore into our Leinster concentrator over the next three years, supplementing the ore from Cliffs and Leinster underground mines.

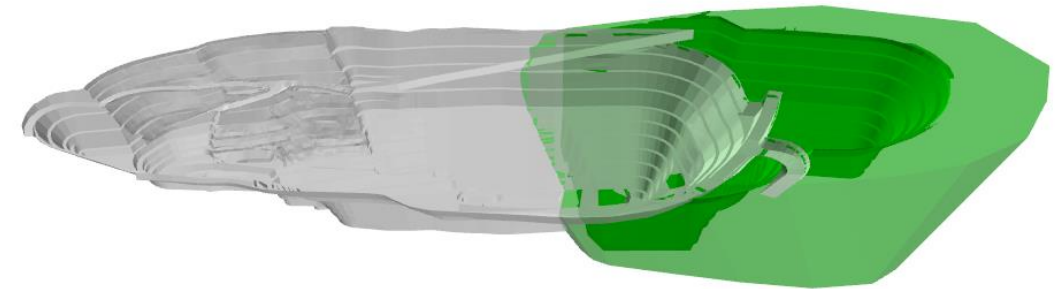
Camelot Satellite Pit development

- Located 15km north of Perseverance.
- Camelot being developed at the same time as Rocky's Reward Cutback 3.

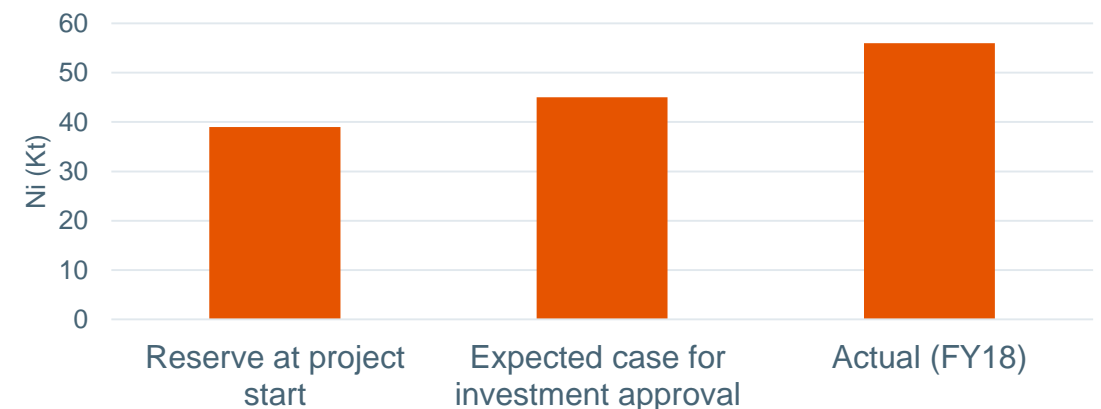
Stage 1 and 2

Stage 3

Stage 4

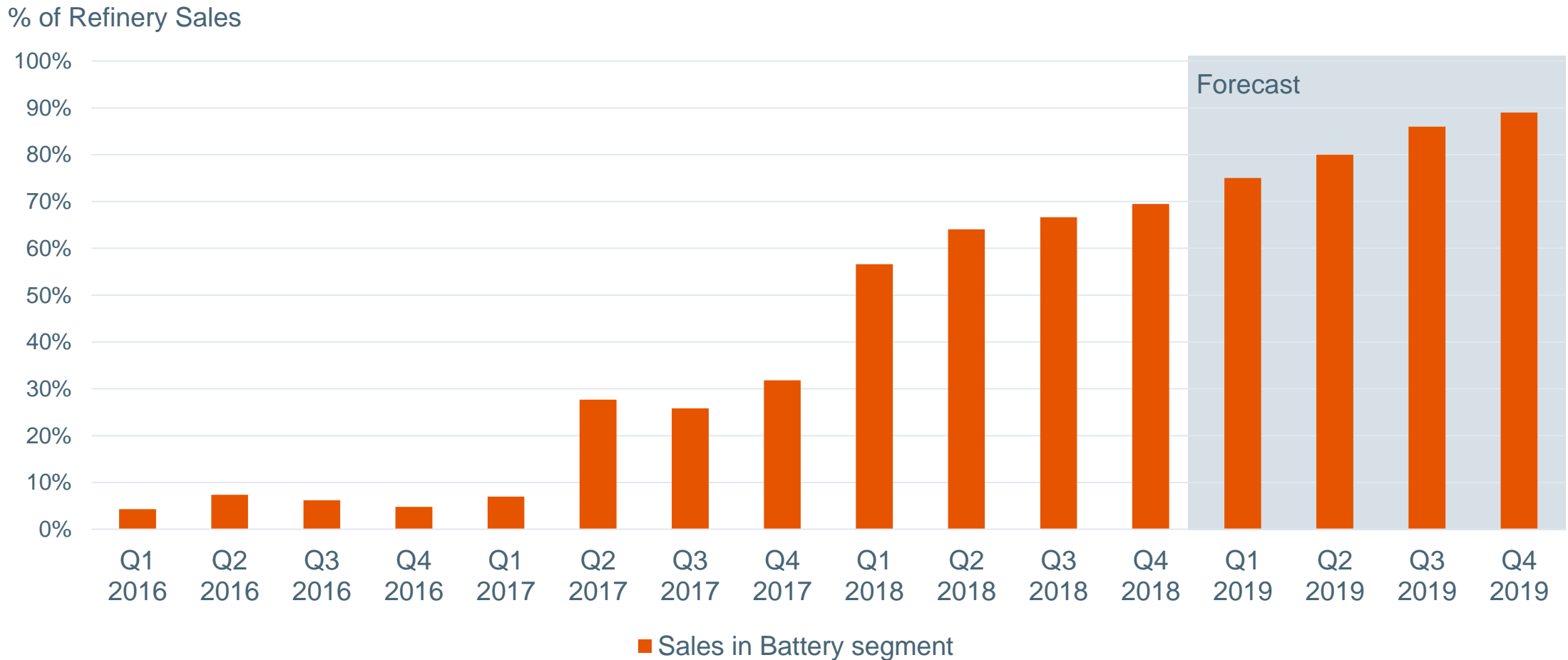


Rocky's Reward Cutback 2 ROM Metal tonnes



These investments in our mines support our transition to becoming a globally significant battery materials supplier

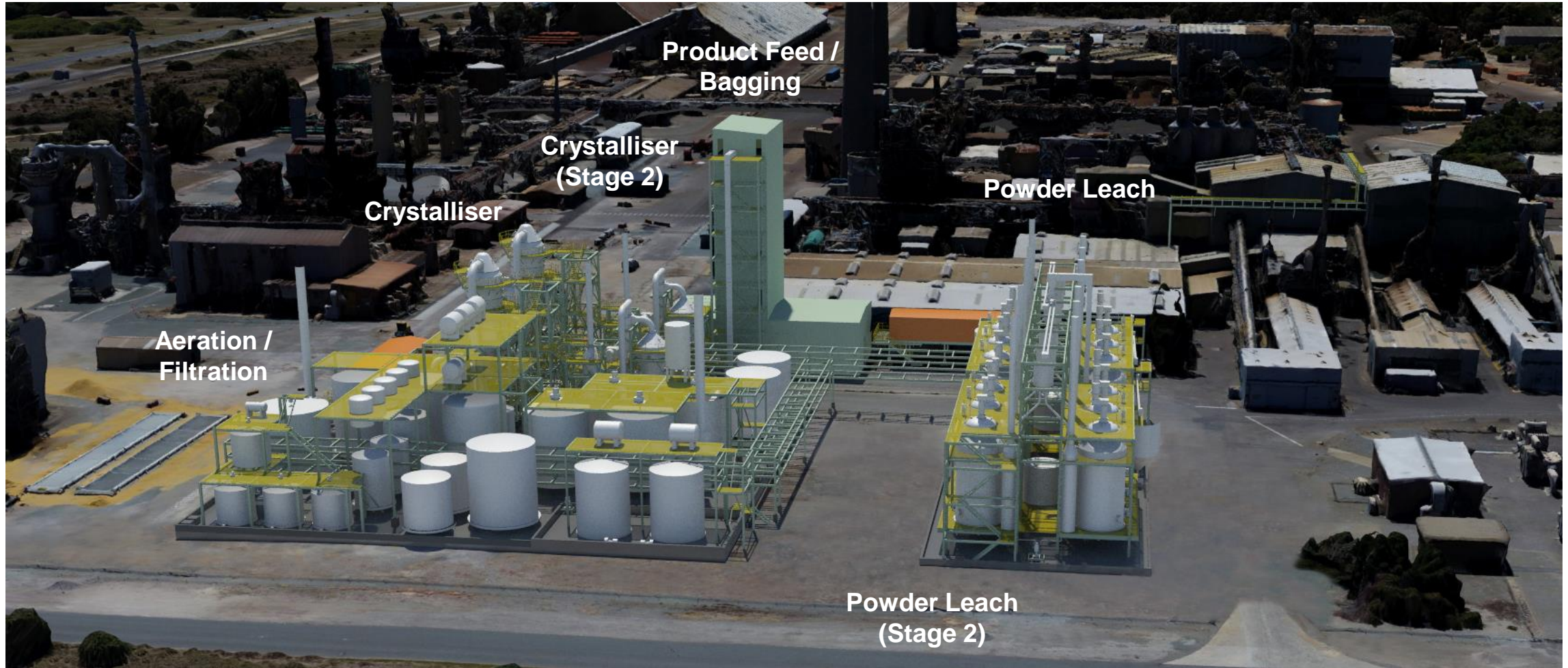
Expected increasing sales and demand for the battery segment



With all regulatory approvals now received, Nickel Sulphate Stage 1 (100kt) will start to accelerate...



...and preparations for Stage 2 approvals have commenced



...while the mini plant at CSIRO produces 100 kg/day of on-spec nickel sulphate – ready for our customers

High-quality nickel sulphate at our mini-plant in Perth

- We have tested the process design to prove that we will produce a quality, on-spec product for our customers in the battery market.
- All of the inputs to the process are sourced from our Kwinana Nickel Refinery.
- Production run is complete with samples shortly distributed to future customers.

We are increasing cobalt

- Instead of removing cobalt, we have included cobalt as a cobalt sulphate.
- This final mixed sulphate product is therefore amenable to an increase in the levels of cobalt, should our cobalt SX testwork be successful.
- Our customers are supportive of the change.

Nickel Sulphate final specification

Element	Typical	Pilot Plant	Unit
Ni	22.3	22.3	% min
Co	10	80-120	ppm max
Cu	1	<1	ppm max
Fe	1	<1	ppm max
Zn	1	<1	ppm max
Mn	1	<1	ppm max
Mg	1	<1	ppm max
Pb	1	<1	ppm max
Cr	1	<1	ppm max
Cd	1	<1	ppm max
Ca	5	2	ppm max
Al	1	1	ppm max
Na	5	5	ppm max
Cl	10	5	ppm max
Si	5	2	ppm max
K	5	1	ppm max

Our people and culture are a material strength of the business

Our vision was created by our employees:

Nickel West seeks to energise the future through innovation and excellence.

- Consistent plan delivery, innovative low-cost solutions, and productivity excellence underpin our long-term plans.
- We will be leveraging our significant resource base, downstream infrastructure and technical skills, to deliver this vision.
- Our people underpin our business plans and vertically integrated business.



**'Think Big' Process Trainees
Kalgoorlie Nickel Smelter**

BHP