

An underwater photograph showing a large, dark, cylindrical pipe or structure on the seabed. Several fish of various species are swimming around the pipe. The water is a deep blue color.

# BHP

# Griffin Decommissioning

## Frequently Asked Questions for Consultation and Comparative Assessment

**The Griffin oil and gas field - located off Western Australia's coast, 70 kms from Onslow and 68 kms from Exmouth – is now in the final stage of closure.**

Since production finished in 2009, BHP has conducted preliminary closure activities to ensure the field is safe and conducted technical studies. So far, all subsea infrastructure has been shut down and flushed of hydrocarbons. The Griffin wells were permanently plugged in 2017, creating an impermeable barrier between the reservoir formation so that the wells can no longer produce hydrocarbons. Six mid depth buoys were removed from the field in 2018 and integrated into King Reef (artificial reef structure) in Exmouth Gulf following preparation works to ensure the structures were safe and conducive to marine growth.

BHP is now planning for the safe and sustainable closure of Griffin facilities, including pipelines, flowlines and subsea equipment.

Through an inclusive, transparent consultation process called a Comparative Assessment, BHP will work with relevant stakeholders to identify the preferred approach for decommissioning of the Griffin facilities.

BHP will use outcomes from Comparative Assessment and other consultation in its decommissioning submission to regulators, which will be subject to approval before decommissioning can commence.

## Frequently Asked Questions

### What is decommissioning?

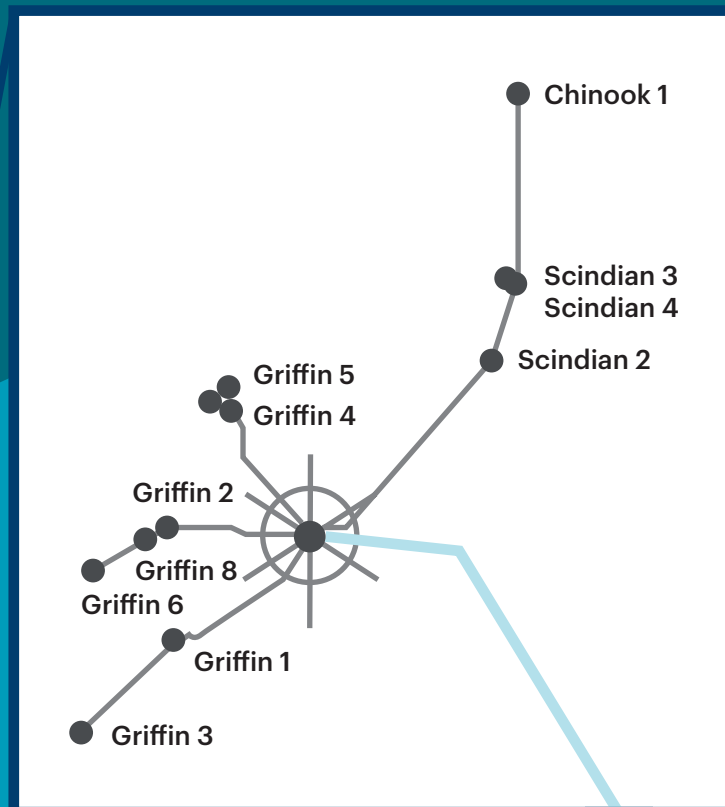
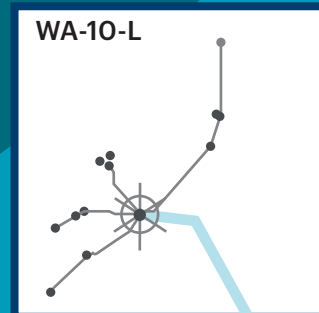
Decommissioning refers to the safe and sustainable closure of a production facility and may involve:

- The full removal of equipment
- Partial removal, with some infrastructure left in place and other infrastructure removed
- The treatment of equipment in such a way that it can sustainably remain on the seabed
- The enhancement of equipment that is left in place to provide ecological benefit.

A Comparative Assessment process will be used to determine the preferred decommissioning option for each piece of equipment in the Griffin field.

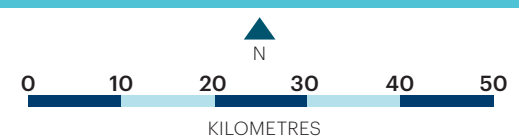
## Griffin Facility and Pipeline

### Griffin Field



### LEGEND

- Griffin Wells (not operational)
- Griffin Export Pipeline (WA-3-PL) / (TPL-10)
- Macedon Pipeline (TPL-25)
- - - State Commonwealth Waters Boundary



Onslow

Exmouth

**1989**

The field was discovered in 1989 with production commencing in 1994.

**167 Million**

The number of barrels of oil produced.

**62 Trillion**

The amount of gas in cubic feet produced for the WA domestic gas market.

**2009**

The field closed production in 2009.

## What is a Comparative Assessment?

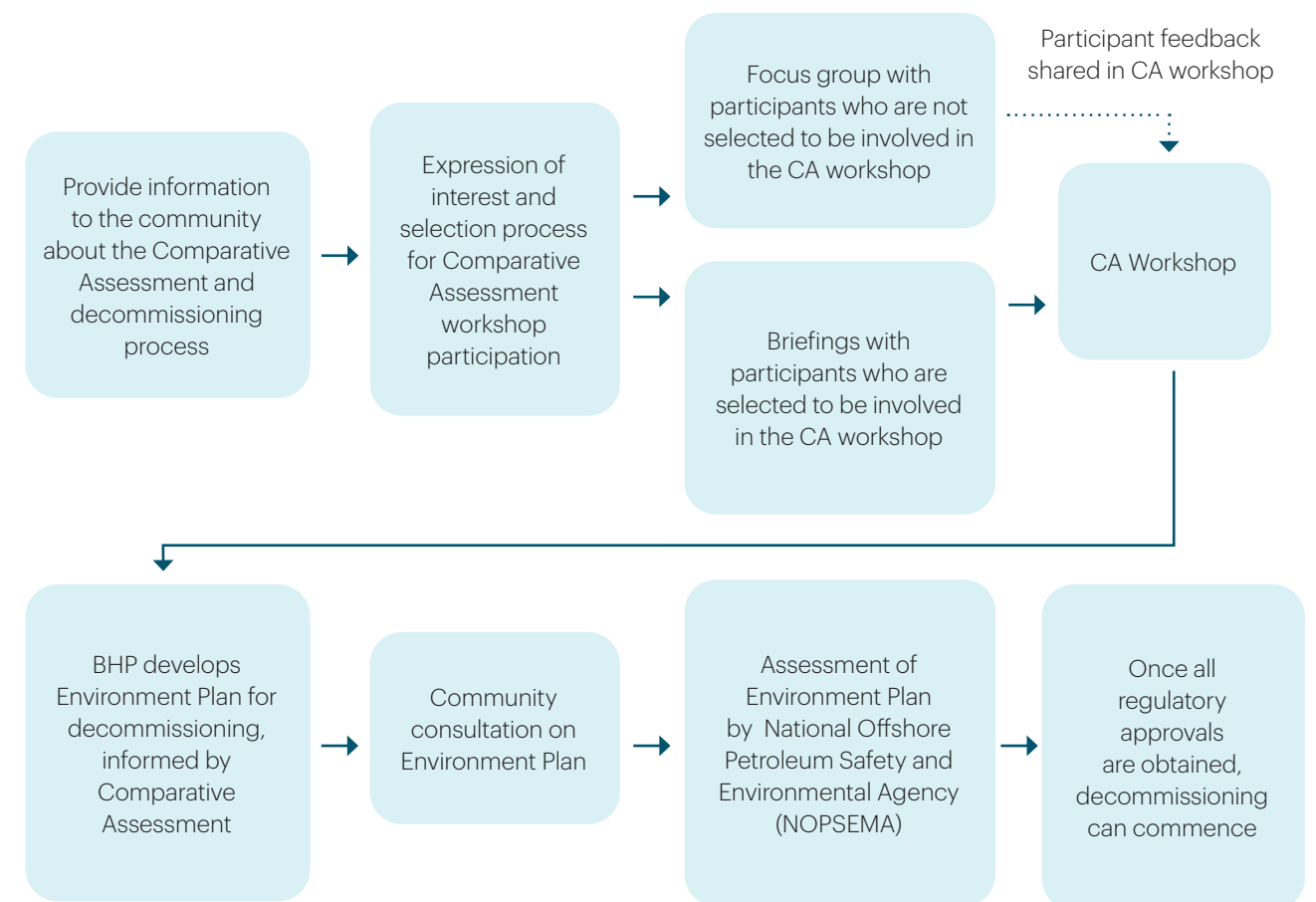
A Comparative Assessment is a collaborative approach to making an informed decision.

BHP is committed to considering stakeholder perspectives to identify a preferred decommissioning option which provides the best balanced socioeconomic, environmental, health and safety, technical and economic outcome.

During the Comparative Assessment, stakeholders will participate in an analysis of risks and benefits that will inform the selection of the preferred option for how subsea equipment could be decommissioned.

## How does the Comparative Assessment fit in the decommissioning process?

The diagram below shows how the consultation and Comparative Assessment fit in the decommissioning process.



## Who can participate in the consultation and Comparative Assessment?

Relevant stakeholders with an interest in Griffin decommissioning are encouraged to express their interest, in particular community members or representatives of organisations in Onslow or Exmouth.

## How do I register my interest in participating?

To express your interest in participating please send the following details to [Griffin@creatingcommunities.com.au](mailto:Griffin@creatingcommunities.com.au):

- ☐ Full name
- ☐ Email address
- ☐ Phone number
- ☐ Organisation that you represent (if you do not represent an organisation, please write "community member")
- ☐ Position (if you do not represent an organisation, please write "community member")
- ☐ Town in which you live and/or in which your organisation operates (Onslow and/or Exmouth)
- ☐ The interest group that you / your organisation belongs to (select the most relevant option): state government, local government, Traditional Owners, local industry, oil and gas industry, non-government organisation, local business; local community member.
- ☐ Indicate if you want to participate in the Comparative Assessment workshop. If you indicate that you do not want to participate in the Comparative Assessment workshop but you have completed this form, you will be invited to attend a separate focus group.

## How are participants selected following the expression of interest?

An independent auditor will select participants aiming to ensure a balance of stakeholder representation. Participants will include representatives from: state government, local government, Traditional Owners, local industry, oil and gas industry, non-government organisations, local businesses and local community members.

## Where and when is the Comparative Assessment workshop taking place?

The Comparative Assessment workshop itself will be a full-day workshop in June in Onslow. Exmouth participants or others who are not able to attend in person will also be given a link to attend via a digital platform (e.g. MS Teams, Zoom or similar).

Participants who send an expression of interest and are selected to participate will be provided with the specific time, date, venue and web link closer to the date.

Please note that BHP is unable to pay participants for either their time or costs associated with attending briefings, focus groups or the Comparative Assessment Workshop.

## Who is conducting the consultation and Comparative Assessment?

The consultation process leading up to the Comparative Assessment workshop is being independently run by community engagement consultants from Creating Communities. This includes any briefings and focus groups that are conducted in advance of the Comparative Assessment. The role of Creating Communities is to ensure that:

- A range of stakeholder organisations are given the opportunity to participate in the Comparative Assessment workshop.
- All Comparative Assessment participants are informed without bias on the decommissioning scenarios that will be discussed in the Comparative Assessment workshop.
- The views of participants who cannot participate in the Comparative Assessment are fed into that workshop to help inform the analysis.

The Comparative Assessment workshop is being independently run by Catalyze, experts in conducting collaborative decision-making processes that are informed by the best available information.

## Further information

To express your interest or for further information, please contact [Griffin@creatingcommunities.com.au](mailto:Griffin@creatingcommunities.com.au) or call Joe from Creating Communities on **08 9284 0190**.