



BHP

Community Grants Program

Application Guidelines

BACKGROUND

BHP's purpose is to bring people and resources together to build a better world.

We believe we are successful when we work in partnership with communities to achieve long-term social, environmental and economic outcomes. We seek to create and contribute a lasting benefit to the societies where we operate or have an interest through the positive social and economic benefits generated by our core business, our constructive engagement and advocacy on important issues and our voluntary social investment.

We aim to help our communities of interest become sustainable well into the future and provide a better place for our employees to live and work.

These communities include:

- Roxby Downs
- Andamooka
- Woomera
- Upper Spencer Gulf
- Far North



PRIORITY FOCUS AREAS

Our Social Investment Framework focuses on six key areas which align with the emerging issues, risks and trends of relevance to our business and where we believe we can make a positive contribution to supporting outcomes within the community:

Planet • People • Prosperity

 Decarbonisation	 Healthy Environment	 Indigenous partnerships	 Safe, inclusive and future ready workforce	 Thriving, empowered communities	 Responsible supply chains
Contributing to the world's climate ambitions	Delivering nature-positive outcomes	Building relationships based on trust, respect and mutual benefit	Enhancing safety diversity, capability and wellbeing	Contributing to long-term prosperity and resilience	Supporting ethical, sustainable and transparent supply chains

- **Decarbonisation:** Contributing to the world's climate ambitions
- **Healthy environment:** Delivering nature-positive outcomes
- **Indigenous partnerships:** Building relationships based on trust, respect and mutual benefit
- **Safe, inclusive and future ready workforce:** Enhancing safety, diversity, capability and wellbeing
- **Thriving, empowered, communities:** Contributing to long-term prosperity and resilience
- **Responsible supply chains:** Supporting ethical, sustainable and transparent supply chains

SELECTION CRITERIA



All requests are assessed against the following criteria. Your request must meet these criteria in order to be considered:

- Demonstrates deliverable outcomes in the community, within identified priority focus area/s Build capacity within the community (leadership or community capacity-building skills development programs)
- Addresses an identified community need that is not being met by any other organisation
- Demonstrates appropriate governance and the capacity to effectively manage the project
- Addresses all questions and provides all supporting documentation, including a detailed budget and promotion plan,
- Identifies project risks and ways to appropriately manage them

Preference will be given to projects that:

- Are from organisations operating in the Roxby Downs, Andamooka and Woomera region, Upper Spencer Gulf or Far North communities
- Align with at least one of the BHP social investment key focus areas
- Are from reputable, non-profit organisations with appropriate and effective governance and the capacity, financial stability and leadership to support the project
- Involve participation from the wider community and enable community ownership
- May allow for participation of BHP employees.

Sporting Association

Applications from sporting associations to support attendance by representative teams (made up of participants selected on merit) at competitive events will be considered, however a maximum of one event per year would be supported, and up to a maximum of \$100 per participant.

ELIGIBILITY

We can accept applications:

- From incorporated, not for profit organisations / institutions that are based in and / or deliver services in our host communities
- Applicants should have a proven track record of managing community projects or, be able to demonstrate that they will be able to manage the project for which support is being sought.
- BHP, in its sole discretion, may accept applications from organisations with officers, directors, beneficial owners or employees who are known to be government officials in a position to take official action in favour of BHP or close relatives of such government officials
- BHP, in its sole discretion, may accept organisations that are in themselves grant making or funding bodies
- We will conduct appropriate due diligence on all recipient organisations and their respective project.

We cannot accept applications:

- From individuals
- For solely commercial or advertising purposes
- From political organisations or campaigns, projects or functions which are the responsibility of government
- From organisations that do not have an Australian Business Number (ABN)
- More than one application from an organisation per financial year
- Projects for religious or political purposes
- Media: set up or distribution of any type of media
- Conference participants
- Individual training needs or membership fees
- Wages of any individual in relation to administration or management of the project
- Requests for surplus goods
- Programs which should be funded elsewhere such as through government services
- Fundraising events
- General funding without identifying specific outcomes
- Start-up funds for businesses or sporting organisations
- Groups that BHP believes (in its sole discretion) unreasonably limit membership based on race, gender, beliefs, class or cultural consideration
- Activities which BHP, in its sole discretion, considers hazardous or dangerous (including from a health, safety, environmental, community or other perspective)
- Not directly supporting our host communities (see list of communities on page one)
- From sporting groups which do not service our host communities
- Travel requests, for travel away that does not directly benefit our host communities
- From organisations with which we have an existing partnership in place, for projects deemed to be within the scope of the existing partnership
- Events, initiatives or projects which do not align with BHP's alcohol management approach
- For activities that conflict with our corporate values (see charter on page 10 for details)
- From organisations who have not yet evaluated and acquitted grants they have previously received from BHP

COMMUNITY GRANTS PROGRAM



Funding is available in two rounds per year, and community organisations are invited to apply for funding for eligible projects. Community Donations can be funded up to \$20,000.

Decisions on which projects to support are made by the Olympic Dam Corporate Affairs team on the merits of the information supplied, alignment to BHP's key focus areas and criteria, equitable allocation, and funds available per financial year. Successful applicants are notified within eight weeks of the round closure date.

Submissions must be made before the quarterly funding round closing date. Please allow 2 months for your application to be assessed before the commencement of your project.

The funding round closing dates are:

- First Friday in March
- First Friday in September

Unfortunately, applications for programs or events which commence or take place prior to the notification date for the applicable round won't be accepted. Applicants are advised to apply one funding round ahead of the proposed project.

Submitting Your Request

Content of Application Form

The application form contains questions asking you to provide us with the relevant information that we require to be able to appropriately assess your application.

Please note that some of the detailed information we require from you is necessary in order for us to be able to comply with BHP standard legal requirements.

This includes ascertaining whether any individuals associated with your organisation are affiliated with Government Officials and other decision makers prior to your application.

We ask these questions so that we can satisfy laws which ensure anti-corruption compliance. For example, to ensure a particular grant is not seeking to inappropriately influence a Government Official or other decision maker.

COMMUNITY GRANTS PROGRAM

What Happens Next?

Once received, your request will be checked by your local Community Relations Team who may seek additional information from you.

The application will then go through an approvals process and this may take at minimum two months to complete.

Applicants will be notified of the outcome of their application by email.

Please note that we offer no assurances that your request will be supported and we are unable to provide feedback on applications by unsuccessful applicants.

Please refer to the diagram below for a summary of the grant application process.

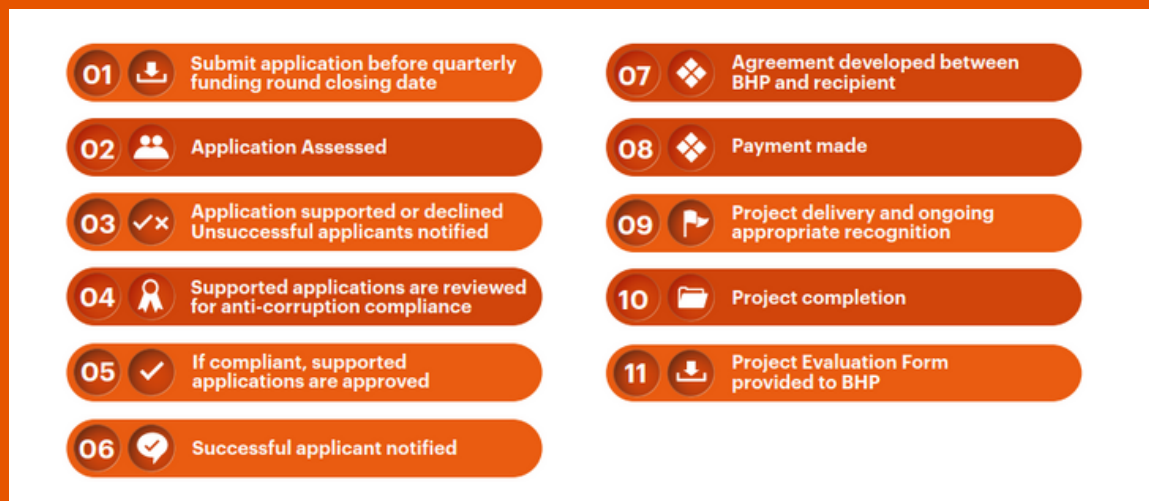
Project Evaluation

All successful funding recipients will be expected to complete and return a Project Acquittal Form, with evidence of the agreed use of the grant funds. The Form will be provided when applicants are notified of their successful application.

This evaluation must be received within four weeks of completing the project or in a timeframe mutually agreed between BHP and the recipient. Please include evidence of how the community grant was promoted and acknowledged (i.e. photos or social media).

Organisations will not be eligible to receive further funding from BHP until any previous funding has been acquitted (e.g. spent) and an evaluation form completed.

If deemed appropriate, BHP also reserves the right to monitor and audit funded projects if required.



DEFINITIONS

Definition of Government Official

For the purposes of this application, “Government Official” includes:

- officers or employees of government, government departments or government agencies;
- officers or employees of government-owned or controlled entities including state owned companies;
- officers or employees of a public international organisation;
- political parties, political party officials, or candidates for public office;
- individuals who hold or perform the duties of an appointment, office or position created by custom or convention;
- people who hold themselves out to be the authorised intermediary of a government official.

Examples of Government Official include: council officer; school teacher; police officer, etc.

Definition of Person Who Represents Others

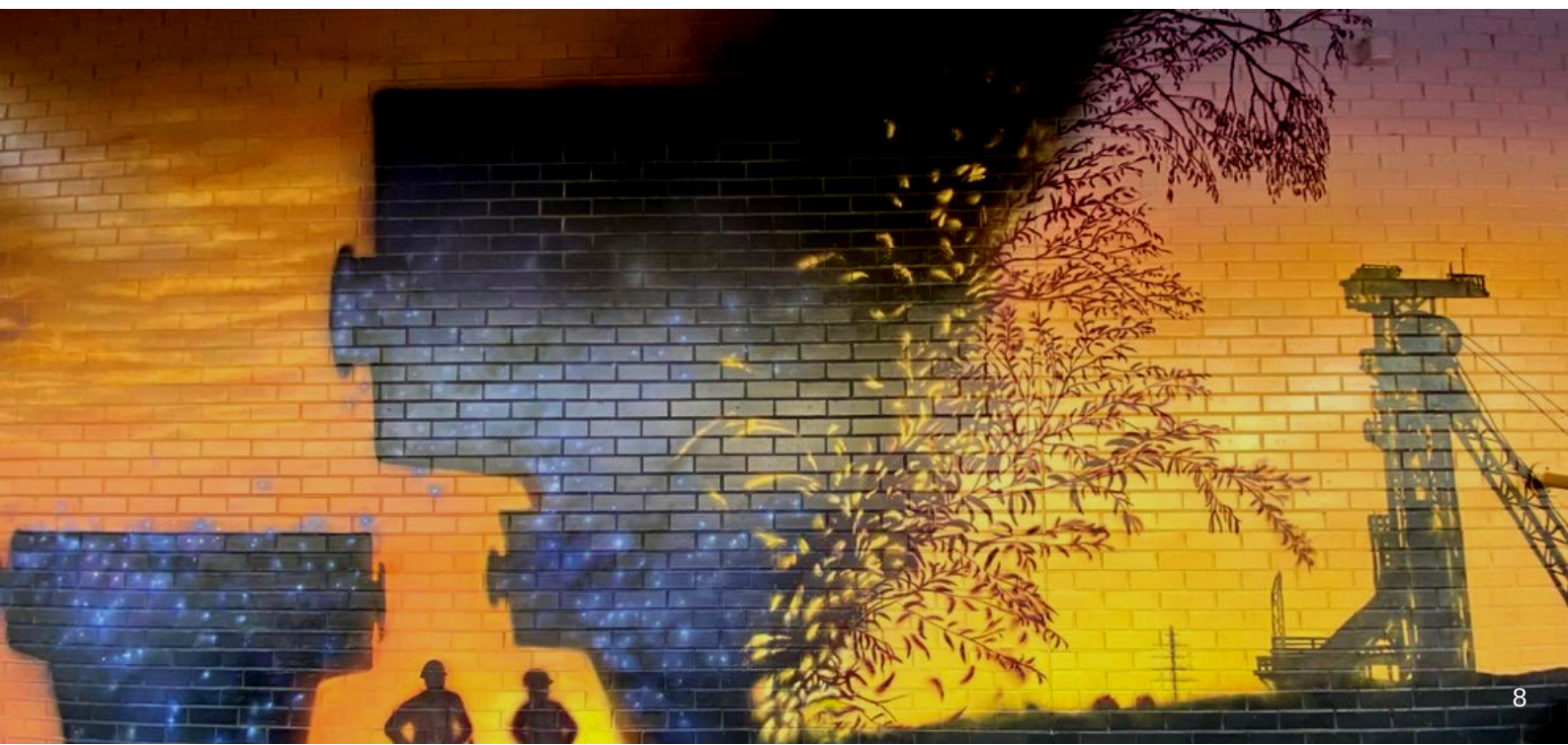
For the purposes of this application, “Person who Represents Others” means individuals who represent other people, perform activities on behalf of a body of people, or owe duties of trust to a broader group of people, including:

- Union leaders
- Community leaders
- Indigenous leaders
- Heads of stakeholder groups and their agents or representatives

Definition of Close Relative

For the purposes of this application, “Close Relative” means:

- parent, spouse/partner, child, or sibling of that person; or
- parent, child or sibling of the spouse/partner of that person.



OUR CHARTER AND VALUES

Charter

We are BHP, a leading global resources company.

Our purpose is to create long-term shareholder value through the discovery, acquisition, development and marketing of natural resources.

Our strategy is to own and operate large, long-life, low-cost, expandable, upstream assets diversified by commodity, geography and market.

Our Values

Sustainability - Putting health and safety first, being environmentally responsible and supporting our communities.

Integrity - Doing what is right and doing what we say we will do.

Respect - Embracing openness, trust, teamwork, diversity and relationships that are mutually beneficial.

Performance - Achieving superior business results by stretching our capabilities.

Simplicity - Focusing our efforts on the things that matter most.

Accountability - Defining and accepting responsibility and delivering on our commitments.

We are Successful When

Our people start each day with a sense of purpose and end the day with a sense of accomplishment.

Our teams are inclusive and diverse.

Our communities, customers and suppliers value their relationships with us.

Our asset portfolio is world-class and sustainably developed.

Our operational discipline and financial strength enables our future growth.

Our shareholders receive a superior return on their investment.

For more information on BHP's Community Grants Program please contact us.

olympicdamcorporateaffairs@bhp.com