

MT ARTHUR MINE COMPLEX

COMMUNITY CONSULTATIVE COMMITTEE MEETING AGENDA

2.00pm Wednesday 6 August 2014

Mt Arthur Coal Administration Extension Meeting Room 2

Time (PM)		Agenda item	Responsibility
2:00	1	Housekeeping and safety	Chairperson
2:03	2	Declaration of pecuniary interest	Chairperson
2:05	3	Confirmation of previous meeting minutes	Chairperson
2:10	4	Action points since last meeting	Chairperson
2:20	5	Overview of operations	Andrew Garratt / Justin Doherty
2:40	6	Overview of environment	Joel Chin
2:45	7	Environmental monitoring data	Joel Chin
3:00	8	Update on Upper Hunter Mining Dialogue	NSW Minerals Council
3:30	9	Overview of community support	Deirdra McCracken-Tindale
3:35	10	Community complaints	Chairperson
3:45	11	General business	Chairperson
3:58	12	Next meeting date	Chairperson
4:00	13	Meeting close	Chairperson

Mt Arthur Coal Community Consultative Committee Report August 2014

Agenda Item 4 - Action points since last meeting (April 2014)

ACTION ITEM NO.	ITEM	ACTIONED BY
1	Mt Arthur Coal to provide additional information about water management	Please see information in section 3 of action points from April 2014 CCC meeting.
2	Discuss whether pollution gear on heavy vehicles can be discussed at the next Mine Managers Forum with MSC Mayor	CP
3	Mt Arthur Coal Geologist Teresa Coleman to call John Bancroft re Macleans Hill drilling	AF
4	Mt Arthur Coal will endeavour to provide correlation between DF06 results and Bengalla Mine's closest monitor	BM
5	Mt Arthur Coal to share NSW Health fact sheet re blast fume with CCC members	AF
6	Details of elevated EC and pH results from August, October and December 2013 and February 2014 to be provided at next CCC meeting	CE
7	Mt Arthur Coal to provide real time monitoring results on an hourly basis (in colour) for 16 and 22 January 2014 and 3 and 14 February 2014	CE
8	Mt Arthur Coal to address project approval conditions with respect to placement of lights and report back to CCC	Please see information in section 10 of the minutes.
9	Mt Arthur Coal will provide responses to questions from CCC members within 28 days of a CCC meeting in accordance with the NSW Planning guidelines	AF
10	Chair will request in writing to NSW Planning D-G that an independent chair and an independent minute taker be appointed	CP

Agenda Item 5 - Overview of Operations (May - Jun 2014)

- 47.5 ha of land was rehabilitated during the months of May and June 2014.
- The total number of people employed at Mt Arthur Coal (employees and contractors) was 1,801 at the end of June 2014.
- Overview of operations to be provided by Justin Doherty.

Agenda Item 6 - Overview of Environment (May - Jun 2014)

- Mt Arthur Coal received a penalty infringement notice from the Department of Planning and Environment (DP&E) on 27 June 2014 for a failure to comply with Condition 23a of the mine's Project Approval, to implement best practice air quality management, by carrying out dumping operations on an elevated and exposed area during adverse weather conditions on 24 June 2014.
- Mt Arthur Coal submitted a revised Biodiversity Management Plan to DP&E on 30 June on 16 June 2014 in a format compliant with the Department's guideline.
- A revised Blast Management Plan was approved by DP&E on 26 June 2014 following changes to the Blast Fume Management Plan incorporated in this document.
- The following incidents related to monitoring results occurred at Mt Arthur Coal during May and June and Mt Arthur Coal notified the relevant authorities accordingly:
 - An elevated HVAS result was recorded at the Sheppard Avenue monitor in May. Investigations revealed Mt Arthur Coal's contribution to this elevated annual average result was below statutory limits,
 - One elevated TEOM result was recorded at the Sheppard Avenue monitor in May 2014. Investigations revealed Mt Arthur Coal's contribution to this elevated annual average result was below statutory limits,
 - One elevated TEOM result was recorded at the Sheppard Avenue monitor in June 2014. Investigations revealed Mt Arthur Coal's contribution to this elevated annual average result was below statutory limits.
 - Elevated EC was recorded at groundwater sites OD1049-SURFACE and OD1078-PIEZO during routine sampling in February, April and June 2014. The investigation is currently being undertaken for these elevated results.
 - Elevated EC was recorded at groundwater sites OD1046-PIEZO, OD1049-WH and OD1079-PIEZO during routine sampling in February, April and June 2014. The investigation is currently being undertaken for these elevated results.

Agenda Item 7 - Environmental Monitoring Data (May - Jun 2014)

This monitoring data is provided for your reference prior to the meeting. Exceedances or elevated results since the last meeting will be discussed by exception only.

Monitoring locations are shown in Appendix 1.

1. Blasting Data (May - Jun 2014)

Blasting Criteria:

Blast Impact Assessment Criteria

10. The Proponent shall ensure that blasts on site do not cause exceedances of the criteria in Table 8.

Table 8: Blasting impact assessment criteria

Location	Airblast overpressure (dB(Lin Peak))	Ground vibration (mm/s)	Allowable exceedance
Residence on privately owned land	120	10	0%
	115	5	5% of the total number of blasts over a period of 12 months
Heritage sites, including Edinglassie and Rous Lench	133	10	0%

Blasting Summary:

- There were no road closures in May and two in June, on 2 and 20 June.
- There were 32 blast events in May and June.
- 7 blasts were delayed in May and June due to unfavourable weather conditions.
- There were no reportable blast fume events in May or June.
- In accordance with the approved Blast Monitoring Program, Mt Arthur Coal installed two new statutory monitoring stations at North Yammanie (BP10) and Balmoral Road (BP11) on 26 and 27 June 2014, respectively. These monitors effectively replaced the former monitors located at Antiene (BP05) and Yammanie (BP06), which were decommissioned in June 2013, in accordance with the approved Blast Monitoring Program. Mt Arthur Coal now has six statutory blast monitors in total.
- There were no elevated blast vibration or blast overpressure noise results recorded during May or June.

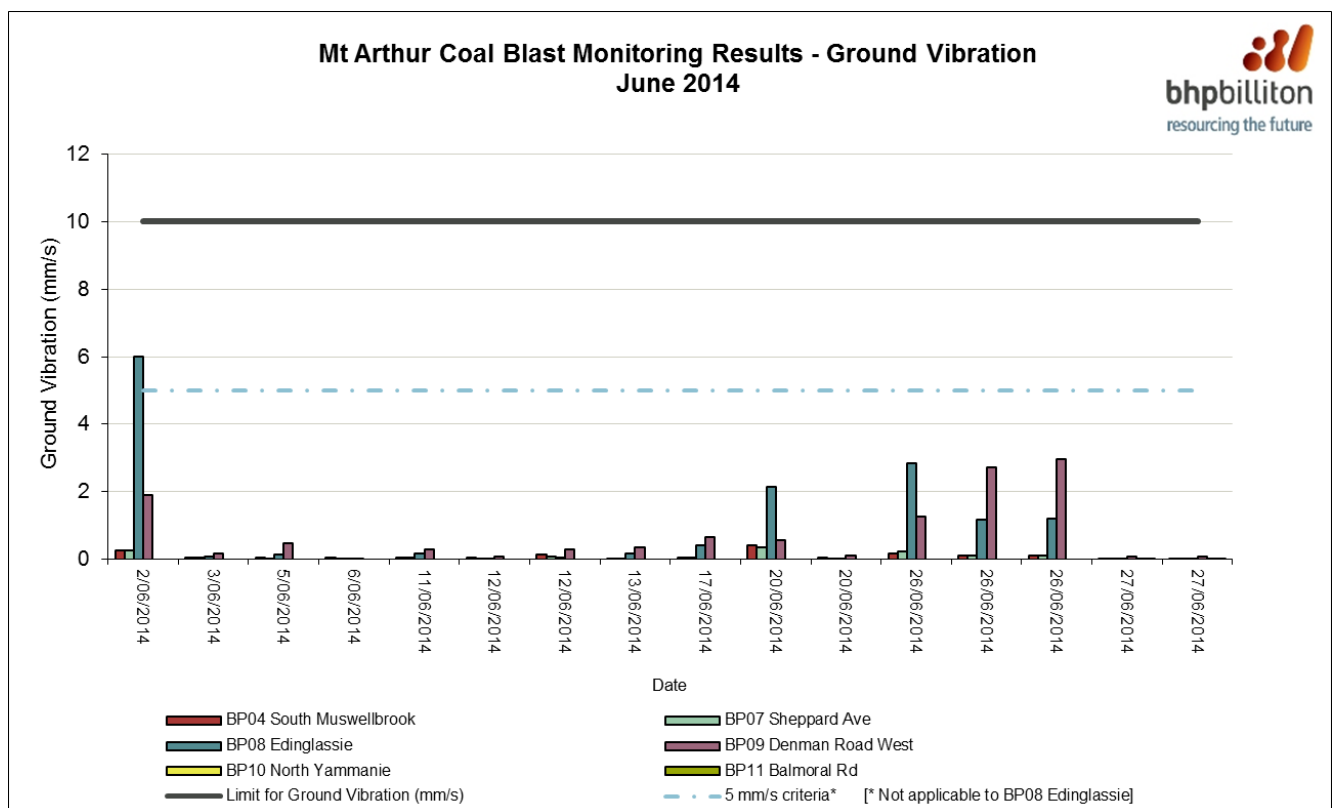
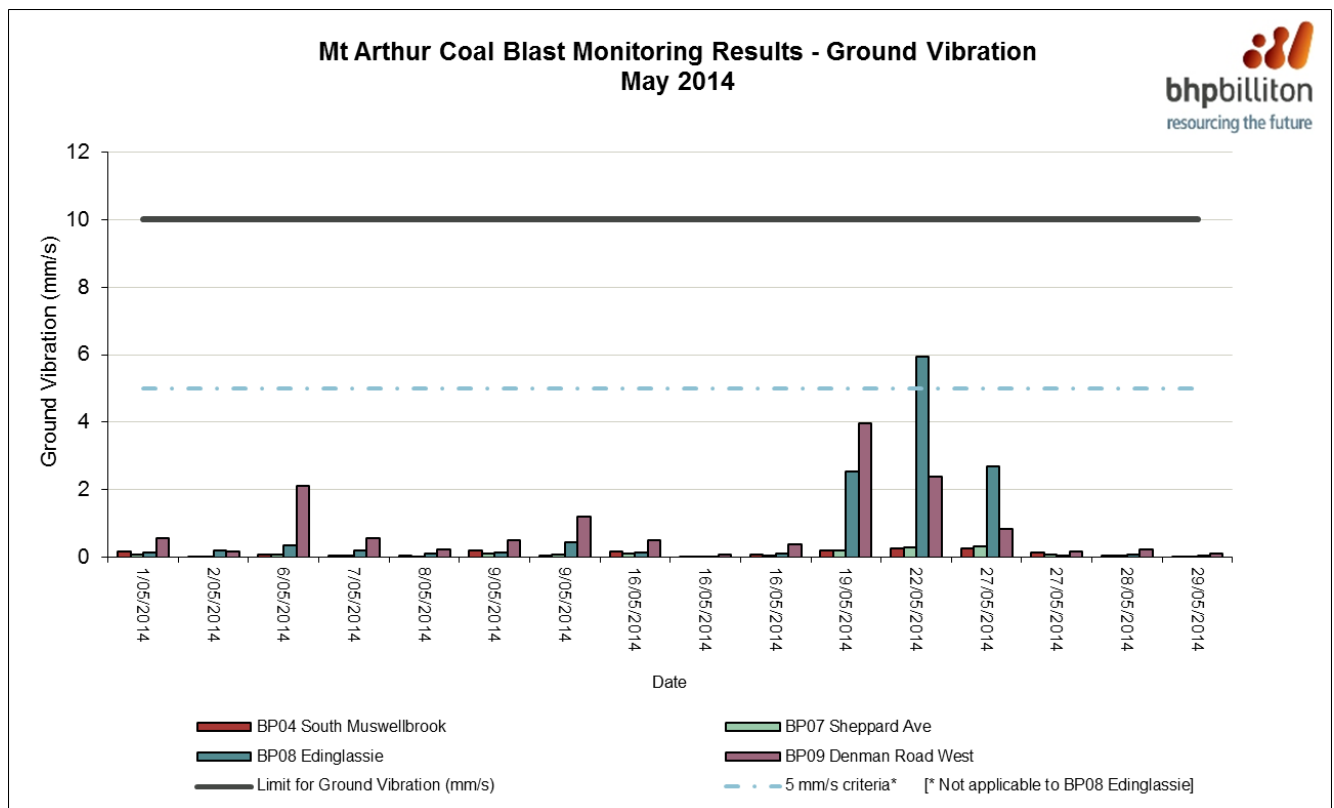
Blast Monitor Data Capture Rates:

	South Muswellbrook	Sheppard Avenue	Edinglassie	Denman Road West	North Yammanie^	Balmoral Road^
Site ID	BP04	BP07	BP08	BP09	BP10	BP11
May-14	100%	100%	100%	100%	-	-
Jun-14	100%	100%	100%	100%	100%	100%

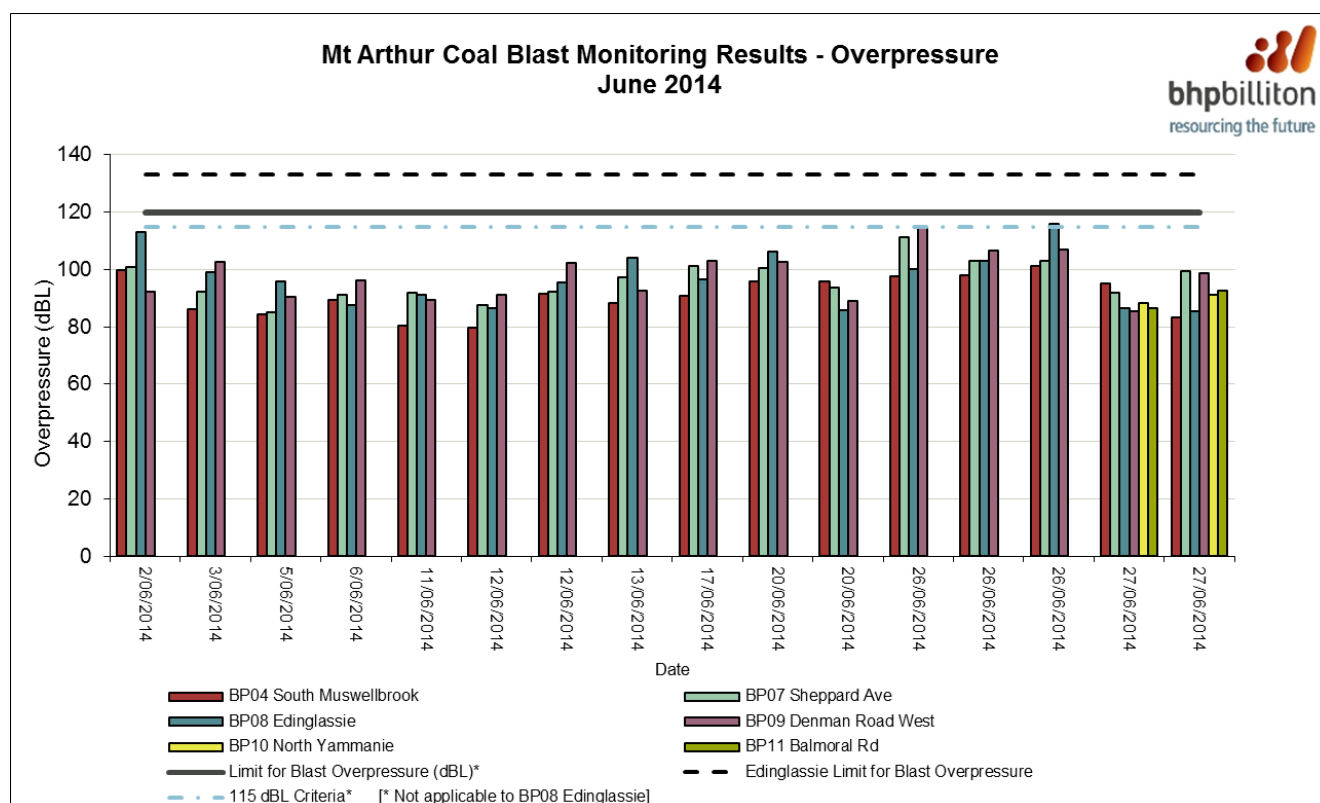
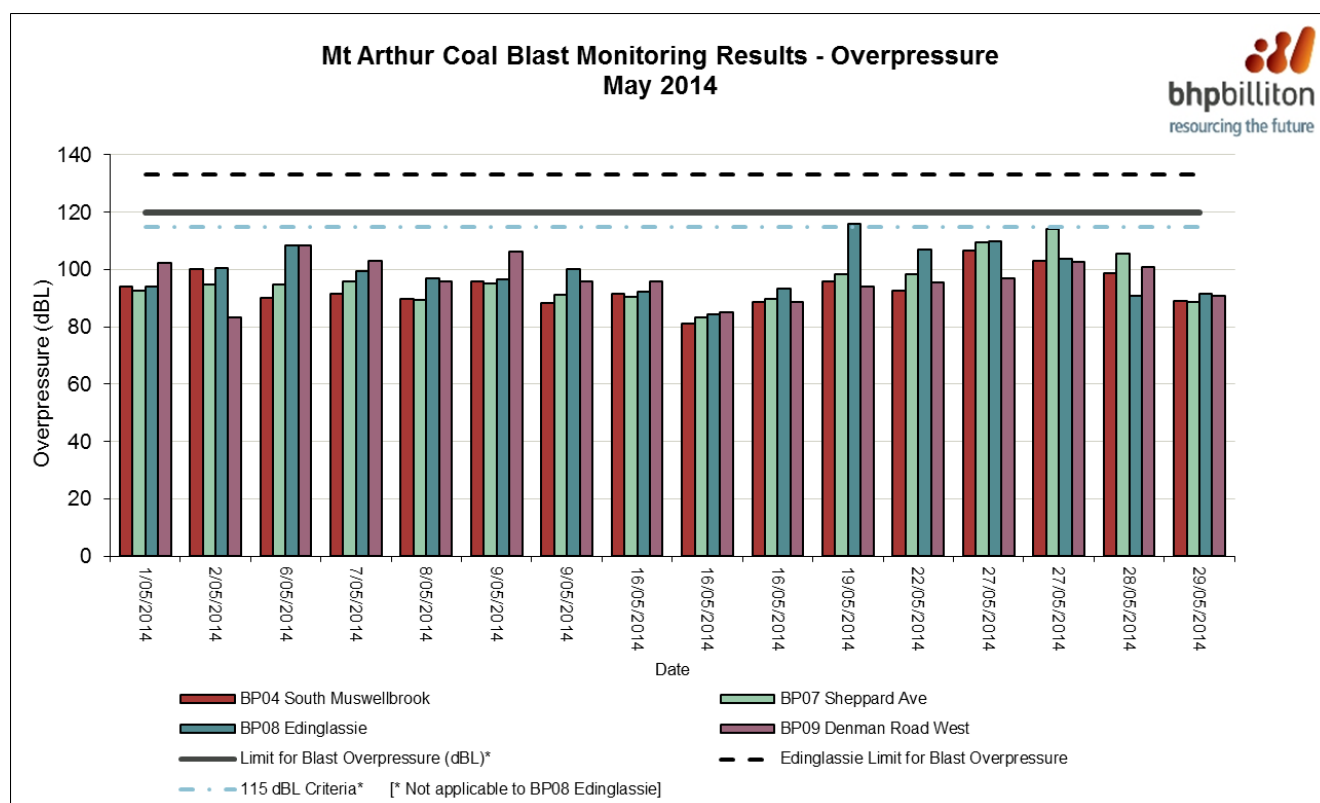
^ New blast monitors installed in June 2014.

Note: The data capture rate is the percentage of the total number of blasts for which blast monitoring results were obtained.

Ground Vibration:



Airblast Overpressure:



2. High Volume Air Sampling (HVAS) Data (May - Jun 2014)

HVAS Criteria:

Impact Assessment Criteria

20. The Proponent shall ensure that the dust emissions generated by the Mt Arthur mine complex do not cause additional exceedances of the air quality impact assessment criteria listed in Tables 9, 10 and 11 at any residence on privately owned land, or on more than 25 percent of any privately owned land, except where such exceedance is predicted in the EA. For these properties, the Proponent shall comply with the air quality predictions in the EA.

Table 9: Long term impact assessment criteria for particulate matter

Pollutant	Averaging period	Criterion	Basis
Total suspended particulate (TSP) matter	Annual	90 µg/m ³	Total ¹
Particulate matter < 10 µm (PM ₁₀)	Annual	30 µg/m ³	Total ¹

Table 10: Short term impact assessment criterion for particulate matter

Pollutant	Averaging period	Criterion	Basis
Particulate matter < 10 µm (PM ₁₀)	24 hour	50 µg/m ³	Total ¹

HVAS Summary:

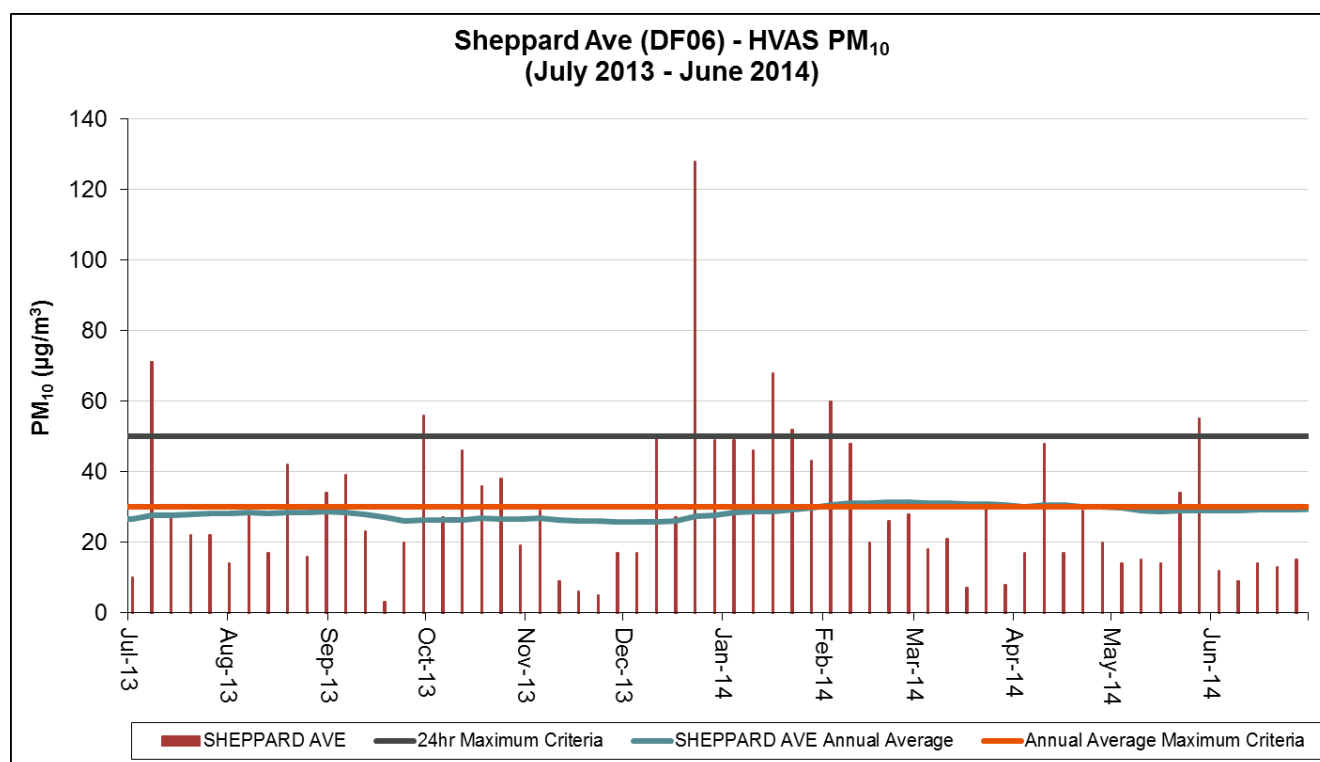
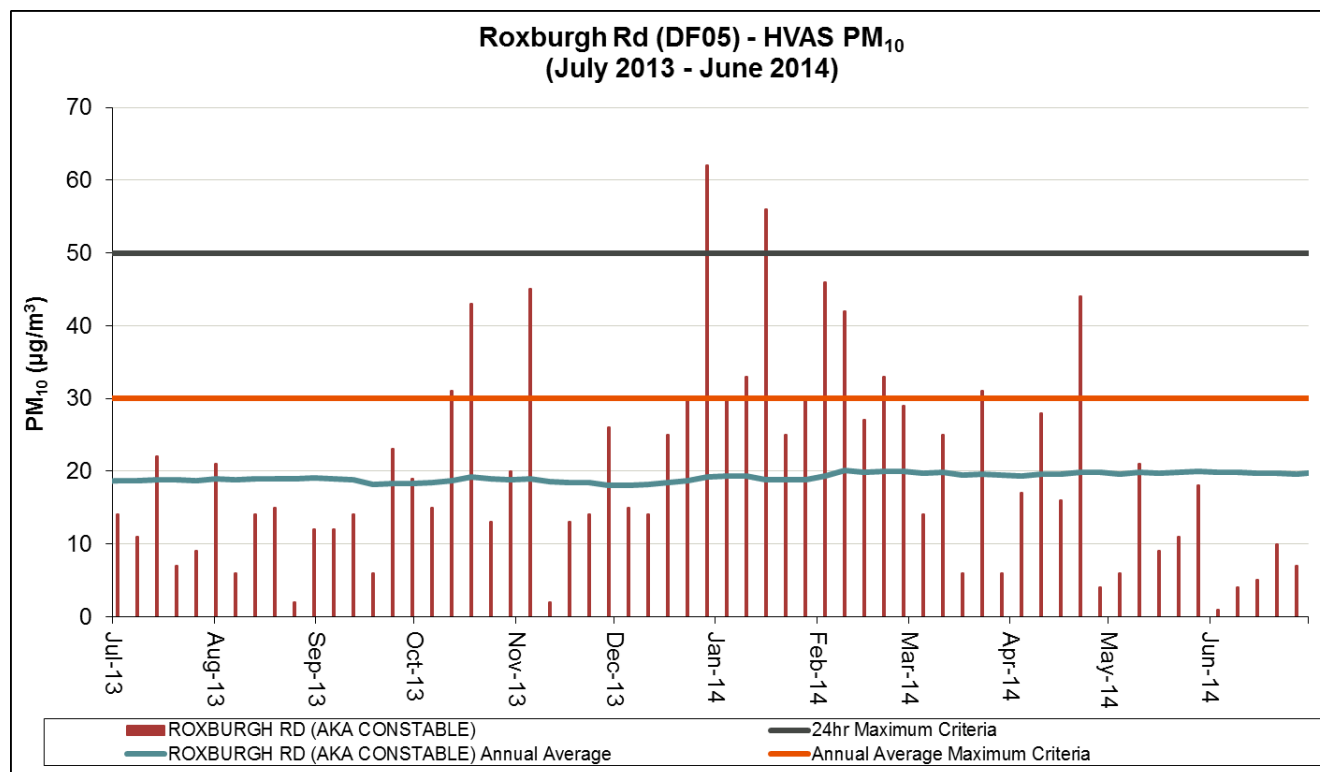
- Mt Arthur Coal has three statutory HVAS monitors.
- All statutory HVAS annual averages were below relevant regulatory criteria.
- The following elevated results were recorded during May and June:

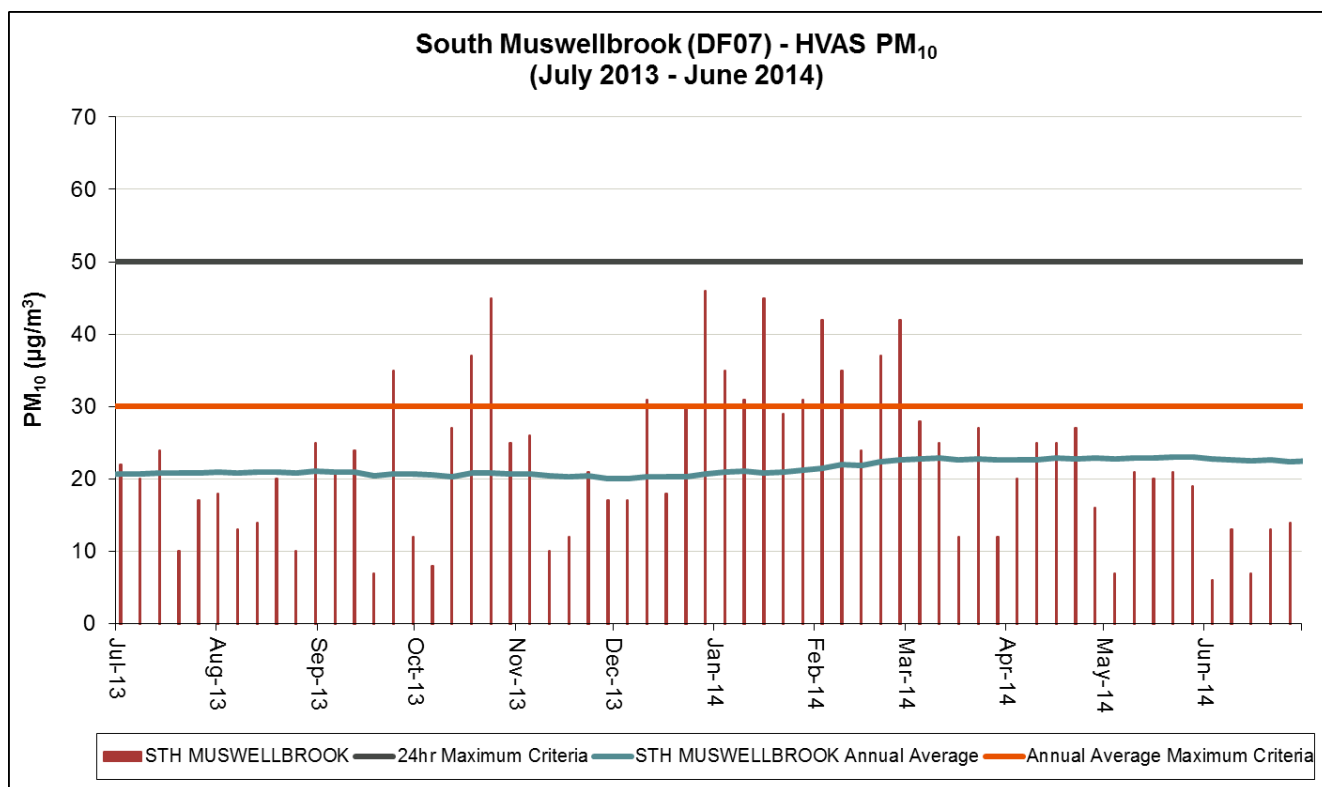
Date	Site	Elevated PM ₁₀ result (µg/m ³)	Mt Arthur Coal's contribution (µg/m ³)	Exceedance investigation results
28/5/14	Sheppard Avenue	55.0	0.0	This monitor is located near Muswellbrook Racecourse to the north-north-east of the operation. Wind direction was predominately from the south east on this day. During approximately 0.00 per cent of the day this monitor was located downwind of Mt Arthur Coal's operations.

HVAS Data Capture Rates:

	Roxburgh Road (Constable)	Sheppard Avenue	South Muswellbrook
Site ID	DF05	DF06	DF07
May-14	100%	100%	100%
Jun-14	100%	100%	100%

HVAS PM₁₀:





3. Real-time Air Quality Monitoring Data (May - Jun 2014)

Real-time Air Quality Monitoring Criteria:

Impact Assessment Criteria

20. The Proponent shall ensure that the dust emissions generated by the Mt Arthur mine complex do not cause additional exceedances of the air quality impact assessment criteria listed in Tables 9, 10 and 11 at any residence on privately owned land, or on more than 25 percent of any privately owned land, except where such exceedance is predicted in the EA. For these properties, the Proponent shall comply with the air quality predictions in the EA.

Table 9: Long term impact assessment criteria for particulate matter

Pollutant	Averaging period	Criterion	Basis
Total suspended particulate (TSP) matter	Annual	90 µg/m ³	Total ¹
Particulate matter < 10 µm (PM ₁₀)	Annual	30 µg/m ³	Total ¹

Table 10: Short term impact assessment criterion for particulate matter

Pollutant	Averaging period	Criterion	Basis
Particulate matter < 10 µm (PM ₁₀)	24 hour	50 µg/m ³	Total ¹

Real-time Air Quality Monitoring Summary:

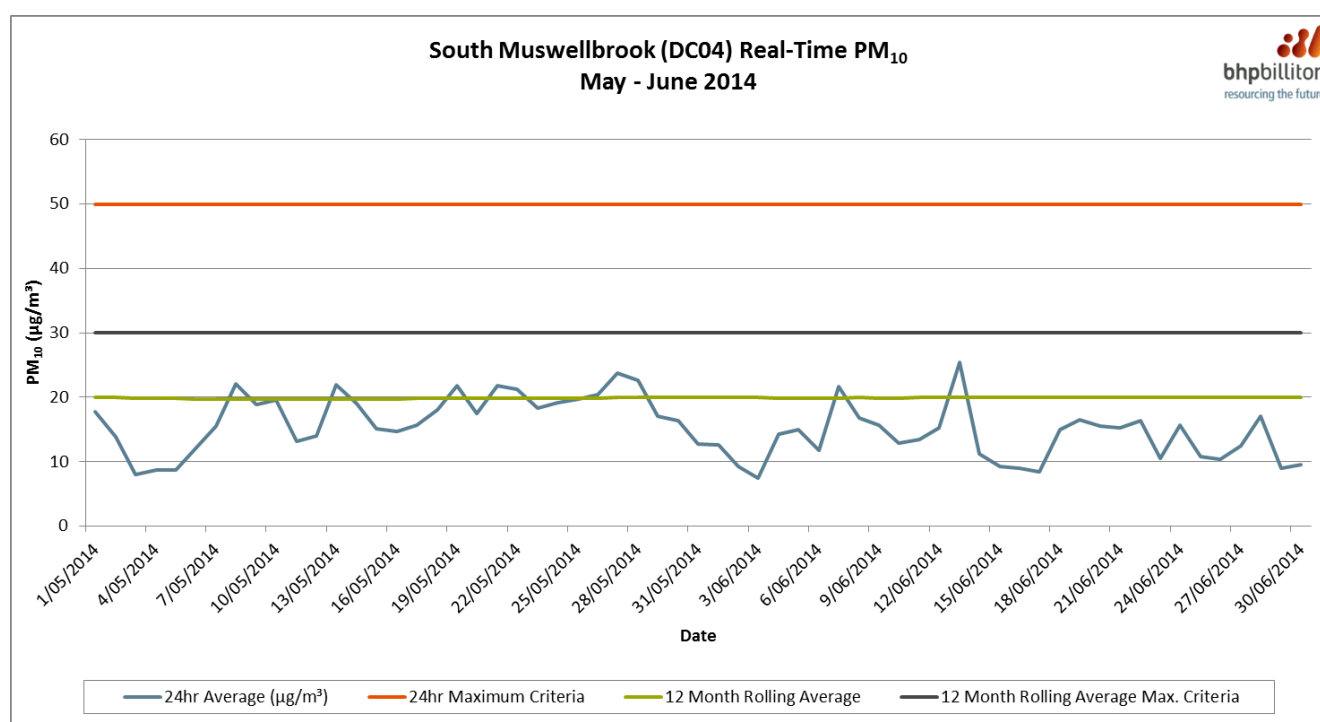
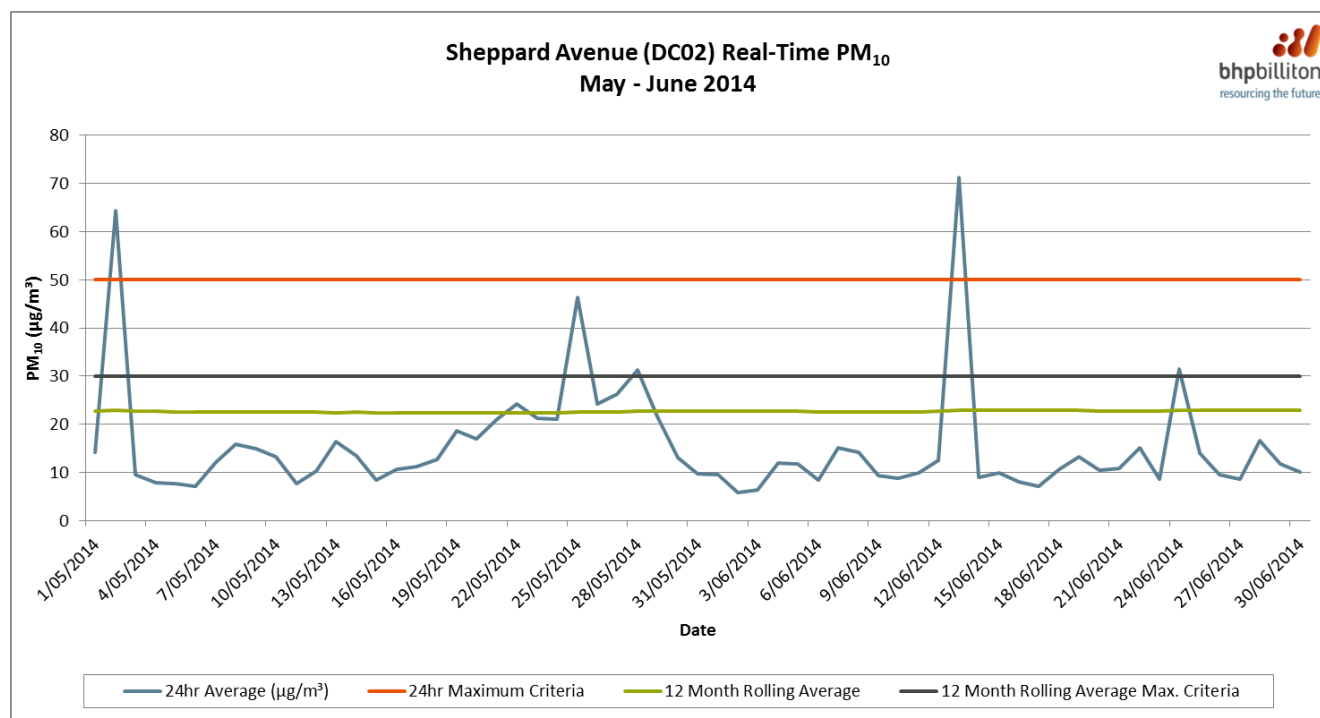
- The real-time air quality monitors used by Mt Arthur Coal are called Tapered Element Oscillating Microbalances (TEOMs).
- Mt Arthur Coal has six statutory TEOMs.
- All statutory real-time air quality monitors currently have annual averages below regulatory criteria.
- The following elevated results were recorded during May and June:

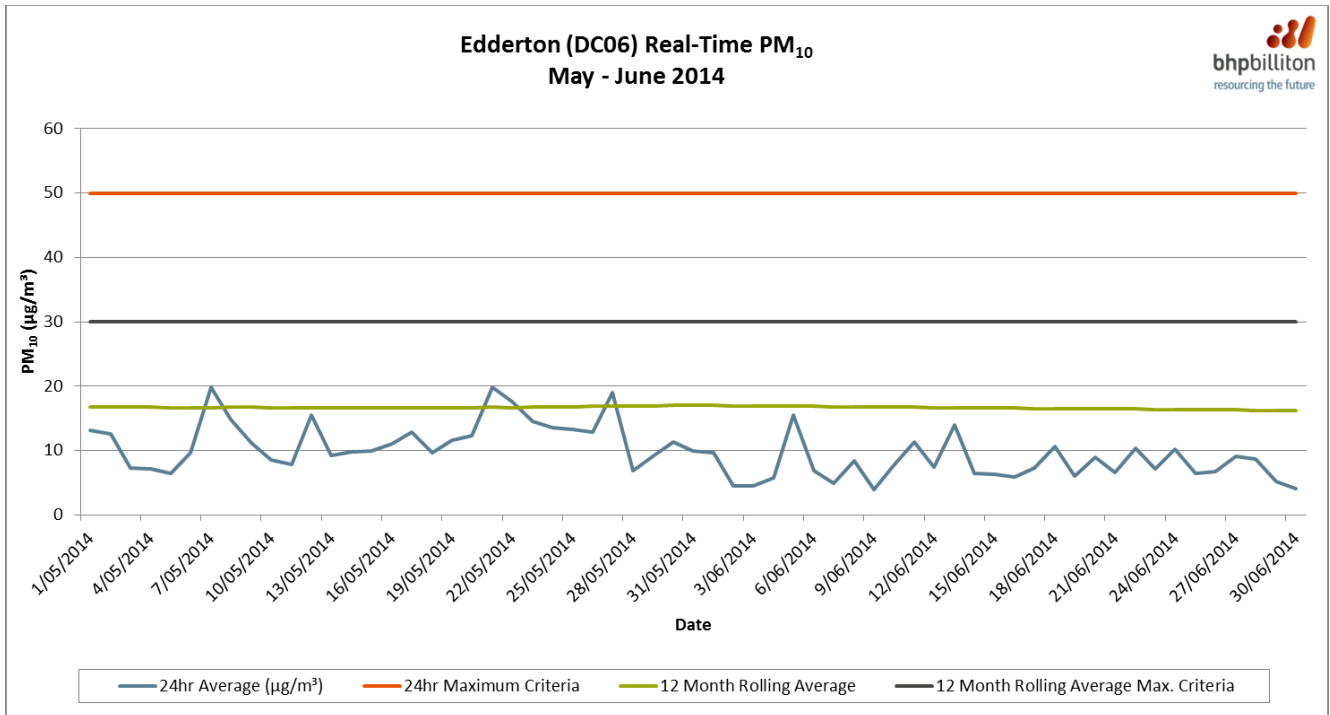
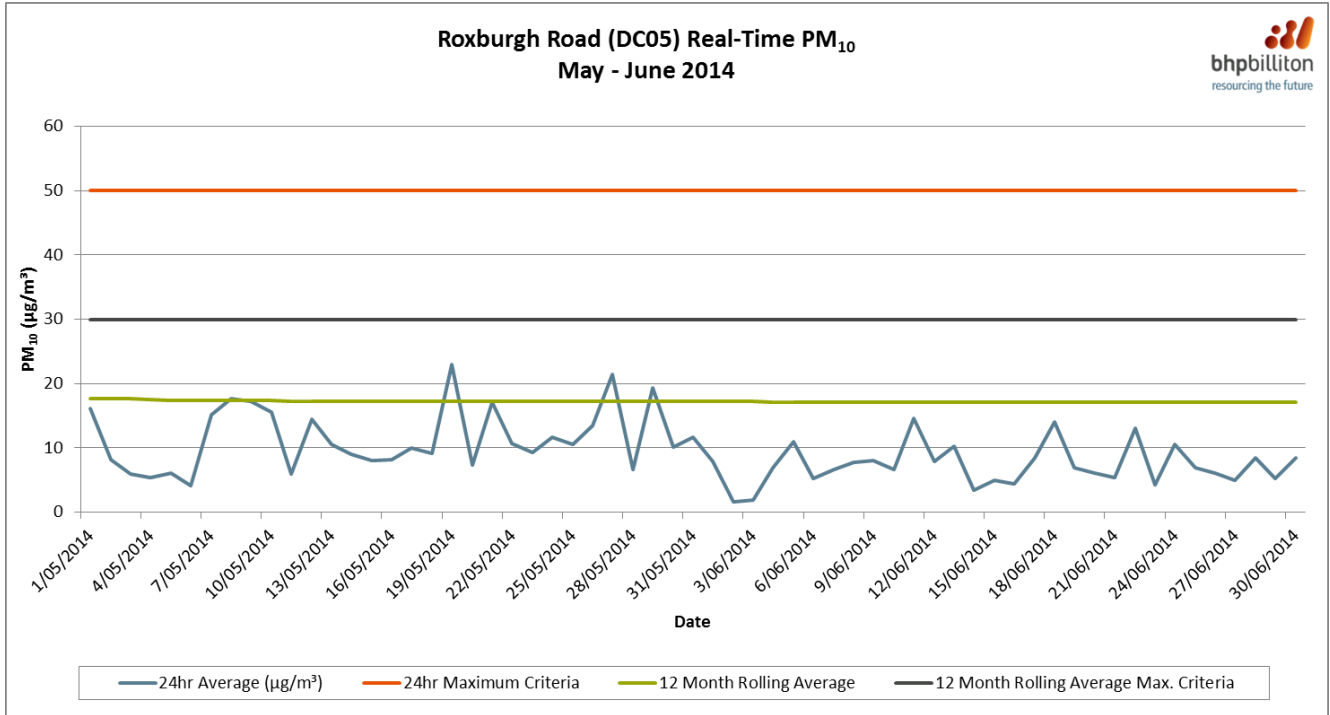
Date	Site	Elevated PM ₁₀ result (µg/m ³)	Mt Arthur Coal's contribution (µg/m ³)	Exceedance investigation results
2/5/14	Sheppard Avenue	64.4	0.0	This monitor is located near Muswellbrook Racecourse and monitors PM ₁₀ levels to the north-north-east of the operation. Further investigation of meteorological conditions indicates that the wind direction was predominately from the north. During approximately 0 per cent of the day this monitor was located downwind of Mt Arthur Coal's operations. A race meet was also held at Muswellbrook Racecourse on this day. When compared to other TEOM monitors, this result is inconsistent and can be attributed to a localised source.
13/6/14	Sheppard Avenue	71.3	6.8	This monitor is located near Muswellbrook Racecourse and monitors PM ₁₀ levels to the north-north-east of the operation. Further investigation of meteorological conditions indicates that the wind direction was predominately from the north in the morning and from the east in the afternoon. During approximately 11.46 per cent of the day this monitor was located downwind of Mt Arthur Coal's operations. A race meet was also held at Muswellbrook Racecourse on this day. When compared to other TEOM monitors, this result is inconsistent and can be attributed to a localised source.

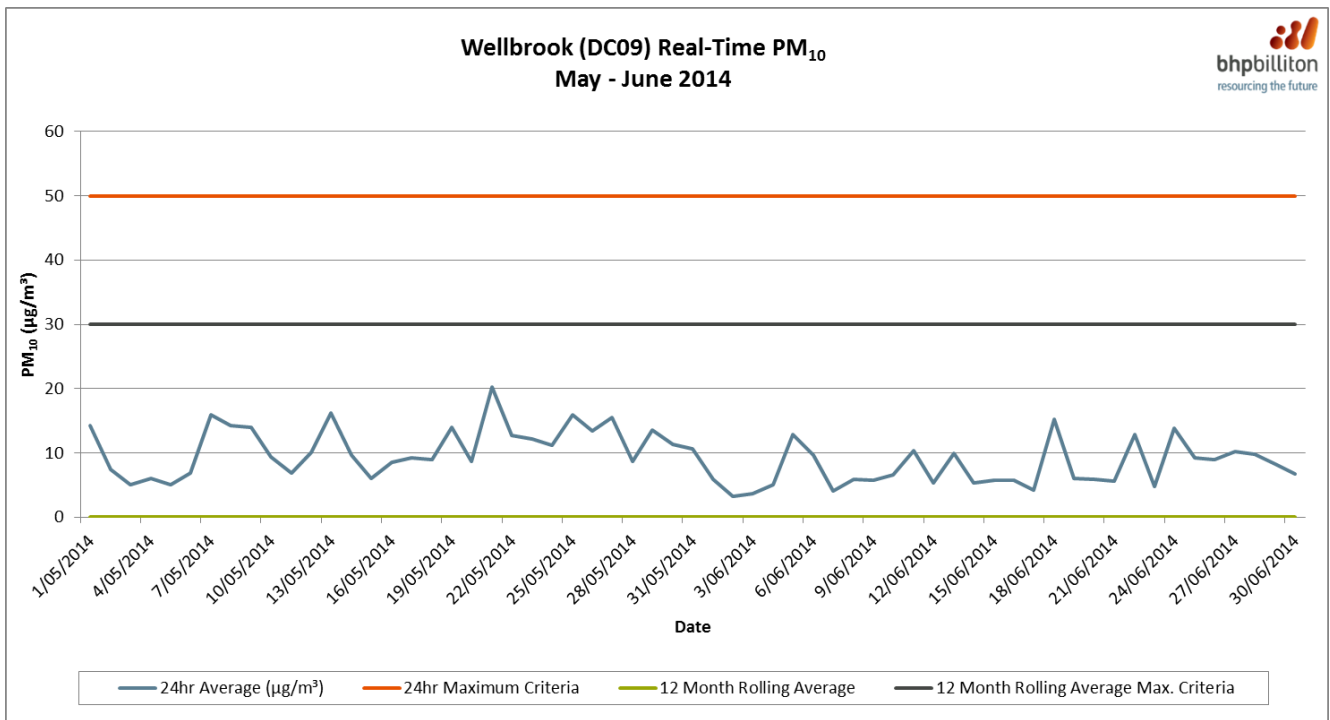
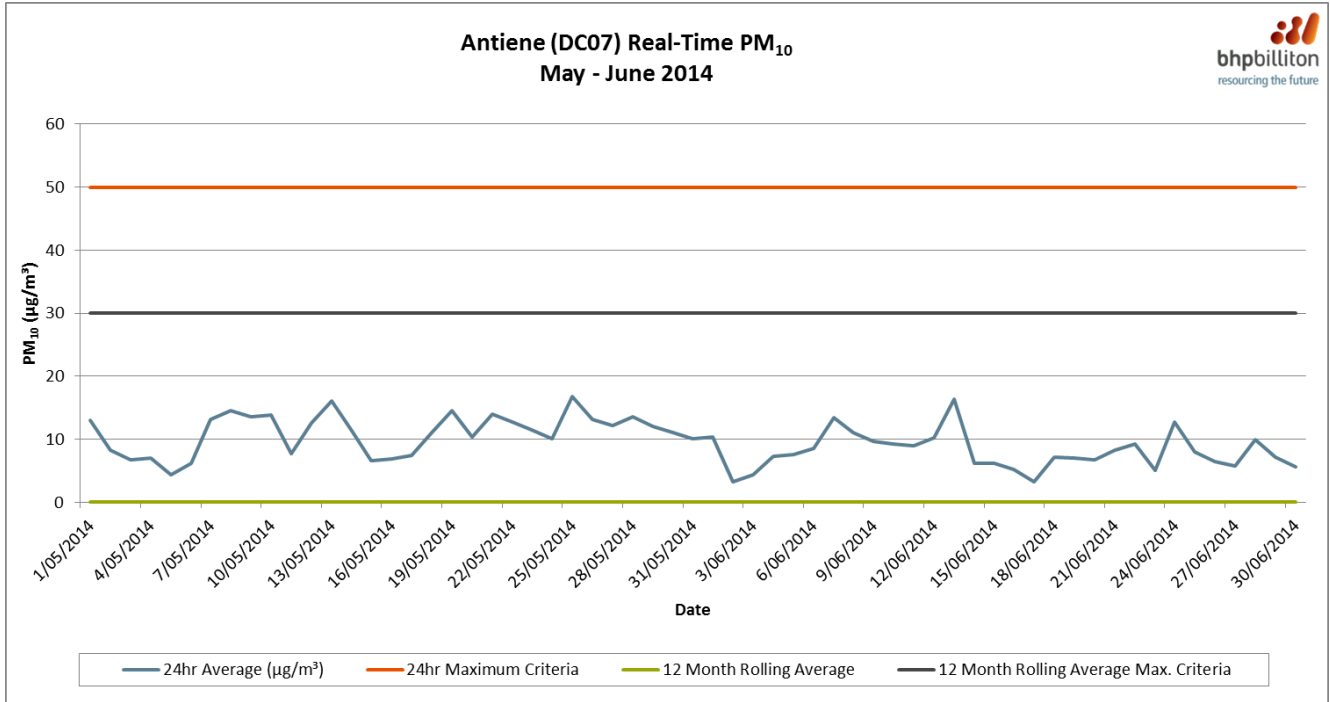
Real-time Air Quality Monitoring Data Capture Rates:

	Sheppard Avenue	South Muswellbrook	Roxburgh Road	Edderton Homestead	Antiene	Wellbrook
Site ID	DC02	DC04	DC05	DC06	DC07	DC09
May-14	100%	100%	100%	100%	100%	100%
Jun-14	100%	100%	100%	100%	100%	100%

TEOM PM₁₀:







4. Depositional Dust Data (May - Jun 2014)

Depositional Dust Criteria:

Table 11: Long term impact assessment criteria for deposited dust

Pollutant	Averaging period	Maximum increase² in deposited dust level	Maximum total¹ deposited dust level
Deposited dust	Annual	2 g/m ² /month	4 g/m ² /month

¹ Background concentrations due to all other sources plus the incremental increase in concentrations due to the mine complex alone.

² Incremental increase in concentrations due to the mine complex alone.

Note: Deposited dust is assessed as insoluble solids as defined by Standards Australia, AS/NZS 3580.10.1:2003: Methods for Sampling and Analysis of Ambient Air - Determination of Particulate Matter - Deposited Matter - Gravimetric Method.

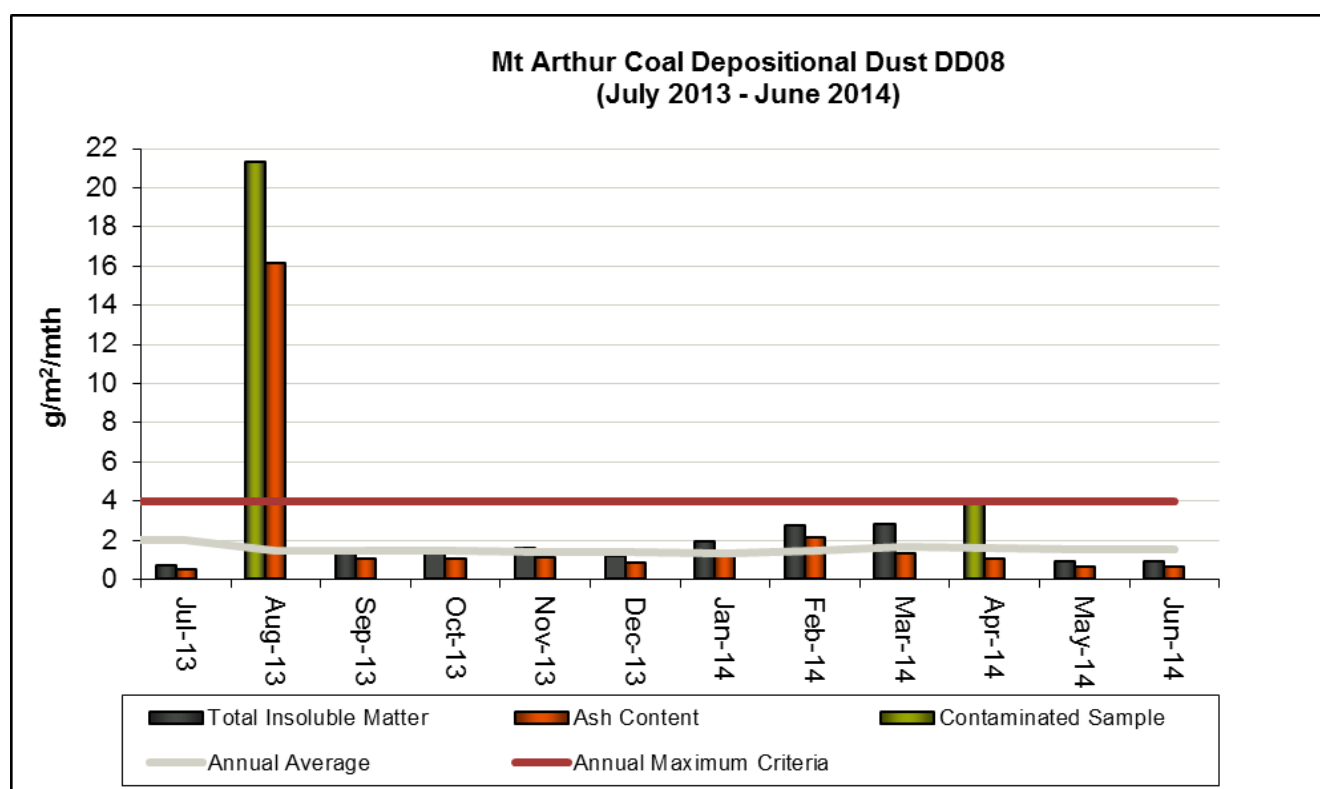
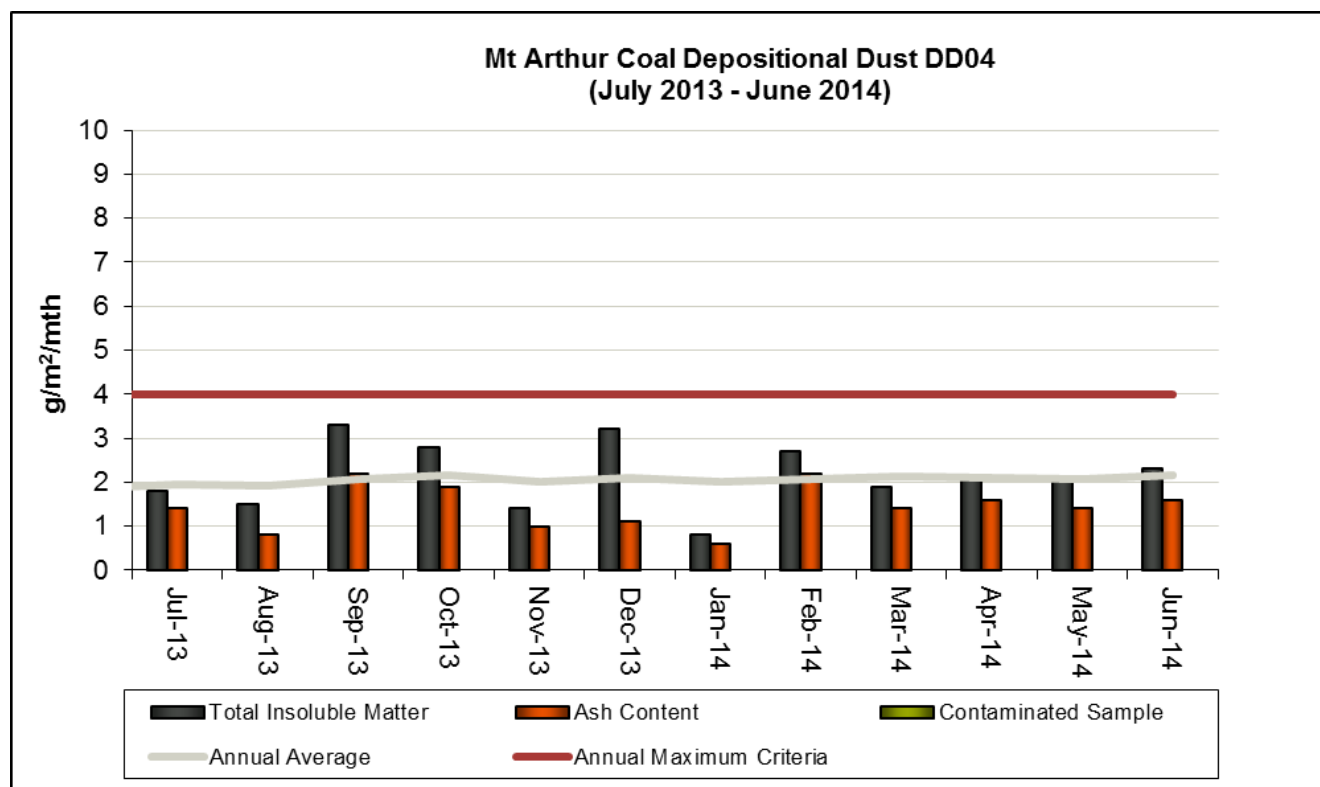
Depositional Dust Summary:

- Mt Arthur Coal's air quality monitoring network contains 13 depositional dust gauges, which includes six statutory monitors, as listed in the table below and discussed in this section.
- All annual rolling averages were below relevant regulatory criteria at the statutory gauges.
- There were no contaminated depositional dust results in May or June.

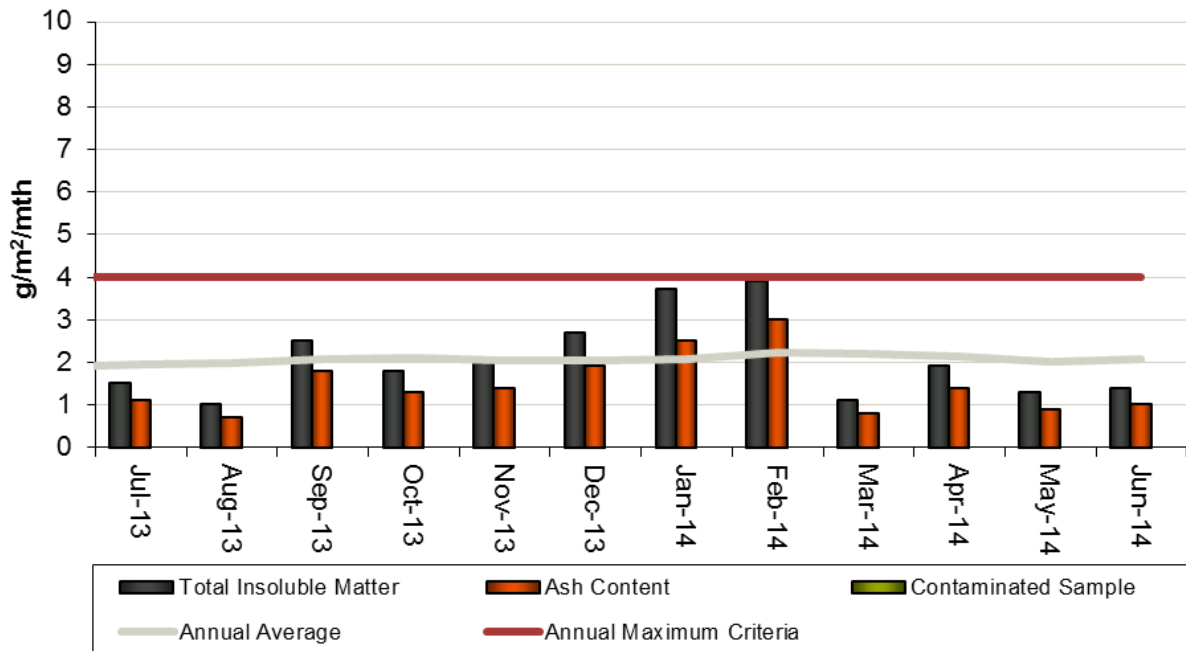
Depositional Dust Data Capture Rates:

	Antiene	Edderton Homestead	Roxburgh Road	Denman Road West	Sheppard Avenue	South Muswellbrook
Site ID	DD04	DD08	DD14	DD15	DD19	DD21
May-14	100%	100%	100%	100%	100%	100%
Jun-14	100%	100%	100%	100%	100%	100%

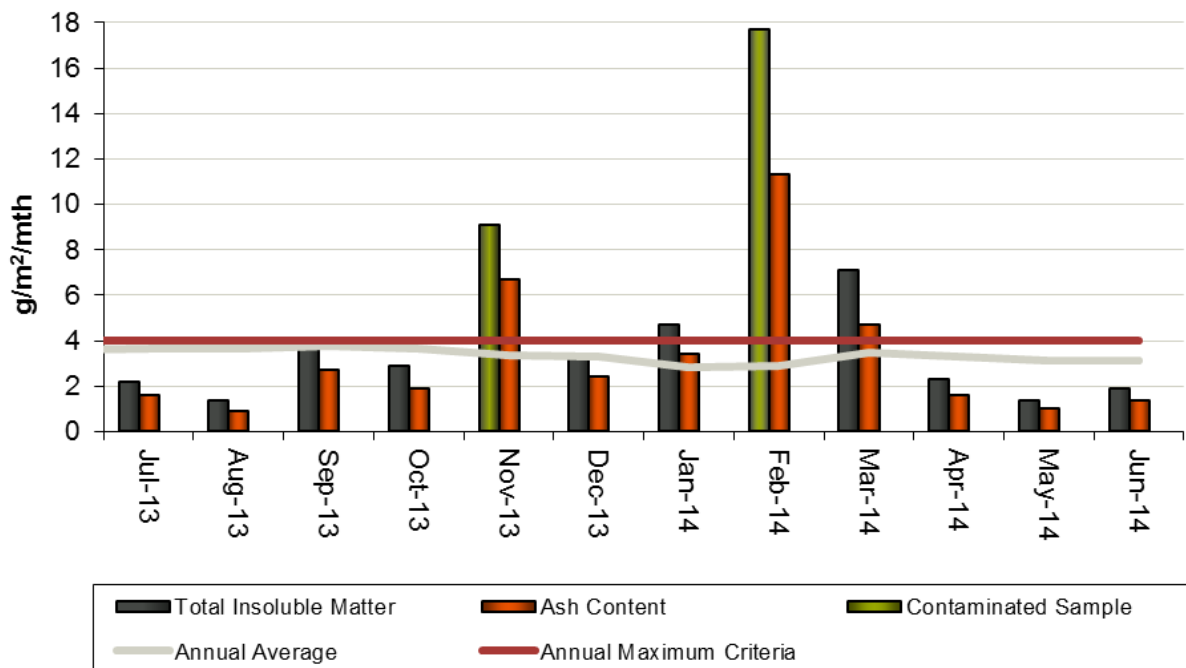
Depositional Dust:



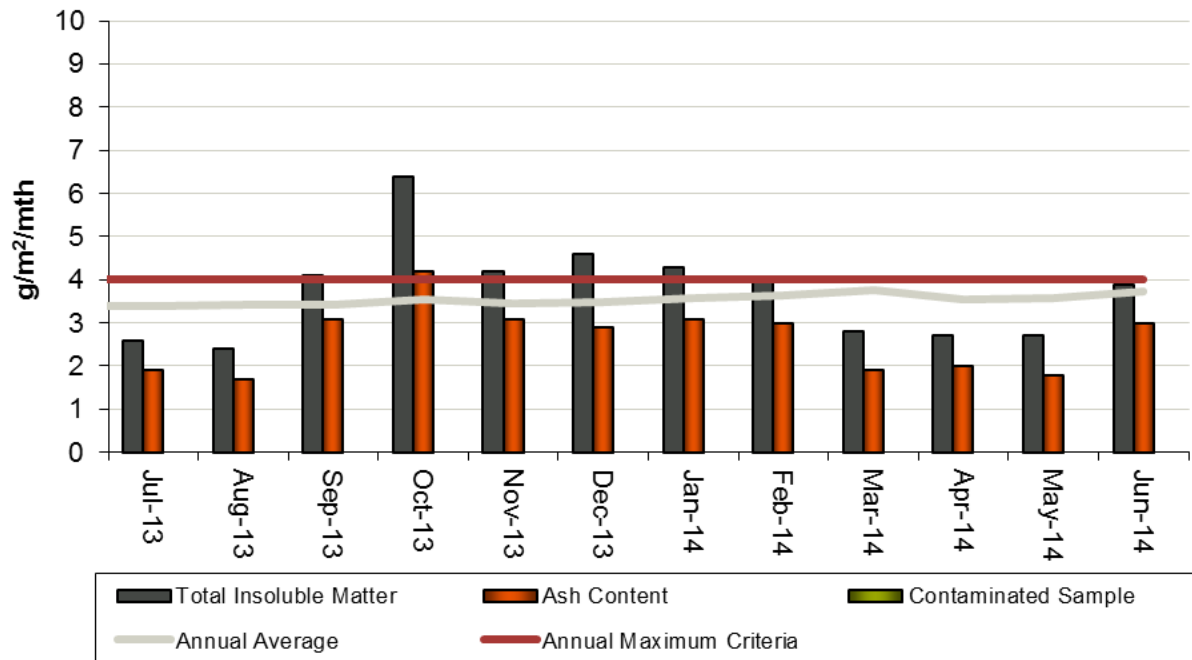
**Mt Arthur Coal Depositional Dust DD14
(July 2013 - June 2014)**



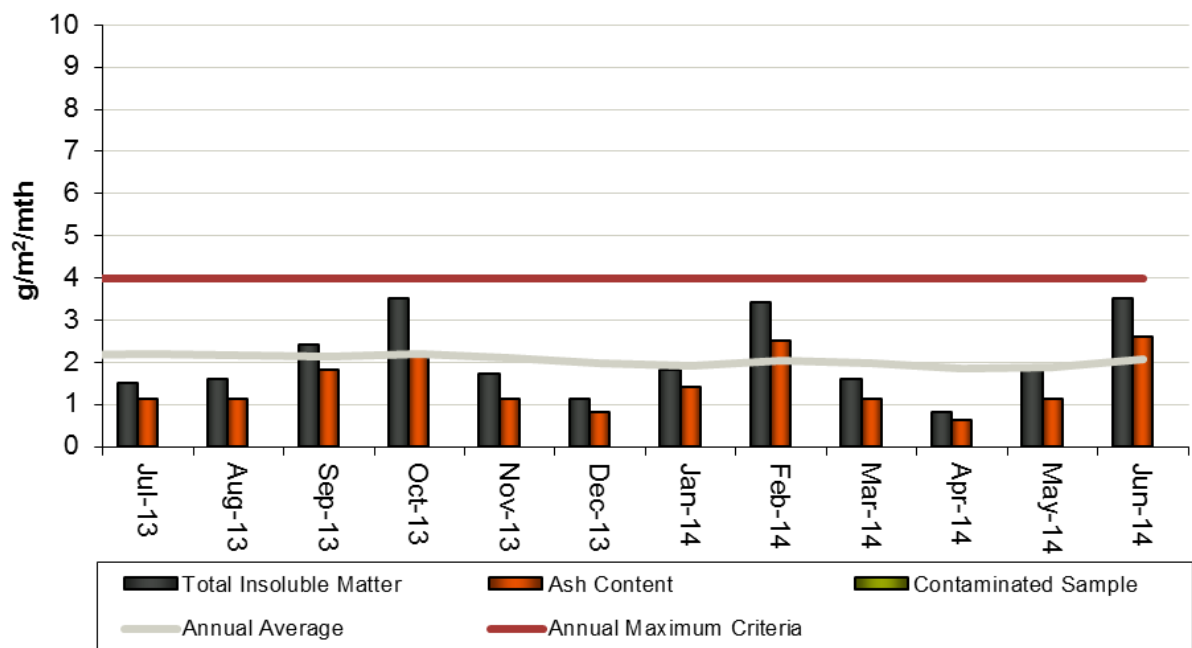
**Mt Arthur Coal Depositional Dust DD15
(July 2013 - June 2014)**



**Mt Arthur Coal Depositional Dust DD19
(July 2013 - June 2014)**



**Mt Arthur Coal Depositional Dust DD21
(July 2013 - June 2014)**



5. Surface Water Data (May - Jun 2014)

Surface Water Criteria:

Table 5: Surface water impact assessment criteria

Focus Area	Parameter	Trigger Value	Monitoring Site
Surface water quality	pH	If recorded value at a monitoring site is outside the range 6.5 – 9.0 for 3 consecutive readings	SW01, SW02, SW03, SW04,SW12, SW13, SW15, SW18
	EC	If recorded value at a monitoring site is greater than the 90 th percentile of baseline data for 3 consecutive readings	
	TSS		

Table 6: Surface water impact assessment trigger values

Site ID	pH		EC (µc/cm)		TSS (mg/L)	
	Low Trigger	High Trigger	90 th Percentile Trigger	Number of data points	90 th Percentile Trigger	Number of data points ¹
SW01	6.5	9.0	9,638	168	55	162
SW02			9,200	132	31	132
SW03			8,394	182	11	173
SW04			12,000	186	29	178
SW09			6,755	46	174	43
SW10			8,440	97	185	96
SW12			5,807	124	89	114
SW13			760	31	1,144	30
SW15			4,739	82	37	73
SW18			3,984	65	15	64

Notes: 1. based on a baseline data up to the 1st of September 2010

Surface Water Summary:

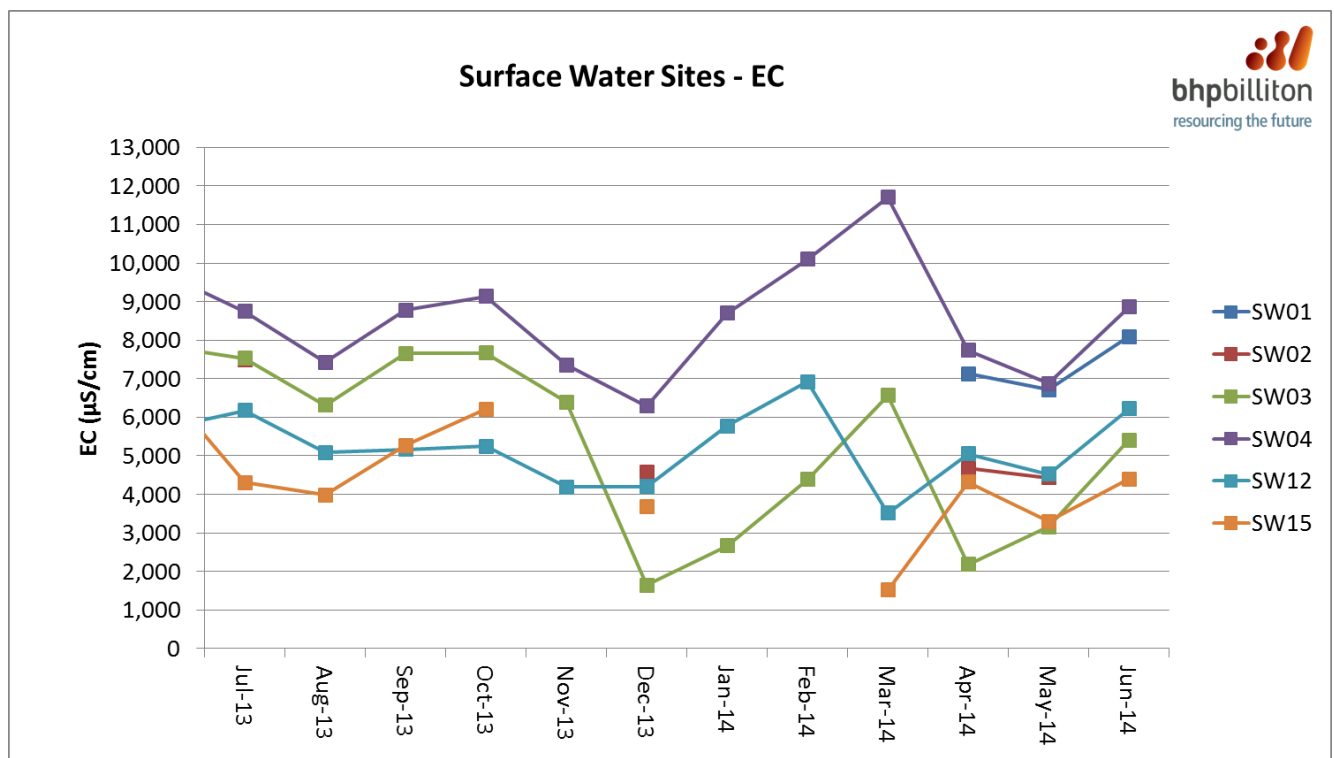
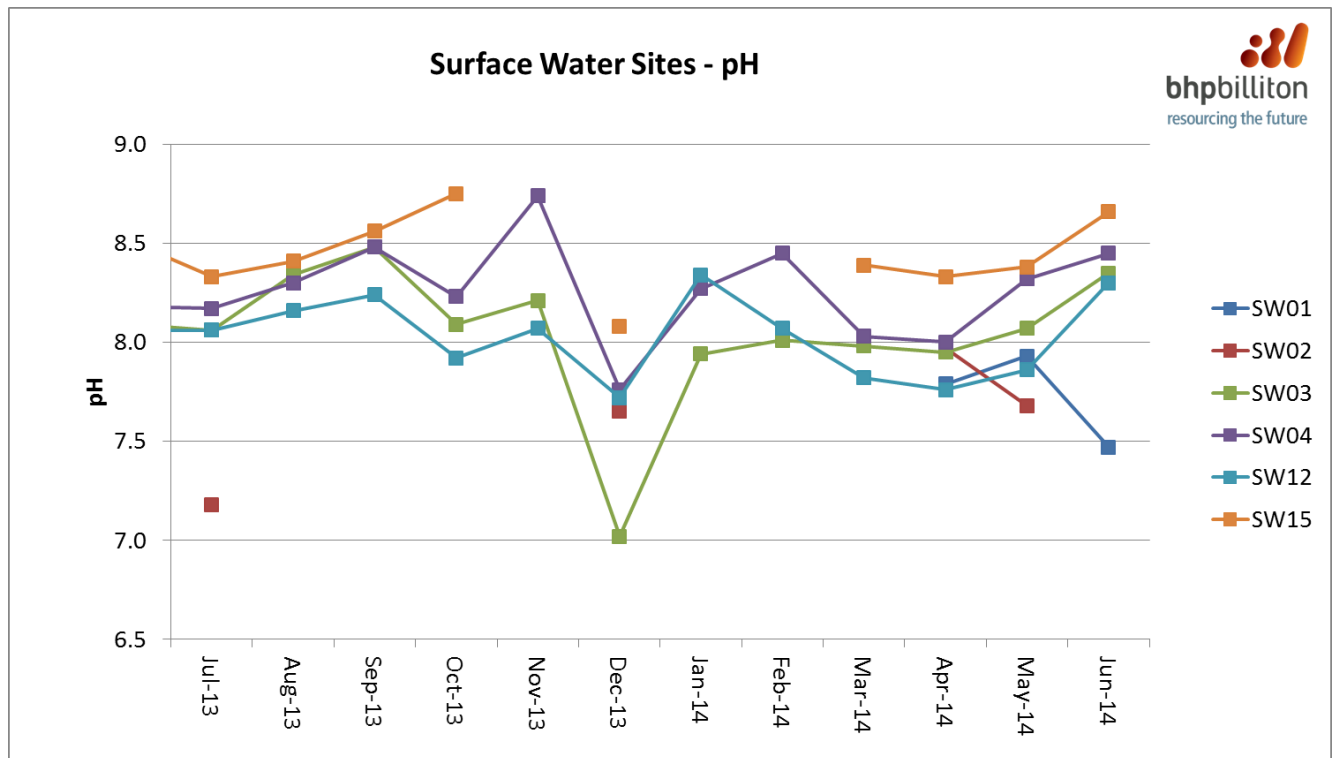
- No reportable elevated results were recorded during May or June.

Surface Water Data Capture Rates:

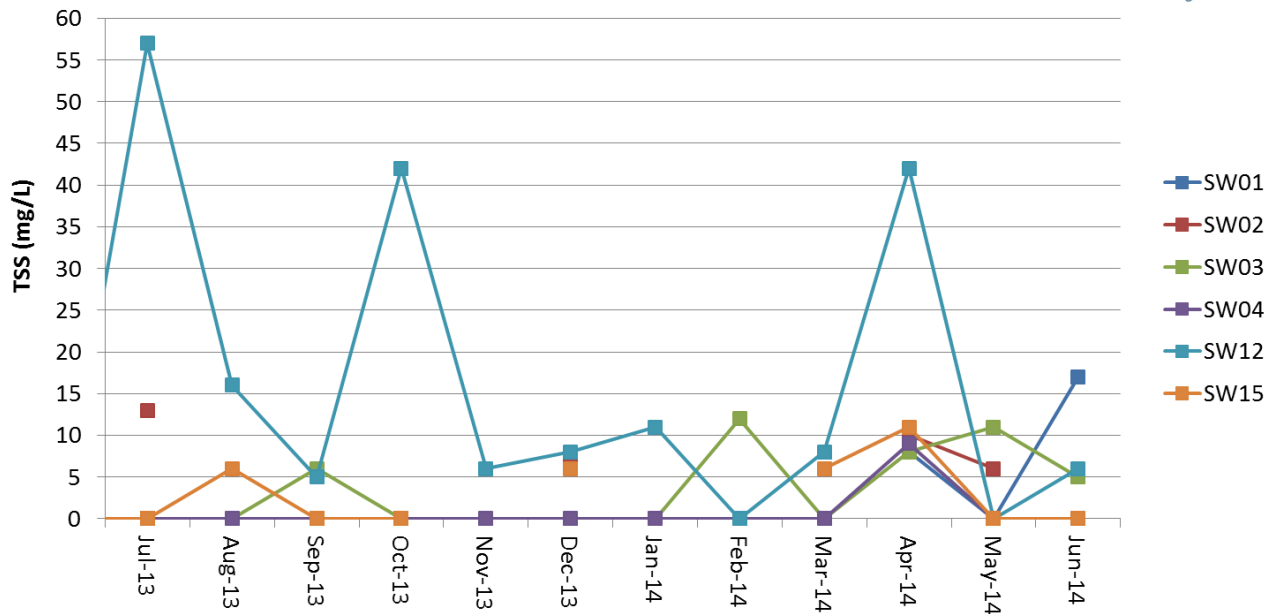
	Saddlers Creek			Quarry Creek	Ramrod Creek	Whites Creek
Site ID	SW01	SW02	SW03	SW04	SW12	SW15
May-14	100%	100%	100%	100%	100%	100%
Jun-14	100%	0%^	100%	100%	100%	100%

^ Watercourse was dry or too low to sample

Surface Water Parameters:



Surface Water Sites - TSS



6. Noise Data (May - Jun 2014)

Noise Criteria:

Impact Assessment Criteria

- The Proponent shall ensure that the noise generated by the Mt Arthur mine complex does not exceed the noise impact assessment criteria in Table 2 at any residence on privately-owned land or on more than 25 per cent of any privately-owned land, except where such exceedance is predicted in the EA. For these properties, the Proponent shall comply with the noise level predictions in the EA.

However, these noise limits do not apply if the Proponent has an agreement with the relevant owner/s of these residences/land to generate higher noise levels, and the Proponent has advised the Department in writing of the terms of this agreement.

Table 2: Noise Impact Assessment Criteria dB(A)

Location	Day (<i>L_{Aeq}</i> (15min))	Evening (<i>L_{Aeq}</i> (15min))	Night (<i>L_{Aeq}</i> (15min))	Night (<i>L_{A1}</i> (1 min))
A – Antiene Estate	37	40	38	45
B – Skelletar Stock Route, Thomas Mitchell Drive, Denman Road East	39	38	37	45
C – Racecourse Road	41	40	39	45
D – Denman Road North-west, Roxburgh Vineyard (north-east), Roxburgh Road	37	36	35	45
E – South Muswellbrook	39	39	39	45
F – Denman Road West, Roxburgh Vineyard (west)	37	36	35	45
G – East Antiene	41	40	39	45

Land Acquisition Criteria

- If the noise generated by the Mt Arthur mine complex exceeds the criteria in Table 3 at any residence on privately-owned land or on more than 25 per cent of any privately-owned land, the Proponent shall, upon receiving a written request for acquisition from the landowner, acquire the land in accordance with the procedures in conditions 7-8 of schedule 4.

Table 3: Land acquisition criteria dB(A) *L_{Aeq}* (15min)

Location	Day	Evening	Night
A – Antiene Estate	42	45	43
B – Skelletar Stock Route, Thomas Mitchell Drive, Denman Road East	44	43	42
C – Racecourse Road	46	45	44
D – Denman Road North-west, Roxburgh Vineyard (north-east), Roxburgh Road	42	41	40
E – South Muswellbrook	44	44	44
F – Denman Road West, Roxburgh Vineyard (west)	42	41	40
G – East Antiene	46	45	44

Definitions:

L_{Aeq} (15min) – The average noise energy during a 15 minute period.

L_{A1} (1min) – The noise level exceeded for 1% of 1 minute. This measurement is generally regarded as the maximum noise level during a monitoring period.

Noise Summary:

- Mt Arthur Coal has eight statutory attended noise monitoring locations.
- There were no reportable exceedances recorded in May or June.
- Statutory attended noise monitoring results for May and June for L_{Aeq} (15min) and L_{A1} (1min) are shown below.

Noise Data Capture Rates:

	NP04	NP07	NP10	NP12	NP13	NP14	NP15	NP16
May-14	100%	100%	100%	100%	100%	100%	100%	100%
Jun-14	100%	100%	100%	100%	100%	100%	100%	100%

L_{Aeq} (15min)	NP04	NP07	NP10	NP12	NP13	NP14	NP15	NP16
Representative residential assessment zone	A	C	E	G	N/A	D	D & F	B
Noise impact assessment criteria (intrusive criteria) (L_{Aeq} (15min))	38	39	39	39	N/A	35	35	37
Land acquisition criteria (L_{Aeq} (15min))	43	44	44	44	N/A	40	40	42
Predicted noise level for 2016 for each monitoring location [^]	38	37	38	39	N/A	34	35	38
26-27 May 2014	IA	38	33	IA	IA	<25	<25	<30
12-13 June 2014	<35	33	35	IA	IA	26	30	39**
L_{A1} (1min)	NP04	NP07	NP10	NP12	NP13	NP14	NP15	NP16
Representative residential assessment zone	A	C	E	G	N/A	D	D & F	B
Noise impact assessment criteria (L_{A1} (1min))	45	45	45	45	N/A	45	45	45
26-27 May 2014	IA	42	35	IA	IA	<25	<25	33
12-13 June 2014	35	40	41	IA	IA	32	32	42

[^] Modelling for 2016 is considered to be representative for FY14.

NM – Mt Arthur Coal's operations were audible but not measurable.

IA – Mt Arthur Coal's operations were inaudible.

N/A – Predicted noise levels were not applicable as monitored on land owned by Mt Arthur Coal.

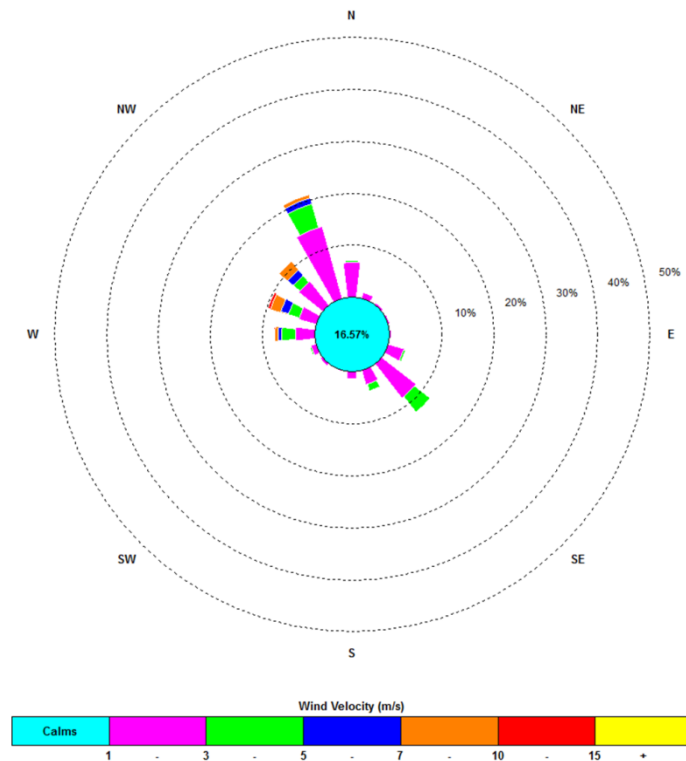
* Noise emission limits do not apply for winds greater than 3m/s (at a height of 10m), or temperature inversion conditions greater than or equal to 4°C/100m.

** Result is not greater than 2dB above limit and is therefore in compliance with criteria. Remeasure recorded <30 dB confirming that the elevated result was not sustained.

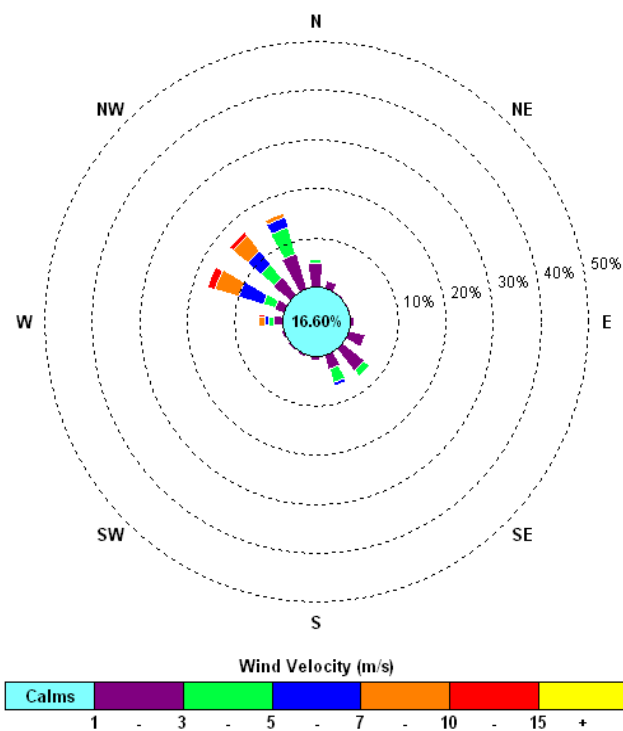
7. Weather Data (May - Jun 2014)

Monthly Windroses for Mt Arthur Coal Industrial Area Meteorological Station:

May 2014



June 2014



2014	Temperature 10m (°C)			Windspeed (m/s)			Sigma Theta			Solar Radiation (W/m ²)			Rainfall (mm)	No. of days rain >1mm
	Min	Average	Max	Min	Average	Max	Min	Average	Max	Min	Average	Max		
January	15.2	24.0	36.7	0.0	4.1	10.9	5.8	19.6	93.4	0.0	408.6	1687.1	8.4	1
February	13.6	22.6	36.3	0.0	3.7	13.0	5.9	17.8	95.0	0.0	339.1	1693.2	96.0	7
March	12.2	20.7	29.7	0.0	3.0	12.0	3.3	17.6	100.8	0.0	289.1	1543.8	129.0	8
April	6.8^	18.1^	32.9^	0.0	2.5	8.6	0.0	17.4	94.8	0.0	246.8	1585.9	92.8	7
May	4.5^	14.3^	24.7^	0.0	2.6	12.1	2.3	16.9	100.0	0.0	201.4	1169.5	13.8	3
June	4.2^	11.6^	19.5^	0.0	3.5	18.1	4.2	16.6	101.7	0.0	163.2	995.9	11.6	5

^ 10m temperature data was not available due to issues with the monitoring instruments and has been substituted with 2m temperature data.

Agenda Item 9 - Overview of Community Support (May - Jun 2014)

During May and June 2014, Mt Arthur Coal financially supported the following organisations and events:

- Educational partnership with Muswellbrook Race Club – seven employees have commenced studies through TAFE to upskill and increase their chances for career progression
- NSW Minerals Council's 2014 Sponsorship Program – three local high school students have been granted university scholarships that will support them through to 2017
- NSW Minerals Council's 2014 Health and Safety Conference held in the Hunter Valley

Mt Arthur Coal also provided in-kind support to help assist:

- Muswellbrook South Public School Breakfast Club
- Muswellbrook and Upper Hunter Eisteddfod
- Denman Horse Trials
- NSW Minerals Council's Voice for Mining Family Day at Hunter Stadium

Agenda Item 10 - Community Complaints Summary (May - Jun 2014)

Date and time	From	Issue	Lodgement type	Investigation and response to caller
6/05/2014 0:52	South Muswellbrook	Operational Noise	Community Response Line	Investigation revealed no unusual mining operations were occurring at the time. Results at the nearest real-time monitor indicated noise levels were within internal benchmarks. Caller was advised of investigation and monitoring results.
7/05/2014 8:45	Antiene	Blast Overpressure Noise	Phone Call	Investigation revealed weather conditions were suitable for blasting at the time. Monitoring results indicated overpressure noise and ground vibration levels were within regulatory criteria. Caller was advised of investigation and monitoring results.
8/05/2014 9:28	Roxburgh Road	Operational Noise	Community Response Line	Investigation revealed no unusual mining operations were occurring at the time. Results at the nearest real-time monitor indicated noise levels were within internal benchmarks. Caller was not called back regarding investigation and monitoring results.
8/05/2014 9:29	Other	Blast Vibration	Community Response Line	Investigation revealed weather conditions were suitable for blasting at the time. Results indicated overpressure noise and ground vibration levels were within regulatory criteria. Caller was advised of investigation and monitoring results.
8/05/2014 9:30	Other (Unknown)	Operational Noise	Email	Received from the NSW Environment Protection Authority on behalf of a resident. Investigation revealed no unusual mining operations were occurring at the time. Results at all real-time monitors indicated noise levels were within internal benchmarks, except at South Muswellbrook, however exceedances at this monitor were due to local noise sources. The Authority was advised of investigation and monitoring results.
12/05/2014 1:17	South Muswellbrook	Operational Noise	Community Response Line	Investigation revealed no unusual mining operations were occurring at the time. Results at the nearest real-time monitor indicated noise levels were within internal benchmarks. Caller was unable to be contacted to be advised of investigation and monitoring results.

Date and time	From	Issue	Lodgement type	Investigation and response to caller
12/05/2014 3:14	Roxburgh Road	Operational Noise	Community Response Line	Investigation revealed no unusual mining operations were occurring at the time. Results at the nearest real-time monitor indicated noise levels were within internal benchmarks. Caller was not called back regarding investigation and monitoring results.
16/05/2014 1:43	Roxburgh Road	Operational Noise	Community Response Line	Investigation revealed no unusual mining operations were occurring at the time. Results at the nearest real-time monitor indicated noise levels were within internal benchmarks. Caller was not called back regarding investigation and monitoring results.
18/05/2014 3:03	Roxburgh Road	Operational Noise	Community Response Line	Investigation revealed no unusual mining operations were occurring at the time. Results at the nearest real-time monitor indicated noise levels were within internal benchmarks. Caller was not called back regarding investigation and monitoring results.
19/05/2014 11:32	Denman Road	Blast Overpressure Noise	Community Response Line	Investigation revealed weather conditions were suitable for blasting at the time. Monitoring results indicated overpressure noise and ground vibration levels were within regulatory criteria. Caller was advised of investigation and monitoring results.
21/05/2014 23:55	Roxburgh Road	Operational Noise	Community Response Line	Investigation revealed no unusual mining operations were occurring at the time. Results at the nearest real-time monitor indicated noise levels were within internal benchmarks. Caller was not called back regarding investigation and monitoring results.
26/05/2014 10:20	Racecourse Road	Operational Noise	Phone Call	Investigation revealed no unusual mining operations were occurring at the time. Results at the nearest real-time monitor indicated noise levels were within internal benchmarks. Caller was advised of investigation and monitoring results.
2/06/2014 11:53	Racecourse Road	Blast Overpressure Noise	Community Response Line	Investigation revealed weather conditions were suitable for blasting at the time. Monitoring results indicated overpressure noise and ground vibration levels were within regulatory criteria. Caller was advised of investigation and monitoring results.
5/06/2014 2:10	Roxburgh Road	Operational Noise	Community Response Line	Investigation revealed no unusual mining operations were occurring at the time. Results at the nearest real-time monitor indicated noise levels were within internal benchmarks. Caller was not called back.
6/06/2014 23:55	Roxburgh Road	Lighting	Community Response Line	Investigation revealed location of three potential nuisance lights, which were all redirected or relocated so that the lights were no longer visible. Caller was unable to be contacted to be advised of investigation results and action taken.
7/06/2014 0:01	Roxburgh Road	Lighting	Email	Received from the NSW Environment Protection Authority on behalf of a resident. Investigation revealed location of three potential nuisance lights, which were all redirected or relocated so that the lights were no longer visible. The Authority was advised of investigation and monitoring results.

Date and time	From	Issue	Lodgement type	Investigation and response to caller
7/06/2014 22:33	Roxburgh Road	Operational Noise	Community Response Line	Investigation revealed no unusual mining operations were occurring at the time. Results at the nearest real-time monitor indicated noise levels were within internal benchmarks. Caller was not called back.
8/06/2014 0:41	Roxburgh Road	Lighting	Community Response Line	Investigation revealed location of nuisance light, which was lowered and redirected so that the light was no longer visible. Caller was advised of investigation results and action taken.
9/06/2014 23:24	Roxburgh Road	Operational Noise	Community Response Line	Investigation revealed no unusual mining operations were occurring at the time. Results at the nearest real-time monitor indicated noise levels were within internal benchmarks. Caller was not called back.
10/06/2014 23:23	Roxburgh Road	Operational Noise	Community Response Line	Investigation revealed no unusual mining operations were occurring at the time. Results at the nearest real-time monitor indicated noise levels were within internal benchmarks. Caller was not called back.
10/06/2014 23:27	Roxburgh Road	Operational Noise	Email	Received from the NSW Environment Protection Authority on behalf of a resident. Investigation revealed no unusual mining operations were occurring at the time. Results at the nearest real-time monitor indicated noise levels were within internal benchmarks. The Authority was advised of investigation and monitoring results.
11/06/2014 23:00	Roxburgh Road	Operational Noise	Email	Received from the NSW Environment Protection Authority on behalf of a resident. Investigation revealed no unusual mining operations were occurring at the time. Results at the nearest real-time monitor indicated noise levels were within internal benchmarks. The Authority was advised of investigation and monitoring results.
12/06/2014 0:23	Roxburgh Road	Operational Noise	Community Response Line	Investigation revealed no unusual mining operations were occurring at the time. Results at the nearest real-time monitor indicated noise levels were within internal benchmarks. Caller was not called back.
13/06/2014 7:12	Roxburgh Road	Lighting	Phone Call	Received from the NSW Department of Planning and Environment on behalf of a resident. Investigation did not identify any potential nuisance lights. The Department was advised of investigation results.
13/06/2014 7:12	Roxburgh Road	Lighting	Community Response Line	Investigation did not identify any potential nuisance lights. Caller was advised of investigation results.
17/06/2014 23:09	Roxburgh Road	Operational Noise	Community Response Line	Investigation revealed no unusual mining operations were occurring at the time. Results at the nearest real-time monitor indicated noise levels were within internal benchmarks. Caller was not called back.
18/06/2014 22:34	Roxburgh Road	Operational Noise	Community Response Line	Investigation revealed no unusual mining operations were occurring at the time. Results at the nearest real-time monitor indicated noise levels were within internal benchmarks. Caller was not called back.

Date and time	From	Issue	Lodgement type	Investigation and response to caller
22/06/2014 22:59	Roxburgh Road	Operational Noise	Community Response Line	Investigation revealed no unusual mining operations were occurring at the time. Results at the nearest real-time monitor indicated noise levels were within internal benchmarks. Caller was not called back.
22/06/2014 23:13	Roxburgh Road	Operational Noise	Community Response Line	Investigation revealed no unusual mining operations were occurring at the time. Results at the nearest real-time monitor indicated noise levels were within internal benchmarks. Caller was not called back.
24/06/2014 18:42	Roxburgh Road	Lighting	Community Response Line	Investigation revealed location of lights, which were redirected or turned off. Caller was advised of investigation results and action taken.
26/06/2014 11:15	Denman Road	Blasting Dust	Community Response Line	Investigation revealed weather conditions were suitable for blasting at the time. Results at the nearest monitor indicated dust levels were not elevated at the time, and the 24 hour average remained within regulatory criteria. Caller was advised of investigation and monitoring results.

Agenda Item 11 - General business

Call for topics to discuss at next meeting.

Agenda Item 12- Next meeting date

Next Mt Arthur Coal CCC meeting:

- When: Wednesday 8 October 2014
- Time: 2pm
- Where: Mt Arthur Coal

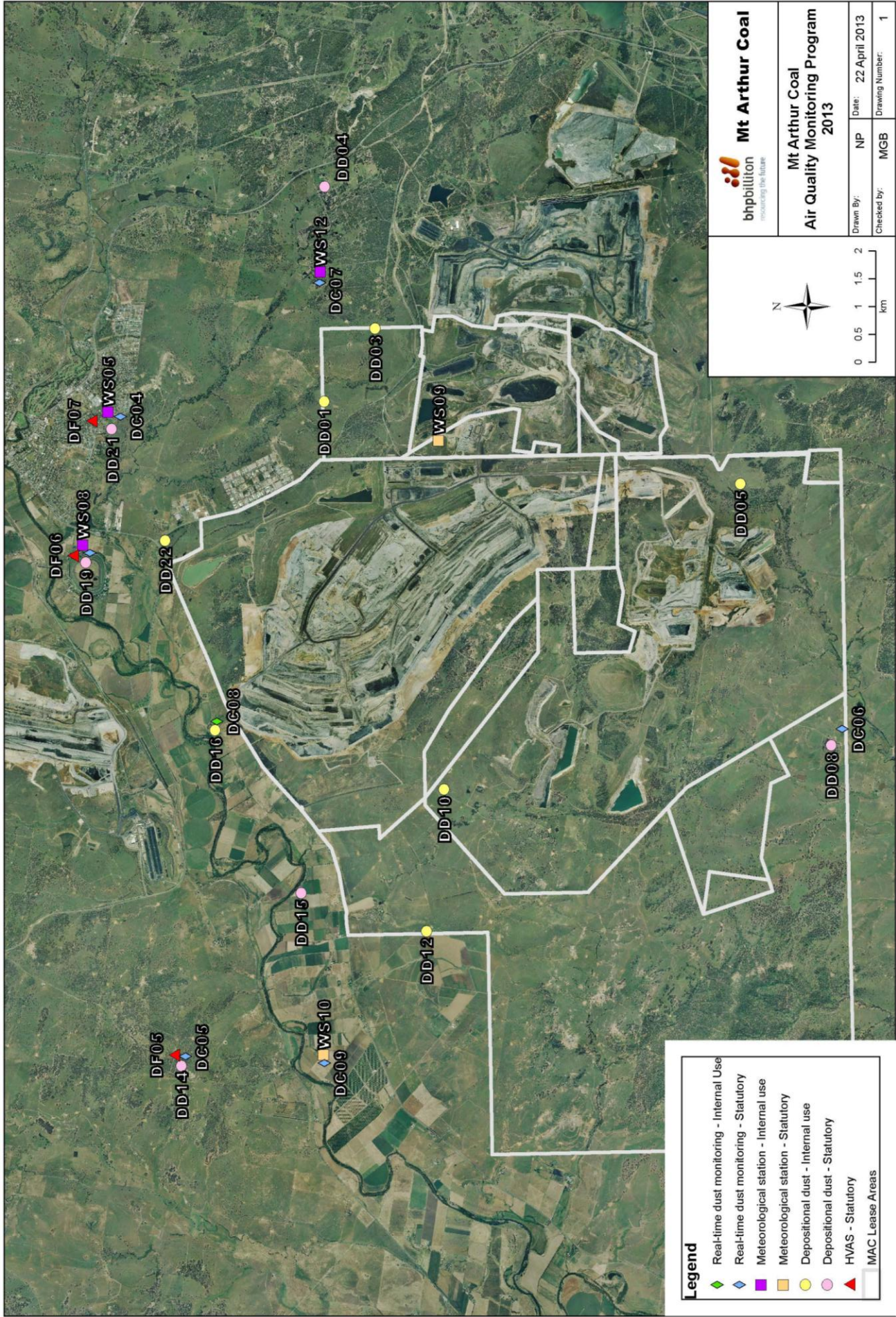
Agenda Item 13- Meeting close

Appendix 1: Monitoring Locations

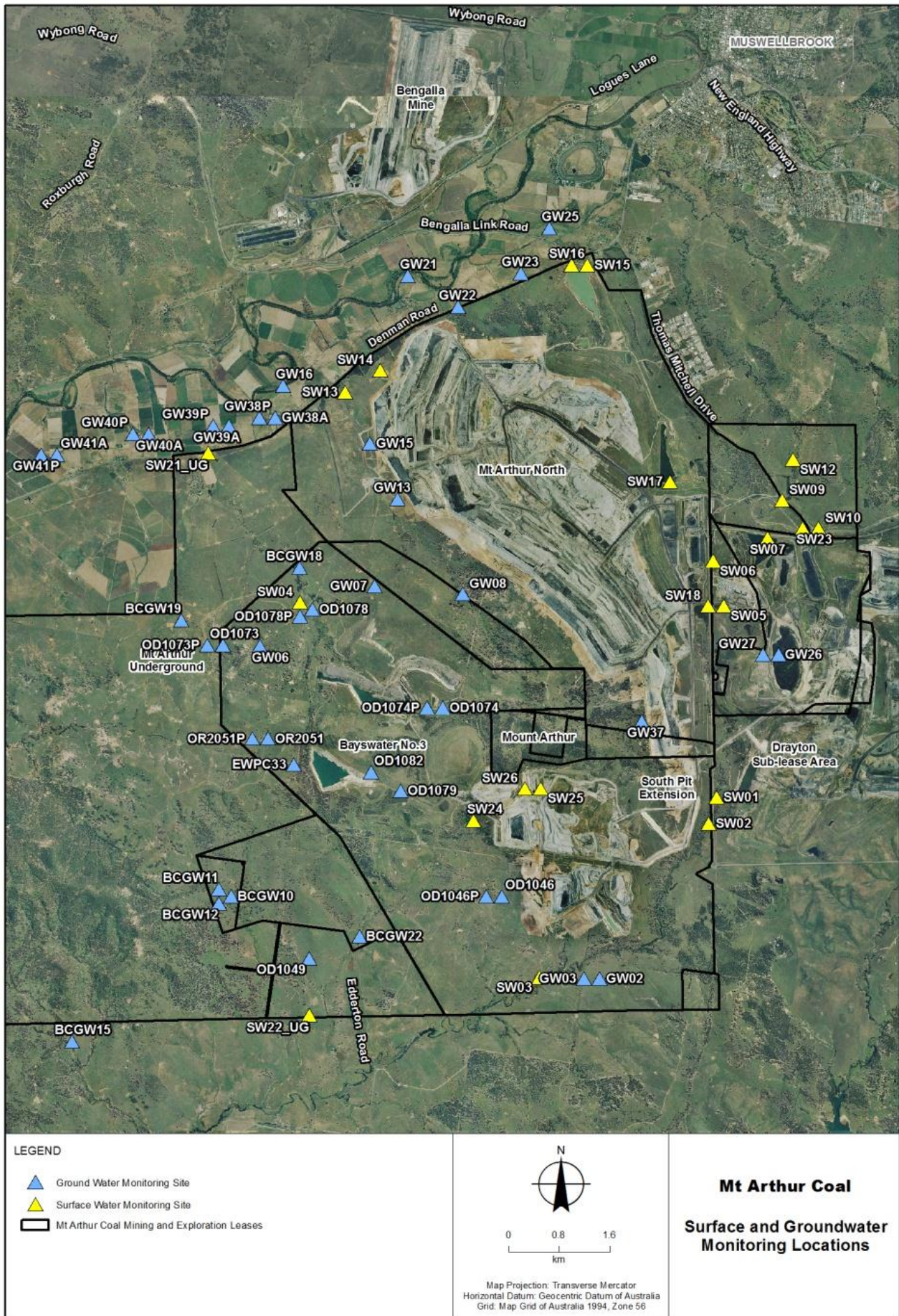
Blast Monitoring:



Air Quality Monitoring:



Water Monitoring:



Noise Monitoring:

