



Fact Sheet

Saraji East Mining Lease Project

BHP Billiton Mitsubishi Alliance (BMA) is Australia's largest exporter of seaborne metallurgical coal, with a proud history of operating in the Bowen Basin.

BMA's operations provide significant benefits to local communities, the broader Central Queensland region and the State economy as a whole.

The Saraji East Mining Lease has been identified as containing a quality metallurgical coal resource and is key to BMA's future production plans.

Project Overview

BMA is seeking environmental approvals for the proposed **Saraji East Mining Lease Project (the Project)** which, if approved, would be an underground coal mine adjacent to the existing Saraji open-cut mine operated by BMA.

The proposed Project is in the Isaac Regional Council Local Government Area, approximately 30 kilometres north of Dysart and approximately 167 kilometres south-west of Mackay in Queensland.

The Project includes:

- a new underground coal mine and infrastructure area
- a new coal handling and processing plant and stockpile pads
- a conveyor system to deliver coal from the underground portals to the coal handling and processing plant, and product coal to the rail loading facilities
- a new 4.4 kilometre rail spur and balloon loop and signalling system connected to the existing rail system
- a new powerline extending from the Dysart sub-station
- relocating an existing water pipeline and powerline into a new infrastructure and transport corridor to the east of the current alignments
- new accommodation facilities to support the construction and operational stages.

BMA is preparing a draft Environmental Impact Statement (EIS) in accordance with Federal and State Government legislation (refer to information overleaf). Subject to study outcomes and environmental approvals, construction may commence during the 2020s and is anticipated to take approximately two years.

Project Benefits

Community

BMA aims to contribute to the liveability of the Bowen Basin by providing opportunities for the development and sustainability of safe, healthy, skilled and vibrant communities. The Project will benefit Dysart, the Bowen Basin and Queensland, by contributing significantly to the Queensland economy and creating employment opportunities.

Employment

The Project is anticipated to employ up to 1,000 people during construction and approximately 500 people during operations.



~1000
CONSTRUCTION



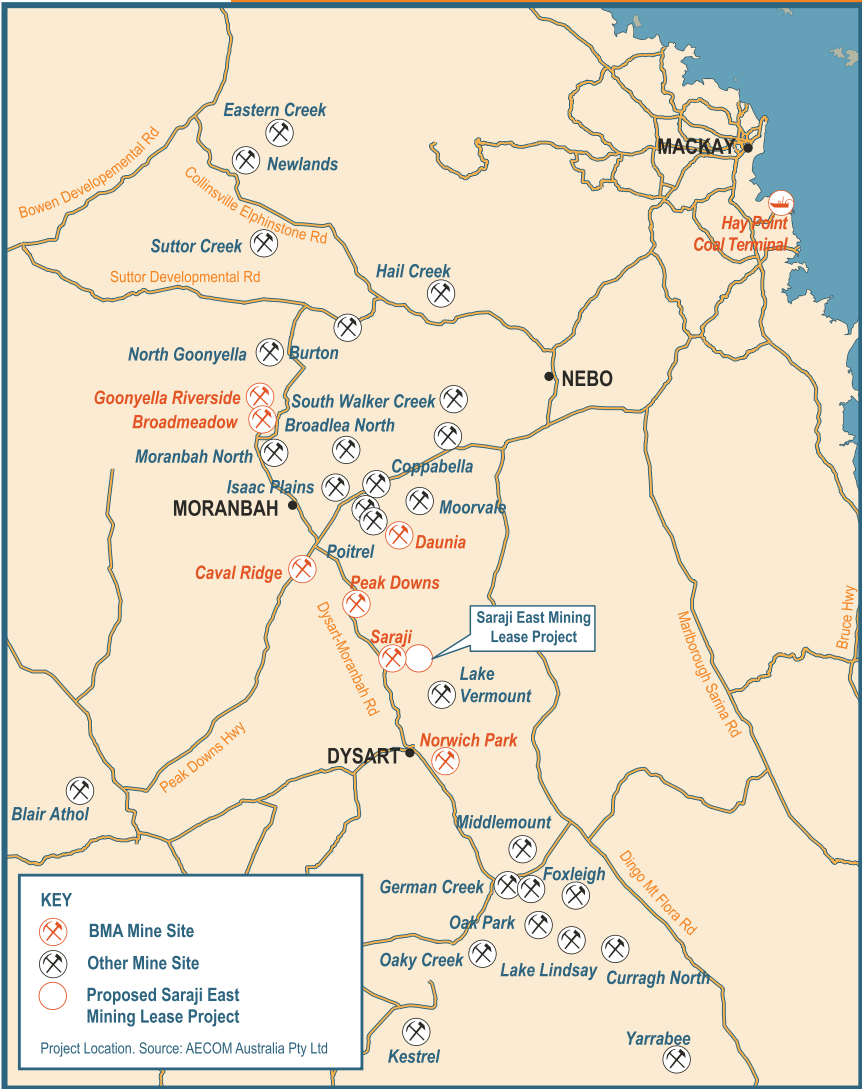
~500
OPERATIONS

Demand And Investment

The Project will produce metallurgical coal for export, generate jobs and result in increased investment and royalties for Queensland.



Key Facts	
Location	Adjacent to existing Saraji open cut coal mine, 30 kilometres north of Dysart, Queensland.
Local Government Area	Isaac Regional Council.
Description	Greenfield underground coal mine.
Product	Metallurgical coal (coking coal) – used for steel-making.
Production	Up to eight million tonnes per year (Mt/yr) over a 20-year lifespan.
Export	BMA's Hay Point Coal Terminal and/or Abbot Point Coal Terminal for distribution to international markets using existing approved rail capacity.
Project Status	BMA is currently undertaking an EIS process in accordance with the <i>Environmental Protection Act, 1994 (EP Act)</i> and <i>Environmental Protection and Biodiversity Conservation Act 1999 (EPBC Act)</i> .

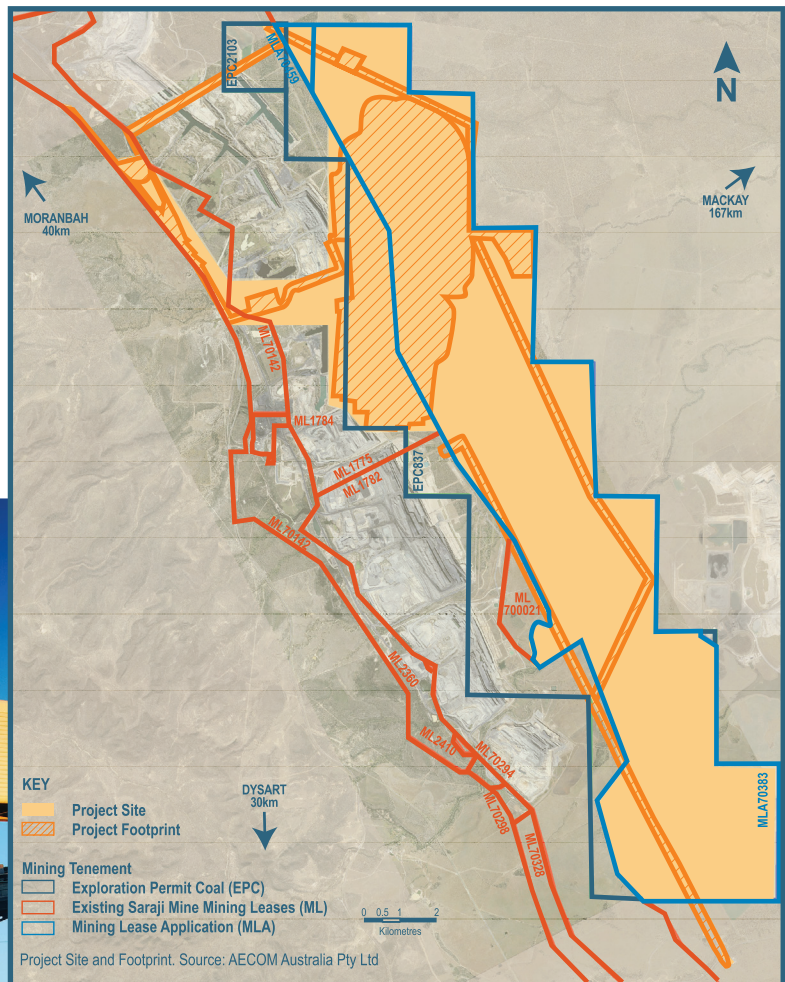


Environmental Impact Statement Process



BMA is undertaking the EIS process to gain a deeper understanding of the environmental, social, economic and cultural heritage implications of the proposed Project and to help maximise the benefits from its operations. Some of the key areas of assessment include:

- air quality
- flora and fauna
- resources (land and water)
- waste management
- visual amenity
- noise and vibration.



Community Involvement

Community engagement and feedback is an important step in the environmental planning process.

Communities and other stakeholders will have the opportunity to comment on the draft EIS, when it becomes available, by making a formal, written submission.

BMA will work with government agencies, landholders, traditional owners, key stakeholders and communities and other nearby projects as part of the environmental approvals process to achieve mutually beneficial outcomes and relationships.

BMA is committed to minimising impacts and maximising benefits to local communities and stakeholders through the development of this important Project.

Further information will be provided to stakeholders and the local community as the Project progresses and the draft EIS is released.

Find Out More

Stakeholder input and feedback will be considered by BMA during the development of the EIS. To find out more, provide feedback on the Project or to speak with a Project representative:

- **Free call the Project information line:** 1800 078 797
- **Email:** metcoalinfo@bhpbilliton.com
- **Visit:** www.ehp.qld.gov.au/management/impact-assessment/eis-processes/saraji-east-mining-lease-project.html
- **Write:** BHP Billiton Mitsubishi Alliance, Reply Paid 1430, Brisbane QLD 4001