

ATTACHMENTS

ENVIRONMENTAL AUTHORITY APPLICATION
MLA 70421 WITH SURFACE AREA “RIGHTS” (Partial)
AND ML 1763
“RED HILL PROJECT”

ATTACHMENT 'A'
 ENVIRONMENTAL AUTHORITY APPLICATION
 FOR
 MLA 70421 WITH SURFACE RIGHTS (Partial) AND ML 1763
 "RED HILL PROJECT"

LIST OF ALL JOINT APPLICANTS

COMPANY	ABN	% INTEREST
BHP Billiton Group of Companies:		
BHP Coal Pty Ltd (principal applicant)	83 010 595 721	40.75
Umal Consolidated Pty Ltd	29 000 767 386	0.75
BHP Queensland Coal Investments Pty Ltd	56 098 876 825	8.50
sub total		50.00
Mitsubishi Group of Companies:		
Mitsubishi Development Pty Ltd	17 009 779 873	15.53
QCT Investment Pty Ltd	45 010 487 831	12.00
QCT Mining Pty Ltd	47 010 487 840	15.78
QCT Resources Pty Limited	74 010 808 705	6.69
sub total		50.00
TOTAL		100.00

ATTACHMENT 'B'
ENVIRONMENTAL AUTHORITY APPLICATION
FOR
MLA 70421 WITH SURFACE RIGHTS (Partial) AND ML 1763
"RED HILL PROJECT"

COMPONENTS

This Environmental Authority Application relates to a proposed new underground Red Hill Mine (RHM) that has been assessed in the Red Hill Mining Lease EIS¹ process.

Key aspects of the proposed RHM include:

- An underground footprint of 3,600ha
- Potential production capacity of 14mtpa of high quality hard coking coal over a period of 20-25 years
- Underground mining to target the Goonyella Middle Seam (GMS)
- Two sets of longwall panels
- A network of bores and associated surface infrastructure for mine gas pre-drainage and management of goaf methane drainage to enable the safe extraction of coal
- A ventilation system for the underground workings
- A bridge across the Isaac River to provide a crossing point for mine-related infrastructure including water pipelines and power supply
- A new accommodation village with capacity for up to 3,000 workers

There will be mining activities, assessed in the Red Hill Mining Lease, on both ML 1763 and ML 70421 (once granted) which are not the subject of this Environmental Authority Application ("Additional Activities"). These Additional Activities relate to a separate mining operation. The Additional Activities will be operated by an independent workforce and managed by an independent management team. These Additional Activities will be the subject of the existing Environmental Authority EPML00853413.

Reference:

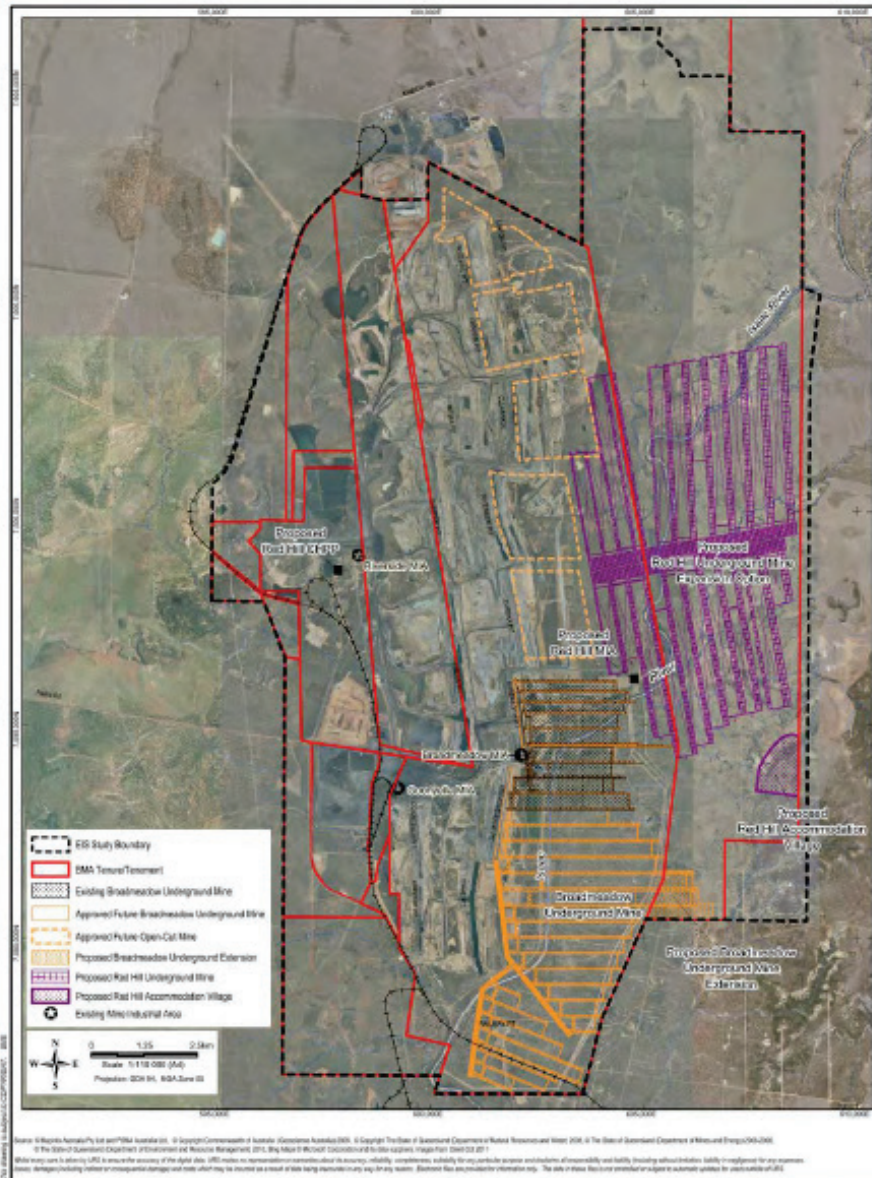
¹ – Red Hill Mining Lease Project

Coordinator-General's evaluation report on the Environmental Impact Statement (EIS), June 2015. See Attachment F for relevant information in relation to the EIS.

ATTACHMENT 'C'

ENVIRONMENTAL AUTHORITY APPLICATION
FOR
MLA 70421 WITH SURFACE RIGHTS (Partial) AND ML 1763
"RED HILL PROJECT"

The proposed locations of the key aspects of the new RHM, identified in Attachment B, are shown (shaded in purple) on the following map.



BMA
BHP Billiton Mitsubishi Alliance

RED HILL MINING LEASE PROJECT

PROJECT COMPONENTS

URS | COORDINATOR-GENERAL'S EVALUATION REPORT | Figure 2.2
File No: d3827573-g-2294.war | Drawn: VH | Approved: CT | Date: 13-03-2015 | Rev: A | A4

Figure 2.2 Project components

Reference:

- 1 – Red Hill Mining Lease Project, Coordinator-General's evaluation report on the Environmental Impact Statement, June 2015

ATTACHMENT 'D'
ENVIRONMENTAL AUTHORITY APPLICATION
FOR
MLA 70421 WITH SURFACE RIGHTS (Partial) AND ML 1763
"RED HILL PROJECT"

LANDOWNER DETAILS

Lot No	Plan No	Land Type	Owner / Holder	SA on MLA
Mining Lease Application 70421				
3	SP199176	Freehold	BHP Coal Pty Ltd & Others (CQCA JV)	Nil SA
8	RP903902	Freehold	BHP Coal Pty Ltd & Others (CQCA JV)	Nil SA
13	RP852571	Freehold	Peabody (Bowen) Pty Ltd	Nil SA
41	SP235904	Freehold	Peabody (Bowen) Pty Ltd	Nil SA
NA	NA	Mabbin Road (Reserve Land)	Isaac Regional Council	Nil SA
// // // // //				
3	GV54	Freehold	Williams, A.G.H.	SA1
4	SP174465	Term Lease 0/212095	Williams, A.G.H.	SA1
18	SP208194	Pastoral Holding 0/221638	Williams, A.G.H.	SA1
171	SP237593	Freehold 'Riverside'	Williams, A.G.H.	SA1
172	SP237593	Freehold	Queensland Electricity Corporation	SA1
NA	NA	Red Hill Road (Reserve Land)	Isaac Regional Council	SA1
NA	NA	Unnamed Roads (Reserve land)	Isaac Regional Council	SA1
NA	NA	Isaac River (USL)	State	SA1
// // // // //				
Mining Lease 1763 (Goonyella)				
16	SP235299	Freehold	BHP Coal Pty Ltd & Others (CQCA JV)	SA2&9

SA means: Surface Area on Mining Lease

ATTACHMENT 'E'
ENVIRONMENTAL AUTHORITY APPLICATION
FOR
MLA 70421 WITH SURFACE RIGHTS (Partial) AND ML 1763
"RED HILL PROJECT"

Application Form Questions 11, 12, 13 and 14

Assessment of Environmental Impact as required by section 124 (1) (l) of the *Environmental Protection Act 1994* has been addressed by the Red Hill Mining Lease Project Environmental Impact Statement (EIS). The EIS was approved by the Coordinator General as part of the co-ordinated process under the *State Development and Public Works Organisation Act 1971*.

The complete Red Hill Mining Lease Project EIS is publically available on the Queensland Government Department of State Development website and the BHP Billiton website. The addresses are as follows:

<http://www.statedevelopment.qld.gov.au/assessments-and-approvals/red-hill-mining-lease-project.html>

<http://www.bhpbilliton.com/home/society/regulatory/Pages/default.aspx>

The EIS comprehensively addresses the impact assessment for items (A) to (E) as required by section 124 (1) (l) of the *Environmental Protection Act 1994* for the EA application for the Red Hill Project.

Environmental Offsets are addressed in the EIS and conditioned in the Coordinator-General's report as part of the stated conditions for the draft EA for the Red Hill Mine Project.

ATTACHMENT 'F'

ENVIRONMENTAL AUTHORITY APPLICATION
FOR
MLA 70421 WITH SURFACE RIGHTS (Partial)
"RED HILL PROJECT"

APPOINTMENT OF PRINCIPAL APPLICANT

We the undersigned officers for BM Alliance Coal Operations Pty Ltd ("BMA"), under Power of Attorney No. 707957220, for the joint applicants BHP Coal Pty Ltd, Umal Consolidated Pty Ltd, BHP Queensland Coal Investments Pty Ltd, Mitsubishi Development Pty Ltd, QCT Investment Pty Ltd, QCT Mining Pty Ltd and QCT Resources Pty Ltd hereby appoint BHP Coal Pty Ltd as the principal Applicant for this application.

BM ALLIANCE COAL OPERATIONS PTY LTD as manager and agent on behalf of the Central Queensland Coal Associates Joint Venture participants, with authority to bind each of the participants in proportion to their respective participating interest in the Joint Venture.

SIGNED by BM ALLIANCE COAL OPERATIONS PTY LTD (ABN 67 096 412 752) as the duly constituted attorney of BHP Coal Pty Ltd (ABN 83 010 595 721), Umal Consolidated Pty Ltd (ABN 29 000 767 386), BHP Queensland Coal Investments Pty Ltd (ABN 56 098 876 825), Mitsubishi Development Pty Ltd (ABN 17 009 779 873), QCT Investment Pty Ltd (ABN 45 010 487 831), QCT Mining Pty Ltd (ABN 47 010 487 840) and QCT Resources Pty Limited (ABN 74 010 808 705) under registered power of attorney no. 707957220. BM Alliance Coal Operations Pty Ltd declares that it has not received any notice of revocation of its power of attorney.

SIGNED by BM ALLIANCE COAL OPERATIONS PTY LTD in accordance with section 127(1) of the Corporations Act 2001 (Cwth) by authority of its directors:


.....
Director Name: JOBERHOLZER


.....
Director / Secretary Name: JILL BUCKLE