



# BHP Billiton Petroleum

## Barclays CEO Energy and Power Conference

J. Michael Yeager  
Chief Executive – Petroleum  
September 10, 2009





# Disclaimer

The views expressed in this presentation are based on information derived from publicly available sources that has not been independently verified. No representation, warranty or undertaking, express or implied, is made or given as to the fairness, accuracy, completeness or reliability of that information. This presentation should not be relied upon as a recommendation or forecast by BHP Billiton. Any prospective participant is responsible for making its own credit analysis and its own independent assessment.

All estimates and projections in this presentations are illustrative only and are based on the assumptions described herein. Our actual results may be materially affected by changes in economic or other circumstances which cannot be foreseen. Nothing in this presentation is, or should be relied on as, a promise or representation either as to future results or events or as to the reasonableness of any assumption or view expressly or impliedly contained herein.

## Forward Looking Statements

This presentation includes forward-looking statements within the meaning of the U.S. Securities Litigation Reform Act of 1995 regarding future events and the future financial performance of BHP Billiton. These forward-looking statements are not guarantees or predictions of future performance, and involve known and unknown risks, uncertainties and other factors, many of which are beyond our control, and which may cause actual results to differ materially from those expressed in the statements contained in this presentation. For more detail on those risks, you should refer to the sections of our annual report on Form 20-F for the year ended 30 June 2008 entitled “Risk factors”, “Forward looking statements” and “Operating and financial review and prospects” filed with the U.S. Securities and Exchange Commission.

## No Offer of Securities

Nothing in this presentation should be construed as either an offer to sell or a solicitation of an offer to buy or sell BHP Billiton securities in any jurisdiction.

## Non-GAAP Financial Information

BHP Billiton results are reported under International Financial Reporting Standards (IFRS). References to Underlying EBIT and EBITDA exclude net finance costs and taxation for jointly controlled entities, and exceptional items. A reconciliation to statutory EBIT is contained within the profit announcement, available at our website [www.bhpbilliton.com](http://www.bhpbilliton.com).



# Agenda

- **BHP Billiton Overview**
- 2009 Petroleum Results
- Project Delivery
- Status of Discoveries
- Growth Options



# Diversified Resource Company



## Steel Making Materials

- Iron Ore
- Metallurgical Coal
- Manganese
- Energy Coal

## Non-Ferrous Products

- Copper
- Aluminium
- Nickel
- Diamonds
- Uranium

## Petroleum

- Oil
- Natural Gas
- LNG
- NGL



# BHP Billiton Financial Highlights

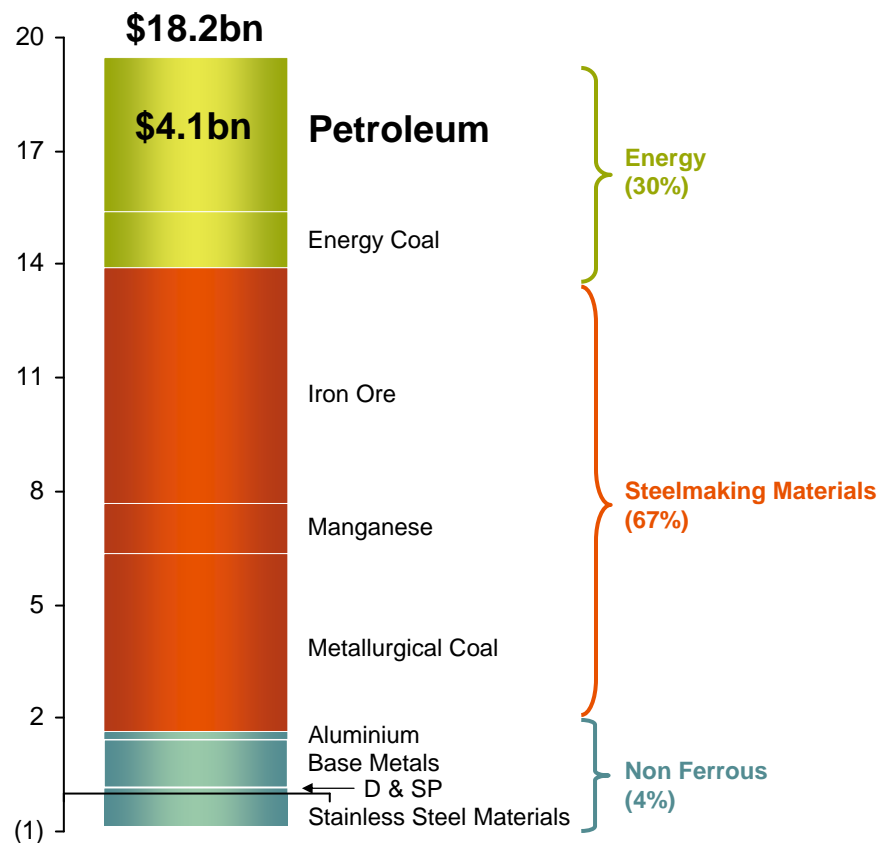


Year Ended June (US\$m)	2009	2008	% Change
Revenue	50,211	59,473	(15.6)
Capital Spend	9,492	7,558	25.6
Underlying EBIT	18,214	24,282	(25.0)
Attributable profit (excluding exceptionals)	10,722	15,368	(30.2)
Net operating cash flow	18,863	17,817	5.9

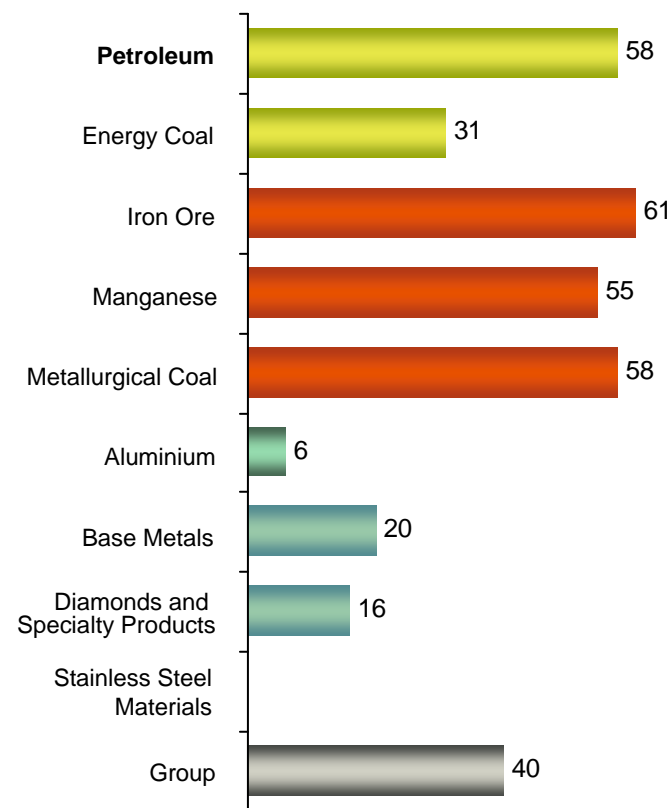


# BHP Billiton Portfolio Performance

**Underlying EBIT**  
(FY2009, US\$bn)



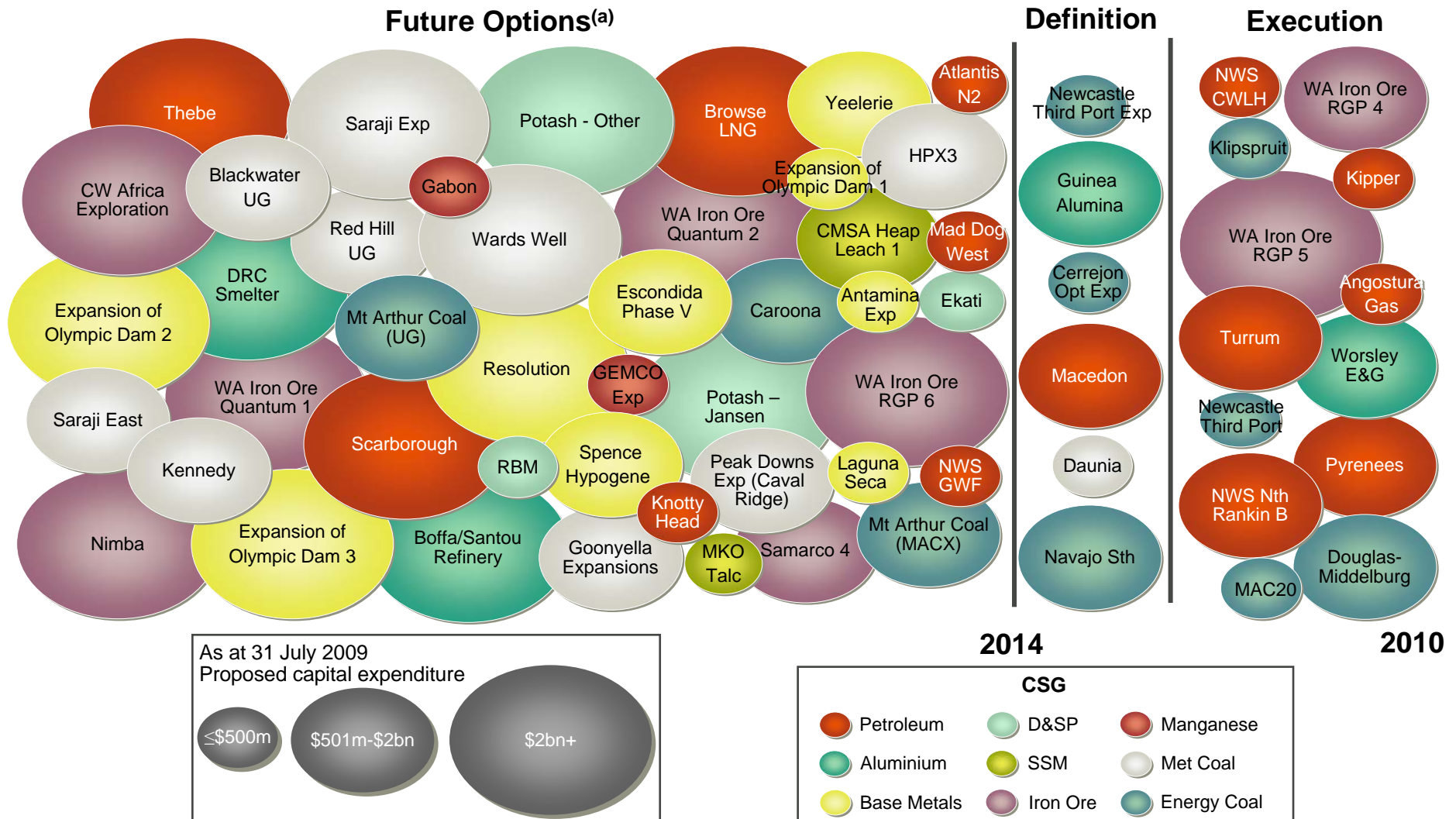
**Underlying EBIT Margin<sup>(a)</sup>**  
(FY2009)



(a) EBIT Margin excludes third party trading activities.



# Petroleum is a Major Part of Project Pipeline



(a) Placement of Future Options not indicative of Project Schedule.



# Commitment. Delivered.

- BHP Billiton Overview
- **2009 Petroleum Results**
- Project Delivery
- Status of Discoveries
- Growth Options



# Unique Strategy & Advantages

## Core Strategy

- Pursue large, upstream assets with multiple options – that we operate
- Target growth opportunities that are material to BHP Billiton
- Explore worldwide in a balance of proven plays and frontier areas
- Functional organizational model achieves top quartile performance

## Competitive Advantages

- Able to compete technically with super majors in chosen locations
- Industry leading geoscience imaging in deepwater subsalt
- Industry competitive deepwater drilling and project development
- Balance sheet strength of a super major, with the energy of a start-up
- Trusted and dynamic partner



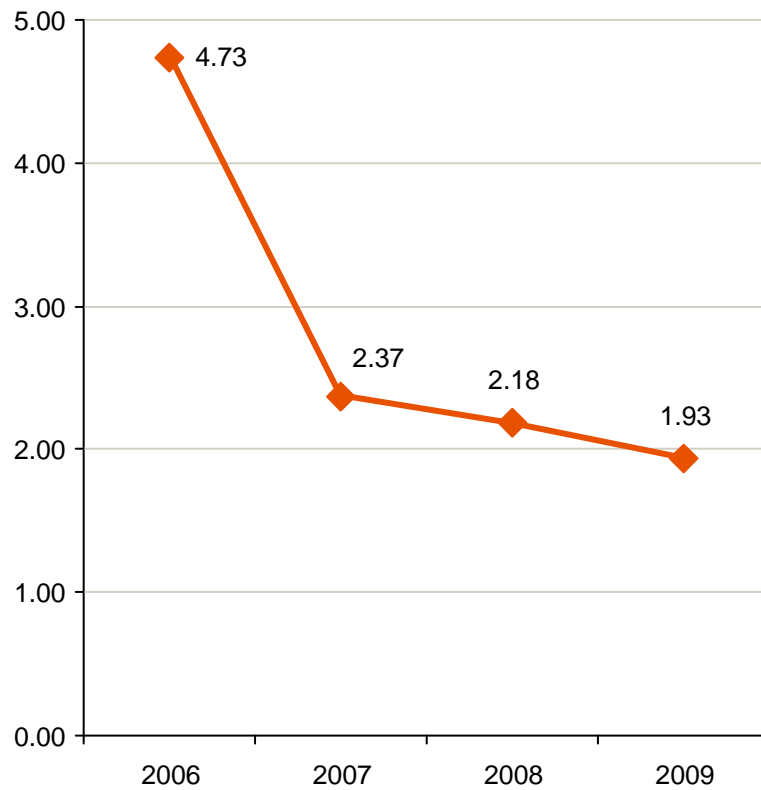
# Global Operational Focus



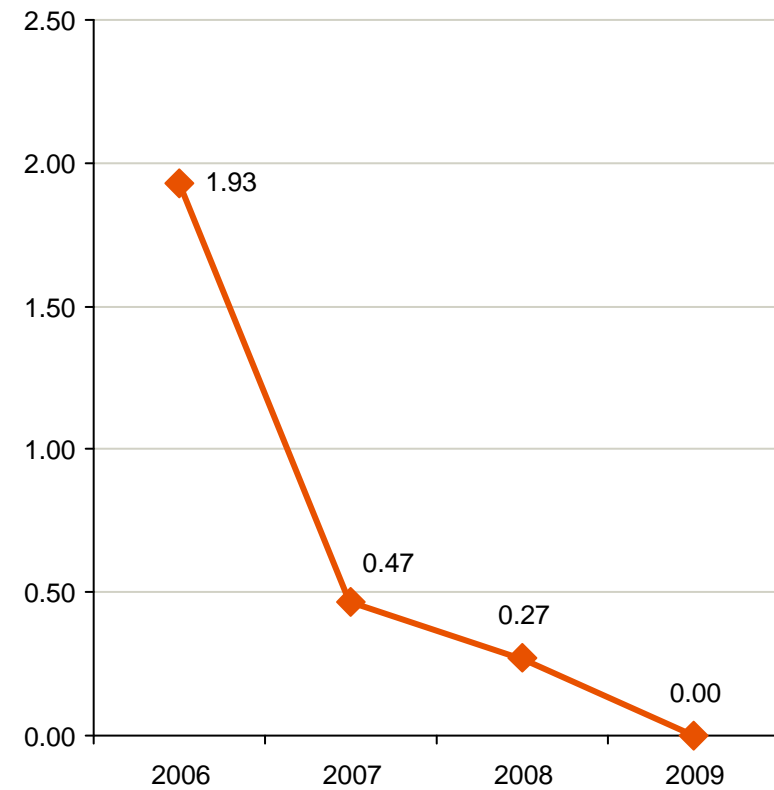


# Safety

## Total Recordable Incident Frequency Rate



## Lost Time Incident Frequency Rate

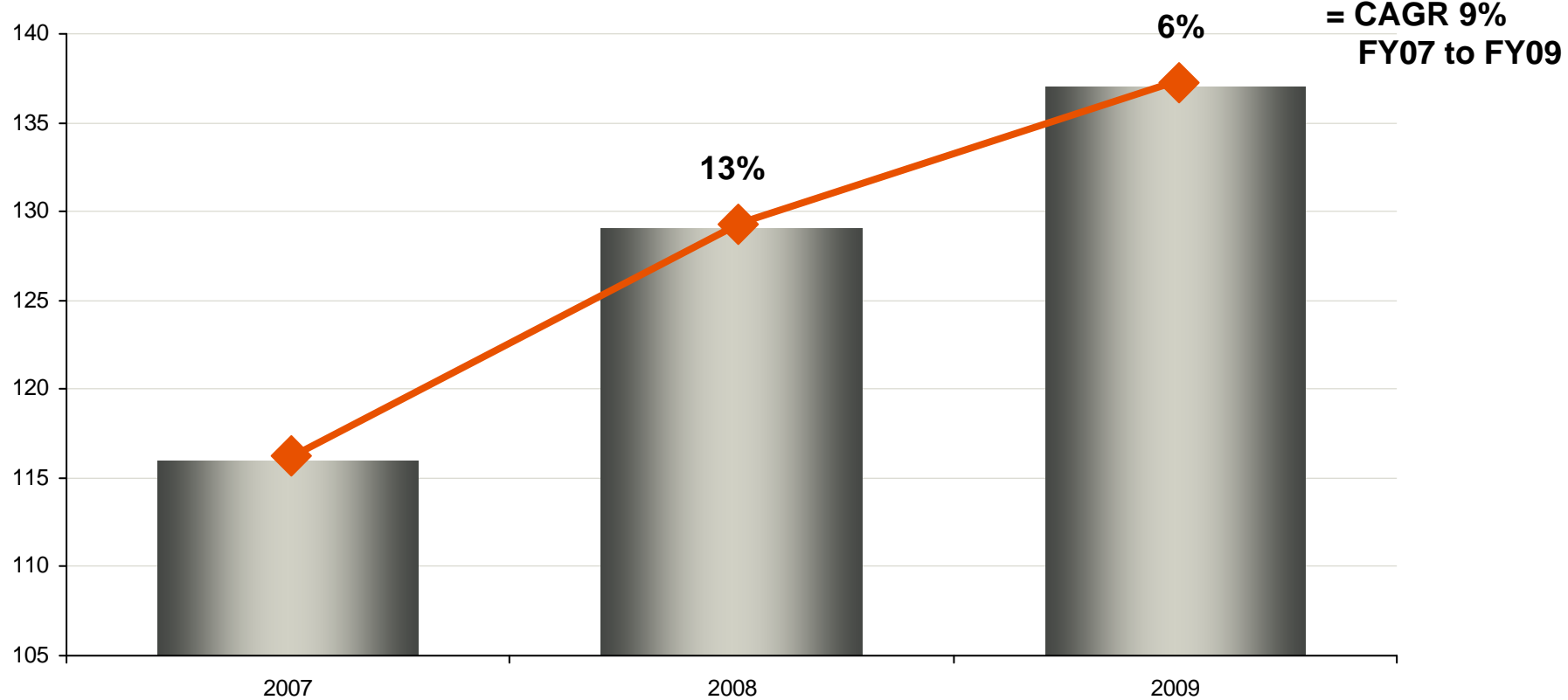


\* OGP Safety Performance Indicators Report No 419, May, 2009



# Volumes

## Production (MMboe)





# Operating Efficiency

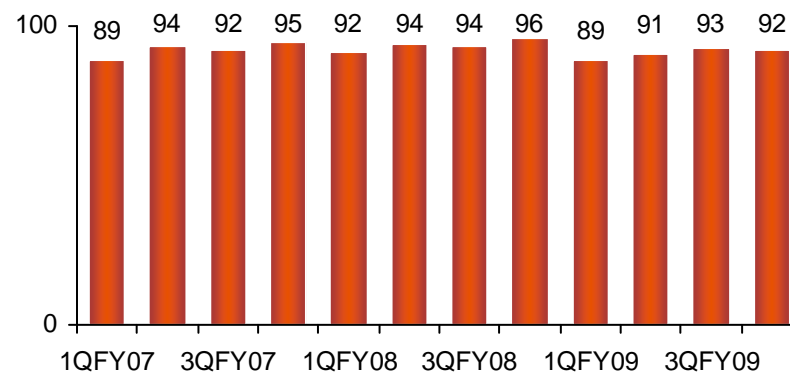
**100,100,100**

- Base production well managed
  - 91.3% uptime
  - FY09 impacted by hurricanes
- Production averaged 376KBoe/d

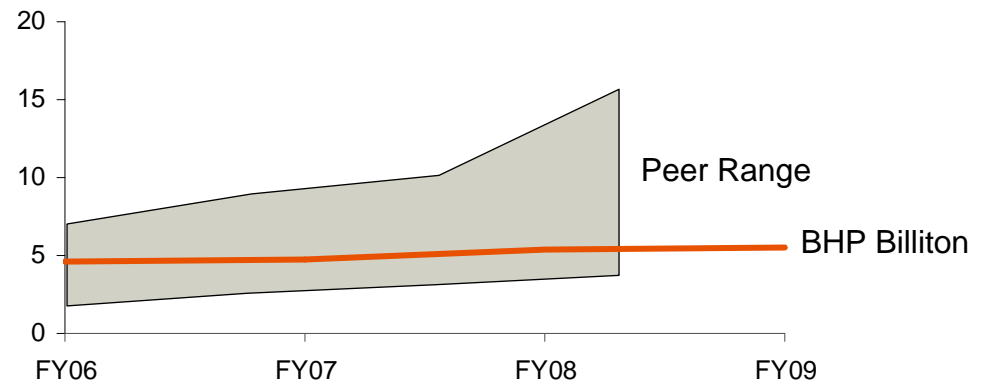
## Unit Cost Focus

- Unit operating costs hold steady at less than \$6.00/boe
- Unit DD&A at less than \$10.00/boe

## Production Efficiency (Uptime, %)



## Cash Operating Costs (US\$/boe)



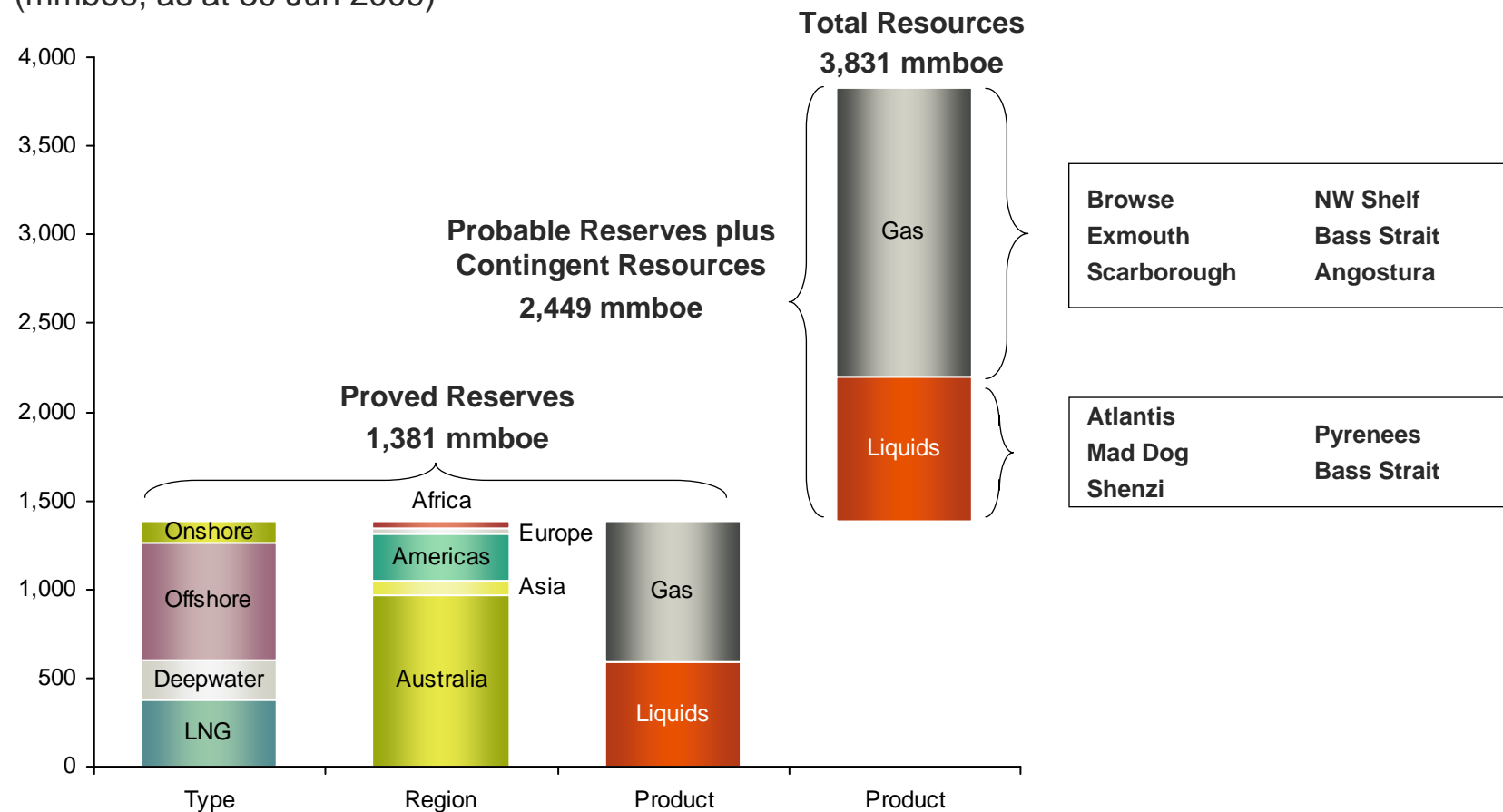
Peers: Anadarko, Apache, Devon, Hess, Murphy, Talisman, Woodside.



# Significant Resource Position to Support Long Term Growth

## Attributable Reserves and Resources

(mmboe, as at 30 Jun 2009)





# Commitment. Delivered.

- BHP Billiton Overview
- 2009 Petroleum Results
- **Project Delivery**
- Status of Discoveries
- Growth Options



# Shenzi (44% w.i., BHP Billiton operated)



## Project overview

- TLP and subsea wells
- 4,300ft water depth – 2nd deepest TLP in the world
- 100 kbpd and 50mmcf/d capacity (gross)
- Started up March 2009
- Currently producing over nameplate capacity with 9 wells available



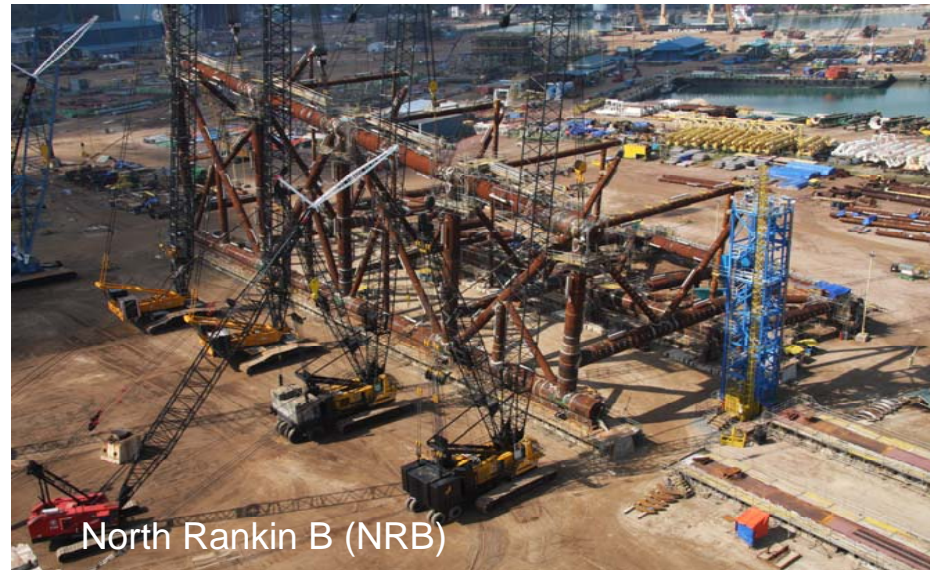


# North West Shelf (16.67% w.i., non-operated)



## Projects overview

- Train 5: 4.4 mpta (gross) LNG train – Started up August 2008
- Angel: 50 kbpd and 800 mmcfd (gross) – Started up October 2008
- NRB: 2,500 mmcfd (gross) under construction – CY12 start-up



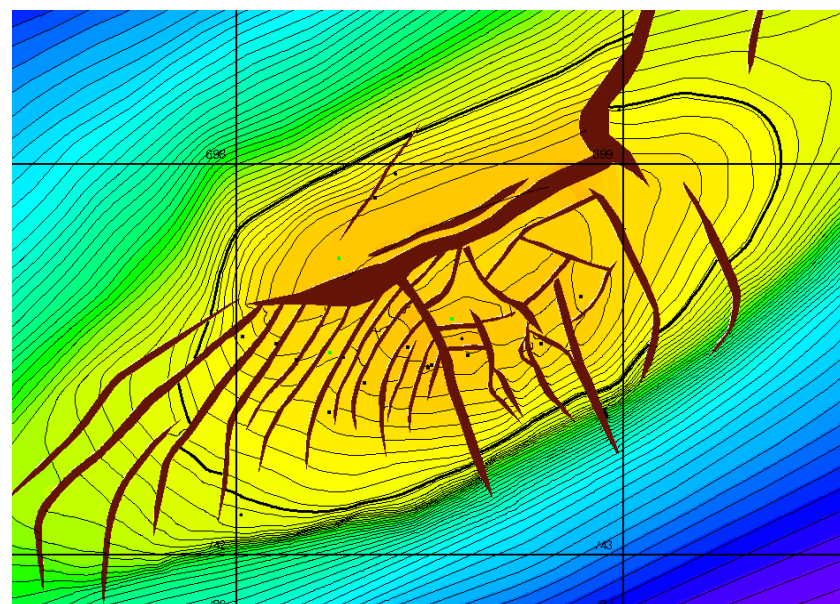


# Atlantis (44% w.i., non-operated)



## Project Overview

- Semi-submersible Facility producing ~140 kbd
- Water injection wells in progress
- Excellent results from Northern Well
- Giant field





# Pyrenees (71.43% w.i., BHP Billiton Operated)



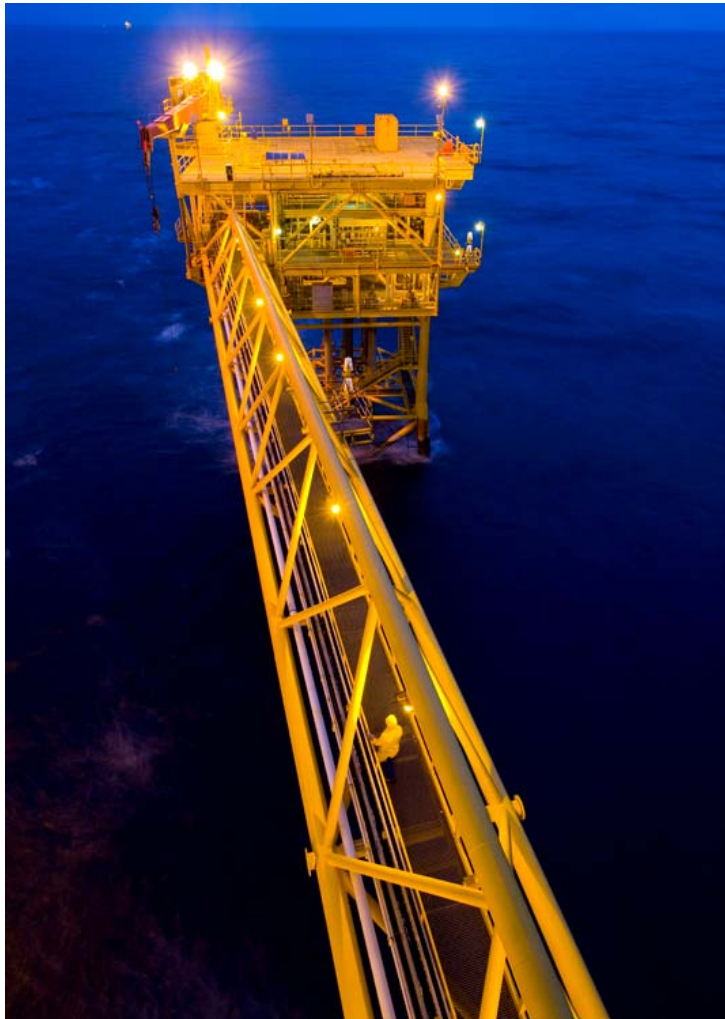
## Project Overview

- FPSO and subsea wells
- 96 kbpd and 60 mmcf/d capacity (gross)
- Drilling commenced January 2008.  
FPSO commissioning and subsea installation ongoing.
- Start-up H1 CY10





# Angostura Gas Phase II (45% w.i., BHP Billiton Operated)



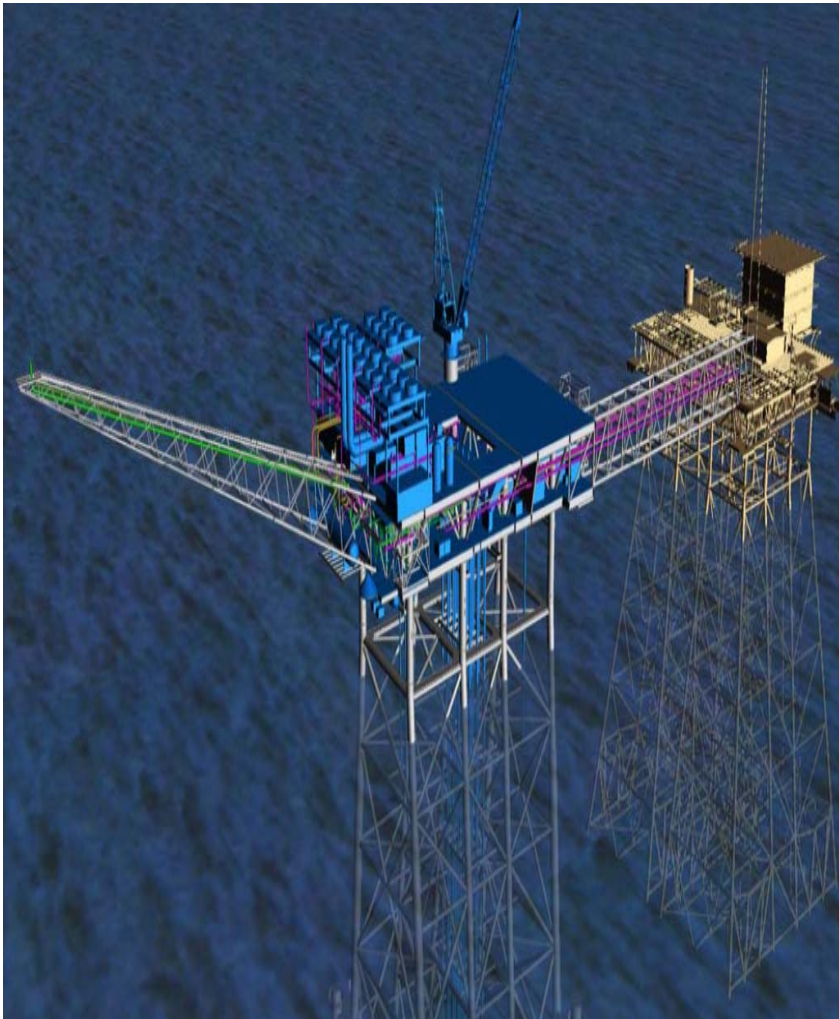
## Projects overview

- Installing new gas export platform adjacent to the company's existing facilities
- 280 mmcf/d capacity (gross)
- On schedule and budget. Platform fabrication continuing
- Start-up H1 CY11



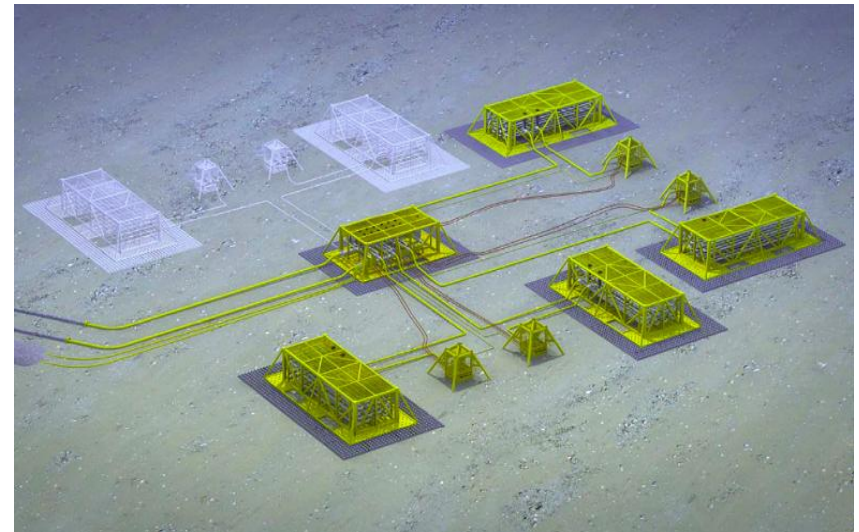


# Kipper & Turrum (32.5-50% w.i., non-operated)



## Project Overview

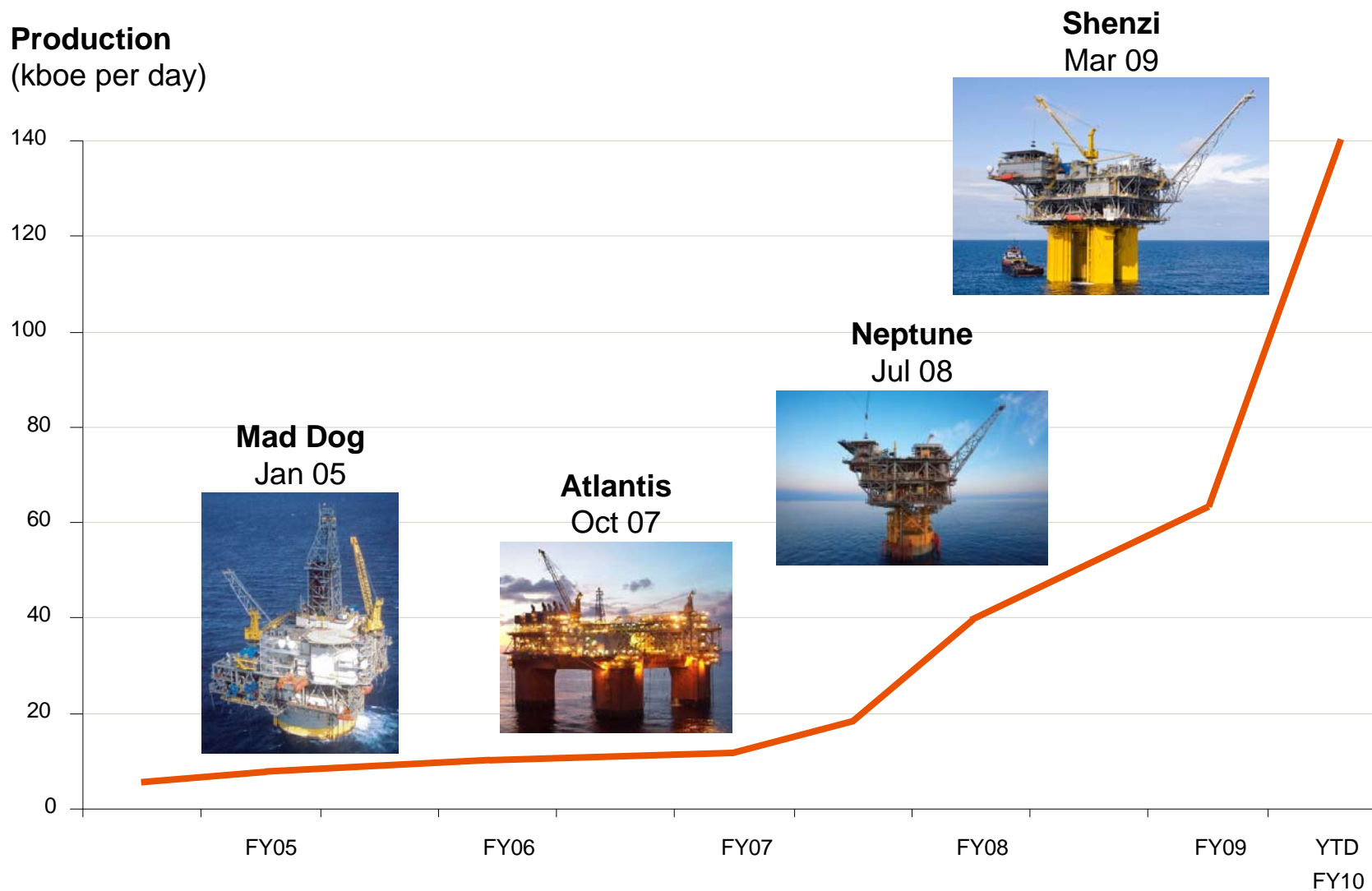
- Kipper: Subsea tieback to existing West Tuna platform: 80mmscfd/10kbpd condensate
- Sanctioned Nov 07. Start-up anticipated CY11
- Turrum: New platform (Marlin B) bridge-linked to existing Marlin A platform: 20kbpd/240mmcf. Sanctioned Jun 08. Start-up anticipated CY11
- Both under construction





# Gulf Of Mexico Business

**Production**  
(kboe per day)



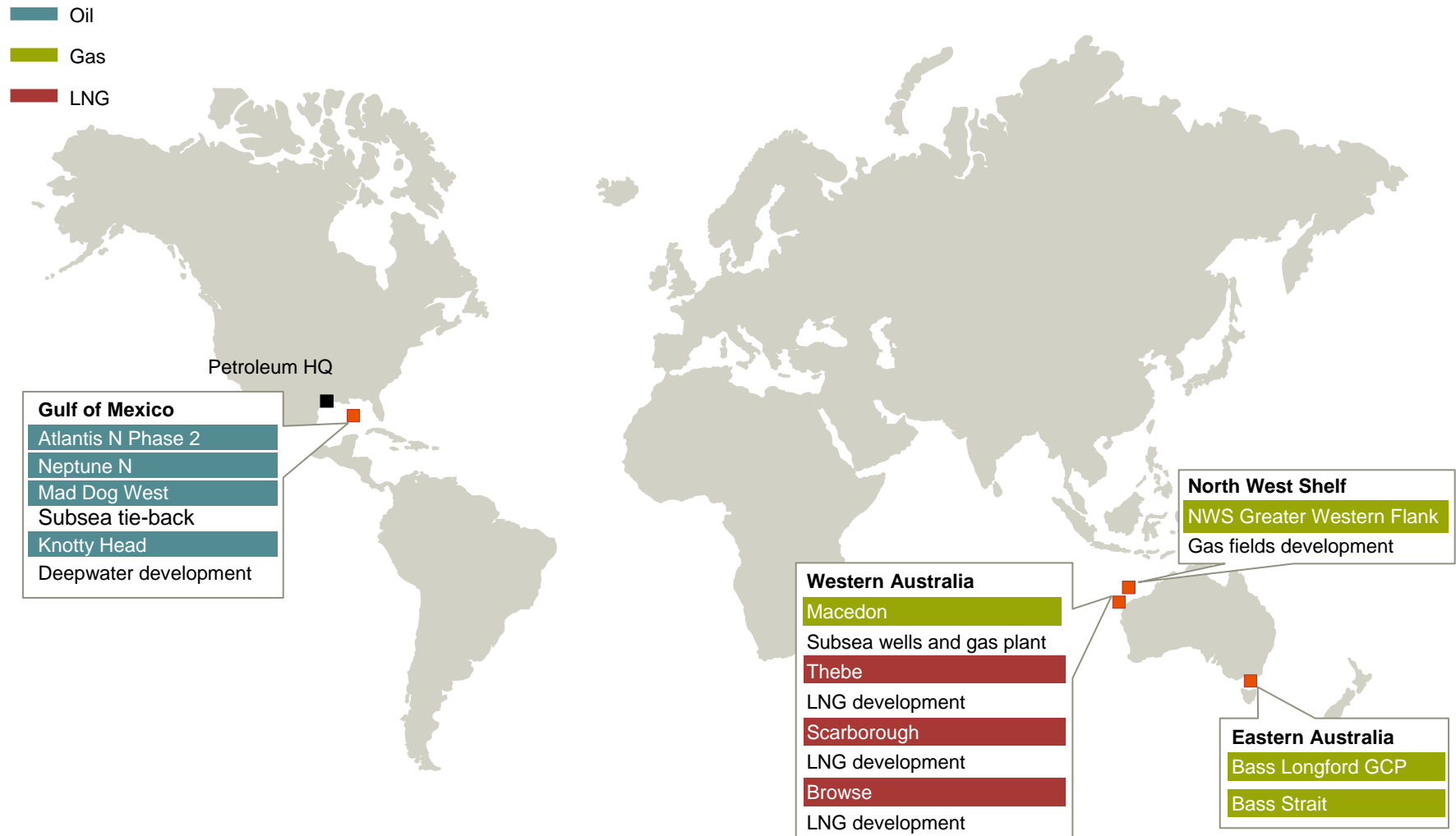


# Commitment. Delivered.

- BHP Billiton Overview
- 2009 Petroleum Results
- Project Delivery
- **Status of Discoveries**
- Growth Options



# Projects – Pre-execution



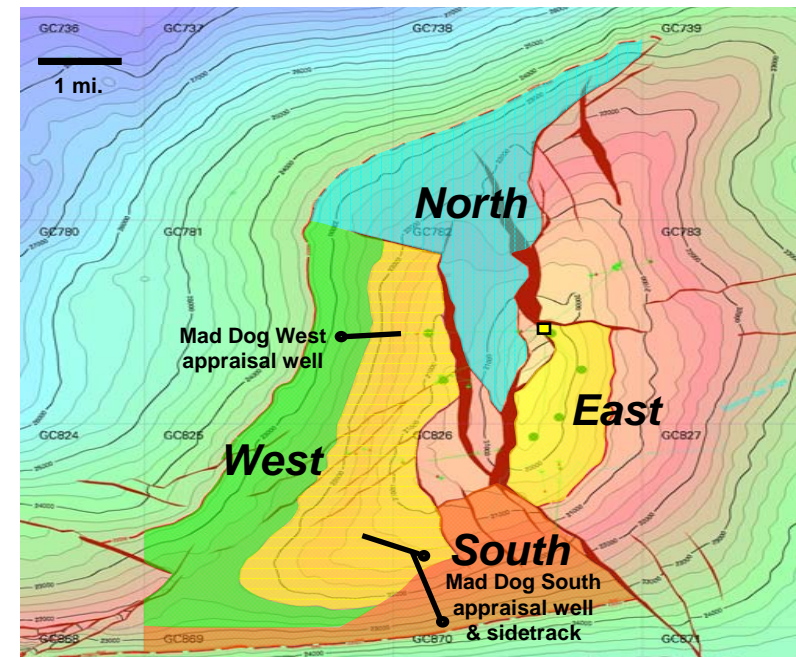


# Mad Dog Field (23.9% w.i., non-operated)



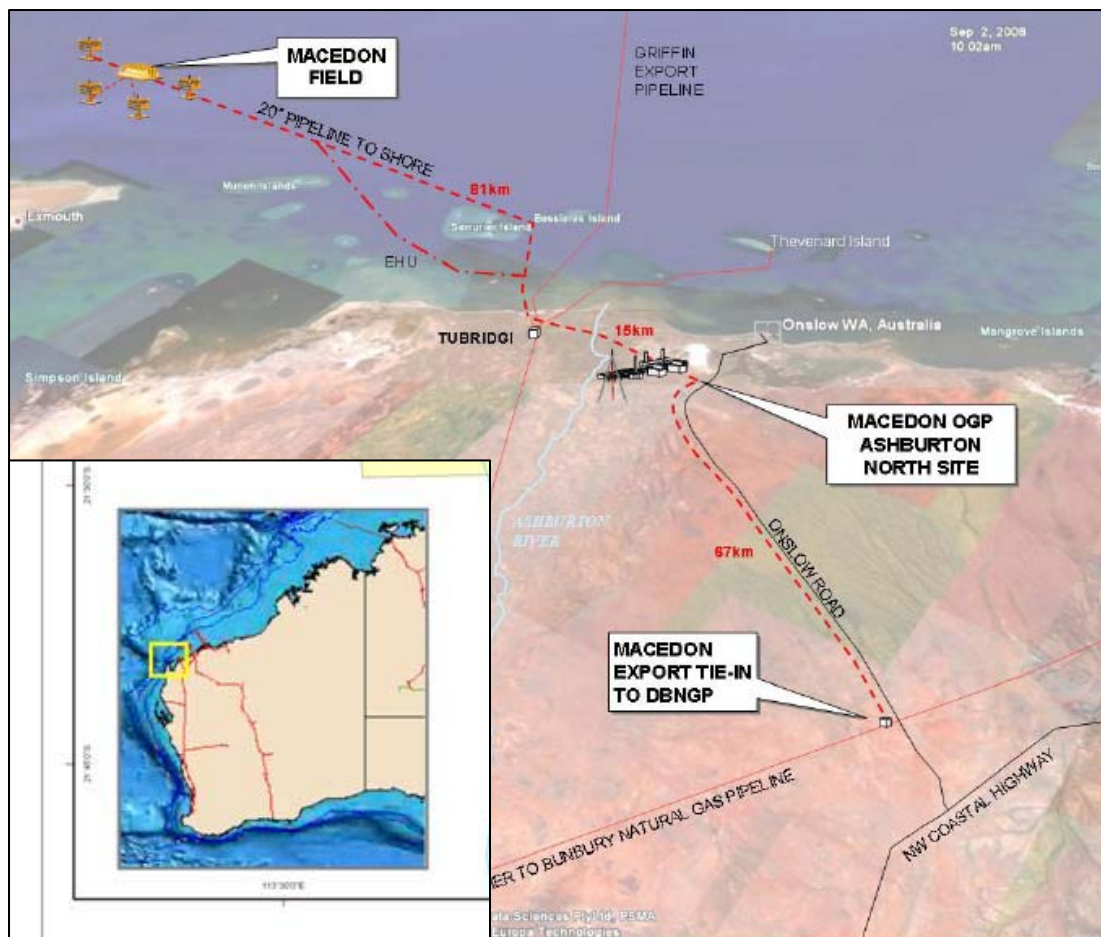
## Project Overview

- Spar Facility and 7 dry tree wells producing
- 80 kbpd and 40 mmcf/d capacity (gross)
- 4,500ft water depth
- West Extension well
- South Extension well (BHP Billiton drilled)
- Giant field





# Macedon Project (71.43 % w.i., BHP Billiton operated)



## Project Overview

- 800 bcf, 200 mmcf/d (gross) dry gas development
- FEED awarded Q3, 2009
- Planned sanction H1, 2010
- Planned start date 2013



# Commitment. Delivered.

- BHP Billiton Overview
- 2009 Petroleum Results
- Project Delivery
- Status of Discoveries
- **Exploration Program**



# Visible Exploration Program

## Goals

- Material to BHP Billiton Corporation
- Balance of proven hydrocarbon systems and frontier basins
- Have best available data
- Control, operate

## FY10 Budget \$600MM

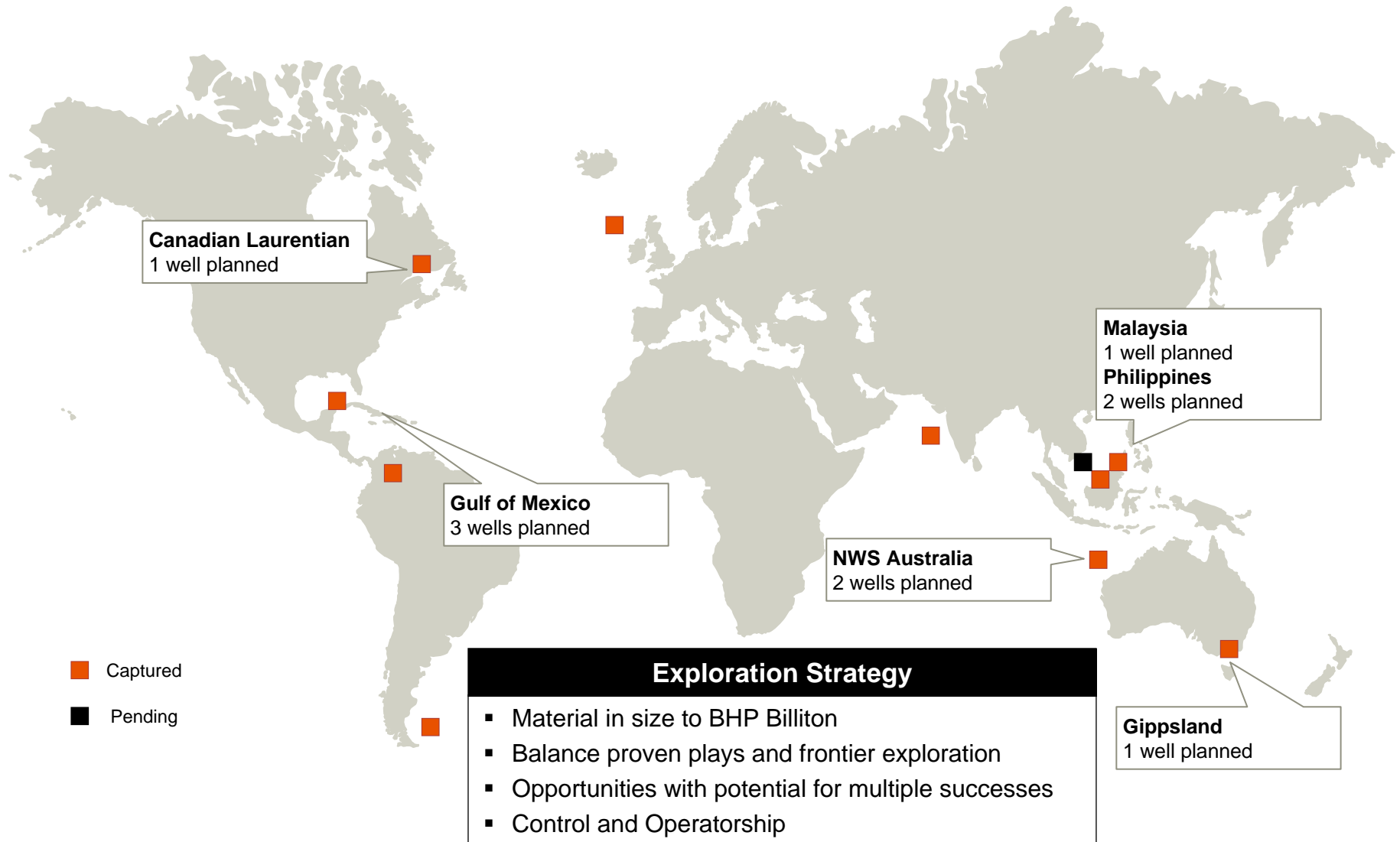
- 2/3rd of budget targeted at drilling
- Focused on drilling high impact wells in GOM, Malaysia, Canada, Philippines

## Continue Gaining Access to Material Resources

- GoM Lease Sale (28 of 33 blocks won), West Australia, Vietnam, India, Colombia
- Operate 88% of portfolio
- Average working interest 60% BHP Billiton share

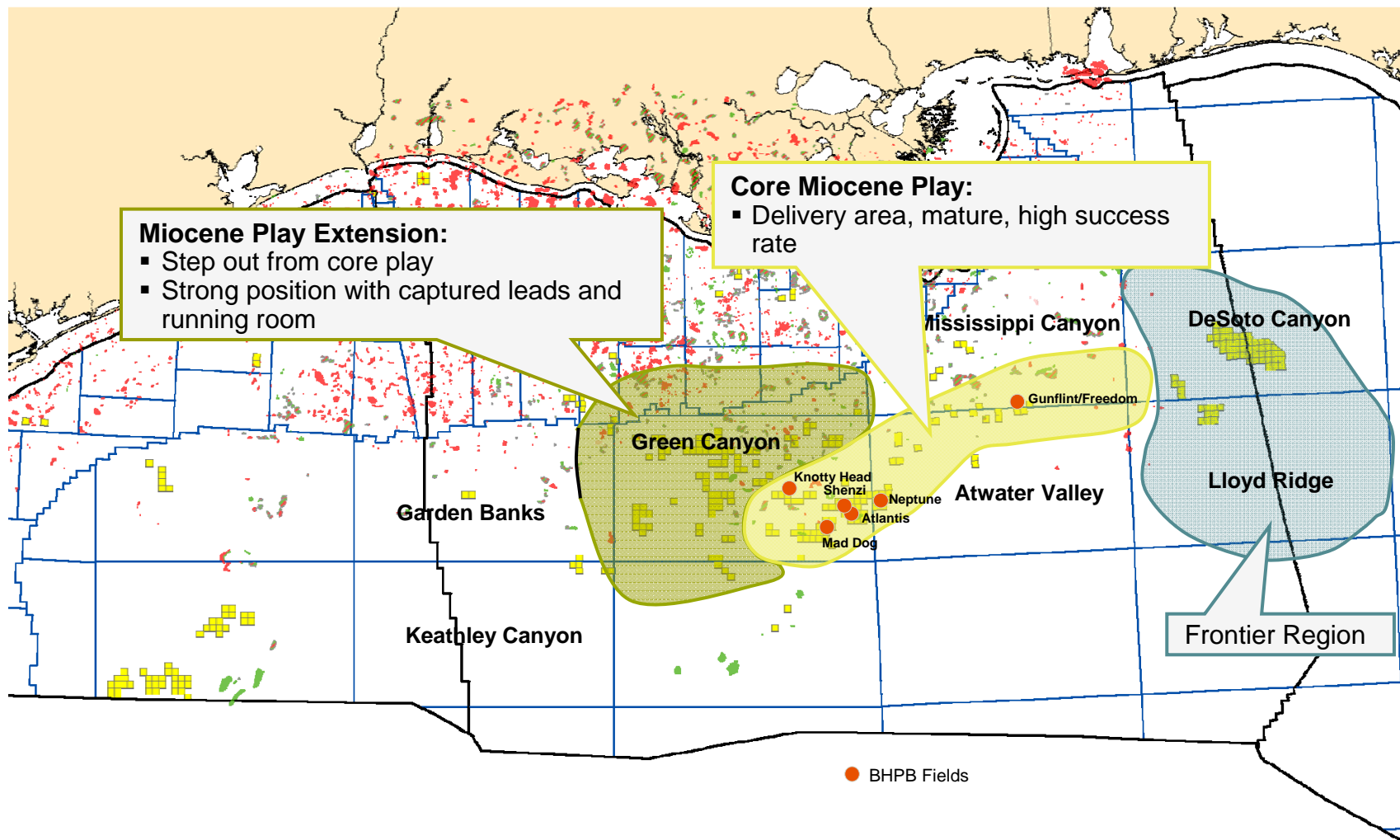


# Key Exploration and Appraisal Wells



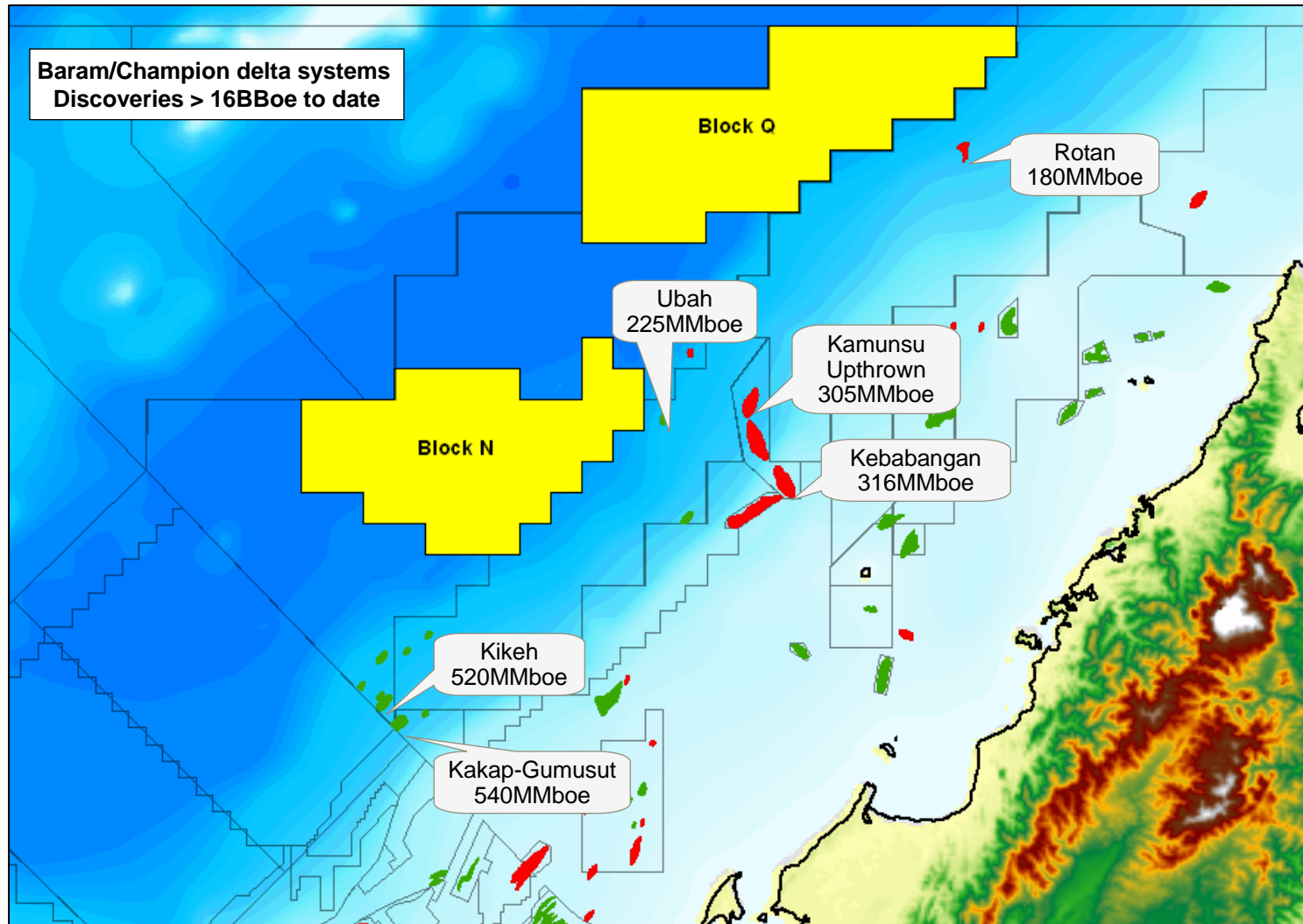


# Significant Gulf of Mexico Position





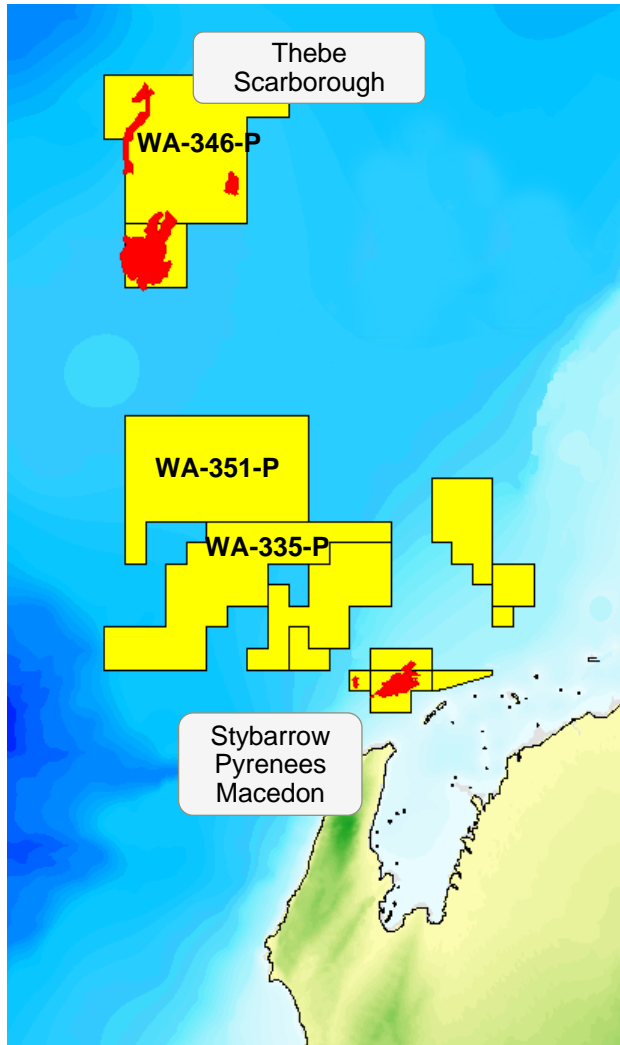
# Sabah – Block N Malaysia



Volume figures sourced from Woodmac



# Western Australia – Strong Position



## Overview

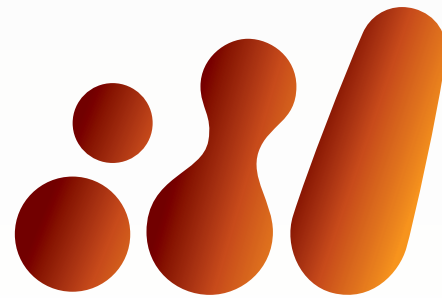
- Scarborough and Thebe discoveries - 12 TCF
- New WA335 acreage
- On trend with current proven resources at Stybarrow, Pyrenees & Macedon
- Proximity to existing/potential new LNG & domestic gas infrastructure



# Commitment. Delivered.

- **Best Safety in Industry**
- **Solid Production Base – Large, Long Life Assets**
- **Deep Inventory of Projects**
- **Goal of 10 Percent Volume Growth in FY10**
- **Consistent Solid Financial Results**
- **Low Cost, Stable Fiscal Countries**
- **Exploring in Great Neighborhoods**





**bhpbilliton**

resourcing the future