

Olympic Dam Expansion

Media tour

April 5 2006

Richard Yeeles, Group Manager, Corporate Affairs,
Base Metals Australia

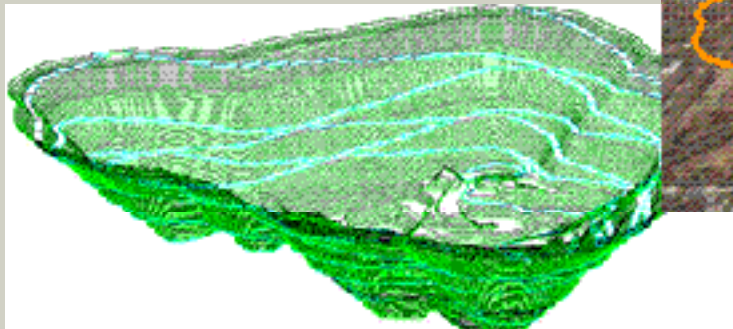


Agenda

- Olympic Dam – expansion potential
- Major infrastructure items
- Schedule

Olympic Dam – expansion potential

- Pre-feasibility Study underway
- Open-pit preferred mining method
- Approximately doubling copper and trebling uranium capacity
- Investment – up to US\$5 billion



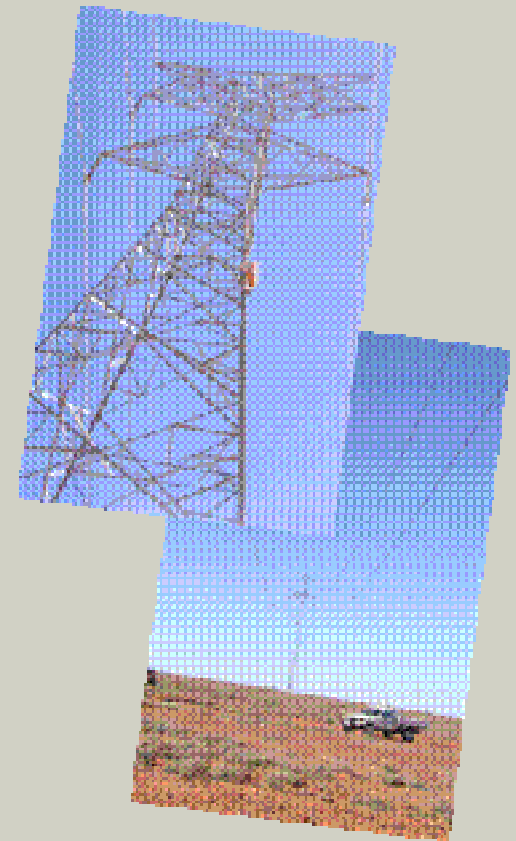
Major Infrastructure - water

- Olympic Dam current consumption – 32 MI/d from Great Artesian Basin
- Supply options studied include –
 - Third borefield in Great Artesian Basin
 - Seawater desalination
 - A local regional aquifer borefield and/or
 - Further on-site re-cycling



Major Infrastructure - energy

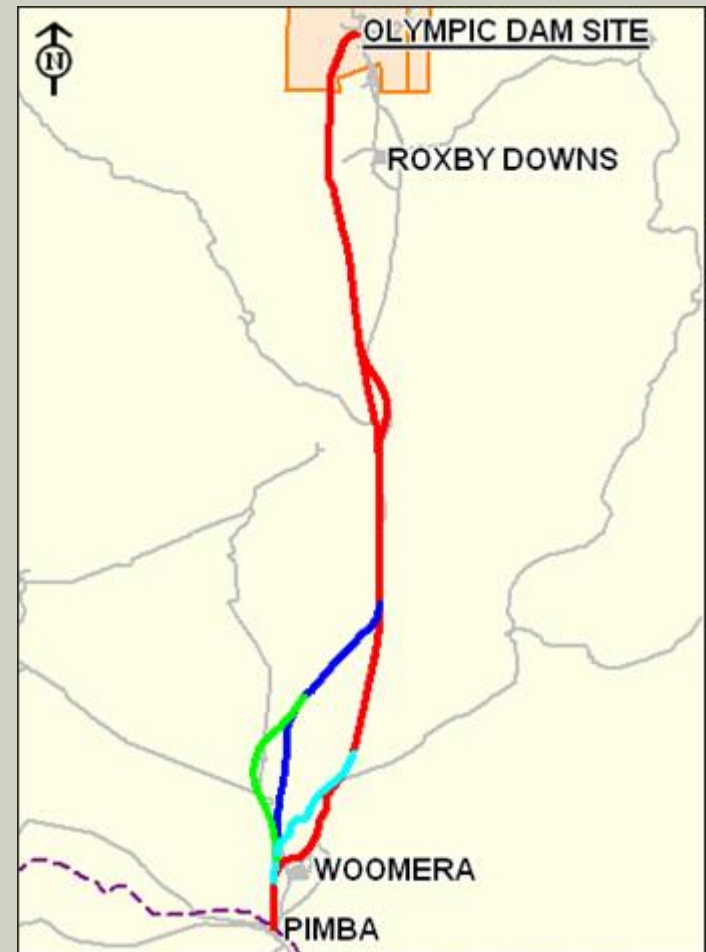
- Current 275 kV powerline from Port Augusta – av. load 105-115 MW
- Av. load for expansion ~ 400 MW
- Options
 - additional transmission line(s) from State grid
 - and/or on-site gas fired generation



Major Infrastructure - Transport

- Materials transported to and from Olympic Dam by road
- Construction of rail link between Pimba and Olympic Dam under consideration
- For expansion, ~ 2.2 mtpa of materials to be carried
- Upgrading of port facilities
- Relocation of Olympic Dam Airport

Possible Rail Route



Major Infrastructure – township development

- Roxby Downs – current population 4,000
- Increase to ~9,000 after expansion – housing, community facilities (school/health/recreational)
- Construction workforce for 3-4 years – average +3,000, requiring additional camp accommodation



Schedule

Timeframe

- Pre-Feasibility tollgate – end 2007
 - Planning and preliminary engineering
- Feasibility tollgate – early 2009
 - Detailed engineering
 - Contracts for construction
 - Possibly some early site works
- Execution phase – 2009-2013
 - Construction
 - Construction support
 - Pre-operations
- Operation of Expanded Facilities – 2013+

