

Port Hedland

Presentation to Analysts June 2005

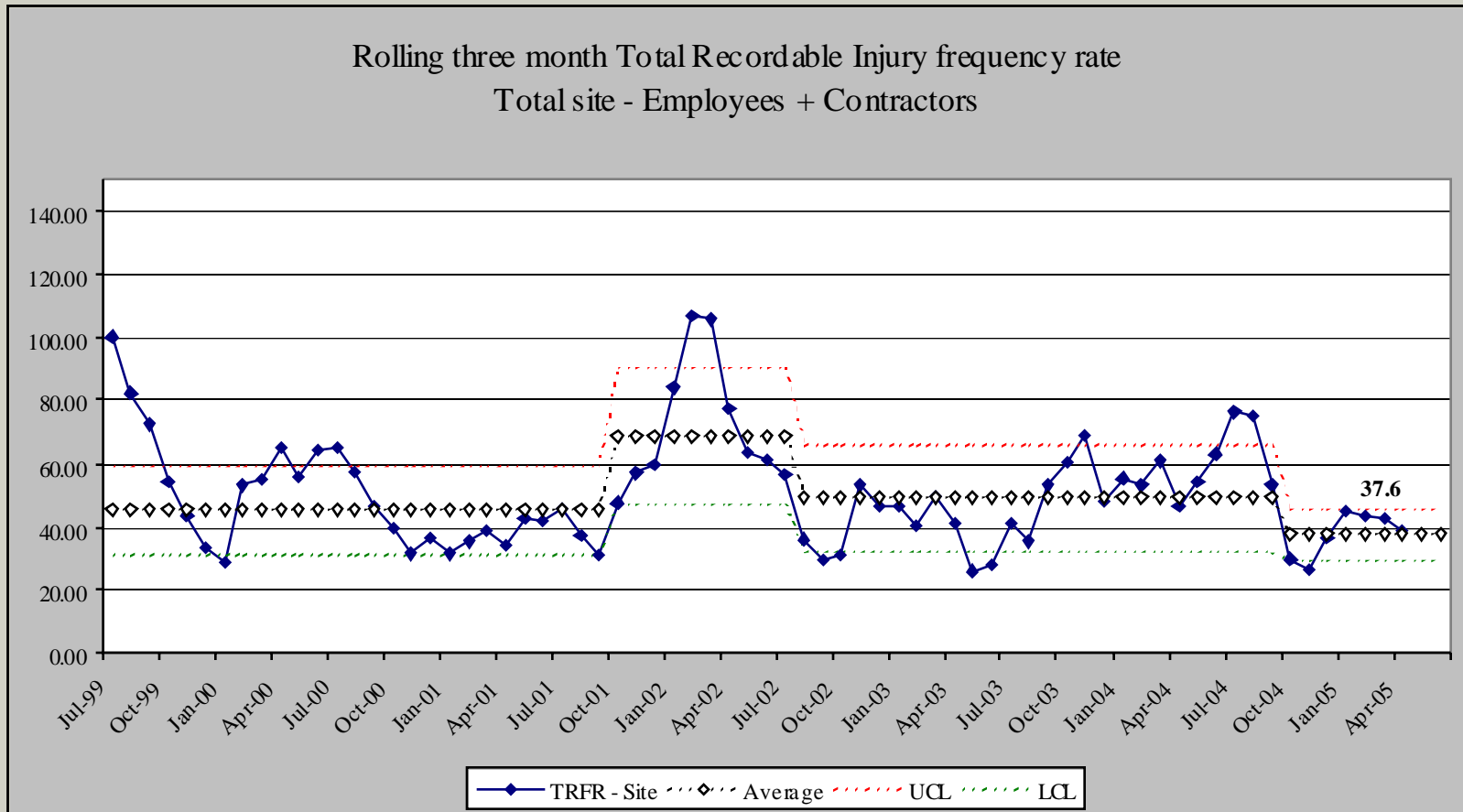


Mick Evans, Vice President Ports

Iron Ore



Safety performance – Total recordable injury rate



Sustainable Development

Aboriginal Employment

Ngarda Civil & Mining, Departmental indigenous targets, Cultural training

Environmental Management

Dust, Greening projects, Water recycling, noise controls, mangrove care

Community Relations

Community Consultation Group, Management involvement in community, community investment, Environmental Economic and Social impact analysis on each project

Local Economy

Local sourcing, workforce reside local, partnerships with Local Government

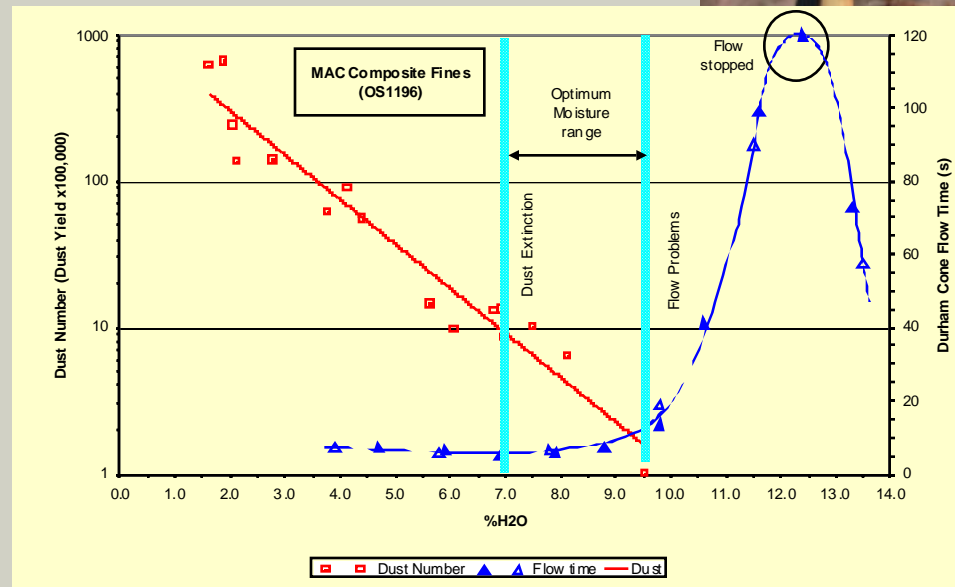


Emission Controls

Benchmarked as worlds best practice

Extensive dust management program, components:

- Dedicated team
- Program based on scientific research (NTC & CSIRO)
- Employee education
- Community involvement
- Local amenity projects
- Positive relationship with regulators



People – The key to our success

- Strategy based upon CSM People Performance Framework
 - Business systems
 - Leadership systems
 - Workforce performance systems
 - Employee development systems
- Workforce
 - Combination of employees and contractors, working day work and continuous shift rosters
 - Total persons on site varies dependent on workload, but generally between 850 and 1,000 people

Business Excellence

Predictable Continuous Improvement

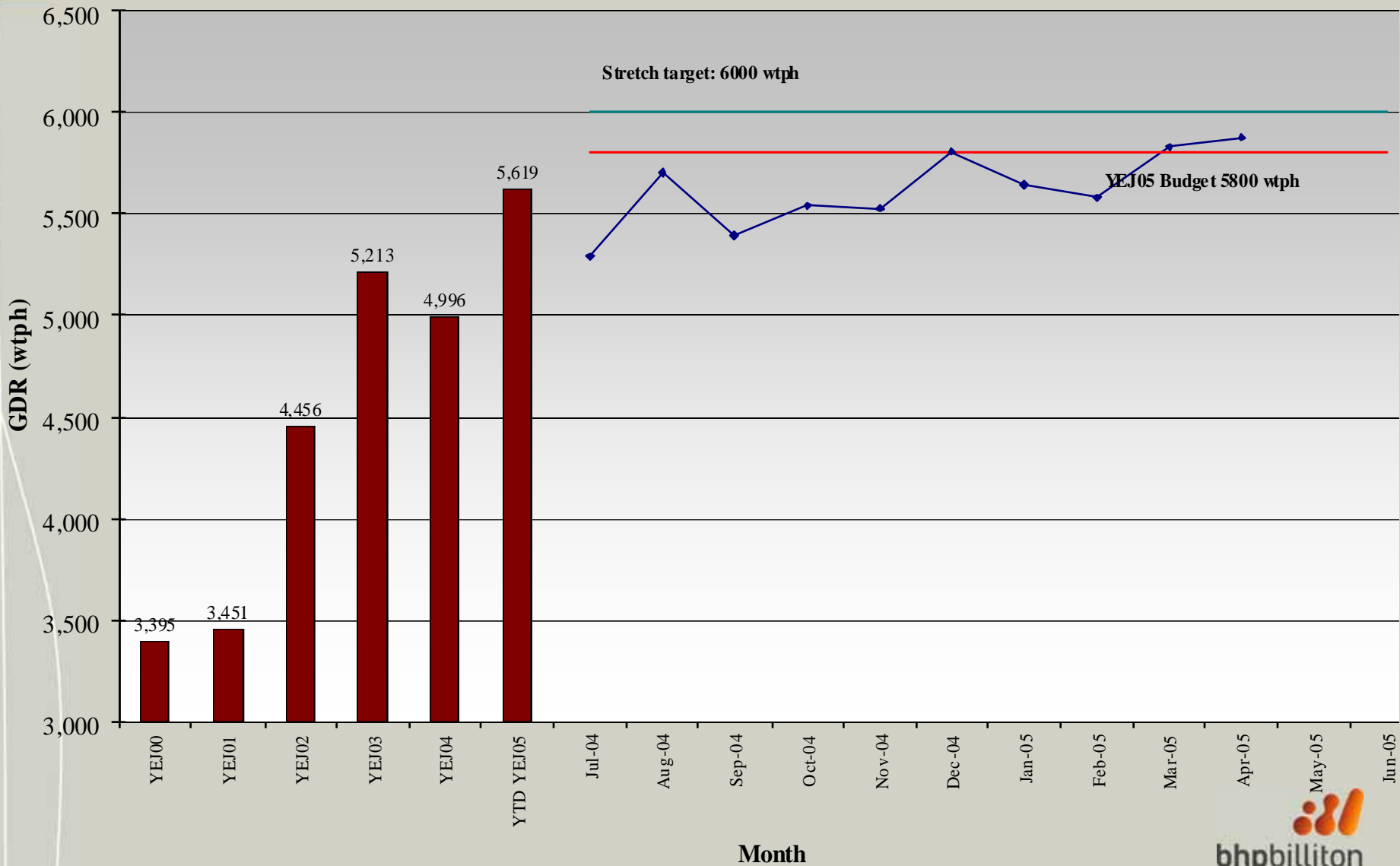
Project Pipeline Focussed on System Bottlenecks

- Car dumper 3 net dumping rates of DSO to the South Yard
- Improve TCB 1 and 2 throughput – Nelson Point Feb – May 05
- Maintenance services spend by contractor
- Dumper shutdown planning optimisation – Nelson Point Dec – Mar 05
- Planning lead time – Port Maintenance

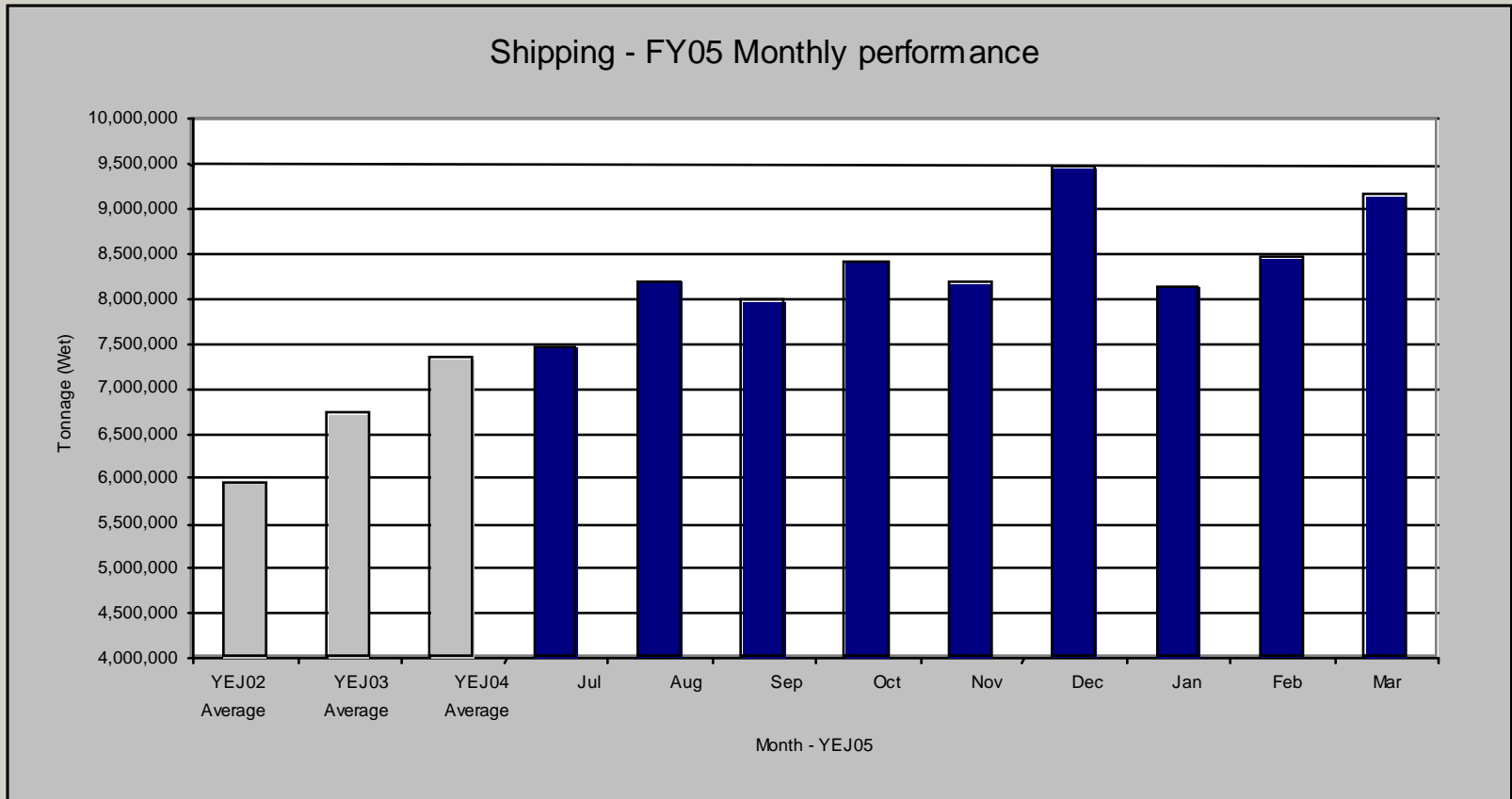


GDR - YEJ05 Monthly Averages vs Historical Monthly Averages

Yearly Figures Monthly GDR



Shipping – Monthly performance



Port Hedland



Port Hedland – Port Facilities



Finucane Island

- 1 bottom car dumper
- 1 Primary stacker
- 2 dual stacker/reclaimers
- 1 berth

Nelson Point

Capacity

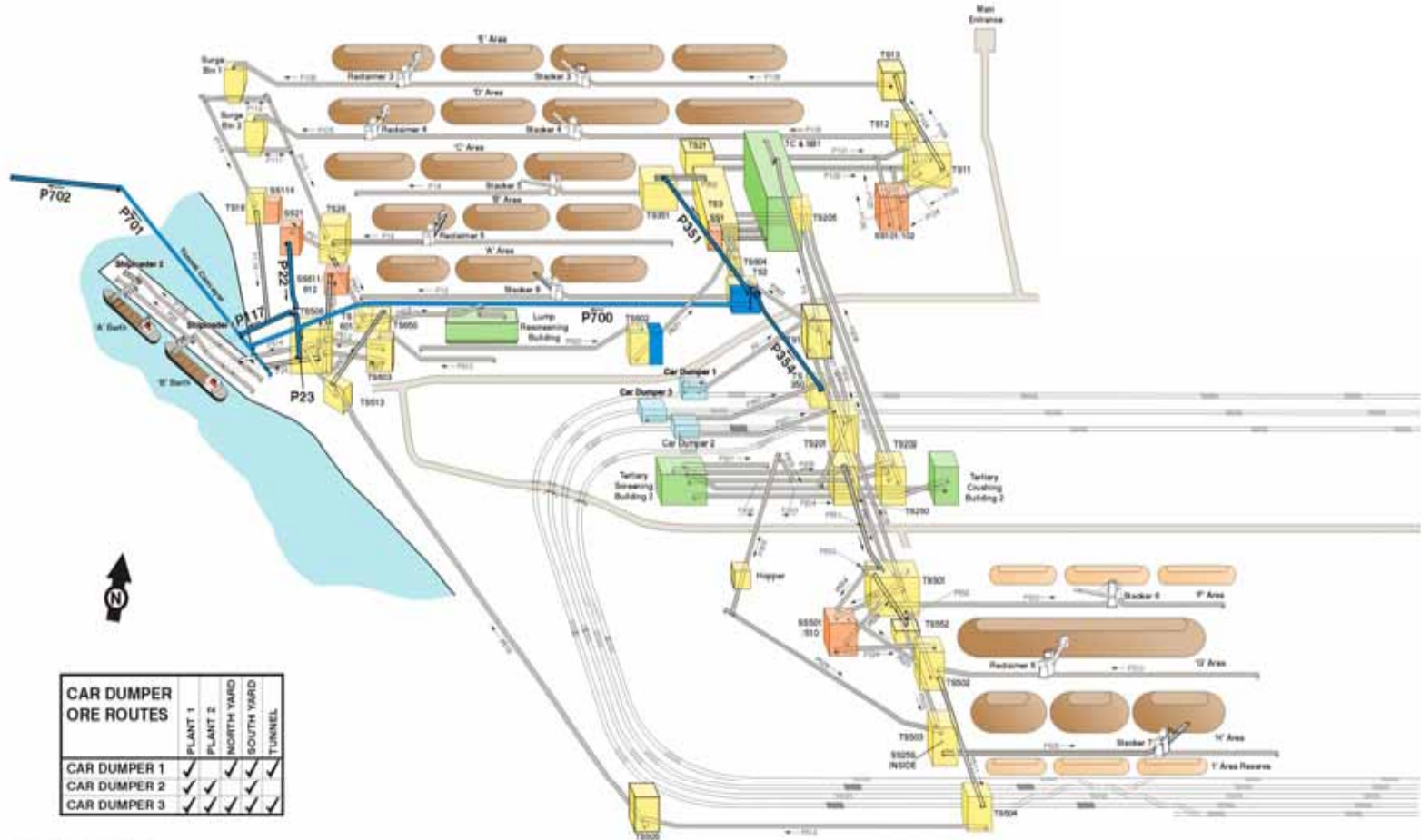
- 3 Car dumpers - 1 x 8,000tph, 2 x 10,000tph
- 4 Reclaimers - 2 x 7,500 tph, 2 x 10,500tph
- 6 Stackers - 2 x 6,500, 2 x 8,500, 2 x 10,000
- 2 Berths – 2 x 10,000tph
- 1 Lump Rescreening Plant

Western Stockyard

Capacity

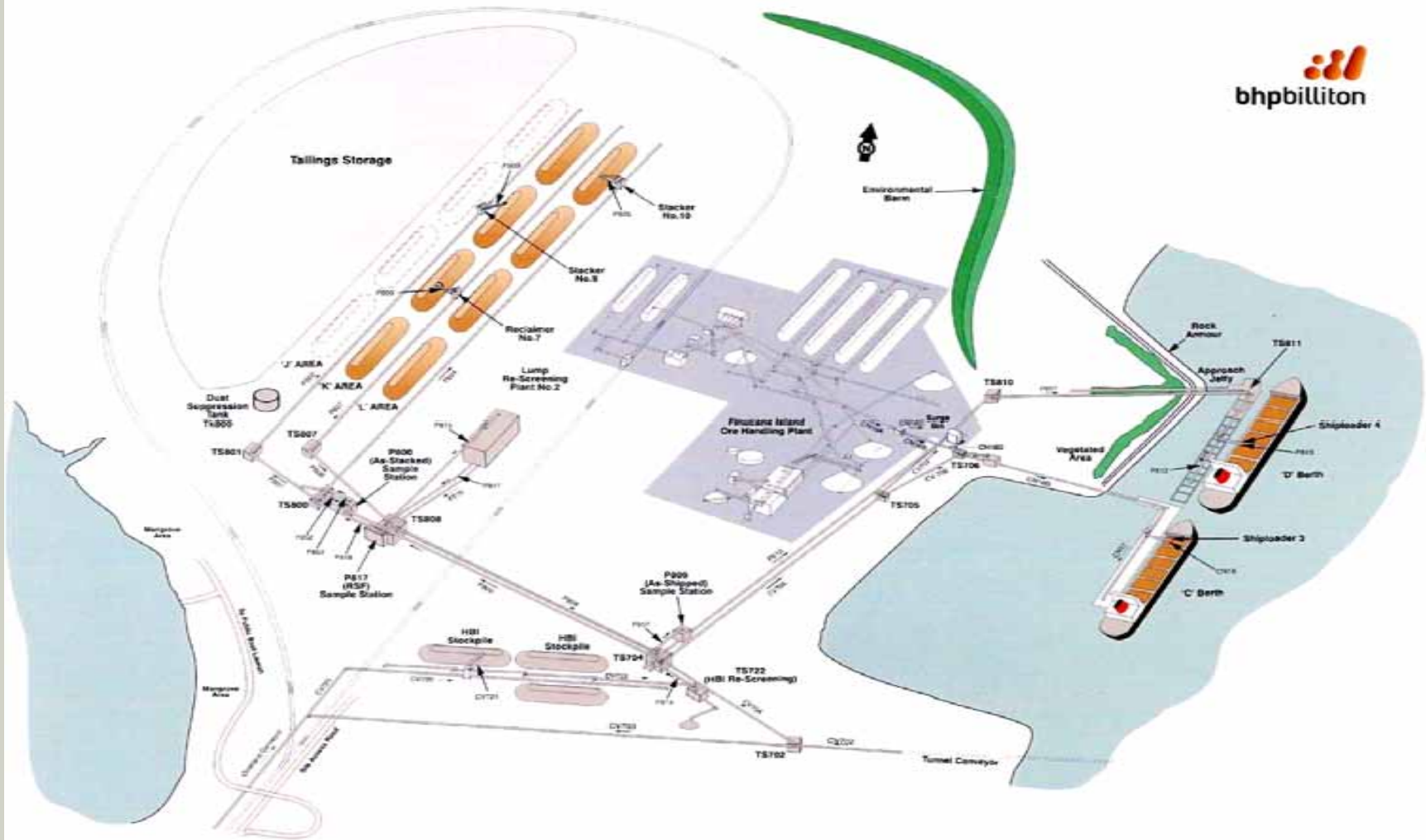
- 2 Stackers – 2 x 10,000tph
- 1 Reclaimer - 10,000tph
- 1 Berth - 10,000tph
- 1 Lump Rescreening Plant

Ore Handling Flow Chart – Nelson Point



Nelson Point Ore Handling Plant - 01/01/2011

Ore Handling Flow Chart - Western Yard



Shipping

Nelson Point & West Yard
target gross loading rate
6,000 tph

Finucane Island target
gross loading rate 3,100
tph

Target vessel turnaround
time 65 hours



- Average maximum sailing draft (MSD) 17.94m
- A dynamic underkeel clearance program (DUKC) is utilised to calculate vessel maximum sailing draughts
- Port is serviced by 5 x 50 tonne, 2 x 65 tonne bollard pull tugs, with one redundant 50 tonne vessel.

The Western Yard – The People

- The Western Yard is not only our most modern facility but also has adopted a different way of working.

**Superior results through
ownership and pride.**

- A one team concept
- A flat structure – without layers of supervision
- An approach based on leadership
- An organisation founded on a common set of values and behaviours

We will achieve superior results through ownership and pride.

We will build the capabilities of our people through:

- broadening our skills.
- valuing the contribution of each person.
- being able to influence outcomes.

Our success will be seen in:

- the efficiency and efforts of the team.
- the condition of the plant.
- a supportive work environment
- our safety performance.

Western Yard – Shipping performance

