

Nelson Point Port Operations

Presented by Dean Dalla Valle



bhpbilliton

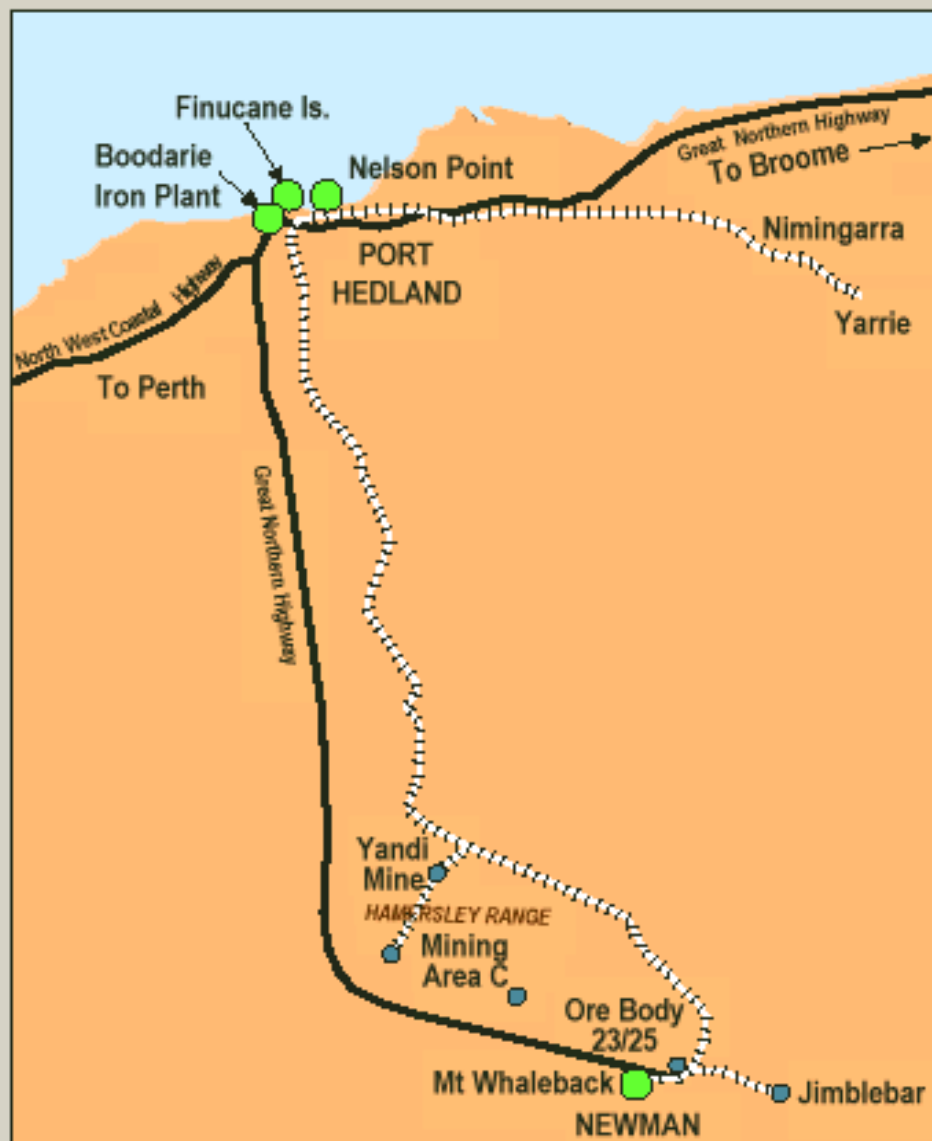
Visitor Safety

- **Stay with your BHP Billiton escort at all times**
- **Safety helmets are provided for you and you will be advised when to wear them**
- **Safety glasses are provided and must be worn at all times when outdoors whilst on site**
- **Use handrails when using stairs**
- **Keep clear of conveyors and all machinery**
- **There is a no smoking policy inside buildings and vehicles**
- **In the case of an emergency stay with your BHP Billiton escort**

Relativities between BHP Iron Ore and other Bulk Commodity Exporters (Wet Metric Tonnes)



BHP Billiton – WA Iron Ore Business



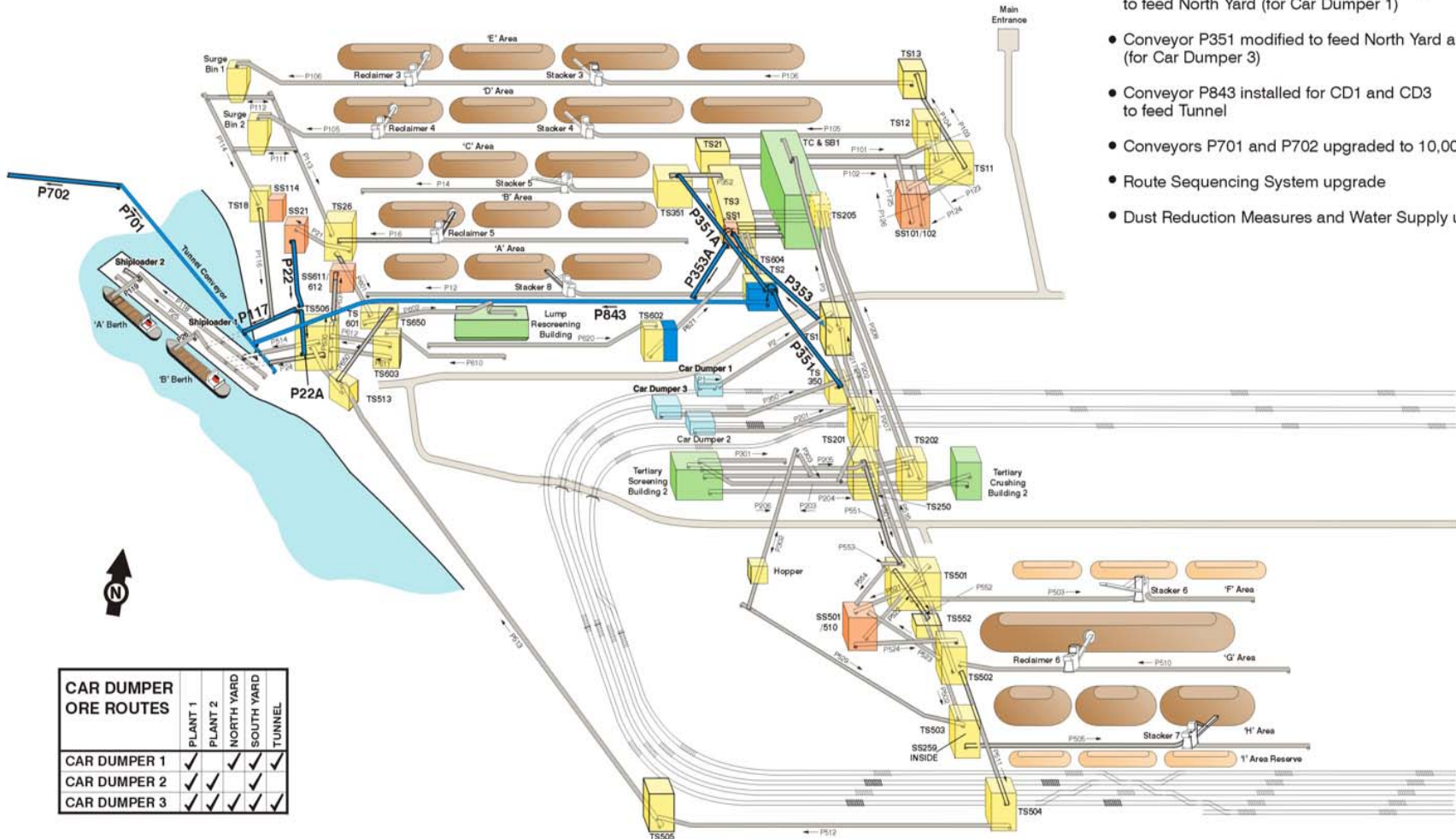


PRODUCTS AND CAPACITY EXPANSION PROJECT NELSON POINT WORKS

PRODUCTS AND CAPACITY EXPANSION PROJECT (PACE) NELSON POINT SCOPE OF WORK

STAGE 1

- Sample Station SS602 installed for sampling of LRP returned fines
- Conveyor P22 modified to feed P24 and P117 Shuttles and P117 Shuttle extended
- Conveyor P353 modified and new conveyor P353A installed to feed North Yard (for Car Dumper 1)
- Conveyor P351 modified to feed North Yard and Tunnel (for Car Dumper 3)
- Conveyor P843 installed for CD1 and CD3 to feed Tunnel
- Conveyors P701 and P702 upgraded to 10,000tph
- Route Sequencing System upgrade
- Dust Reduction Measures and Water Supply upgrade



| CAR DUMPER ORE ROUTES | PLANT 1 | PLANT 2 | NORTH YARD | SOUTH YARD | TUNNEL |
|-----------------------|---------|---------|------------|------------|--------|
| CAR DUMPER 1 | ✓ | ✓ | ✓ | ✓ | ✓ |
| CAR DUMPER 2 | ✓ | ✓ | ✓ | ✓ | ✓ |
| CAR DUMPER 3 | ✓ | ✓ | ✓ | ✓ | ✓ |

PRODUCTS AND CAPACITY EXPANSION PROJECT WESTERN STOCKYARD WORKS

PRODUCTS AND CAPACITY EXPANSION PROJECT (PACE) WESTERN STOCKYARD SCOPE OF WORK

STAGE 1

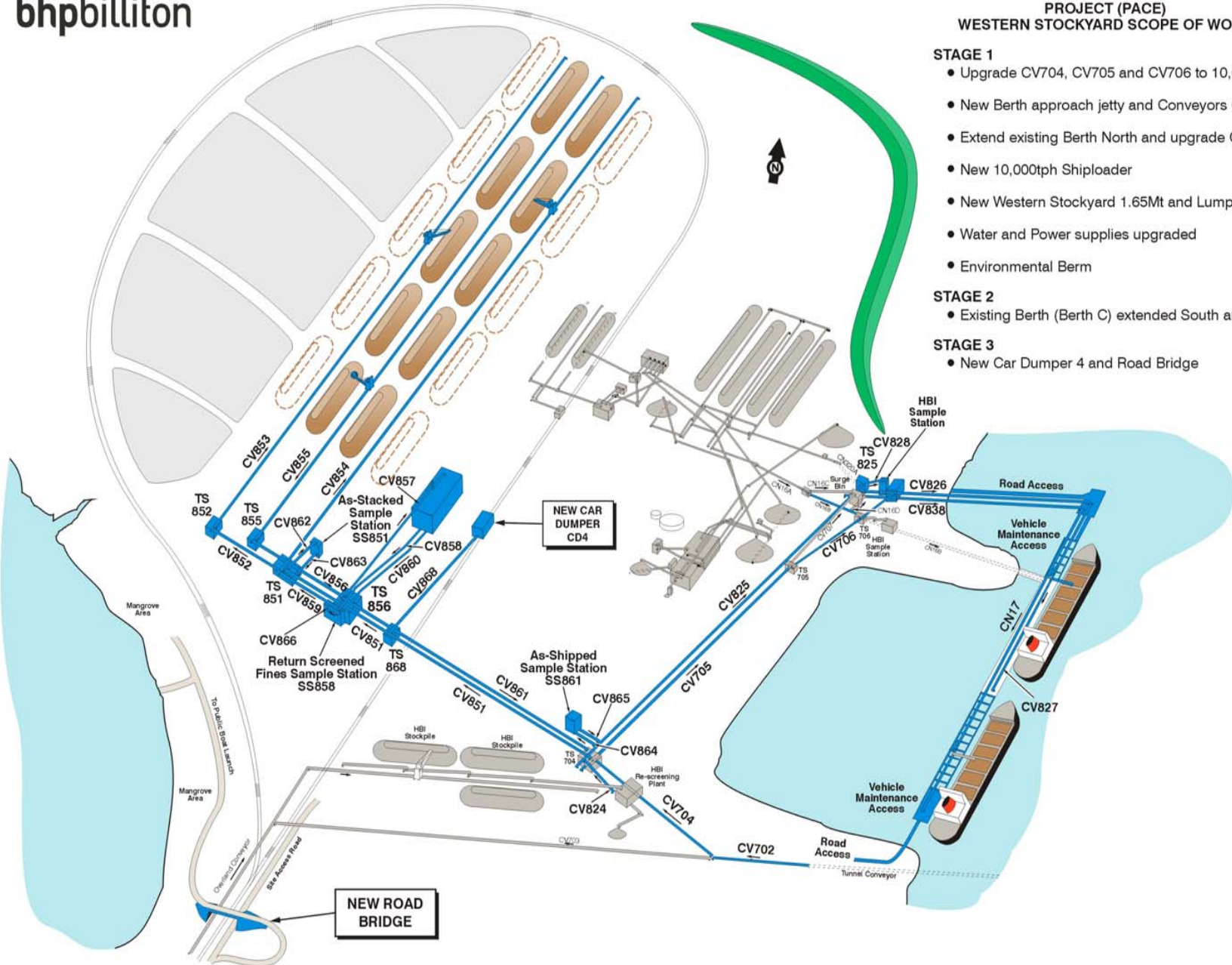
- Upgrade CV704, CV705 and CV706 to 10,000tph
- New Berth approach jetty and Conveyors CV826 and CV838
- Extend existing Berth North and upgrade Conveyor CN17
- New 10,000tph Shiploader
- New Western Stockyard 1.65Mt and Lump Re-screening Plant
- Water and Power supplies upgraded
- Environmental Berm

STAGE 2

- Existing Berth (Berth C) extended South and Conveyor extended

STAGE 3

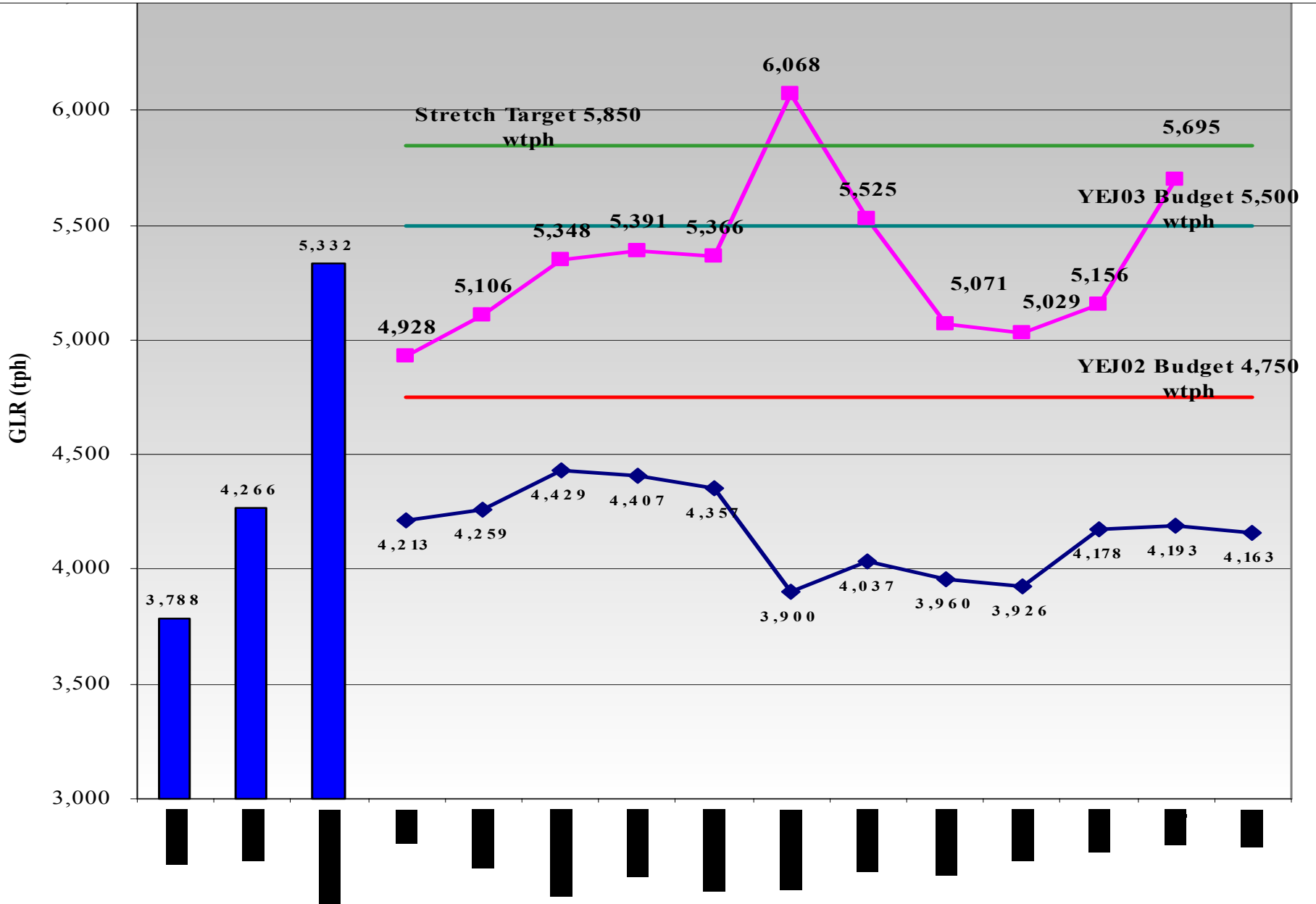
- New Car Dumper 4 and Road Bridge



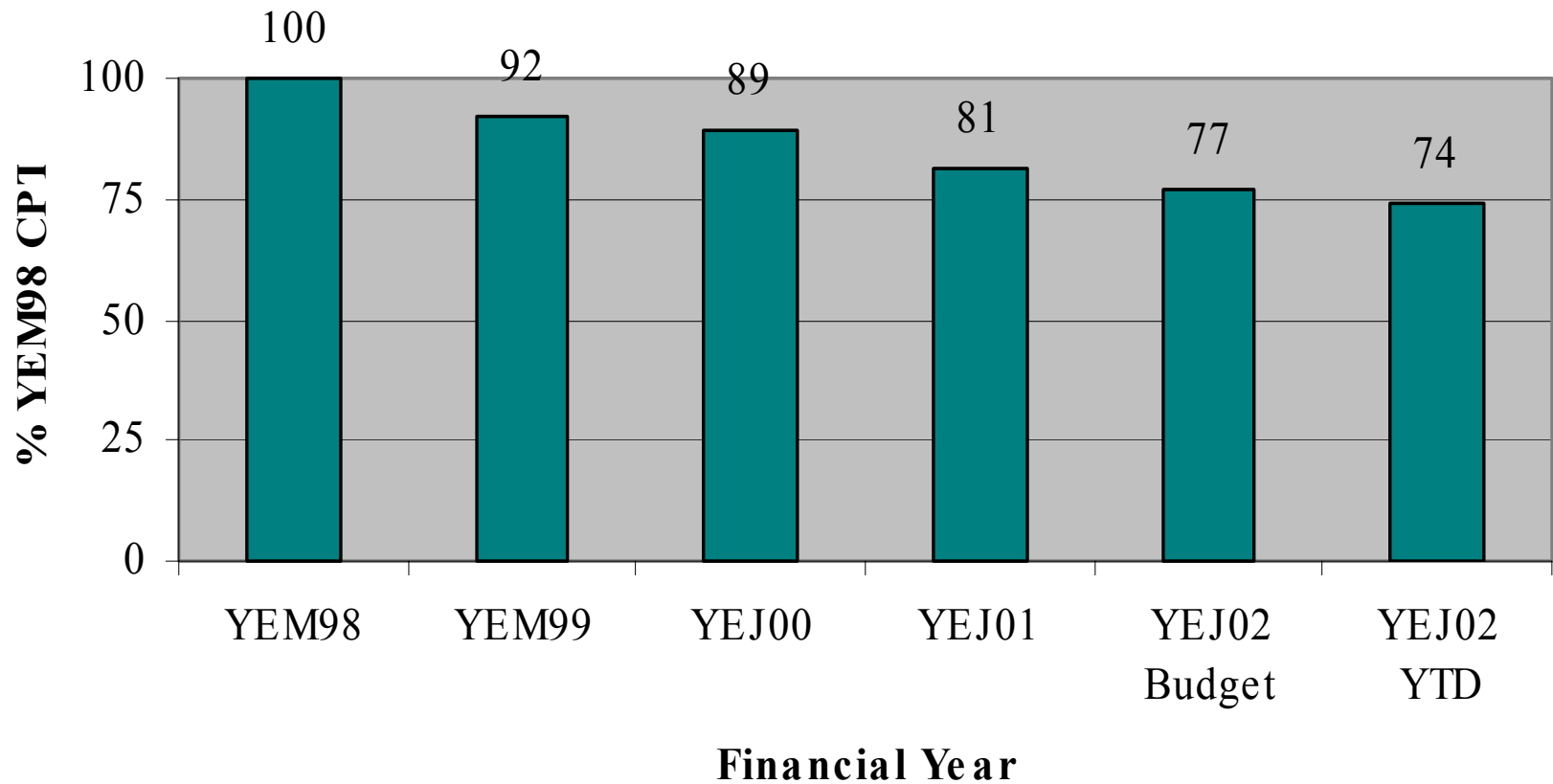
GLR - YEJ 02 Monthly Averages vs Historical Monthly Averages

Yearly Figures

GLR Monthly Historical Average From 1995 to 2001 Dry tph



Cost per Tonne (wet) Shipped as % of YEM98



Port Operations Business Drivers

| COMMUNITY RELATIONS | COST | EFFICIENCY | ENVIRONMENT | GROWTH | PEOPLE MANAGEMENT | MARKETING | SAFETY | TONNAGE |
|---|---|---------------------------------------|---|--|--|--|---|---------|
| Indigenous Employment (2% Increase) | Improved Contractor Management | Leveraging of GLR/GDR Energy | Achieving Dust targets whilst increasing throughput | PACE Project | Alignment of workforce under new arrangements | Quantifiable relationship benefits & synergy | Alignment of Department | GLR |
| Carry out Baseline Study of Community Amenity | CAPEX Management Process | Mine/Rail/Port/Perth Integration | H=S=E=C Alignment | Operations Personnel Involvement in PACE | Retention of Quality Personnel :Matching housing needs of personnel: Succession Planning | | Implementation of Rules, Standards and Procedures | GDR |
| Engaging Community/BHPB Community Involvement | Develop Budget Beating Culture \$10 million this year | Institutionalise Operating Excellence | | | Releasing potential of Personnel | | Full Implementation of POSH | |
| Green Screen Project | | | | | | | | |

BHAGS

Nelson Point 6000
GLR

Demurrage Savings

FI 1500 HBI GLR

Direct Arrangements

FI 3500 GLR

Dust <90ug Town
Monitor

By June 30 2003 all
employees to have
had performance
review

\$10 million Savings
under budget

Involve Every Staff member
in Business Improvement
Project