

MT ARTHUR MINE COMPLEX

Community Consultative Committee Meeting – 3 May 2017

Attendance

Chairperson

Dr. Colin Gellatly Independent Chair MAC CCC

Company Representatives

Chris White Lead Corporate Affairs
 Mick Hanly Community Team
 Andrew Darnell Specialist Environment
 Jason Desmond Specialist Environment
 Will Ringland Planning - Mid Term Superintendent
 Duane Uren Exploration Supervisor

Council

Cr. Mark Bowditch Muswellbrook Shire Council

Community Representatives

Alex MacDonald Community Representative
 John Bancroft Community Representative

Apologies

Di Gee Community Representative

Minutes

Sarah Purser

1. Meet Mt Arthur Coal Boardroom - Collect PPE
2. Site Tour; Inspection of Overburden aerial seeding, MacLean's Visual Edge and Rehabilitation
3. Return to Administration / Boardroom

4. Welcome by Chairperson

Col welcomed members and advised that Jenni Hayes had resigned from the Community Consultative Committee (CCC). Members asked that Jenni be acknowledged and thanked for her valuable contribution to this forum. Col advised that he and Chris had been in discussions regarding advertising the two community vacancies in the local press and Col asked if members knew of other community members that may be interested in joining the group to encourage them to get in touch with him; **Colin Gellatly: 0417 203 249 or via email: colinggellatly@hotmail.com.**

Col also welcomed Mark Bowditch, as Muswellbrook Shire Council's representative, and felt that it was excellent to have Mark on board the MAC CCC. Col thanked the company for organising the tour and Will for providing an overview of rehabilitation and the MacLean's Visual Edge to members whilst in the field.

ACTION 1: Thank you letter to be sent to Jenni Hayes from the MAC CCC.

5. Apologies; Advised and recorded.

6. Declaration of Pecuniary Interests;

Ongoing Declaration; Col advised that both he and Sarah are engaged by BHP Billiton to provide the respective roles of independent Chairperson and preparation of the meeting minutes. Alex advised that his father is Parliamentary Secretary for the Hunter. **Agreed by Members;** This Declaration is to be taken as a standing recording in the Meeting Minutes.

7. Approval of the previous Meeting's Minutes

It was confirmed that the Minutes from the meeting 13 December 2016 had been updated to "Endorsed by Chair" and re-circulated after the comments period close. Col asked if members had any further comments, no feedback was provided and these meeting minutes were approved.

8. Matters Arising from the previous Meeting – Action Items

ONGOING ACTION - By Invitation to a future CCC Meeting:-

MAC to invite representatives from the EPA to present on the Air Quality Monitoring Optimisation project.

ACTION 2: Chris to investigate whether one of the MAC Specialist Geologists could present on the depressurisation of coal seams at the next CCC meeting scheduled for 13 June 2017.

John felt it would be good to have both those presentations at future meetings, as dust and water concerns are big issues within the community.

Notice of Meeting Postponements; John would appreciate a reasonable time frame be allowed for any changes in either date and/or time to allow him the opportunity to schedule and/or re-schedule his business appointments accordingly. Chris apologised for the delay and advised this meeting had been postponed from 14 March due to his appointment being only a short time prior to that date, and that this additional time had been required for handovers and also to prepare correctly for both a fulsome meeting and site tour.

ACTION 3: Chris to respond to correspondence sent from John to Demus King (MAC) regarding meeting re-scheduling.

9. Update from BHP Billiton; Presentation to be distributed with the Meeting Minutes**OVERVIEW OF OPERATIONS**

Presentation by Will Ringland

Will provided the following data indicating actuals from January to March 2017, compared to the three months prior being October to December 2016, and also the January to March period for 2016.

	Last 3 months	Previous Quarter	Previous Year		
Production Information	Jan-Mar FY 17	Oct-Dec FY 17	Jan-Mar FY16	QTR-on-QTR Difference	Year-on-Year Difference
OB Movement (MBCM)	23.9	25.2	28.2	-5%	-15%
Coal Mined (MT)	8.3	6.9	7.8	20%	6%
Coal Uncovered (MT)	6.7	4.8	5.7	40%	18%
Product Coal MT)	4.6	3.8	4.1	21%	12%

Overburden Movement; There had been a reduction in overburden movement over the last quarter due to impacts from three significant rain events and also high wind, which resulted in the need to park up equipment due to wet conditions and pull up for dust.

Coal Mined, Coal Uncovered & Product Coal; Coal Mined remains on track and Product Coal is on average to what MAC is required to do each quarter to get their full year. MAC are working to keep downtime to a minimum.

Heat Map; Actuals - 3 Months; January to March 2017

MacLean's Visual Edge

Will identified the outside dump on the Heat Map that had been viewed on today's site tour and confirmed MAC's intentions were to keep a lot of dirt down amongst the big dumps i.e. in canals and pits. Will advised that the rain events did cause some issues with preparation and travelling equipment up to this top area. Will noted that haulage is kept pretty close in the pit and that MAC are working to get dirt to the outside edge and keep this front section in line with the dig.

MAC advised they are working hard to do the right thing by putting priority into this visual barrier on Denman Road but noted that works had also been impacted by windy dry days experienced during the summer southerly's and in these conditions, this is one area that gets parked up the quickest. On completion, MAC will then dump back out.

Dig (only) Progression Map EOFY17– EOFY18

Will acknowledged there had been a lot of development at the back end of the Pit with the filling of bulk dirt to create a void that through winter should provide a pretty good screen. MAC's Environmental Team are working on mapping and modelling for sound, as this has potential to travel more in the winter months and essentially the goal is to achieve a good dump area behind, with the buffer wall in front.

Mark enquired what the deepest point in the dig was and Will advised that area is right at the front and called "Hell Hole". To give a visual perspective Will advised today's tour stop point on Denman Road was at 160, the pit floor between is approximately 100 metres and the deepest point is in the negative 10's, about 200 metres below the tour stop point.

Mark asked if the top of the Pit will come across flat as MAC finish the visual bund. Will advised this will be at about the 360 mark in height and the plan is for natural rolls, curves and hills and hollows. The air flow and rotation of air around the humps and hollows is better than flat as wind tends to suck back in and should result in less dust in town.

Mark hopes this will keep dust contained as mining moves out and agreed the natural rotation and circulation should be better for community in relation to dust. Mark noted that dust is one of the main issues for community along with water and noise.

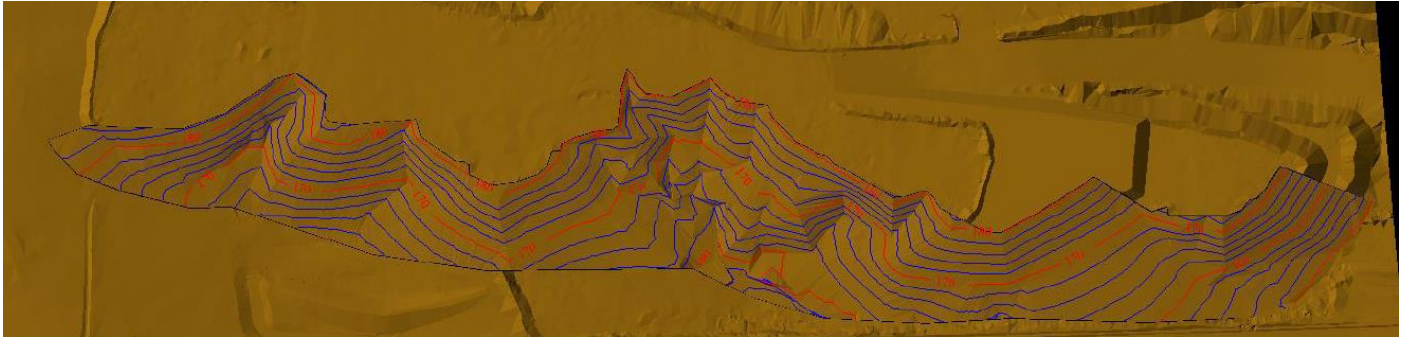
Mark felt that he will lose his view of Mount Arthur from his property when mining goes up about another 40 metres and John felt that the original height was to be 150 and now is 360 since the hill and progression over the last 6 years, John also acknowledged that there is then an extra bund on top for water flow.

Will advised that one of MAC's biggest objectives is to fill the tops of dumps and this cannot be done in summer due to the dry conditions and therefore has to be done in winter. Will noted that it is in winter that sound potentially travels and that MAC try to accommodate, as much as possible, to get these works done but with minimum impacts including stopping for any dust concerns.

Mark would like to see dams on the top and sides of hills to keep animals up at higher levels and Will noted that there is more water flow on the active side of the pit and that runs down to Hell Hole.

ENVIRONMENT; Presentation by Andrew Darnell**Environmental Management; FY17 Rehabilitation Update****Rehabilitation Update**

- ✚ Approximately 13.5 hectares of rehabilitation was completed at an area known as Dump 11.
- ✚ An additional 29 hectares is planned to be completed by the end of FY17. An area is currently being topsoiled adjacent to Denman Rd, known as VD5 which is intended to be completed in May-June 2017.
- ✚ This area is the first area to be rehabilitated with the Applied Geofluid design (mimic's natural surface and drainage lines) and will comprise of approximately 13 hectares of box-gum woodland rehabilitation.



Andrew advised that he was proud of the rehabilitation MAC has out in the field now and that rehabilitation sits with Jason, he felt that it was good to see it moving along as quickly as it did and the good results, especially so close to Denman Road. John agreed and felt that MAC had done a really good job. Andrew felt also that it had been a good procedure to see how rehabilitation is done and also how it can be done, he believed that now MAC had a starting point there would be further opportunity to get even better results moving forward.

Rehabilitation Strategy

In February 2017, the revised Rehabilitation Strategy was submitted to NSW Department of Planning and Environment (DPE) for review. The document was prepared in consultation with NSW Department of Industry – Division of Resources and Energy (DRE) and Muswellbrook Shire Council. The document is required under Project Approval 09_0062 (MOD1) and provides an overarching framework for the implementation and monitoring of rehabilitation on site.

DRE site visit

In January 2017, DRE attended site to inspect rehabilitation and associated land management practices. Several areas of the site were inspected including the cattle grazing trial, older areas of woodland rehabilitation that included the use of relocated habitat trees, recent rehabilitation and areas of topsoil stripping. No major issues or concerns were raised.

EPA site visit

In February 2017, the NSW Environment Protection Authority (EPA) attended site to inspect operational dust controls and verify the stabilisation of areas of exposed land. The visit included a detailed inspection of progressive rehabilitation, success of aerial seeding on overburden and the use of dust suppressants on major haul roads. Overall the EPA were satisfied with the controls in place and that actual disturbance was representative of the modelled predictions in the Environmental Assessment.

Six-monthly Spontaneous Combustion Report

In February 2017, Mt Arthur Coal submitted a six-monthly report on spontaneous combustion management for the period July to December 2016 to the EPA in accordance with Condition R4.3 of Environment Protection Licence 11457. During the July to December 2016 reporting period there was a 28 per cent increase in the area recorded as being affected by spontaneous combustion at Mt Arthur Coal. Approximately 1792 m² of land was treated for spontaneous combustion in the reporting period.

Environmental Performance

Elevated Environmental Monitoring Results

Groundwater level:-

- October and November 2016 – GW39P & GW2 – Groundwater level
- December 2016 and January 2017 – GW39P & GW2 – Groundwater level

Andrew explained that investigations were due to two level readings in a row (i.e. October & November and December & January) at monitoring locations GW39P & GW2 recorded results below the trigger level. Alex asked if the drop in groundwater level could also be partly attributed to a pretty dry summer and Andrew responded that the majority of bores would have a natural recharge in rain events and during dry conditions could possibly drop.

Air Quality:-

- 12/1/17 – DF05 – Roxburgh Road HVAS and DF06 – Sheppard Avenue HVAS
- 18/1/17 – DF06 – Sheppard Avenue HVAS
- 24/1/17 – DF06 – Sheppard Avenue HVAS
- 30/1/17 – DF06 – Sheppard Avenue HVAS
- 11/2/17 – DF05 – Roxburgh Road HVAS and DC09 – Wellbrook TEOM
- 12/2/17 – DC09 – Wellbrook TEOM, DC04 – South Muswellbrook TEOM and DC02 – Sheppard Avenue TEOM

An overview was provided for each of these dates, including assigning of the mines contribution when an appropriate wind direction was applicable, investigations and actions undertaken. It was noted that there had been significant impact from bushfires on 11 and 12 February, where there were many elevated readings due to this regional event. Mark advised that he is an Emergency Services spokesperson and provided some additional information on the St Ives fire which was the largest fire and that it had created its own storm cells including lightening strikes.

TEOM Data

John was pleased to see the TEOM data from Sheppard Avenue had been provided but felt that it had taken a long time for this information to be presented, particularly as he understood this was in MAC's Annual Environmental Monitoring Report (AEMR). Andrew responded that after discussions with John, there was a better understanding on what data John had been seeking and the matter of how this was to be conveyed. John advised he was impressed with the images and that they had answered his questions. Andrew advised he was happy to continue to liaise with John regarding monitoring data.

John would really like for MAC to continue to provide TEOM data as he continues to have concerns about Sheppard Avenue and noted this monitor DF06 had some high readings again in January. John would also like to see data from South Muswellbrook, as this monitor is located next to the School. John advised that the school notes how many people in attendance on a particular day have asthma and he feels this is a concern for both the community and mining.

John understands that not all dust can be attributed to MAC and feels that cumulative impacts are the big issue for community and therefore has also been seeking data from other mines. John had appreciated also getting PM2.5 data from MAC in the past. John feels that surrounding mines should meet with each other on the subject of cumulative air quality impacts, he would like to see the mining industry start to have a different attitude around this issue and to move forward from what he feels is 20 year old criteria.

Environmental Incidents

- Nil

COMPLAINTS; *Presentation by Chris*

Community Complaints - December 2016 to March 2017 = 42 in total

7 x Blast, 6 x Lighting, 18 x Dust and 11 x Noise.

Chris explained that complaints had been slightly elevated through January as a result of dry weather conditions and therefore potential for more dust and reiterated that fires had a large impact on air quality. Chris confirmed that all complaints are dealt with immediately via investigation and response to the complainant advising of the result. MAC's statutory OCE's are very in tune to any complaints that may be received at night, particularly with lighting and noise, resulting in equipment being adjusted and/or moved. Chris anticipated the April Complaints Summary would be made publically available around 7 May via upload to MAC'S online portal.

Lighting Concerns

Andrew advised that lighting had been turned off, redirected, adjusted and/or repositioned in response to feedback from the Community Response Line. Mark felt that in January and February it seemed some concerns were for lighting going in the same direction and wondered if lighting problems may come with a change in OCE shifts. Mark asked if it may be worth analysing if there were any roster changes around the same time that the lighting concerns were voiced. Mark felt this may offer an opportunity to look at the circumstances behind the issue and potentially locate the cause of a lighting concern that continues to come through to the same area.

Andrew confirmed there are site communications and training packages where lighting should not be placed and if there may potentially be a margin of error where a concern cannot be identified until lighting has been set up, the OCE's will go and do visual inspections and alleviate any lighting impacts beforehand.

Mark wondered if there would be value in incorporating some checks and measures into procedure documents such as Safe Operating Procedures (S.O.P's) i.e. when in a particular area or height lighting is to be positioned in a certain way and direction. Also if there is some potential to use data from where a complaint came from in a Job Hazard Analysis (J.H.A) i.e. to identify for example; that lighting is not to be put on this level but alright on a different level. That way if OCE's were to go through these procedures it may be less likely for lighting to cause concern to the community.

Andrew advised that projects are continually moving in and around the pit and therefore lighting must be continually assessed, he acknowledged the higher elevation, the identification of problem areas and confirmed that these are both definitely taken into account by MAC. Andrew advised the OCE's produce a report on what has been done, along with a summary of controls and identification of areas that will go to the new shift coming on and confirmed that this detail is definitely communicated.

Andrew advised that along with the checks and measures that MAC have in place for setting up lighting plants, the best way to alleviate any lighting concerns quickly is for the community to phone in and convey as much detail as possible. Andrew provided the example of MAC flicking lights on and off whilst talking to a community member to ascertain the light source that had been causing a concern.

Mark would like to see a focus on lighting and any concerns fixed for the community, in addition he suggested that some tall trees on the sides of the operation may also provide some visual relief. John felt that the lighting concerns from Muswellbrook and Roxburgh Road may be a result of lights being located on the MacLean's visual dump that may be above the horizon and it was John's understanding that lighting was to be put back into the mine. Chris confirmed that LED lighting is preferable as it tends to be more specific.

ACTION 4 : Chris to check if LED lighting is being utilised in areas where there have been lighting concerns.

Community Support

- ✚ Support to Muswellbrook Men's Shed through Local Buying Program to build habitat nesting boxes plus sponsorship of the Shed
- ✚ Sponsorship of Hunter Valley Group 21 Rugby League competition
- ✚ Contribution to the Graham 'Polly' Farmer Foundation Steering Committee meeting

Coming up

- ✚ Sponsors of and guests at Outstanding Business Awards Nights for Muswellbrook and Singleton Chambers of Commerce.
- ✚ Continued support of Upper Hunter Wine and Food Affair.
- ✚ Renewal of Upper Hunter Community Services partnership.
- ✚ Preparing to launch the Local Buying **Foundation** in NSW. Grants to support business capacity building.

12. GENERAL BUSINESS; Community Feedback

John Bancroft

John queried if MAC had a Finance Committee and advised that he would be interested in detail on the value of funding that MAC has provided and/or reported to Council. There was a general discussion around the Voluntary Planning Agreement (V.P.A.) and it was confirmed that this funding is allocated by Council. Mark advised that Community along with local Aboriginal Lands Council do have opportunity to provide their input into the V.P.A.

John expressed an interest for MAC to keep the CCC up to date with their engagement with Council in relation to topics that may be pertinent to this forum and also hoped to see the mine involving this committee again in discussions around matters such as what the mine is planning to do e.g. the Mining Operations Plan (MOP) so the CCC may have some opportunity to contribute or provide their feedback on these.

Andrew advised the MOP is a five year plan, so discussions, once the MOP is approved by DRE, around this could offer the opportunity for MAC to provide some detail to the CCC, for example; on what is planned for one year and then three years as part of the five years. Col asked the company to look for opportunities at forthcoming meetings to assist John with these areas of interest.

Mark Bowditch

Mark acknowledged the push to local business via MAC's Local Buy Program and was interested to know how many members of the local area get a start with MAC and continue on to get a job, in particular how many may be from Muswellbrook. Mark feels there is concern about MAC not employing locals and talk around the company engaging a number of "bedsitters" i.e. people that live out of the area but come in to share a house and then leave again when their work is complete. Mark feels that if MAC can show they are employing local recruits then that would give the CCC an opportunity to say BHP are doing the right thing and these are the local people that are employed. Mark confirmed that his interest was around new people coming on board. Andrew responded that MAC seeks to utilise local employees and contractors as much as practicable and where this is not possible in accordance with MAC's Fatigue Policy, employees are preferred to live less than one hour from site, and if they do live outside this one hour footprint there is a requirement to have travel plans in place.

Chris agreed this is good topic for community to talk about and a worthy area for engagement. Mark said he is most concerned about fatigue issues and would not like family travelling home from work when there may be other drivers on the road who may potentially be tired.

ACTION 5 : MAC to provide some detail on the towns where New Starters and Apprentices are located, in particular numbers of those who live within the Muswellbrook Council footprint.

OVERVIEW OF FY 18 EXPLORATION ACTIVITIES; *Presentation by Duane Uren*

Members were provided with a map of Mount Arthur Mine outlining the leases where the company can operate. Chris introduced Duane, a member of MAC's Exploration Team, who provided an overview of where and when exploration activities will be undertaken and the number of holes in each location via this map. Duane advised that these drilling works will be conducted over May and June, between the hours of 7 a.m. and 6 p.m, and the drilling does not hit water. This exploration work utilises receivers to pick up data that provides MAC with information on what is occurring in the seams and to ascertain the quality of the resource in those areas. Duane or a colleague will continue to update the CCC on various activities in the future.

13. Date & Time of next Meeting - TUESDAY 13 JUNE 2017 - At Mt Arthur Coal

MAC CCC: 1.00 p.m. to 2.00 p.m.

DRAYTON & MT ARTHUR COAL: 2.00 p.m. to 2.30 p.m.

ACTIONS ARISING FROM THIS MEETING

ACTION 1: Thank you letter to be sent to Jenni Hayes from the MAC CCC.

ACTION 2: Chris to investigate whether one of their Specialist Geologists could present on the depressurisation of coal seams at the next CCC meeting scheduled for 13 June 2017.

ACTION 3: Chris to respond to correspondence sent from John to Demus regarding meeting re-scheduling.

ACTION 4 : Chris to check if LED lighting is being utilised in areas where there have been lighting concerns.

ACTION 5 : MAC to provide some detail on the towns where New Starters and Apprentices are located, in particular numbers of those who live within the Muswellbrook Council footprint.

ONGOING ACTIONS

Col & Chris to liaise regarding advertising the two vacant Community positions. CCC to ask other community members to get in touch with Col if they are interested in joining this Committee.

MAC to invite representatives from the EPA to present on the Air Quality Monitoring Optimisation project.