

MT ARTHUR MINE COMPLEX
COMMUNITY CONSULTATIVE COMMITTEE MEETING AGENDA

2:00pm Wednesday 8 October 2014

Mt Arthur Coal Boardroom

Time (PM)		Agenda item	Responsibility
2:00	1	Housekeeping and safety	Deirdra McCracken-Tindale
2:03	2	Declaration of pecuniary interest	Chairperson
2:05	3	Confirmation of previous meeting minutes	Chairperson
2:08	4	Action points since last meeting	Chairperson
2:20	5	Overview of operations	John Hamson
2:40	6	Overview of proposed Mining Operations Plan 2015-19	Michael Gale
3:00	7	Overview of environment / Environmental monitoring data	Sarah Parton
3:15	8	Discussion about independent chairperson appointment / minute taker for the CCC	Scott Brooks, Department of Planning and Environment
3:35	9	Overview of community support	Deirdra McCracken-Tindale
3:40	10	Community complaints	Chairperson
3:45	11	General business	Chairperson
3:58	12	Next meeting date	Chairperson
4:00	13	Meeting close	Chairperson

Mt Arthur Coal Community Consultative Committee Report October 2014

Agenda Item 4 - Action points since last meeting (August 2014)

ACTION ITEM NO.	ITEM	ACTIONED BY
1	Discuss whether pollution gear on heavy vehicles can be discussed at the next Mine Managers Forum with MSC Mayor	CP
2	Mt Arthur Coal will endeavour to provide correlation between DF06 results and Bengalla Mine's closest monitor	Bengalla has requested that the discussion be deferred to the Mine Managers Forum. CP to follow up.
3	Mt Arthur Coal to request the attendance of a Department of Planning representative at the next meeting to discuss the issue of an Independent Chairperson	AG
4	Mt Arthur Coal to confirm source of material for the visual bund along Denman Road	Response provided in section 5 of previous meeting's minutes
5	Mt Arthur Coal to provide additional information about rehabilitation planning	Response provided in section 5 of previous meeting's minutes
6	Mt Arthur Coal to confirm whether a camera is used to monitor dust	Response provided in section 5 of previous meeting's minutes
7	AG to discuss BM's resignation with him prior to the next committee meeting where the resignation will be discussed	AG

Agenda Item 5 - Overview of Operations (July - August 2014)

- The total number of people employed at Mt Arthur Coal (employees and contractors) was 1,713 at the end of August 2014.
- Overview of operations to be provided by John Hamson.

Agenda Item 7 - Overview of Environment (July - August 2014)

- Department of Planning and Environment rolled out dust awareness training to production supervisors during August.
- To satisfy EPL11457 conditions U1.3, U2.3 and U3.1, the following reports were submitted to the Environment Protection Authority:
 - U1 - Particulate Matter Control Best Practice Implementation Report – Wheel Generated Dust
 - U2 - Particulate Matter Control Best Practice Implementation Report – Disturbing and Handling Overburden Under Adverse Weather Conditions
 - U3 - Particulate Matter Control Best Practice Measures for Disturbing and Handling Overburden
- The following incidents related to monitoring results occurred at Mt Arthur Coal during July and August and Mt Arthur Coal notified the relevant authorities accordingly:
 - An elevated HVAS result was recorded at the Sheppard Avenue monitor in July. Investigations revealed Mt Arthur Coal's contribution to this elevated result was below statutory limits. Mt Arthur Coal also recorded elevated annual average PM₁₀ results at the same monitor, with results calculated to exceed the annual average of 30 µg/m³ on two occasions in July. This includes an extremely high 24-hour result of 128 µg/m³ on 23 December 2013 when the wind was not from the direction of the Mt Arthur Coal mine on that day at all.

Agenda Item 8 - Environmental Monitoring Data (July - August 2014)

This monitoring data is provided for your reference prior to the meeting. Exceedances or elevated results since the last meeting will be discussed by exception only.

Monitoring locations are shown in Appendix 1.

1. Blasting Data (Jul - Aug 2014)

Blasting Criteria:

Blast Impact Assessment Criteria			
10. The Proponent shall ensure that blasts on site do not cause exceedances of the criteria in Table 8.			
<i>Table 8: Blasting impact assessment criteria</i>			
Location	Airblast overpressure (dB(Lin Peak))	Ground vibration (mm/s)	Allowable exceedance
Residence on privately owned land	120	10	0%
	115	5	5% of the total number of blasts over a period of 12 months
Heritage sites, including Edinglassie and Rous Lench	133	10	0%

Blasting Summary:

- There were no road closures in July and August.
- There were 31 blast events in July and August.
- 3 blasts were delayed in July and August due to unfavourable weather conditions.
- There were no reportable blast fume events, elevated blast vibration or blast overpressure noise results in July or August.

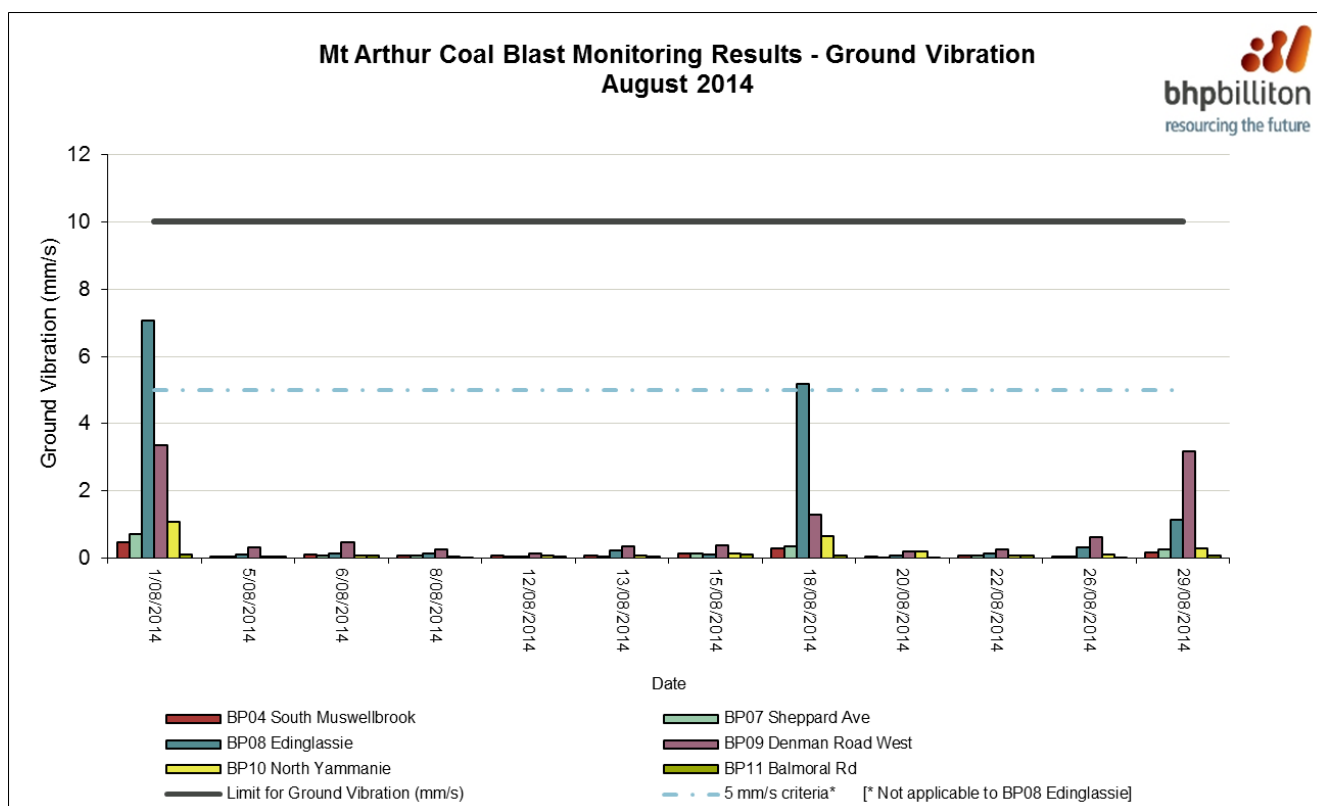
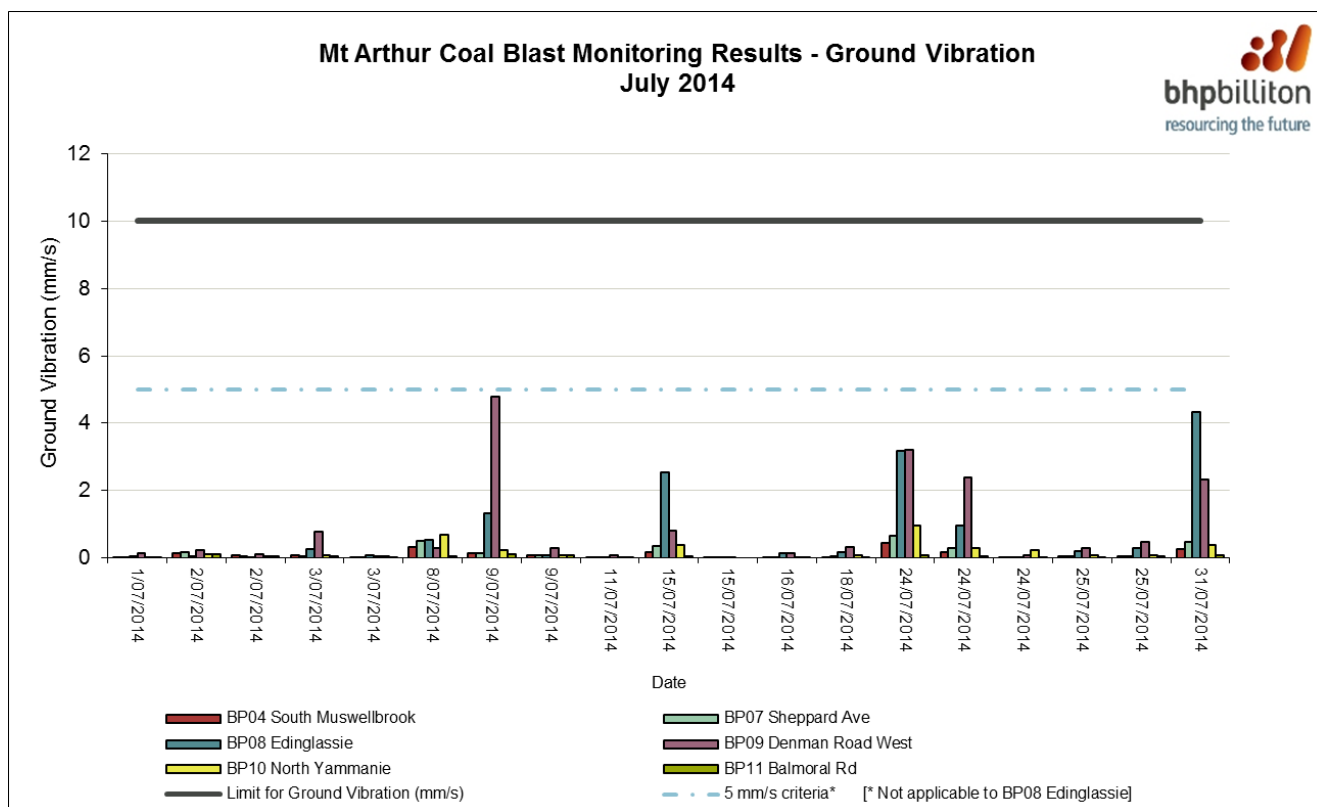
Blast Monitor Data Capture Rates:

	South Muswellbrook	Sheppard Avenue	Edinglassie	Denman Road West	North Yammanie [^]	Balmoral Road [^]
Site ID	BP04	BP07	BP08	BP09	BP10	BP11
Jul-14	100%	100%	100%	100%	100%	100%
Aug-14	100%	100%	100%	100%	100%	100%

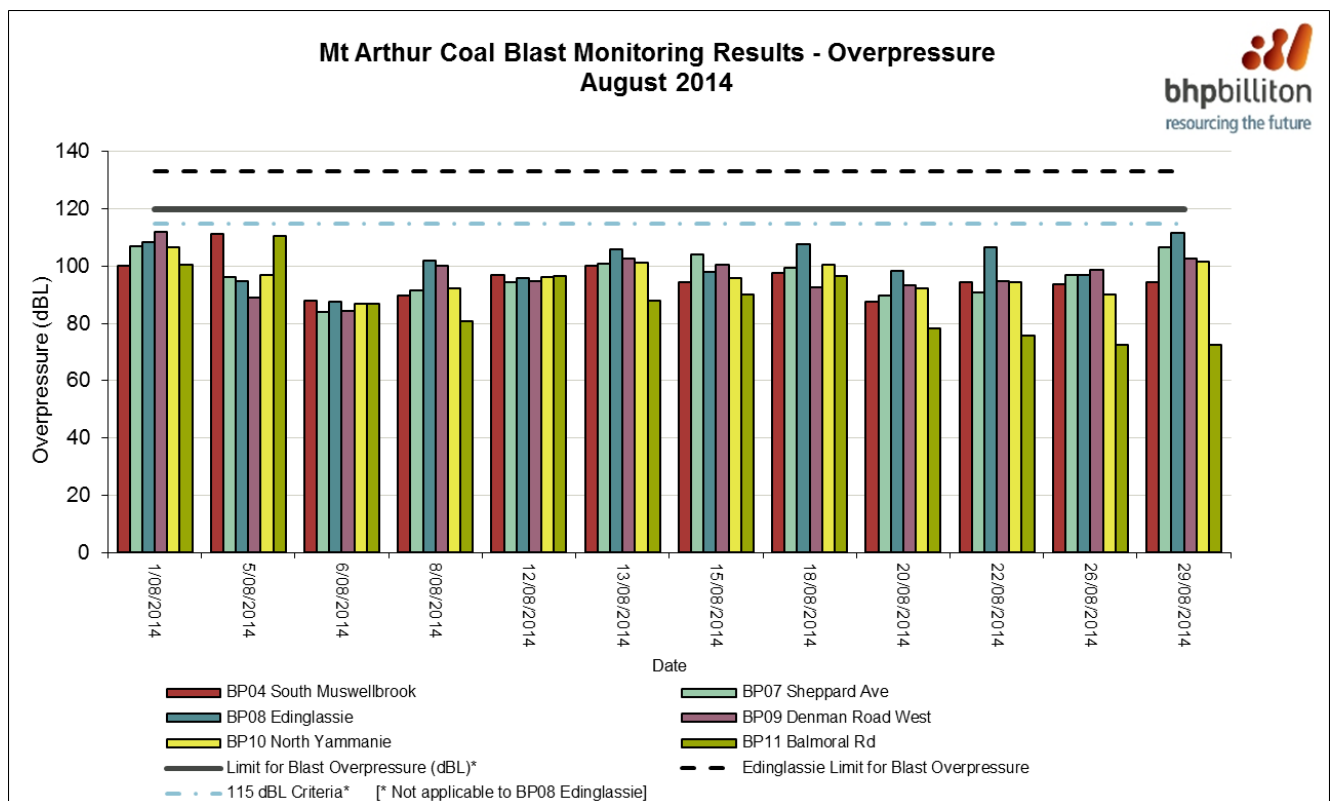
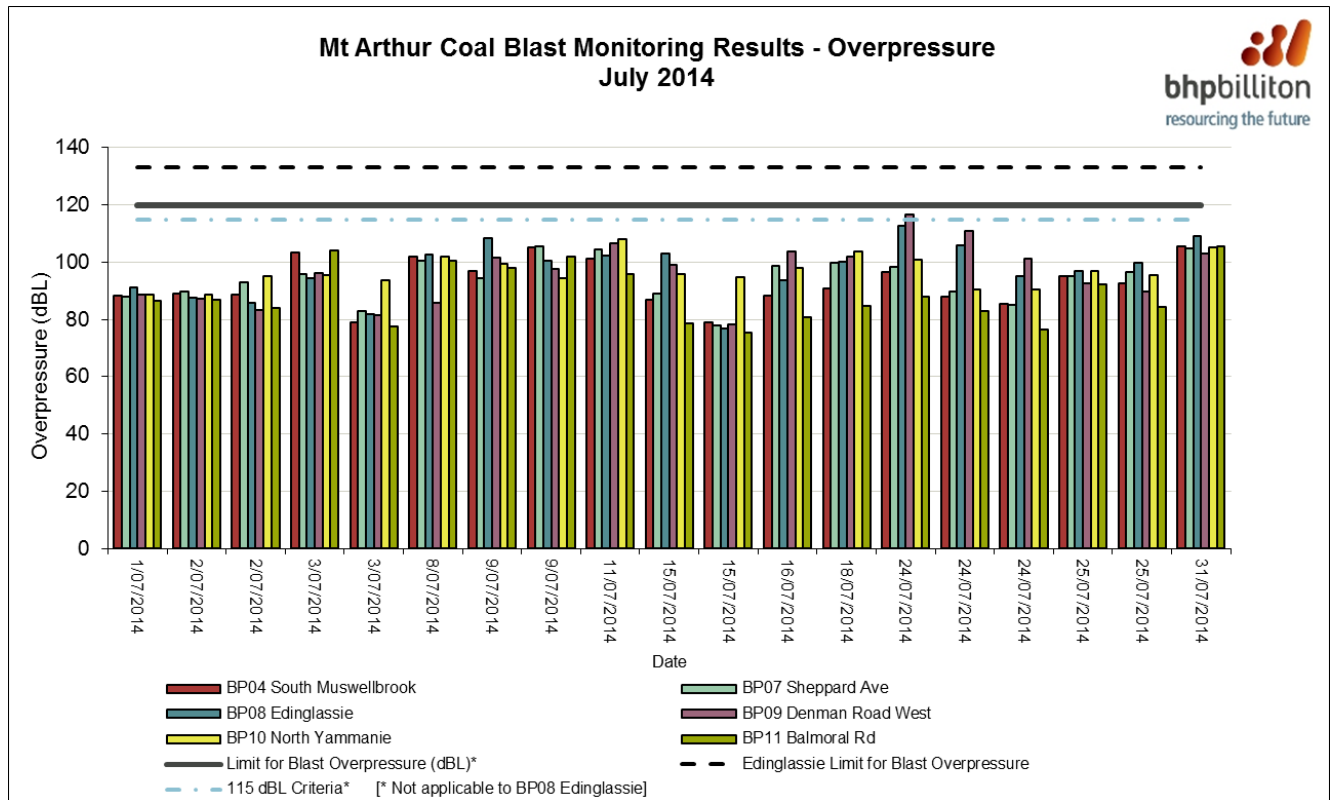
[^] New blast monitors installed in June 2014.

Note: The data capture rate is the percentage of the total number of blasts for which blast monitoring results were obtained.

Ground Vibration:



Airblast Overpressure:



2. High Volume Air Sampling (HVAS) Data (Jul - Aug 2014)

HVAS Criteria:

Impact Assessment Criteria			
20.	The Proponent shall ensure that the dust emissions generated by the Mt Arthur mine complex do not cause additional exceedances of the air quality impact assessment criteria listed in Tables 9, 10 and 11 at any residence on privately owned land, or on more than 25 percent of any privately owned land, except where such exceedance is predicted in the EA. For these properties, the Proponent shall comply with the air quality predictions in the EA.		
<i>Table 9: Long term impact assessment criteria for particulate matter</i>			
Pollutant	Averaging period	Criterion	Basis
Total suspended particulate (TSP) matter	Annual	90 µg/m ³	Total ¹
Particulate matter < 10 µm (PM ₁₀)	Annual	30 µg/m ³	Total ¹
<i>Table 10: Short term impact assessment criterion for particulate matter</i>			
Pollutant	Averaging period	Criterion	Basis
Particulate matter < 10 µm (PM ₁₀)	24 hour	50 µg/m ³	Total ¹

HVAS Summary:

- Mt Arthur Coal has three statutory HVAS monitors.
- All statutory HVAS monitoring locations currently have annual averages below relevant regulatory criteria, except for DF06 (Sheppard Avenue), as detailed in the elevated results table below.
- All statutory HVAS annual averages were below relevant regulatory criteria.
- The following elevated results were recorded during July and August:

Date	Site	Elevated PM₁₀ result (µg/m³)	Mt Arthur Coal's contribution (µg/m³)	Exceedance investigation results
21/07/2014	Sheppard Avenue	Annual Average: 30.1	Annual Average: 23.2*	This monitor is located near Muswellbrook Racecourse to the north-north-east of the operation. An investigation has revealed that if only Mt Arthur Coal's calculated contribution was used on the occasions when the 24-hour result recorded at DF06 exceeded the 24-hour limit of 50 µg/m ³ , then the adjusted rolling annual average is calculated to be less than the impact assessment criteria of 30 µg/m ³ . Elevated results at DF06 are often impacted by other sources. The recorded annual average of 30.1 includes an extremely high 24-hour result of 128 µg/m ³ on 23 December 2013 when the wind was not from the direction of Mt Arthur Coal.

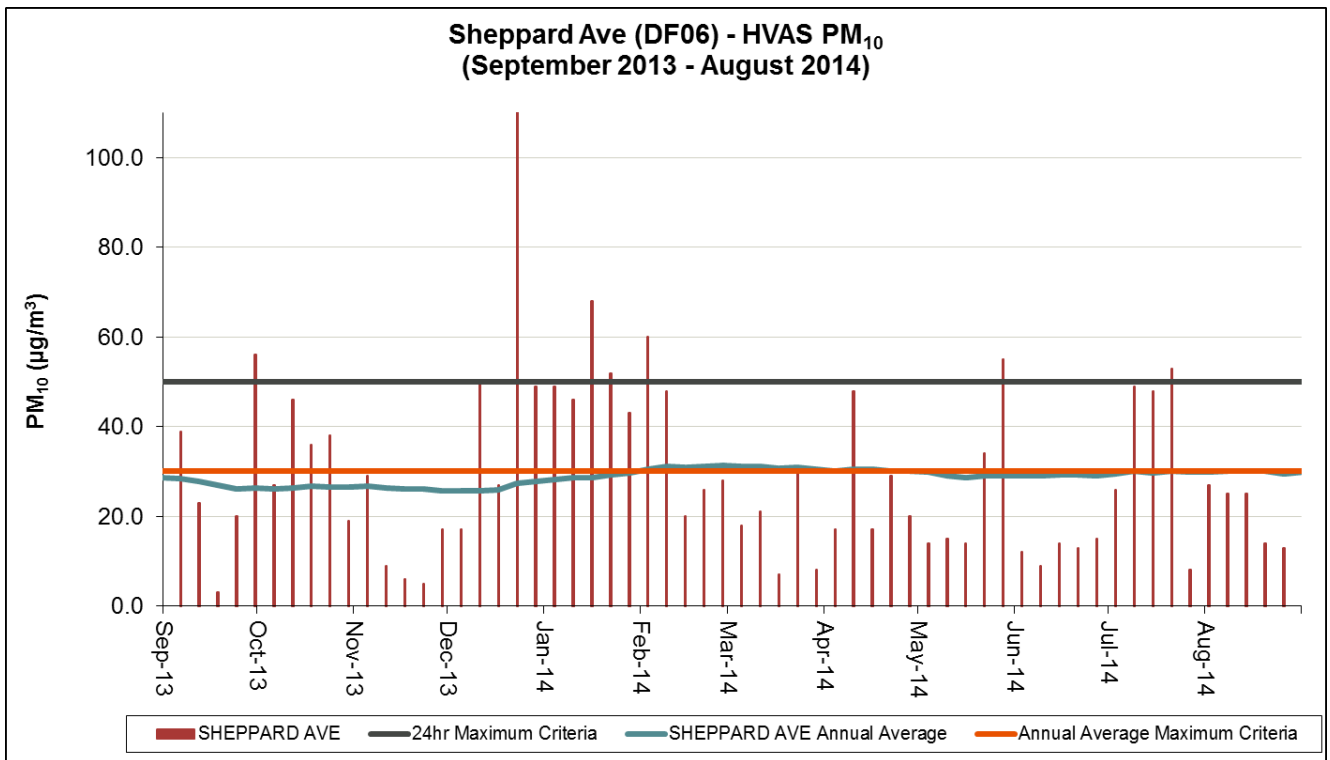
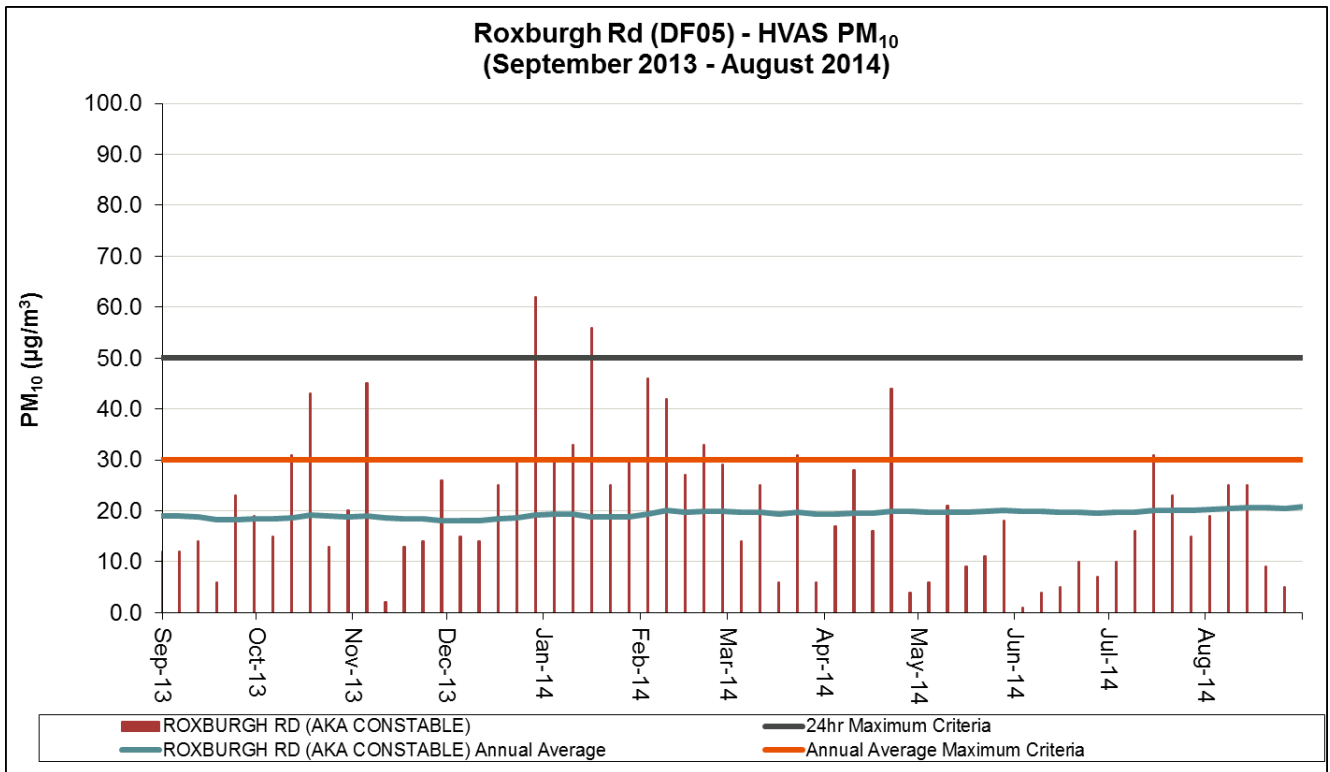
Date	Site	Elevated PM ₁₀ result (µg/m ³)	Mt Arthur Coal's contribution (µg/m ³)	Exceedance investigation results
08/08/14	Sheppard Avenue	Annual Average: 30.1	Annual Average: 23.2*	This monitor is located near Muswellbrook Racecourse to the north-north-east of the operation. An investigation has revealed that if only Mt Arthur Coal's calculated contribution was used on the occasions when the 24-hour result recorded at DF06 exceeded the 24-hour limit of 50 µg/m ³ , then the adjusted rolling annual average is calculated to be less than the impact assessment criteria of 30 µg/m ³ . Elevated results at DF06 are often impacted by other sources. This result includes an extremely high 24-hour result of 128 µg/m ³ on 23 December 2013 when the wind was not from the direction of Mt Arthur Coal.
14/08/14	Sheppard Avenue	Annual Average: 30.1	Annual Average: 23.3*	This monitor is located near Muswellbrook Racecourse to the north-north-east of the operation. An investigation has revealed that if only Mt Arthur Coal's calculated contribution was used on the occasions when the 24-hour result recorded at DF06 exceeded the 24-hour limit of 50 µg/m ³ , then the adjusted rolling annual average is calculated to be less than the impact assessment criteria of 30 µg/m ³ . Elevated results at DF06 are often impacted by other sources. This result includes an extremely high 24-hour result of 128 µg/m ³ on 23 December 2013 when the wind was not from the direction of Mt Arthur Coal.
21/07/14	Sheppard Avenue	53.0	8.8	This monitor is located near Muswellbrook Racecourse to the north-north-east of the operation. Wind direction was predominately from the south-east to east-south-east on this day. During approximately 16.67 per cent of the day this monitor was located downwind of Mt Arthur Coal's operations. The investigation has revealed that Mt Arthur Coal's contribution was less than the 24-hour impact assessment criteria of 50 µg/m ³ .

* Annual average reported in the Mt Arthur Coal's contribution column uses Mt Arthur Coal's contribution only on days where the PM₁₀ levels exceeded the criteria of 50 µg/m³ and not every result.

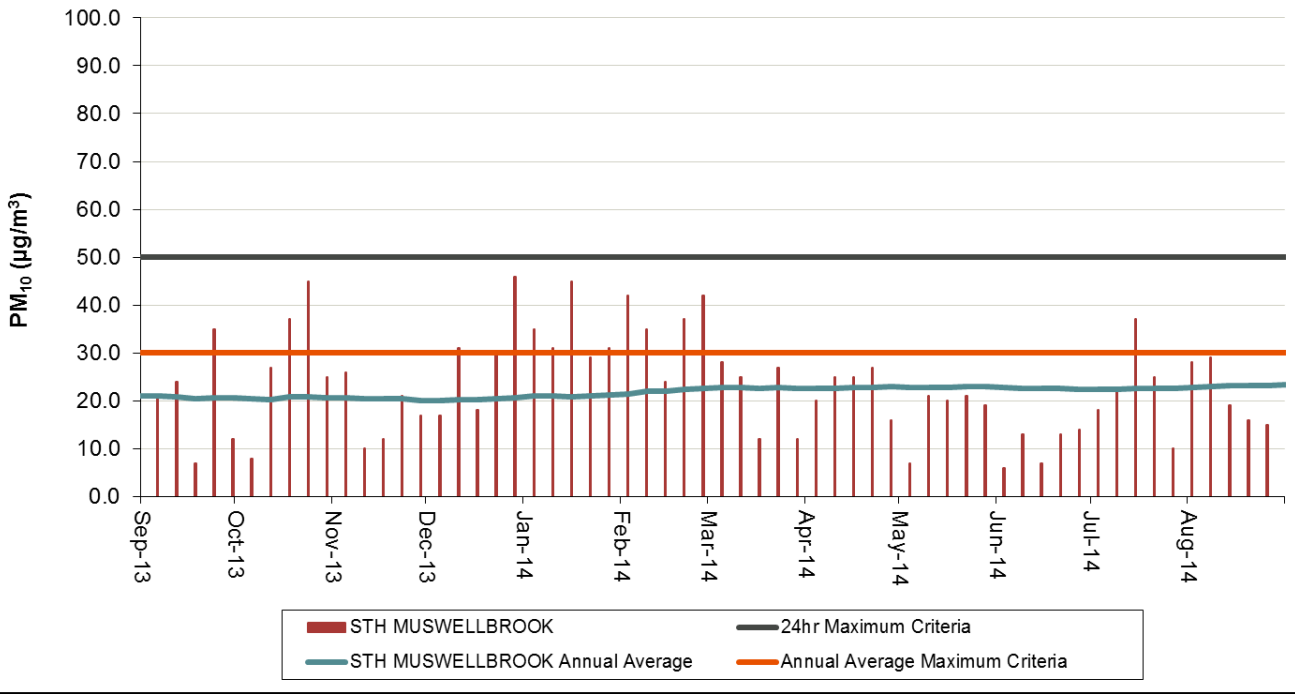
HVAS Data Capture Rates:

	Roxburgh Road (Constable)	Sheppard Avenue	South Muswellbrook
Site ID	DF05	DF06	DF07
Jul-14	100%	100%	100%
Aug-14	100%	100%	100%

HVAS PM₁₀:



South Muswellbrook (DF07) - HVAS PM₁₀
(September 2013 - August 2014)



3. Real-time Air Quality Monitoring Data (Jul - Aug 2014)

Real-time Air Quality Monitoring Criteria:

Impact Assessment Criteria			
20. The Proponent shall ensure that the dust emissions generated by the Mt Arthur mine complex do not cause additional exceedances of the air quality impact assessment criteria listed in Tables 9, 10 and 11 at any residence on privately owned land, or on more than 25 percent of any privately owned land, except where such exceedance is predicted in the EA. For these properties, the Proponent shall comply with the air quality predictions in the EA.			
<i>Table 9: Long term impact assessment criteria for particulate matter</i>			
Pollutant	Averaging period	Criterion	Basis
Total suspended particulate (TSP) matter	Annual	90 µg/m ³	Total ¹
Particulate matter < 10 µm (PM ₁₀)	Annual	30 µg/m ³	Total ¹
<i>Table 10: Short term impact assessment criterion for particulate matter</i>			
Pollutant	Averaging period	Criterion	Basis
Particulate matter < 10 µm (PM ₁₀)	24 hour	50 µg/m ³	Total ¹

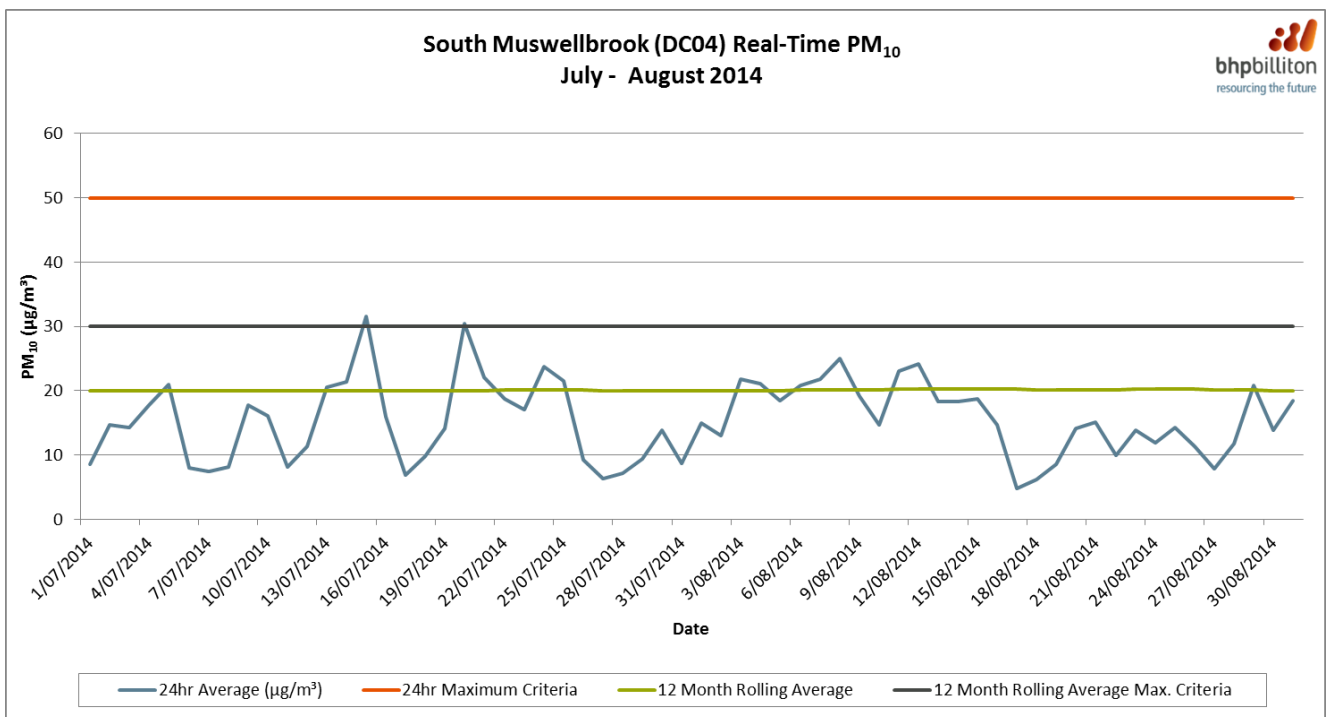
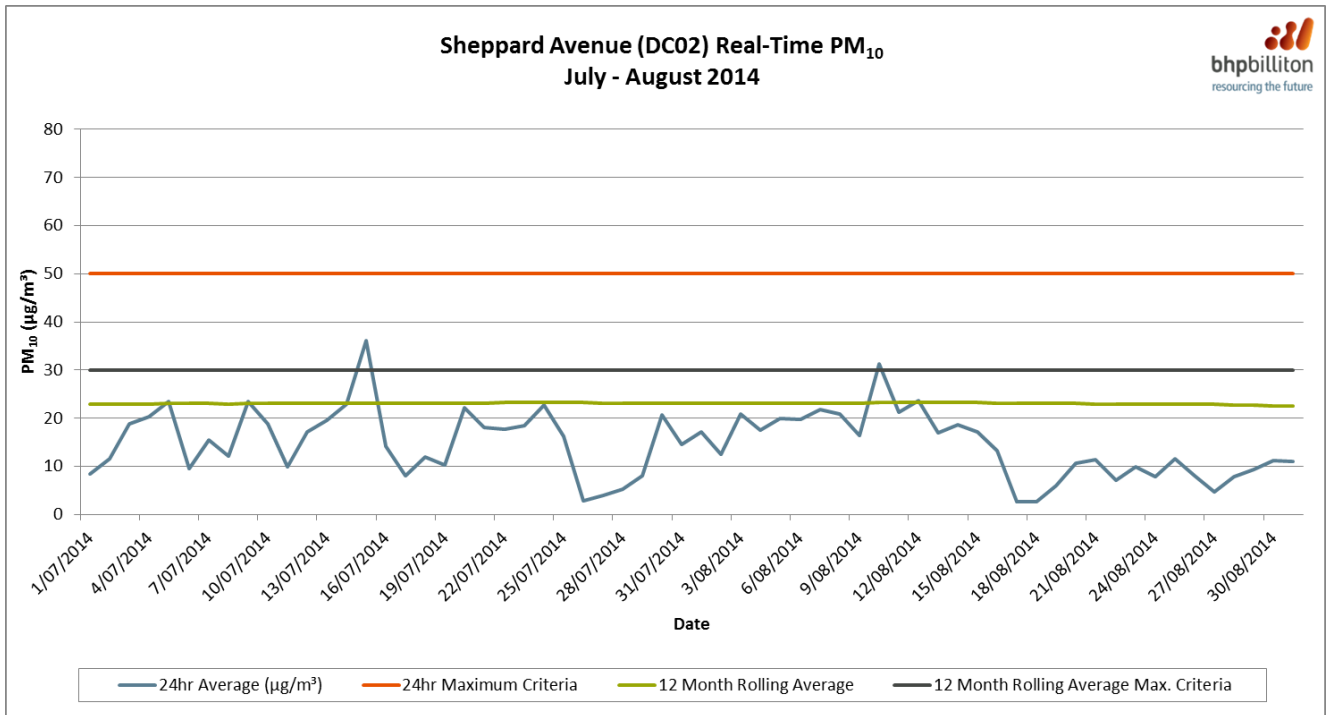
Real-time Air Quality Monitoring Summary:

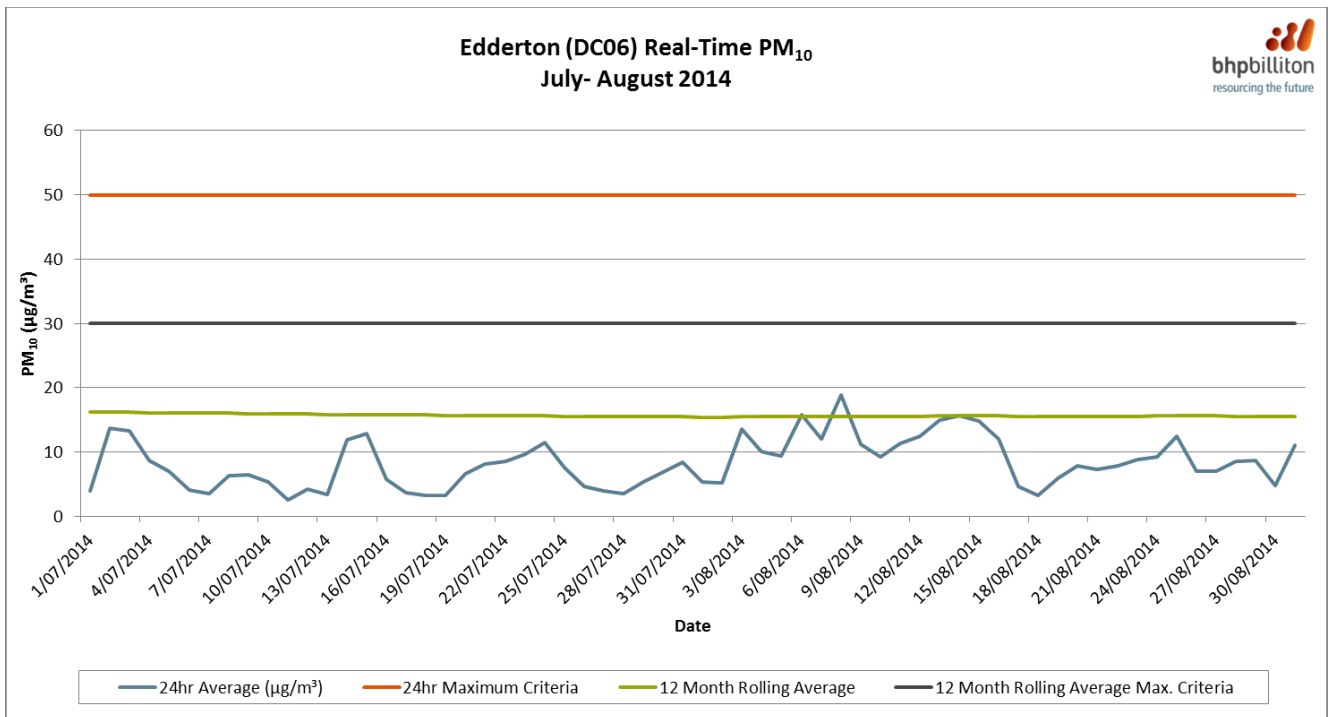
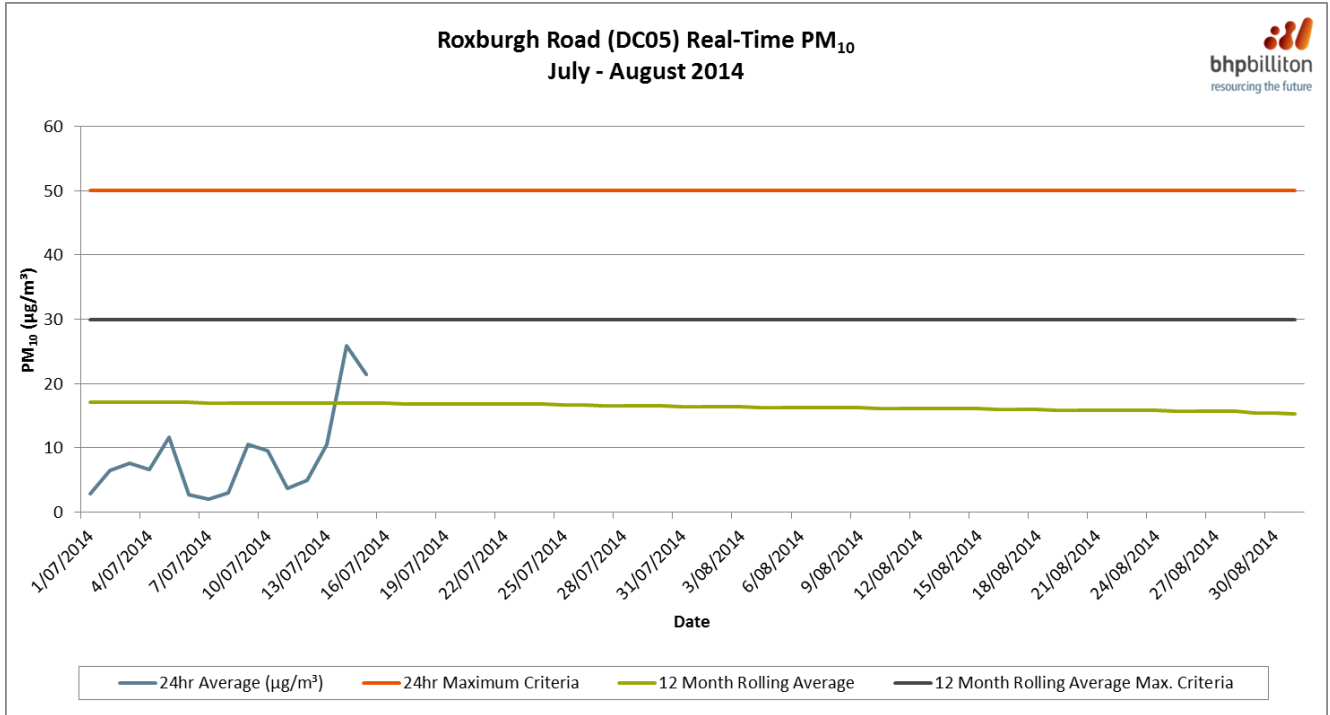
- The real-time air quality monitors used by Mt Arthur Coal are called Tapered Element Oscillating Microbalances (TEOMs).
- Mt Arthur Coal has six statutory TEOMs.
- All statutory real-time air quality monitors currently have annual averages below regulatory criteria.
- At monitoring site DC09 (Wellbrook) sufficient data was collected to provide the 12 month rolling average trend line from this reporting period onward.
- At DC05 the temperature/humidity sensors were damaged resulting in lower TEOMs capture rates for the reporting period. This will be fixed by the next reporting period.
- There were no elevated results recorded during July and August:

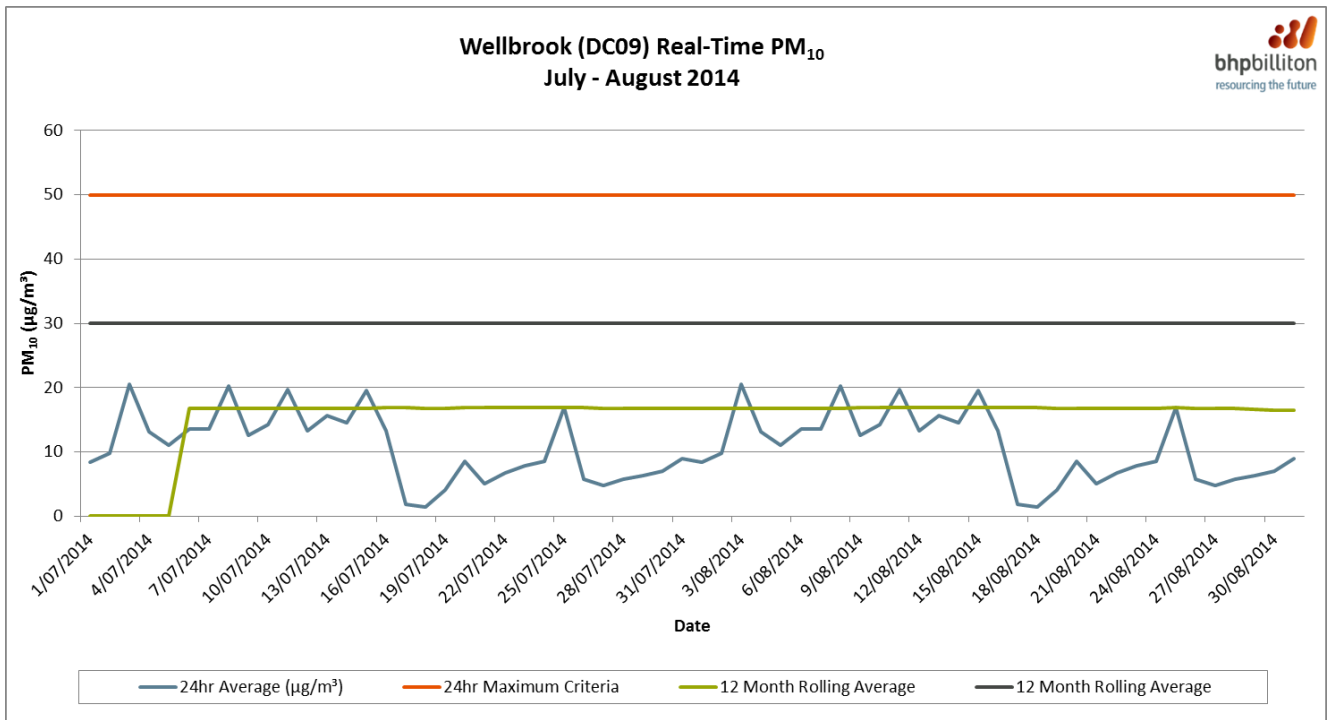
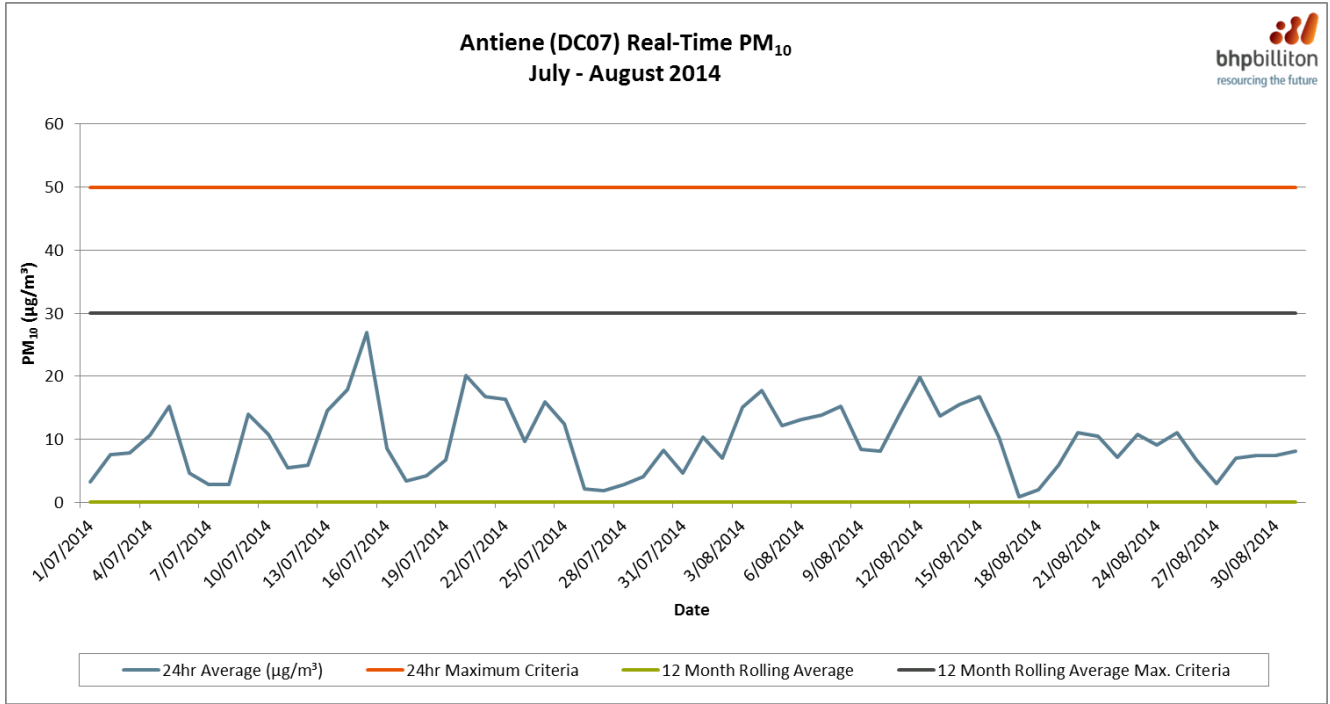
Real-time Air Quality Monitoring Data Capture Rates:

	Sheppard Avenue	South Muswellbrook	Roxburgh Road	Edderton Homestead	Antiene	Wellbrook
Site ID	DC02	DC04	DC05	DC06	DC07	DC09
Jul-14	100%	100%	53%	100%	100%	100%
Aug-14	100%	100%	0%	100%	100%	100%

TEOM PM₁₀:







4. Depositional Dust Data (Jul - Aug 2014)

Depositional Dust Criteria:

Table 11: Long term impact assessment criteria for deposited dust

Pollutant	Averaging period	Maximum increase² in deposited dust level	Maximum total¹ deposited dust level
Deposited dust	Annual	2 g/m ² /month	4 g/m ² /month

¹ Background concentrations due to all other sources plus the incremental increase in concentrations due to the mine complex alone.
² Incremental increase in concentrations due to the mine complex alone.

Note: Deposited dust is assessed as insoluble solids as defined by Standards Australia, AS/NZS 3580.10.1:2003: Methods for Sampling and Analysis of Ambient Air - Determination of Particulate Matter - Deposited Matter - Gravimetric Method.

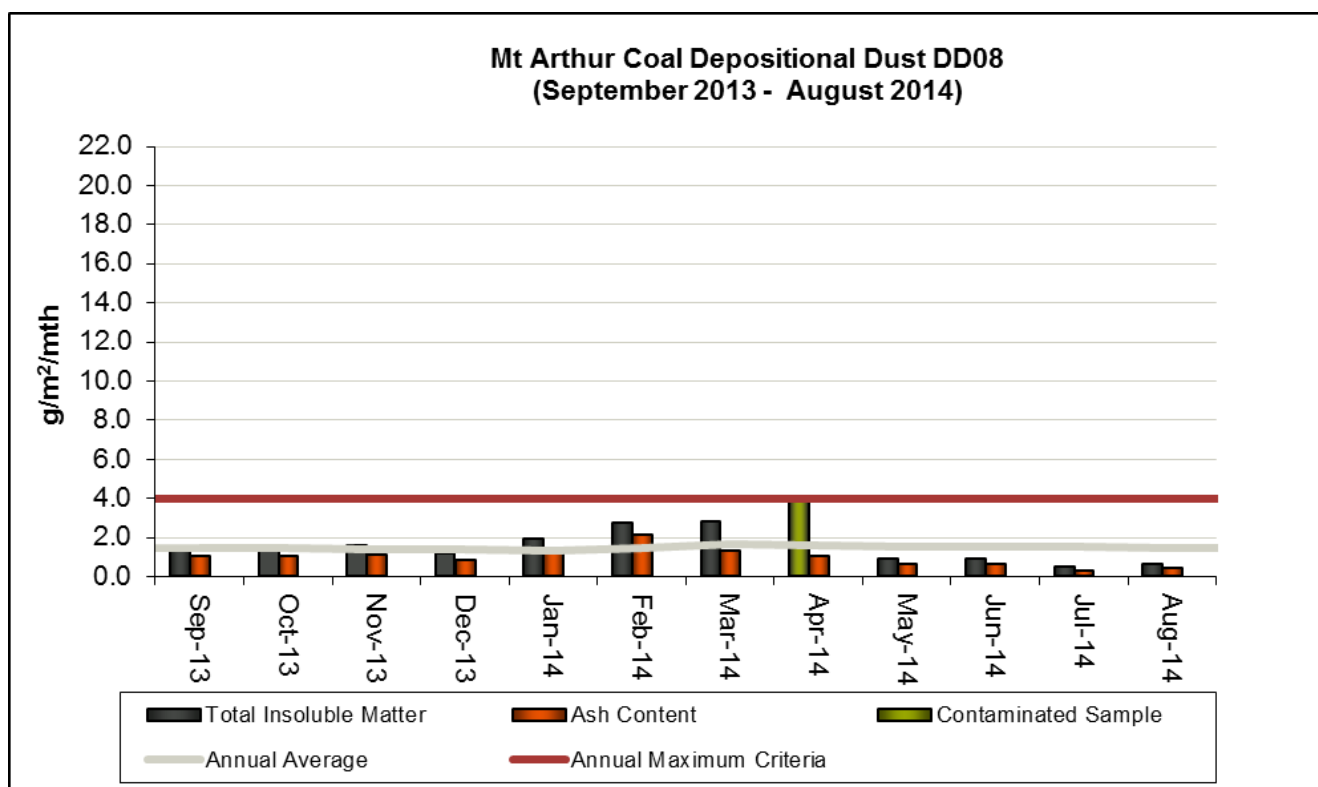
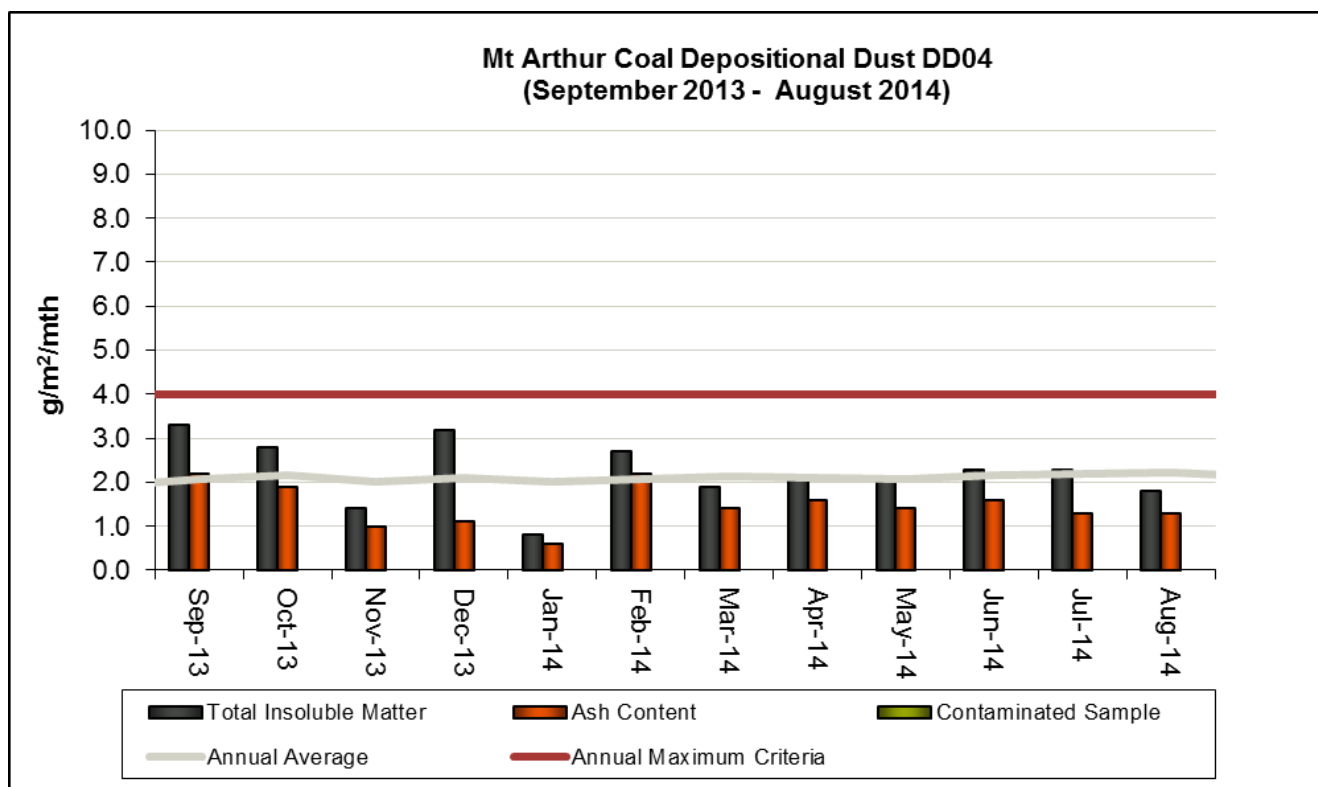
Depositional Dust Summary:

- Mt Arthur Coal's air quality monitoring network contains 13 depositional dust gauges, which includes six statutory monitors, as listed in the table below and discussed in this section.
- All annual rolling averages were below relevant regulatory criteria at the statutory gauges.
- There were no contaminated depositional dust results in July or August.

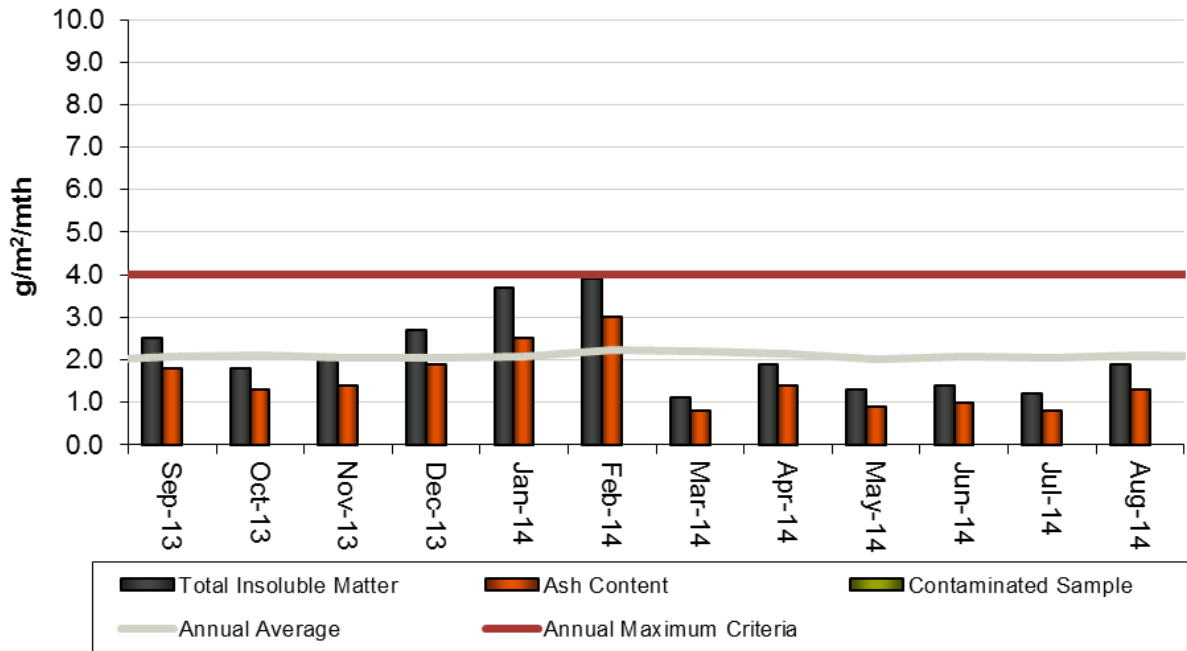
Depositional Dust Data Capture Rates:

	Antiene	Edderton Homestead	Roxburgh Road	Denman Road West	Sheppard Avenue	South Muswellbrook
Site ID	DD04	DD08	DD14	DD15	DD19	DD21
May-14	100%	100%	100%	100%	100%	100%
Jun-14	100%	100%	100%	100%	100%	100%

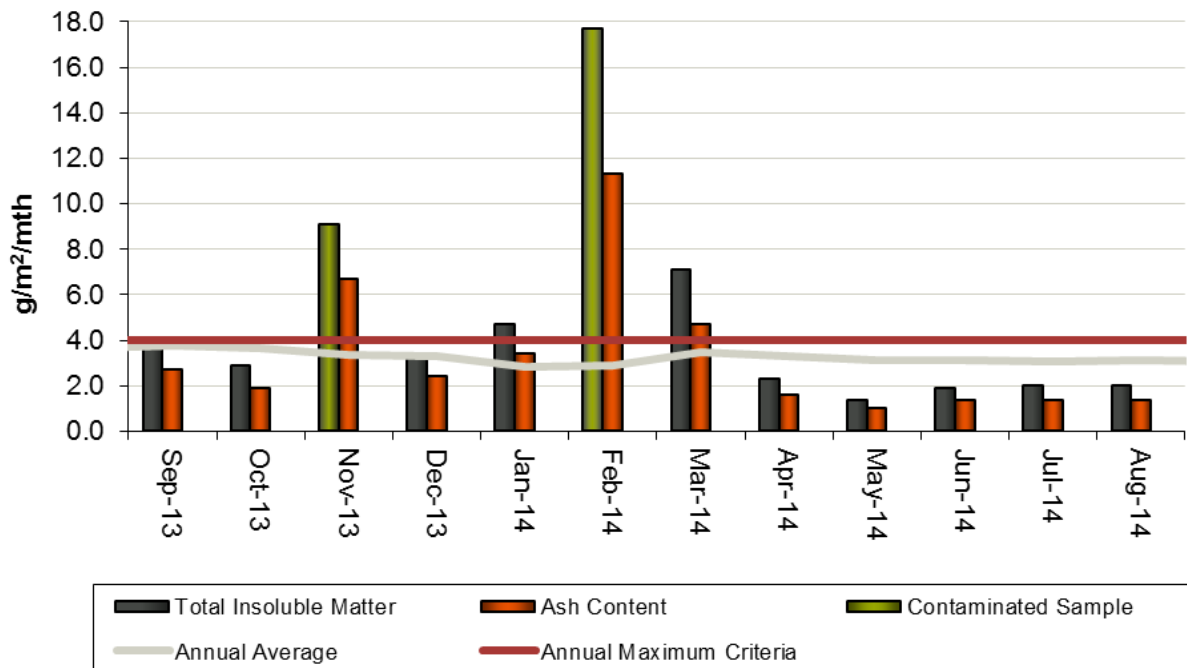
Depositional Dust:



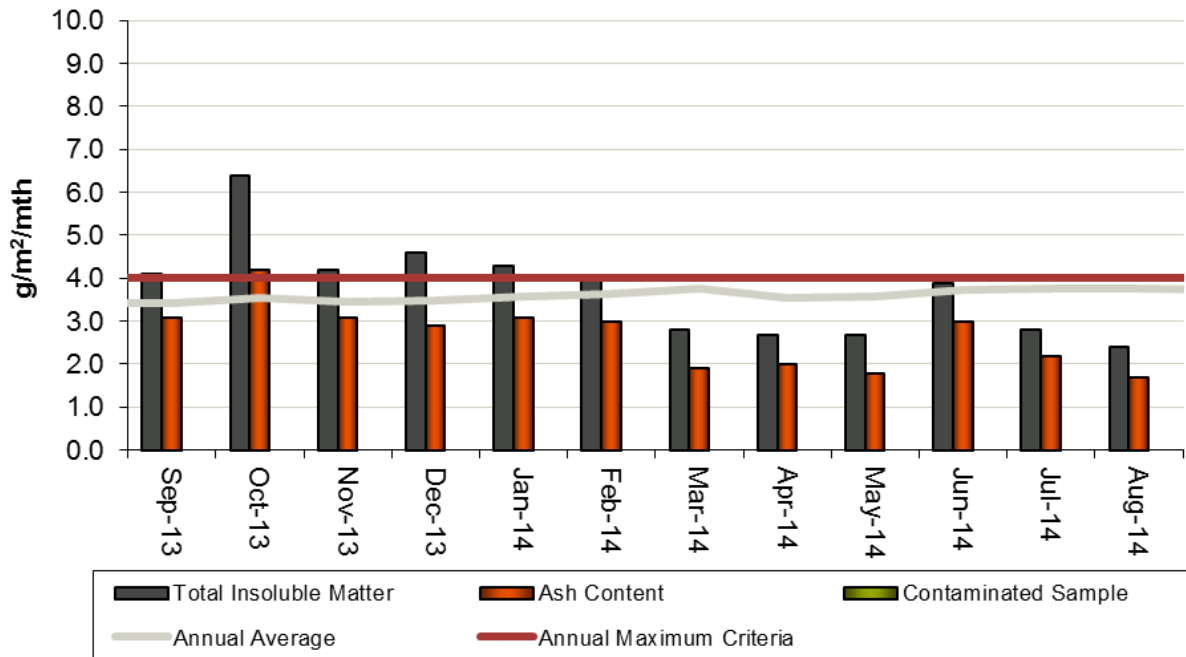
**Mt Arthur Coal Depositional Dust DD14
(September 2013 - August 2014)**



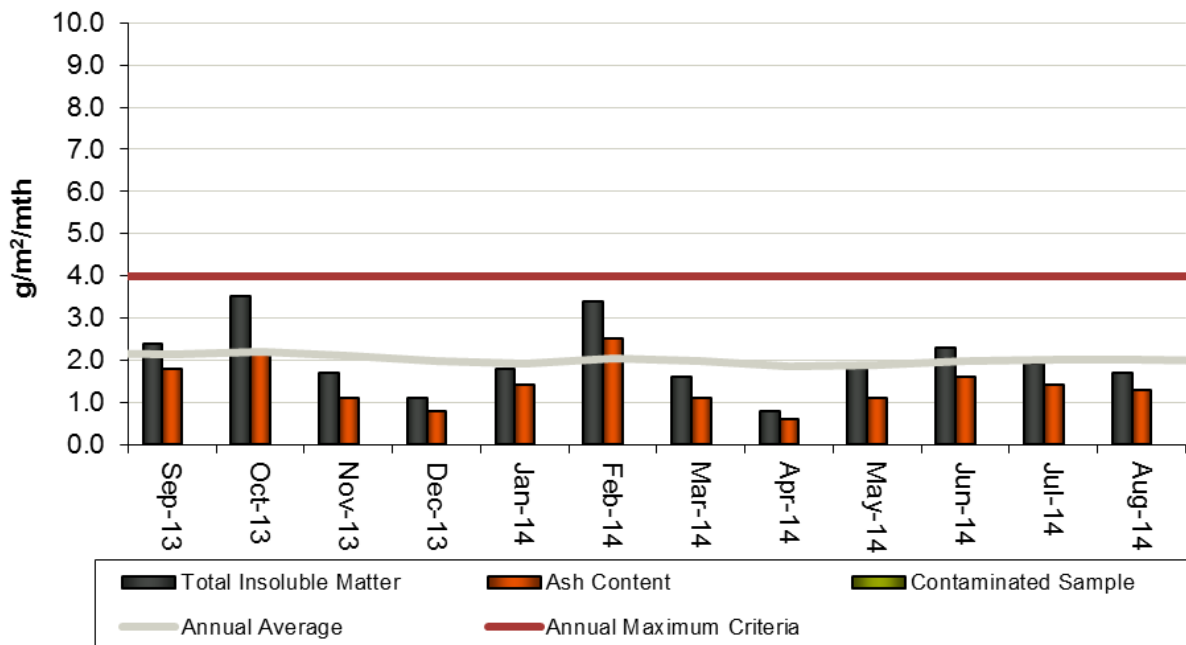
**Mt Arthur Coal Depositional Dust DD15
(September 2013 - August 2014)**



**Mt Arthur Coal Depositional Dust DD19
(September 2013 - August 2014)**



**Mt Arthur Coal Depositional Dust DD21
(September 2013 - August 2014)**



5. Surface Water Data (Jul - Aug 2014)

Surface Water Criteria:

Table 5: Surface water impact assessment criteria

Focus Area	Parameter	Trigger Value	Monitoring Site
Surface water quality	pH	If recorded value at a monitoring site is outside the range 6.5 – 9.0 for 3 consecutive readings	SW01, SW02, SW03, SW04, SW12, SW13, SW15, SW18
	EC	If recorded value at a monitoring site is greater than the 90 th percentile of baseline data for 3 consecutive readings	
	TSS		

Table 6: Surface water impact assessment trigger values

Site ID	pH		EC ($\mu\text{c}/\text{cm}$)		TSS (mg/L)	
	Low Trigger	High Trigger	90 th Percentile Trigger	Number of data points	90 th Percentile Trigger	Number of data points ₁
SW01	6.5	9.0	9,638	168	55	162
SW02			9,200	132	31	132
SW03			8,394	182	11	173
SW04			12,000	186	29	178
SW09			6,755	46	174	43
SW10			8,440	97	185	96
SW12			5,807	124	89	114
SW13			760	31	1,144	30
SW15			4,739	82	37	73
SW18			3,984	65	15	64

Notes: 1. based on a baseline data up to the 1st of September 2010

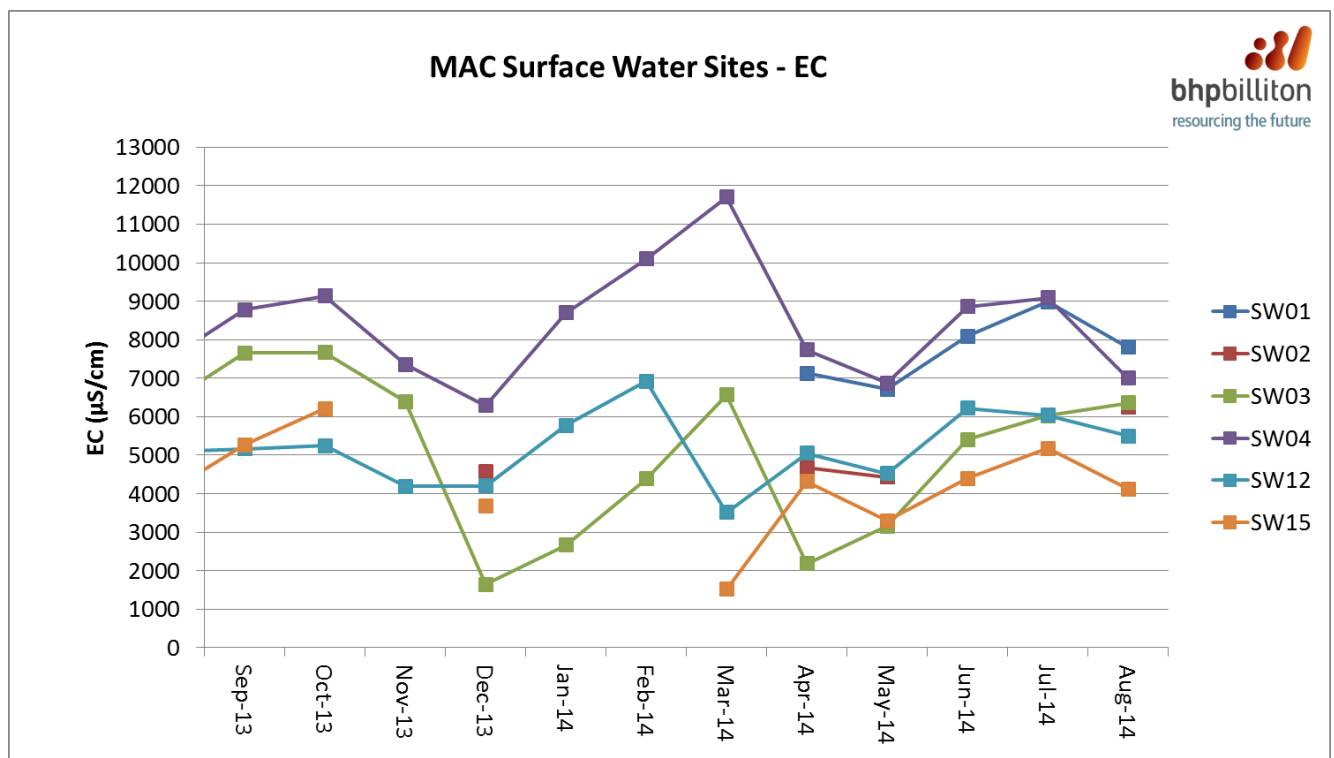
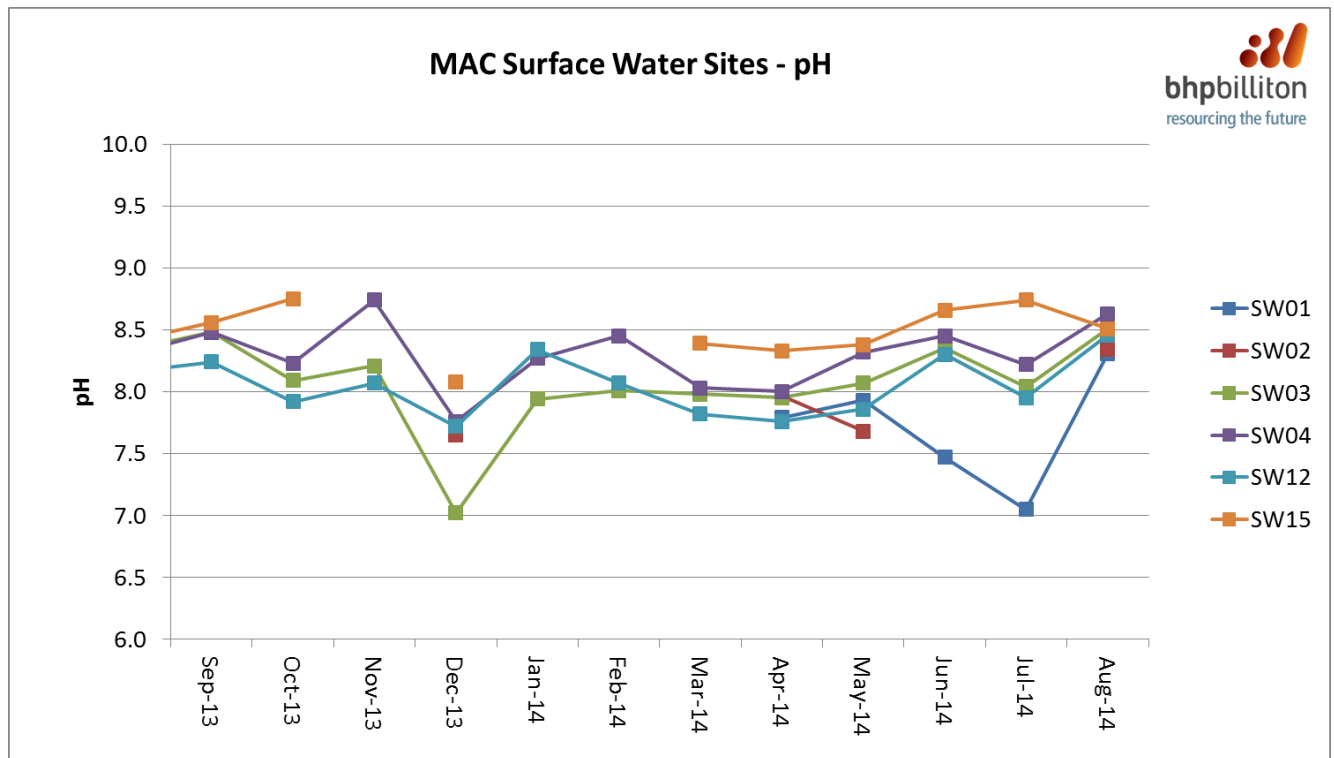
Surface Water Summary:

- No reportable elevated results were recorded during July or August.

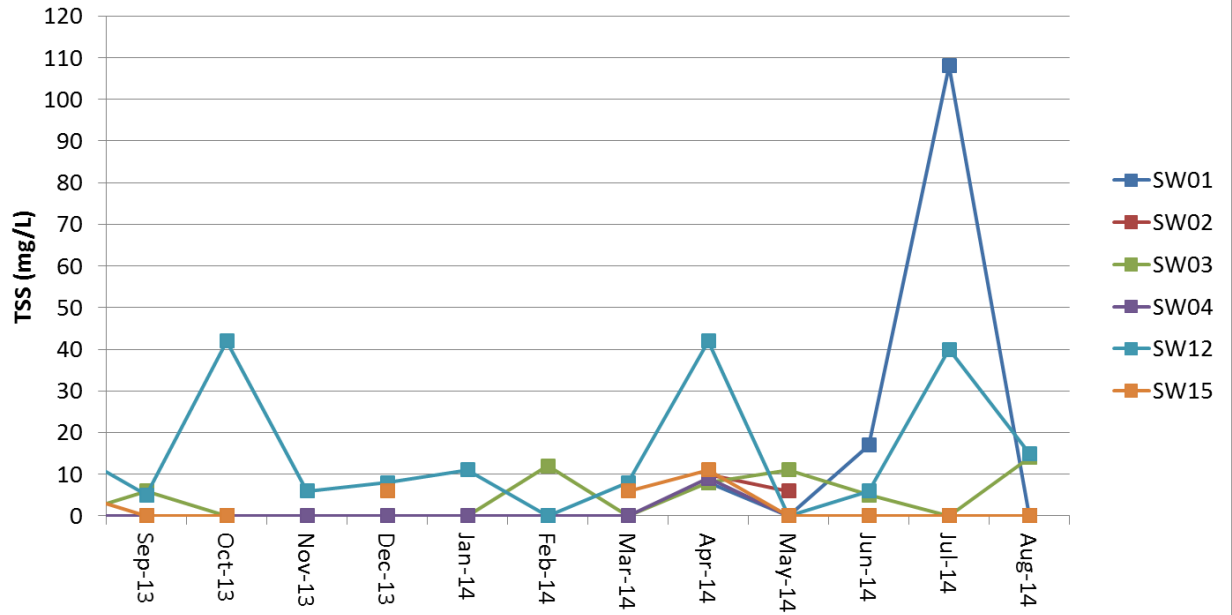
Surface Water Data Capture Rates:

Site ID	Saddlers Creek			Quarry Creek	Ramrod Creek	Whites Creek
	SW01	SW02	SW03	SW04	SW12	SW15
May-14	100%	100%	100%	100%	100%	100%
Jun-14	100%	100%	100%	100%	100%	100%

Surface Water Parameters:



MAC Surface Water Sites - TSS



6. Noise Data (Jul - Aug 2014)

Noise Criteria:

Impact Assessment Criteria

2. The Proponent shall ensure that the noise generated by the Mt Arthur mine complex does not exceed the noise impact assessment criteria in Table 2 at any residence on privately-owned land or on more than 25 per cent of any privately-owned land, except where such exceedance is predicted in the EA. For these properties, the Proponent shall comply with the noise level predictions in the EA.

However, these noise limits do not apply if the Proponent has an agreement with the relevant owner/s of these residences/land to generate higher noise levels, and the Proponent has advised the Department in writing of the terms of this agreement.

Table 2: Noise Impact Assessment Criteria dB(A)

Location	Day ($L_{Aeq}(15min)$)	Evening ($L_{Aeq}(15min)$)	Night ($L_{Aeq}(15min)$)	Night ($L_{A1}(1min)$)
A – Antiene Estate	37	40	38	45
B – Skelletar Stock Route, Thomas Mitchell Drive, Denman Road East	39	38	37	45
C – Racecourse Road	41	40	39	45
D – Denman Road North-west, Roxburgh Vineyard (north-east), Roxburgh Road	37	36	35	45
E – South Muswellbrook	39	39	39	45
F – Denman Road West, Roxburgh Vineyard (west)	37	36	35	45
G – East Antiene	41	40	39	45

Land Acquisition Criteria

3. If the noise generated by the Mt Arthur mine complex exceeds the criteria in Table 3 at any residence on privately-owned land or on more than 25 per cent of any privately-owned land, the Proponent shall, upon receiving a written request for acquisition from the landowner, acquire the land in accordance with the procedures in conditions 7-8 of schedule 4.

Table 3: Land acquisition criteria dB(A) $L_{Aeq}(15min)$

Location	Day	Evening	Night
A – Antiene Estate	42	45	43
B – Skelletar Stock Route, Thomas Mitchell Drive, Denman Road East	44	43	42
C – Racecourse Road	46	45	44
D – Denman Road North-west, Roxburgh Vineyard (north-east), Roxburgh Road	42	41	40
E – South Muswellbrook	44	44	44
F – Denman Road West, Roxburgh Vineyard (west)	42	41	40
G – East Antiene	46	45	44

Definitions:

$L_{Aeq}(15min)$ – The average noise energy during a 15 minute period.

$L_{A1}(1min)$ – The noise level exceeded for 1% of 1 minute. This measurement is generally regarded as the maximum noise level during a monitoring period.

Noise Summary:

- Mt Arthur Coal has eight statutory attended noise monitoring locations.
- There were no reportable exceedances recorded in July or August.
- Statutory attended noise monitoring results for July and August for $L_{Aeq(15min)}$ and $L_{A1(1min)}$ are shown below.

Noise Data Capture Rates:

	NP04	NP07	NP10	NP12	NP13	NP14	NP15	NP16
Jul-14	100%	100%	100%	100%	100%	100%	100%	100%
Aug-14	100%	100%	100%	100%	100%	100%	100%	100%

$L_{Aeq(15min)}$	NP04	NP07	NP10	NP12	NP13	NP14	NP15	NP16
Representative residential assessment zone	A	C	E	G	N/A	D	D & F	B
Noise impact assessment criteria (intrusive criteria) ($L_{Aeq(15min)}$)	38	39	39	39	N/A	35	35	37
Land acquisition criteria ($L_{Aeq(15min)}$)	43	44	44	44	N/A	40	40	42
Predicted noise level for 2016 for each monitoring location [^]	38	37	38	39	N/A	34	35	38
16-17 July 2014	34	IA	<30	NM	IA	IA	IA	NM
21-22 August 2014	IA	31	IA	IA	IA	29	28	29
$L_{A1(1min)}$	NP04	NP07	NP10	NP12	NP13	NP14	NP15	NP16
Representative residential assessment zone	A	C	E	G	N/A	D	D & F	B
Noise impact assessment criteria ($L_{A1(1min)}$)	45	45	45	45	N/A	45	45	45
16-17 July 2014	41	IA	32	NM	IA	IA	IA	NM
August 2014	IA	34	IA	IA	IA	32	31	31

[^] Modelling for 2016 is considered to be representative for FY14.

NM – Mt Arthur Coal's operations were audible but not measurable.

IA – Mt Arthur Coal's operations were inaudible.

N/A – Predicted noise levels were not applicable as monitored on land owned by Mt Arthur Coal.

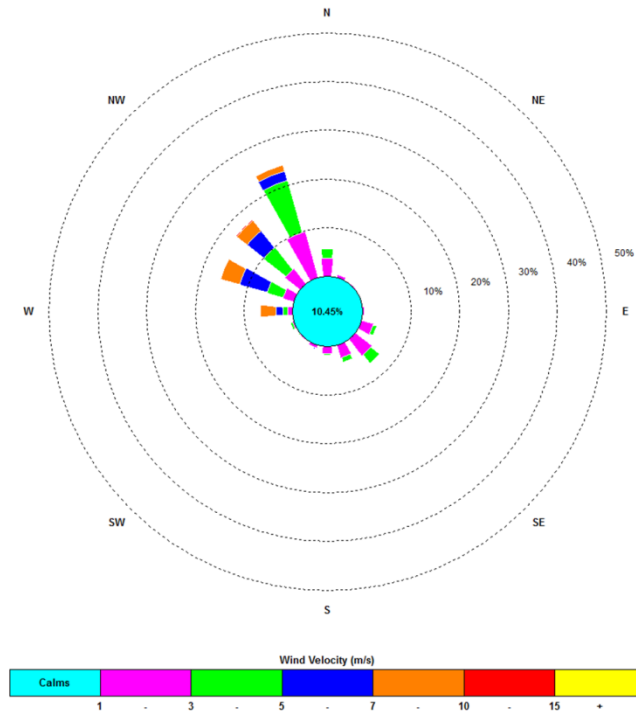
* Noise emission limits do not apply for winds greater than 3m/s (at a height of 10m), or temperature inversion conditions greater than or equal to 4°C/100m.

** Result is not greater than 2dB above limit and is therefore in compliance with criteria. Remeasure recorded <30 dB confirming that the elevated result was not sustained.

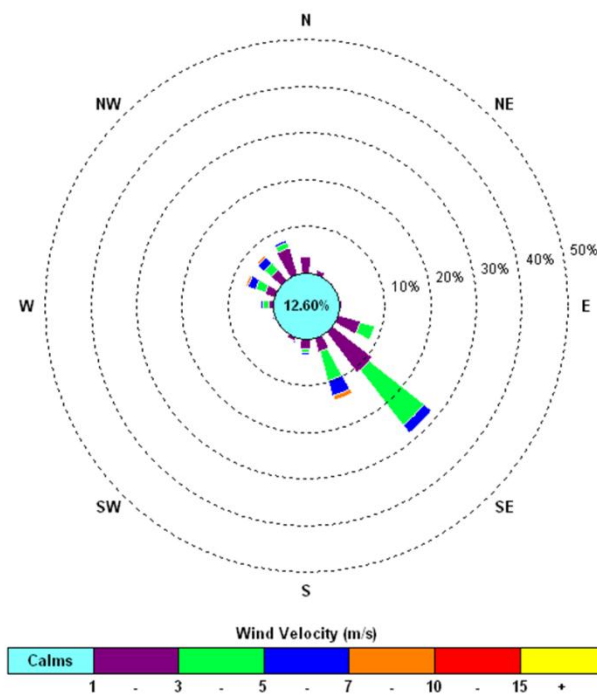
7. Weather Data (Jul - Aug 2014)

Monthly Windroses for Mt Arthur Coal Industrial Area Meteorological Station:

July 2014



August 2014



2014	Temperature 10m (°C)			Windspeed (m/s)			Sigma Theta			Solar Radiation (W/m ²)			Rainfall (mm)	No. of days rain >1mm
	Min	Average	Max	Min	Average	Max	Min	Average	Max	Min	Average	Max		
January	15.2	24.0	36.7	0.0	4.1	10.9	5.8	19.6	93.4	0.0	408.6	1687.1	8.4	1
February	13.6	22.6	36.3	0.0	3.7	13.0	5.9	17.8	95.0	0.0	339.1	1693.2	96.0	7
March	12.2	20.7	29.7	0.0	3.0	12.0	3.3	17.6	100.8	0.0	289.1	1543.8	129.0	8
April	6.8 [^]	18.1 [^]	32.9 [^]	0.0	2.5	8.6	0.0	17.4	94.8	0.0	246.8	1585.9	92.8	7
May	4.5 [^]	14.3 [^]	24.7 [^]	0.0	2.6	12.1	2.3	16.9	100.0	0.0	201.4	1169.5	13.8	3
June	4.2 [^]	11.6 [^]	19.5 [^]	0.0	3.5	18.1	4.2	16.6	101.7	0.0	163.2	995.9	11.6	5
July	1.4 [^]	10.5 [^]	21.0 [^]	0.0	3.7	11.9	3.9	15.4	99.8	0.0	194.0	1140.1	49.8 ^{^^}	1
August	0.9 [^]	11.5 [^]	19.8 [^]	0.0	3.1	12.9	1.2	17.1	94.1	0.0	226.5	1315.9	44.0 ^{^^}	2

[^] 10m temperature data was not available due to issues with the monitoring instruments and has been substituted with 2m temperature data.

^{^^} Erroneous readings substituted with WS10 data

Agenda Item 9 - Overview of Community Support (July - August 2014)

During July and August 2014, Mt Arthur Coal financially supported the following organisations and events:

- Aberdeen Highland Games
- NSW Minerals Council's 2014 Environment and Community Conference held in the Hunter Valley

Mt Arthur Coal also provided in-kind support to help assist:

- Muswellbrook South Public School Breakfast Club
- Muswellbrook and Upper Hunter Eisteddfod
- Working bees at Singleton Public School and Muswellbrook High School

Mt Arthur Coal also participated in the opening of Muswellbrook Pre School Kindergarten's new facility on Sowerby St, to which the Company contributed \$1.1 million, and the re-opening of Highbrook Park, to which the Company contributed \$500,000.

Mt Arthur Coal also welcomed Bangarra Dance Company to Muswellbrook thanks to a partnership between the group and BHP Billiton Sustainable Communities. Bangarra hosted workshops with local schools.

Agenda Item 10 - Community Complaints Summary (July - August 2014)

Date and time	From	Issue	Lodgement type	Investigation and response to caller
1/07/2014 11:09	Denman Road	Blast Vibration	Community Response Line	Investigation revealed no unusual mining operations were occurring at the time.
3/07/2014 10:28	Muswellbrook	Blast Vibration	Community Response Line	Investigation revealed no unusual mining operations were occurring at the time.
3/07/2014 10:39	Racecourse Road	Blast Vibration	Community Response Line	Investigation revealed no unusual mining operations were occurring at the time.
8/07/2014 11:02	Denman Road	Blast Fume	Community Response Line	Investigation revealed no unusual mining operations were occurring at the time.
17/07/2014 11:46	Denman Road	Other	Community Response Line	Investigation revealed no unusual mining operations were occurring at the time.
19/07/2014 12:42	South Muswellbrook	Operational Noise	Community Response Line	Investigation revealed no unusual mining operations were occurring at the time.
24/07/2014 14:38	Denman Road	Blast Fume	Community Response Line	Blast Fume, but did not leave site. Everything else within criteria.
24/07/2014 14:39	Other	Blast Overpressure Noise	Community Response Line	Blast Fume, but did not leave site. Everything else within criteria.
24/07/2014 15:00	Other	Blast Fume	Community Response Line	Blast Fume, but did not leave site. Everything else within criteria.

Date and time	From	Issue	Lodgement type	Investigation and response to caller
30/07/2014 20:44	Skellatar Stock Route	Lighting	Community Response Line	Investigation revealed location of lights, and no action was taken as the lights were not facing the neighbour. Caller did not request to be called back regarding investigation results.
5/08/2014 10:44	Muswellbrook	Blast Vibration	Community Response Line	Investigation revealed weather conditions were suitable for blasting at the time. Results indicated overpressure noise and ground vibration levels were within regulatory criteria. Caller was advised of investigation and monitoring results.
7/08/2014 19:41	Roxburgh Road	Lighting	Community Response Line	Caller was notified that no unusual operations were occurring at the time of the complaint.
8/08/2014 10:52	Denman Road	Blast Vibration	Community Response Line	Investigation revealed weather conditions were suitable for blasting at the time. Results indicated overpressure noise and ground vibration levels were within regulatory criteria. Fume rating was 0. Caller was advised of investigation and monitoring results.
8/08/2014 11:05	Roxburgh Road	Blast Vibration	Community Response Line	Investigation revealed weather conditions were suitable for blasting at the time. Results indicated overpressure noise and ground vibration levels were within regulatory criteria. Fume rating was 0. Caller was advised of investigation and monitoring results.
8/08/2014 11:16	Roxburgh Road	Blast Overpressure Noise	Community Response Line	Investigation revealed weather conditions were suitable for blasting at the time. Results indicated overpressure noise and ground vibration levels were within regulatory criteria. Fume rating was 0. Caller was advised of investigation and monitoring results.
8/08/2014 11:52	Roxburgh Road	Blast Vibration	Community Response Line	Investigation revealed weather conditions were suitable for blasting at the time. Results indicated overpressure noise and ground vibration levels were within regulatory criteria. Fume rating was 0. Caller was advised of investigation and monitoring results.

Agenda Item 11 - General business

Call for topics to discuss at next meeting.

Agenda Item 12 - Next meeting date

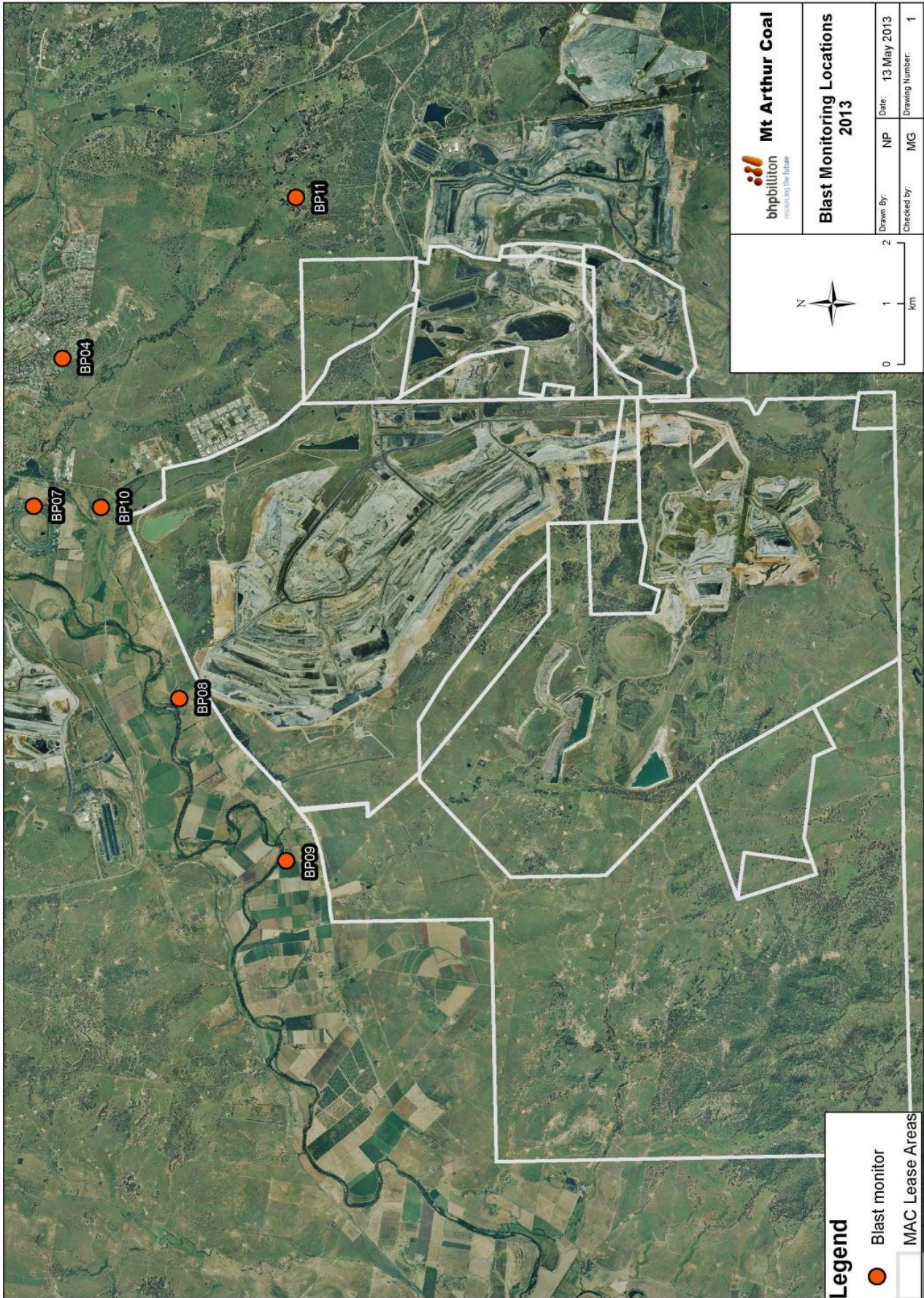
Next Mt Arthur Coal CCC meeting:

- When: Wednesday 3 December 2014
- Time: 2pm
- Where: Mt Arthur Coal

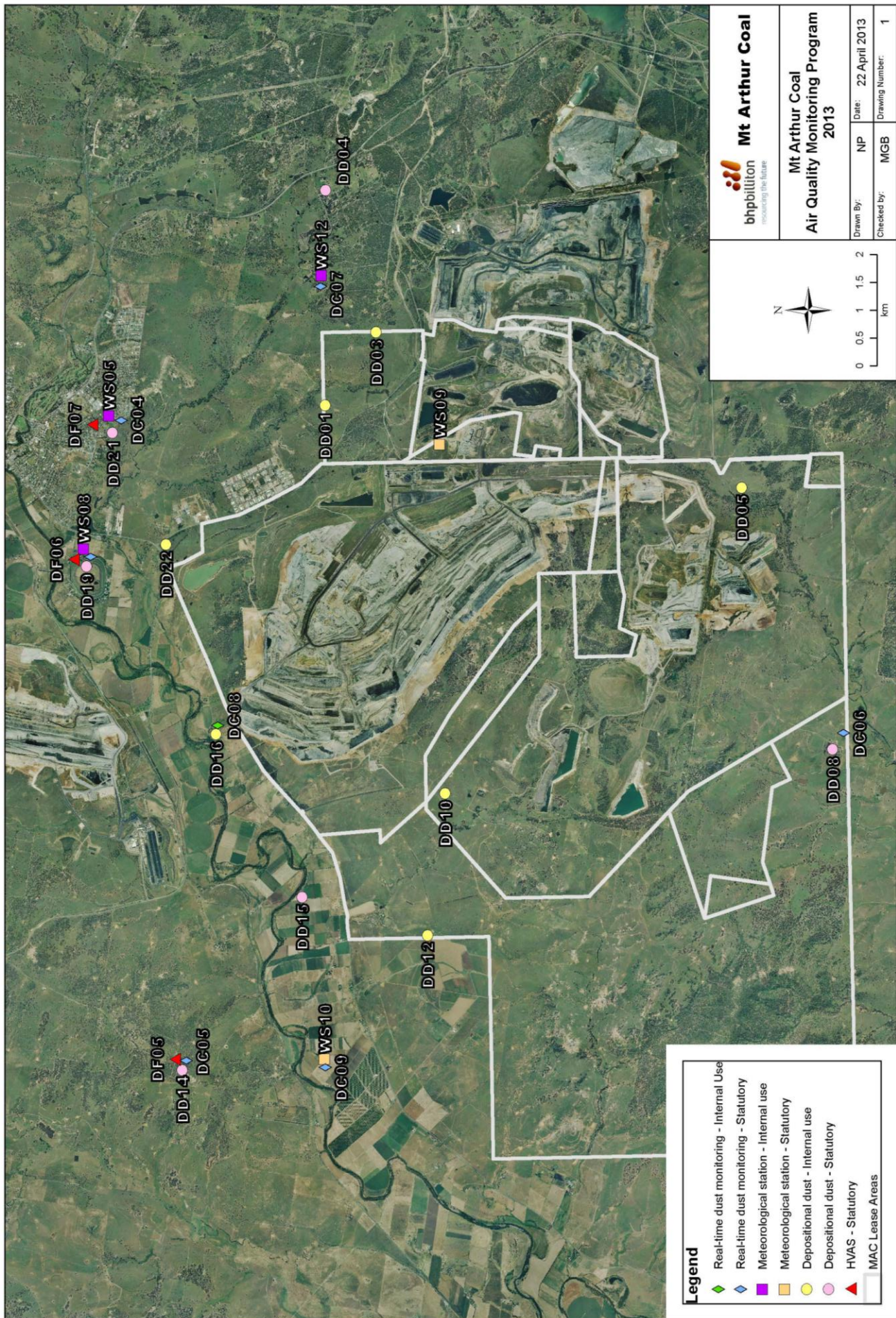
Agenda Item 13 - Meeting close

Appendix 1: Monitoring Locations

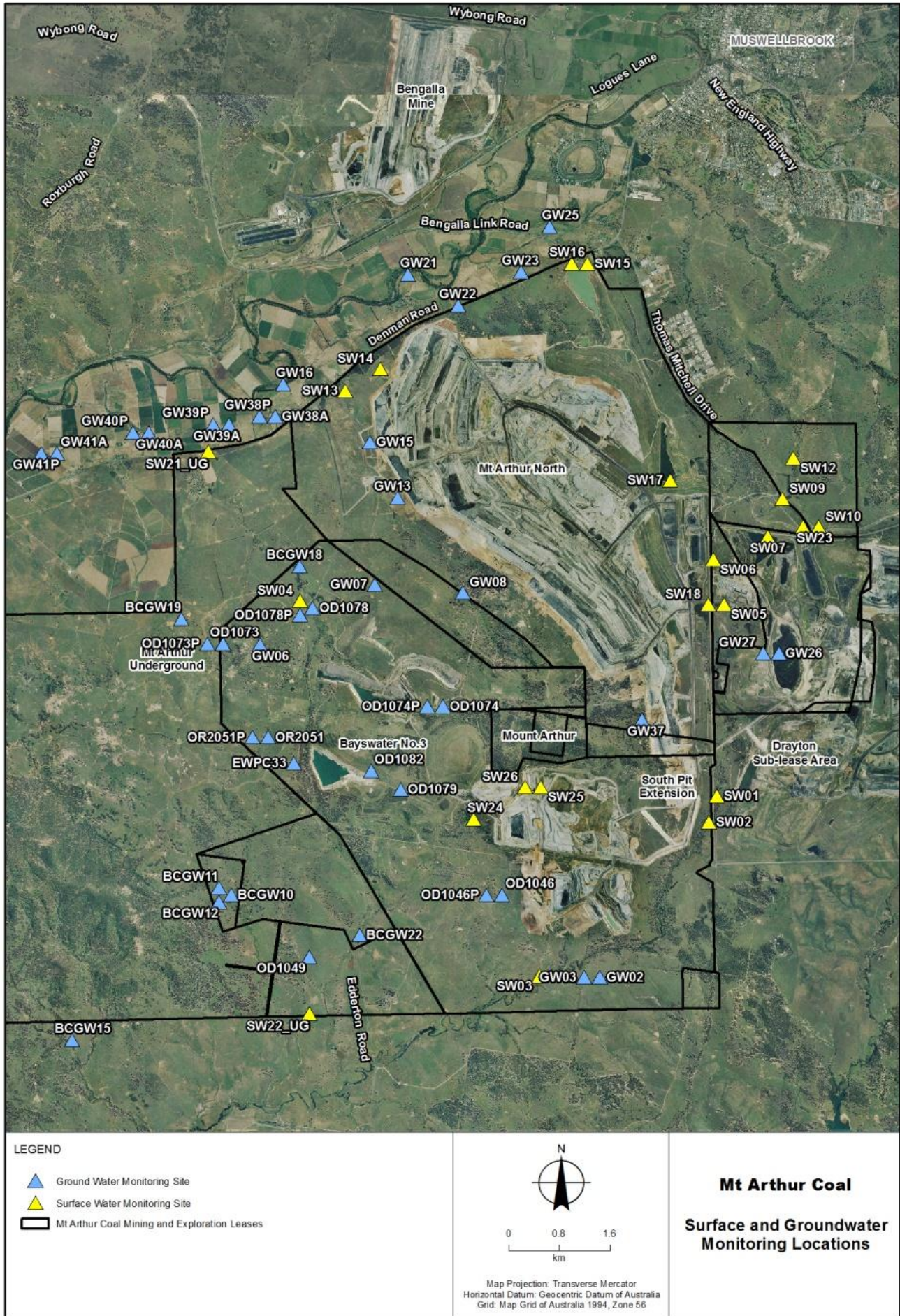
Blast Monitoring:



Air Quality Monitoring:



Water Monitoring:



Noise Monitoring:

