

MAC-ENC-MTP-042

ABORIGINAL HERITAGE MANAGEMENT PLAN

Document Owner

Mike Gale, Environment Superintendent

Document Approver

Julie McNaughton, Environment and Community Manager

Version No	Date Published	Details
Draft 2	23 July 2012	Draft provided to DP&I addressing comments.
Draft 3	29 July 2012	Updated figures to improve resolution and correct minor error.
Final	20 August 2012	Approved by the Department of Planning & Infrastructure on 20/8/2012.

Contents

1.	Introduction.....	4
1.1.	Management Plan Requirement	4
1.2.	Objectives	4
2.	Community Consultation	5
2.1.	Consultation during the EA	5
2.2.	Consultation for Aboriginal Heritage Management Plan	5
2.3.	Ongoing Consultation	5
3.	Aboriginal Archaeology and Cultural Heritage Assessments.....	6
3.1.	Summary of Previous Assessments and Plans.....	6
3.2.	Archaeological Sites within the Mt Arthur EA Boundary.....	6
4.	Relevant Legislation	12
4.1.	Environmental Planning and Assessment Act 1979 (EP&A Act).....	12
4.2.	National Parks and Wildlife Act 1974	12
5.	Management of Aboriginal Cultural Heritage.....	13
5.1.	Thomas Mitchell Drive Offset Area (TMDOA)	13
5.2.	Monitoring of Significant Archaeological Sites	14
5.2.1.	Grinding Grooves	14
5.2.2.	Scarred Trees.....	14
5.3.	Maintenance of AHIMS GIS Data	15
5.4.	Archaeological Salvage Program.....	15
5.4.1.	Surface Salvage	15
5.4.2.	Salvage/Inspection Timeframes	16
5.4.3.	Process for Designation of Areas as ‘Cleared for Site Disturbance’	16
5.4.4.	Keeping Place	16
5.4.5.	Discovery of Previously Unknown Sites and Human Skeletal Remains	17
5.5.	Access for Aboriginal community	18
5.6.	Incident/Complaint Response	18
5.7.	Incident/Complaints Register	19
5.8.	Training and Development.....	19
6.	Reporting.....	20
7.	Review.....	20
Appendix 1:	Project Approval Requirements.....	21
Appendix 2:	Consulted Aboriginal Stakeholder Groups	25
Appendix 3:	Known Archaeological Sites within the Mt Arthur EA Boundary	27
Appendix 4:	Summary of Key Recommendations from Consultation.....	41
Appendix 5:	Correspondence Records	42

Figures

Figure 1:	Aboriginal Heritage Sites	7
Figure 2:	Aboriginal Heritage Sites	8
Figure 3:	Aboriginal Heritage Sites	9
Figure 4:	Aboriginal Heritage Sites	10
Figure 5:	Aboriginal Heritage Sites	11

Tables

Table 1: Archaeological Sites within Mt Arthur Coal EA Boundary	6
Table 2: Grinding Groove Platforms Located Within the EA Boundary.....	14
Table 3: Scarred Trees Located Within the EA Boundary	15
Table 4: Artefact discovery process	17

1. Introduction

Hunter Valley Energy Coal Pty Ltd operates the Mt Arthur Coal Complex which consists of approved open cut and underground mining operations, a rail loop and associated rail loading facilities. The operations are located in the Upper Hunter Valley, NSW approximately five kilometres south west of Muswellbrook.

This Aboriginal Heritage Management Plan (AHMP) has been prepared to fulfil the conditions and commitments of NSW Department of Planning and Infrastructure (DP&I) project approval 09_0062 dated 24 September 2010, and project approval 06_0091 dated 2 December 2008, which are presented in Appendix 1.

1.1. Management Plan Requirement

Schedule 3, Condition 45 of Project Approval 09_0062 requires the preparation of a Heritage Management Plan to facilitate both the salvage of Aboriginal sites and ongoing protection of European heritage structures, as shown in **Appendix 1**.

1.2. Objectives

The objectives of this management plan are:

- To mitigate the impacts of Mt Arthur Coal operations on Aboriginal heritage;
- To comply with the requirements of the *National Parks and Wildlife Act 1974* and the *Environmental Planning and Assessment Act 1979*;
- To continue the active partnership between the Aboriginal community and BHP Billiton in the management of cultural heritage, with input from Office of Environment & Heritage (OEH) where required;
- To achieve cultural heritage management outcomes which are satisfactory to the local Aboriginal community; and
- To further advance the ongoing full and open communication and consultation between the Aboriginal community and BHP Billiton.

2. Community Consultation

2.1. Consultation during the EA

The requirements of the *Draft Guidelines for Aboriginal Cultural Heritage Impact Assessment and Community Consultation* (DEC, 2005) and *Interim Community Consultation Requirements for Applicants* (DEC, 2004) were applied to ensure that an appropriate level of engagement with the Aboriginal community was undertaken for the Project in relation to Aboriginal Archaeology and Cultural Heritage. Details of the consultation can be found in the Mt Arthur Coal Consolidation Project Environmental Assessment.

A list of the original 36 identified stakeholders is provided in Appendix 2.

2.2. Consultation for Aboriginal Heritage Management Plan

OEH and the Aboriginal community have been consulted during the development of this Management Plan in accordance with the *Aboriginal Cultural Heritage Consultation Requirements for Proponents, 2010*. Draft copies of the Aboriginal Heritage Management Plan were distributed to Aboriginal stakeholders (refer to Appendix 2). Stakeholders were also invited to participate in a meeting to discuss the Management Plan. The meeting was held on 10 June 2011, and a summary of the key recommendations relating to this AHMP resulting from the meeting and consultation in general is provided in Appendix 4.

2.3. Ongoing Consultation

As committed in the EA, Mt Arthur Coal will establish an Aboriginal Heritage Management Committee including at least five representatives of the registered Aboriginal stakeholders to guide the ongoing management of Aboriginal sites at Mt Arthur Coal.

3. Aboriginal Archaeology and Cultural Heritage Assessments

3.1. Summary of Previous Assessments and Plans

The Mt Arthur Coal Complex has been subject to some of the most detailed Aboriginal heritage assessments and archaeological salvage projects ever conducted in NSW (see references in the Mt Arthur Coal Consolidation Project Environmental Assessment). In total, 676 Aboriginal sites are registered in OEH’s Aboriginal Heritage Information Management System (AHIMS) at the Mt Arthur Coal Complex.

Open camp sites consisting of stone artefacts are the most common sites, with three grinding groove sites also known to be present.

3.2. Archaeological Sites within the Mt Arthur EA Boundary

676 Aboriginal sites have previously been identified within Mt Arthur Coal EA Boundary. A summary of sites are described in Table 1 (as sourced from the *Mt Arthur Coal Consolidation Project – Aboriginal Archaeology and Cultural Heritage Assessment*, AECOM 2009). Details of each site are provided in Appendix 2.

Table 1: Archaeological Sites within Mt Arthur Coal EA Boundary

Site Type	No. Of Sites	%
Artefact Scatter	587	87%
Isolated Artefact	77	11%
Scarred Tree	8	~1%
Grinding Groove	3	~1%
Potential Archaeological Deposit	1	0.1%
Total	676	100%

Figure 1: Aboriginal Heritage Sites

AECOM

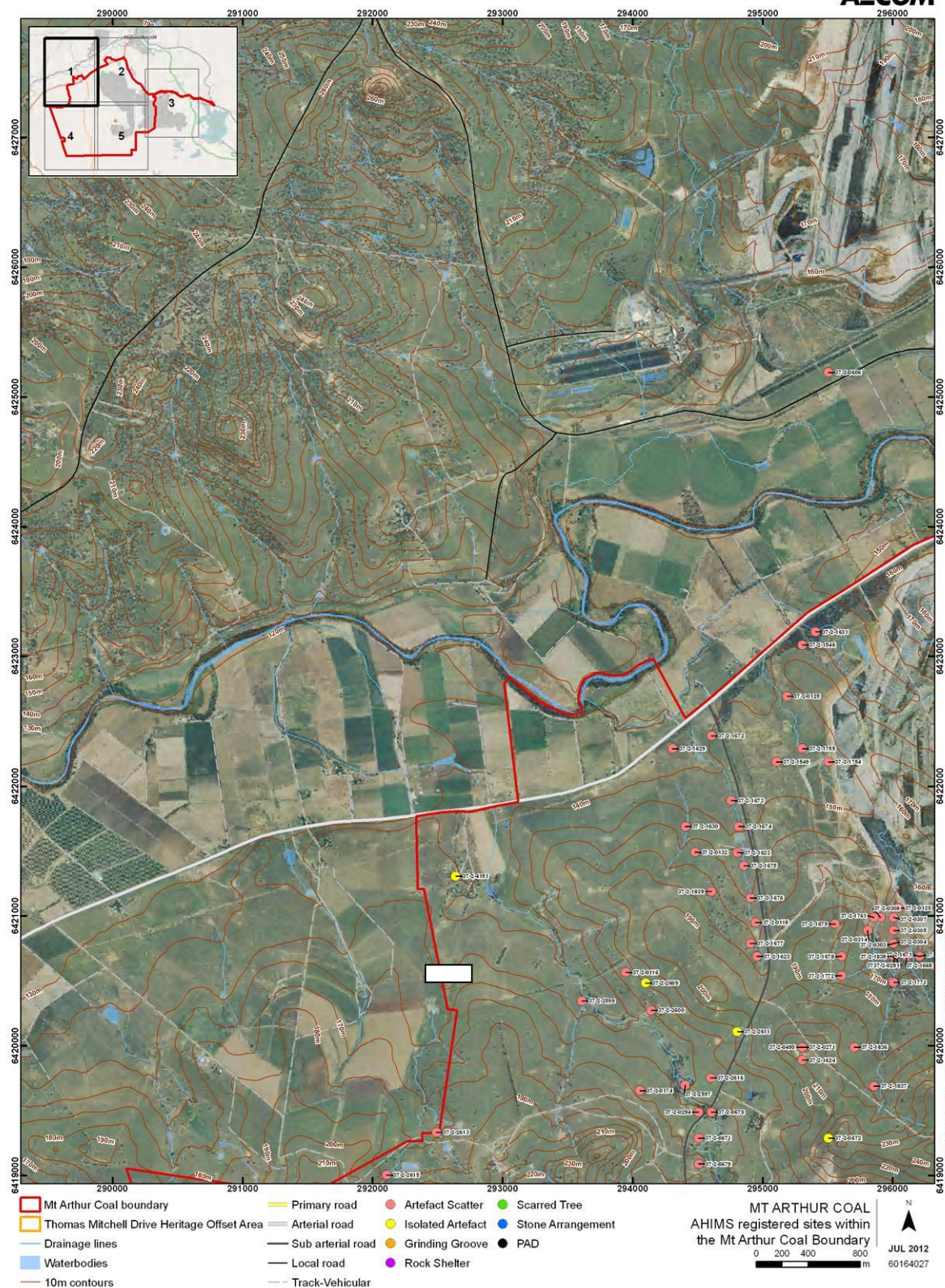


Figure 2: Aboriginal Heritage Sites



Figure 3: Aboriginal Heritage Sites

AECOM



Figure 4: Aboriginal Heritage Sites

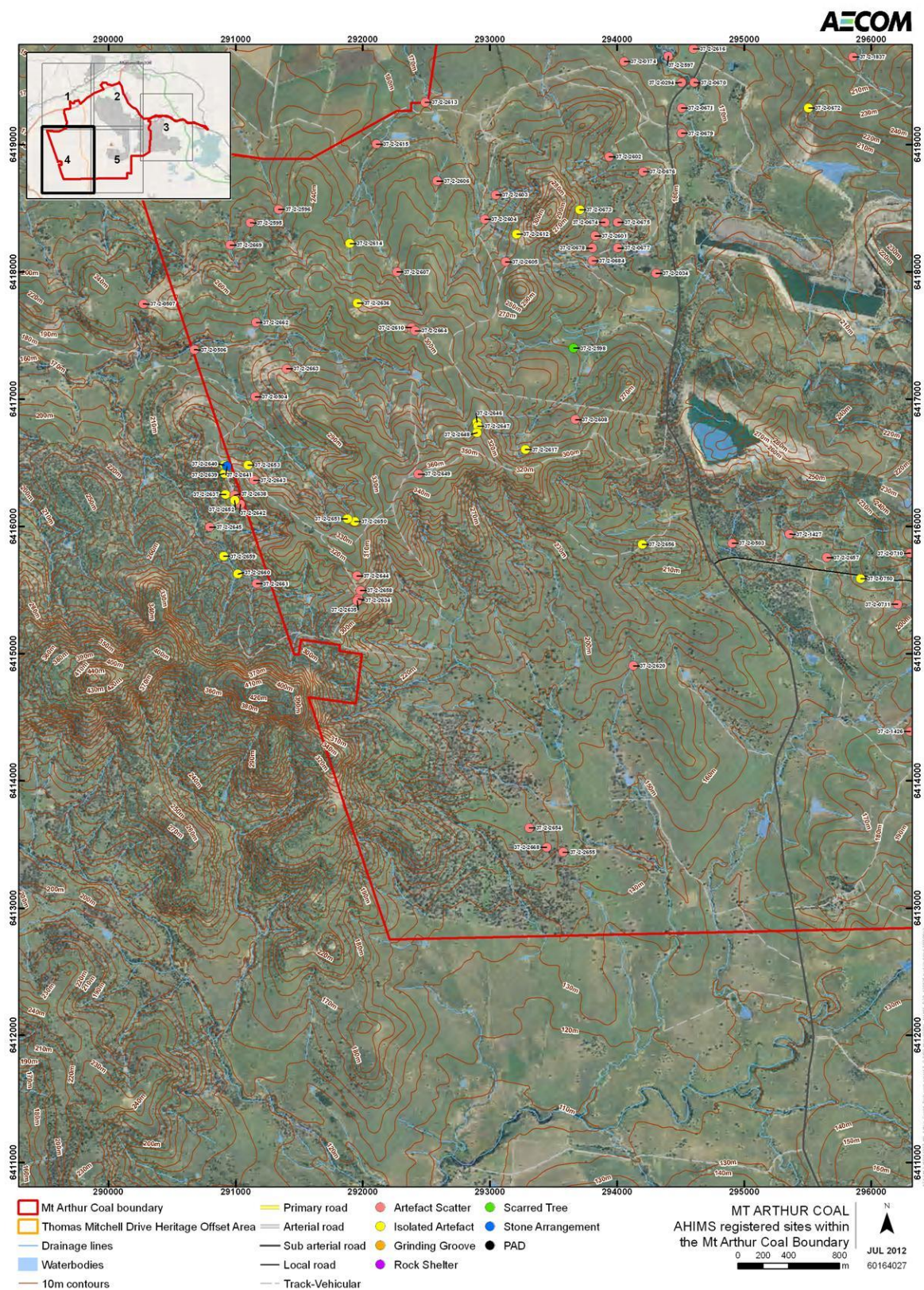


Figure 5: Aboriginal Heritage Sites

AECOM



4. Relevant Legislation

4.1. Environmental Planning and Assessment Act 1979 (EP&A Act)

The EP&A Act requires that consideration be given to environmental impacts as part of the land use planning process. In NSW, environmental impacts are interpreted as including impacts to cultural heritage.

The Mt Arthur Coal Consolidation Project was approved under Part 3A of the EP&A Act (now repealed), which provides an approvals regime for all 'major projects'. Major projects are defined under Schedule 1 of the State Environmental Planning Policies (SEPP) (Major Projects) 2005 (SEPP (Major Projects)). Part 3A applies to all projects where the Minister has the approval role. A Part 3A approval still requires consultation with the community and relevant State Government agencies. However, the requirement for certain permits and licences is removed under Part 3A. The project approval under the EP&A Act is the primary approval document for Mt Arthur Coal. The NPW Act outlined below is contained in this document for information only.

Aboriginal archaeological and cultural heritage impact assessments carried out under Part 3A of the EP&A Act should address the steps and requirements outlined in the Guidelines for Aboriginal Cultural Heritage Impact Assessment and Community Consultation (DECCW 2005) and Aboriginal Consultation Guidelines 2010 to ensure statutory compliance. This Management Plan has been undertaken in accordance with these guidelines.

Section 75U of the EP&A Act provides that if the Project is granted Project Approval under Part 3A of the EP&A Act, then an AHIP is not required for harm to Aboriginal objects.

The Project has been approved as a 'major project' under Part 3A of the EP&A Act, approval numbers 06_0091 and 09_0062.

4.2. National Parks and Wildlife Act 1974

The Mt Arthur Coal Complex operates under project approvals 09_0062 and 06_0091 granted under Part 3A of the EP&A Act. As discussed in Section **Error! eference source not found.**, approval under Part 3A of the EP&A Act removes the requirements to obtain Aboriginal Heritage Impact Permit (AHIP) under the *National Parks and Wildlife Act 1974* (NPW Act). The following is provided for information only.

The NPW Act, administered by the Office of Environment & Heritage (OEH), is the primary legislation for the protection of Aboriginal cultural heritage in NSW. The NPW Act gives the Director General of the OEH responsibility for the proper care, preservation and protection of 'Aboriginal objects' and 'Aboriginal places', defined under the Act as follows:

- An *Aboriginal object* is any deposit, object or material evidence (that is not a handicraft made for sale) relating to Aboriginal habitation of NSW, before or

during the occupation of that area by persons of non-Aboriginal extraction (and includes Aboriginal remains).

- An *Aboriginal place* is a place declared so by the Minister administering the NPW Act because the place is or was of special significance to Aboriginal culture. It may or may not contain Aboriginal objects.

Part 6 of the NPW Act provides specific protection for Aboriginal objects and places by making it an offence to harm them. An AHIP should be obtained if impacts to Aboriginal objects and/or places are anticipated and the project is not covered by Part 3A Approval. AHIPs are issued under Section 90 of the NPW Act.

Project Approvals under Part 3A of the EP&A Act are exempt from the provisions of Section 90 of the NPW Act.

Section 89A of the NPW Act requires notification of the location of identified Aboriginal objects within a reasonable time, with penalties for non-notification. Section 89A is binding in all instances, including Part 3A projects.

5. Management of Aboriginal Cultural Heritage

5.1. Thomas Mitchell Drive Offset Area (TMDOA)

To offset proposed ecological and cultural heritage impacts to this and previously approved projects, including the temporary Heritage Management Zones (HMZ) outlined in the Mt Arthur North EIS; a new 495 hectare offset area is to be established on the northern side of Thomas Mitchell Drive outside areas of future mining impacts (Figure 1b).

The Thomas Mitchell Drive Offset Area (TMDOA) was chosen as a replacement for the pre-existing HMZs because:

- it is of larger size (87 hectares larger);
- contains a more representative sample of pre-existing terrain units;
- contains a larger number of archaeological sites including rare site types (n=67); and
- It is removed from mining activities is therefore more readily accessible to the Aboriginal community.

The TMDOA is to be fenced with access procedures for the offset area to be developed by Mt Arthur Coal in consultation with Indigenous Stakeholders including opening hours and supervision of third parties.

To better facilitate the management of salvaged archaeological sites and current Mt Arthur Coal Archaeological Collections, a Keeping Place is to be established and constructed in consultation with Indigenous Stakeholders (see Section 5.4.4). The design and development of the Keeping Place is to incorporate storage facilities,

areas for archaeological displays & education areas, and facilities (desk space) for research and analysis of Mt Arthur Coal Archaeological Collections.

The TMDOA is to be managed by Mt Arthur Coal for the life of the mine, in consultation with the Aboriginal community.

5.2. Monitoring of Significant Archaeological Sites

5.2.1. Grinding Grooves

Three AHIMS registered grinding groove sites exist within the Mt Arthur Coal EA Boundary (Table 2). Each grinding groove platform will be fenced and managed in situ unless otherwise agreed by the Aboriginal community and approved by the state government.

The monitoring process for the grinding grooves will involve:

- Annual visual inspection for the life of the mine of all grinding groove platforms in all instances where grinding grooves are safely accessible by a Mt Arthur Coal Environmental Representative and/or nominated archaeologist and nominated stakeholder representatives.
- The initial visual inspection will act as a baseline assessment and be used for subsequent visual inspections as a check for potential impacts. The base line assessment will involve detailed photographic recording of each site at agreed locations with clear background landmarks present in each photograph to provide context. Each photograph should incorporate an appropriate scale for accurate archival recording.
- A sample of up to 10 of the better defined grooves should be recorded in detail and photographed for subsequent inspections.
- A detailed map of each groove should be undertaken to be used as a guide for subsequent visits and relocation.
- Follow up visual inspection will use the initial base line assessment to inform the documentation of any potential impacts (eg from blasting) including cracking, weathering and vegetation.

Table 2: Grinding Groove Platforms Located Within the EA Boundary

AHIMS #	AHIMS Site Name	Easting (GDA94 Zone 56)	Northing (GDA94 Zone 56)
37-2-0110	Mt Arthur;	297905	6417189
37-2-0111	Fairford 1	298705	6417889
37-3-0111	37-3-0111	298666.5	6417866

5.2.2. Scarred Trees

AHIMS registered scarred trees that exist within the Mt Arthur Coal EA Boundary are listed in Table 3. Two additional scarred trees were identified within the Offset survey

area but outside of the EA Boundary. Each tree will be fenced and managed as Aboriginal sites. Should there exist the potential for impacts, a more detailed arborist assessment of the scar origin will be conducted to confirm their status. If confirmed, appropriate management practices (avoidance, salvage etc) will be developed through consultation with Aboriginal stakeholders on a case by case basis.

Table 3: Scarred Trees Located Within the EA Boundary

AHIMS #	AHIMS Site Name	Easting (GDA94 Zone 56)	Northing (GDA94 Zone 56)
37-2-0734	LSC1;	298305	6415289
37-2-0735	LSC2;	298405	6415289
37-2-0736	LSC3;	298405	6415089
37-2-0737	LSC4;	297205	6415489
37-2-1431	Saddler's Pit Scarred Tree;	298605	6416739
37-2-1445	Quarry Creek Scarred Tree;	296605	6417739
37-2-1446	Quarry Creek Scarred Tree_2;	296855	6417489
37-2-2598	qc02	293553	6417211

(Note: some of these trees may require further assessment or may have been relocated under previous 90 permits.)

5.3. Maintenance of AHIMS GIS Data

A GIS database of AHIMS registered archaeological sites is to be maintained and updated to better inform Mt Arthur Coal staff on the presence of archaeological resources within the Mine.

5.4. Archaeological Salvage Program

The salvage program will allow the recovery of a sample of surface artefactual material to provide for their long-term curation. The salvage program will incorporate the following components:

- Salvage of surface artefacts;
- Recording of recovered artefacts; and
- Temporary storage of recovered materials in a Keeping Place (**Section 5.4.4**).

The salvage program will be led by an archaeologist in consultation with attending representatives from the Aboriginal community. GPS co-ordinates of salvaged sites will be recorded.

5.4.1. Surface Salvage

Surface salvage will involve the systematic recovery of all evident surface artefacts from all open artefact scatters and isolated finds at risk of impact within the Project disturbance area.

Surface collections will occur prior to the commencement of ground surface disturbance works within an area according to the following procedure:

- individual artefacts will be flagged;
- the locations of flagged artefacts will be recorded;
- flagged artefacts will be numbered and collected into a bag labelled with site number, date and collection details;
- artefacts will be retained for recording and report preparation;
- basic attributes will be recorded on collected artefacts: raw material, technological type, implement type, weight, maximum dimension; and
- a descriptive report will be prepared with a map of individual artefact locations within site or exposure boundaries.

Following survey and surface salvage, if the potential for significant sub-surface material is identified, with a strong scientific and heritage case for collection, a sub surface salvage plan will be developed in consultation with the Aboriginal community with reference to the Code.

5.4.2. Salvage/Inspection Timeframes

Mt Arthur Coal will identify suitable Aboriginal community representatives and an archaeologist to conduct the salvage/inspection work, and, where possible will work to a timeline suitable for all parties. It should be recognised that some salvages may be urgent, and timelines will be much shorter than normal.

5.4.3. Process for Designation of Areas as ‘Cleared for Site Disturbance’

Following site inspection/salvage, the field archaeologist in consultation with the attending Aboriginal community representatives will sign a release form that the area has been cleared for ground disturbance works. The release form will have Global Positioning System (GPS) coordinates recorded for the approximate boundary of the cleared area.

Mt Arthur Coal will maintain a GIS database on site that identifies sites that have been cleared for site disturbance. This will be a key tool in approving ground disturbance, and will assist in making sure that heritage areas are not disturbed prior to salvage.

If areas of importance are close to operations, a risk assessment will be conducted, and further controls, such as flagging, bunding or fencing will be considered in order to protect heritage items from disturbance.

5.4.4. Keeping Place

As committed in the EA, Mt Arthur Coal will fund and construct a Keeping Place during the period of this Project in consultation with Aboriginal groups. The Keeping Place will store artefacts salvaged as part of the Project.

Sites collected will be appropriately stored until the Keeping Place is established.

Following completion of analyses and reporting, Aboriginal heritage material recovered from collections and salvage excavations will be transferred immediately to the secure storage area.

Access to the collections will be available to Aboriginal persons and approved cultural heritage advisors who demonstrate a valid cause for inspection – such as viewing for cultural, educational and research purposes.

A register of persons requesting access to the material will be maintained with the collections.

Mt Arthur Coal has a large, long life resource. As such, artefacts will be stored securely for the life of mine. As part of rehabilitation, closure and decommissioning processes, the aboriginal community will be involved in decisions around the ongoing management of artefacts post mining.

5.4.5. Discovery of Previously Unknown Sites and Human Skeletal Remains

If any previously unrecorded Aboriginal heritage material is uncovered during the construction of surface facilities or mining activities, the material will be recorded and collected according to the collection procedure in section 5.4.1 above. A new site card will be lodged with OEHL in compliance with section 89A of the NPW Act.

In the event that human remains (skeletal material) or significant previously identified artifacts are discovered, the following procedure is to be followed:

Table 4: Artefact discovery process

Chance artefact discovery	Human remains discovery	Procedure
✓	✓	when suspected human remains or aboriginal artefacts are exposed, all work is to cease immediately in the near vicinity of the find location;
✓	✓	an area of 50 m radius is to be cordoned off by temporary fencing around the exposed suspected human remains site - work can continue outside of this area as long as there is no risk of interference to the human remains or the assessment of human remains;
✓	✓	notify the Environment and Community Manager immediately (Ph. 6544 5840);
	✓	notify the Police (Muswellbrook Police Station Ph. 6542 6999) at the earliest practicable time;
✓		Determine the significance of the artifact discovery, in consultation with archaeologist or representative from aboriginal community.
	✓	Environment and Community Manager or delegate should contact OEHL's Environment line on 131 555;

Chance artefact discovery	Human remains discovery	Procedure
	✓	if the remains are Aboriginal remains, consult the Aboriginal stakeholders; and
✓		Determine appropriate documentation and salvage of artifacts based on this management plan, where possible in consultation with aboriginal stakeholders.
✓	✓	Do not recommence work at the location until all legal requirements and the reasonable requirements of OEH and the Aboriginal stakeholders have been adequately addressed.
	✓	Where possible, Aboriginal stakeholders wish to be consulted over the selection of a physical anthropologist expert during the assessment of Aboriginal remains.

5.5. Access for Aboriginal community

The Aboriginal community may wish to access certain sites and areas within the mining lease for educational, cultural, or other uses. Such use is constrained by BHP Billiton’s responsibilities under the relevant Mining and OH&S legislation regarding access and safety. The most appropriate area for use is the Thomas Mitchell Drive heritage offset area.

Uses by the Aboriginal community may include flora and fauna use/management, and educational and/or cultural uses. Aboriginal sites within the area provide an opportunity to educate both the Aboriginal and wider community about the traditional lives of ancestral Aboriginal people. The natural resources of the area also provide opportunities for education regarding traditional Aboriginal use of the land, flora and fauna, and other resources.

Appropriate uses and access protocols will be developed and agreed upon by the local Aboriginal groups and BHP Billiton.

5.6. Incident/Complaint Response

All complaints received in relation to this AHMP will be responded to in accordance with *MAC-ENC-PRO-042 Community and Environmental Incident Response and Reporting*. This procedure provides details on how to receive, handle, respond to, and record and action any community complaints.

Upon receipt of a complaint from the Community, preliminary investigations will commence as soon as practicable to determine the likely causes of the complaint using specific information associated with the complaint. A response will be provided as soon as practicable, which may include the provision of relevant monitoring data.

Every effort will be made to ensure that concerns are addressed in a manner that facilitates a mutually acceptable outcome for both the complainant and Mt Arthur Coal.

In the event of an incident or complaint resulting in a non-compliance with Aboriginal Heritage Project Approval conditions and this plan, the following protocol will be followed:

1. Check and validate the incident or data which indicates a non-compliance with criterion or conditions.
2. Notify the representatives of the aboriginal community and DP&I as soon as practicable after awareness of the incident.
3. A preliminary investigation will be undertaken to establish the cause(s) and determine whether changes to the Aboriginal heritage management system are required. This will involve the consideration of the incident in conjunction with:
 - a) activities being undertaken at the time;
 - b) monitoring results;
 - c) on-going maintenance, general monitoring of the heritage item;
 - d) comparison of results with other heritage items at nearby locations;
 - e) changes to the land use/activities being undertaken on and surrounding the heritage items;

A detailed preliminary investigation report would be compiled and submitted to the representatives of the Aboriginal Community, DP&I within 7 days of becoming aware of the incident.

4. If the preliminary investigation report recommends further detailed investigations these would be conducted in consultation with the representatives of the aboriginal community, and DP&I.
5. Remedial/compensatory measures will be developed in consultation with representatives of the aboriginal community and DP&I and implemented in response to the outcomes of the investigations.
6. Monitoring would be implemented to measure the effectiveness of remedial measures.

5.7. Incident/Complaints Register

Mt Arthur Coal will record all community complaints, incidents and non-compliance items into the site event management database. The database is maintained to include reporting, incident/event notification, close out action tracking, inspections, and audits results.

5.8. Training and Development

Ground disturbance processes, aboriginal cultural heritage processes and the importance of complying to procedures and standards set at Mt Arthur Coal are all covered in site induction packages, and will be refreshed on an as needs basis.

In particular, remaining on formed tracks, and the process to be followed in order to create new disturbance will be included in induction and training processes.

6. Reporting

Mt Arthur Coal will report on the performance of the AHMP in the Annual Environmental Management Report (AEMR), which will be posted on the company website, and provide regular updates to members of the Community Consultative Committee (CCC).

7. Review

This AHMP will be reviewed and if necessary revised to the satisfaction of the Director-General (and relevant government authorities and Aboriginal community) in accordance with Condition 4 of Schedule 5 of the Project Approval:

- within 3 months of the submission of an:
 - annual review under Condition 3, Schedule 5 of the Project Approval;
 - incident report under Condition 7, Schedule 5 of the Project Approval;
 - Independent Environmental Audit report under Condition 9, Schedule 5 of the Project Approval;
 - Modification to the conditions of the Project Approval.
- Following significant incidents at Mt Arthur Coal relating to Aboriginal Cultural Heritage;
- In response to a relevant change in technology or legislation; or
- Where a risk assessment identifies the requirement to alter the plan.

Appendix 1: Project Approval Requirements

Table 1: Project Approval and EPL Conditions associated with Aboriginal Heritage Management Plan

Consent/Licence	Schedule : Condition	Condition/Requirement	Management Plan Section
Open Cut Consolidation Project Approval	3:45	<p>HERITAGE Heritage Management Plan</p> <p>45. The Proponent shall prepare and implement a Heritage Management Plan for the project to the satisfaction of the Director-General. This plan must:</p> <p>(a) be prepared in consultation with OEH, the Aboriginal community, the Heritage Branch, Council, local historical organisations and relevant landowners, and be submitted to the Director-General for approval by the end of March 2011;</p> <p>(b) include the following for the management of Aboriginal heritage on site:</p> <ul style="list-style-type: none"> • a plan of management for the Thomas Mitchell Drive Offset Area; and • a program/procedures for: <ul style="list-style-type: none"> ○ salvage, excavation and/or management of Aboriginal sites and potential archaeological deposits within the project disturbance area; ○ protection and monitoring of Aboriginal sites outside the project disturbance area, including the 10 scarred trees and 3 axe grinding grooves identified on the site; ○ managing the discovery of any new Aboriginal objects or skeletal remains during the project; ○ maintaining and managing access to archaeological sites by the Aboriginal community; and ○ ongoing consultation and involvement of the Aboriginal communities in the conservation and management of Aboriginal cultural heritage on the site; and <p>(c) include the following for the management of other historic heritage on site:</p> <ul style="list-style-type: none"> • conservation management plans for the Edinglassie and Rous Lench homesteads; • a detailed plan for the relocation of the Beer Homestead, including provision for a landscape study to determine the most appropriate location and an architectural report to determine the most sympathetic method for relocation; and • a program/procedures for: <ul style="list-style-type: none"> ○ photographic and archival recording of potentially affected heritage items; ○ protection and monitoring of heritage items outside the project disturbance area; ○ monitoring, notifying and managing the effects of blasting on potentially affected heritage items; and ○ additional archaeological excavation and/or recording of any significant heritage items requiring demolition.” 	<p>This Plan 2.2</p> <p>5.1</p> <p>5.1 5.2</p> <p>5.45 5.5 2.2 & 2.3</p> <p>Refer to European Heritage Management Plan</p>
Open Cut Consolidation Project Approval	5:2	<p>Management Plan Requirements</p> <p>2. The Proponent shall ensure that the management plans required under this approval are prepared in accordance with any relevant guidelines, and include:</p> <p>(a) detailed baseline data;</p> <p>(b) a description of:</p> <ul style="list-style-type: none"> • the relevant statutory requirements (including any relevant approval, licence or lease conditions); • any relevant limits or performance measures/criteria; • the specific performance indicators that are proposed to be used to judge the performance of, or guide the implementation of, the project or any management measures; <p>(c) a description of the measures that would be implemented to comply with the relevant statutory requirements, limits, or performance</p>	<p>Figure 1, Tables 1, 2, 3 & 4 & Appendix 3</p> <p>1.1, 4.0 Appendix 1</p> <p>5.6 & 5.7</p> <p>5.2 5.0</p>

Consent/Licence	Schedule : Condition	Condition/Requirement	Management Plan Section
		General. <i>Note: This is to ensure the strategies, plans and programs are updated on a regular basis, and incorporate any recommended measures to improve the environmental performance of the project.</i>	
Open Cut Consolidation Project Approval	5:7	REPORTING Incident Reporting 7. The Proponent shall notify the Director-General and any other relevant agencies of any incident associated with the project as soon as practicable after the Proponent becomes aware of the incident. Within 7 days of becoming aware of the incident, the Proponent shall provide the Director-General and any relevant agencies with a detailed report on the incident.	5.6 5.7
Open Cut Consolidation Project Approval	5:8	Regular Reporting 8. The Proponent shall provide regular reporting on the environmental performance of the project on its website, in accordance with the reporting arrangements in any plans or programs approved under the conditions of this approval, and to the satisfaction of the Director-General.	6.0
Open Cut Consolidation Project Approval	5:11	ACCESS TO INFORMATION 11. From the end of December 2010, the Proponent shall: (a) make the following information publicly available on its website: <ul style="list-style-type: none"> • a copy of all current statutory approvals for the project; • a copy of the current environmental management strategy and associated plans and programs; • a summary of the monitoring results of the project, which have been reported in accordance with the various plans and programs approved under the conditions of this approval; • a complaints register, which is to be updated on a monthly basis; • a copy of the minutes of CCC meetings; • a copy of any Annual Reviews (over the last 5 years); • a copy of any Independent Environmental Audit, and the Proponent's response to the recommendations in any audit; • any other matter required by the Director-General; and (b) keep this information up to date, to the satisfaction of the Director-General.	available on Mt Arthur Coal Website

Note: EHMP refer to MAC-ENC-MTP-018 European Heritage Management Plan and BMP refer to MAC-ENC-MTP-015 Blast Management Plan

Appendix 2: Consulted Aboriginal Stakeholder Groups

Name of Group	Abbreviation	Primary Contact
Aboriginal Native Title Consultants	ANTC	John & Margaret Matthews
Awabakal Descendents Traditional Owners Aboriginal Corporation	ADTOAC	Shane Frost
Awabakal Traditional Owners Aboriginal Corporation	ATOAC	Kerrie Brauer & Dene Hawkin
Black Creek Aboriginal Corporation	BCAC	N/A
Bullen Bullen Consultants	BBC	Lloyd Matthews
Cacatua Cultural Consultants	CAC	George Sampson
Culturally Aware	CAW	Tracey Skene
Gidawaa Walang Cultural Heritage Consultancy	GWCHC	Annie Hickey
Giwirr Consultants	GC	Rodney Matthews
Hunter Valley Aboriginal Coproration	HVAC	Barry Stair
Hunter Valley Cultural Consultants	HVCC	Christine Matthews
Hunter Valley Cultural Surveying	HVCS	Luke & Pansy Hickey
Hunter Traditional Owners Environmental Management	HTOEM	Rick & Cara Coles
Hunter Valley Natural & Cultural Resources Management	HVNCRM	David French
Lower Hunter Wonnarua Council Inc.	LHWC	Tom Miller
Lower Wonnaruah Tribal Consultancy	LWTC	Barry Anderson
Mimagen Wajaar	MW	N/A
Mingga Consultants	MC	Mick Clifford
Mur-Roo-Ma	MRM	N/A
Muswellbrook Cultural Consultants	MCC	Brian Horton
Nur-Run-Gee	NRG	N/A
St Clair Singleton Aboriginal Corporation	SCSAC	N/A

Name of Group	Abbreviation	Primary Contact
Ungooroo Cultural and Community Services	UCCS	Rhonda Ward
Upper Hunter Heritage Consultants	UHHC	Melissa Matthews
Upper Hunter Wonnarua Council	UHWC	Rhonda Perry
Valley Culture	VC	Larry Van Vliet
Wanaruah Aboriginal Custodians Corporation	WACC	Barbara Foot
Wanaruah Local Aboriginal Land Council	WLALC	Suzie Worth
Wattaka Wonnarua CC Service	WWCCS	Des Hickey
Wonn1 Contracting	W1C	Arthur Fletcher
Wonnarua Culture Heritage	WCH	Gordon Griffith
Wonnarua Nations Aboriginal Corporation	WNAC	Sandra Miller
Wonnaruah Elders Council	WCE	Rhoda Perry
Yamuloong Group Initiatives	YGI	Sean Gordon
Yarrawalk	Y	Barry McTaggart
Yinarr Cultural Services	YCS	Kathleen Steward-Kinchela

Appendix 3: Known Archaeological Sites within the Mt Arthur EA Boundary

AHIMS Site #	AHIMS Site Name	Original Datum	Zone	AGD Easting	AGD Northing	MGA Easting	MGA Northing	Validity	AHIP Permit	Original Features	Review Feature Type	Original Recorder	AHIMS Site Types	AHIMS Reports #
37-2-0002	MAN 55;Mount Arthur North;	AGD	56	295900	6420500	296005	6420689	Valid	1384	AFT :-	!AFT	Koettig	Artefact Scatter	
37-2-0003	Man10;Mount Arthur North;	AGD	56	300400	6419600	300505	6419789	Valid	0	AFT :-	!AFT	Koettig	Artefact Scatter	98357, 98373
37-2-0005	Man 9;Mount Arthur North;	AGD	56	300400	6419500	300505	6419689	Valid	0	AFT :-	!AFT	Koettig	Artefact Scatter	98357, 98373
37-2-0007	Man 8;Mount Arthur North;	AGD	56	300500	6419400	300605	6419589	Valid	0	AFT :-	!AFT	Koettig	Artefact Scatter	98357, 98373
37-2-0008	Man 7;Mount Arthur North;	AGD	56	300400	6419400	300505	6419589	Valid	0	AFT :-	!AFT	Koettig	Artefact Scatter	98357, 98373
37-2-0009	Man 6;Mount Arthur North;	AGD	56	300500	6419300	300605	6419489	Valid	0	AFT :-	!AFT	Koettig	Artefact Scatter	98357, 98373
37-2-0011	Man 5;Mount Arthur North;	AGD	56	300400	6418600	300505	6418789	Valid	1384	AFT :-	!AFT	Koettig	Artefact Scatter	98357, 98373
37-2-0013	Man 4;Mount Arthur North;	AGD	56	300600	6419200	300705	6419389	Valid	0	AFT :-	!AFT	Koettig	Artefact Scatter	98357, 98373
37-2-0014	Man 3;Mount Arthur North;	AGD	56	300500	6419100	300605	6419289	Valid	0	AFT :-	!AFT	Koettig	Artefact Scatter	98357, 98373
37-2-0015	Man 1;Mount Arthur North;	AGD	56	300600	6418400	300705	6418589	Valid	1384	AFT :-	!AFT	Koettig	Artefact Scatter	98357, 98373
37-2-0021	Upper Saddler's Creek;	AGD	56	298636	6413424	298741	6413613	Valid	0	AFT :-	!AFT	ASRSYS	Artefact Scatter	101010
37-2-0022	Upper Saddler's Creek;	AGD	56	300090	6413909	300195	6414098	Valid	0	AFT :-	!AFT	ASRSYS	Artefact Scatter	4525, 101010
37-2-0023	White's Creek	AGD	56	300330	6420682	300435	6420871	Valid	0	AFT :-	!AFT	Dyall	Artefact Scatter	310, 98357, 98373
37-2-0024	Upper Saddler's Creek	AGD	56	300437	6414921	300542	6415110	Valid	0	AFT :-	!AFT	Dyall	Artefact Scatter	310, 4525, 101010
37-2-0025	White's Creek;	AGD	56	300628	6419407	300733	6419596	Valid	0	AFT :-	!AFT	Dyall	Artefact Scatter	310, 98357, 98373
37-2-0026	Upper Saddler's Creek;	AGD	56	300791	6415568	300896	6415757	Valid	0	AFT :-	!AFT	Dyall	Artefact Scatter	310, 4525, 98357, 98373, 101010
37-2-0027	White's Creek	AGD	56	301534	6419881	301639	6420070	Valid	0	AFT :-	!AFT	Dyall	Artefact Scatter	310, 98357, 98373
37-2-0052	MAN 13;MT Arthur North;	AGD	56	300000	6420600	300105	6420789	Valid	147	AFT :-	!AFT	Koettig	Artefact Scatter	1203, 1204, 98357, 98373
37-2-0054	Man 14;Jerrys Plains;	AGD	56	300100	6420600	300205	6420789	Valid	147	AFT :-	!AFT	Koettig	Artefact Scatter	1203, 1204, 98357, 98373
37-2-0055	MAN 15;Mt Arthur North;	AGD	56	299900	6420800	300005	6420989	Valid	147	AFT :-	!AFT	Koettig	Artefact Scatter	1203, 1204
37-2-0056	MAN 16;Mt Arthur North;	AGD	56	299900	6420900	300005	6421089	Valid	147	AFT :-	!AFT	Koettig	Artefact Scatter	1203, 1204
37-2-0057	MAN 17;Mt Arthur North;	AGD	56	299700	6421100	299805	6421289	Valid	147	AFT :-	!AFT	Koettig	Artefact Scatter	1203, 1204
37-2-0058	Man 18;Jerrys Plains;	AGD	56	299500	6421200	299605	6421389	Valid	147	AFT :-	!AFT	Koettig	Artefact Scatter	1203, 1204
37-2-0059	Man 19;Jerrys Plains;	AGD	56	299400	6421300	299505	6421489	Valid	147	AFT :-	!AFT	Koettig	Artefact Scatter	1203, 1204
37-2-0060	Man 20;	AGD	56	299300	6421400	299405	6421589	Valid	0	AFT :-	!AFT	Koettig	Artefact Scatter	936, 1203, 1204
37-2-0061	MAN 21;Mt Arthur North;	AGD	56	300150	6420550	300255	6420739	Valid	147	AFT :-	!AFT	Koettig	Artefact Scatter	1203, 1204, 98357, 98373
37-2-0097	The Pimple;Drayton 3;	AGD	56	302687	6416884	302792	6417073	Valid	0	AFT :-	!AFT	Dyall	Artefact Scatter	98357, 98373
37-2-0099	The Pimple;Drayton 2;	AGD	56	300859	6416850	300964	6417039	Valid	0	AFT :-	!AFT	Dyall	Artefact Scatter	98357, 98373
37-2-0100	The Pimple;Drayton 1;	AGD	56	301773	6416867	301878	6417056	Valid	0	AFT :-	!AFT	Dyall	Artefact Scatter	98357, 98373
37-2-0106	Upper Saddler's Creek;	AGD	56	298636	6413424	298741	6413613	Valid	0	AFT :-	!AFT	ASRSYS	Artefact Scatter	310, 101010
37-2-0108	Mt Arthur;	AGD	56	296219	6420422	296324	6420611	Valid	0	AFT :-	!AFT	Dyall	Artefact Scatter	316
37-2-0109	Quarry Creek;	AGD	56	294407	6419473	294512	6419662	Valid	0	AFT :-	!AFT	Dyall	Artefact Scatter	316, 101010
37-2-0110	Mt Arthur;	AGD	56	297800	6417000	297905	6417189	Valid	0	GDG :-	GDG	Dyall	Grinding Groove	316
37-2-0111	Fairford 1	AGD	56	298600	6417700	298705	6417889	Valid	0	GDG :-	GDG	Dyall	Grinding Groove	316
37-2-0112	Whites Creek	AGD	56	298600	6421900	298705	6422089	Valid	0	AFT :-	!AFT	Dyall	Artefact Scatter	316
37-2-0114	The Pimple Whites Creek	AGD	56	300500	6419200	300605	6419389	Valid	0	AFT :-	!AFT	Dyall	Artefact Scatter	316, 98357, 98373
37-2-0115	The Pimple;	AGD	56	300400	6419200	300505	6419389	Valid	0	AFT :-	!AFT	Dyall	Artefact Scatter	316, 98357, 98373
37-2-0116	Quarry Creek	AGD	56	293842	6420377	293947	6420566	Valid	0	AFT :-	!AFT	Dyall	Artefact Scatter	316, 101010
37-2-0117	Quarry Creek;	AGD	56	294888	6418202	294993	6418391	Valid	0	AFT :-	!AFT	Dyall	Artefact Scatter	316
37-2-0118	Fairford 2	AGD	56	294840	6420762	294945	6420951	Valid	0	AFT :-	!AFT	Dyall	Artefact Scatter	316
37-2-0119	Fairford 3	AGD	56	295744	6421328	295849	6421517	Valid	0	AFT :-	!AFT	Dyall	Artefact Scatter	316
37-2-0120	Fairford 4	AGD	56	295936	6420874	296041	6421063	Valid	0	AFT :-	!AFT	Dyall	Artefact Scatter	316
37-2-0121	Fairford 5	AGD	56	296503	6419878	296608	6420067	Valid	0	AFT :-	!AFT	Dyall	Artefact Scatter	316
37-2-0122	Whites Creek.	AGD	56	298600	6421600	298705	6421789	Valid	0	AFT :-	!AFT	Dyall	Artefact Scatter	316
37-2-0123	Whites Creek;	AGD	56	299300	6421400	299405	6421589	Valid	0	AFT :-	!AFT	Dyall	Artefact Scatter	316
37-2-0124	Quarry Site;	AGD	56	294800	6418600	294905	6418789	Valid	0	AFT :-	!AFT	Dyall	Artefact Scatter	316, 101010

AHIMS Site #	AHIMS Site Name	Original Datum	Zone	AGD Easting	AGD Northing	MGA Easting	MGA Northing	Validity	AHIP Permit	Original Features	Review Feature Type	Original Recorder	AHIMS Site Types	AHIMS Reports #
37-2-0125	Eden Valley;	AGD	56	295082	6422504	295187	6422693	Valid	1384	AFT : -	!AFT	Dyall	Artefact Scatter	316
37-2-0126	Mt Arthur	AGD	56	296004	6417216	296109	6417405	Valid	0	AFT : -	!AFT	Dyall	Artefact Scatter	316
37-2-0127	Quarry Creek;	AGD	56	295400	6418600	295505	6418789	Valid	0	AFT : -	!AFT	Dyall	Artefact Scatter	316, 1203
37-2-0128	Mt Arthur;	AGD	56	297600	6418400	297705	6418589	Valid	0	AFT : -	!AFT	Dyall	Artefact Scatter	316
37-2-0132	Fairford 6	AGD	56	294373	6421302	294478	6421491	Valid	0	AFT : -	!AFT	Dyall	Artefact Scatter	
37-2-0172	Bayswater; Bayswater No.2 Colliery Site 2	AGD	56	300998	6421200	301103	6421389	Valid	0	AFT : -	!AFT	Hughes	Artefact Scatter	
37-2-0173	Bayswater; Bayswater No.2 Colliery Site 1;	AGD	56	300190	6417500	300295	6417689	Valid	1384	AFT : -	!AFT	Hughes	Artefact Scatter	98357, 98373
37-2-0174	Quarry Creek;	AGD	56	293950	6419465	294055	6419654	Valid	0	AFT : -	!AFT	Dyall	Artefact Scatter	101010
37-2-0175	Whites Creek; North Arm;	AGD	56	300000	6420800	300105	6420989	Valid	0	AFT : -	!AFT	Dyall	Artefact Scatter	98357, 98373
37-2-0177	Quarry Creek;	AGD	56	295500	6418300	295605	6418489	Valid	670	AFT : -	!AFT	Unknown Author	Artefact Scatter	
37-2-0180	Whites Creek North Arm	AGD	56	300600	6419900	300705	6420089	Valid	0	AFT : -	!AFT	Dyall	Artefact Scatter	98357, 98373
37-2-0191	Whites Creek North Arm.	AGD	56	298600	6421600	298705	6421789	Valid	0	AFT : -	!AFT	Dyall	Artefact Scatter	
37-2-0192	Quarry Creek;	AGD	56	295400	6417800	295505	6417989	Valid	0	AFT : -	!AFT	Dyall	Artefact Scatter	316
37-2-0193	Whites Creek North Arm	AGD	56	299300	6418600	299405	6418789	Valid	0	AFT : -	!AFT	Dyall	Artefact Scatter	
37-2-0271	MAN 91;Mt Arthur North;	AGD	56	295200	6419800	295305	6419989	Valid	0	AFT : -	!AFT	Koettig	Artefact Scatter	
37-2-0281	MAN 7;Mt Arthur North;	AGD	56	300400	6419400	300505	6419589	Valid	0	AFT : -	!AFT	Koettig	Artefact Scatter	1203, 1204, 98357, 98373
37-2-0282	Saddlers Creek;	AGD	56	297150	6412770	297255	6412959	Valid	147	AFT : -	!AFT	Dyall	Artefact Scatter	1203, 1204, 101010
37-2-0283	Saddlers Creek;	AGD	56	297130	6412750	297235	6412939	Valid	148	AFT : -	!AFT	Dyall	Artefact Scatter	1203, 1204, 101010
37-2-0284	Saddlers Creek;	AGD	56	297740	6413050	297845	6413239	Valid	147	AFT : -	!AFT	Dyall	Artefact Scatter	1203, 1204, 101010
37-2-0285	Saddlers Creek;	AGD	56	297780	6413080	297885	6413269	Valid	148	AFT : -	!AFT	Dyall	Artefact Scatter	1203, 1204, 101010
37-2-0286	Saddlers Creek;	AGD	56	297690	6413040	297795	6413229	Valid	147	AFT : -	!AFT	Dyall	Artefact Scatter	1203, 1204, 101010
37-2-0288	MAN 11;Mt Arthur North;	AGD	56	300300	6419700	300405	6419889	Valid	147	AFT : -	!AFT	Koettig	Artefact Scatter	1203, 1204, 98357, 98373
37-2-0290	MAN 12;Mt Arthur North;	AGD	56	300000	6420500	300105	6420689	Valid	147	AFT : -	!AFT	Koettig	Artefact Scatter	1203, 1204, 98357, 98373
37-2-0291	MAN 55;Mt Arthur North;	AGD	56	295900	6420500	296005	6420689	Valid	1384	AFT : -	!AFT	Koettig	Artefact Scatter	1203, 1204
37-2-0292	MAN 56;Mt Arthur North;	AGD	56	296200	6420600	296305	6420789	Valid	0	AFT : -	!AFT	Koettig	Artefact Scatter	1203, 1204
37-2-0293	MAN 93;Mt Arthur North;	AGD	56	294500	6419400	294605	6419589	Valid	0	AFT : -	!AFT	Koettig	Artefact Scatter	1203, 1204, 101010
37-2-0294	MAN 92;Mt Arthur North;	AGD	56	294400	6419300	294505	6419489	Valid	0	AFT : -	!AFT	Koettig	Artefact Scatter	1203, 1204, 101010
37-2-0295	MAN 49;Mt Arthur North;	AGD	56	296700	6419600	296805	6419789	Valid	147	AFT : -	!AFT	Koettig	Artefact Scatter	1203, 1204
37-2-0296	MAN 50;Mt Arthur North;	AGD	56	296800	6419500	296905	6419689	Valid	147	AFT : -	!AFT	Koettig	Artefact Scatter	1203, 1204
37-2-0297	MAN 51;Mt Arthur North;	AGD	56	296800	6419400	296905	6419589	Valid	147	AFT : -	!AFT	Koettig	Artefact Scatter	1203, 1204
37-2-0298	MAN 52;Mt Arthur North;	AGD	56	296500	6419600	296605	6419789	Valid	147	AFT : -	!AFT	Koettig	Artefact Scatter	1203, 1204
37-2-0299	MAN 53;Mt Arthur North;	AGD	56	296500	6419800	296605	6419989	Valid	147	AFT : -	!AFT	Koettig	Artefact Scatter	1203, 1204
37-2-0300	MAN 54;Mt Arthur North;	AGD	56	296500	6420100	296605	6420289	Valid	147	AFT : -	!AFT	Koettig	Artefact Scatter	1203, 1204
37-2-0301	MAN 57;Mt Arthur North;	AGD	56	296100	6420500	296205	6420689	Valid	0	AFT : -	!AFT	Koettig	Artefact Scatter	1203, 1204
37-2-0302	MAN 58;Mt Arthur North;	AGD	56	296000	6420700	296105	6420889	Valid	0	AFT : -	!AFT	Koettig	Artefact Scatter	1203, 1204
37-2-0303	MAN 59;Mt Arthur North;	AGD	56	295900	6420600	296005	6420789	Valid	0	AFT : -	!AFT	Koettig	Artefact Scatter	1203, 1204
37-2-0304	MAN 60;Mt Arthur North;	AGD	56	295900	6420600	296005	6420789	Valid	0	AFT : -	!AFT	Koettig	Artefact Scatter	1203, 1204
37-2-0305	MAN 61;Mt Arthur North;	AGD	56	295900	6420700	296005	6420889	Valid	0	AFT : -	!AFT	Koettig	Artefact Scatter	1203, 1204
37-2-0306	MAN 62;Mt Arthur North;	AGD	56	296000	6420800	296105	6420989	Valid	147	AFT : -	!AFT	Koettig	Artefact Scatter	1203, 1204
37-2-0307	MAN 63;Mt Arthur North;	AGD	56	295900	6420800	296005	6420989	Valid	147	AFT : -	!AFT	Koettig	Artefact Scatter	1203, 1204
37-2-0308	MAN 64;Mt Arthur North;	AGD	56	295800	6420800	295905	6420989	Valid	0	AFT : -	!AFT	Koettig	Artefact Scatter	1203, 1204
37-2-0309	MAN 65;Mt Arthur North;	AGD	56	295900	6420900	296005	6421089	Valid	147	AFT : -	!AFT	Koettig	Artefact Scatter	1203, 1204
37-2-0310	MAN 66;Mt Arthur North;	AGD	56	295900	6421000	296005	6421189	Valid	147	AFT : -	!AFT	Koettig	Artefact Scatter	1203, 1204
37-2-0311	MAN 67;Mt Arthur North;	AGD	56	296000	6421200	296105	6421389	Valid	147	AFT : -	!AFT	Koettig	Artefact Scatter	1203, 1204
37-2-0312	MAN 68;Mt Arthur North;	AGD	56	295900	6421300	296005	6421489	Valid	147	AFT : -	!AFT	Koettig	Artefact Scatter	1203, 1204
37-2-0313	MAN 69;Mt Arthur North;	AGD	56	295800	6421500	295905	6421689	Valid	147	AFT : -	!AFT	Koettig	Artefact Scatter	1203, 1204
37-2-0314	MAN 70;Mt Arthur North;	AGD	56	295700	6420700	295805	6420889	Valid	0	AFT : -	!AFT	Koettig	Artefact Scatter	1203, 1204
37-2-0315	MAN 71;Mt Arthur North;	AGD	56	298600	6421400	298705	6421589	Valid	147	AFT : -	!AFT	Koettig	Artefact Scatter	1203, 1204
37-2-0316	MAN 72;Mt Arthur North;	AGD	56	298200	6420900	298305	6421089	Valid	147	AFT : -	!AFT	Koettig	Artefact Scatter	1203, 1204
37-2-0317	MAN 73;Mt Arthur North;	AGD	56	298200	6420800	298305	6420989	Valid	147	AFT : -	!AFT	Koettig	Artefact Scatter	1203, 1204
37-2-0318	MAN 74;Mt Arthur North;	AGD	56	298200	6420600	298305	6420789	Valid	147	AFT : -	!AFT	Koettig	Artefact Scatter	1203, 1204

AHIMS Site #	AHIMS Site Name	Original Datum	Zone	AGD Easting	AGD Northing	MGA Easting	MGA Northing	Validity	AHIP Permit	Original Features	Review Feature Type	Original Recorder	AHIMS Site Types	AHIMS Reports #
37-2-0319	MAN 75;Mt Arthur North;	AGD	56	298400	6421400	298505	6421589	Valid	147	AFT :-	!AFT	Koettig	Artefact Scatter	1203, 1204
37-2-0320	MAN 76;Mt Arthur North;	AGD	56	298500	6421500	298605	6421689	Valid	147	AFT :-	!AFT	Koettig	Artefact Scatter	1203, 1204
37-2-0321	MAN 77;Mt Arthur North;	AGD	56	298300	6419700	298405	6419889	Valid	147	AFT :-	!AFT	Koettig	Artefact Scatter	1203, 1204
37-2-0322	MAN 78;Mt Arthur North;	AGD	56	298250	6419000	298355	6419189	Valid	147	AFT :-	!AFT	Koettig	Artefact Scatter	1203, 1204
37-2-0323	MAN 79;Mt Arthur North;	AGD	56	298200	6419100	298305	6419289	Valid	147	AFT :-	!AFT	Koettig	Artefact Scatter	1203, 1204
37-2-0324	MAN 80;Mt Arthur North;	AGD	56	299000	6423500	299105	6423689	Valid	147	AFT :-	!AFT	Koettig	Artefact Scatter	1203, 1204
37-2-0325	MAN 81;Mt Arthur North;	AGD	56	298900	6423800	299005	6423989	Valid	147	AFT :-	!AFT	Koettig	Artefact Scatter	1203, 1204
37-2-0326	MAN 82;Mt Arthur North;	AGD	56	296700	6423700	296805	6423889	Valid	0	AFT :-	!AFT	Koettig	Artefact Scatter	1203, 1204
37-2-0327	MAN 83;Mt Arthur North;	AGD	56	296700	6423600	296805	6423789	Valid	0	AFT :-	!AFT	Koettig	Artefact Scatter	1203, 1204
37-2-0328	MAN 84;Mt Arthur North;	AGD	56	296800	6423600	296905	6423789	Valid	0	AFT :-	!AFT	Koettig	Artefact Scatter	1203, 1204, 101050
37-2-0329	MAN 85;Mt Arthur North;	AGD	56	296800	6423800	296905	6423989	Valid	147	AFT :-	!AFT	Koettig	Artefact Scatter	1203, 1204
37-2-0330	MAN 86;Mt Arthur North;	AGD	56	296700	6423800	296805	6423989	Valid	0	AFT :-	!AFT	Koettig	Artefact Scatter	1203, 1204
37-2-0331	MAN 87;Mt Arthur North;	AGD	56	294800	6418500	294905	6418689	Valid	0	AFT :-	!AFT	Koettig	Artefact Scatter	1203, 1204, 101010
37-2-0332	MAN 81;Mt Arthur North;	AGD	56	295000	6418500	295105	6418689	Valid	0	AFT :-	!AFT	Koettig	Artefact Scatter	1203, 1204
37-2-0333	MAN 89;Mt Arthur North;	AGD	56	295200	6418100	295305	6418289	Valid	0	AFT :-	!AFT	Koettig	Artefact Scatter	1203, 1204
37-2-0334	MAN 90;Mt Arthur North;	AGD	56	295200	6418200	295305	6418389	Valid	0	AFT :-	!AFT	Koettig	Artefact Scatter	1203, 1204
37-2-0335	MAN 30;Mt Arthur North;	AGD	56	298750	6421750	298855	6421939	Valid	147	AFT :-	!AFT	Koettig	Artefact Scatter	1203, 1204
37-2-0338	MAN 33;Mt Arthur North;	AGD	56	298600	6422000	298705	6422189	Valid	147	AFT :-	!AFT	Koettig	Artefact Scatter	1203, 1204
37-2-0339	MAN 34;Mt Arthur North;	AGD	56	298500	6421900	298605	6422089	Valid	147	AFT :-	!AFT	Koettig	Artefact Scatter	1203, 1204
37-2-0340	MAN 35;Mt Arthur North;	AGD	56	298500	6422100	298605	6422289	Valid	147	AFT :-	!AFT	Koettig	Artefact Scatter	1203, 1204
37-2-0341	MAN 36;Mt Arthur North;	AGD	56	298400	6422100	298505	6422289	Valid	147	AFT :-	!AFT	Koettig	Artefact Scatter	1203, 1204
37-2-0342	MAN 42;Mt Arthur North;	AGD	56	296400	6422400	296505	6422589	Valid	147	AFT :-	!AFT	Koettig	Artefact Scatter	1203, 1204
37-2-0343	MAN 41;Mt Arthur North;	AGD	56	297100	6422100	297205	6422289	Valid	147	AFT :-	!AFT	Koettig	Artefact Scatter	1203, 1204
37-2-0344	MAN 40;Mt Arthur North;	AGD	56	297500	6421900	297605	6422089	Valid	147	AFT :-	!AFT	Koettig	Artefact Scatter	1203, 1204
37-2-0345	MAN 37;Mt Arthur North;	AGD	56	298300	6422200	298405	6422389	Valid	147	AFT :-	!AFT	Koettig	Artefact Scatter	1203, 1204
37-2-0346	MAN 38;Mt Arthur North;	AGD	56	298300	6422200	298405	6422389	Valid	147	AFT :-	!AFT	Koettig	Artefact Scatter	1203, 1204
37-2-0347	MAN 39;Mt Arthur North;	AGD	56	297900	6422000	298005	6422189	Valid	147	AFT :-	!AFT	Koettig	Artefact Scatter	1203, 1204
37-2-0349	MAN 26;Mt Arthur North;	AGD	56	299600	6421300	299705	6421489	Valid	147	AFT :-	!AFT	Koettig	Artefact Scatter	1203, 1204
37-2-0350	MAN 27;Mt Arthur North;	AGD	56	299500	6421400	299605	6421589	Valid	147	AFT :-	!AFT	Koettig	Artefact Scatter	1203, 1204
37-2-0351	MAN 28;Mt Arthur North;	AGD	56	299000	6421800	299105	6421989	Valid	147	AFT :-	!AFT	Koettig	Artefact Scatter	1203, 1204
37-2-0352	MAN 29;Mt Arthur North;	AGD	56	298800	6421700	298905	6421889	Valid	147	AFT :-	!AFT	Koettig	Artefact Scatter	1203, 1204
37-2-0353	MAN 48;Mt Arthur North;	AGD	56	297800	6421800	297905	6421989	Valid	0	AFT :-	!AFT	Koettig	Artefact Scatter	1203, 1204
37-2-0354	MAN 24;Mt Arthur North;	AGD	56	300000	6421100	300105	6421289	Valid	147	AFT :-	!AFT	Koettig	Artefact Scatter	1203, 1204
37-2-0355	MAN 23;Mt Arthur North;	AGD	56	300000	6421000	300105	6421189	Valid	147	AFT :-	!AFT	Koettig	Artefact Scatter	1203, 1204, 98357, 98373
37-2-0356	MAN 22;Mt Arthur North;	AGD	56	300100	6420800	300205	6420989	Valid	147	AFT :-	!AFT	Koettig	Artefact Scatter	1203, 1204, 98357, 98373
37-2-0357	MAN 47;Mt Arthur North;	AGD	56	298100	6421900	298205	6422089	Valid	147	AFT :-	!AFT	Koettig	Artefact Scatter	1203, 1204
37-2-0358	MAN 46;Mt Arthur North;	AGD	56	298200	6422000	298305	6422189	Valid	147	AFT :-	!AFT	Koettig	Artefact Scatter	1203, 1204
37-2-0359	Man 45;Mt Arthur North;	AGD	56	298300	6422000	298405	6422189	Valid	147	AFT :-	!AFT	Koettig	Artefact Scatter	1203, 1204
37-2-0360	MAN 44;Mt Arthur North;	AGD	56	298400	6422000	298505	6422189	Valid	147	AFT :-	!AFT	Koettig	Artefact Scatter	1203, 1204
37-2-0361	MAN 43;Mt Arthur North;	AGD	56	296600	6422100	296705	6422289	Valid	147	AFT :-	!AFT	Koettig	Artefact Scatter	1203, 1204
37-2-0481	MAS 129;Mt Arthur South;	AGD	56	299700	6413700	299805	6413889	Valid	0	AFT :-	!AFT	Koettig	Artefact Scatter	4525, 101010
37-2-0482	MAS 128;Mt Arthur South;	AGD	56	298300	6413200	298405	6413389	Valid	0	AFT :-	!AFT	Koettig	Artefact Scatter	101010
37-2-0483	MAS 130;Mt Arthur South;	AGD	56	299700	6413800	299805	6413989	Valid	0	AFT :-	!AFT	Koettig	Artefact Scatter	4525, 101010
37-2-0484	MAS 131;Mt Arthur South;	AGD	56	299800	6413700	299905	6413889	Valid	0	AFT :-	!AFT	Koettig	Artefact Scatter	4525, 101010
37-2-0485	MAS 132;Mt Arthur South;	AGD	56	299900	6413800	300005	6413989	Valid	0	AFT :-	!AFT	Koettig	Artefact Scatter	4525, 101010
37-2-0486	MAS 133;Mt Arthur South;	AGD	56	300000	6414100	300105	6414289	Valid	0	AFT :-	!AFT	Koettig	Artefact Scatter	4525, 101010
37-2-0487	MAS 134;Mt Arthur South;	AGD	56	300200	6415000	300305	6415189	Valid	0	AFT :-	!AFT	Koettig	Artefact Scatter	4525, 98357, 98373, 101010
37-2-0488	MAS 135;Mt Arthur South;	AGD	56	299900	6414100	300005	6414289	Valid	0	AFT :-	!AFT	Koettig	Artefact Scatter	4525, 101010
37-2-0489	MAS 136;Mt Arthur South;	AGD	56	299800	6413600	299905	6413789	Valid	0	AFT :-	!AFT	Koettig	Artefact Scatter	4525, 101010
37-2-0490	MAN 91;Mt Arthur North;	AGD	56	295200	6419800	295305	6419989	Valid	1384	AFT :-	!AFT	Koettig	Artefact Scatter	
37-2-0492	Man 2;Mt Arthur North;	AGD	56	300600	6418500	300705	6418689	Valid	1384	AFT :-	!AFT	Koettig	Artefact Scatter	98357, 98373
37-2-0494	MAN 2;Mount Arthur North;	AGD	56	300600	6418500	300705	6418689	Valid	1384	AFT :-	!AFT	Koettig	Artefact Scatter	98357, 98373

AHIMS Site #	AHIMS Site Name	Original Datum	Zone	AGD Easting	AGD Northing	MGA Easting	MGA Northing	Validity	AHIP Permit	Original Features	Review Feature Type	Original Recorder	AHIMS Site Types	AHIMS Reports #
37-2-0501	BMP 2	AGD	56	300160	6414930	300265	6415119	Valid	0	AFT :-	!AFT	Koettig, Hughes	Artefact Scatter	1097, 1203, 101010
37-2-0502	BMP 3;Jerrys Plain;	AGD	56	299180	6415080	299285	6415269	Valid	0	AFT :-	!AFT	Unknown Author	Artefact Scatter	1097, 4525
37-2-0503	BMP 4;Jerrys Plain;	AGD	56	294800	6415680	294905	6415869	Valid	0	AFT :-	!AFT	Unknown Author	Artefact Scatter	1097, 101010
37-2-0504	BMP 5;Muswellbrook;	AGD	56	291050	6416830	291155	6417019	Valid	0	AFT :-	!AFT	Unknown Author	Artefact Scatter	1097, 101010
37-2-0506	BMP 6;Muswellbrook;	AGD	56	290570	6417200	290675	6417389	Valid	0	AFT :-	!AFT	Unknown Author	Artefact Scatter	1097, 101010
37-2-0670	LBD1;	AGD	56	294500	6419300	294605	6419489	Valid	662	AFT :-	!AFT	James	Artefact Scatter	2698, 101010
37-2-0671	LBD2;	AGD	56	294400	6419100	294505	6419289	Valid	0	AFT :-	!AFT	James	Artefact Scatter	2698, 101010
37-2-0672	LBE1;	AGD	56	295400	6419100	295505	6419289	Valid	663	AFT :-	!IA	James	Isolated Artefact	2698
37-2-0673	LCC1;	AGD	56	293600	6418300	293705	6418489	Valid	0	AFT :-	!IA	James	Isolated Artefact	2698, 101010
37-2-0674	LCC3;	AGD	56	293800	6418200	293905	6418389	Valid	0	AFT :-	!AFT	James	Artefact Scatter	2698, 101010
37-2-0675	LCC4;	AGD	56	293900	6418200	294005	6418389	Valid	0	AFT :-	!AFT	James	Artefact Scatter	2698, 101010
37-2-0676	LCC5;	AGD	56	294100	6418600	294205	6418789	Valid	0	AFT :-	!AFT	James	Artefact Scatter	2698, 101010
37-2-0677	LCC6;	AGD	56	293900	6418000	294005	6418189	Valid	0	AFT :-	!AFT	James	Artefact Scatter	2698, 101010
37-2-0678	LCC7;	AGD	56	293700	6418000	293805	6418189	Valid	0	AFT :-	!AFT	James	Artefact Scatter	2698, 101010
37-2-0679	LCD1;	AGD	56	294400	6418900	294505	6419089	Valid	0	AFT :-	!AFT	James	Artefact Scatter	2698, 101010
37-2-0680	LCE1;	AGD	56	295100	6418200	295205	6418389	Valid	663	AFT :-	!AFT	James	Artefact Scatter	2698
37-2-0681	LCE3;	AGD	56	295100	6418500	295205	6418689	Valid	663	AFT :-	!AFT	James	Artefact Scatter	2698
37-2-0682	LCE4;	AGD	56	295100	6418400	295205	6418589	Valid	663	AFT :-	!IA	James	Isolated Artefact	2698
37-2-0683	LCE5;	AGD	56	295100	6418300	295205	6418489	Valid	663	AFT :-	!IA	James	Isolated Artefact	2698
37-2-0684	LDC1;	AGD	56	293700	6417900	293805	6418089	Valid	0	AFT :-	!AFT	James	Artefact Scatter	2698, 101010
37-2-0685	LDD1;	AGD	56	294700	6417300	294805	6417489	Valid	0	AFT :-	!AFT	James	Artefact Scatter	2698
37-2-0686	LDE1;	AGD	56	295400	6417300	295505	6417489	Valid	0	AFT :-	!AFT	James	Artefact Scatter	2698
37-2-0687	LDE2;	AGD	56	295700	6417300	295805	6417489	Valid	0	AFT :-	!IA	James	Isolated Artefact	2698
37-2-0688	LDE3;	AGD	56	295800	6417300	295905	6417489	Valid	663	AFT :-	!AFT	James	Artefact Scatter	2698
37-2-0689	LDE4;	AGD	56	295400	6417900	295505	6418089	Valid	0	AFT :-	!AFT	James	Artefact Scatter	2698
37-2-0690	LDE5;	AGD	56	295400	6417800	295505	6417989	Valid	0	AFT :-	!AFT	James	Artefact Scatter	2698
37-2-0691	LDF2;	AGD	56	296400	6417200	296505	6417389	Valid	663	AFT :-	!IA	James	Isolated Artefact	2698
37-2-0692	LDF4;	AGD	56	296500	6417300	296605	6417489	Valid	663	AFT :-	!AFT	James	Artefact Scatter	2698
37-2-0693	LDG1;	AGD	56	297800	6417000	297905	6417189	Valid	0	AFT :-	!AFT	James	Artefact Scatter	2698
37-2-0694	LEE1;	AGD	56	295990	6416370	296095	6416559	Valid	0	AFT :-	!AFT	James, Wilson	Artefact Scatter	2698
37-2-0695	LEF2;	AGD	56	296400	6416500	296505	6416689	Valid	663	AFT :-	!IA	James	Isolated Artefact	2698
37-2-0696	LEF3;	AGD	56	296400	6416400	296505	6416589	Valid	663	AFT :-	!IA	James	Isolated Artefact	2698
37-2-0697	LEF4;	AGD	56	296200	6416500	296305	6416689	Valid	663	AFT :-	!AFT	James	Artefact Scatter	2698
37-2-0698	LEG2;	AGD	56	297800	6416700	297905	6416889	Valid	0	AFT :-	!AFT	James	Artefact Scatter	2698
37-2-0699	LEG3;	AGD	56	297600	6416600	297705	6416789	Valid	0	AFT :-	!AFT	James	Artefact Scatter	2698
37-2-0700	LEH1;	AGD	56	298700	6416400	298805	6416589	Valid	670	AFT :-	!AFT	James	Artefact Scatter	2698
37-2-0701	LEH2;	AGD	56	298000	6416400	298105	6416589	Valid	0	AFT :-	!AFT	James	Artefact Scatter	
37-2-0702	LEH3;	AGD	56	298100	6416100	298205	6416289	Valid	0	AFT :-	!AFT	James	Artefact Scatter	
37-2-0703	LEI1;	AGD	56	299200	6416400	299305	6416589	Valid	670	AFT :-	!AFT	James	Artefact Scatter	
37-2-0704	LEI2;	AGD	56	299200	6416300	299305	6416489	Valid	670	AFT :-	!AFT	James	Artefact Scatter	
37-2-0705	LEI3;	AGD	56	299200	6416200	299305	6416389	Valid	670	AFT :-	!AFT	James	Artefact Scatter	
37-2-0706	LEI4 / Saddler's Pit 2;	AGD	56	299100	6416200	299205	6416389	Valid	670	AFT :-	!AFT	James, Wilson	Artefact Scatter	2698
37-2-0707	LEI5;	AGD	56	299700	6416400	299805	6416589	Valid	670	AFT :-	!AFT	James	Artefact Scatter	
37-2-0708	LEI6;	AGD	56	299700	6416100	299805	6416289	Valid	670	AFT :-	!AFT	James	Artefact Scatter	
37-2-0709	LFE1_(McDonalds Pit Dump Site 3);	AGD	56	295650	6415500	295755	6415689	Valid	663	AFT :-	!AFT	James, Wilson	Artefact Scatter	
37-2-0710	LFF1;	AGD	56	296200	6415600	296305	6415789	Valid	663	AFT :-	!AFT	James, Purcell	Artefact Scatter	101010
37-2-0711	LFF2;	AGD	56	296100	6415200	296205	6415389	Valid	663	AFT :-	!AFT	James	Artefact Scatter	
37-2-0712	LFG1;	AGD	56	297700	6415200	297805	6415389	Valid	0	AFT :-	!AFT	James	Artefact Scatter	
37-2-0713	LFG3;	AGD	56	297600	6415200	297705	6415389	Valid	0	AFT :-	!AFT	James	Artefact Scatter	
37-2-0714	LFG4;	AGD	56	297800	6415500	297905	6415689	Valid	670	AFT :-	!AFT	James	Artefact Scatter	
37-2-0715	LFG5;	AGD	56	297700	6415600	297805	6415789	Valid	670	AFT :-	!AFT	James	Artefact Scatter	

AHIMS Site #	AHIMS Site Name	Original Datum	Zone	AGD Easting	AGD Northing	MGA Easting	MGA Northing	Validity	AHIP Permit	Original Features	Review Feature Type	Original Recorder	AHIMS Site Types	AHIMS Reports #
37-2-0716	LFG6;	AGD	56	297500	6415300	297605	6415489	Valid	663	AFT :-	!AFT	James	Artefact Scatter	
37-2-0717	LFG7;	AGD	56	297800	6415700	297905	6415889	Valid	0	AFT :-	!AFT	James	Artefact Scatter	
37-2-0718	LFG8;	AGD	56	297300	6415400	297405	6415589	Valid	0	AFT :-	!AFT	James	Artefact Scatter	
37-2-0719	LFG9;	AGD	56	297800	6415000	297905	6415189	Valid	0	AFT :-	!AFT	James	Artefact Scatter	
37-2-0720	LFG10;	AGD	56	297700	6415000	297805	6415189	Valid	874	AFT :-	!AFT	James	Artefact Scatter	
37-2-0721	LFH2;	AGD	56	298300	6415200	298405	6415389	Valid	663	AFT :-	!AFT	James	Artefact Scatter	
37-2-0722	LF11;	AGD	56	299500	6415600	299605	6415789	Valid	0	AFT :-	!AFT	James	Artefact Scatter	4525
37-2-0723	LGG1;	AGD	56	297800	6414900	297905	6415089	Valid	874	AFT :-	!AFT	James	Artefact Scatter	
37-2-0724	LGG2;	AGD	56	297900	6414800	298005	6414989	Valid	874	AFT :-	!AFT	James	Artefact Scatter	
37-2-0725	LGG3;	AGD	56	297900	6414700	298005	6414889	Valid	874	AFT :-	!AFT	James	Artefact Scatter	
37-2-0726	LGG4;	AGD	56	297800	6414800	297905	6414989	Valid	874	AFT :-	!AFT	James	Artefact Scatter	
37-2-0727	LGH1;	AGD	56	298100	6414500	298205	6414689	Valid	874	AFT :-	!AFT	James	Artefact Scatter	
37-2-0728	LGH2;	AGD	56	298100	6414600	298205	6414789	Valid	874	AFT :-	!AFT	James	Artefact Scatter	
37-2-0729	LGH4;	AGD	56	298000	6414700	298105	6414889	Valid	874	AFT :-	!AFT	James	Artefact Scatter	
37-2-0730	LGH5;	AGD	56	298200	6414500	298305	6414689	Valid	874	AFT :-	!AFT	James	Artefact Scatter	
37-2-0731	LGH6;	AGD	56	298500	6414900	298605	6415089	Valid	874	AFT :-	!AFT	James	Artefact Scatter	
37-2-0732	LHH1;	AGD	56	298100	6413500	298205	6413689	Valid	0	AFT :-	!AFT	James	Artefact Scatter	101010
37-2-0733	LHH2;	AGD	56	298500	6413500	298605	6413689	Valid	0	AFT :-	!AFT	James	Artefact Scatter	101010
37-2-0734	LSC1;	AGD	56	298200	6415100	298305	6415289	Valid	874	TRE :-	ST	James	Scarred Tree	
37-2-0735	LSC2;	AGD	56	298300	6415100	298405	6415289	Valid	874	TRE :-	ST	James	Scarred Tree	
37-2-0736	LSC3;	AGD	56	298300	6414900	298405	6415089	Valid	874	TRE :-	ST	James	Scarred Tree	
37-2-0737	LSC4;	AGD	56	297100	6415300	297205	6415489	Valid	0	TRE :-	ST	James	Scarred Tree	
37-2-0748	BS 3 (Muswellbrook)	AGD	56	296950	6417150	297055	6417339	Valid	663	AFT :-	!AFT	Curran	Artefact Scatter	3008, 3126, 3398, 3991
37-2-0749	BS 4 (Muswellbrook)	AGD	56	296900	6417400	297005	6417589	Valid	663	AFT :-	!AFT	Curran	Artefact Scatter	3008, 3126, 3398, 3991
37-2-0750	HR1 (Jerrys Plains)	AGD	56	295810	6415400	295915	6415589	Valid	666	AFT :-	!IA	Curran	Isolated Artefact	3008, 3126, 3398, 3991
37-2-0751	HR2 (Jerrys Plains)	AGD	56	296650	6415300	296755	6415489	Valid	0	AFT :-	!AFT	Curran	Artefact Scatter	3008, 3126, 3398, 3991, 101010
37-2-0752	HR3 (Jerrys Plains)	AGD	56	297750	6415080	297855	6415269	Valid	0	AFT :-	!AFT	Curran	Artefact Scatter	3126, 3398, 3991
37-2-0753	HR4 (Jerrys Plains)	AGD	56	297910	6415150	298015	6415339	Valid	0	AFT :-	!IA	Curran	Isolated Artefact	3008, 3126, 3398, 3991
37-2-0754	HR5 (Jerrys Plains)	AGD	56	298100	6415100	298205	6415289	Valid	0	AFT :-	!IA	Curran	Isolated Artefact	3008, 3126, 3398, 3991
37-2-0755	HR6 (Jerrys Plains)	AGD	56	298400	6415060	298505	6415249	Valid	0	AFT :-	!AFT	Curran	Artefact Scatter	3008, 3126, 3398, 3991
37-2-0756	HR7 (Jerrys Plains)	AGD	56	299150	6414790	299255	6414979	Valid	0	AFT :-	!IA	Curran	Isolated Artefact	3008, 3126, 3398, 3991
37-2-0757	HR8 (Jerrys Plains)	AGD	56	299250	6414800	299355	6414989	Valid	0	AFT :-	!IA	Curran	Isolated Artefact	3008, 3126, 3398, 3991
37-2-0758	HR9 (Jerrys Plains)	AGD	56	299350	6414750	299455	6414939	Valid	0	AFT :-	!IA	Curran	Isolated Artefact	3008, 3126, 3398, 3991
37-2-0759	HR10 (Jerrys Plains)	AGD	56	299550	6414750	299655	6414939	Valid	666	AFT :-	!AFT	Curran	Artefact Scatter	3008, 3126, 3398, 3991, 101010
37-2-0760	HR11 (Jerrys Plains)	AGD	56	300310	6415300	300415	6415489	Valid	666	AFT :-	!AFT	Curran	Artefact Scatter	3008, 3126, 3398, 3991, 98357, 98373, 101010
37-2-0761	HR12 (Jerrys Plains)	AGD	56	300210	6415350	300315	6415539	Valid	666	AFT :-	!AFT	Curran	Artefact Scatter	3008, 3126, 3398, 3991, 98357, 98373
37-2-0762	HR13 (Jerrys Plains)	AGD	56	300150	6415450	300255	6415639	Valid	666	AFT :-	!AFT	Curran	Artefact Scatter	3008, 3126, 3398, 3991, 98357, 98373
37-2-0763	HR14 (Jerrys Plains)	AGD	56	300600	6416550	300705	6416739	Valid	0	AFT :-	!AFT	Curran	Artefact Scatter	3008, 3126, 3398, 3991, 98357, 98373
37-2-0764	HR15 (Jerrys Plains)	AGD	56	300610	6416950	300715	6417139	Valid	0	AFT :-	!AFT	Curran	Artefact Scatter	3008, 3126, 3398, 3991, 98357, 98373
37-2-0765	HR16 (Jerrys Plains)	AGD	56	300700	6417400	300805	6417589	Valid	0	AFT :-	!AFT	Curran	Artefact Scatter	3008, 3126, 3398, 3991, 98357, 98373
37-2-0766	HR17 (Jerrys Plains)	AGD	56	300550	6417800	300655	6417989	Valid	0	AFT :-	!IA	Curran	Isolated Artefact	3008, 3126, 3398, 3991, 98357, 98373
37-2-0767	ODA 1 (Muswellbrook)	AGD	56	296500	6416250	296605	6416439	Valid	662	AFT :-	!AFT	Curran	Artefact Scatter	3008, 3126, 3398, 3991
37-2-0768	ODA 3 (Jerrys Plains)	AGD	56	296900	6415800	297005	6415989	Valid	662	AFT :-	!AFT	Curran	Artefact Scatter	3008, 3126, 3398, 3991
37-2-0769	ODA 7 (Muswellbrook)	AGD	56	296200	6416150	296305	6416339	Valid	662	AFT :-	!AFT	Curran	Artefact Scatter	3008, 3126, 3398, 3991
37-2-0770	ODA 5/1 (Jerrys Plains)	AGD	56	297050	6415700	297155	6415889	Valid	0	AFT :-	!AFT	Curran	Artefact Scatter	3008, 3126, 3398, 3991
37-2-0771	ODA 5/2 (Jerrys Plains)	AGD	56	296900	6415850	297005	6416039	Valid	662	AFT :-	!IA	Curran	Isolated Artefact	3008, 3126, 3398, 3991
37-2-0772	BS 5 (Muswellbrook)	AGD	56	296500	6417000	296605	6417189	Valid	662	AFT :-	!AFT	Curran	Artefact Scatter	3126, 3991
37-2-0773	BS 6 (Muswellbrook)	AGD	56	296350	6416900	296455	6417089	Valid	662	AFT :-	!AFT	Curran	Artefact Scatter	3126, 3991

AHIMS Site #	AHIMS Site Name	Original Datum	Zone	AGD Easting	AGD Northing	MGA Easting	MGA Northing	Validity	AHIP Permit	Original Features	Review Feature Type	Original Recorder	AHIMS Site Types	AHIMS Reports #
37-2-0774	BS 7 (Muswellbrook)	AGD	56	296500	6417000	296605	6417189	Valid	662	AFT : -	!IA	Curran	Isolated Artefact	3126, 3991
37-2-0775	BS 8 (Muswellbrook)	AGD	56	296950	6417150	297055	6417339	Valid	662	AFT : -	!AFT	Curran	Artefact Scatter	3126, 3991
37-2-0776	BSP 5 (Muswellbrook)	AGD	56	297190	6416650	297295	6416839	Valid	662	AFT : -	!AFT	Curran	Artefact Scatter	3126, 3991
37-2-1425	McDonald's Pit 1;	AGD	56	295790	6416660	295895	6416849	Valid	0	AFT : -	!AFT	Wilson, Wilson	Artefact Scatter	2698
37-2-1426	McDonald's Pit 2;	AGD	56	296200	6414200	296305	6414389	Valid	0	AFT : -	!AFT	Purcell	Artefact Scatter	101010
37-2-1427	McDonald's Pit Dump Site 1;	AGD	56	295250	6415750	295355	6415939	Valid	0	AFT : -	!AFT	Wilson	Artefact Scatter	101010
37-2-1428	McDonald's Pit Dump Site 2;	AGD	56	295450	6416100	295555	6416289	Valid	0	AFT : -	!AFT	Wilson, Wilson	Artefact Scatter	
37-2-1430	McDonald's Pit Dump Site 4;	AGD	56	295700	6416100	295805	6416289	Valid	0	AFT : -	!AFT	Wilson, Wilson	Artefact Scatter	
37-2-1431	Saddler's Pit Scarred Tree;	AGD	56	298500	6416550	298605	6416739	Valid	0	TRE : -	ST	Wilson, Wilson	Scarred Tree	
37-2-1432	Saddler's Pit 1 (SP1);	AGD	56	298050	6416300	298155	6416489	Valid	0	AFT : -	!AFT	Wilson, Wilson	Artefact Scatter	
37-2-1433	Saddler's Pit East 1 (SP1E);	AGD	56	298130	6415630	298235	6415819	Valid	0	AFT : -	!AFT	Wilson, Wilson	Artefact Scatter	
37-2-1435	Saddler's Pit 3 (SP3);	AGD	56	298600	6416150	298705	6416339	Valid	0	AFT : -	!AFT	Wilson, Wilson	Artefact Scatter	
37-2-1436	Saddler's Pit 4 (SP4);	AGD	56	298250	6416000	298355	6416189	Valid	0	AFT : -	!AFT	Wilson, Wilson	Artefact Scatter	
37-2-1439	Mount Arthur Spur Site (MAS);	AGD	56	299800	6416500	299905	6416689	Valid	0	AFT : -	!AFT	Wilson, Wilson	Artefact Scatter	2698
37-2-1440	CPR 1;	AGD	56	295730	6418250	295835	6418439	Valid	0	AFT : -	!AFT	Wilson, Wilson	Artefact Scatter	
37-2-1443	BS 1;	AGD	56	296150	6416900	296255	6417089	Valid	662	AFT : -	!IA	Curran	Isolated Artefact	
37-2-1444	Edderton Rd 2;	AGD	56	294300	6419550	294405	6419739	Valid	0	AFT : -	!AFT	University of New England	Artefact Scatter	101010
37-2-1445	Quarry Creek Scarred Tree;	AGD	56	296500	6417550	296605	6417739	Valid	0	TRE : -	ST	Pursche	Scarred Tree	
37-2-1446	Quarry Creek Scarred Tree 2;	AGD	56	296750	6417300	296855	6417489	Valid	0	TRE : -	ST	Pursche	Scarred Tree	
37-2-1546	CC4	AGD	56	295200	6422900	295305	6423089	Valid	1384	AFT : -	!AFT	Unknown Author	Artefact Scatter	
37-2-1547	CC5	AGD	56	296600	6421000	296705	6421189	Valid	0	AFT : -	!AFT	Unknown Author	Artefact Scatter	
37-2-1548	CC6	AGD	56	297200	6420300	297305	6420489	Valid	0	AFT : -	!AFT	Unknown Author	Artefact Scatter	
37-2-1549	CC2	AGD	56	295000	6422000	295105	6422189	Valid	1384	AFT : -	!AFT	Unknown Author	Artefact Scatter	
37-2-1550	CC7	AGD	56	296600	6419900	296705	6420089	Valid	0	AFT : -	!AFT	Unknown Author	Artefact Scatter	
37-2-1551	CC8	AGD	56	297000	6419500	297105	6419689	Valid	0	AFT : -	!AFT	Unknown Author	Artefact Scatter	
37-2-1552	CC9	AGD	56	297400	6419200	297505	6419389	Valid	0	AFT : -	!AFT	Unknown Author	Artefact Scatter	
37-2-1553	CC10	AGD	56	297300	6419000	297405	6419189	Valid	0	AFT : -	!AFT	Unknown Author	Artefact Scatter	
37-2-1554	CC11	AGD	56	297300	6418700	297405	6418889	Valid	0	AFT : -	!AFT	Unknown Author	Artefact Scatter	
37-2-1555	CC12	AGD	56	297700	6418500	297805	6418689	Valid	0	AFT : -	!AFT	Unknown Author	Artefact Scatter	
37-2-1556	CC15	AGD	56	297400	6419300	297505	6419489	Valid	0	AFT : -	!AFT	Unknown Author	Artefact Scatter	
37-2-1557	CC16	AGD	56	297300	6419600	297405	6419789	Valid	1384	AFT : -	!AFT	Unknown Author	Artefact Scatter	
37-2-1558	CC18	AGD	56	297300	6419800	297405	6419989	Valid	1384	AFT : -	!AFT	Unknown Author	Artefact Scatter	
37-2-1559	CC19	AGD	56	298600	6418700	298705	6418889	Valid	1384	AFT : -	!AFT	Unknown Author	Artefact Scatter	
37-2-1560	CC21	AGD	56	298600	6419100	298705	6419289	Valid	0	AFT : -	!AFT	Unknown Author	Artefact Scatter	
37-2-1561	CC22	AGD	56	298500	6418900	298605	6419089	Valid	0	AFT : -	!AFT	Unknown Author	Artefact Scatter	
37-2-1562	CC23	AGD	56	298500	6418700	298605	6418889	Valid	0	AFT : -	!AFT	Unknown Author	Artefact Scatter	
37-2-1563	CC24	AGD	56	298400	6418600	298505	6418789	Valid	0	AFT : -	!AFT	Unknown Author	Artefact Scatter	
37-2-1564	CC27	AGD	56	298300	6418600	298405	6418789	Valid	1384	AFT : -	!AFT	Unknown Author	Artefact Scatter	
37-2-1565	CC29	AGD	56	298200	6418800	298305	6418989	Valid	0	AFT : -	!AFT	Unknown Author	Artefact Scatter	
37-2-1566	CC125	AGD	56	296700	6423800	296805	6423989	Valid	2275	AFT : -	!AFT	Unknown Author	Artefact Scatter	
37-2-1567	CC30	AGD	56	298300	6419300	298405	6419489	Valid	0	AFT : -	!AFT	Unknown Author	Artefact Scatter	
37-2-1568	CC33	AGD	56	298100	6418800	298205	6418989	Valid	0	AFT : -	!AFT	Unknown Author	Artefact Scatter	
37-2-1569	CC36	AGD	56	298000	6418900	298105	6419089	Valid	0	AFT : -	!AFT	Unknown Author	Artefact Scatter	
37-2-1570	CC38	AGD	56	298000	6419400	298105	6419589	Valid	0	AFT : -	!AFT	Unknown Author	Artefact Scatter	
37-2-1571	CC39	AGD	56	297800	6419300	297905	6419489	Valid	0	AFT : -	!AFT	Unknown Author	Artefact Scatter	
37-2-1572	CC40	AGD	56	297900	6419400	298005	6419589	Valid	0	AFT : -	!AFT	Unknown Author	Artefact Scatter	
37-2-1573	CC41	AGD	56	297800	6419400	297905	6419589	Valid	0	AFT : -	!AFT	Unknown Author	Artefact Scatter	
37-2-1574	CC42	AGD	56	298400	6419100	298505	6419289	Valid	0	AFT : -	!AFT	Unknown Author	Artefact Scatter	
37-2-1575	CC43	AGD	56	299300	6417700	299405	6417889	Valid	1384	AFT : -	!AFT	Unknown Author	Artefact Scatter	
37-2-1576	CC44	AGD	56	299900	6417700	300005	6417889	Valid	1384	AFT : -	!AFT	Unknown Author	Artefact Scatter	
37-2-1577	CC45	AGD	56	300500	6417500	300605	6417689	Valid	1384	AFT : -	!AFT	Unknown Author	Artefact Scatter	98357, 98373

AHIMS Site #	AHIMS Site Name	Original Datum	Zone	AGD Easting	AGD Northing	MGA Easting	MGA Northing	Validity	AHIP Permit	Original Features	Review Feature Type	Original Recorder	AHIMS Site Types	AHIMS Reports #
37-2-1578	82CC46	AGD	56	299600	6417800	299705	6417989	Valid	1384	AFT :-	!AFT	Unknown Author	Artefact Scatter	
37-2-1579	CC47	AGD	56	299700	6417830	299805	6418019	Valid	1384	AFT :-	!AFT	Unknown Author	Artefact Scatter	
37-2-1580	CC48	AGD	56	299400	6417900	299505	6418089	Valid	1384	AFT :-	!AFT	Unknown Author	Artefact Scatter	
37-2-1581	CC50	AGD	56	300600	6417500	300705	6417689	Valid	1384	AFT :-	!AFT	Unknown Author	Artefact Scatter	98357, 98373
37-2-1582	CC59	AGD	56	300600	6418600	300705	6418789	Valid	1384	AFT :-	!AFT	Unknown Author	Artefact Scatter	98357, 98373
37-2-1583	CC60	AGD	56	300600	6419000	300705	6419189	Valid	0	AFT :-	!AFT	Unknown Author	Artefact Scatter	98357, 98373
37-2-1584	CC61	AGD	56	300500	6419000	300605	6419189	Valid	0	AFT :-	!AFT	Unknown Author	Artefact Scatter	98357, 98373
37-2-1585	CC62	AGD	56	300200	6419500	300305	6419689	Valid	0	AFT :-	!AFT	Unknown Author	Artefact Scatter	98357, 98373
37-2-1586	CC63	AGD	56	300400	6419500	300505	6419689	Valid	0	AFT :-	!AFT	Unknown Author	Artefact Scatter	98357, 98373
37-2-1587	CC65	AGD	56	299700	6417400	299805	6417589	Valid	1384	AFT :-	!AFT	Unknown Author	Artefact Scatter	
37-2-1588	CC75	AGD	56	300000	6417300	300105	6417489	Valid	1384	AFT :-	!AFT	Unknown Author	Artefact Scatter	98357, 98373
37-2-1589	CC76	AGD	56	300800	6417300	300905	6417489	Valid	0	AFT :-	!AFT	Unknown Author	Artefact Scatter	98357, 98373
37-2-1590	CC81	AGD	56	299100	6417200	299205	6417389	Valid	0	AFT :-	!AFT	Unknown Author	Artefact Scatter	
37-2-1591	CC84	AGD	56	299800	6417100	299905	6417289	Valid	1384	AFT :-	!AFT	Unknown Author	Artefact Scatter	
37-2-1592	CC91	AGD	56	300500	6416950	300605	6417139	Valid	1384	AFT :-	!AFT	Unknown Author	Artefact Scatter	98357, 98373
37-2-1593	CC92	AGD	56	300300	6416800	300405	6416989	Valid	1384	AFT :-	!AFT	Unknown Author	Artefact Scatter	98357, 98373
37-2-1594	CC93	AGD	56	300400	6416900	300505	6417089	Valid	1384	AFT :-	!AFT	Unknown Author	Artefact Scatter	98357, 98373
37-2-1595	CC97	AGD	56	300000	6422300	300105	6422489	Valid	0	AFT :-	!AFT	Unknown Author	Artefact Scatter	
37-2-1596	CC98	AGD	56	299500	6422800	299605	6422989	Valid	0	AFT :-	!AFT	Unknown Author	Artefact Scatter	
37-2-1597	CC99	AGD	56	300000	6422100	300105	6422289	Valid	0	AFT :-	!AFT	Unknown Author	Artefact Scatter	
37-2-1599	CC102	AGD	56	300300	6419800	300405	6419989	Valid	0	AFT :-	!AFT	Unknown Author	Artefact Scatter	98357, 98373
37-2-1600	CC107	AGD	56	299200	6423900	299305	6424089	Valid	0	AFT :-	!AFT	Unknown Author	Artefact Scatter	
37-2-1601	CC112	AGD	56	297700	6424000	297805	6424189	Valid	0	AFT :-	!AFT	Unknown Author	Artefact Scatter	
37-2-1602	CC113	AGD	56	298000	6423700	298105	6423889	Valid	0	AFT :-	!AFT	Unknown Author	Artefact Scatter	
37-2-1603	CC114	AGD	56	297300	6423700	297405	6423889	Valid	2275	AFT :-	!AFT	Unknown Author	Artefact Scatter	101050
37-2-1604	CC115	AGD	56	297300	6422000	297405	6422189	Valid	0	AFT :-	!AFT	Unknown Author	Artefact Scatter	
37-2-1605	CC116	AGD	56	297380	6423800	297485	6423989	Valid	0	AFT :-	!AFT	Unknown Author	Artefact Scatter	
37-2-1606	CC117	AGD	56	297500	6423300	297605	6423489	Valid	0	AFT :-	!AFT	Unknown Author	Artefact Scatter	101050
37-2-1607	CC118	AGD	56	297400	6423200	297505	6423389	Valid	2275	AFT :-	!AFT	Unknown Author	Artefact Scatter	101050
37-2-1608	CC119	AGD	56	297360	6423200	297465	6423389	Valid	2275	AFT :-	!AFT	Unknown Author	Artefact Scatter	101050
37-2-1609	CC120	AGD	56	297000	6423600	297105	6423789	Valid	0	AFT :-	!AFT	Unknown Author	Artefact Scatter	101050
37-2-1610	CC121	AGD	56	296800	6423500	296905	6423689	Valid	2275	AFT :-	!AFT	Unknown Author	Artefact Scatter	101050
37-2-1611	CC122	AGD	56	297000	6422900	297105	6423089	Valid	0	AFT :-	!AFT	Unknown Author	Artefact Scatter	
37-2-1612	CC124	AGD	56	297000	6423200	297105	6423389	Valid	0	AFT :-	!AFT	Unknown Author	Artefact Scatter	
37-2-1613	CC127	AGD	56	296500	6422200	296605	6422389	Valid	1384	AFT :-	!AFT	Unknown Author	Artefact Scatter	
37-2-1614	CC128	AGD	56	297000	6422200	297105	6422389	Valid	0	AFT :-	!AFT	Unknown Author	Artefact Scatter	
37-2-1615	CC129	AGD	56	297150	6422300	297255	6422489	Valid	0	AFT :-	!AFT	Unknown Author	Artefact Scatter	
37-2-1616	CC130	AGD	56	298200	6421900	298305	6422089	Valid	0	AFT :-	!AFT	Unknown Author	Artefact Scatter	
37-2-1617	CC131	AGD	56	297800	6421100	297905	6421289	Valid	0	AFT :-	!AFT	Unknown Author	Artefact Scatter	
37-2-1618	CC132	AGD	56	300500	6419500	300605	6419689	Valid	0	AFT :-	!AFT	Unknown Author	Artefact Scatter	98357, 98373
37-2-1619	CC133	AGD	56	300400	6419800	300505	6419989	Valid	0	AFT :-	!AFT	Unknown Author	Artefact Scatter	98357, 98373
37-2-1620	CC134	AGD	56	300100	6420500	300205	6420689	Valid	0	AFT :-	!AFT	Unknown Author	Artefact Scatter	98357, 98373
37-2-1621	CC135	AGD	56	298500	6421500	298605	6421689	Valid	0	AFT :-	!AFT	Unknown Author	Artefact Scatter	
37-2-1622	LS1	AGD	56	294700	6421300	294805	6421489	Valid	0	AFT :-	!AFT	Unknown Author	Artefact Scatter	
37-2-1623	LS5	AGD	56	294850	6420500	294955	6420689	Valid	0	AFT :-	!AFT	Unknown Author	Artefact Scatter	
37-2-1624	LS7	AGD	56	295200	6419700	295305	6419889	Valid	0	AFT :-	!AFT	Unknown Author	Artefact Scatter	
37-2-1625	LS9	AGD	56	297000	6421500	297105	6421689	Valid	0	AFT :-	!AFT	Unknown Author	Artefact Scatter	
37-2-1626	LS14	AGD	56	297200	6421300	297305	6421489	Valid	0	AFT :-	!AFT	Unknown Author	Artefact Scatter	
37-2-1627	LS17	AGD	56	297400	6421300	297505	6421489	Valid	0	AFT :-	!AFT	Unknown Author	Artefact Scatter	
37-2-1628	LS19	AGD	56	297600	6421650	297705	6421839	Valid	0	AFT :-	!AFT	Unknown Author	Artefact Scatter	
37-2-1629	MB1	AGD	56	294200	6422100	294305	6422289	Valid	0	AFT :-	!AFT	Unknown Author	Artefact Scatter	
37-2-1630	MB2	AGD	56	294300	6421500	294405	6421689	Valid	0	AFT :-	!AFT	Unknown Author	Artefact Scatter	

AHIMS Site #	AHIMS Site Name	Original Datum	Zone	AGD Easting	AGD Northing	MGA Easting	MGA Northing	Validity	AHIP Permit	Original Features	Review Feature Type	Original Recorder	AHIMS Site Types	AHIMS Reports #
37-2-1631	MB5	AGD	56	295300	6423000	295405	6423189	Valid	0	AFT :-	!AFT	Unknown Author	Artefact Scatter	
37-2-1632	MB7	AGD	56	296500	6420500	296605	6420689	Valid	1384	AFT :-	!AFT	Unknown Author	Artefact Scatter	
37-2-1633	MB8	AGD	56	298000	6421500	298105	6421689	Valid	0	AFT :-	!AFT	ASRSYS	Artefact Scatter	
37-2-1634	MB8	AGD	56	298000	6421500	298105	6421689	Valid	0	AFT :-	!AFT	Unknown Author	Artefact Scatter	
37-2-1635	MB9	AGD	56	298000	6421360	298105	6421549	Valid	0	AFT :-	!AFT	Unknown Author	Artefact Scatter	
37-2-1636	MB11	AGD	56	298700	6420200	298805	6420389	Valid	0	AFT :-	!AFT	Unknown Author	Artefact Scatter	
37-2-1637	MB13	AGD	56	298600	6420700	298705	6420889	Valid	0	AFT :-	!AFT	Unknown Author	Artefact Scatter	
37-2-1638	MB14	AGD	56	298500	6419600	298605	6419789	Valid	0	AFT :-	!AFT	Unknown Author	Artefact Scatter	
37-2-1639	MB17	AGD	56	298800	6419700	298905	6419889	Valid	0	AFT :-	!AFT	Unknown Author	Artefact Scatter	
37-2-1640	MB18	AGD	56	298700	6419700	298805	6419889	Valid	0	AFT :-	!AFT	Unknown Author	Artefact Scatter	
37-2-1641	MB19	AGD	56	298800	6420000	298905	6420189	Valid	0	AFT :-	!AFT	Unknown Author	Artefact Scatter	
37-2-1642	MB20	AGD	56	299000	6420800	299105	6420989	Valid	0	AFT :-	!AFT	Unknown Author	Artefact Scatter	
37-2-1643	MB21	AGD	56	299000	6421300	299105	6421489	Valid	0	AFT :-	!AFT	Unknown Author	Artefact Scatter	
37-2-1644	MB22	AGD	56	299700	6418500	299805	6418689	Valid	0	AFT :-	!AFT	Unknown Author	Artefact Scatter	
37-2-1645	MB23	AGD	56	299750	6418400	299855	6418589	Valid	1384	AFT :-	!AFT	Unknown Author	Artefact Scatter	
37-2-1646	MB24	AGD	56	299800	6418400	299905	6418589	Valid	1384	AFT :-	!AFT	Unknown Author	Artefact Scatter	
37-2-1647	MB27	AGD	56	299800	6418500	299905	6418689	Valid	1384	AFT :-	!AFT	Unknown Author	Artefact Scatter	
37-2-1648	MB28	AGD	56	299900	6418500	300005	6418689	Valid	1384	AFT :-	!AFT	Unknown Author	Artefact Scatter	
37-2-1649	MB29	AGD	56	299800	6418700	299905	6418889	Valid	0	AFT :-	!AFT	Unknown Author	Artefact Scatter	
37-2-1650	MB30	AGD	56	299900	6418600	300005	6418789	Valid	0	AFT :-	!AFT	Unknown Author	Artefact Scatter	
37-2-1651	MB32	AGD	56	299950	6418600	300055	6418789	Valid	0	AFT :-	!AFT	Unknown Author	Artefact Scatter	
37-2-1652	MB33	AGD	56	299900	6418700	300005	6418889	Valid	0	AFT :-	!AFT	Unknown Author	Artefact Scatter	
37-2-1653	MB34	AGD	56	299900	6419500	300005	6419689	Valid	0	AFT :-	!AFT	Unknown Author	Artefact Scatter	
37-2-1654	MB38	AGD	56	299600	6419000	299705	6419189	Valid	0	AFT :-	!AFT	Unknown Author	Artefact Scatter	
37-2-1655	MB39	AGD	56	299000	6420000	299105	6420189	Valid	0	AFT :-	!AFT	Unknown Author	Artefact Scatter	
37-2-1656	MB41	AGD	56	298200	6423000	298305	6423189	Valid	2275	AFT :-	!AFT	Unknown Author	Artefact Scatter	
37-2-1657	MB43	AGD	56	298300	6423300	298405	6423489	Valid	0	AFT :-	!AFT	Unknown Author	Artefact Scatter	
37-2-1658	MB45	AGD	56	297800	6422800	297905	6422989	Valid	0	AFT :-	!AFT	Unknown Author	Artefact Scatter	
37-2-1659	MB46	AGD	56	297000	6422500	297105	6422689	Valid	0	AFT :-	!AFT	Unknown Author	Artefact Scatter	
37-2-1660	MB49	AGD	56	298500	6422500	298605	6422689	Valid	1384	AFT :-	!AFT	Unknown Author	Artefact Scatter	
37-2-1661	MB50	AGD	56	296100	6422900	296205	6423089	Valid	0	AFT :-	!AFT	Unknown Author	Artefact Scatter	
37-2-1662	MB51	AGD	56	296600	6422500	296705	6422689	Valid	0	AFT :-	!AFT	Unknown Author	Artefact Scatter	
37-2-1663	MB53	AGD	56	297500	6418300	297605	6418489	Valid	0	AFT :-	!AFT	Unknown Author	Artefact Scatter	
37-2-1664	MB56	AGD	56	297300	6418600	297405	6418789	Valid	0	AFT :-	!AFT	Unknown Author	Artefact Scatter	
37-2-1665	MB57	AGD	56	297000	6419200	297105	6419389	Valid	0	AFT :-	!AFT	Unknown Author	Artefact Scatter	
37-2-1666	MB58	AGD	56	297000	6418800	297105	6418989	Valid	0	AFT :-	!AFT	Unknown Author	Artefact Scatter	
37-2-1667	MB59	AGD	56	296900	6419100	297005	6419289	Valid	0	AFT :-	!AFT	Unknown Author	Artefact Scatter	
37-2-1668	MB62	AGD	56	296000	6420500	296105	6420689	Valid	1384	AFT :-	!AFT	Unknown Author	Artefact Scatter	
37-2-1669	MB63	AGD	56	299800	6421200	299905	6421389	Valid	0	AFT :-	!AFT	Unknown Author	Artefact Scatter	
37-2-1670	MB65	AGD	56	299500	6421150	299605	6421339	Valid	0	AFT :-	!AFT	Unknown Author	Artefact Scatter	
37-2-1671	MB66	AGD	56	296100	6420500	296205	6420689	Valid	1384	AFT :-	!AFT	Unknown Author	Artefact Scatter	
37-2-1672	PK1	AGD	56	294500	6422200	294605	6422389	Valid	0	AFT :-	!AFT	Kuskie	Artefact Scatter	
37-2-1673	PK2	AGD	56	294650	6421700	294755	6421889	Valid	0	AFT :-	!AFT	Kuskie	Artefact Scatter	
37-2-1674	PK3	AGD	56	294710	6421500	294815	6421689	Valid	0	AFT :-	!AFT	Kuskie	Artefact Scatter	
37-2-1675	PK4	AGD	56	294750	6421200	294855	6421389	Valid	0	AFT :-	!AFT	Kuskie	Artefact Scatter	
37-2-1676	PK6	AGD	56	294800	6420950	294905	6421139	Valid	0	AFT :-	!AFT	Kuskie	Artefact Scatter	
37-2-1677	PK7	AGD	56	294800	6420600	294905	6420789	Valid	0	AFT :-	!AFT	Kuskie	Artefact Scatter	
37-2-1678	PK8	AGD	56	295500	6420500	295605	6420689	Valid	1384	AFT :-	!AFT	Kuskie	Artefact Scatter	
37-2-1679	PK10	AGD	56	295450	6420750	295555	6420939	Valid	1384	AFT :-	!AFT	Kuskie	Artefact Scatter	
37-2-1680	PK12	AGD	56	296200	6421700	296305	6421889	Valid	0	AFT :-	!AFT	Kuskie	Artefact Scatter	
37-2-1681	PK15	AGD	56	296300	6421600	296405	6421789	Valid	0	AFT :-	!AFT	Kuskie	Artefact Scatter	
37-2-1682	PK16	AGD	56	296350	6421500	296455	6421689	Valid	0	AFT :-	!AFT	Kuskie	Artefact Scatter	

AHIMS Site #	AHIMS Site Name	Original Datum	Zone	AGD Easting	AGD Northing	MGA Easting	MGA Northing	Validity	AHIP Permit	Original Features	Review Feature Type	Original Recorder	AHIMS Site Types	AHIMS Reports #
37-2-1683	PK17	AGD	56	296600	6421300	296705	6421489	Valid	0	AFT :-	!AFT	Kuskie	Artefact Scatter	
37-2-1684	PK19	AGD	56	296850	6421000	296955	6421189	Valid	0	AFT :-	!AFT	Kuskie	Artefact Scatter	
37-2-1685	PK20	AGD	56	297000	6420850	297105	6421039	Valid	0	AFT :-	!AFT	Kuskie	Artefact Scatter	
37-2-1686	PK21	AGD	56	297100	6420800	297205	6420989	Valid	0	AFT :-	!AFT	Kuskie	Artefact Scatter	
37-2-1687	PK24	AGD	56	297400	6420500	297505	6420689	Valid	0	AFT :-	!AFT	Kuskie	Artefact Scatter	
37-2-1688	PK27	AGD	56	297100	6420100	297205	6420289	Valid	0	AFT :-	!AFT	Kuskie	Artefact Scatter	
37-2-1689	PK28	AGD	56	297000	6420000	297105	6420189	Valid	0	AFT :-	!AFT	Kuskie	Artefact Scatter	
37-2-1690	PK29	AGD	56	296700	6420300	296805	6420489	Valid	0	AFT :-	!AFT	Kuskie	Artefact Scatter	
37-2-1691	PK31	AGD	56	297500	6419600	297605	6419789	Valid	0	AFT :-	!AFT	Kuskie	Artefact Scatter	
37-2-1692	PK32	AGD	56	297650	6419450	297755	6419639	Valid	0	AFT :-	!AFT	Kuskie	Artefact Scatter	
37-2-1693	PK33	AGD	56	297650	6419400	297755	6419589	Valid	0	AFT :-	!AFT	Kuskie	Artefact Scatter	
37-2-1694	PK34	AGD	56	297650	6419300	297755	6419489	Valid	0	AFT :-	!AFT	Kuskie	Artefact Scatter	
37-2-1695	PK35	AGD	56	297750	6418900	297855	6419089	Valid	0	AFT :-	!AFT	Kuskie	Artefact Scatter	
37-2-1696	PK36	AGD	56	297500	6419000	297605	6419189	Valid	0	AFT :-	!AFT	Kuskie	Artefact Scatter	
37-2-1697	PK40	AGD	56	296900	6418700	297005	6418889	Valid	0	AFT :-	!AFT	Kuskie	Artefact Scatter	
37-2-1698	PK42	AGD	56	296300	6419800	296405	6419989	Valid	0	AFT :-	!AFT	Kuskie	Artefact Scatter	
37-2-1699	PK43	AGD	56	296900	6418900	297005	6419089	Valid	0	AFT :-	!AFT	Kuskie	Artefact Scatter	
37-2-1700	PK44	AGD	56	296600	6419150	296705	6419339	Valid	0	AFT :-	!AFT	Kuskie	Artefact Scatter	
37-2-1701	PK45	AGD	56	297600	6419800	297705	6419989	Valid	0	AFT :-	!AFT	Kuskie	Artefact Scatter	
37-2-1702	PK47	AGD	56	297650	6419750	297755	6419939	Valid	0	AFT :-	!AFT	Kuskie	Artefact Scatter	
37-2-1703	PK48	AGD	56	298000	6420300	298105	6420489	Valid	0	AFT :-	!AFT	Kuskie	Artefact Scatter	
37-2-1704	PK50	AGD	56	298100	6420350	298205	6420539	Valid	0	AFT :-	!AFT	Kuskie	Artefact Scatter	
37-2-1705	PK52	AGD	56	298300	6420100	298405	6420289	Valid	0	AFT :-	!AFT	Kuskie	Artefact Scatter	
37-2-1706	PK53	AGD	56	298500	6420100	298605	6420289	Valid	0	AFT :-	!AFT	Kuskie	Artefact Scatter	
37-2-1707	PK54	AGD	56	298450	6420000	298555	6420189	Valid	0	AFT :-	!AFT	Kuskie	Artefact Scatter	
37-2-1708	PK56	AGD	56	298000	6419700	298105	6419889	Valid	0	AFT :-	!AFT	Kuskie	Artefact Scatter	
37-2-1709	PK57	AGD	56	297950	6419950	298055	6420139	Valid	0	AFT :-	!AFT	Kuskie	Artefact Scatter	
37-2-1710	PK58	AGD	56	297750	6419600	297855	6419789	Valid	0	AFT :-	!AFT	Kuskie	Artefact Scatter	
37-2-1711	PK62	AGD	56	298900	6418000	299005	6418189	Valid	1384	AFT :-	!IA	Kuskie	Isolated Artefact	
37-2-1712	PK65	AGD	56	298850	6417950	298955	6418139	Valid	1384	AFT :-	!IA	Kuskie	Isolated Artefact	
37-2-1713	PK69	AGD	56	299500	6418100	299605	6418289	Valid	1384	AFT :-	!AFT	Kuskie	Artefact Scatter	
37-2-1714	PK70	AGD	56	299750	6418200	299855	6418389	Valid	1384	AFT :-	!IA	Kuskie	Isolated Artefact	
37-2-1715	PK71	AGD	56	299800	6418200	299905	6418389	Valid	1384	AFT :-	!IA	Kuskie	Isolated Artefact	
37-2-1716	PK77	AGD	56	300500	6417800	300605	6417989	Valid	1384	AFT :-	!AFT	Kuskie	Artefact Scatter	98357, 98373
37-2-1717	PK78	AGD	56	300600	6418000	300705	6418189	Valid	1384	AFT :-	!IA	Kuskie	Isolated Artefact	98357, 98373
37-2-1718	PK79	AGD	56	300550	6418200	300655	6418389	Valid	1384	AFT :-	!AFT	Kuskie	Artefact Scatter	98357, 98373
37-2-1719	PK67	AGD	56	299200	6417800	299305	6417989	Valid	1384	AFT :-	!IA	Kuskie	Isolated Artefact	
37-2-1720	PK82	AGD	56	300250	6418450	300355	6418639	Valid	1384	AFT :-	!IA	Kuskie	Isolated Artefact	98357, 98373
37-2-1721	PK83	AGD	56	300500	6418600	300605	6418789	Valid	1384	AFT :-	!AFT	Kuskie	Artefact Scatter	98357, 98373
37-2-1722	PK85	AGD	56	300250	6418350	300355	6418539	Valid	0	AFT :-	!AFT	Kuskie	Artefact Scatter	98357, 98373
37-2-1723	PK87	AGD	56	300300	6419000	300405	6419189	Valid	0	AFT :-	!AFT	Kuskie	Artefact Scatter	98357, 98373
37-2-1724	PK88	AGD	56	300300	6419300	300405	6419489	Valid	0	AFT :-	!AFT	Kuskie	Artefact Scatter	98357, 98373
37-2-1725	PK91	AGD	56	299900	6418500	300005	6418689	Valid	1384	AFT :-	!AFT	Kuskie	Artefact Scatter	
37-2-1726	PK92	AGD	56	300500	6417460	300605	6417649	Valid	1384	AFT :-	!AFT	Kuskie	Artefact Scatter	98357, 98373
37-2-1727	PK93	AGD	56	299500	6417650	299605	6417839	Valid	1384	AFT :-	!IA	Kuskie	Isolated Artefact	
37-2-1728	PK96	AGD	56	300500	6417200	300605	6417389	Valid	1384	AFT :-	!AFT	Kuskie	Artefact Scatter	98357, 98373
37-2-1729	PK97	AGD	56	300350	6417300	300455	6417489	Valid	1384	AFT :-	!AFT	Kuskie	Artefact Scatter	98357, 98373
37-2-1730	PK100	AGD	56	299350	6417200	299455	6417389	Valid	1384	AFT :-	!AFT	Kuskie	Artefact Scatter	
37-2-1731	PK101	AGD	56	299600	6417150	299705	6417339	Valid	0	AFT :-	!AFT	Kuskie	Artefact Scatter	
37-2-1732	PK102	AGD	56	299800	6417350	299905	6417539	Valid	1384	AFT :-	!AFT	Kuskie	Artefact Scatter	
37-2-1733	PK107	AGD	56	300000	6416900	300105	6417089	Valid	1384	AFT :-	!AFT	Kuskie	Artefact Scatter	98357, 98373
37-2-1734	PK108	AGD	56	299550	6416800	299655	6416989	Valid	0	AFT :-	!AFT	Kuskie	Artefact Scatter	

AHIMS Site #	AHIMS Site Name	Original Datum	Zone	AGD Easting	AGD Northing	MGA Easting	MGA Northing	Validity	AHIP Permit	Original Features	Review Feature Type	Original Recorder	AHIMS Site Types	AHIMS Reports #
37-2-1735	PK109	AGD	56	299450	6416800	299555	6416989	Valid	0	AFT :-	!IA	Kuskie	Isolated Artefact	
37-2-1736	PK110	AGD	56	299300	6416850	299405	6417039	Valid	0	AFT :-	!AFT	Kuskie	Artefact Scatter	
37-2-1737	PK116	AGD	56	299000	6422700	299105	6422889	Valid	0	AFT :-	!AFT	Kuskie	Artefact Scatter	
37-2-1738	PK117	AGD	56	298500	6424000	298605	6424189	Valid	2275	AFT :-	!AFT	Kuskie	Artefact Scatter	
37-2-1739	PK118	AGD	56	298700	6423350	298805	6423539	Valid	0	AFT :-	!AFT	Kuskie	Artefact Scatter	
37-2-1740	PK119	AGD	56	298400	6423900	298505	6424089	Valid	0	AFT :-	!AFT	Kuskie	Artefact Scatter	
37-2-1742	PK121	AGD	56	298000	6424000	298105	6424189	Valid	0	AFT :-	!AFT	Kuskie	Artefact Scatter	
37-2-1743	PK122	AGD	56	298150	6423500	298255	6423689	Valid	2275	AFT :-	!AFT	Kuskie	Artefact Scatter	
37-2-1744	PK125	AGD	56	297500	6423650	297605	6423839	Valid	0	AFT :-	!AFT	Kuskie	Artefact Scatter	
37-2-1745	PK126	AGD	56	297500	6422850	297605	6423039	Valid	0	AFT :-	!AFT	Kuskie	Artefact Scatter	
37-2-1746	PK127	AGD	56	298100	6423000	298205	6423189	Valid	0	AFT :-	!AFT	Kuskie	Artefact Scatter	
37-2-1747	PK128	AGD	56	297300	6423000	297405	6423189	Valid	0	AFT :-	!AFT	Kuskie	Artefact Scatter	
37-2-1748	PK129	AGD	56	297250	6423150	297355	6423339	Valid	2275	AFT :-	!AFT	Kuskie	Artefact Scatter	
37-2-1749	PK130	AGD	56	296700	6422900	296805	6423089	Valid	0	AFT :-	!IA	Kuskie	Isolated Artefact	
37-2-1750	PK132	AGD	56	296400	6423150	296505	6423339	Valid	1384	AFT :-	!AFT	Kuskie	Artefact Scatter	
37-2-1751	PK136	AGD	56	301000	6421500	301105	6421689	Valid	0	AFT :-	!AFT	Kuskie	Artefact Scatter	
37-2-1752	PK139	AGD	56	301100	6421000	301205	6421189	Valid	0	AFT :-	!IA	Kuskie	Isolated Artefact	98357, 98373
37-2-1753	PK141	AGD	56	300900	6421550	301005	6421739	Valid	0	AFT :-	!IA	Kuskie	Isolated Artefact	
37-2-1754	PK143	AGD	56	295400	6422000	295505	6422189	Valid	1384	AFT :-	!AFT	Kuskie	Artefact Scatter	
37-2-1755	PK144	AGD	56	295200	6422100	295305	6422289	Valid	1384	AFT :-	!AFT	Kuskie	Artefact Scatter	
37-2-1756	PK145	AGD	56	296000	6421350	296105	6421539	Valid	0	AFT :-	!AFT	Kuskie	Artefact Scatter	
37-2-1757	PK146	AGD	56	296500	6420900	296605	6421089	Valid	0	AFT :-	!AFT	Kuskie	Artefact Scatter	
37-2-1758	PK147	AGD	56	296500	6421000	296605	6421189	Valid	0	AFT :-	!IA	Kuskie	Isolated Artefact	
37-2-1759	PK148	AGD	56	297300	6420400	297405	6420589	Valid	0	AFT :-	!IA	Kuskie	Isolated Artefact	
37-2-1760	PK150	AGD	56	296850	6420400	296955	6420589	Valid	0	AFT :-	!AFT	Kuskie	Artefact Scatter	
37-2-1761	PK151	AGD	56	295750	6420800	295855	6420989	Valid	1384	AFT :-	!AFT	Kuskie	Artefact Scatter	
37-2-1762	PK152	AGD	56	295900	6421000	296005	6421189	Valid	1384	AFT :-	!AFT	Kuskie	Artefact Scatter	
37-2-1763	PK153	AGD	56	297900	6422000	298005	6422189	Valid	0	AFT :-	!AFT	Kuskie	Artefact Scatter	
37-2-1764	PK154	AGD	56	298100	6422100	298205	6422289	Valid	0	AFT :-	!AFT	Kuskie	Artefact Scatter	
37-2-1765	PK155	AGD	56	298800	6422100	298905	6422289	Valid	0	AFT :-	!AFT	Kuskie	Artefact Scatter	
37-2-1766	PK156	AGD	56	298750	6422300	298855	6422489	Valid	0	AFT :-	!AFT	Kuskie	Artefact Scatter	
37-2-1767	PK157	AGD	56	298400	6421000	298505	6421189	Valid	0	AFT :-	!AFT	Kuskie	Artefact Scatter	
37-2-1768	PK158	AGD	56	299000	6421500	299105	6421689	Valid	0	AFT :-	!AFT	Kuskie	Artefact Scatter	
37-2-1769	PK159	AGD	56	299350	6421100	299455	6421289	Valid	0	AFT :-	!AFT	Kuskie	Artefact Scatter	
37-2-1770	PK161	AGD	56	299700	6420750	299805	6420939	Valid	0	AFT :-	!IA	Kuskie	Isolated Artefact	
37-2-1771	PK163	AGD	56	295900	6420300	296005	6420489	Valid	1384	AFT :-	!AFT	Kuskie	Artefact Scatter	
37-2-1772	PK164	AGD	56	295500	6420350	295605	6420539	Valid	0	AFT :-	!AFT	Kuskie	Artefact Scatter	
37-2-1773	RP1	AGD	56	299700	6419900	299805	6420089	Valid	0	AFT :-	!AFT	Unknown Author	Artefact Scatter	
37-2-1774	RP2	AGD	56	299500	6419500	299605	6419689	Valid	0	AFT :-	!AFT	Unknown Author	Artefact Scatter	
37-2-1775	RP3	AGD	56	299500	6420000	299605	6420189	Valid	0	AFT :-	!AFT	Unknown Author	Artefact Scatter	
37-2-1776	RP7	AGD	56	299500	6418500	299605	6418689	Valid	1384	AFT :-	!AFT	Unknown Author	Artefact Scatter	
37-2-1777	RP9	AGD	56	299350	6418500	299455	6418689	Valid	1384	AFT :-	!AFT	Unknown Author	Artefact Scatter	
37-2-1778	RP10	AGD	56	299300	6418400	299405	6418589	Valid	0	AFT :-	!AFT	Unknown Author	Artefact Scatter	
37-2-1779	RP11	AGD	56	299250	6418200	299355	6418389	Valid	0	AFT :-	!AFT	Unknown Author	Artefact Scatter	
37-2-1780	RP12	AGD	56	299200	6418200	299305	6418389	Valid	0	AFT :-	!AFT	Unknown Author	Artefact Scatter	
37-2-1781	RP13	AGD	56	299350	6418200	299455	6418389	Valid	0	AFT :-	!IA	Unknown Author	Isolated Artefact	
37-2-1782	RP19	AGD	56	299050	6418000	299155	6418189	Valid	1384	AFT :-	!IA	Unknown Author	Isolated Artefact	
37-2-1783	RP21	AGD	56	299000	6418400	299105	6418589	Valid	0	AFT :-	!AFT	Unknown Author	Artefact Scatter	
37-2-1784	RP22	AGD	56	299000	6418500	299105	6418689	Valid	0	AFT :-	!AFT	Unknown Author	Artefact Scatter	
37-2-1785	RP25	AGD	56	299220	6418500	299325	6418689	Valid	0	AFT :-	!AFT	Unknown Author	Artefact Scatter	
37-2-1786	RP26	AGD	56	298600	6418250	298705	6418439	Valid	1384	AFT :-	!AFT	Unknown Author	Artefact Scatter	
37-2-1787	RP28	AGD	56	299200	6418700	299305	6418889	Valid	0	AFT :-	!AFT	Unknown Author	Artefact Scatter	

AHIMS Site #	AHIMS Site Name	Original Datum	Zone	AGD Easting	AGD Northing	MGA Easting	MGA Northing	Validity	AHIP Permit	Original Features	Review Feature Type	Original Recorder	AHIMS Site Types	AHIMS Reports #
37-2-1788	RP29	AGD	56	299100	6418900	299205	6419089	Valid	0	AFT :-	!AFT	Unknown Author	Artefact Scatter	
37-2-1789	RP31	AGD	56	298900	6418900	299005	6419089	Valid	0	AFT :-	!AFT	Unknown Author	Artefact Scatter	
37-2-1790	RP32	AGD	56	298800	6418900	298905	6419089	Valid	0	AFT :-	!AFT	Unknown Author	Artefact Scatter	
37-2-1791	RP35	AGD	56	300800	6419000	300905	6419189	Valid	0	AFT :-	!AFT	Unknown Author	Artefact Scatter	98357, 98373
37-2-1792	RP36	AGD	56	300700	6419300	300805	6419489	Valid	0	AFT :-	!AFT	Unknown Author	Artefact Scatter	98357, 98373
37-2-1793	RP38	AGD	56	300650	6419500	300755	6419689	Valid	0	AFT :-	!AFT	Unknown Author	Artefact Scatter	98373
37-2-1794	RP39	AGD	56	300700	6419550	300805	6419739	Valid	0	AFT :-	!AFT	Unknown Author	Artefact Scatter	98357, 98373
37-2-1795	RP40	AGD	56	300700	6419600	300805	6419789	Valid	0	AFT :-	!AFT	Unknown Author	Artefact Scatter	98357, 98373
37-2-1796	RP41	AGD	56	300700	6419700	300805	6419889	Valid	0	AFT :-	!AFT	Unknown Author	Artefact Scatter	98357, 98373
37-2-1797	RP42	AGD	56	300700	6419900	300805	6420089	Valid	0	AFT :-	!AFT	Unknown Author	Artefact Scatter	98357, 98373
37-2-1798	RP43	AGD	56	300600	6420250	300705	6420439	Valid	0	AFT :-	!AFT	Unknown Author	Artefact Scatter	98357, 98373
37-2-1799	RP44	AGD	56	300500	6420800	300605	6420989	Valid	0	AFT :-	!AFT	Unknown Author	Artefact Scatter	98357, 98373
37-2-1800	RP46	AGD	56	300500	6421500	300605	6421689	Valid	0	AFT :-	!AFT	Unknown Author	Artefact Scatter	
37-2-1801	RP47	AGD	56	300150	6420900	300255	6421089	Valid	0	AFT :-	!AFT	Unknown Author	Artefact Scatter	98357, 98373
37-2-1802	RP48	AGD	56	300100	6421100	300205	6421289	Valid	0	AFT :-	!AFT	Unknown Author	Artefact Scatter	
37-2-1803	RP51	AGD	56	300300	6421350	300405	6421539	Valid	0	AFT :-	!AFT	Unknown Author	Artefact Scatter	
37-2-1804	RP53	AGD	56	300400	6421600	300505	6421789	Valid	0	AFT :-	!AFT	Unknown Author	Artefact Scatter	
37-2-1805	RP55	AGD	56	300400	6421850	300505	6422039	Valid	0	AFT :-	!AFT	Unknown Author	Artefact Scatter	
37-2-1806	MB10	AGD	56	298100	6421000	298205	6421189	Valid	0	AFT :-	!AFT	Barber	Artefact Scatter	
37-2-1807	RP56	AGD	56	300000	6421500	300105	6421689	Valid	0	AFT :-	!AFT	Unknown Author	Artefact Scatter	
37-2-1808	RP57	AGD	56	299850	6421800	299955	6421989	Valid	0	AFT :-	!IA	Unknown Author	Isolated Artefact	
37-2-1809	RP59	AGD	56	299200	6421800	299305	6421989	Valid	0	AFT :-	!AFT	Unknown Author	Artefact Scatter	98449
37-2-1810	RP60	AGD	56	299500	6422650	299605	6422839	Valid	0	AFT :-	!AFT	Unknown Author	Artefact Scatter	
37-2-1811	RP61	AGD	56	299150	6422900	299255	6423089	Valid	0	AFT :-	!IA	Unknown Author	Isolated Artefact	
37-2-1812	RP63	AGD	56	299130	6423200	299235	6423389	Valid	0	AFT :-	!AFT	Unknown Author	Artefact Scatter	
37-2-1813	RP64	AGD	56	300990	6420700	301095	6420889	Valid	0	AFT :-	!AFT	Unknown Author	Artefact Scatter	98357, 98373
37-2-1814	RP65	AGD	56	298950	6424000	299055	6424189	Valid	0	AFT :-	!AFT	Unknown Author	Artefact Scatter	
37-2-1815	RP66	AGD	56	298900	6424000	299005	6424189	Valid	0	AFT :-	!AFT	Unknown Author	Artefact Scatter	
37-2-1816	RP67	AGD	56	299000	6423750	299105	6423939	Valid	0	AFT :-	!AFT	Unknown Author	Artefact Scatter	
37-2-1817	RP68	AGD	56	298800	6424000	298905	6424189	Valid	0	AFT :-	!AFT	Unknown Author	Artefact Scatter	
37-2-1818	RP70	AGD	56	301500	6421500	301605	6421689	Valid	0	AFT :-	!AFT	Unknown Author	Artefact Scatter	
37-2-1819	RP76	AGD	56	301550	6421200	301655	6421389	Valid	0	AFT :-	!AFT	Unknown Author	Artefact Scatter	
37-2-1820	RP77	AGD	56	301700	6421100	301805	6421289	Valid	1384	AFT :-	!IA	Unknown Author	Isolated Artefact	
37-2-1821	RP82	AGD	56	301700	6420900	301805	6421089	Valid	0	AFT :-	!AFT	Unknown Author	Artefact Scatter	98357, 98373
37-2-1822	RP84	AGD	56	301850	6420850	301955	6421039	Valid	0	AFT :-	!AFT	Unknown Author	Artefact Scatter	98357, 98373
37-2-1823	RP86	AGD	56	301400	6420800	301505	6420989	Valid	1384	AFT :-	!AFT	Unknown Author	Artefact Scatter	98357, 98373
37-2-1824	RP94	AGD	56	301600	6420600	301705	6420789	Valid	0	AFT :-	!AFT	Unknown Author	Artefact Scatter	98357, 98373
37-2-1825	RP98	AGD	56	302000	6420500	302105	6420689	Valid	0	AFT :-	!AFT	Unknown Author	Artefact Scatter	98357, 98373
37-2-1826	RP99	AGD	56	300750	6418200	300855	6418389	Valid	0	AFT :-	!IA	Unknown Author	Isolated Artefact	98357, 98373
37-2-1827	RP102	AGD	56	300700	6418300	300805	6418489	Valid	1384	AFT :-	!AFT	Unknown Author	Artefact Scatter	98357, 98373
37-2-1828	RP106	AGD	56	300600	6418350	300705	6418539	Valid	1384	AFT :-	!IA	Unknown Author	Isolated Artefact	98357, 98373
37-2-1829	RP107	AGD	56	300660	6418400	300765	6418589	Valid	1384	AFT :-	!IA	Unknown Author	Isolated Artefact	98357, 98373
37-2-1830	RP108	AGD	56	300770	6418400	300875	6418589	Valid	1384	AFT :-	!AFT	Unknown Author	Artefact Scatter	98357, 98373
37-2-1831	RP109	AGD	56	300690	6418500	300795	6418689	Valid	1384	AFT :-	!AFT	Unknown Author	Artefact Scatter	98357, 98373
37-2-1832	RP110	AGD	56	300710	6418600	300815	6418789	Valid	0	AFT :-	!AFT	Unknown Author	Artefact Scatter	98357, 98373
37-2-1833	RP111	AGD	56	300500	6419800	300605	6419989	Valid	0	AFT :-	!AFT	Unknown Author	Artefact Scatter	98357, 98373
37-2-1834	RP112	AGD	56	300200	6420500	300305	6420689	Valid	0	AFT :-	!AFT	Unknown Author	Artefact Scatter	98357, 98373
37-2-1835	RP113	AGD	56	299200	6421500	299305	6421689	Valid	0	AFT :-	!AFT	Unknown Author	Artefact Scatter	98449
37-2-1836	RP114	AGD	56	295600	6419800	295705	6419989	Valid	0	AFT :-	!AFT	Unknown Author	Artefact Scatter	
37-2-1837	RP115	AGD	56	295750	6419500	295855	6419689	Valid	1384	AFT :-	!AFT	Unknown Author	Artefact Scatter	
37-2-1838	RP116	AGD	56	295900	6420500	296005	6420689	Valid	1384	AFT :-	!AFT	Unknown Author	Artefact Scatter	
37-2-1839	CC1	AGD	56	294500	6421000	294605	6421189	Valid	0	AFT :-	!AFT	Unknown Author	Artefact Scatter	

AHIMS Site #	AHIMS Site Name	Original Datum	Zone	AGD Easting	AGD Northing	MGA Easting	MGA Northing	Validity	AHIP Permit	Original Features	Review Feature Type	Original Recorder	AHIMS Site Types	AHIMS Reports #
37-2-1840	No Name Creek	AGD	56	294250	6419750	294355	6419939	Valid	0	AFT : -	!AFT	Unknown Author	Artefact Scatter	101010
37-2-1849	IS2	AGD	56	301300	6419200	301405	6419389	Valid	0	AFT : -	!AFT	Kuskie	Artefact Scatter	98357, 98373
37-2-1851	EC1	AGD	56	302400	6419800	302505	6419989	Valid	0	AFT : -	!AFT	Kuskie	Artefact Scatter	98357, 98373, 100550
37-2-1852	IS5	AGD	56	301400	6419250	301505	6419439	Valid	0	AFT : -	!AFT	Kuskie	Artefact Scatter	98357, 98373
37-2-1853	BC3	AGD	56	298700	6417700	298805	6417889	Valid	0	AFT : -	!AFT	Kuskie	Artefact Scatter	
37-2-1854	BC9	AGD	56	298500	6417750	298605	6417939	Valid	0	AFT : -	!AFT	Kuskie	Artefact Scatter	
37-2-1855	BC8(location need to be checked)	AGD	56	298300	6418000	298405	6418189	Valid	0	AFT : -	!AFT	Kuskie	Artefact Scatter	
37-2-1856	BC17	AGD	56	298200	6418100	298305	6418289	Valid	0	AFT : -	!AFT	Kuskie	Artefact Scatter	
37-2-1857	BC15	AGD	56	298450	6418050	298555	6418239	Valid	0	AFT : -	!AFT	Kuskie	Artefact Scatter	
37-2-1858	BC12	AGD	56	298500	6417950	298605	6418139	Valid	0	AFT : -	!AFT	Kuskie	Artefact Scatter	
37-2-1859	BC18	AGD	56	298150	6418150	298255	6418339	Valid	0	AFT : -	!AFT	Kuskie	Artefact Scatter	
37-2-1919	CC100	AGD	56	299500	6424000	299605	6424189	Valid	0	AFT : -	!AFT	Kuskie	Artefact Scatter	
37-2-1920	AD4	AGD	56	297800	6424800	297905	6424989	Valid	0	AFT : -	!AFT	Kuskie	Artefact Scatter	
37-2-1921	RP105	AGD	56	300720	6418900	300825	6419089	Valid	0	AFT : -	!AFT	Kuskie	Artefact Scatter	98357, 98373
37-2-1922	MB16	AGD	56	298900	6419700	299005	6419889	Valid	0	AFT : -	!AFT	Kuskie	Artefact Scatter	
37-2-2236	JF/MJS 3	GDA	56	300152	6415314	300152	6415314	Valid	0	AFT : -	!AFT	Sutton, Ford	Artefact Scatter	
37-2-2237	JF/MSJ 4	GDA	56	299244	6416431	299244	6416431	Valid	0	AFT : -	!AFT	Sutton, Ford	Artefact Scatter	
37-2-2238	JF/MJS 5	GDA	56	299684	6416479	299684	6416479	Valid	0	AFT : -	!AFT	Sutton, Ford	Artefact Scatter	
37-2-2239	JF/MJS 6	GDA	56	300386	6416593	300386	6416593	Valid	0	AFT : -	!AFT	Sutton, Ford	Artefact Scatter	
37-2-2240	JF/MJS 7	GDA	56	299685	6415314	299685	6415314	Valid	0	AFT : -	!AFT	Sutton, Ford	Artefact Scatter	
37-2-2241	JF/MJS 8	GDA	56	299657	6416545	299657	6416545	Valid	0	AFT : -	!AFT	Sutton, Ford	Artefact Scatter	
37-2-2335	Saddler's S3	GDA	56	301424	6417229	301424	6417229	Valid	0	AFT : -	!AFT	Hamm	Artefact Scatter	
37-2-2336	Saddler's S2	GDA	56	301267	6416314	301267	6416314	Valid	0	AFT : -	!AFT	Hamm	Artefact Scatter	
37-2-2337	Saddler's S1	GDA	56	301272	6416267	301272	6416267	Valid	0	AFT : -, PAD : -	!AFT	Hamm	Artefact Scatter	
37-2-2595	hr02	GDA	56	291010	6418197	291010	6418197	Valid	0	AFT : -	!AFT	Umwelt (Australia) Pty Limited, Sutton, Ford	Artefact Scatter	
37-2-2596	hr03	GDA	56	291233	6418304	291233	6418304	Valid	0	AFT : -	!AFT	Umwelt (Australia) Pty Limited	Artefact Scatter	
37-2-2634	WCO7	GDA	56	291859	6415244	291859	6415244	Valid	0	AFT : -	!AFT	Sutton, Ford	Artefact Scatter	
37-2-2677	BS2 (Muswellbrook)	GDA	56	296550	6417250	296550	6417250	Valid	0	AFT : -	!AFT	Curran	Artefact Scatter	3008
37-2-2034	Bayswater	AGD	56	294200	6417800	294305	6417989	Valid	0	AFT : 6	AFT	National Parks & Wildlife Service	Artefact Scatter	
37-2-2234	JF/MJS 1	GDA	56	300069	6416243	300069	6416243	Valid	0	AFT : 23	AFT	Sutton, Ford	Artefact Scatter	
37-2-2235	JF/MJS 2	GDA	56	300831	6416759	300831	6416759	Valid	0	AFT : 2	AFT	Sutton, Ford	Artefact Scatter	
37-2-2597	qc01	GDA	56	294298	6419507	294298	6419507	Valid	0	AFT : 30	AFT	Ford	Artefact Scatter	
37-2-2599	qc03	GDA	56	293504	6420156	293504	6420156	Valid	0	AFT : 19	AFT	Ford	Artefact Scatter	
37-2-2600	qc04	GDA	56	294037	6420084	294037	6420084	Valid	0	AFT : 2	AFT	Ford	Artefact Scatter	
37-2-2601	qc05	GDA	56	293721	6418096	293721	6418096	Valid	0	AFT : 153	AFT	Ford	Artefact Scatter	
37-2-2602	qc06	GDA	56	293833	6418718	293833	6418718	Valid	0	AFT : 27	AFT	Ford	Artefact Scatter	
37-2-2603	qc07	GDA	56	292940	6418416	292940	6418416	Valid	0	AFT : 12	AFT	Ford	Artefact Scatter	
37-2-2604	qc08	GDA	56	292853	6418226	292853	6418226	Valid	0	AFT : 10	AFT	Ford	Artefact Scatter	
37-2-2605	qc09	GDA	56	293017	6417891	293017	6417891	Valid	0	AFT : 22	AFT	Ford	Artefact Scatter	
37-2-2606	qc10	GDA	56	292479	6418526	292479	6418526	Valid	0	AFT : 3	AFT	Ford	Artefact Scatter	
37-2-2607	qc11	GDA	56	292164	6417810	292164	6417810	Valid	0	AFT : 18	AFT	Ford	Artefact Scatter	
37-2-2608	qc12	GDA	56	293567	6416650	293567	6416650	Valid	0	AFT : 20	AFT	Ford	Artefact Scatter	
37-2-2610	qc14	GDA	56	292277	6417374	292277	6417374	Valid	0	AFT : 22	AFT	Ford	Artefact Scatter	
37-2-2613	qc17	GDA	56	292385	6419144	292385	6419144	Valid	0	AFT : 7	AFT	Ford	Artefact Scatter	
37-2-2615	qc19	GDA	56	292002	6418816	292002	6418816	Valid	0	AFT : 4	AFT	Ford	Artefact Scatter	
37-2-2616	qc20	GDA	56	294494	6419564	294494	6419564	Valid	0	AFT : 4	AFT	Ford	Artefact Scatter	
37-2-2618	sc01	GDA	56	300792	6415722	300792	6415722	Valid	0	AFT : 1395	AFT	Ford	Artefact Scatter	
37-2-2619	sc02	GDA	56	297044	6413543	297044	6413543	Valid	0	AFT : 118	AFT	Ford	Artefact Scatter	
37-2-2620	sc13	GDA	56	294022	6414717	294022	6414717	Valid	0	AFT : 3	AFT	Ford	Artefact Scatter	

AHIMS Site #	AHIMS Site Name	Original Datum	Zone	AGD Easting	AGD Northing	MGA Easting	MGA Northing	Validity	AHIP Permit	Original Features	Review Feature Type	Original Recorder	AHIMS Site Types	AHIMS Reports #
37-2-2621	sc15	GDA	56	296032	6413259	296032	6413259	Valid	0	AFT : 3	AFT	Ford	Artefact Scatter	
37-2-2635	WCO8	GDA	56	291850	6415226	291850	6415226	Valid	0	AFT : 2	AFT	Sutton, Ford	Artefact Scatter	
37-2-2644	WC17.	GDA	56	291848	6415423	291848	6415423	Valid	0	AFT : 7	AFT	Sutton, Ford	Artefact Scatter	
37-2-2649	WC22.	GDA	56	292331	6416224	292331	6416224	Valid	0	AFT : 4	AFT	Sutton, Ford	Artefact Scatter	
37-2-2654	SC23.	GDA	56	293203	6413442	293203	6413442	Valid	0	AFT : 22	AFT	Sutton, Ford	Artefact Scatter	
37-2-2655	SC24.	GDA	56	293470	6413251	293470	6413251	Valid	0	AFT : 2	AFT	Sutton, Ford	Artefact Scatter	
37-2-2657	SC26.	GDA	56	295545	6415566	295545	6415566	Valid	0	AFT : 3	AFT	Sutton, Ford	Artefact Scatter	
37-2-2658	SC27.	GDA	56	291875	6415309	291875	6415309	Valid	0	AFT : 12	AFT	Sutton, Ford	Artefact Scatter	
37-2-2662	WC04.	GDA	56	291057	6417414	291057	6417414	Valid	0	AFT : 24	AFT	Sutton, Ford	Artefact Scatter	
37-2-2663	WC05.	GDA	56	291296	6417051	291296	6417051	Valid	0	AFT : 8	AFT	Sutton, Ford	Artefact Scatter	
37-2-2664	WC06.	GDA	56	292305	6417349	292305	6417349	Valid	0	AFT : 4	AFT	Sutton, Ford	Artefact Scatter	
37-2-2668	SC22	GDA	56	293341	6413290	293341	6413290	Valid	0	AFT : 4	AFT	Sutton, Ford	Artefact Scatter	
37-2-2669	HRO1	GDA	56	290851	6418023	290851	6418023	Valid	0	AFT : 14	AFT	Sutton, Ford	Artefact Scatter	
37-2-2678	BS5 (Muswellbrook)	GDA	56	296500	6417000	296500	6417000	Valid	0	AFT : 2	AFT	Curran	Artefact Scatter	3008, 3398
37-2-2679	BS6 (Muswellbrook)	GDA	56	296350	6416900	296350	6416900	Valid	0	AFT : 2	AFT	Curran	Artefact Scatter	3008, 3398
37-2-2681	BS8 (Muswellbrook)	GDA	56	296950	6417150	296950	6417150	Valid	0	AFT : 2	AFT	Curran	Artefact Scatter	3008
37-2-2682	PSP5 (Muswellbrook)	GDA	56	297190	6416650	297190	6416650	Valid	0	AFT : 2	AFT	Curran	Artefact Scatter	3008, 3398
37-2-2609	qc13	GDA	56	293994	6420296	293994	6420296	Valid	0	AFT : 1	IA	Ford	Isolated Artefact	
37-2-2611	qc15	GDA	56	294699	6419919	294699	6419919	Valid	0	AFT : 1	IA	Ford	Isolated Artefact	
37-2-2612	qc16	GDA	56	293105	6418109	293105	6418109	Valid	0	AFT : 1	IA	Ford	Isolated Artefact	
37-2-2614	qc18	GDA	56	291794	6418035	291794	6418035	Valid	0	AFT : 1	IA	Ford	Isolated Artefact	
37-2-2617	qc21	GDA	56	293174	6416415	293174	6416415	Valid	0	AFT : 1	IA	Ford	Isolated Artefact	
37-2-2623	sc17	GDA	56	295917	6412840	295917	6412840	Valid	0	AFT : 1	IA	Ford	Isolated Artefact	
37-2-2624	sc18	GDA	56	295312	6413315	295312	6413315	Valid	0	AFT : 1	IA	Ford	Isolated Artefact	
37-2-2636	WC09A	GDA	56	291853	6417566	291853	6417566	Valid	0	AFT : 1	IA	Sutton, Ford	Isolated Artefact	
37-2-2646	WC19.	GDA	56	292793	6416629	292793	6416629	Valid	0	AFT : 1	IA	Sutton, Ford	Isolated Artefact	
37-2-2647	WC20.	GDA	56	292798	6416600	292798	6416600	Valid	0	AFT : 1	IA	Sutton, Ford	Isolated Artefact	
37-2-2648	WC21.	GDA	56	292794	6416548	292794	6416548	Valid	0	AFT : 1	IA	Sutton, Ford	Isolated Artefact	
37-2-2650	WC23.	GDA	56	291831	6415851	291831	6415851	Valid	0	AFT : 1	IA	Sutton, Ford	Isolated Artefact	
37-2-2651	WC24.	GDA	56	291775	6415871	291775	6415871	Valid	0	AFT : 1	IA	Sutton, Ford	Isolated Artefact	
37-2-2656	SC25.	GDA	56	294093	6415671	294093	6415671	Valid	0	AFT : 1	IA	Sutton, Ford	Isolated Artefact	
37-2-2665	SC19.	GDA	56	295385	6413277	295385	6413277	Valid	0	AFT : 1	IA	Sutton, Ford	Isolated Artefact	
37-2-2666	SC20.	GDA	56	294215	6413556	294215	6413556	Valid	0	AFT : 1	IA	Sutton, Ford	Isolated Artefact	
37-2-2667	SC21.	GDA	56	293421	6413195	293421	6413195	Valid	0	AFT : 1	IA	Sutton, Ford	Isolated Artefact	
37-2-2676	BS1 (Muswellbrook)	GDA	56	296150	6416900	296150	6416900	Valid	0	AFT : 1	IA	Curran	Isolated Artefact	3008, 3398
37-2-2680	BS7 (Muswellbrook)	GDA	56	296500	6417000	296500	6417000	Valid	0	AFT : 1	IA	Curran	Isolated Artefact	3008
37-2-2334	Saddler's S4	GDA	56	301186	6416909	301186	6416909	Valid	0	PAD : -	PAD	Hamm	Potential Archaeological Deposit	
37-2-2598	qc02	GDA	56	293553	6417211	293553	6417211	Valid	0	TRE : -	ST	Ford	Scarred Tree	
37-3-0111	37-3-0111	GDA	56	0	0	298666.5	6417866		0		GDG		Grinding Groove	
	MAC1	GDA	56	0	0	298368	6418077		0		AS	HLA	Artefact scatter	
	MAC2	GDA	56	0	0	298363.2	6418213		0		AS	HLA	Artefact scatter	
	MAC3	GDA	56	0	0	298298.8	6418218		0		AS	HLA	Artefact scatter	
	MAC4	GDA	56	0	0	298491.2	6418053		0		AS	HLA	Artefact scatter	
	MAC5	GDA	56	0	0	298604.1	6417858		0		AS	HLA	Artefact scatter	
	MAC6	GDA	56	0	0	298650.5	6417805		0		AS	HLA	Artefact scatter	
	MAC7	GDA	56	0	0	298661	6417845		0		IA	HLA	Isolated Artefact	
	MAC8	GDA	56	0	0	298589.7	6417901		0		IA	HLA	Isolated Artefact	
	MAC9	GDA	56	0	0	298234.7	6418184		0		AS	HLA	Artefact scatter	
	MAC10	GDA	56	0	0	297902.7	6418355		0		AS	HLA	Artefact scatter	
	MAC11	GDA	56	0	0	297480.3	6418357		0		AS	HLA	Artefact scatter	
	MAC12	GDA	56	0	0	297650.8	6418277		0		AS	HLA	Artefact scatter	
	MAC13	GDA	56	0	0	297290.7	6418316		0		AS	HLA	Artefact scatter	

AHIMS Site #	AHIMS Site Name	Original Datum	Zone	AGD Easting	AGD Northing	MGA Easting	MGA Northing	Validity	AHIP Permit	Original Features	Review Feature Type	Original Recorder	AHIMS Site Types	AHIMS Reports #
MAC14		GDA	56	0	0	297485.5	6418302		0		IA	HLA	Isolated Artefact	
MAC15		GDA	56	0	0	292639.6	6421306		0		IA	HLA	Isolated Artefact	
	Previous MAU	GDA	56	0	0	292663.9	6419817		0		IA	HLA	Isolated Artefact	
MAC26		GDA	56	0	0	298176.6	6417954		0		IA	HLA	Isolated Artefact	
MAC27		GDA	56	0	0	297790.6	6418188		0		IA	HLA	Isolated Artefact + PAD	
MAC28		GDA	56	0	0	298090	6417935		0		IA	HLA	Isolated Artefact	
MAC29		GDA	56	0	0	298041.5	6417830		0		IA	HLA	Isolated Artefact	
MAC30		GDA	56	0	0	297954.1	6417914		0		IA	HLA	Isolated Artefact	
MAC33		GDA	56	0	0	297323.2	6417873		0		IA	HLA	Isolated Artefact	
MAC34		GDA	56	0	0	297236.1	6417824		0		IA	HLA	Isolated Artefact	
MAC35		GDA	56	0	0	297275.8	6417748		0		IA	HLA	Isolated Artefact	
MAC36		GDA	56	0	0	297824.5	6417736		0		IA	HLA	Isolated Artefact	
MAC37		GDA	56	0	0	297860.5	6417753		0		IA	HLA	Isolated Artefact	
MAC38		GDA	56	0	0	297582.3	6417896		0		AS	HLA	Artefact scatter	
MAC39		GDA	56	0	0	297726.9	6417905		0		IA	HLA	Isolated Artefact	
MAC50		GDA	56	0	0	300651	6422534		0		IA	HLA	Isolated Artefact	

Appendix 4: Summary of Key Recommendations from Consultation

Recommended Commitments:

- Establishment of the proposed Saddlers Creek Conservation Agreement to be conserved in perpetuity for its ecological and Aboriginal cultural heritage values. The proposed Conservation Area will be managed in accordance with the requirements of the Conservation Agreement;
- Through ongoing consultation with the Aboriginal community (e.g. via a Cultural Heritage Working Group), fund and construct a 'Keeping Place' and/or invest in existing infrastructure to fulfil 'Keeping Place' functions, during the period of this Project. This Keeping Place or Keeping Places may be across-company mining industry collaboration. The 'Keeping Place' will store artefacts salvaged as part of the project and should be staffed by appropriately trained Aboriginal community representatives, or as otherwise agreed with Mt Arthur Coal;
- Draft site specific management plans for both onsite conservation areas as well as the offset area, need to be developed. These plans will cover conservation and management of both the cultural heritage as well as ecological and biodiversity values of the areas. Provision of facilities in the offset area for either teaching purposes and/or recreational purposes will also be considered as part of the offset plan.
- Fund a Cultural Heritage Training & Capacity Building Program, during the period of this project, for registered Aboriginal stakeholder groups, the Cultural Heritage Working Group and/or broader Aboriginal community including activities such as:
 - Community Cultural Knowledge mentoring workshops; and or
 - "Collections Training" at the Australian Museum (or similar training) for staffing of the proposed 'Keeping Place'; and or
 - Site recording, artefact recording and basic analysis.
- Establish a Cultural Heritage Working Group including at least five representatives from the Aboriginal community to guide the ongoing management of sites within the EA Boundary and the Offset Area and provide advice on all other Cultural Heritage matters for the duration of this project.

Mechanism for Aboriginal Input into Cultural Heritage

- Cultural Heritage Working Group - initial primary focus to provide input into site specific cultural heritage management/land management plans for the offset area and both of the onsite conservation areas; and
- Occasional broader Aboriginal community input e.g. meetings or barbecues.

Appendix 5: Correspondence Records

Telephone correspondence on 16 March 2011, 3.38pm

Steve Perkins from Mt Arthur Coal contacted Steve Clair from the Department of Environment, Climate Change and Water (now Office of Environment and Heritage) on 16 March 2011 and asked if Mt Arthur Coal could meet with him to review Management Plans. Steve Clair advised that the Department of Environment, Climate Change and Water does not provide comment on Management Plans. Steve Clair informed Steve Perkins that he could send the Management Plans to him for review, but that he would not submit any comments on the Management Plans.



Office of
Environment
& Heritage

Our reference: DOC11/30686, LIC07/2093-06
Contact: Steve Clair, 02 4908 6850

[7 JUL 2011

Mr Steve Perkins
Environmental Superintendent
Mt Arthur Coal
Thomas Mitchell Drive
MUSWELLBROOK NSW 2333

Dear Mr Perkins

Aboriginal Heritage Management Plan

Thankyou for forwarding the subject plan for our review and records.

The Office of Environment and Heritage (OEH) encourages the development of such plans to ensure that proponents have determined how they will meet their statutory obligations and designated environmental objectives. However, OEH does not review these documents as our role is to set environmental objectives for environmental/conservation management, not to be directly involved in the development of strategies to achieve those objectives.

Should you have any questions please phone Mr Steve Clair on 02 4908 6850.

Yours sincerely



7.7.11

BILL GEORGE
A/Head Regional Operations Unit – Hunter
Environment Protection and Regulation
Office of Environment and Heritage
Department of Premier and Cabinet

The Department of Environment, Climate Change and Water is now known as the
Office of Environment and Heritage, Department of Premier and Cabinet

PO Box 488G Newcastle NSW 2300
117 Bull Street,
Newcastle West NSW 2302
Tel: (02) 4908 6800 Fax: (02) 4908 6810
ABN 30 841 387 271
www.environment.nsw.gov.au



Contact: Ben Harrison
Phone: 02 6575 3402
Fax: 02 6575 3515
Email: benjamin.harrison@planning.nsw.gov.au

Our ref: 10/20755

Michael White
General Manager Operations
Mt Arthur Coal
PMB 8
MUSWELLBROOK NSW 2333

Dear Mr White,

**Mt Arthur Coal Mine – PA 09_0062
Environmental Monitoring and Management Plans**

Thank you for forwarding the following management plans required under project approval 09_0062 for the Department's consideration:

- Aboriginal Heritage Management Plan (Condition 45 of Schedule 3);
- Site Water Balance (Condition 30 of Schedule 3);
- Erosion and Sediment Control Plan (Condition 31 of Schedule 3)
- Surface Water Monitoring Program (Condition 32 of Schedule 3);
- Ground Water Monitoring Program (Condition 33 of Schedule 3);
- Surface and Ground Water Response Plan (Condition 34 of Schedule 3)

The Department has reviewed these plans (as amended following previous correspondence) and is satisfied that they generally address the requirements set out in the relevant conditions of the project approval. Consequently, I would like to advise you that the Director-General has approved the plans.

Could you please forward finalised copies of the above plans for the Department's records at your earliest convenience.

Should you have any enquiries on this matter please contact Ben Harrison on (02) 6575 3402.

Scott Brooks
Team Leader Compliance
20-8-2012
As Nominee for the Director-General