



# Report

## Red Hill Mining Lease Contaminated Land Preliminary Site Investigation

OCTOBER 2013

Prepared for  
BM Alliance Coal Operations Pty Ltd

42627136

**URS**

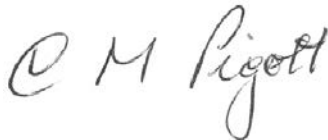
Project Manager:



Chris Taylor  
Senior Associate

**URS Australia Pty Ltd**  
**Level 17, 240 Queen Street**  
**Brisbane, QLD 4000**  
**GPO Box 302, QLD 4001 Australia**

Principal-In-Charge:



Chris Piggot  
Senior Principal

**T: 61 7 3243 2111**  
**F: 61 7 3243 2199**

Author:



Janelle Kuter  
Associate Geophysicist

Reviewer:



Daymion Jenkins  
Senior Principal

Date: **October 2013**  
Reference:  
Status: **42627136**  
**FINAL**

**© Document copyright of URS Australia Pty Limited.**

This report is submitted on the basis that it remains commercial-in-confidence. The contents of this report are and remain the intellectual property of URS and are not to be provided or disclosed to third parties without the prior written consent of URS. No use of the contents, concepts, designs, drawings, specifications, plans etc. included in this report is permitted unless and until they are the subject of a written contract between URS Australia and the addressee of this report. URS Australia accepts no liability of any kind for any unauthorised use of the contents of this report and URS reserves the right to seek compensation for any such unauthorised use.

**Document delivery**

**URS Australia** provides this document in either printed format, electronic format or both. URS considers the printed version to be binding. The electronic format is provided for the client's convenience and URS requests that the client ensures the integrity of this electronic information is maintained. Storage of this electronic information should at a minimum comply with the requirements of the Commonwealth Electronic Transactions Act (ETA) 2000.

Where an electronic only version is provided to the client, a signed hard copy of this document is held on file by URS and a copy will be provided if requested.

## Table of Contents

<b>Executive Summary .....</b>	<b>vi</b>
<b>1 Introduction.....</b>	<b>1</b>
1.1 General.....	1
1.2 Objectives.....	2
1.3 Scope of Works.....	2
<b>2 Site Information .....</b>	<b>3</b>
2.1 Site Locality.....	3
2.2 Title Information.....	3
2.3 Zoning Information .....	3
2.4 Site Use.....	3
2.4.1 Current Use .....	3
2.4.2 Proposed Use.....	3
<b>3 Environmental Setting.....</b>	<b>5</b>
3.1 Regional Geology and Hydrogeology.....	5
3.2 Groundwater Database.....	5
3.3 Surface Water .....	6
3.4 Topography .....	6
3.5 Neighbouring Land Use .....	6
<b>4 Review of Historical Information.....</b>	<b>7</b>
4.1 Site History .....	7
4.1.1 Certificates of Title.....	7
4.1.2 Aerial Photographs.....	7
4.2 EHP Priority Sites Register .....	14
4.3 Isaac Regional Council Licence Searches .....	16
<b>5 Site Visit .....</b>	<b>17</b>
5.1 Site Inspection and Interviews .....	17
5.2 Topography / Site Features.....	17
5.3 Buildings.....	17
5.4 Primary Areas of Concern.....	18
5.4.1 Site 1 – Riverside Homestead.....	18
5.4.2 Site 2 – Broadmeadow Homestead.....	19

## Table of Contents

5.4.3	Site 3 – Broadmeadow Stock Yard.....	20
5.5	Secondary Areas of Concern.....	20
5.5.1	Site 4 and Site 5 – Broadmeadow Cottages 1 and 2 .....	20
5.5.2	Site 6 – Star Crushing / Quarry.....	20
5.5.3	Site 7 and Site 8 – Soil Stockpiles.....	21
5.5.4	Site 9 and Site 10 – Red Hill Heritage or Archaeological Sites .....	21
5.5.5	Portable Fuel Storage for Mobile Plant.....	21
5.6	Areas of Approved Environmentally Relevant Activities .....	21
6	Summary and Recommendations .....	23
6.1	Primary Areas of Concern.....	23
6.2	Secondary areas of concern .....	23
6.3	Areas of Approved Environmentally Relevant Activities .....	24
6.4	Recommendations.....	24
7	Conclusions and Limitations.....	25
7.1	Conclusions .....	25
7.2	Phase 1 Report Limitation Statements .....	27
8	References .....	28
	Limitations Statement .....	56
<b>Tables</b>		
Table 4-1	Historical Aerial Photography Review.....	8
Table 4-2	EHP Priority Sites Register .....	15
<b>Figures</b>		
Figure 1	Locality Plan	
Figure 2	Existing Tenure	
Figure 3	Existing Mine Tenure and EHP Priority Registered Sites	
Figure 4	Areas of Potential Concern	

## Table of Contents

### Plates

Plate B-1	Riverside Homestead - Stockyards with Crush and Stock Dip In Background (2009)
Plate B-2	Riverside Homestead - Stockyards, Crush and Stock Dip (2009)
Plate B-3	Riverside Homestead - Stock Dip (2009)
Plate B-4	Riverside Homestead - AST Fuel Storage (2009)
Plate B-5	Riverside Homestead - AST Fuel Storage (2009)
Plate B-6	Riverside Homestead - AST Fuel Storage (2006)
Plate B-7	Riverside Homestead - Portable Fuel Storage (2009)
Plate B-8	Riverside Homestead - Portable Fuel Storage (2009)
Plate B-9	Riverside Homestead - Portable Fuel Storage (2009)
Plate B-10	Riverside Homestead - 205 L Drum Storage Including Unleaded Petrol, and Oil (2009)
Plate B-11	Riverside Homestead - Aviation Gas (2006)
Plate B-12	Riverside Homestead - Waste Oil Storage (2009)
Plate B-13	Riverside Homestead- Waste Oil Storage (2006)
Plate B-14	Riverside Homestead - Field with Redundant Farm Equipment and Truck Parts (2009)
Plate B-15	Riverside Homestead - Defunct Farm equipment (2009)
Plate B-16	Broadmeadow Homestead - Stockyards (2009)
Plate B-17	Broadmeadow Homestead - Stockyard and Crush (2009)
Plate B-18	Broadmeadow Homestead - Storage Shed with Portable Fuel Storage (2009)
Plate B-19	Broadmeadow Homestead - Close Up of Fuel Storage (2009)
Plate B-20	Broadmeadow Homestead - Close up of Oil Storage (2009)
Plate B-21	Broadmeadow Homestead - Close Up Of Waste Oil Storage Outside Vehicle Storage Shed (2009)
Plate B-22	Broadmeadow Homestead - Close up of Additional Waste Oil Storage (2009)
Plate B-23	Broadmeadow Homestead - Field Containing Large Cable Reel, Redundant Truck Parts (2009)
Plate B-24	Broadmeadow Stockyard illustrating Crush and Loading Ramp (2009)
Plate B-25	Broadmeadow Stockyard - Run Leading to Dip (2009)
Plate B-26	Broadmeadow Stockyard - Dip (2009)
Plate B-27	Broadmeadow Stockyard - Discarded Cans Of Barricade S Cattle Dip and Spray Near Dip (2009)
Plate B-28	Broadmeadow Cottage 1 - Red Hill Road Looking North (2009)
Plate B-29	Broadmeadow Cottage 1 - Red Hill Road Looking North (2009)
Plate B-30	Broadmeadow Cottage 2 - Front View of House (2009)

## Table of Contents

Plate B-31	Broadmeadow Cottage 2 - Rear View of House (2009)
Plate B-32	Star Crushing - Front Entrance (2009)
Plate B-33	Eastern Exploration Area - Soil Stockpile close to Star Crushing Area (2009)
Plate B-34	Western Exploration Area - Soil Stockpile near Railway (2009)
Plate B-35	Mobile Plant - Diesel Storage (2009)
Plate B-36	Exploration Drillhole Sump - Residual Waste Water Fenced off (2009)

## Appendices

Appendix A	Current and Historical Certificates of Title
Appendix B	EHP Priority Sites Register Search
Appendix C	Environmentally Relevant Activities and Notifiable Activities within Current Mining Operations

## Abbreviations

Abbreviation	Description
ACM	asbestos containing material
AST	above ground storage tank
BMA	BHP Billiton Mitsubishi Alliance
BRM	Broadmeadow underground mine
CHPP	coal handling and preparation plant
CLR	Contaminated Land Register
EHP	Department of Environment and Heritage Protection
EIS	Environmental Impact Statement
EMR	Environmental Management Register
EPA	Environmental Protection Authority
EP Act	<i>Environmental Protection Act 1994</i>
EPC(s)	Exploration Permit(s) (Coal)
ERA	Environmentally Relevant Activity
FY	financial year
GRB	Goonyella, Riverside and Broadmeadow
GRM	Goonyella Riverside Mine
IRC	Isaac Regional Council
JORC	Joint Ore Reserves Committee
MDL	mineral development licence
MIA	mine industrial area
ML	mining lease
MLA	mining lease application
RHM	Red Hill Mine
PSI	Preliminary Site Investigation
ToR	Terms of Reference
URS	URS Australia Pty Ltd

Unit	Description
g/L	grams per litre
ha	hectare
km	kilometre(s)
L	litres
L/s	litres per second
m	metres
m <sup>3</sup>	cubic metres
mg/L	milligrams per litre
mm	millimetres
t	tonne(s)

## Executive Summary

URS Australia Pty Ltd (URS) was appointed by BHP Billiton Mitsubishi Alliance (BMA) to prepare a Preliminary Site Investigation (PSI) for the Red Hill Mining Lease (the project) to fulfil the Terms of Reference (ToR) of the environmental impact statement (EIS). The objective of the preliminary site investigation was to examine and identify any environmental issues or risks that have a potential to impact the environment within the EIS study area as a result of land contamination caused by current and/or past land use practices, and that may be a liability for future owners or operators of the site.

The PSI comprised a desktop review including historical and current title searches, historical aerial photographs, searches of the Department of Environment and Heritage Protection's (EHP) Environmental Management Register (EMR) and Contaminated Land Register (CLR), limited inspections of the EIS study area and interviews with landholders between 2006 and 2011. In addition information was obtained from the non-Indigenous cultural heritage (NICH) study (**Section 16.2** of the Red Hill Mining Lease EIS) and the BMA contaminated land register, which provides information on potentially contaminating activities within the current mining operations.

A review of the available geological information indicated the geology of the site consists of Tertiary/Quaternary aged alluvial, colluvial and older residual soils. These soils are underlain by the Tertiary Suttor Creek Formation and Permian Rangal, Fort Cooper, Moranbah and Back Creek Coal Measures.

The occurrence of aquifers is dependent on the spatial distribution of geologic units in the area. The shallow aquifer is ephemeral in nature and discontinuous. Groundwater supply is not considered to be a major water source and is of low beneficial use due to low sustainable yields and poor quality.

The land use for the parcels associated with the EIS study area is mining, exploration leases or grazing. A review of the current and historical aerial photographs (to 1966) indicate that the EIS study area consisted of cattle grazing grasslands until the development of the Riverside (1971), Goonyella (1982) and Broadmeadow (2005) mines. In addition, the NICH section of the Red Hill Mining Lease EIS (**Section 16.2**) notes additional localised development in some areas within the EIS study area.

Fourteen of the 27 Lots searched in the EHP registers are listed on the EMR. Nine of these Lots are a result of subdivision of a Lot that was previously listed on the EMR. The Lots are listed for notifiable activities including: chemical storage, mine wastes, landfill, oil or petroleum storage, abrasive blasting or livestock dip/spray race. Note that no searches were undertaken for Lots within the current mining operations, as this information is recorded and maintained by BMA.

Inspections of the EIS study area were undertaken in 2006 (Riverside Homestead area), 2009 (inspection of accessible areas of the exploration leases) and 2011 (inspection of additional EIS study area inclusions). These inspections identified a livestock dip and associated stockyards, and fuel and oil storage at the Riverside Homestead. Additionally, a second livestock dip was located near the Broadmeadow Homestead, which also housed minor fuel and oil storage. Waste disposal areas associated with the Homesteads were also identified, presenting potential for soil and groundwater contamination. Secondary areas of concern include unidentified soil/material stockpiles, portable fuel associated with mobile plant, the Star Crushing area, as well as minimal fuel storage and waste stockpiling at Broadmeadow Cottage 1. Finally, the NICH study identified one additional minor waste disposal area in the north east of the EIS study area.

URS concludes that the present development plan does not indicate direct disturbance to any of these areas of potential concern; however, some sites (Site 1 Riverside Homestead and Site 10 Riverside minor waste dump area) may be disturbed by installation of incidental mine gas management



## Executive Summary

infrastructure and subsequent subsidence. Further investigation of both sites is recommended to determine whether contaminants are present at levels exceeding National Environmental Protection Measures (NEPC 2013). A protocol for investigation of these areas adhering to the guidelines (EHP 2012) will be developed, prior to disturbance of potentially contaminated land.

In addition, construction of infrastructure (including a mine industrial area (MIA) and coal handling and preparation plant (CHPP)) are likely to take place on land that is listed on the EMR. Assessment of potential excess spoil generated that is required to be removed from that lot and plan may be required. If contaminated, the soil will need to be appropriately managed onsite or disposed of to an appropriately authorised waste management or disposal facility in accordance with soil disposal procedures specified in the *Environmental Protection Act 1994* (EP Act) and associated regulations.

It is possible that unknown/unidentified contamination may be encountered during the course of the construction works. A procedure will be developed identifying and managing potential contaminated soils.

At present, the livestock dips located within the Broadmeadow and Riverside Homesteads have not been formally identified to EHP. It is a requirement of the EP Act that these lots be identified to EHP once the owners become aware of a notifiable activity taking place on their land. Therefore, it is suggested that Lot 18 on SP208194 be added onto the EMR for the notifiable activity 21 - Livestock Dip or Spray Race. In addition, the current mining operations contaminated sites register should be updated/maintained regularly.



## Introduction

### 1.1 General

The Red Hill Mining Lease is located adjacent to the existing Goonyella, Riverside and Broadmeadow (GRB) mine complex in the Bowen Basin, approximately 20 kilometres north of Moranbah and 135 kilometres south-west of Mackay, Queensland (refer **Figure 1**).

BHP Billiton Mitsubishi Alliance (BMA), through its joint venture manager, BM Alliance Coal Operations Pty Ltd, proposes to convert the existing Red Hill Mining Lease Application (MLA 70421) to enable the continuation of existing mining operations associated with the GRB mine complex. Specifically, the mining lease conversion will allow for:

- An extension of three longwall panels (14, 15 and 16) of the existing Broadmeadow underground mine (BRM).
- A future incremental expansion option of the existing Goonyella Riverside Mine (GRM).
- A future Red Hill Mine (RHM) underground expansion option located to the east of the GRM.

The three project elements described above are collectively referred to as ‘the project’.

In addition to the proposed underground mine, the project will include the construction and operation of a new coal handling and preparation plant (CHPP) (called the Red Hill CHPP), a mine industrial area (MIA) and associated infrastructure to accommodate the required handling and processing of the additional coal production.

As part of the project Environmental Impact Statement (EIS), URS Australia Pty Ltd (URS) was appointed by BMA to undertake a Preliminary Site Investigation (PSI) to evaluate the potential for contaminated land within the EIS study area.

The mine currently operates on the following mining tenures, the majority of which are located on a mixture of freehold land and state land:

- mining lease (ML) 1763;
- ML1764;
- ML1802;
- ML1900;
- ML70038;
- ML70121;
- ML70193;
- ML70194;
- ML70287;
- ML70288; and
- ML70289.

Additional mining tenures within the EIS study area include:

- mining lease application (MLA)70421;
- exploration permit coal (EPC) 953;
- EPC554;
- EPC1279;
- EPC928;
- mineral development licence (MDL)307; and
- MDL358.

The locations of the mining tenements, exploration areas and land tenures are presented in **Figure 2**.

## 1 Introduction

### 1.2 Objectives

The objective of this PSI is to examine and identify potential contaminated land risks resulting from current and/or past practices within the EIS study area which have a potential impact on the environment of the EIS study area and which may be a liability, in accordance with the Department of Environment and Heritage Protection (EHP) *Guideline for contaminated land professionals* (2012).

### 1.3 Scope of Works

The scope of work undertaken by URS as part of the environmental assessment of the site include the following:

- the review of historical data, including a review of aerial photographs, historical certificates of title search, and interviews;
- a review of all relevant geological, hydrogeological and topographical maps and databases to examine the physical setting of the EIS study area;
- a site inspection to update existing information collected during previous site inspections in 2006 and 2009, as well as to examine the current environmental setting of the EIS study area, observe current activities and identify surrounding land uses;
- the preparation of a PSI report detailing the investigations undertaken; and
- revision to this report in October 2013 to update revised lot and plans.

More detail on land contamination issues arising from mineral waste and additional processing facilities have been discussed in **Section 6** and **Section 15** respectively, of the Red Hill Mining Lease EIS.

## Site Information

### 2.1 Site Locality

The proposed project site currently consists of grazing and coal mining activities. Grazing activity occurs to the north, east, and south of the EIS study area. There are no National Parks, State Forests or Nature Reserves within or near the EIS study area.

### 2.2 Title Information

Title information indicates that the EIS study area currently consists of 51 lots within the Isaac Regional Council (IRC). Copies of the current and historical Certificates of Title are included in **Appendix A**. These include lots assigned for infrastructure (roadways and railways) as well as areas already held by BMA, and lots still held by local landowners. The project has been separated into the eastern area (to the east of current mining operations), the central area (consisting of current mining operations) and the western area (to the west of the current mining operations). An overview of the current and historical title information is included in **Appendix A**.

### 2.3 Zoning Information

The project is located within the Parishes of Goonyella (north), Platypus (south), Wallanbah (south-east) in the County of Grosvenor. The project lies within the amalgamated IRC, which incorporated the former Belyando, Broadsound and Nebo local governments on the 15 March 2008. Prior to the amalgamation, the project was within the Belyando Shire Council. The RHM is zoned for 'rural use' under the *Planning Scheme for Belyando Shire*.

### 2.4 Site Use

#### 2.4.1 Current Use

The project can be broadly divided into three main divisions:

- pastoral/grazing leases, including Riverside Homestead, Broadmeadow Homestead, adjacent Lapunyah Homestead and associate cottages;
- current mining activities including GRB mine complex; and
- easements for gas and water pipelines, power lines and transport infrastructure.

**Figure 2** shows the layout of the project and the associated land parcels. **Figure 3** shows the mining and exploration leases held over the EIS study area.

Land outside the area of the present mining activities is currently used for cattle grazing. Exploration is underway in MLA70421 and EPC554. Additionally, buildings and structures are located at the Riverside and Broadmeadow Homesteads.

#### 2.4.2 Proposed Use

The proposed project will include the following:

- The extension of BRM longwall panels 14, 15, and 16 into MLA70421. Key elements include:
  - No new mining infrastructure is proposed other than infrastructure required for drainage of incidental mine gas (IMG) to enable safe and efficient mining.

## 2 Site Information

- Management of waste and water produced from drainage of IMG will be integrated with the existing BRM waste and water management systems.
- The mining of the BRM panel extensions is to sustain existing production rates of the BRM mine and will extend the life of mine by approximately one year.
- The existing BRM workforce will complete all work associated with the extensions.
- The incremental expansion of the GRM including:
  - underground mining associated with the RHM underground expansion option to target the Goonyella Middle Seam (GMS) on mine lease (ML) 1763;
  - a new MIA;
  - a CHPP adjacent to the Riverside MIA on MLA1764 and ML1900 – the Red Hill CHPP will consist of up to three 1,200 tonne per hour modules;
  - construction of a drift for mine access;
  - a conveyor system linking RHM to the Red Hill CHPP;
  - associated coal handling infrastructure and stockpiles;
  - a new conveyor linking product coal stockpiles to a new rail load-out facility located on ML1900; and
  - means for providing flood protection to the mine access and MIA, potentially requiring a levee along the west bank of the Isaac River.
- A potential new Red Hill underground mine expansion option to the east of the GRB mine complex, to target the GMS on MLA70421. The proposed mine layout consists of:
  - a main drive extending approximately west to east with longwall panels ranging to the north and south;
  - a network of bores and associated surface infrastructure over the underground mine footprint for mine gas pre-drainage (IMG) and management of goaf methane drainage to enable the safe extraction of coal;
  - a ventilation system for the underground workings;
  - a bridge across the Isaac River for all-weather access. This will be located above the main headings, and will also provide a crossing point for other mine related infrastructure including water pipelines and power supply;
  - a new accommodation village (Red Hill accommodation village) for the up to 100% remote construction and operational workforces with capacity for up to 3,000 workers; and
  - potential production capacity of 14 million tonnes per annum of high quality hard coking coal over a life of 20 to 25 years.

## Environmental Setting

### 3.1 Regional Geology and Hydrogeology

The project is located on the western margin of the Bowen Basin, which forms part of the New England Fold Belt in eastern Australia. The Geological Survey of Queensland 1:100,000 Harrybrandt and Wyena (Sheets 8554 and 8454 respectively) were studied. The EIS study area is comprised of Tertiary-Quaternary aged alluvial, colluvial and older residual soils. These soils are underlain by the Tertiary aged Suttor Creek Formation (comprising fluvial and lacustrine sediments and basalt flows) and the Permian aged Rangal, FortCooper, Moranbah and Back Creek Group Coal Measures. These coal measures consist of cyclical sequences of sandstones, conglomerates, mudstones and economic coal seams. In the EIS study area, the stratigraphy generally dips to the east.

The hydrogeology of the region is recorded on the Groundwater Resources of Queensland 1:2,500,000 map, which indicates that groundwater beneath the EIS study area is marginally brackish (between 500 and 1,500 mg/L total dissolved solids (TDS)) and is thought to be suitable for most purposes, although marginal for human consumption and low salt tolerant crops. In addition, the groundwater within the EIS study area (**Section 8** of the Red Hill Mining Lease EIS) is generally divided into:

- Quaternary Alluvial and Tertiary Sediment Aquifers – which are generally limited in extent and do not form a continuous interconnected aquifer. The quaternary aquifer is generally freshwater, while the Tertiary aquifer is generally of poorer quality.
- Tertiary Basalt Aquifers – which are discontinuous and in the south, west and a larger area to the north of the EIS study area and are generally brackish.
- Permian Triassic Aquifers – which consist of coal seam aquifers of which most have been removed in the majority of the western extent of the EIS study area through open cut mining and are generally brackish to saline.

### 3.2 Groundwater Database

A search was undertaken for registered groundwater users located within a 5 km radius of the EIS study area. This was conducted using the Groundwater and Licensing Database maintained by the EHP. The search results indicate that 30 registered artesian and subartesian groundwater bores are located within the area. Seven of these bores are classified as abandoned and destroyed. A full discussion of these registered bores is included in **Section 8** of the Red Hill Mining Lease EIS.

Historically, stock water and domestic bores did not require licensing, and so the database may not list all bores within 5 km of the project. The landowner of Riverside and Broadmeadow Homesteads was interviewed to ascertain whether any bores exist on his property that are not listed on the EHP database, and the extent to which the property uses and relies on groundwater.

The owner provided the following information during the interview:

- Historically, there has been one bore on the Riverside property, located near the gas pipeline. It was used frequently in the past, and is currently unused. It is understood to be unregistered.
- The property utilises surface water from dams to maintain stock supplies.
- Windmills are located near dams to pump water from the dams to troughs in paddocks.

## 3 Environmental Setting

### 3.3 Surface Water

The EIS study area is located mainly in the Goonyella Creek catchment which is a tributary of the Isaac River within the Fitzroy River Basin. Several tributaries, including, Eureka Creek, Fisher Creek, Platypus Creek and 12 Mile Gully, are also located within the EIS study area. The developments of the GRM and BRM have altered the drainage pattern across the EIS study area. The Isaac River and tributaries, including Eureka Creek, Platypus Creek and Fisher Creek, have been permanently altered to divert surface water flow around mine related disturbed areas and to control flooding risks. Numerous rural and mining operations related dams were located within the EIS study area. Several rural dams were inspected and appeared to be made from local materials and a windmill was usually present to pump the water to a tank, which is then fed to watering troughs for stock. In a few cases, a small engine powered pump and a single jerry can of fuel was located near the dam to assist with water movement. Further discussion is included in **Section 7** of the Red Hill Mining Lease EIS.

### 3.4 Topography

The existing approved mining areas and the project exhibit topographical features consistent with the regional landscape of the Bowen Basin. The topography is dominated by flat to gently sloping landforms and rolling hills. The undisturbed sections are generally flat or gently sloping towards the creeks. The land has been partially cleared in areas to increase grazing availability. Further discussion on topography is included in **Section 5.3** of the Red Hill Mining Lease EIS.

### 3.5 Neighbouring Land Use

The project and adjoining areas are currently and have historically been used for cattle grazing, extractive industries (coal mining) and commercial activities. Grazing occurs to the east and west of the site on partially cleared land grass pastures. Coal mining is undertaken to the north and south of the project; with North Goonyella underground and open cut mine (Eaglefield Pit) to the north and the Moranbah North underground mine to the south. There are a number of occupied homesteads within the EIS study area (Broadmeadow and Riverside Homesteads and associated infrastructure). Additionally, Red Hill and Burton Homesteads are located to the north-east and Lapunyah Homestead is located to the north-west.



## Review of Historical Information

### 4.1 Site History

#### 4.1.1 Certificates of Title

A search of the current and historical titles of the land parcels included in the mining tenements was undertaken through EHP. The Crown had initial ownership of the project land, with land either unallocated state land or leased under the Pastoral Lease system. An overview of the ownership information is as follows:

- 24 lots and plans are owned by the State government for infrastructure titles and other purposes;
- 5 lots are owned by private landholders;
- 20 lots are owned by company/consortiums; and
- 2 lots are held by the Australian Communications Commission or the Queensland Electricity Commission.

Relevant current and historical title and ownership information and certificates of title are presented in **Appendix A**. Note that not all infrastructure titles are illustrated on **Figure 2**.

#### 4.1.2 Aerial Photographs

An historical aerial photography survey was undertaken. Aerial photographs from 1966 to 2005 were reviewed to assist in the interpretation of the site history. Client supplied photographs for the project in 2009 were also studied.

The following aerial photographs were reviewed to assist in the interpretation of the site history.


- **1966** – Q1702 Platypus Creek – Run 1 – Frames 35, 37, 39 – Run 2 – Frames 17, 19 - Scale unknown;
- **1975** – Q3052 Wyena – Run 6 – Frames 10, 42 – Scale 1:40,000;
- **1975** – Q2969 Wyena – Run 5 – Frames 116, 118 – Run 7 – Frames 172, 174 – Run 8 – Frames 218, 220, 222 - Scale 1:40,000;
- **1979** - Q3070, Run 7 - Frame 359; Run 6 – frame 369; Run 8 – Frame 297-301; Run 10 Frame 240-243 - Scale 1:40,000;
- **1985** – Q4476 - Run8E – Frames 10-12 - Scale 1:40,000;
- **1985** – Q4389 - Run 9 – Frames 222-228; Run 10 – Frames - 117-119 - Scale 1:40,000;
- **1985** – Q4390 - Run 7 – Frames 46- 48 - Scale 1:40,000;
- **1987** – Q4596 - Run 6 – Frame 24 – Scale 1:40,000;
- **1987** – Q4593 - Run 8 – Frames 202-206; Run 10 – Frames 139; Run 9 – Frame 150 - Scale 1:40,000;
- **2000** - QAP5843 - Run 3 Frame 186; Run 4 – Frame 31; Run4 – Frames 27-36; Run5 – Frames 35- 34; Run6 – Frames 94-98; Run7 – Frames 102-104 - Scale 1:40,000;
- **2004** – AAMH3436-3c - Run 2 – Frame 023 - Scale 1:40,000;
- **2004** – QAC 6110 - Run 1 – Frame 19 - Scale 1:40,000;
- **2005** – AAMH 3102 1c - Run 1 – Frame 027 - Scale 1:40,000;
- **2005** – AAMH3155 2c - Run 1 Frame 1064-1071a and 1064 – 1071b - Scale 1:40,000;
- **2009** – Client Supplied Aerial Photograph.

The findings of the aerial photographs are summarised below, and aerial photographs themselves are presented below.

#### 4 Review of Historical Information

Note that the appropriate project boundary has been outlined in red within the aerial photographs. Further, some of the descriptions in **Table 4-1** have been taken from previous investigations. The original aerial photography could not be obtained from EHP and therefore is not included in **Table 4-1**.

**Table 4-1 Historical Aerial Photography Review**

Year	Western Exploration Area	Central (Mining Area)	Eastern Exploration Area
1966			
	<p>Mostly undeveloped with some small cleared areas, several tracks and some small dams.</p>	<p>No indications of Goonyella mine are evident. Some cleared areas either side of Isaac River. Homestead/Infrastructure visible where the current Broadmeadow underground Administration is located.</p>	<p>Mostly undeveloped with some small cleared areas and several tracks.</p>

## 4 Review of Historical Information

Year	Western Exploration Area	Central (Mining Area)	Eastern Exploration Area
1975 - 1979			
	<p>Remains undeveloped with natural vegetation cover with minimal clearings. Small dams and several tracks are visible, including some rail infrastructure.</p>	<p>GRM visible, narrow with cleared areas, unsealed tracks, dams and a railway to the south. Infrastructure visible where current Broadmeadow's underground administration is located. Buildings are now visible at present day Broadmeadow Homestead, Land surrounding the Homestead has been cleared and additional access tracks and rail infrastructure are visible.</p>	<p>Remains undeveloped with natural vegetation cover with minimal clearings. Several tracks are visible. Cleared vegetation and unsealed tracks are visible to the west of the Isaac River. Infrastructure and cleared land, associated with Riverside Homestead is also visible.</p>

### 4 Review of Historical Information

Year	Western Exploration Area	Central (Mining Area)	Eastern Exploration Area
1985 - 1987			
	<p>Remains undeveloped with natural vegetation cover. One power line easement and the rail loop are visible to the western edge of EIS study area. Addition of several small dams.</p>	<p>The unsealed roadways and mine are more prominent. Additional cleared land surrounding the mine. Broadmeadow Homestead has been developed further. An AST farm is now visible at Broadmeadow Homestead. Stockyard east of the homestead visible. Southern areas of railway visible. Isaac River diversion channel is visible.</p>	<p>Increase in cleared vegetation and number of unsealed tracks to the west of the Isaac River. Remainder of land remains undeveloped with extensive natural vegetation. Little change to infrastructure at Riverside Homestead.</p>

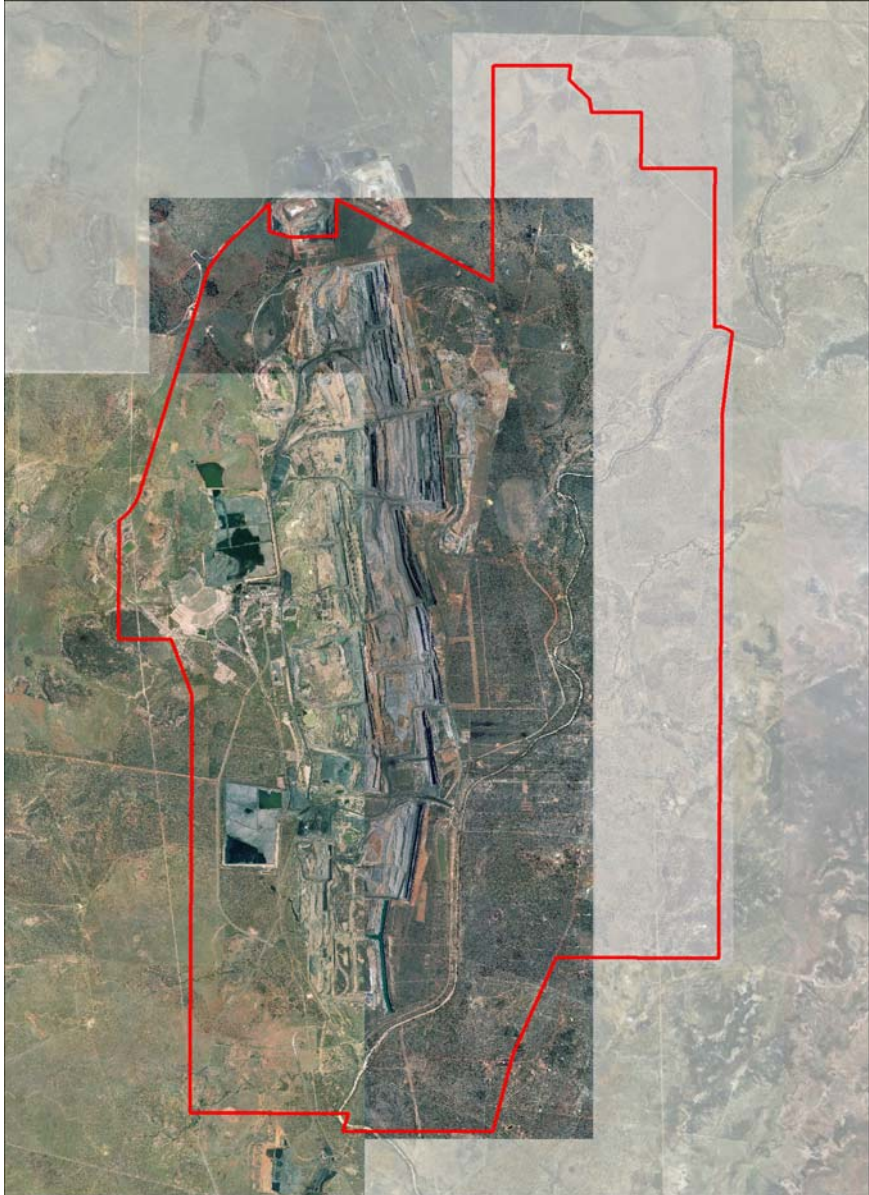
### 4 Review of Historical Information

Year	Western Exploration Area	Central (Mining Area)	Eastern Exploration Area
2000			
	<p>Remains undeveloped with a noticeable decrease in natural vegetation. Stockyard with musterers hut visible.</p>	<p>GRB mine complex has extended further to the north, and the unsealed tracks/roads are more pronounced spatial extent. The infrastructure of Broadmeadow Homestead appears to remain unchanged. Broadmeadow Cottages 1 and 2 are now visible. Eungella water pipeline easement visible.</p>	<p>Increase in cleared vegetation and unsealed tracks/roads. Remainder of land remains undeveloped with extensive natural vegetation.</p>

### 4 Review of Historical Information

Year	Western Exploration Area	Central (Mining Area)	Eastern Exploration Area
2005			
	<p>Little additional development has taken place.</p>	<p>Additional cleared land surrounding Broadmeadow Homestead and Cottages 1 and 2. The paddock north west of the Homestead appears to be a lay down area or disused equipment.</p>	<p>Increase in unsealed tracks. Remainder of land remains relatively undeveloped with some cleared areas potentially associated with BRM infrastructure.</p>

## 4 Review of Historical Information

Year	Western Exploration Area	Central (Mining Area)	Eastern Exploration Area
2009			
	<p>Remains undeveloped, with many unsealed tracks. Lapunyah Homestead and Eungella pipeline storage dams visible.</p>	<p>Mine infrastructure takes up most of central area.</p>	<p>Increase in unsealed tracks. Remainder of land remains relatively undeveloped with some cleared areas, possibly for exploration drilling.</p>

## 4 Review of Historical Information

### 4.2 EHP Priority Sites Register

A search of EHP's Environmental Management Register (EMR) and the Contaminated Land Register (CLR) was undertaken for the lots outside of the current mining operations, within the EIS study area.

Searches did not include the parcels of land where the use of the land is noted as infrastructure title, as these refer to roadways and railways, and form a relatively small part of the EIS study area.

The results of the register search indicate that 14 of the 27 lots searched are listed on the EMR. Of these, six are resultant from subdivision of a Lot that was previously listed on the EMR. The results of the searches are presented in **Appendix B**. Additionally, information of the current contaminated sites register for the current mining operations is maintained by BMA and more information can be found in **Appendix C**.

The following notifiable activities as defined in Schedule 2 of the *Environmental Protection Act 1994* (EP Act) are listed as occurring within the EIS study area:

- 1. abrasive blasting – carrying out abrasive blast cleaning (other than cleaning carried out in fully enclosed booths) or disposing of abrasive blasting material;
- 7. chemical storage – (other than petroleum products or oil under item 29)-storing more than 10 t of chemicals (other than compressed or liquefied gases) that are dangerous goods under the dangerous goods code;
- 20. landfill – disposing of waste (excluding inert construction and demolition waste);
- 22. livestock dip or spray race – operating a livestock dip or spray race facility;
- 24. mine wastes –
  - (a) storing hazardous mine or exploration wastes, including, for example, tailings dams, overburden or waste rock dumps containing hazardous contaminants; or
  - (b) exploring for, or mining or processing, minerals in a way that exposes faces, or releases groundwater, containing hazardous contaminants.
- 29. petroleum product or oil storage storing petroleum products or oil-
  - (a) in underground tanks with more than 200 L capacity; or

In above ground tanks with:

- i. for petroleum products or oil in class 3 in packaging groups 1 and 2 of the dangerous goods code-more than 2,500 L capacity; or
- ii. for petroleum products or oil in class 3 in packaging groups 3 of the dangerous goods code-more than 5,000 L capacity; or
- iii. for petroleum products that are combustible liquids in class C1 or C2 in Australian Standard AS 1940, *The storage and handling of flammable and combustible liquids* published by Standards Australia-more than 25,000 L capacity.

**Table 4–2** summarises the Priority Sites Register results and **Figure 3** illustrates the land parcels listed on the EMR.



## 4 Review of Historical Information

**Table 4-2 EHP Priority Sites Register**

Lot No.	Plan	EMR	CLR	Comments / Notifiable Activities
1	CP907955	No	No	
1	RP858201	No	No	
1	RP904445	No	No	
2	CP852534	-	-	No searches carried out – State Infrastructure Title
2	CP907954	Yes	No	Included on EMR for: 1. Abrasive Blasting 7. Chemical Storage 24. Mine Wastes 29. Petroleum Product or Oil Storage
2	GV69	-	-	No searches carried out – State Infrastructure Title
2	GV70	-	-	No searches carried out – State Infrastructure Title
2	GV96	-	-	No searches carried out – State Infrastructure Title
2	RP617822	No	No	
2	RP858201	-	-	No searches carried out – State Infrastructure Title
2	SP129982	-	-	No searches carried out – State Infrastructure Title
2	SP138791	Yes	No	Included on EMR for 24. Mine Wastes
3	CP907954	No	No	
3	GV54	No	No	
3	GV71	-	-	No searches carried out – State Infrastructure Title
3	RP852526	Yes	No	Included on EMR for 24. Mine Wastes
3	RP858201	-	-	No searches carried out – State Infrastructure Title
3	SP199176	Yes	No	Subdivided from Lot 1 GV334 which is included on EMR for: 22. Livestock Dip or Spray Race Operations 24. Mine Wastes 29. Petroleum Product or Oil Storage
4	CP907954	-	-	No searches carried out – State Infrastructure Title
4	GV174	No	No	
4	RP617820	No	No	
4	RP852526	-	-	No searches carried out – State Infrastructure Title
4	SP174465	No	No	
5	RP852533	Yes	No	Included on EMR for: 20. Landfill 24. Mine Wastes. 29. Petroleum Product or Oil Storage
6	GV46	-	-	No searches carried out – Unallocated State Land
7	GV46	-	-	No searches carried out – Unallocated State Land
7	URSL37429	-	-	No searches carried out – Unallocated State Land
8	GV47	-	-	No searches carried out – State Infrastructure Title
8	USL37428	-	-	No searches carried out – Unallocated State Land
8	USL37429	-	-	No searches carried out – Unallocated State Land
9	GV126	No	No	

## 4 Review of Historical Information

Lot No.	Plan	EMR	CLR	Comments / Notifiable Activities
9	USL37428			No searches carried out – Unallocated State Land
10	SP235299	Yes	No	Subdivided from Lot10 GV52 which is included on the EMR for: 20. Landfill 24. Mine Wastes
10	SP235905	No	No	
10	USL37429	-	-	No searches carried out – Unallocated State Land
11	USL39191	-	-	No searches carried out – Unallocated State Land
12	GV213	No	No	
12	USL39191	-	-	No searches carried out – Unallocated State Land
13	USL39191	-	-	No searches carried out – Unallocated State Land
14	CP846391	Yes	No	Included on EMR for 20.Landfill
15	USL39191	-	-	No searches carried out – Unallocated State Land
16	GV313	No	No	
16	SP235299	Yes	No	Subdivided from Lot16 SP230330 which is included on the EMR for 24.Mine Wastes
18	GV95	-	-	No searches carried out – State Infrastructure Title
18	SP208194	Yes	No	Subdivided from Lot1 CP907954 which is included on EMR for 29. Petroleum Product or Oil Storage
19	SP156188	Yes	No	Subdivided from Lot 1 CP907954 which is included on EMR for 29. Petroleum Product or Oil Storage.
20	SP129981	-	-	No searches carried out – State Infrastructure Title
20	SP235298	Yes	No	Subdivided from Lot 1 CP907954 which is included on EMR for 29. Petroleum Product or Oil Storage.
41	SP235904	Yes	No	Subdivided from Lot1 GV334 which is included on EMR for 24.Mine Wastes
172	SP237593	Yes	No	Subdivided from Lot6 RP619487 which is included on EMR for 29. Petroleum Product or Oil Storage.
200	SP259127	Yes	No	Land parcel is an amalgamation of following sites Lot 13 GV312 and Lot 11 GV297 which were historically on EMR for 29. Petroleum Product or Oil Storage

\* Subdivided new parcels will remain on the EMR unless it can be proven that these parcels were not affected by the notifiable activity.

### 4.3 Isaac Regional Council Licence Searches

The IRC was contacted to determine whether information was publicly available with regard to Trade Waste License Applications and Flammable Liquid Licenses. IRC indicated that due to the rural nature of the lots within the project, it is unlikely a large enough amount of liquids/waste would be stored to trigger licencing regulations. Additionally, the IRC stated that it would only be able to provide information on lots that fall outside (mine related) ML, MLA and MDL, as these are administered by EHP. These rendered the search unnecessary, as all lots within the project fall under an ML, MLA or MDL.

## Site Visit

### 5.1 Site Inspection and Interviews

Between 6 and 10 March 2009, and between 30 and 31 May 2011, URS conducted a site reconnaissance of the EIS study area outside of the currently operating mining leases. BMA maintains a current contaminated sites register for sites within the mining operations (**Appendix C**). This site visit comprised a general site inspection where access permitted, and visits to a number of locations of interest identified during the aerial photography interpretation study and an interview with the owner of Riverside and Broadmeadow Homesteads on 8 May 2009.

Locations of interest identified during the 2009 site visit and interview were:

- Riverside Homestead including:
  - stock yard (and disused stock dip) near the Homestead;
  - general waste rubbish pits backing onto Isaac River south of Homestead;
  - above ground fuel storage tanks;
  - western stock yard area; and
  - stock yard area in western exploration area.
- Broadmeadow Homestead including:
  - stock yard;
  - general waste areas in field to north-west of the Homestead;
  - Broadmeadow Cottage 1;
  - Broadmeadow Cottage 2;
  - Broadmeadow stock yard; and
  - stock yards and dip in this area.
- Star crushing/quarrying area.

The location of interest identified during the 2011 site visit and interview was the potential stockyard located on north-eastern boundary of EIS study area.

### 5.2 Topography / Site Features

Generally, the EIS study area is flat to undulating with areas cleared for grazing. Several shallow creeks and drainage channels exist across the project. Easements have been cleared in the east for power and gas corridors. In the west, easements have been cleared for the Eungella water pipeline, power lines and a second gas pipeline.

The north-eastern area is characterised by some parts cleared vegetation and parts cleared access tracks (mostly following fences or leading to stock watering areas). Further to the south (east of the BRM) the terrain is characterised by numerous cleared tracks and drill hole pads (see **Plate B-36**). The north-western area remained relatively undeveloped with some cleared tracks, mostly following fences and leading to stock watering areas and the western stockyard area. In the south, the terrain is mostly uncleared with some access tracks.

### 5.3 Buildings

During the site visit, buildings were identified at the Riverside Homestead and the Broadmeadow Homestead (including Broadmeadow Cottages 1 and 2). Additionally, a disused musterer's cottage exists near the western stockyard. These are discussed below.

## 6 Site Visit

### 5.4 Primary Areas of Concern

The main areas of concern include the two Homesteads located within the project footprint.

#### 5.4.1 Site 1 – Riverside Homestead

The Riverside Homestead is located in the eastern exploration area (Site 1 on **Figure 4**). It consists of the main house, a cottage backing onto the Isaac River, horse stables, a stock yard (including a stock dip), as well as several large sheds used mostly for vehicle storage, vehicle maintenance and stock feed storage. The Homestead utilises a septic tank system, which may be a potential source of contamination.

##### *Stockyard and Stock Dip*

The stockyards are located to the west of the Riverside Homestead. The area comprises several stockyards (with cattle and horses at time of site visit), two stock crushes, and one stock dip. Anecdotal information suggests that the dip has not been used by the current owner for over 25 years. **Plates B-1** through **B-3** demonstrate that the dip is constructed of concrete and appears in fair condition.

##### *Fuel and Oil Storage*

During the site inspection it was noted the Riverside Homestead had several areas of fuel storage located near the stockyards and sheds. These included above ground storage tanks (ASTs), portable storage facilities (in varying sizes and degrees of disrepair) and 205 L fuel and oil drums.

An additional AST had been on the property since the 2006 site visit. The ASTs appeared in fair condition, with some visible rust (**Plates B-4** to **B-6**). Minimal areas of staining were visible beneath the tanks.

Five portable fuel storage trailers were recorded on the property during the 2009 inspection. These include two that appeared to be in use, and three that appeared to be disused (**Plates B-7** to **B-9**). One trailer (see **Plate B-6**) located near the ASTs in 2006, was not present at the time of the site inspection in 2009.

Fuel and oil was identified, with 205 L drums located on a concrete slab in one of the vehicle storage sheds. **Plate B-10** shows approximately 25 drums of unleaded petrol, diesel and some motor oil stored on a concrete slab. In 2006 several drums of Avgas100 were also present onsite (**Plate B-11**). This was confirmed in 2009 with the landholder stating that this was used from time to time for helicopter mustering.

##### *Waste Disposal*

Waste disposal from Riverside Homestead is managed privately by the property owner. The private waste disposal area is located south of the Homestead. Generally, the rubbish pits contained household waste (including bags of rubbish, old appliances and broken chairs). The second gully contained more rural and metallic items including strands of old barbed wire and posts. In the same area was evidence of dismantled water tanks and other fence posts.

The owner was asked whether dead livestock had previously been buried in any area of the property. It was indicated that the dead livestock was usually burned in an area close to the rubbish pits.

## 6 Site Visit

### *Chemical Storage*

The interview with the Riverside Homestead owner detailed that small volumes of Roundup Weedkiller (active ingredient: glyphosate isopropylamine salt) and Brush-Off (Active ingredient Metsulfuron methyl), used for treating parthenium weed are stored onsite (within the sheds).

### *Waste Oil Storage*

Waste oil storage appears to be confined to one area near a vehicle storage shed, as illustrated in **Plate B-12**, and had changed location since the 2006 inspection (**Plate B-13**). Two 205 L tanks were located adjacent to a storage shed. It is understood that the waste oil tanks are routinely removed for disposal off site when full.

### *Redundant Farm Equipment*

In the field to the south of the house, large numbers of redundant farm equipment, including truck parts, were recorded, as shown in **Plates B-14** and **B-15**. This area was only viewed from a distance, as permission had not been gained from the owner to access the site, and no close up photographs could be obtained.

## 5.4.2 Site 2 – Broadmeadow Homestead

A site visit was made to Broadmeadow Homestead on 10 May 2009. Access to the Homestead was from the Red Hill Road (see Site 2 on **Figure 4**). The Homestead consists of a main house with two small annexes (thought to be a garden shed and a laundry), a small cottage, a row of portable sheds (dongers), a stockyard and five permanent sheds. To the rear of the sheds were two tanks, which appear to be for water storage. The Homestead was under lease to mine contractors at the time of the inspection, at which time no tenants were present, so no interviews were held. A small number of gas cylinders were identified near the living quarters. It is understood that the Broadmeadow Homestead utilises septic tanks for wastewater. Generally, the Homestead area was reasonably tidy, with fuel and oil storage in several areas, though these did not appear to be within bunded areas (i.e. within secondary containment).

### *Stockyard*

The stockyard is located north of the main house and consists of several yards and one livestock crush. As can be noted in **Plate B-16** and **Plate B-17**, these appear to be unused.

### *Fuel and Oil Storage*

The vehicle storage sheds are used to store fuel and oil. At time of inspection, the sheds contained two plastic portable fuel tanks (estimated at 200 L each), as well as several drums of waste oil. These are illustrated in **Plate B-18** through **Plate B-22**. Some of the drums were stored elevated on a pallet; though they were typically stored in contact with the ground.

### *Waste Disposal Area / Redundant Equipment*

Anecdotal evidence suggests that the area behind the stockyard and north of the main house may have been used for mechanical/vehicular storage or waste disposal. At the time of the investigation,

## 6 Site Visit

numerous items (including cable reels) were noted (**Plate B-23**). These were also identified in 2009 aerial photography.

### 5.4.3 Site 3 – Broadmeadow Stock Yard

During the site inspection, an additional stockyard was noted approximately 1 km to the east of the Broadmeadow Homestead (Site 3 on **Figure 4**). The area consists of several holding yards, three crushes and one stock dip.

#### *Stock Yard and Stock Dip*

At the time of inspection, the area consisted of several holding yards and three crushes, as well as a loading ramp. Cattle were grazing near the area; however, the stockyards and runs were overgrown with grass (**Plates B-24 to B-25**).

The concrete stock dip appeared to be in fair condition and was overgrown with grass, suggesting the dip was disused. Three 20 L cans of discarded Barricade S stock dip and spray were noted in the grass nearby (**Plates B-26 to B-27**). This was manufactured by Cyanamid Websters Pty Ltd and active constituents include:

- 25 g/L Cypermethrin
- 138 g/L Chlorfenvinphos
- Solvent: 530 g/L Liquid Hydrocarbon.

## 5.5 Secondary Areas of Concern

### 5.5.1 Site 4 and Site 5 – Broadmeadow Cottages 1 and 2

Visits were made to Broadmeadow Cottages 1 (off Red Hill Road) and 2 (off Goonyella Road) on 10 May 2009. It is understood that these cottages were occupied by mine contractors at the time of the site visit. Gas cylinders were noted near the living quarters. No tenants were present at the time of the visit, and no interviews were carried out. These are referred to as Sites 4 and 5 and the locations are presented on **Figure 4**. Some general waste was noted to the east of Cottage 1, and some old fuel drums were noted close to the house. Additional storage areas were noted to the west of Cottage 1 during the 2011 visit. Cottage 2 was generally neat and tidy, with little evidence of waste or fuel storage. The cottages are illustrated in **Plates B-28 through B-31**.

### 5.5.2 Site 6 – Star Crushing / Quarry

In the north of the EIS study area, a rock crushing area was identified near the power line easement. Its location is shown as Site 6 on **Figure 4**. Due to the heavy equipment working at the site, entry was not gained. The rear of the quarry is shown in **Plate B-32**. The aerial photography suggests that there are several deep excavations within the area and that the quarry was not present in the 1985 aerial photograph; however, it was identified in the 2000 aerial photograph. In addition, potential exists for fuel, oil and chemical storage to have occurred within this complex.

## 6 Site Visit

### 5.5.3 Site 7 and Site 8 – Soil Stockpiles

In the eastern exploration area, to the east of Star Crushing, and beneath the overhead power lines, a small area of soil/material (**Plate B-33**) was noted, marked as Site 7 on **Figure 4**. A second stockpile of soil/material is located in the western exploration area (**Plate B-34**), near the railway line and is marked as Site 8 on **Figure 4**. It is also visible on the most recent aerial photograph. The origin of this material is unknown. Further investigation of this material may be warranted.

### 5.5.4 Site 9 and Site 10 – Red Hill Heritage or Archaeological Sites

In addition, the Non Indigenous Cultural Heritage survey identified two additional minor waste areas (RHHAS-01 and RHHAS-04) located to the north-east and south-west of Riverside homestead respectively. RHHAS-01 (Site 9) was identified as containing household furniture, kitchen items and car bodies and was found in association with an old water tank. RHHAS-04 (Site 10) was identified as containing evidence of general household refuse including iron sheets and fibro (fibre cement sheet). Due to the potential identification of fibro, this is considered an area of potential concern. Additional information can be found in the NICH report.

### 5.5.5 Portable Fuel Storage for Mobile Plant

During the site visit, one 4,200 L Diesel Storage Unit (see **Plate B-35**) was identified, powering a generator located near the pipeline in the eastern exploration area. The tank appeared to be in good condition, with no visible staining in the surrounding area. It is considered that similar fuel storage units are located in other areas of the mining and exploration leases.

## 5.6 Areas of Approved Environmentally Relevant Activities

The GRM Environmental Plan of Operations FY12, as supplied by BMA, has highlighted areas where environmentally relevant activities (ERAs) and notifiable activities exist within the current mining operations.

The plan is in accordance with environmental authority EPML00853413 and details ERAs and notifiable activities which include:

- 3. Asbestos manufacture or disposal;
- 20. Landfill;
- 24. Mine wastes;
- 29. Petroleum product or oil storage;
- 33. Scrap Yards; and/or
- 37. Waste storage, treatment or disposal.

Additionally ERAs within various areas of MLs are detailed which include: chemical storage, metal recovery, sewerage treatment, waste disposal, regulated waste storage, mineral processing, and waste incineration and thermal treatment.

There are two occurrences of notifiable activities in the Broadmeadow ML. These are for the storage of hydrocarbons and a sewerage treatment plant.

There are 45 occurrences of notifiable activities within the Goonyella ML. These are predominantly for the storage of hydrocarbons, oil and waste disposal areas, explosives storage, sewerage lagoons, tailings dams and one decommissioned asbestos landfill.

## 6 Site Visit

There are 25 occurrences of notifiable activities within the Riverside ML. These are typically for storage of hydrocarbons, landfills, tailings dams and sewerage ponds.

Additional information on the ERAs are presented in **Appendix C**.



## Summary and Recommendations

### 6.1 Primary Areas of Concern

Interviews with landholders, interpretation of the historical aerial photographs, and review of title documents have highlighted that there are limited areas of concern relating to historic or ongoing potential contamination sources and activities within the proposed EIS study area. The use of the land for low intensity pastoral activities and the small number of farm buildings, associated septic systems, and consequent limited storage of chemicals, suggest that the area has only a few potential historical contamination sources. The main activities which have the potential to result in groundwater and soil contamination are the stockyard and stock dip areas, fuel and oil storage and general waste disposal areas, however this potential contamination is likely to be localised in areas of stockyard /residential infrastructure. Of a lesser concern are areas of minor chemical storage and redundant farm equipment.

It has been considered that the risk of soil contamination from historical pesticide use outside of dip/stockyard areas is minimal, due to the nature of agricultural practices in the area.

Primary sites of interest identified during the site inspection and desktop study focused within and near the two homestead complexes that lay within the EIS study area, as shown on **Figure 4** and include:

- Site 1 – Riverside Homestead – this homestead has minor chemical, fuel and oil storage, as well as domestic waste disposal areas. A stockyard inclusive of a dip was also identified.
- Site 2 – Broadmeadow Homestead – this homestead has minor chemical, fuel and oil storage, as well as domestic waste disposal areas. Additionally, a stockyard with a pneumatic crush was identified adjacent to the Homestead area.
- Site 3 – Broadmeadow Stockyard - an additional stockyard was noted approximately one kilometre to the east of the Broadmeadow Homestead. The area consisted of several holding yards, three crushes and one stock dip.

### 6.2 Secondary areas of concern

Secondary sites of interest identified during the site inspections and desktop study include:

- Sites 4 and 5 – Broadmeadow Cottages 1 and 2 – some general waste and minor fuel storage was identified;
- Site 6 – Star Crushing/quarry – heavy equipment usage, excavation works and potential fuel and chemical storage;
- Sites 7 and 8 – Soil stockpiles – soil stockpiles of unknown origin;
- Portable fuel storage for mobile plant was also identified in some areas;
- Site 9 (Red Hill Heritage or Archaeological Site (RHHAS)-01) – minor waste dump identified by NICH study (Red Hill Mining Lease EIS **Section 16.2**) containing mostly household and farming debris; and
- Site 10 (RHHAS-04) – minor waste dump identified by NICH study (Red Hill Mining Lease EIS **Section 16.2**) containing mostly household and farming debris.

## 6 Summary and Recommendations

### 6.3 Areas of Approved Environmentally Relevant Activities

A number of areas of concern have been highlighted within the current mining lease, as outlined in the GRM Plan of Operations FY12 provided by BMA. These areas remain outside of the assessment of the PSI. It is suggested that prior to project construction, suitable management strategies be developed if contaminated sites are likely to be disturbed.

### 6.4 Recommendations

URS has reviewed the potential sites of concern across the project and it is concluded that these are unlikely to be impacted by proposed mining activities. The sites of concern are located within the project footprint, but they are not located in areas that will be directly disturbed by future works. One stock dip (Site 3), however, is located within close proximity to the existing rail loop.

Additionally, the sites identified at the Riverside Homestead (Site 1 and Site 10) are within the underground mine footprint and may be affected by installation of incidental mine gas management infrastructure and subsequent subsidence.

Further investigation of both sites is recommended to determine whether contaminants are present at levels exceeding National Environmental Protection Measures (NEPC 2013). A protocol for investigation of these areas adhering to the guidelines (EHP 2012) will be developed, prior to disturbance of potentially contaminated land. This will include, but is not limited to site inspections, and a comprehensive sampling program to identify potential impacts to soils and groundwater. If soil contamination is identified, an appropriate remediation or site management strategy should be implemented (potentially on-site containment or off-site disposal).

Should contaminated soils need to be removed off-site; they will be disposed of in an appropriately authorised waste management or disposal facility in accordance with soil disposal procedures specified in the EP Act and associated regulations.

Regardless of soil contamination levels, wastes, fuel, oil and chemical storage containers and other debris associated with the cattle dip and waste disposal areas should be removed prior to disturbance in these areas.

Construction of the MIA, CHPP and conveyor will take place on lots that are on the EMR. If excess spoil is generated during construction of any of these components, and this spoil is required to be disposed of outside the boundaries of the individual land parcel from which it originated, assessment of the soil may need to be undertaken in order to comply with soil disposal procedures within the EP Act. If contaminated, the soil will need to be appropriately managed onsite or disposed of to an appropriately authorised waste management or disposal facility in accordance with soil disposal procedures specified in the EP Act and associated regulations.

As there is potential for further contaminated soils to be uncovered in the course of construction of the accommodation camp and installation of the incidental mine gas management infrastructure, BMA should develop a procedure for isolating and managing suspected contaminated soils. Workers involved in earthworks, and clearing of vegetation should be familiar with this procedure and be given training on possible signs of contamination.

## Conclusions and Limitations

### 7.1 Conclusions

This report presents a PSI to provide preliminary information on the environmental condition of the EIS study area, and to determine potential land contamination issues within the project footprint.

A review of historical aerial photographs, title documents and government registers showed that the EIS study area has been used for low-intensity pastoral farming for at least the last 50 years, with only a limited number of areas presenting the potential for contamination.

Land uses within the proposed RHM footprint appear generally well run and maintained and only minor potential sources of contamination have been identified over relatively small portions of the EIS study area.

The primary areas of concern identified were:

- fuel storage at Riverside and Broadmeadow Homesteads with the potential to be sources of environmental and health risk;
- stock dips and stock yards at Riverside and Broadmeadow Homesteads, with the potential for soil and groundwater contamination from past use of chemicals; and
- general waste disposal areas at Riverside and Broadmeadow Homesteads.

The secondary areas of concern identified were:

- minor chemical storage at Riverside Homestead;
- redundant farm equipment and machinery;
- Broadmeadow Cottage 1 with some fuel storage in drums and small waste stockpile;
- Star Crushing area;
- unidentified soil stockpiles in eastern and western exploration areas; and
- portable fuel storage associated with mobile plant.

Additionally, the sites identified at the Riverside Homestead (Site 1 and Site 10) are within the underground mine footprint and may be affected both by installation of incidental mine gas management infrastructure and subsequent subsidence. Further investigation of both sites is recommended to determine whether contaminants are present at levels exceeding National Environmental Protection Measures (NEPC 2013). A protocol for investigation of these areas adhering to the guidelines (EHP 2012) will be developed, prior to disturbance of potentially contaminated land. This will include, but is not limited to site inspections, and a comprehensive sampling program to identify potential impacts to soils and groundwater. If soil contamination is identified, an appropriate remediation or site management strategy should be implemented (potentially on-site containment or off-site disposal).

Should contaminated soils need to be removed off-site; they will be disposed of in an appropriately authorised waste management or disposal facility in accordance with soil disposal procedures specified in the EP Act and associated regulations.

Regardless of soil contamination levels, wastes, fuel, oil and chemical storage containers and other debris associated with the cattle dip and waste disposal areas should be removed prior to disturbance in these areas.

Construction of the MIA, CHPP and conveyor will take place on lots that are on the EMR. If excess spoil is generated during construction of any of these components, and this spoil is required to be disposed of outside the boundaries of the individual land parcel from which it originated, assessment

## 7 Conclusions and Limitations

of the soil may need to be undertaken in order to comply with soil disposal procedures within the EP Act. If contaminated, the soil will need to be appropriately managed onsite or disposed of to an appropriately authorised waste management or disposal facility in accordance with soil disposal procedures specified in the EP Act and associated regulations.

As there is potential for further contaminated soils to be uncovered in the course of construction of the accommodation camp and installation of the incidental mine gas management infrastructure, the EIS should contain a procedure for isolating and managing suspected contaminated soils. Workers involved in earthworks, and clearing of vegetation should be familiar with this procedure and be given training on possible signs of contamination.

URS suggests that BMA provides advice to the landowners of Lot 18 SP208194 of the requirements under the EP Act to notify EHP for inclusion on the EMR, (for the notifiable activity 21. Livestock Dip or Spray Race), due to the presence of livestock dips associated with the Riverside and Broadmeadow properties.

## 7 Conclusions and Limitations

### 7.2 Phase 1 Report Limitation Statements

This conclusion and all information in this Report is given strictly in accordance with and subject to the following limitations and recommendations:

- a) The Phase One Environmental Site Assessment undertaken to form this conclusion is limited to the scope of work agreed between URS and BMA as outlined in Section 1.3 ("Scope of Works") of this Report.
- b) Given the limited Scope of Works, URS has only assessed the potential for contamination resulting from past and current known uses of the site.
- c) Inspections undertaken in respect of this Report are limited to visual inspections only and are constrained by the particular site conditions, such as the location of buildings, services and vegetation.
- d) No sampling or laboratory analysis has been undertaken by URS as part of this investigation. URS does not guarantee that contamination does not exist at the site.
- e) Except as otherwise specifically stated in this Report, URS makes no warranty or representation as to the presence or otherwise of asbestos and/or asbestos containing materials ("ACM") on the site. If fill has been imported on to the site at any time, or if any buildings constructed prior to 1970 have been demolished on the site or materials from such buildings disposed of on the site, the site may contain asbestos or ACM.
- f) No investigations have been undertaken into any off-site conditions, or whether any adjoining sites may have been impacted by contamination or other conditions originating from this site.
- g) The conclusion set out above is based solely on the information and findings contained in this Report.
- h) Except as specifically stated above, URS makes no warranty, statement or representation of any kind concerning the suitability of the site for any purpose or the permissibility of any use, development or re-development of the site.
- i) Use, development or re-development of the site for any purpose may require planning and other approvals and, in some cases, environmental regulatory authority and accredited site auditor approvals. URS offers no opinion as to whether the current use has any or all approvals required, is operating in accordance with any approvals, the likelihood of obtaining any approvals, or the conditions and obligations which such approvals may impose, which may include the requirement for additional environmental works.
- j) URS makes no determination or recommendation regarding a decision to provide or not to provide financing with respect to the site.
- k) The ongoing use of the site and/or use of the site for any different purpose may require the owner/user to manage and/or remediate site conditions, such as contamination and other conditions, including but not limited to conditions referred to in this Report.

## References

Belyando Shire 2008, *Planning Scheme for Belyando Shire*, Isaac Regional Council.

*Environmental Protection Act 1994.*

Geological Survey of Queensland (Harrybrandt, Sheet 8554) 1:100,000 Series.

Geological Survey of Queensland (Wyena, Sheet 8454) 1:100,000 Series.

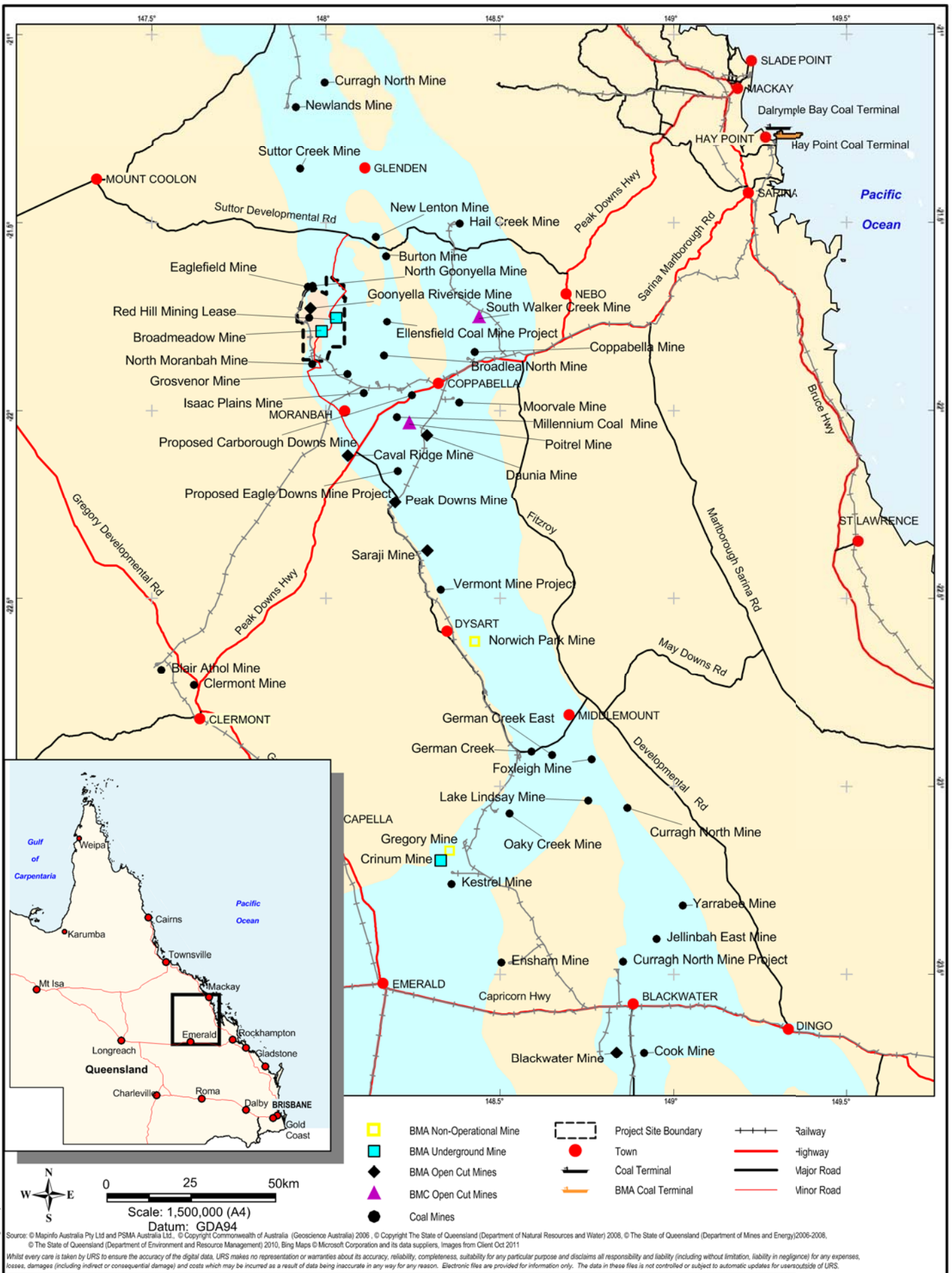
GRM 2011, *Plan of Operations FY12.*

Queensland Department of Mines (1987), *Groundwater Resources of Queensland Map* 1:2,500,000.

Department of Environment and Heritage Protection (2012), *Guidelines for the contaminated land professional.*

NEPC (National Environmental Protection Committee) 2013, National Environment Protection (Assessment of Site Contamination) Measure (2013);, Australian Government, Canberra.

## Figures

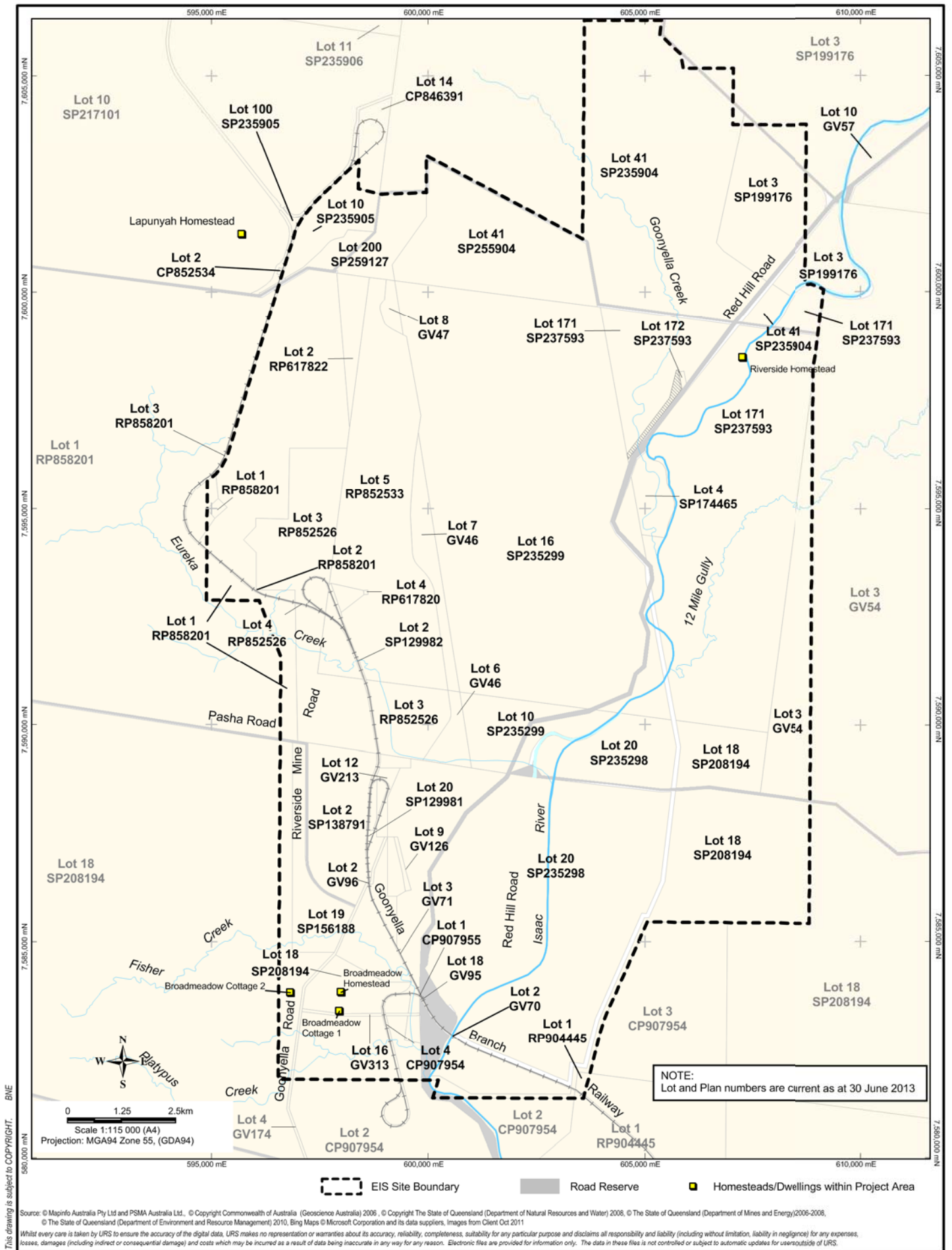


BHP Billiton Mitsubishi Alliance

**RED HILL MINING LEASE  
 CONTAMINATED LAND  
 PRELIMINARY SITE INVESTIGATION**

**LOCALITY MAP**





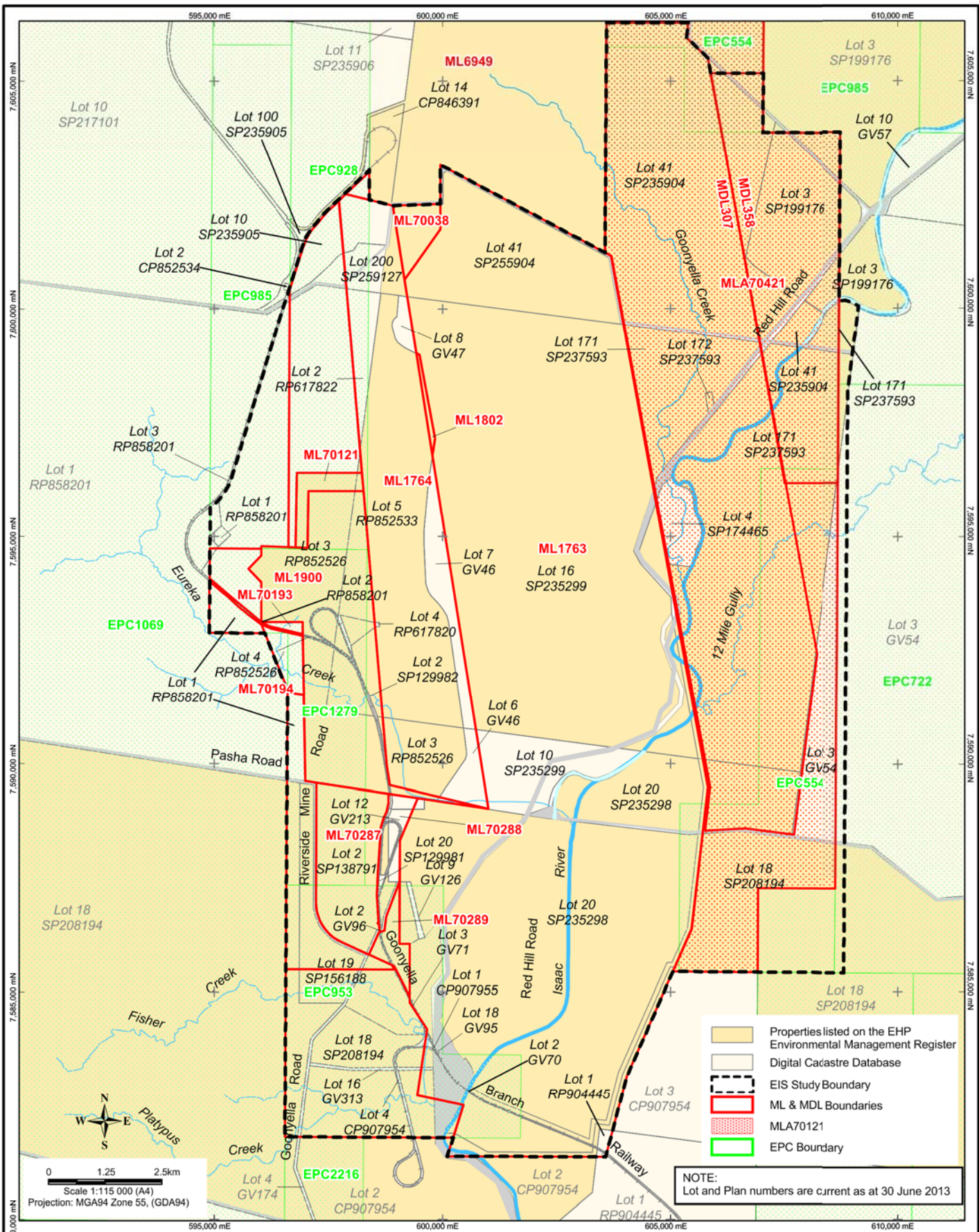
This drawing is subject to COPYRIGHT. BNE

Source: © Mapinfo Australia Pty Ltd and PSM Australia Ltd., © Copyright Commonwealth of Australia (Geoscience Australia) 2006, © Copyright The State of Queensland (Department of Natural Resources and Water) 2008, © The State of Queensland (Department of Mines and Energy) 2006-2008, © The State of Queensland (Department of Environment and Resource Management) 2010, Bing Maps © Microsoft Corporation and its data suppliers, Images from Client Oct 2011  
 Whilst every care is taken by URS to ensure the accuracy of the digital data, URS makes no representation or warranties about its accuracy, reliability, completeness, suitability for any particular purpose and disclaims all responsibility and liability (including without limitation, liability in negligence) for any expenses, losses, damages (including indirect or consequential damage) and costs which may be incurred as a result of data being inaccurate in any way for any reason. Electronic files are provided for information only. The data in these files is not controlled or subject to automatic updates for users outside of URS.



**RED HILL MINING LEASE  
 CONTAMINATED LAND  
 PRELIMINARY SITE INVESTIGATION**

**EXISTING TENURE**



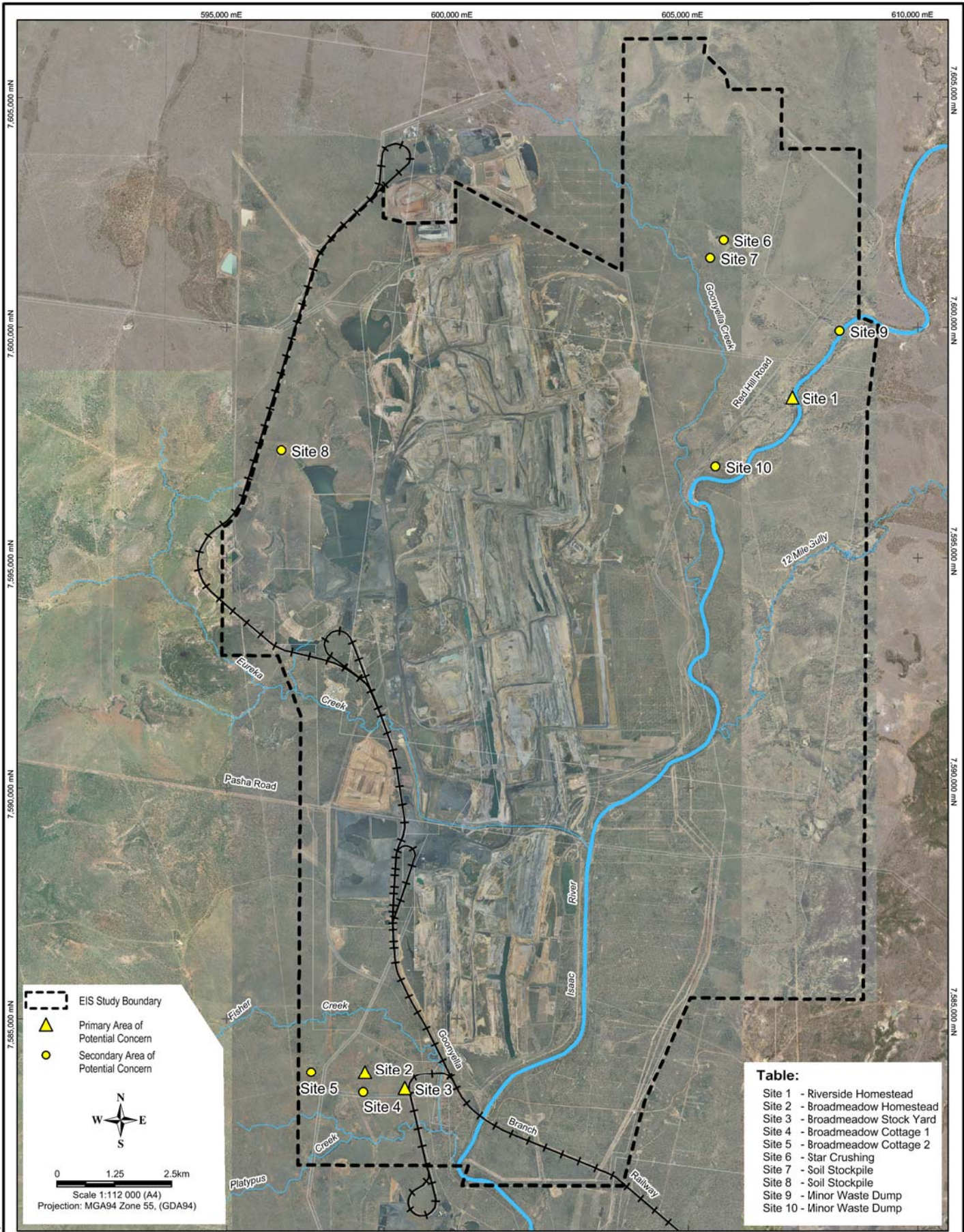
This drawing is subject to COPYRIGHT. BNE

Source: © Mapinfo Australia Pty Ltd and PMSA Australia Ltd., © Copyright Commonwealth of Australia (Geoscience Australia) 2006, © Copyright The State of Queensland (Department of Natural Resources and Water) 2008, © The State of Queensland (Department of Mines and Energy) 2006-2008, © The State of Queensland (Department of Environment and Resource Management) 2010, Bing Maps © Microsoft Corporation and its data suppliers. Images from Client Oct 2011  
 Whilst every care is taken by URS to ensure the accuracy of the digital data, URS makes no representation or warranties about its accuracy, reliability, completeness, suitability for any particular purpose and disclaims all responsibility and liability (including without limitation, liability in negligence) for any expenses, losses, damages (including indirect or consequential damage) and costs which may be incurred as a result of data being inaccurate in any way for any reason. Electronic files are provided for information only. The data in these files is not controlled or subject to automatic updates for users outside of URS.



**RED HILL MINING LEASE  
CONTAMINATED LAND  
PRELIMINARY SITE INVESTIGATION**

**EXISTING  
MINE TENURE**



This drawing is subject to COPYRIGHT. BNE

Source: © Mapinfo Australia Pty Ltd and PSM Australia Ltd., © Copyright Commonwealth of Australia (Geoscience Australia) 2006, © Copyright The State of Queensland (Department of Natural Resources and Water) 2008, © The State of Queensland (Department of Mines and Energy) 2006-2008, © The State of Queensland (Department of Environment and Resource Management) 2010, Bing Maps © Microsoft Corporation and its data suppliers, Images from Client Oct 2011  
 Whilst every care is taken by URS to ensure the accuracy of the digital data, URS makes no representation or warranties about its accuracy, reliability, completeness, suitability for any particular purpose and disclaims all responsibility and liability (including without limitation, liability in negligence) for any expenses, losses, damages (including indirect or consequential damage) and costs which may be incurred as a result of data being inaccurate in any way for any reason. Electronic files are provided for information only. The data in these files is not controlled or subject to automatic updates for users outside of URS.



**RED HILL MINING LEASE  
 CONTAMINATED LAND  
 PRELIMINARY SITE INVESTIGATION**

**AREAS  
 OF POTENTIAL CONCERN**

## Plates

**Plate B-1 Riverside Homestead - Stockyards with Crush and Stock Dip In Background (2009)**



**Plate B-2 Riverside Homestead - Stockyards, Crush and Stock Dip (2009)**



**Plate B-3 Riverside Homestead - Stock Dip (2009)**



**Plate B-4 Riverside Homestead - AST Fuel Storage (2009)**



**Plate B-5 Riverside Homestead - AST Fuel Storage (2009)**



Plate B-6 Riverside Homestead - AST Fuel Storage (2006)



Plate B-7 Riverside Homestead - Portable Fuel Storage (2009)





**Plate B-8 Riverside Homestead - Portable Fuel Storage (2009)**



**Plate B-9 Riverside Homestead - Portable Fuel Storage (2009)**



Plate B-10 Riverside Homestead - 205 L Drum Storage Including Unleaded Petrol, and Oil (2009)



Plate B-11 Riverside Homestead - Aviation Gas (2006)



Plate B-12 Riverside Homestead - Waste Oil Storage (2009)



Plate B-13 Riverside Homestead - Waste Oil Storage (2006)



**Plate B-14 Riverside Homestead - Field with Redundant Farm Equipment and Truck Parts (2009)**



**Plate B-15 Riverside Homestead - Defunct Farm equipment (2009)**



**Plate B-16 Broadmeadow Homestead - Stockyards (2009)**



**Plate B-17 Broadmeadow Homestead - Stockyard and Crush (2009)**



**Plate B-18 Broadmeadow Homestead - Storage Shed with Portable Fuel Storage (2009)**



**Plate B-19 Broadmeadow Homestead - Close Up of Fuel Storage (2009)**



**Plate B-20 Broadmeadow Homestead - Close up of Oil Storage (2009)**



**Plate B-21 Broadmeadow Homestead - Close Up Of Waste Oil Storage Outside Vehicle Storage Shed (2009)**





**Plate B-22 Broadmeadow Homestead - Close up of Additional Waste Oil Storage (2009)**



**Plate B-23 Broadmeadow Homestead - Field Containing Large Cable Reel, Redundant Truck Parts (2009)**



**Plate B-24 Broadmeadow Stockyard Illustrating Crush and Loading Ramp (2009)**



**Plate B-25 Broadmeadow Stockyard - Run Leading to Dip (2009)**



Plate B-26 Broadmeadow Stockyard - Dip (2009)



Plate B-27 Broadmeadow Stockyard - Discarded Cans Of Barricade S Cattle Dip and Spray Near Dip (2009)



**Plate B-28 Broadmeadow Cottage 1 - Red Hill Road Looking North (2009)**



**Plate B-29 Broadmeadow Cottage 1 - Red Hill Road Looking North (2009)**



**Plate B-30 Broadmeadow Cottage 2 - Front View of House (2009)**



**Plate B-31 Broadmeadow Cottage 2 - Rear View of House (2009)**



Plate B-32 Star Crushing - Front Entrance (2009)



Plate B-33 Eastern Exploration Area - Soil Stockpile close to Star Crushing Area (2009)



Plate B-34 Western Exploration Area - Soil Stockpile near Railway (2009)



Plate B-35 Mobile Plant - Diesel Storage (2009)





**Plate B-36 Exploration Drillhole Sump - Residual Waste Water Fenced off (2009)**



## Limitations Statement

URS Australia Pty Ltd (URS) has prepared this report in accordance with the usual care and thoroughness of the consulting profession for the use of BM Alliance Coal Operations Pty Ltd.

Except as required by law, no third party may use or rely on, this Report unless otherwise agreed by URS in writing. Where such agreement is provided, URS will provide a letter of reliance to the agreed third party in the form required by URS.

It is based on generally accepted practices and standards at the time it was prepared. No other warranty, expressed or implied, is made as to the professional advice included in this Report.

It is prepared in accordance with the scope of work and for the purpose outlined in the contract dated 23 December 2010.

Where this Report indicates that information has been provided to URS by third parties, URS has made no independent verification of this information except as expressly stated in the Report. URS assumes no liability for any inaccuracies in or omissions to that information.

This Report was prepared between January 2012 and October 2013 and is based on the conditions encountered and information reviewed at the time of preparation. URS disclaims responsibility for any changes that may have occurred after this time.

This Report should be read in full. No responsibility is accepted for use of any part of this report in any other context or for any other purpose. This Report does not purport to give legal advice. Legal advice can only be given by qualified legal practitioners.

To the extent permitted by law, URS expressly disclaims and excludes liability for any loss, damage, cost or expenses suffered by any third party relating to or resulting from the use of, or reliance on, any information contained in this Report. URS does not admit that any action, liability or claim may exist or be available to any third party.

Except as specifically stated in this section, URS does not authorise the use of this Report by any third party.

It is the responsibility of third parties to independently make inquiries or seek advice in relation to their particular requirements and proposed use of the site.

Any estimates of potential costs which have been provided are presented as estimates only as at the date of the Report. Any cost estimates that have been provided may therefore vary from actual costs at the time of expenditure.

## Appendix A Current and Historical Certificates of Title

## Appendix A - Current and Historical Certificates of Title

Lot No.	Plan No.	Title Reference	Owner/ Lessee	Created/ Terms of Lease	Comments
1	CP907955	48000769	State Government	Created:14/02/10	<ul style="list-style-type: none"> <li>Estate in Perpetuity</li> <li>Sublease to Queensland Rail 01/07/1995 to 30/06/2095</li> <li>Previous Title 4008706</li> </ul>
		40008706	State Government	Created:10/12/96	<ul style="list-style-type: none"> <li>Lease in Perpetuity commencing 01/07/1995</li> <li>Multiple subdivisions</li> <li>See Lot 2 on CP852534</li> </ul>
1	RP858201	50034857	AGH Williams	Created: 29/11/94	<ul style="list-style-type: none"> <li>Registered to current owner on 07/07/94</li> <li>Rights and Interests reserved to Crown by Deed of Grant 3054124 (Lot 4 on GV223)</li> <li>Easements F,G,H and J on SP102361 on 15/12/98 burdening the land to the Eungella Water Pipeline Pty Ltd</li> <li>Easements M, N, P, Q and R on SP102361 on 15/12/90 burdening the land to the Eungella Water Pipeline Pty Ltd.</li> <li>Easement D on SP175261 on 06/01/05 burdening the land to Enertrade (NQ) PIPELINE NO 1 Pty Ltd and Enertrade (NQ) PIPELINE NO2 Pty Ltd.</li> <li>Previous Title 30578147</li> </ul>
		30578147	AGH Williams	Created: 17/03/88	<ul style="list-style-type: none"> <li>Title issued to A.G.H Williams on 17/03/88 for Lot 1 on RP617824.</li> </ul>
1	RP904445	50146283	Moranbah Coal North and others	Created: 29/10/02	<ul style="list-style-type: none"> <li>Registered to current owner on 13/05/09</li> <li>Easement G on GV199 (Dealing 700853239) burdening the land to Thiess Dampier Mitsui Coal on 13/09/95.</li> <li>Easement C on GV75 (Dealing 700853216) burdening land to Utah Development Company and Mitsubishi Development Pty Ltd on 13/09/95</li> <li>Previous Title 17770130</li> </ul>
		17770130		Deed of Title	<ul style="list-style-type: none"> <li>Lot2 on GV320 and Lot5 on GV312 granted to K.W and MM Flohr on 01/09/95</li> </ul>

## Appendix A - Current and Historical Certificates of Title

Lot No.	Plan No.	Title Reference	Owner/ Lessee	Created/ Terms of Lease	Comments
2	C907954	40012200	Moranbah Coal North and others	Created: 27/10/97	<ul style="list-style-type: none"> <li>Registered to current owner on 25/05/03 for commercial/business use</li> <li>Burdening some of land to Utah Development Company and Mitsubishi Development Pty Ltd on 21/08/74</li> <li>Easement burdening some land to Theiss Dampier Mitsui Coal Pty Ltd on 14/05/84</li> <li>Easement O on burdening land to BHP Mitsui Coal Pty Ltd on 12/06/97</li> <li>Previous Title 17668022</li> </ul>
		17668022		Created: 26/04/84	<ul style="list-style-type: none"> <li>Lease granted to Shipfield Pty Ltd on 01/10/1982 for lease of Teviot Brook and RP description Lot 3543 on Plan PH1840</li> </ul>
2	GV69	48002900	State Government		<ul style="list-style-type: none"> <li>Transport Infrastructure Title - no searches carried out</li> </ul>
2	GV70	48002897	State Government		<ul style="list-style-type: none"> <li>Transport Infrastructure Title - no searches carried out</li> </ul>
2	GV96	48002890	State Government		<ul style="list-style-type: none"> <li>Transport Infrastructure Title - no searches carried out</li> </ul>
2	RP617822	30578150	BHP Coal Pty Ltd and Others	Created: 17/03/88	<ul style="list-style-type: none"> <li>Registered to current owner on 17/02/06</li> <li>Deed of Grant No 30540124 (Lot 4 on CP GV 223)</li> <li>Previous Title 30541024</li> </ul>
		30540124		Created: 09/05/85	<ul style="list-style-type: none"> <li>Title issued to Alan Gordon Homer Williams for Lot4 GV223 on 9/05/85</li> </ul>
2	RP858201	48002932	State Government		<ul style="list-style-type: none"> <li>Transport Infrastructure Title - no searches carried out</li> </ul>
2	SP129982	48002873	State Government		<ul style="list-style-type: none"> <li>Transport Infrastructure Title - railway - no searches carried out</li> </ul>
2	SP138791	40058792	BHP Coal and others	Created: 06/08/2009	<ul style="list-style-type: none"> <li>21 year lease from 19/06/2009 to 18/06/2030 for industrial purposes associated with ML1763</li> <li>Previous Title 17575171</li> <li>Multiple Easements including Easement D on Plan GV189 to BHP Mitsui Coal</li> <li>Rights and interests reserved to the crown by lease 40058792</li> <li>Previous Title 17575171</li> </ul>

## Appendix A - Current and Historical Certificates of Title

Lot No.	Plan No.	Title Reference	Owner/ Lessee	Created/ Terms of Lease	Comments
		17575171	BHP Coal and others	Created: 21/10/95	<ul style="list-style-type: none"> <li>Registered to current owner on 03/09/04</li> <li>Easement D on GV189 (Dealing 602809864) burdening land to BHP Mitsui Coal Pty LTD on 10/07/92</li> <li>Previously Lot 2 on GV314 and Lot 2 on GV229</li> </ul>
3	CP907954	40012212	Moranbah Coal North and others	Created: 27/10/97	<ul style="list-style-type: none"> <li>Lease for 33 years 3 months 7 days commencing 25/09/97</li> <li>Registered to current owner on 29/05/12</li> <li>Burdening some of land to Utah Development Company and Mitsubishi Development Pty Ltd on 21/08/74</li> <li>Easement burdening some land to Theiss Dampier Mitsui Coal Pty Ltd on 14/05/84</li> <li>Easement O on burdening land to BHP Mitsui Coal Pty Ltd on 12/06/97</li> <li>Previous Title 17668022</li> </ul>
		17668022		Created: 26/04/84	<ul style="list-style-type: none"> <li>Lease granted to Shipfield Pty Ltd on 01/10/1982 for lease of Teviot Brook and RP description Lot 3543 on Plan PH1840</li> </ul>
3	GV54	50368034	AGH Williams	Created: 08/10/01	<ul style="list-style-type: none"> <li>Registered to current owner on 08/01/01 under Deed of Grant (title:40030413) created on 01/10/01</li> <li>Easement A on CPGV150 (Dealing 602799752) was registered on 05/06/79 burdening the land to the Queensland Electricity Commission</li> <li>Easement F on SP184907 (Dealing 711278411) was registered on 17/12/07 to the Queensland Electricity Transmission Corporation and transferred to the Queensland Electricity Transmission Corporation on 24/01/03</li> <li>Previous Title 40030413</li> </ul>
		40030413	AGH Williams	Deed of Grant	<ul style="list-style-type: none"> <li>Deed of Grant issued to A.G.H Williams on 04/10/01</li> <li>Previous Title 17627161</li> </ul>
		17627161	AGH Williams	Created: 16/06/80	<ul style="list-style-type: none"> <li>Title Freehold Lease (30/3877) granted to A.G.H Williams for 40 years from 01/04/77. Replaces previous grazing lease (number unknown) held by A.G.H Williams</li> </ul>
3	GV71	48002895	State Government		<ul style="list-style-type: none"> <li>Transport Infrastructure Title - no searches carried out</li> </ul>

## Appendix A - Current and Historical Certificates of Title

Lot No.	Plan No.	Title Reference	Owner/ Lessee	Created/ Terms of Lease	Comments
3	RP852526	30654229	BHP Coal and others	Created: 14/01/94	<ul style="list-style-type: none"> <li>Registered to current owners on 17/02/06</li> <li>Easement A on RP617820 (Dealing 601366079) burdening the land to Lot 5 on RP617821 on 06/12/1988</li> <li>Easement A on RP617820 (Dealing 601366080) burdening the land to Lot 4 on RP617820 on 18/04/1989</li> <li>Easement R on SP101814 (Dealing 703254185) burdening the land to Eungella Water Pipeline Pty Ltd on 30/03/99</li> <li>Easement A on RP617820 (Dealing 703254194) burdening the land to Eungella Water Pipeline Pty Ltd on 30/03/1999</li> <li>Previous Title 30578148</li> </ul>
		30578148		Created: 17/03/88	<ul style="list-style-type: none"> <li>Issued to A.G.H Williams and transferred to Thiess Dampier Mitsui Coal on 10/01/90</li> </ul>
3	RP858201	48002936	State Government		<ul style="list-style-type: none"> <li>Transport Infrastructure Title - no searches carried out</li> </ul>
3	SP199176	50781962	GC Shaw	Created: 07/09/2009	<ul style="list-style-type: none"> <li>Registered to current owner on 06/08/2009</li> <li>Interests held by Peabody and Rag Australia Coal Pty Ltd</li> <li>Rights and interests reserved to the Crown by Deed of Grant No. 30647030 (Lot 8 on CP 852581) and Deed of Grant No. 40034316 (Lot 1 on CP GV334)</li> <li>Previous Titles 30649168 and 50756024</li> </ul>
		30649168	GC Shaw	Created: 28/09/93	<ul style="list-style-type: none"> <li>Registered to current owner on 16/03/00</li> <li>Formerly Lot 16 on RP852582</li> <li>Previous Title 30647030</li> </ul>
		30647030		Deed of Grant	<ul style="list-style-type: none"> <li>Previously Lot 8 CP85281 - fully cancelled</li> <li>Original freehold grazing lease granted to Clarence Gilbert Shaw and Marjorie Hope Shaw on 24/04/1969 and deed of grant of freehold issued 19/08/1993 issued to Clarence G. Shaw and Geoffrey Charles Shaw. Title transferred to G.C. Shaw in 16/03/2000</li> </ul>

## Appendix A - Current and Historical Certificates of Title

Lot No.	Plan No.	Title Reference	Owner/ Lessee	Created/ Terms of Lease	Comments
		50756024	Peabody and others	Created: 28/01/09	<ul style="list-style-type: none"> <li>Leased to Peabody and others 23/01/2009</li> <li>Lot 1 on SP199175, subdivided into Lots 3 and 4 on SP199176</li> <li>Rights and interests reserved to the Crown by Deed of Grant No. 40034316 (Lot 1 on CP GV334) and deed of grant no. 40050006 (Lot 3 on CP 852527)</li> <li>Previous titles 50406234 and 50570964</li> </ul>
		50406234	RAG Australia Coal Pty Ltd & Thiess NG Pty Ltd	Created: 02/09/02	<ul style="list-style-type: none"> <li>Registered to current owner on 30/08/02</li> <li>Lot 1 on CP GV334</li> <li>Multiple Easements</li> <li>Previous Title 40034316</li> </ul>
		40034316	RAG Australia Coal Pty Ltd and Thiess NG Pty Ltd	Created: 30/08/02	<ul style="list-style-type: none"> <li>Registered to owner on 29/08/2005</li> <li>Title has been fully cancelled</li> </ul>
		50570964	DV & RA Kemp	Created: 6/09/05	<ul style="list-style-type: none"> <li>Registered to current owner on 05/09/05</li> <li>Lot 3 on CP852527</li> <li>Easement J on SP10232 (Dealing 703232031) burdening land to Eungella Water Pipeline Pty Ltd on 18/03/99</li> <li>Easement E on SP175262 (Dealing 708498702) burdening land to Enertrade Pipeline No 1 Pty Ltd and Enertrade Pipeline No 2 Pty Ltd on 11/03/05</li> <li>Deed of Grant 40050006 (Lot3 on CP852527)</li> <li>Previous Title 40050006</li> </ul>
		40050006		Deed of Grant	<ul style="list-style-type: none"> <li>Deed of Grant issued to DV &amp; RA Kemp on 01/09/05</li> <li>Previous Title 17627188</li> </ul>
		17627188	DV & RA Kemp	Created: 15/03/79	<ul style="list-style-type: none"> <li>Freehold Grazing Lease granted to DV and RA Kemp on 15/03/79</li> <li>Previous title Lot 3 on GV209</li> </ul>
4	CP907954	48001013	State Government		<ul style="list-style-type: none"> <li>Transport Infrastructure Title - no searches carried out</li> </ul>
4	GV174	40058793	BHP Coal and others	Created: 01/07/09	<ul style="list-style-type: none"> <li>Lease for 21 years from 19/06/09 to 18/06/2030 for commercial/business purposes in relation to ML1763</li> <li>Lot4 on GV174, Lot 16 on GV313, Lot 3 on SP109690</li> <li>Multiple easements</li> <li>Previous Title 17575172</li> </ul>



## Appendix A - Current and Historical Certificates of Title

Lot No.	Plan No.	Title Reference	Owner/ Lessee	Created/ Terms of Lease	Comments
		17575172	State Government	Created: 21/10/95	<ul style="list-style-type: none"> <li>Allocated for Private Road</li> <li>Easements N, E, L on GV313, GV190 and GV188 (Dealing 602809865) on 10/07/92</li> <li>Easements R and B on GV313 and GV200 (Dealing 302819866) on 10/07/92</li> <li>Easement M on SP105029 (Dealing 702827117) burdening Lot3 on CP895943 to Lot 1 on CP907952 on 05/08/98</li> <li>Easement D on SP102356 (Dealing 703081870) burdening the land to Eungella Water Pipeline Pty Ltd on 23/12/98</li> <li>Easement on Lot4 GV174 (Dealing 703081877) burdening the land to Eungella Water Pipeline Pty Ltd on 23/12/98</li> <li>Easement C on SP102357 (Dealing 703081882) burdening the land to Eungella Water Pipeline Pty Ltd on 23/12/98</li> <li>Easement D on SP102358 (Dealing 703081885) burdening the land to Eungella Water Pipeline Pty Ltd on 23/12/98</li> <li>Dealing 703406116 burdening the land to Lot1 CP90752 on 22/06/99</li> <li>Easement BB on SP175259 (Dealing 709121063) burdening Lot3 SP109690 to Lot11 SP175258</li> </ul>
4	RP617820	30578151	Australian Communications Commission	Created: 17/03/88	<ul style="list-style-type: none"> <li>Easements B and C on RP617820 (Dealing 601366076) on 18/04/89</li> <li>Easement A on RP617820 (Dealing 301966080) on 18/04/89</li> <li>Rights and Interests reserved to the Crown by deed of grant no. 305040166 (Lot 2 on CP215)</li> <li>Previous Title 30540166</li> </ul>
		30540166	Eelin Williams	Title Deed	<ul style="list-style-type: none"> <li>Title issued to Eelin Williams for Lot2 GV215 on 27/06/85</li> <li>In 1988, was subdivided into Lots 2, 4 and 5</li> </ul>
4	RP852526	48002918	State Government		<ul style="list-style-type: none"> <li>Transport Infrastructure Title - no searches carried out</li> </ul>

## Appendix A - Current and Historical Certificates of Title

Lot No.	Plan No.	Title Reference	Owner/ Lessee	Created/ Terms of Lease	Comments
4	SP174465	40020199	AGH Williams	Created: 28/05/99	<ul style="list-style-type: none"> <li>Registered to current owner on 25/07/01 for grazing purposes</li> <li>20 year lease commencing 01/01/1999 to 31/12/2018</li> <li>Previously Lot 5 on GV13</li> <li>Subdivided into Lot 4 and Lot 16 on SP174465</li> <li>Rights and interests reserved to the crown by Lease No. 40020199</li> </ul>
5	RP852533	30654228	BHP Coal and others	Created: 14/01/94	<ul style="list-style-type: none"> <li>Registered to current owner on 17/02/06</li> <li>Easements B and C on RP617820 (Dealing 604366076) burdening the land to Lot4 RP617820 on 18/04/89</li> <li>Easement S on SP101815 (Dealing 703254189) burdening the land to Eungella Water Pipeline Pty Ltd on 30/03/99</li> <li>Previous Title 30540166</li> </ul>
		30540166		Title Deed	<ul style="list-style-type: none"> <li>Title issued to E Williams for Lot 2 GV215 on 27/06/85</li> <li>Previous Title 30578149</li> </ul>
		30578149		Created: 17/03/88	<ul style="list-style-type: none"> <li>Registered to E Williams on 17/03/88 and transferred to Thiess Dampier Mitsui Coal (on 27/12/89)</li> </ul>
6	GV46	47021611	State Government		<ul style="list-style-type: none"> <li>Unallocated State Land – no searches carried out</li> </ul>
7	GV46	47021612	State Government		<ul style="list-style-type: none"> <li>Unallocated State Land – no searches carried out</li> </ul>
7	USL37429	47006695	State Government		<ul style="list-style-type: none"> <li>Unallocated State Land – no searches carried out</li> </ul>
8	GV47	47021614	State Government		<ul style="list-style-type: none"> <li>Unallocated State Land – no searches carried out</li> </ul>
8	USL37428	47006703	State Government		<ul style="list-style-type: none"> <li>Unallocated State Land – no searches carried out</li> </ul>
8	USL37429	47006694	State Government		<ul style="list-style-type: none"> <li>Unallocated State Land – no searches carried out</li> </ul>
9	GV126	40002577	BHP Coal and others	Created: 05/02/96	<ul style="list-style-type: none"> <li>Registered to current owner for 20 year lease commencing 25/10/1995 for coal mining purposes</li> <li>Previously Lot 2 on GV314 and Lot2 on GV229</li> </ul>
9	USL37428	47006702	State Government		<ul style="list-style-type: none"> <li>Unallocated State Land – no searches carried out</li> </ul>

## Appendix A - Current and Historical Certificates of Title

Lot No.	Plan No.	Title Reference	Owner/ Lessee	Created/ Terms of Lease	Comments
10	GV52	30540167	BHP Coal and others	Created: 27/06/85	<ul style="list-style-type: none"> <li>Registered to current owner on 01/06/05</li> <li>Easement Y on GV121 (Dealing 601685027) burdening the land to Utah Development Company on 04/07/85</li> </ul>
				Deed of Grant	<ul style="list-style-type: none"> <li>Rights and interests reserved to the Crown by Deed of Grant No. 30540167 (Lot 10 on CP GV52)</li> </ul>
10	SP235299	50906336	BHP Coal and others	Created: 15/02/13	<ul style="list-style-type: none"> <li>Registered to current owner on 15/02/13</li> <li>Easement Y on GV121 (Dealing 601685027) burdening the land to Utah Development Company on 04/07/85</li> <li>Previous Title 40065662</li> </ul>
		40065662	BHP Coal and others	Created: 15/02/13	<ul style="list-style-type: none"> <li>Rights and interests reserved to the Crown by Deed of Grant No. 30540167 (Lot 10 on CP GV52)</li> </ul>
		30540167		Deed of Grant	<ul style="list-style-type: none"> <li>Rights and interests reserved to the Crown by Deed of Grant No. 30540167 (Lot 10 on CP GV52)</li> </ul>
10	USL37429	47006692	State Government		<ul style="list-style-type: none"> <li>Unallocated State Land – no searches carried out</li> </ul>
11	USL39191	47006540	State Government		<ul style="list-style-type: none"> <li>Unallocated State Land – no searches carried out</li> </ul>
12	GV213	40058794	BHP Coal and others	Created: 01/07/09	<ul style="list-style-type: none"> <li>Lease for 21 years from 19/06/2009 through 18/06/2030 for industrial purposes associated with ML1763</li> <li>Rights and interests reserved to the Crown by Lease No. 40058794</li> <li>Previous Title 1576191</li> </ul>
		17576191	BHP Coal and others	Created: 21/10/95	<ul style="list-style-type: none"> <li>Registered to current owner on 03/09/04 for Industrial Purposes</li> </ul>
12	USL39191	47006540	State Government		<ul style="list-style-type: none"> <li>Unallocated State Land – no searches carried out</li> </ul>
13	USL39191	47006539	State Government		<ul style="list-style-type: none"> <li>Unallocated State Land – no searches carried out</li> </ul>
14	CP846391	30632156	Peabody	Created 20/11/92	<ul style="list-style-type: none"> <li>Registered to current owner on 22/04/10</li> </ul>
				Deed of Grant	<ul style="list-style-type: none"> <li>Rights and interests reserved to the Crown by Deed of Grant No 30632156</li> </ul>
15	USL39191	47006538	State Government		<ul style="list-style-type: none"> <li>Unallocated State Land – no searches carried out</li> </ul>

## Appendix A - Current and Historical Certificates of Title

Lot No.	Plan No.	Title Reference	Owner/ Lessee	Created/ Terms of Lease	Comments
16	GV313	40058793	BHP Coal and others	Created: 01/07/09	<ul style="list-style-type: none"> <li>Lease for 21 years from 19/06/09 to 18/06/2030 for commercial/business purposes in relation to ML1763</li> <li>Lot4 on GV174, Lot 16 on GV313, Lot 3 on SP109690</li> <li>Multiple easements</li> <li>Previous Title 17575172</li> </ul>
		17575172	State Government	Created: 21/10/95	<ul style="list-style-type: none"> <li>Allocated for Private Road</li> <li>Easements N, E, L on GV313, GV190 and GV188 (Dealing 602809865) on 10/07/92</li> <li>Easements R and B on GV313 and GV200 (Dealing 302819866) on 10/07/92</li> <li>Easement M on SP105029 (Dealing 702827117) burdening Lot3 on CP895943 to Lot 1 on CP907952 on 05/08/98</li> <li>Easement D on SP102356 (Dealing 703081870) burdening the land to Eungella Water Pipeline Pty Ltd on 23/12/98</li> <li>Easement on Lot4 GV174 (Dealing 703081877) burdening the land to Eungella Water Pipeline Pty Ltd on 23/12/98</li> <li>Easement C on SP102357 (Dealing 703081882) burdening the land to Eungella Water Pipeline Pty Ltd on 23/12/98</li> <li>Easement D on SP102358 (Dealing 703081885) burdening the land to Eungella Water Pipeline Pty Ltd on 23/12/98</li> <li>Dealing 703406116 burdening the land to Lot1 CP90752 on 22/06/99</li> <li>Easement BB on SP175259 (Dealing 709121063) burdening Lot3 SP109690 to Lot11 SP175258</li> </ul>
16	SP235299	50906335	BHP Coal and others	Created:15/02/13	<ul style="list-style-type: none"> <li>Easements C and X on CP GV73 and GV121 burdening the land to Utah Development Company</li> <li>Rights and interests reserved to the Crown by Deed of Grant No. 30540166 (Lot 2 on CP GV215)</li> <li>Previous Title 40065663</li> </ul>

## Appendix A - Current and Historical Certificates of Title

Lot No.	Plan No.	Title Reference	Owner/ Lessee	Created/ Terms of Lease	Comments
		40065663		Deed of Grant of Land	<ul style="list-style-type: none"> <li>Created 15/02/2013</li> <li>Easements C and X on CP GV73 and GV121 burdening the land to Utah Development Company</li> <li>Rights and interests reserved to the Crown by Deed of Grant No. 30540166 (Lot 2 on CP GV215)</li> </ul>
		50799413	BHP Coal and others	Created 29/01/10	<ul style="list-style-type: none"> <li>Easements C and X on CP GV73 and GV121 burdening the land to Utah Development Company</li> <li>Rights and interests reserved to the Crown by Deed of Grant No. 30540166 (Lot 2 on CP GV215)</li> <li>Previous Title 40059676</li> </ul>
		40059676	BHP Coal and others	Created: 29/01/10	<ul style="list-style-type: none"> <li>Registered to current owner on 29/01/2010</li> <li>Easements C and X on CP GV73 and GV121 burdening the land to Utah Development Company</li> <li>Rights and interests reserved to the Crown by Deed of Grant No. 30540166 (Lot 2 on CP GV215)</li> <li></li> </ul>
18	GV95	48002896	State Government	Created: 17/10/03	<ul style="list-style-type: none"> <li>Transport Infrastructure Title - no searches carried out</li> </ul>

## Appendix A - Current and Historical Certificates of Title

Lot No.	Plan No.	Title Reference	Owner/ Lessee	Created/ Terms of Lease	Comments
18	SP208194	40046247	AGH Williams	Created: 08/04/05	<ul style="list-style-type: none"> <li>• Previously Lot 18 on SP156188</li> <li>• Lease for 27 years 9 months to current owner on 01/06/05 for Pastoral purposes</li> <li>• Easements A and B on GV39 (Dealing 602806079) burdening the land to Queensland Electricity Commission on 09/10/70</li> <li>• Easement D on GV75 (Dealing 602806080) burdening land to Utah Development Company and Mitsubishi Development Pty Ltd on 21/08/74</li> <li>• Easements B, D and E on GV98 (Dealing 602806081) burdening the land to Utah Development Company and Mitsubishi Development Pty Ltd on 21/08/7</li> <li>• Easements A on GV149 (Dealing 602806083) burdening the land to Queensland Electricity Commission on 30/05/79</li> <li>• Easements G and H on GV200 (Dealing 602806086) burdening the land to Thiess Dampier Mitsui Coal Pty Ltd on 14/05/84</li> <li>• Easement C on GV278 (Dealing 602806087) burdening the land to Queensland Electricity Commission) on 12/07/86</li> <li>• Easement O on CP904434 (Dealing 702030047) burdening the land to BHP Mitsui Coal Pty Ltd on 12/06/97</li> <li>• Easement E on SP102359 (Dealing 703081919) burdening the land to Eungella Water Pipeline Pty Ltd on 23/12/98</li> <li>• Easement CC on SP175356 (Dealing 709575803) burdening the land to Enertrade (NQ) Pipeline No1 Pty Ltd and Enertrade (NQ) Pipeline No2 Pty Ltd on 09/05/06</li> <li>• Subdivided from Lot1 CP907954</li> <li>• Rights and interests reserved to the Crown by lease No. 40046247</li> <li>• Previous Title 17668022</li> </ul>
		17668022	Shipfield Pty Ltd	Created: 26/04/84	<ul style="list-style-type: none"> <li>• Lease granted to Shipfield Pty Ltd on 01/10/1982 for lease of Teviot Brook and RP description Lot 3543 on Plan PH1840</li> <li>• Lot 11 on SP147333 subdivided the land into Lots 18 to 20 on SP156888 on 22/12/2004</li> </ul>

## Appendix A - Current and Historical Certificates of Title

Lot No.	Plan No.	Title Reference	Owner/ Lessee	Created/ Terms of Lease	Comments
19	SP156188	40046248	BHP Coal and others	Created: 08/04/05	<ul style="list-style-type: none"> <li>Registered to current owner on 17/02/06 for Pastoral Uses</li> <li>Easements B, D and E on GV98 (Dealing 602806081) burdening the land to Utah Development Company and Mitsubishi Development Pty Ltd on 21/08/74</li> <li>Easements G and H on GV200 (Dealing 602806086) burdening the land to Thiess Dampier Mitsui Coal Pty Ltd on 14/05/84</li> <li>Previous Title 17668022</li> </ul>
		17668022	Shipfield Pty Ltd	Created: 26/04/84	<ul style="list-style-type: none"> <li>Lease granted to Shipfield Pty Ltd on 01/10/1982 for lease of Teviot Brook and RP description Lot 3543 on Plan PH1840</li> <li>Lot 11 on SP147333 subdivided the land into Lots 18 to 20 on SP156888 on 22/12/2004</li> <li>Dealing 705647649 subdivided Lot 11 on SP138791 into Lots 11 and 12 on SP147333 on 24/05/2002</li> <li>Dealing 704718736 subdivided Lot 11 on CP907954 into Lot 11 on SP138791 on 24/04/2001</li> <li>An undisclosed area excised for a road and tenure amended to Lot 11 on SP138791 on 19/03/2001</li> <li>Tenure description changed to Lot 1 on CP907954 on 26/04/2001. Survey plan subdivides the land into Lots 1 to 4 on CP907954 on 1/10/1997</li> </ul>
20	SP129981	48002871	State Government		<ul style="list-style-type: none"> <li>Transport Infrastructure Title - no searches carried out</li> </ul>
20	SP235298	40046249	BHP Coal and others	Created: 08/04/05	<ul style="list-style-type: none"> <li>Registered to current owners for pastoral uses</li> <li>Multiple roadway easements</li> <li>Previous Title 17668022</li> </ul>

## Appendix A - Current and Historical Certificates of Title

Lot No.	Plan No.	Title Reference	Owner/ Lessee	Created/ Terms of Lease	Comments
		17668022	Shipfield Pty Ltd	Created: 26/04/84	<ul style="list-style-type: none"> <li>Lease granted to Shipfield Pty Ltd on 01/10/1982 for lease of Teviot Brook and RP description Lot 3543 on Plan PH1840</li> <li>Lot 11 on SP147333 subdivided the land into Lots 18 to 20 on SP156888 on 22/12/2004</li> <li>Dealing 705647649 subdivided Lot 11 on SP138791 into Lots 11 and 12 on SP147333 on 24/05/2002</li> <li>Dealing 704718736 subdivided Lot 11 on CP907954 into Lot 11 on SP138791 on 24/04/2001</li> <li>An undisclosed area excised for a road and tenure amended to Lot 11 on SP138791 on 19/03/2001</li> <li>Tenure description changed to Lot 1 on CP907954 on 26/04/2001. Survey plan subdivides the land into Lots 1 to 4 on CP907954 on 1/10/1997</li> </ul>
41	SP235904	50911186	Peabody (Bowen)	Created: 24/04/13	<ul style="list-style-type: none"> <li>Registered to current owner of 19/04/13</li> <li>Multiple easements</li> <li>Rights and interests reserved to the crown by Deed of Grant 40034316 (Lot 1 CPGV334) and Deed of Grant 40050006 (Lot 3 CP852527)</li> <li>Previous Title 50781963</li> </ul>
		50781963	Peabody (Bowen)	Created: 07/09/09	<ul style="list-style-type: none"> <li>Registered to current owners 22/4/2010</li> <li>Multiple Easements</li> <li>Rights and interests reserved to the Crown by Deed of Grant No. 40034316 (Lot 1 on CP GV334) and Deed of Grant No. 40050006 (Lot 3 on CP 852527)</li> <li>Previous Title 50756024</li> </ul>
		50756024	Peabody and others	Created: 28/01/09	<ul style="list-style-type: none"> <li>Leased to Peabody and others 23/01/2009</li> <li>Lot 1 on SP199175, subdivided into Lots 3 and 4 on SP199176</li> <li>Rights and interests reserved to the Crown by Deed of Grant No. 40034316 (Lot 1 on CP GV334) and deed of grant no. 40050006 (Lot 3 on CP 852527)</li> <li>Previous titles 50406234 and 50570964</li> </ul>
		50406234	RAG Australia Coal Pty Ltd & Thiess NG Pty Ltd	Created: 02/09/02	<ul style="list-style-type: none"> <li>Registered to current owner on 30/08/02</li> <li>Lot 1 on CP GV334</li> <li>Multiple Easements</li> <li>Previous Title 40034316</li> </ul>



## Appendix A - Current and Historical Certificates of Title

Lot No.	Plan No.	Title Reference	Owner/ Lessee	Created/ Terms of Lease	Comments
		40034316	RAG Australia Coal Pty Ltd and Thiess NG Pty Ltd	Created: 30/08/02	<ul style="list-style-type: none"> <li>Registered to owner on 29/08/2005</li> <li>Title has been fully cancelled</li> </ul>
		50570964	DV & RA Kemp	Created: 6/09/05	<ul style="list-style-type: none"> <li>Registered to current owner on 05/09/05</li> <li>Lot 3 on CP852527</li> <li>Easement J on SP10232 (Dealing 703232031) burdening land to Eungella Water Pipeline Pty Ltd on 18/03/99</li> <li>Easement E on SP175262 (Dealing 708498702) burdening land to Enertrade Pipeline No 1 Pty Ltd and Enertrade Pipeline No 2 Pty Ltd on 11/03/05</li> <li>Deed of Grant 40050006 (Lot3 on CP852527)</li> <li>Previous Title 40050006</li> </ul>
		40050006		Deed of Grant	<ul style="list-style-type: none"> <li>Deed of Grant issued to DV &amp; RA Kemp on 01/09/05</li> <li>Previous Title 17627188</li> </ul>
		17627188	DV & RA Kemp	Created: 15/03/79	<ul style="list-style-type: none"> <li>Freehold Grazing Lease granted to DV and RA Kemp on 15/03/79</li> <li>Previous title Lot 3 on GV209</li> </ul>
172	SP237593	<b>50851016</b>	Qld Electricity Commission	Created: 06/07/11	<ul style="list-style-type: none"> <li>Registered to current owner on: 19/05/11</li> <li>Rights and interests reserved to the Crown by Deed of Grant No. 30540166 (Lot 2 on CP GV215)</li> <li>Previous Title 50462642</li> </ul>
		50462642	AGH Williams	Created: 17/10/03	<ul style="list-style-type: none"> <li>Registered to current owner on 15/10/2003</li> <li>Easement burdening the land to Queensland Electricity Transmission Corporation on 13/07/99</li> <li>Easement C and X on GV73 and GV121 burdening the land to Utah Development Company on 04/07/85</li> <li>Easements A and B on GV45 burdening the land to The Northern Electric Authority of Queensland on 04/07/85</li> <li>Previous Title/Deed 30540166</li> </ul>
		30540166	Eelin Williams	Title Deed	<ul style="list-style-type: none"> <li>Title issued to Eelin Williams for Lot2 GV215 on 27/06/85</li> <li>In 1988, was subdivided into Lots 2, 4 and 5 on Lot CP GV215</li> </ul>

## Appendix A - Current and Historical Certificates of Title

Lot No.	Plan No.	Title Reference	Owner/ Lessee	Created/ Terms of Lease	Comments
200	SP259127	40064570	BHP Coal and others	Created: 11/07/12	<ul style="list-style-type: none"> <li>Lease for 17 years 11 months 18 days expiring 18/06/30</li> <li>Subdivision for road easement 08/04/13</li> <li>Subdivision of land to Lot 200 on SP258010</li> <li>Rights and interests reserved to the Crown by Lease No. 40064570</li> <li>Combined from Lot 13 on GV312, Lot 12 on CP852528</li> <li>Previous Title 40023857</li> </ul>
		40023857	BHP Coal and others	Created: 03/03/00	<ul style="list-style-type: none"> <li>Registered to current owner on 10/03/06 for Industrial Purposes</li> <li>Special Lease granted on 12/06/1986 to Thiess Dampier Mitsui Coal Pty Ltd and land parcel described as Lot 13 on Plan GV220</li> <li>Previous Title 40023858</li> </ul>
		40023858	BHP Coal and others	Created: 03/03/00	<ul style="list-style-type: none"> <li>Lease for 15 years from 01/08/1999 through 31/07/2014 for Industrial Purposes</li> <li>Previous Title 40058795</li> </ul>
		40058795	BHP Coal and others	Created 31/07/09	<ul style="list-style-type: none"> <li>Lease for 21 years from 19/06/09 to 18/06/2030 for industrial purposes associated with ML1763</li> <li>Rights and interests reserved to the Crown by Lease No. 40058795</li> <li>Previous Title 17579004</li> </ul>
		17579004	BHP Coal and others	Created: 22/10/95	<ul style="list-style-type: none"> <li>Registered to current owner on 03/09/04 for Industrial (Coal Mining) purposes for 25 year 6 month lease</li> <li>Previous Title 17650082</li> </ul>
		17650082			<ul style="list-style-type: none"> <li>Unable to locate through search database - Title Ref 17650082 is either invalid or is not yet fully captured</li> </ul>

## Appendix B EHP Priority Sites Register Search

**QLD ENVIRONMENTAL PROTECTION AGENCY****ENVIRONMENTAL MANAGEMENT REGISTER (EMR)  
CONTAMINATED LAND REGISTER (CLR)**

Transaction ID: 1136604      EMR Site Id: 26 May 2009  
This response relates to a search request received for the site:  
Lot: 1      Plan: CP907955

**EMR RESULT**

The above site is NOT included on the Environmental Management Register.

**CLR RESULT**

The above site is NOT included on the Contaminated Land Register.

**ADDITIONAL ADVICE**

**EMR/CLR Searches may be conducted online through the State Government Website [www.smartservice.qld.gov.au](http://www.smartservice.qld.gov.au) or Citec Confirm [www.confirm.com.au](http://www.confirm.com.au).**

If you have any queries in relation to this search please phone (07) 3227 7370.

Lindi Bowen  
**Registrar, Contaminated Land Unit**



Department of Environment and Heritage Protection (EHP)  
ABN 46 640 294 485  
400 George St Brisbane, Queensland 4000  
GPO Box 2454, Brisbane QLD 4001, AUSTRALIA  
www.ehp.qld.gov.au

**SEARCH RESPONSE**  
ENVIRONMENTAL MANAGEMENT REGISTER (EMR)  
CONTAMINATED LAND REGISTER (CLR)

Janelle Kuter  
17/240 Queen St  
Brisbane QLD 4000

Transaction ID: 49391735                      EMR Site Id:                      01 October 2013  
Cheque Number:  
Client Reference:

This response relates to a search request received for the site:  
Lot: 1                      Plan: RP858201  
MABBIN Road  
CLERMONT

**EMR RESULT**

The above site is NOT included on the Environmental Management Register.

**CLR RESULT**

The above site is NOT included on the Contaminated Land Register.

**ADDITIONAL ADVICE**

**From the 1st August 2012, the price of an EMR/CLR search will increase to \$41.55 per lot for internet based searches and \$48.85 per lot for EMR/CLR searches done by means other than the internet.**

If you have any queries in relation to this search please phone 13QGOV (13 74 68)

**Registrar  
Administering Authority**



Department of Environment and Heritage Protection (EHP)  
ABN 46 640 294 485  
400 George St Brisbane, Queensland 4000  
GPO Box 2454, Brisbane QLD 4001, AUSTRALIA  
www.ehp.qld.gov.au

**SEARCH RESPONSE**  
ENVIRONMENTAL MANAGEMENT REGISTER (EMR)  
CONTAMINATED LAND REGISTER (CLR)

Janelle Kuter  
17/240 Queen St  
Brisbane QLD 4000

Transaction ID: 49391734                      EMR Site Id:                      01 October 2013  
Cheque Number:  
Client Reference:

This response relates to a search request received for the site:  
Lot: 1                      Plan: RP904445  
BROADMEADOWS Road  
MORANBAH

**EMR RESULT**

The above site is NOT included on the Environmental Management Register.

**CLR RESULT**

The above site is NOT included on the Contaminated Land Register.

**ADDITIONAL ADVICE**

**From the 1st August 2012, the price of an EMR/CLR search will increase to \$41.55 per lot for internet based searches and \$48.85 per lot for EMR/CLR searches done by means other than the internet.**

If you have any queries in relation to this search please phone 13QGOV (13 74 68)

**Registrar  
Administering Authority**



Department of Environment and Heritage Protection (EHP)  
ABN 46 640 294 485  
400 George St Brisbane, Queensland 4000  
GPO Box 2454, Brisbane QLD 4001, AUSTRALIA  
www.ehp.qld.gov.au

**SEARCH RESPONSE**  
**ENVIRONMENTAL MANAGEMENT REGISTER (EMR)**  
**CONTAMINATED LAND REGISTER (CLR)**

Janelle Kuter  
17/240 Queen St  
Brisbane QLD 4000

Transaction ID: 49391733                      EMR Site Id: 27506                      01 October 2013  
Client Reference:  
Cheque Number:

This response relates to a search request received for the site:  
Lot: 2                      Plan: CP907954

This response relates to a search request received for the site:  
Lot: 2                      Plan: CP907954  
Address:                      GOONGELLA ROAD  
   MORANBAH 4744

The site has been subject to the following Notifiable Activity pursuant to section 374 of the *Environmental Protection Act 1994*.

**MINE WASTES** -

- (a) storing hazardous mine or exploration wastes, including, for example, tailings dams, overburden or waste rock dumps containing hazardous contaminants; or
- (b) exploring for, or mining or processing, minerals in a way that exposes faces, or releases groundwater, containing hazardous contaminants.

While sites are listed on the EMR using the lot and plan description, a mining lease may affect only a limited area of the lot. In many instances with rural properties, only a small area may be potentially affected by the mining activities and the ongoing landuse is unaffected. More detailed information relating to the location of the mining activities may be held by the Department of Environment and Resource Management or the Department of Employment, Economic Development and Innovation.

**PETROLEUM PRODUCT OR OIL STORAGE** - storing petroleum products or oil -

- (a) in underground tanks with more than 200L capacity; or
- (b) in above ground tanks with -
  - (i) for petroleum products or oil in class 3 in packaging groups 1 and 2 of the dangerous goods code - more than 2, 500L capacity; or
  - (ii) for petroleum products or oil in class 3 in packaging groups 3 of the dangerous goods code - more than 5, 000L capacity; or
  - (iii) for petroleum products that are combustible liquids in class C1 or C2 in Australian Standard AS1940, 'The storage and handling of flammable and combustible liquids' published by Standards Australia - more than 25, 000L capacity.

**ABRASIVE BLASTING** - carrying out abrasive blast cleaning (other than cleaning carried out in fully enclosed booths) or disposing of abrasive blasting material.

**CHEMICAL STORAGE** - (other than petroleum products or oil under item 29) - storing more than 10 t of chemicals (other than compressed or liquefied gases) that are dangerous goods under the dangerous goods code.

**CLR RESULT**

The above site is NOT included on the Contaminated Land Register.

**ADDITIONAL ADVICE**

**From the 1st August 2012, the price of an EMR/CLR search will increase to \$41.55 per lot for internet based searches and \$48.85 per lot for EMR/CLR searches done by means other than the internet.**

If you have any queries in relation to this search please phone 13QGOV (13 74 68)

**Registrar  
Administering Authority**



**QLD ENVIRONMENTAL PROTECTION AGENCY**

**ENVIRONMENTAL MANAGEMENT REGISTER (EMR)  
CONTAMINATED LAND REGISTER (CLR)**

Transaction ID: 945454 EMR Site Id: 12 June 2007

This response relates to a search request received for the site:

Lot: 2 Plan: RP617822

**EMR RESULT**

The above site is NOT included on the Environmental Management Register.

**CLR RESULT**

The above site is NOT included on the Contaminated Land Register.

**ADDITIONAL ADVICE**

**Note: Searches may be conducted online through the State Government Website [www.smartservice.qld.gov.au](http://www.smartservice.qld.gov.au) or Citec Confirm [www.confirm.com.au](http://www.confirm.com.au).**

If you have any queries in relation to this search please phone (07) 3227 7370.

Lindi Bowen  
**Registrar, Contaminated Land Unit**

C2 Logo



**Search Receipt**

Date/Time (AEST) 12-Jun-2007 02:11:42 PM

Account 2007-0476



Department of Environment and Heritage Protection (EHP)  
ABN 46 640 294 485  
400 George St Brisbane, Queensland 4000  
GPO Box 2454, Brisbane QLD 4001, AUSTRALIA  
www.ehp.qld.gov.au

**SEARCH RESPONSE**  
**ENVIRONMENTAL MANAGEMENT REGISTER (EMR)**  
**CONTAMINATED LAND REGISTER (CLR)**

Janelle Kuter  
17/240 Queen St  
Brisbane QLD 4000

Transaction ID: 49391732                      EMR Site Id: 43450                      01 October 2013  
Client Reference:  
Cheque Number:

This response relates to a search request received for the site:  
Lot: 2                      Plan: SP138791

This response relates to a search request received for the site:  
Lot: 2                      Plan: SP138791  
Address:                      BROADMEADOWS ROAD  
   MORANBAH 4744

The site has been subject to the following Notifiable Activity pursuant to section 374 of the *Environmental Protection Act 1994*.

**MINE WASTES -**

- (a) storing hazardous mine or exploration wastes, including, for example, tailings dams, overburden or waste rock dumps containing hazardous contaminants; or
- (b) exploring for, or mining or processing, minerals in a way that exposes faces, or releases groundwater, containing hazardous contaminants.

While sites are listed on the EMR using the lot and plan description, a mining lease may affect only a limited area of the lot. In many instances with rural properties, only a small area may be potentially affected by the mining activities and the ongoing landuse is unaffected. More detailed information relating to the location of the mining activities may be held by the Department of Environment and Resource Management or the Department of Employment, Economic Development and Innovation.

**CLR RESULT**

The above site is NOT included on the Contaminated Land Register.

**ADDITIONAL ADVICE**

**From the 1st August 2012, the price of an EMR/CLR search will increase to \$41.55 per lot for internet based searches and \$48.85 per lot for EMR/CLR searches done by means other than the internet.**

If you have any queries in relation to this search please phone 13QGOV (13 74 68)

**Registrar**

**QLD ENVIRONMENTAL PROTECTION AGENCY****ENVIRONMENTAL MANAGEMENT REGISTER (EMR)  
CONTAMINATED LAND REGISTER (CLR)**

Transaction ID: 1117748      EMR Site Id: 16 March 2009  
This response relates to a search request received for the site:  
Lot: 3      Plan: GV54

**EMR RESULT**

The above site is NOT included on the Environmental Management Register.

**CLR RESULT**

The above site is NOT included on the Contaminated Land Register.

**ADDITIONAL ADVICE**

**EMR/CLR Searches may be conducted online through the State Government Website [www.smartservice.qld.gov.au](http://www.smartservice.qld.gov.au) or Citec Confirm [www.confirm.com.au](http://www.confirm.com.au).**

If you have any queries in relation to this search please phone (07) 3227 7370.

Lindi Bowen  
**Registrar, Contaminated Land Unit**



Department of Environment and Heritage Protection (EHP)  
ABN 46 640 294 485  
400 George St Brisbane, Queensland 4000  
GPO Box 2454, Brisbane QLD 4001, AUSTRALIA  
www.ehp.qld.gov.au

**SEARCH RESPONSE**  
**ENVIRONMENTAL MANAGEMENT REGISTER (EMR)**  
**CONTAMINATED LAND REGISTER (CLR)**

Janelle Kuter  
17/240 Queen St  
Brisbane QLD 4000

Transaction ID: 49391730                      EMR Site Id: 43448                      01 October 2013  
Client Reference:  
Cheque Number:

This response relates to a search request received for the site:  
Lot: 3                      Plan: RP852526

This response relates to a search request received for the site:  
Lot: 3                      Plan: RP852526  
Address:                      MABBIN ROAD  
   MORANBAH 4744

The site has been subject to the following Notifiable Activity pursuant to section 374 of the *Environmental Protection Act 1994*.

**MINE WASTES -**

- (a) storing hazardous mine or exploration wastes, including, for example, tailings dams, overburden or waste rock dumps containing hazardous contaminants; or
- (b) exploring for, or mining or processing, minerals in a way that exposes faces, or releases groundwater, containing hazardous contaminants.

While sites are listed on the EMR using the lot and plan description, a mining lease may affect only a limited area of the lot. In many instances with rural properties, only a small area may be potentially affected by the mining activities and the ongoing landuse is unaffected. More detailed information relating to the location of the mining activities may be held by the Department of Environment and Resource Management or the Department of Employment, Economic Development and Innovation.

**CLR RESULT**

The above site is NOT included on the Contaminated Land Register.

**ADDITIONAL ADVICE**

**From the 1st August 2012, the price of an EMR/CLR search will increase to \$41.55 per lot for internet based searches and \$48.85 per lot for EMR/CLR searches done by means other than the internet.**

If you have any queries in relation to this search please phone 13QGOV (13 74 68)

**Registrar**



Department of Environment and Heritage Protection (EHP)  
ABN 46 640 294 485  
400 George St Brisbane, Queensland 4000  
GPO Box 2454, Brisbane QLD 4001, AUSTRALIA  
www.ehp.qld.gov.au

**SEARCH RESPONSE**  
**ENVIRONMENTAL MANAGEMENT REGISTER (EMR)**  
**CONTAMINATED LAND REGISTER (CLR)**

Janelle Kuter  
17/240 Queen St  
Brisbane QLD 4000

Transaction ID: 49391731                      EMR Site Id: 01 October 2013  
Cheque Number:  
Client Reference:

This response relates to a search request received for the site:  
Lot: 3                      Plan: CP907954

MORANBAH

**EMR RESULT**

The above site is NOT included on the Environmental Management Register.

**CLR RESULT**

The above site is NOT included on the Contaminated Land Register.

**ADDITIONAL ADVICE**

**From the 1st August 2012, the price of an EMR/CLR search will increase to \$41.55 per lot for internet based searches and \$48.85 per lot for EMR/CLR searches done by means other than the internet.**

If you have any queries in relation to this search please phone 13QGOV (13 74 68)

**Registrar**  
**Administering Authority**

**QLD DEPARTMENT OF ENVIRONMENT AND RESOURCE MANAGEMENT****ENVIRONMENTAL MANAGEMENT REGISTER (EMR)  
CONTAMINATED LAND REGISTER (CLR)**

Transaction ID: 1324854 EMR Site Id: 85674 21 June 2011  
This response relates to a search request received for the site:  
Lot: 3 Plan: SP199176

**EMR RESULT**

The above site IS included on the Environmental Management Register.

The site you have searched has been subdivided from the following site, which is included on the EMR. Subdivided new parcels will remain on the EMR unless it can be shown that they are not located near the contaminating activity.

Lot: 1 Plan: GV334  
Address: RED HILL ROAD  
BELYANDO 4721

The site has been subject to the following Notifiable Activity pursuant to section 374 of the *Environmental Protection Act 1994*.

**MINE WASTES -**

- (a) storing hazardous mine or exploration wastes, including, for example, tailings dams, overburden or waste rock dumps containing hazardous contaminants; or
- (b) exploring for, or mining or processing, minerals in a way that exposes faces, or releases groundwater, containing hazardous contaminants.

While sites are listed on the EMR using the lot and plan description, a mining lease may affect only a limited area of the lot. In many instances with rural properties, only a small area may be potentially affected by the mining activities and the ongoing landuse is unaffected. More detailed information relating to the location of the mining activities may be held by the Department of Environment and Resource Management or the Department of Employment, Economic Development and Innovation.

**PETROLEUM PRODUCT OR OIL STORAGE - storing petroleum products or oil -**

- (a) in underground tanks with more than 200L capacity; or
- (b) in above ground tanks with -
  - for petroleum products or oil in class 3 in packaging groups 1 and 2 of the dangerous goods code - more than 2, 500L capacity; or
  - for petroleum products or oil in class 3 in packaging groups 3 of the dangerous goods code - more than 5, 000L capacity; or
  - for petroleum products that are combustible liquids in class C1 or C2 in Australian Standard AS1940, 'The storage and handling of flammable and combustible liquids' published by Standards Australia - more than 25, 000L capacity.

**LIVESTOCK DIP OR SPRAY RACE - operating a livestock dip or spray race facility.**

For the majority of rural properties only a small area may be affected by the chemicals used in livestock dips and spray races. The Department of Environment and Resource Management may hold further information relating to the location of the dip site within this

property.

### **CLR RESULT**

The above site is NOT included on the Contaminated Land Register.

### **ADDITIONAL ADVICE**

**EMR/CLR Searches may be conducted online through  
[www.smartservice.qld.gov.au](http://www.smartservice.qld.gov.au) or Citec Confirm [www.confirm.com.au](http://www.confirm.com.au).**

If you have any queries in relation to this search please phone (07) 3330 5685.

Darryl Byers  
**Registrar, Contaminated Land Unit**

**QLD ENVIRONMENTAL PROTECTION AGENCY**  
**ENVIRONMENTAL MANAGEMENT REGISTER (EMR)**  
**CONTAMINATED LAND REGISTER (CLR)**

Transaction ID: 945429 EMR Site Id: 12 June 2007  
This response relates to a search request received for the site:  
Lot: 4 Plan: GV174

**EMR RESULT**

The above site is NOT included on the Environmental Management Register.

**CLR RESULT**

The above site is NOT included on the Contaminated Land Register.

**ADDITIONAL ADVICE**

**Note: Searches may be conducted online through the State Government Website [www.smartservice.qld.gov.au](http://www.smartservice.qld.gov.au) or Citec Confirm [www.confirm.com.au](http://www.confirm.com.au).**

If you have any queries in relation to this search please phone (07) 3227 7370.

Lindi Bowen  
**Registrar, Contaminated Land Unit**

C2 Logo



**Search Receipt**

Date/Time (AEST) 12-Jun-2007 02:03:56 PM  
Account 2007-0476



**QLD ENVIRONMENTAL PROTECTION AGENCY**

**ENVIRONMENTAL MANAGEMENT REGISTER (EMR)  
CONTAMINATED LAND REGISTER (CLR)**

Transaction ID: 945462 EMR Site Id: 12 June 2007

This response relates to a search request received for the site:

Lot: 4 Plan: RP617820

**EMR RESULT**

The above site is NOT included on the Environmental Management Register.

**CLR RESULT**

The above site is NOT included on the Contaminated Land Register.

**ADDITIONAL ADVICE**

**Note: Searches may be conducted online through the State Government Website [www.smartservice.qld.gov.au](http://www.smartservice.qld.gov.au) or Citec Confirm [www.confirm.com.au](http://www.confirm.com.au).**

If you have any queries in relation to this search please phone (07) 3227 7370.

Lindi Bowen  
**Registrar, Contaminated Land Unit**

C2 Logo



**Search Receipt**

Date/Time (AEST) 12-Jun-2007 02:14:29 PM

Account 2007-0476

**QLD ENVIRONMENTAL PROTECTION AGENCY**

**ENVIRONMENTAL MANAGEMENT REGISTER (EMR)  
CONTAMINATED LAND REGISTER (CLR)**

Transaction ID: 945462 EMR Site Id: 12 June 2007

This response relates to a search request received for the site:

Lot: 4 Plan: RP617820

**EMR RESULT**

The above site is NOT included on the Environmental Management Register.

**CLR RESULT**

The above site is NOT included on the Contaminated Land Register.

**ADDITIONAL ADVICE**

**Note: Searches may be conducted online through the State Government Website [www.smartservice.qld.gov.au](http://www.smartservice.qld.gov.au) or Citec Confirm [www.confirm.com.au](http://www.confirm.com.au).**

If you have any queries in relation to this search please phone (07) 3227 7370.

Lindi Bowen  
**Registrar, Contaminated Land Unit**

C2 Logo



**Search Receipt**

Date/Time (AEST) 12-Jun-2007 02:14:29 PM

Account 2007-0476



Department of Environment and Heritage Protection (EHP)  
ABN 46 640 294 485  
400 George St Brisbane, Queensland 4000  
GPO Box 2454, Brisbane QLD 4001, AUSTRALIA  
www.ehp.qld.gov.au

**SEARCH RESPONSE**  
**ENVIRONMENTAL MANAGEMENT REGISTER (EMR)**  
**CONTAMINATED LAND REGISTER (CLR)**

Janelle Kuter  
17/240 Queen St  
Brisbane QLD 4000

Transaction ID: 49391729                      EMR Site Id: 01 October 2013  
Cheque Number:  
Client Reference:

This response relates to a search request received for the site:  
Lot: 4                      Plan: SP174465

MORANBAH

**EMR RESULT**

The above site is NOT included on the Environmental Management Register.

**CLR RESULT**

The above site is NOT included on the Contaminated Land Register.

**ADDITIONAL ADVICE**

**From the 1st August 2012, the price of an EMR/CLR search will increase to \$41.55 per lot for internet based searches and \$48.85 per lot for EMR/CLR searches done by means other than the internet.**

If you have any queries in relation to this search please phone 13QGOV (13 74 68)

**Registrar**  
**Administering Authority**

**QLD ENVIRONMENTAL PROTECTION AGENCY**  
**ENVIRONMENTAL MANAGEMENT REGISTER (EMR)**  
**CONTAMINATED LAND REGISTER (CLR)**

Transaction ID: 859743 EMR Site Id: 43445 01 September 2006  
This response relates to a search request received for the site:  
Lot: 5 Plan: RP852533

**EMR RESULT**

The above site IS included on the Environmental Management Register.  
Lot: 5 Plan: RP852533  
Address: MABBIN ROAD  
MORANBAH 4744

The site has been subject to the following Notifiable Activity pursuant to section 374 of the *Environmental Protection Act 1994*.

LANDFILL - disposing of waste (excluding inert construction and demolition waste).

PETROLEUM PRODUCT OR OIL STORAGE - storing petroleum products or oil -

(a) in underground tanks with more than 200L capacity; or

(b) in above ground tanks with -

(i) for petroleum products or oil in class 3 in packaging groups 1 and 2 of the dangerous goods code - more than 2,500L capacity; or

(ii) for petroleum products or oil in class 3 in packaging groups 3 of the dangerous goods code - more than 5,000L capacity; or

(iii) for petroleum products that are combustible liquids in class C1 or C2 in Australian Standard AS1940, 'The storage and handling of flammable and combustible liquids' published by Standards Australia - more than 25,000L capacity.

MINE WASTES -

(a) storing hazardous mine or exploration wastes, including, for example, tailings dams, overburden or waste rock dumps containing hazardous contaminants; or

(b) exploring for, or mining or processing, minerals in a way that exposes faces, or releases groundwater, containing hazardous contaminants.

While sites are listed on the EMR using the lot and plan description, a mining lease may affect only a limited area of the lot. In many instances with rural properties, only a small area may be potentially affected by the mining activities and the ongoing landuse is unaffected. More detailed information relating to the location of the mining activities may be held by the EPA or the Department of Natural Resources and Mines.

**CLR RESULT**

The above site is NOT included on the Contaminated Land Register.

**ADDITIONAL ADVICE**

**Note: Searches may be conducted online through the State Government Website**

**QLD ENVIRONMENTAL PROTECTION AGENCY**  
**ENVIRONMENTAL MANAGEMENT REGISTER (EMR)**  
**CONTAMINATED LAND REGISTER (CLR)**

Transaction ID: 945440 EMR Site Id: 12 June 2007  
This response relates to a search request received for the site:  
Lot: 9 Plan: GV126

**EMR RESULT**

The above site is NOT included on the Environmental Management Register.

**CLR RESULT**

The above site is NOT included on the Contaminated Land Register.

**ADDITIONAL ADVICE**

**Note: Searches may be conducted online through the State Government Website [www.smartservice.qld.gov.au](http://www.smartservice.qld.gov.au) or Citec Confirm [www.confirm.com.au](http://www.confirm.com.au).**

If you have any queries in relation to this search please phone (07) 3227 7370.

Lindi Bowen  
**Registrar, Contaminated Land Unit**

C2 Logo



**Search Receipt**

Date/Time (AEST) 12-Jun-2007 02:07:09 PM  
Account 2007-0476



Department of Environment and Heritage Protection (EHP)  
ABN 46 640 294 485  
400 George St Brisbane, Queensland 4000  
GPO Box 2454, Brisbane QLD 4001, AUSTRALIA  
www.ehp.qld.gov.au

**SEARCH RESPONSE**  
**ENVIRONMENTAL MANAGEMENT REGISTER (EMR)**  
**CONTAMINATED LAND REGISTER (CLR)**

Janelle Kuter  
17/240 Queen St  
Brisbane QLD 4000

Transaction ID: 49391727                      EMR Site Id:                      01 October 2013  
Cheque Number:  
Client Reference:

This response relates to a search request received for the site:  
Lot: 10              Plan: SP235905

**UNABLE TO VALIDATE (SEARCH MAY STILL PROCEED)**  
**EMR RESULT**

The above site is NOT included on the Environmental Management Register.

**CLR RESULT**

The above site is NOT included on the Contaminated Land Register.

**ADDITIONAL ADVICE**

**From the 1st August 2012, the price of an EMR/CLR search will increase to \$41.55 per lot for internet based searches and \$48.85 per lot for EMR/CLR searches done by means other than the internet.**

If you have any queries in relation to this search please phone 13QGOV (13 74 68)

**Registrar**  
**Administering Authority**



Department of Environment and Heritage Protection (EHP)  
ABN 46 640 294 485  
400 George St Brisbane, Queensland 4000  
GPO Box 2454, Brisbane QLD 4001, AUSTRALIA  
www.ehp.qld.gov.au

**SEARCH RESPONSE**  
**ENVIRONMENTAL MANAGEMENT REGISTER (EMR)**  
**CONTAMINATED LAND REGISTER (CLR)**

Janelle Kuter  
17/240 Queen St  
Brisbane QLD 4000

Transaction ID: 49392099                      EMR Site Id: 101487                      02 October  
2013  
Client Reference:  
Cheque Number:

This response relates to a search request received for the site:  
Lot: 10                      Plan: SP235299

This response relates to a search request received for the site:  
The site you have searched has been subdivided from the following site, which is included on the EMR.  
Subdivided new parcels will remain on the EMR unless it can be shown that they are not located near the  
contaminating activity.

Lot: 10                      Plan: GV52  
Address:                      MABBIN ROAD  
MORANBAH QLD 4744

The site has been subject to the following Notifiable Activity pursuant to section 374 of the  
*Environmental Protection Act 1994*.

LANDFILL - disposing of waste (excluding inert construction and demolition waste).

MINE WASTES -

- (a) storing hazardous mine or exploration wastes, including, for example, tailings dams, overburden or waste rock dumps containing hazardous contaminants; or
- (b) exploring for, or mining or processing, minerals in a way that exposes faces, or releases groundwater, containing hazardous contaminants.

While sites are listed on the EMR using the lot and plan description, a mining lease may affect only a limited area of the lot. In many instances with rural properties, only a small area may be potentially affected by the mining activities and the ongoing landuse is unaffected. More detailed information relating to the location of the mining activities may be held by the Department of Environment and Resource Management or the Department of Employment, Economic Development and Innovation.

**CLR RESULT**

The above site is NOT included on the Contaminated Land Register.

**ADDITIONAL ADVICE**

**From the 1st August 2012, the price of an EMR/CLR search will increase to \$41.55 per lot for internet based searches and \$48.85 per lot for EMR/CLR searches done by means other than the**

**internet.**

If you have any queries in relation to this search please phone 13QGOV (13 74 68)

**Registrar  
Administering Authority**



**QLD ENVIRONMENTAL PROTECTION AGENCY**  
**ENVIRONMENTAL MANAGEMENT REGISTER (EMR)**  
**CONTAMINATED LAND REGISTER (CLR)**

Transaction ID: 859747 EMR Site Id: 01 September 2006  
This response relates to a search request received for the site:  
Lot: 12 Plan: GV213

**EMR RESULT**

The above site is NOT included on the Environmental Management Register.

**CLR RESULT**

The above site is NOT included on the Contaminated Land Register.

**ADDITIONAL ADVICE**

**Note: Searches may be conducted online through the State Government Website [www.smartservice.qld.gov.au](http://www.smartservice.qld.gov.au) or Citec Confirm [www.confirm.com.au](http://www.confirm.com.au).**

**Alternatively, searches may be posted to Smart Service Queensland (Contaminated Land Search, PO Box 10817, Brisbane Adelaide Street, Queensland 4001) or fax (07) 3 405 0965 or 1300 300 768.**

**If you have any queries in relation to this search please phone (07) 3227 7370.**

**Lindi Bowen**  
**Registrar, Contaminated Land Unit**



Department of Environment and Heritage Protection (EHP)  
ABN 46 640 294 485  
400 George St Brisbane, Queensland 4000  
GPO Box 2454, Brisbane QLD 4001, AUSTRALIA  
www.ehp.qld.gov.au

**SEARCH RESPONSE**  
**ENVIRONMENTAL MANAGEMENT REGISTER (EMR)**  
**CONTAMINATED LAND REGISTER (CLR)**

Janelle Kuter  
17/240 Queen St  
Brisbane QLD 4000

Transaction ID: 49391726                      EMR Site Id: 31864                      01 October 2013  
Client Reference:  
Cheque Number:

This response relates to a search request received for the site:  
Lot: 14              Plan: CP846391

This response relates to a search request received for the site:  
Lot: 14              Plan: CP846391  
Address:              MABBIN ROAD  
                                 BELYANDO 4721

The site has been subject to the following Notifiable Activity pursuant to section 374 of the *Environmental Protection Act 1994*.  
LANDFILL - disposing of waste (excluding inert construction and demolition waste).

**CLR RESULT**

The above site is NOT included on the Contaminated Land Register.

**ADDITIONAL ADVICE**

**From the 1st August 2012, the price of an EMR/CLR search will increase to \$41.55 per lot for internet based searches and \$48.85 per lot for EMR/CLR searches done by means other than the internet.**

If you have any queries in relation to this search please phone 13QGOV (13 74 68)

**Registrar**  
**Administering Authority**



Department of Environment and Heritage Protection (EHP)  
ABN 46 640 294 485  
400 George St Brisbane, Queensland 4000  
GPO Box 2454, Brisbane QLD 4001, AUSTRALIA  
www.ehp.qld.gov.au

**SEARCH RESPONSE**  
**ENVIRONMENTAL MANAGEMENT REGISTER (EMR)**  
**CONTAMINATED LAND REGISTER (CLR)**

Janelle Kuter  
17/240 Queen St  
Brisbane QLD 4000

Transaction ID: 49391725                      EMR Site Id:                      01 October 2013  
Cheque Number:  
Client Reference:

This response relates to a search request received for the site:  
Lot: 16              Plan: GV313  
BROADMEADOWS Road  
MORANBAH

**EMR RESULT**

The above site is NOT included on the Environmental Management Register.

**CLR RESULT**

The above site is NOT included on the Contaminated Land Register.

**ADDITIONAL ADVICE**

**From the 1st August 2012, the price of an EMR/CLR search will increase to \$41.55 per lot for internet based searches and \$48.85 per lot for EMR/CLR searches done by means other than the internet.**

If you have any queries in relation to this search please phone 13QGOV (13 74 68)

**Registrar**  
**Administering Authority**



Department of Environment and Heritage Protection (EHP)  
ABN 46 640 294 485  
400 George St Brisbane, Queensland 4000  
GPO Box 2454, Brisbane QLD 4001, AUSTRALIA  
www.ehp.qld.gov.au

**SEARCH RESPONSE**  
**ENVIRONMENTAL MANAGEMENT REGISTER (EMR)**  
**CONTAMINATED LAND REGISTER (CLR)**

Janelle Kuter  
17/240 Queen St  
Brisbane QLD 4000

Transaction ID: 49391724                      EMR Site Id: 101495                      01 October  
2013  
Client Reference:  
Cheque Number:

This response relates to a search request received for the site:  
Lot: 16                      Plan: SP235299

This response relates to a search request received for the site:  
The site you have searched has been subdivided from the following site, which is included on the EMR.  
Subdivided new parcels will remain on the EMR unless it can be shown that they are not located near the  
contaminating activity.

Lot: 16                      Plan: SP230330  
Address:                      MABBIN ROAD  
MORANBAH 4744

The site has been subject to the following Notifiable Activity pursuant to section 374 of the  
*Environmental Protection Act 1994*.

**MINE WASTES -**

- (a) storing hazardous mine or exploration wastes, including, for example, tailings dams, overburden or waste rock dumps containing hazardous contaminants; or
- (b) exploring for, or mining or processing, minerals in a way that exposes faces, or releases groundwater, containing hazardous contaminants.

While sites are listed on the EMR using the lot and plan description, a mining lease may affect only a limited area of the lot. In many instances with rural properties, only a small area may be potentially affected by the mining activities and the ongoing landuse is unaffected. More detailed information relating to the location of the mining activities may be held by the Department of Environment and Resource Management or the Department of Employment, Economic Development and Innovation.

**CLR RESULT**

The above site is NOT included on the Contaminated Land Register.

**ADDITIONAL ADVICE**

**From the 1st August 2012, the price of an EMR/CLR search will increase to \$41.55 per lot for internet based searches and \$48.85 per lot for EMR/CLR searches done by means other than the internet.**

If you have any queries in relation to this search please phone 13QGOV (13 74 68)

**Registrar**  
**Administering Authority**

**QLD DEPARTMENT OF ENVIRONMENT AND RESOURCE MANAGEMENT****ENVIRONMENTAL MANAGEMENT REGISTER (EMR)  
CONTAMINATED LAND REGISTER (CLR)**

Transaction ID: 1324859 EMR Site Id: 80582 21 June 2011  
This response relates to a search request received for the site:  
Lot: 18 Plan: SP208194

**EMR RESULT**

The above site IS included on the Environmental Management Register.  
The site you have searched has been subdivided from the following site, which is included on the EMR. Subdivided new parcels will remain on the EMR unless it can be shown that they are not located near the contaminating activity.

Lot: 1 Plan: CP907954  
Address: BROADMEADOWS ROAD  
BELYANDO 4721

The site has been subject to the following Notifiable Activity pursuant to section 374 of the *Environmental Protection Act 1994*.

PETROLEUM PRODUCT OR OIL STORAGE - storing petroleum products or oil -

(a) in underground tanks with more than 200L capacity; or

(b) in above ground tanks with -

for petroleum products or oil in class 3 in packaging groups 1 and 2 of the dangerous goods code - more than 2, 500L capacity; or

for petroleum products or oil in class 3 in packaging groups 3 of the dangerous goods code - more than 5, 000L capacity; or

for petroleum products that are combustible liquids in class C1 or C2 in Australian Standard AS1940, 'The storage and handling of flammable and combustible liquids' published by Standards Australia - more than 25, 000L capacity.

**CLR RESULT**

The above site is NOT included on the Contaminated Land Register.

**ADDITIONAL ADVICE**

**EMR/CLR Searches may be conducted online through  
[www.smartservice.qld.gov.au](http://www.smartservice.qld.gov.au) or Citec Confirm [www.confirm.com.au](http://www.confirm.com.au).**

If you have any queries in relation to this search please phone (07) 3330 5685.

Darryl Byers  
**Registrar, Contaminated Land Unit**

**QLD ENVIRONMENTAL PROTECTION AGENCY**  
**ENVIRONMENTAL MANAGEMENT REGISTER (EMR)**  
**CONTAMINATED LAND REGISTER (CLR)**

Transaction ID: 859823 EMR Site Id: 54177 01 September 2006  
This response relates to a search request received for the site:  
Lot: 19 Plan: SP156188

**EMR RESULT**

The above site IS included on the Environmental Management Register.  
The site you have searched has been subdivided from the following site, which is included on the EMR. Subdivided new parcels will remain on the EMR unless it can be shown that they are not located near the contaminating activity.

Lot: 1 Plan: CP907954  
Address: BROADMEADOWS ROAD  
BELYANDO 4721

The site has been subject to the following Notifiable Activity pursuant to section 374 of the *Environmental Protection Act 1994*.

PETROLEUM PRODUCT OR OIL STORAGE - storing petroleum products or oil -

(a) in underground tanks with more than 200L capacity; or

(b) in above ground tanks with -

(i) for petroleum products or oil in class 3 in packaging groups 1 and 2 of the dangerous goods code - more than 2, 500L capacity; or

(ii) for petroleum products or oil in class 3 in packaging groups 3 of the dangerous goods code - more than 5, 000L capacity; or

(iii) for petroleum products that are combustible liquids in class C1 or C2 in Australian Standard AS1940, 'The storage and handling of flammable and combustible liquids' published by Standards Australia - more than 25, 000L capacity.

**CLR RESULT**

The above site is NOT included on the Contaminated Land Register.

**ADDITIONAL ADVICE**

**Note: Searches may be conducted online through the State Government Website [www.smartservice.qld.gov.au](http://www.smartservice.qld.gov.au) or Citec Confirm [www.confirm.com.au](http://www.confirm.com.au).**

**Alternatively, searches may be posted to Smart Service Queensland (Contaminated Land Search, PO Box 10817, Brisbane Adelaide Street, Queensland 4001) or fax (07) 3 405 0965 or 1300 300 768.**

**If you have any queries in relation to this search please phone (07) 3227 7370.**



Department of Environment and Heritage Protection (EHP)  
ABN 46 640 294 485  
400 George St Brisbane, Queensland 4000  
GPO Box 2454, Brisbane QLD 4001, AUSTRALIA  
www.ehp.qld.gov.au

**SEARCH RESPONSE**  
**ENVIRONMENTAL MANAGEMENT REGISTER (EMR)**  
**CONTAMINATED LAND REGISTER (CLR)**

Janelle Kuter  
17/240 Queen St  
Brisbane QLD 4000

Transaction ID: 49391722                      EMR Site Id: 118962                      01 October  
2013  
Client Reference:  
Cheque Number:

This response relates to a search request received for the site:  
Lot: 41                      Plan: SP235904

This response relates to a search request received for the site:  
The site you have searched has been subdivided from the following site, which is included on the EMR.  
Subdivided new parcels will remain on the EMR unless it can be shown that they are not located near the  
contaminating activity.

Lot: 1                      Plan: GV334  
Address: RED HILL ROAD  
BELYANDO 4721

The site has been subject to the following Notifiable Activity pursuant to section 374 of the  
*Environmental Protection Act 1994*.

**MINE WASTES -**

- (a) storing hazardous mine or exploration wastes, including, for example, tailings dams, overburden or waste rock dumps containing hazardous contaminants; or
- (b) exploring for, or mining or processing, minerals in a way that exposes faces, or releases groundwater, containing hazardous contaminants.

While sites are listed on the EMR using the lot and plan description, a mining lease may affect only a limited area of the lot. In many instances with rural properties, only a small area may be potentially affected by the mining activities and the ongoing landuse is unaffected. More detailed information relating to the location of the mining activities may be held by the Department of Environment and Resource Management or the Department of Employment, Economic Development and Innovation.

**PETROLEUM PRODUCT OR OIL STORAGE - storing petroleum products or oil -**

- (a) in underground tanks with more than 200L capacity; or
- (b) in above ground tanks with -
  - (i) for petroleum products or oil in class 3 in packaging groups 1 and 2 of the dangerous goods code - more than 2, 500L capacity; or
  - (ii) for petroleum products or oil in class 3 in packaging groups 3 of the dangerous goods code - more than 5, 000L capacity; or
  - (iii) for petroleum products that are combustible liquids in class C1 or C2 in Australian Standard AS1940, 'The storage and handling of flammable and combustible liquids' published by Standards Australia - more than 25, 000L capacity.

**LIVESTOCK DIP OR SPRAY RACE - operating a livestock dip or spray race facility.**

For the majority of rural properties only a small area may be affected by the chemicals used in livestock



dips and spray races. The Department of Environment and Heritage Protection may hold further information relating to the location of the dip site within this property.

### **CLR RESULT**

The above site is NOT included on the Contaminated Land Register.

### **ADDITIONAL ADVICE**

**From the 1st August 2012, the price of an EMR/CLR search will increase to \$41.55 per lot for internet based searches and \$48.85 per lot for EMR/CLR searches done by means other than the internet.**

If you have any queries in relation to this search please phone 13QGOV (13 74 68)

**Registrar  
Administering Authority**



Department of Environment and Heritage Protection (EHP)  
ABN 46 640 294 485  
400 George St Brisbane, Queensland 4000  
GPO Box 2454, Brisbane QLD 4001, AUSTRALIA  
www.ehp.qld.gov.au

**SEARCH RESPONSE**  
**ENVIRONMENTAL MANAGEMENT REGISTER (EMR)**  
**CONTAMINATED LAND REGISTER (CLR)**

Janelle Kuter  
17/240 Queen St  
Brisbane QLD 4000

Transaction ID: 49391721                      EMR Site Id: 94960                      01 October 2013  
Client Reference:  
Cheque Number:

This response relates to a search request received for the site:  
Lot: 172                      Plan: SP237593

This response relates to a search request received for the site:  
The site you have searched has been subdivided from the following site, which is included on the EMR.  
Subdivided new parcels will remain on the EMR unless it can be shown that they are not located near the  
contaminating activity.

Lot: 6                      Plan: RP619487  
Address:                      MABBIN ROAD  
MORANBAH 4744

The site has been subject to the following Notifiable Activity pursuant to section 374 of the  
*Environmental Protection Act 1994*.

**PETROLEUM PRODUCT OR OIL STORAGE** - storing petroleum products or oil -

(a) in underground tanks with more than 200L capacity; or

(b) in above ground tanks with -

(i) for petroleum products or oil in class 3 in packaging groups 1 and 2 of the dangerous goods code - more than 2,  
500L capacity; or

(ii) for petroleum products or oil in class 3 in packaging groups 3 of the dangerous goods code - more than 5, 000L  
capacity; or

(iii) for petroleum products that are combustible liquids in class C1 or C2 in Australian Standard AS1940, 'The  
storage and handling of flammable and combustible liquids' published by Standards Australia - more than 25, 000L capacity.

**CLR RESULT**

The above site is NOT included on the Contaminated Land Register.

**ADDITIONAL ADVICE**

**From the 1st August 2012, the price of an EMR/CLR search will increase to \$41.55 per lot for internet based searches and \$48.85 per lot for EMR/CLR searches done by means other than the internet.**

If you have any queries in relation to this search please phone 13QGOV (13 74 68)

**Registrar  
Administering Authority**



Department of Environment and Heritage Protection (EHP)  
ABN 46 640 294 485  
400 George St Brisbane, Queensland 4000  
GPO Box 2454, Brisbane QLD 4001, AUSTRALIA  
www.ehp.qld.gov.au

**SEARCH RESPONSE**  
**ENVIRONMENTAL MANAGEMENT REGISTER (EMR)**  
**CONTAMINATED LAND REGISTER (CLR)**

Janelle Kuter  
17/240 Queen St  
Brisbane QLD 4000

Transaction ID: 49391720                      EMR Site Id: 118551                      01 October  
2013  
Client Reference:  
Cheque Number:

This response relates to a search request received for the site:  
Lot: 200                      Plan: SP259127

**SEARCH RESULT**

The site you have searched is a lot resulting from the amalgamation of the following sites, which are included on the Environmental Management Register (EMR) or the Contaminated Land Register (CLR), as indicated below. Further details for these sites are available by contacting this Agency.

Lot	Plan	
13	GV312	EMR
11	GV297	EMR

**ADDITIONAL ADVICE**

**From the 1st August 2012, the price of an EMR/CLR search will increase to \$41.55 per lot for internet based searches and \$48.85 per lot for EMR/CLR searches done by means other than the internet.**

If you have any queries in relation to this search please phone 13QGOV (13 74 68)

**Registrar**  
**Administering Authority**

## **Appendix C Environmentally Relevant Activities and Notifiable Activities within Current Mining Operations**

## Appendix C - Environmentally Relevant Activities and Notifiable Activities within Current Mining Operations

### C.1 Environmentally Relevant Activities

Environmentally Relevant Activities as outlined in the GRM HSE Environmental Plan of Operations FY12 (BMA Table 2).

Environmentally Relevant Activities	Mining Lease	Description
<b>8 Chemical Storage</b> (1) Chemical Storage (the relevant activity) consists of storing – a) 50t or more of chemicals of dangerous goods class 1 or class 2, division 2.3 in containers of at least 10m <sup>3</sup> ; or b) 50t or more of chemicals of dangerous goods class 6, division 6.1 in containers capable of holding at least 900kg of the chemicals; or c) 10m <sup>3</sup> or more of chemicals of class C1 or C2 of combustible liquids under AS1940 or dangerous goods class 3; or d) The following quantities of other chemicals in containers of at least 10m <sup>3</sup> – (i) 200t or more, if they are solids or gases; (ii) 200m <sup>3</sup> or more, if they are liquids	ML1900	Riverside hydrocarbon storage
	ML70288	Goonyella hydrocarbon storage
	ML1764 ML1763	Remote fuel farms
	ML1900 ML1764	Contractor motor vehicle workshop
	ML1763	Explosive materials storage
<b>20 Metal recovery</b> (1) Metal recovery (the <b>relevant activity</b> ) consists of recovering metal by operating— (a) a scrap metal yard; or (b) a facility for dismantling automotive or mechanical equipment, including deboning brake or clutch components.	ML1764	Ahden's Yard
<b>63 Sewage treatment</b> Sewage treatment (the relevant activity) consists of: (a) operating 1 or more sewage treatment works at a site that have a total daily peak design capacity of at least 21EP; or (b) operating a sewage pumping station with a total design capacity of more than 40KL in an hour, if the operation of the pumping station is not an essential part of the operation of sewage treatment works to which paragraph (a) applies	ML70288	Goonyella sewage lagoon
	ML1900	Riverside sewage treatment plant DEDI sewage treatment plant
	ML1763	Broadmeadow sewage treatment plant
	ML1900	Eureka Village sewage treatment plant
<b>60 Waste disposal</b> (1) Waste disposal (the <b>relevant activity</b> ) consists of only 1 of the following— (a) operating a facility for disposing of— (i) only regulated waste; or (ii) regulated waste and any, or any combination, of the following— (A) general waste; (B) limited regulated waste; (C) if the facility is in a scheduled area—no more than 5t of untreated clinical waste in a year;	ML70287	Goonyella tailings dam
	ML1900 ML70121	Riverside tailings dam

## Appendix C - Environmentally Relevant Activities and Notifiable Activities within Current Mining Operations

Environmentally Relevant Activities	Mining Lease	Description
(b) operating a facility for disposing of, in a year, 50t or more of waste consisting of— (i) only general waste; or (ii) general waste and either, or a combination, of the following— (A) a quantity of limited regulated waste that is no more than 10% of the total amount of waste received at the facility in a year; (B) if the facility is in a scheduled area—no more than 5t of untreated clinical waste.	ML1763	Ramp 32 Timber dump
	ML1763 ML1764	Waste tyre disposal
<b>56 Regulated waste storage</b>  Regulated waste storage (the relevant activity) consists of operating a facility for receiving and storing regulated waste for more than 24 hours.	ML1764	Ahden's yard
<b>57 Regulated waste transport</b>  (1) Regulated waste transport (the <b>relevant activity</b> ) consists of— (a) transporting on a non-commercial basis 250kg or more of regulated waste in a vehicle; or (b) transporting on a commercial basis any quantity of regulated waste in a vehicle.	All leases	Collection of regulated waste from various locations around site.

### C.2 Notifiable Activities

Notifiable Activities as outlined within the GRM HSE Environmental Plan of Operations FY12.

GRM has areas of land that are listed on the EMR (Schedule 2 of EP Act). Details of the listed properties and activities are listed below (BMA Table 3):

OBJECT ID	Label ID	X	Y	Description	Contaminant	Comments	EP_Act_Not	Status
1	BRM	601732.620	7588970.453	Diesel storage	Hydrocarbon		29(b)	Active
2	BRM	601822.753	7589009.010	Sewage treatment plant	Waste treatment (effluent)	Being upgraded FY12	37	Active
3	GY	600545.464	7597794.000	Ramp11 remote fuel farm	Hydrocarbon	Previously found at GY-17	29(b)	Active
4	GY	599192.862	7587982.707	Workshop Tank Farm	Hydrocarbons	Haul road	29 (b)	No longer relevant
5	GY	601399.441	7599234.615	Blast compound	Explosive storage area		15	Active
6	GY	601665.473	7595212.970	Blast compound	Explosive storage area		15	Active
7	GY	598929.228	7587912.639	MIBC storage	Chemical storage		7	Active
8	GY	598514.465	7589851.616	Ardens yard	Scrap yard	Scrap metal and waste oil	33	Active
9	GY	594092.783	7588272.977	Coal rejects landform	Variety of residual CPP chemicals		24(a)	Active
10	GY	595215.211	7583651.217	Coal rejects landform	Variety of residual CPP chemicals		24(a)	Active
11	GY	598406.200	7586750.455	GRM sewerage lagoons	Waste treatment (effluent)		37	Active
12	GY	600071.576	7586375.768	Former	Hydrocarbons		20	Active

## Appendix C - Environmentally Relevant Activities and Notifiable Activities within Current Mining Operations

OBJECT ID	Label ID	X	Y	Description	Contaminant	Comments	EP_Act_Not	Status
				Landfill in Ramp 2 Spoil				
13	GY	600050.643	7586440.048	Decommissioned Asbestos Landfill	Asbestos		3	Active
14	GY	600391.909	7588342.662	Ramp 3 Tyre Dump	Large vehicle tyre dump		20	Active
15	GY	597826.414	7588227.590	Goonyella Tailings Dam	Hydrocarbon and flotation agents		24 (a)	Active
16	GY	600852.196	7587711.584	Coal Rejects Landform	Variety of CPP chemicals		24 (a)	Active
17	GY	599216.589	7588016.329	Former Oil Disposal Site	Hydrocarbons		20	Active
18	GY	599289.909	7588097.436	Former Oil Disposal Site	Hydrocarbons		20	Active
19	GY	601695.140	7589265.779	Ramp 4 Decommissioned Landfill	Hydrocarbons, Metals, PCBs		20	Active
20	GY	600606.252	7587406.391	Former Landfill (Ramp 2)	Hydrocarbons, Metals, PCBs		20	Active
21	GY	598460.801	7586774.817	Former Landfill (Holding Paddock Creek)	Hydrocarbons, Metals		20	Active
22	GY	598490.335	7586218.330	Former Landfill (Lease Boundary Road)	Hydrocarbons, Metals		20	Active
23	GY	599508.547	7585782.033	Former Landfill (Holding Paddock Dam)	Hydrocarbons, Metals		20	Active
24	GY	599211.710	7583211.122	Former Landfill (Broadmeadow)	Hydrocarbons, Metals		20	Active
25	GY	599002.061	7588077.818	Bulk Diesel Storage (Mega Tanks)	Hydrocarbons		29 (b)	Active
26	GY	599469.365	7587921.181	Service Bay Light Vehicle Refuelling Facility	Hydrocarbons	Spoil	29 (b)	No longer relevant
27	GY	599454.309	7587907.284	Service Bay Light Vehicle Refuelling Facility	Hydrocarbons	Spoil	29 (b)	No longer relevant
28	GY	602148.916	7592080.642	Ramp 6 Remote Fuel Storage Facility	Hydrocarbons	Relocated	29	No longer relevant
29	GY	602124.228	7598378.926	Ramp 11 Remote Fuel Storage	Hydrocarbons	Relocated	29	No longer relevant
30	GY	599203.234	7601049.402	Ramp 13 Remote Fuel Storage	Hydrocarbons	Moved to Ramp 14	29	No longer relevant
31	GY	602054.497	7596901.642	Stub 10 Remote Fuel Storage	Hydrocarbons	Relocated	29	No longer relevant
32	GY	602080.547	7596415.389	Cleanskin Landfarm	Sampling required to establish contaminant	Remediated	37	No longer relevant



## Appendix C - Environmentally Relevant Activities and Notifiable Activities within Current Mining Operations

OBJECT ID	Label ID	X	Y	Description	Contaminant	Comments	EP_Act_Not	Status
33	GY	600067.111	7588880.216	Twin Tanks Dam	Hydrocarbons	No hydrocarbons stored in this area	29	No longer relevant
34	GY	600124.962	7588951.248	Eureka Creek adjacent to twin tanks dam spillway	Hydrocarbons	No contaminants are actively released into Eureka Creek. Monthly analysis can confirm this	29	No longer relevant
35	GY	599286.696	7587139.631	Airport Dam	Copper	No dam occurs at this location	24 (a)	No longer relevant
36	GY	599205.827	7587776.399	Decommissioned Underground Fuel Tanks	Hydrocarbons	Spoil	29 (a)	No longer relevant
37	GY	602172.930	7592114.540	Stubline 16 Remote Fuel Facility	Hydrocarbons	Relocated	29 (b)	No longer relevant
38	GY	599662.407	7600403.795	Ramp 14 Remote Fuel Storage	Hydrocarbons	Relocated	29 (b)	No longer relevant
39	GY	599469.365	7587906.270	Service Bay Tank Farm	Hydrocarbons	Spoil	29 (b)	No longer relevant
40	GY	599427.672	7587825.636	Service Bay Tank Farm	Hydrocarbons	Spoil	29 (b)	No longer relevant
41	GY	599193.152	7587997.328	Workshop Petroleum Product Storage	Hydrocarbons		29 (b)	Status of activity is unknown
42	GY	599003.798	7588108.219	Rail Siding and Fuel Pump Areas and Tank	Hydrocarbons		29	Status of activity is unknown
43	GY	601850.466	7599525.630	Remote Dump Yards and Areas (High Dump)	Various materials - drums and containers		33	Status of activity is unknown
44	GY	599032.435	7588007.320	Decommissioned Underground Tanks	Hydrocarbons		29 (b)	Status of activity is unknown
45	GY	599207.839	7588049.562	Decommissioned Underground Tanks	Hydrocarbons		29 (b)	Status of activity is unknown
46	RV	589606.805	7593271.426	Blast compound	Explosive storage area		15	Active
47	RV	598820.017	7599033.042	Tyre dump	Landfill		20	Active
48	RV	598907.055	7598919.167	Ramp14 remote fuel farm	Hydrocarbon	Previously GY18 and GY 57	29(b)	Active
49	RV	597568.511	7591118.964	DEDI Hydrocarbon storage	Hydrocarbon		29(b)	Active
50	RV	597578.646	7593627.360	MIBC Storage	Chemical		7	Active
51	RV	597851.181	7593780.793	Grease storage	Hydrocarbon		29(b)	Active
52	RV	594105.988	7591488.402	Coal reject landform	Variety of residual CPP chemicals		24(a)	Active
53	RV	598219.370	7593330.435	Service Bay Fuel Tanks	Hydrocarbons		29(b)	Active

## Appendix C - Environmentally Relevant Activities and Notifiable Activities within Current Mining Operations

OBJECT ID	Label ID	X	Y	Description	Contaminant	Comments	EP_Act_Not	Status
54	RV	597848.171	7593007.339	Landfarm	Waste treatment (hydrocarbon)	Treatment of water and materials contaminated with hydrocarbons	37	Active
55	RV	597706.566	7592977.072	Diesel storage	Hydrocarbons		29(b)	Active
56	RV	597425.306	7593703.235	Riverside sewerage treatment plant	Waste treatment (effluent)		37	Active
57	RV	596988.656	7591760.603	Eureka village sewerage treatment plant	Waste treatment (effluent)		37	Active
58	RV	598228.639	7590985.809	DEDI sewerage treatment plant	Waste treatment (effluent)		37	Active
59	RV	598420.962	7593403.344	Service Bay Fuel Tanks	Hydrocarbons	Actual location is 90m to the south. Object ID# 53	29(b)	No longer relevant
60	RV	598063.301	7593720.730	Light Vehicle Refuelling Facilities	Hydrocarbons	Decommissioned. Tanks are still present	29(b)	Active
61	RV	596818.939	7593528.489	Decommissioned Landfill	Low Level Contamination		20	Active
62	RV	597921.883	7595012.849	Tailings Dam	Hydrocarbons and Flotation Agents		24 (a)	Active
63	RV	597921.883	7595012.849	Tailings Dam	Hydrocarbons and Flotation Agents		24 (a)	Active
64	RV	596610.140	7593217.401	Rehabilitated Coal Reject Landform	Hydrocarbons and Flotation Agents		24 (a)	Active
65	RV	598399.400	7593737.110	Temporary Waste oil Storage Bund - WS3	Hydrocarbons	Oily water separator	37	Active
66	RV	597730.501	7592938.361	Decommissioned Diesel Storage	Hydrocarbons		29(b)	Active
67	RV	598282.775	7593747.333	Workshop Petroleum Product Storage	Hydrocarbons		29(b)	Active
68	RV	597854.174	7593774.675	Scrap Area	Hydrocarbons	No hydrocarbon contaminated scrap in this location	33	No longer relevant
69	RV	598857.156	7601297.338	Remote Mine Fuel Facility	Hydrocarbons	Relocated	29 (b)	No longer relevant
70	RV	596703.348	7592887.486	Williams Dam	Variety of CPP Chemicals		24 (a)	Active
71	RV	598885.078	7593165.619	ANFO Diesel Storage Tank	Hydrocarbons	Relocated to current explosive storage areas	29 (b)	No longer relevant
72	RV	597846.271	7592937.832	Decommissioned Landfill	Hydrocarbons		20	Status of activity is unknown





URS Australia Pty Ltd  
Level 17, 240 Queen Street  
Brisbane, QLD 4000  
GPO Box 302, QLD 4001Australia

T: 61 7 3243 2111  
F: 61 7 3243 2199

[www.ap.urscorp.com](http://www.ap.urscorp.com)