



Report

Caval Ridge Air Quality Assessment - Supplementary Report

30 OCTOBER 2009

Prepared for
BMA
Level 23
71 Riparian Plaza
Brisbane Qld 4000

42626420

Project Manager:



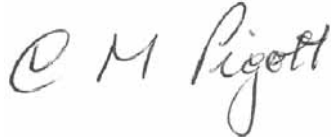
Robert Storrs
Associate Environmental
Scientist

URS Australia Pty Ltd

**Level 16, 240 Queen Street
Brisbane, QLD 4000
GPO Box 302, QLD 4001
Australia**

**T: 61 7 3243 2111
F: 61 7 3243 2199**

Project Director:



Chris Pigott
Senior Principal

Author:



Darlene Heuff
Senior Associate Scientist

Reviewer:



p.p. Lisa Russ
Senior Associate
Environmental Engineer

Date: **30 October 2009**
Reference: 42626420/1/3
Status: Draft

© Document copyright of URS Australia Pty Limited.

This report is submitted on the basis that it remains commercial-in-confidence. The contents of this report are and remain the intellectual property of URS and are not to be provided or disclosed to third parties without the prior written consent of URS. No use of the contents, concepts, designs, drawings, specifications, plans etc. included in this report is permitted unless and until they are the subject of a written contract between URS Australia and the addressee of this report. URS Australia accepts no liability of any kind for any unauthorised use of the contents of this report and URS reserves the right to seek compensation for any such unauthorised use.

Document delivery

URS Australia provides this document in either printed format, electronic format or both. URS considers the printed version to be binding. The electronic format is provided for the client's convenience and URS requests that the client ensures the integrity of this electronic information is maintained. Storage of this electronic information should at a minimum comply with the requirements of the Commonwealth Electronic Transactions Act (ETA) 2000.

Where an electronic only version is provided to the client, a signed hard copy of this document is held on file by URS and a copy will be provided if requested.

Table of Contents

| | | |
|----------|--|-----------|
| 1 | Introduction | 1 |
| 1.1 | Changes to EPP (Air) 2008..... | 1 |
| 1.2 | Modifications to Air Quality Assessment Methodology..... | 1 |
| 1.3 | Wind Speed Dependent Wind Erosion..... | 2 |
| 1.3.1 | Introduction | 2 |
| 1.3.2 | Wind Erosion for Stockpiles..... | 3 |
| 1.3.3 | Wind Erosion for Exposed Areas..... | 4 |
| 1.3.4 | Wind Speed Dependent Emission Factors..... | 4 |
| 2 | Site Emissions Inventory | 5 |
| 2.1 | Annual Emissions Scenarios..... | 5 |
| 2.2 | Worst-Case 24-Hours Emissions Scenario | 9 |
| 3 | Interpretation of Air Quality Impacts | 10 |
| 3.1 | Sensitive Receptors..... | 10 |
| 3.2 | Annual Emissions Scenario..... | 11 |
| 3.2.1 | Particulate Matter as TSP..... | 11 |
| 3.2.2 | Particulate Matter as PM ₁₀ | 15 |
| 3.2.3 | Particulate Matter as PM _{2.5} | 21 |
| 3.2.4 | Dust Deposition | 30 |
| 3.3 | Worst-Case 24 Hour Emissions Scenario | 32 |
| 3.3.1 | Worst-Case North Scenario | 32 |
| 3.3.2 | Worst Case South Scenario..... | 36 |
| 3.3.3 | Likelihood of Occurrence of Worst Case Impacts | 40 |
| 4 | Comments and Summary | 42 |
| 4.1 | Ambient Air Monitoring Program | 42 |
| 4.2 | Cumulative Impacts..... | 43 |
| 4.3 | Summary..... | 43 |
| 5 | References..... | 45 |
| 6 | Limitations..... | 46 |

Tables

| | | |
|-----------|--|----|
| Table 1-1 | Summary of Project Goals for Particulate Matter | 1 |
| Table 1-2 | Additional Changes to Model Parameters | 2 |
| Table 1-3 | Summary of Parameters used to Calculate Wind Erosion Emission Factors..... | 4 |
| Table 2-1 | Year 1 Annual Emission Rate of TSP and PM ₁₀ (kg/year) | 6 |
| Table 2-2 | Year 2 Annual Emission Rate of TSP and PM ₁₀ (kg/year) | 7 |
| Table 2-3 | Year 20 Annual Emission Rate of TSP and PM ₁₀ (kg/year) | 8 |
| Table 2-4 | Worst-Case 24 hour Emission Rate Scenarios for PM ₁₀ (kg/day) | 9 |
| Table 3-1 | Predicted Annual Average Ground-Level Concentrations of TSP..... | 12 |
| Table 3-2 | Year 1 and Year 2 Emission Scenarios – Predicted Fifth Highest 24 Hour Average Ground-Level Concentration of PM ₁₀ (µg/m ³). EPP(Air) Objective is 50 µg/m ³ | 16 |
| Table 3-3 | Year 20 Emission Scenario – Fifth Highest 24 Hour Average Ground Level Concentration of PM ₁₀ (µg/m ³)..... | 18 |
| Table 3-4 | Maximum 24 Hour Average Ground Level Concentration of PM _{2.5} (µg/m ³). | 23 |
| Table 3-5 | Annual Average Concentration of PM _{2.5} (µg/m ³). | 24 |
| Table 3-6 | Monthly Annual Average Dust Deposition (g/m ² /month) | 31 |
| Table 3-7 | Worst Case North Scenario - Fifth Highest Ground-Level Concentration of PM ₁₀ (µg/m ³). | 33 |
| Table 3-8 | Worst Case South Scenario - Fifth Highest Ground-Level Concentration of PM ₁₀ (µg/m ³). | 37 |

Figures

| | | |
|------------|---|----|
| Figure 1-1 | Wind Speed Dependent Emission Factor for Stockpiles | 4 |
| Figure 3-1 | Sensitive Receptor Locations | 11 |
| Figure 3-2 | Annual Average Ground-Level Concentration of TSP for Year 1. EPP(Air) objective is 90 µg/m ³ (dashed line)..... | 13 |
| Figure 3-3 | Annual Average Ground-Level Concentration of TSP for Year 2. EPP(Air) objective is 90 µg/m ³ (dashed line)..... | 14 |
| Figure 3-4 | Annual Average Ground-Level Concentration of TSP for Year 20. EPP(Air) objective is 90 µg/m ³ (dashed line)..... | 15 |
| Figure 3-5 | Fifth Highest 24-hour Average Ground-Level Concentration of PM ₁₀ for Year 1. EPP(Air) objective is 50 µg/m ³ (dashed line)..... | 19 |
| Figure 3-6 | Fifth Highest 24-hour Average Ground-Level Concentration of PM ₁₀ for Year 2. EPP(Air) objective is 50 µg/m ³ (dashed line)..... | 20 |
| Figure 3-7 | Fifth Highest 24-hour Average Ground-Level Concentration of PM ₁₀ for Year 20. EPP(Air) objective is 50 µg/m ³ (dashed line)..... | 21 |

Figure 3-8 Maximum 24-hour Average Ground-Level Concentration of PM_{2.5} for Year 1. EPP(Air) objective is 25 µg/m³ (dashed line). 25

Figure 3-9 Maximum 24-hour Average Ground-Level Concentration of PM_{2.5} for Year 2. EPP(Air) objective is 25 µg/m³ (dashed line). 26

Figure 3-10 Maximum 24-hour Average Ground-Level Concentration of PM_{2.5} for Year 20. EPP(Air) objective is 25 µg/m³ (dashed line). 27

Figure 3-11 Annual Average Ground-Level Concentration of PM_{2.5} for Year 1. EPP(Air) objective is 8 µg/m³ (dashed line). 28

Figure 3-12 Annual Average Ground-Level Concentration of PM_{2.5} for Year 2. EPP(Air) objective is 8 µg/m³ (dashed line). 29

Figure 3-13 Annual Average Ground-Level Concentration of PM_{2.5} for Year 20. EPP(Air) objective is 8 µg/m³ (dashed line). 30

Figure 3-14 Monthly Dust Deposition for Year 20. Project goal is 4 g/m²/month (dashed line). 32

Figure 3-15 Worst-Case North Scenario - Fifth Highest 24-hour Average Ground-Level Concentration of PM₁₀ for Year 1. EPP(Air) objective is 50 µg/m³ (dashed line). 34

Figure 3-16 Worst-Case North Scenario - Fifth Highest 24-hour Average Ground-Level Concentration of PM₁₀ for Year 2. EPP(Air) objective is 50 µg/m³ (dashed line). 35

Figure 3-17 Worst-Case North Scenario - Fifth Highest 24-hour Average Ground-Level Concentration of PM₁₀ for Year 20. EPP(Air) objective is 50 µg/m³ (dashed line). 36

Figure 3-18 Worst-Case South Scenario - Fifth Highest 24-hour Average Ground-Level Concentration of PM₁₀ for Year 1. EPP(Air) objective is 50 µg/m³ (dashed line). 38

Figure 3-19 Worst-Case South Scenario - Fifth Highest 24-hour Average Ground-Level Concentration of PM₁₀ for Year 2. EPP(Air) objective is 50 µg/m³ (dashed line). 39

Figure 3-20 Worst-Case South Scenario - Fifth Highest 24-hour Average Ground-Level Concentration of PM₁₀ for Year 20. EPP(Air) objective is 50 µg/m³ (dashed line). 40

Figure 3-21 Year 20 Worst-Case North Scenario - Timeseries of Predicted 24-hour Average Ground-Level Concentration of PM₁₀ at Receptor Location 28. EPP(Air) objective is 50 µg/m³ (dashed line). 41

Figure 4-1 Proposed Ambient Air Monitoring Program Including Dust Deposition, Monitoring of Particulate Matter and Meteorological Parameters 42

Abbreviations

| Abbreviation | Description |
|--------------------------|---|
| @ | At |
| CPP | Coal Processing Plant |
| DERM | Department of Environment and Resource Management |
| EPP(Air) | Queensland Environmental Protection (Air) Policy 2008 |
| EIS | Environmental Impact Statement |
| kg/ha/year | Kilograms per hectare per year |
| kg/ha/hr | Kilograms per hectare per hour |
| $\mu\text{g}/\text{m}^3$ | Micrograms per cubic metre |
| m | Metres |
| m/s | Metre per second |
| OB | Overburden |
| % | Percentage |
| PM ₁₀ | Particulate matter less than 10 microns in diameter |
| PM _{2.5} | Particulate matter less than 2.5 microns in diameter |
| ROM | Run of mine |
| T+S | Truck and shovel |
| TSP | Total suspended particulate |
| VKT | Vehicle kilometres travelled |

Introduction

1.1 Changes to EPP (Air) 2008

The methodology for Caval Ridge EIS Air Quality Assessment (EIS Section 10 and Appendix L) was developed in mid 2008 at which time the Queensland EPP (Air) 1997 was under affect. These guidelines have since been updated, with the new EPP(Air) policy having taken affect on 1 January 2009. In particular, the revised EPP(Air) 2008 air quality objective for the 24-hour average concentration of PM₁₀ of 50 µg/m³ is much stricter than the EPP(Air) 1997 air quality objective of 150 µg/m³.

In summary, relevant differences in the EPP(Air) 1997 and EPP(Air) 2008 include:

- PM₁₀ 24 hour: 50 µg/m³ with 5 exceedances allowed per year, previously 150 µg/m³ with no allowable exceedances
- PM₁₀ annual: removed in 2008 guidelines, previously 50 µg/m³
- PM_{2.5} 24 hour: 25 µg/m³, previously not included
- PM_{2.5} annual: 8 µg/m³, previously not included

The adopted air quality goals for the Caval Ridge Project for TSP, PM₁₀, PM_{2.5} and dust deposition are included in Table 1-1.

Table 1-1 Summary of Project Goals for Particulate Matter

| Pollutant | Averaging Period | Objective or Goal | Jurisdiction |
|------------------------------|------------------|---|-----------------|
| Total suspended particulates | Annual | 90 µg/m ³ | EPP(Air) |
| PM ₁₀ | 24-hour | 50 µg/m ³ (5 exceedances allowed) | EPP(Air) |
| PM _{2.5} | 24-hour | 25 µg/m ³ | EPP(Air) |
| | Annual | 8 µg/m ³ | EPP(Air) |
| Dust deposition | Monthly | 4 g/m ² /month | Queensland DERM |

1.2 Modifications to Air Quality Assessment Methodology

A review of modelling results presented in Caval Ridge EIS Chapter 10 and Appendix L suggested that the methodology applied as part of the Caval Ridge EIS Air Quality Assessment has lead to excessively conservative predictions of air quality impacts of dust from Caval Ridge mine. In order to refine the modelling methodology, consideration was given to the implementation of additional operational commitments from BMA as well as changes to modelling strategies.

Changes to operations to reduce dust that have been incorporated into the revised modelling included:

- Fleet optimisation - reduced fleet and dozers (less vehicle kilometres travelled (VKT));
- Introduction of back hauling to minimise number of trucks running empty (reduced VKTs);
- Additional coal ramps in Horse Pit (reduced VKTs); and
- Redistributed tailings and rejects placement across Horse and Heyford Pits (reduced VKTs in the northern part of mine. Initially it was planned to use Horse Pit for rejects disposal.)

Changes to modelling methodology that have been incorporated in order to reduce the level of conservatism within the model include:

1 Introduction

- Dragline drop height calculated more accurately using mine planning parameters;
- More accurate reflection of dozer utilisation;
- More accurate representation of coal moisture content with the EIS value of 8% for all coal replaced with 4% for ROM coal and 9% for product coal
- Simulations were conducted for 2008 using wind speed and wind direction data from the Caval Ridge monitoring site. Year 2007 was modelled in the Caval Ridge EIS air quality assessment (Chapter 10, Appendix L); and
- Constant emission rates associated with stockpiling and exposed area replaced with wind speed dependent emission rates for dust sources outlined in Section 1.3.4.

Presented in Table 1-2 is a summary of the changes to the parameters used in the Caval Ridge EIS air quality assessment (EIS Appendix L) that have been implemented in the Caval Ridge EIS supplementary air quality assessment.

Table 1-2 Additional Changes to Model Parameters

| Parameter | Units | EIS Value | EIS Supplement Value |
|----------------------------------|------------|-----------|------------------------------------|
| Moisture content of coal | % | 8.1 | - |
| Moisture content of ROM coal | % | - | 4 |
| Moisture content of product coal | % | - | 9 |
| Dozer utilisation | % | 100 | 48.5 ⁽¹⁾ |
| Dragline drop height | m | 30 | 15 |
| Emission factor for wind erosion | kg/ha/year | 0.4 | Wind speed dependent (Section 1.3) |
| Year modelled | - | 2007 | 2008 ⁽²⁾ |

Note: (1) Dozers operate on average for between 4,000 and 4,500 hours per year (person. comm. with BMA).

(2) Year 2008 was modelled as site-specific wind speed and wind direction for the 12 month period was available from the Caval Ridge monitoring site

1.3 Wind Speed Dependent Wind Erosion

1.3.1 Introduction

In a recent evaluation of fugitive particulate matter emission estimation techniques, SKM (2005) recommended not using the current default emission factors in the NPI Mining Manual (2001), which are a constant value of 0.4 kg/ha/h for TSP and 0.2 kg/ha/hr for PM₁₀, as crucial environmental factors such as wind and surface wetness are not considered. SKM (2005) suggested retaining the current NPI equation, presented here as Equation 1, to account for the climate variations across Australia while recognising the uncertainty and indicative nature of the NPI equation.

$$E = 1.9 \left(\frac{s}{1.5} \right) 365 \left(\frac{365 - p}{2356} \right) \left(\frac{f}{15} \right)$$

Equation 1

1 Introduction

Where:

- s is the silt content (%)
- f is the percentage of time that wind speed is greater than 5.4 m/s at the mean height of the stock pile
- p is the number of days when rainfall is greater than 0.25 mm

Equation 1 is used in the revised modelling of the impacts of dust emissions from the Caval Ridge project to provide an estimate for the annual total emissions of dust associated with wind erosion. The local meteorological data was then used to distribute the total annual emissions equally to those hours for which the wind speed is greater than 5.4 m/s using the methodology outlined in the following sections.

1.3.2 Wind Erosion for Stockpiles

NPI Mining Manual (2001) suggested the use of Equation 1 to calculate annual dust emission from active coal stockpiles. Equation 1 is for estimating emissions for total suspended particles (TSP). Emissions of PM₁₀ are estimated from TSP using a PM₁₀ to TSP ratio of 1/2. Equation 1 represents the annual total emissions.

Equation 2 (SKM, 2005, Eq 5.14) was then used to distribute the total annual emissions into hourly emissions

$$F = ku^3 \left(1 - \frac{u^2}{u_0^2}\right) \text{ when } u > u_0, \text{ otherwise } F = 0$$

Equation 2

Where:

- k is a constant
- u is hourly average wind speed at root mean square height of the stockpile (m)
- u_0 is a wind speed threshold velocity.

The critical wind speed u_0 is calculated based on a critical wind speed of 5.4 m/s at the root mean square height of the stockpile, corrected to 10 m based on logarithmic wind speed profile as shown in Equation 3.

$$u_0 = 5.4 \ln\left(\frac{10 - z_0}{z - z_0}\right)$$

Equation 3

Where:

- z is the root mean square height of a stockpile (m)
- z_0 is the surface roughness (0.05 m)

The constant k in Equation 2 is obtained based on the relationship that the cumulative hourly emissions calculated from Equation 2 are equal to the total annual emissions calculated from Equation 1.

1 Introduction

1.3.3 Wind Erosion for Exposed Areas

The methodology for the development of wind speed dependent dust emissions for exposed areas is identical to that for stockpiles with a critical wind speed of 5.4 m/s at 10 m height used in Equation 2.

1.3.4 Wind Speed Dependent Emission Factors

Presented in Figure 1-1 is an example of the wind speed dependent wind erosion emission factors used in the Caval Ridge supplementary air quality assessment. A summary of the annual wind speed dependent erosion for stockpiles and exposed areas for 2008 is presented in Table 1-3.

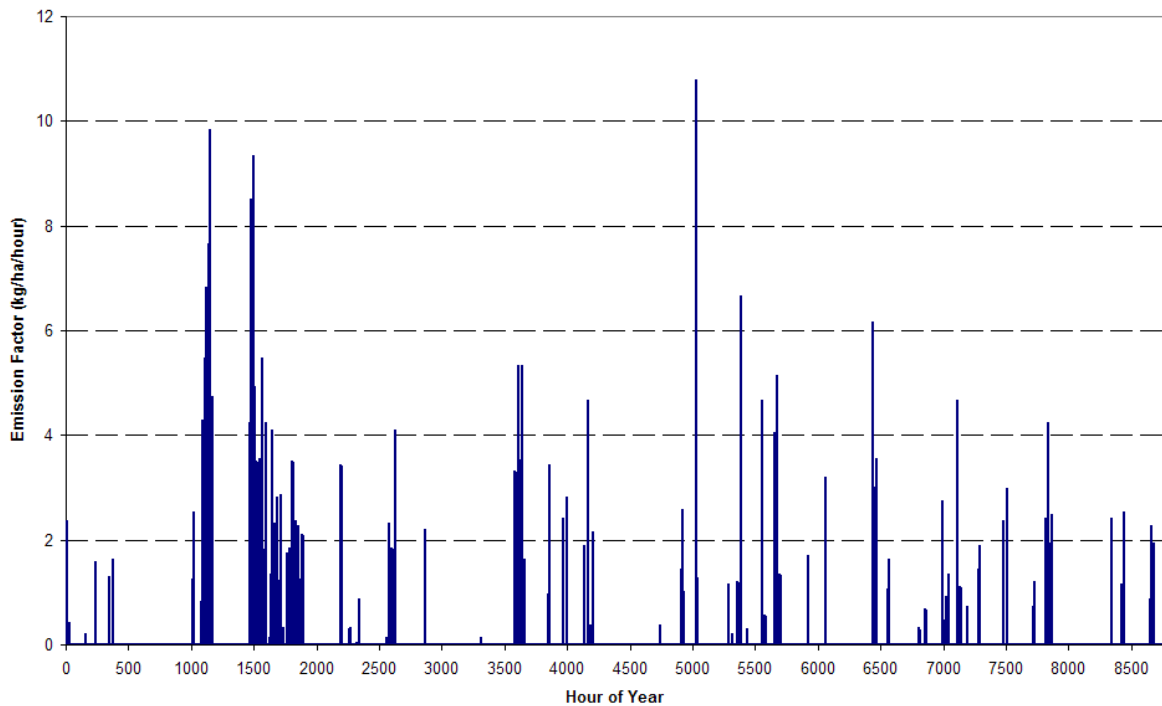


Figure 1-1 Wind Speed Dependent Emission Factor for Stockpiles

Table 1-3 Summary of Parameters used to Calculate Wind Erosion Emission Factors

| Parameter | Units | Stockpiles | Exposed Areas |
|----------------------------------|------------|------------|---------------------|
| Source height | m | 20 | - |
| Source root mean square height | m | 14.14 | - |
| Wind speed at source height | m/s | 5.40 | 5.40 |
| Critical wind speed @ 10 m (m/s) | m/s | 5.07 | 5.40 ⁽¹⁾ |
| Hours over critical wind speed | % | 4.4% | 2.2% |
| Silt content | % | 5 | 14 |
| F (kg/ha/year) | kg/ha/year | 830 | 1,135 |
| k | | 0.0798 | 0.236 |

Note: (1) A conservative approach has been adopted which will overestimate the frequency of emissions from exposed areas.

Site Emissions Inventory

2.1 Annual Emissions Scenarios

The updated annual emissions rates of TSP and PM₁₀ for Year 1 are summarised in Table 2-1, for Year 2 in Table 2-2 and for Year 20 in Table 2-3.

Included in the tables are the percentage contributions of dust emissions from various activities to the annual emissions inventory for the project.

2 Site Emissions Inventory

Table 2-1 Year 1 Annual Emission Rate of TSP and PM₁₀ (kg/year)

| Activity | TSP | | | | | PM ₁₀ | | | | |
|--|------------------|------------------|----------------|------------------|----------------|------------------|------------------|---------------|------------------|----------------|
| | Horse Pit | Heyford Pit | Peak Downs | Project Total | % of Inventory | Horse Pit | Heyford Pit | Peak Downs | Project Total | % of Inventory |
| Pre-strip T+S | 1,346,753 | 544,060 | - | 1,890,813 | 26.0% | 466,915 | 191,568 | - | 658,483 | 23.5% |
| Dragline | 0 | 498,233 | - | 498,233 | 6.8% | 0 | 168,061 | - | 168,061 | 6.0% |
| Coaling equipment | 197,568 | 136,909 | - | 334,477 | 4.6% | 122,271 | 96,143 | - | 218,413 | 7.8% |
| Blasting | 773,413 | 723,396 | - | 1,496,809 | 20.6% | 402,175 | 376,166 | - | 778,341 | 27.8% |
| Grading | 16,650 | 16,650 | - | 33,300 | 0.5% | 103,36 | 10,617 | - | 20,953 | 0.7% |
| Coal Hauling | 161,416 | 165,910 | - | 327,327 | 4.5% | 39,689 | 40,794 | - | 80,483 | 2.9% |
| Reject Hauling | 80,894 | 83,146 | - | 164,040 | 2.3% | 19,890 | 20,444 | - | 40,334 | 1.4% |
| Overburden hauling | 970,400 | 398,317 | - | 1,368,717 | 18.8% | 238,602 | 97,938 | - | 336,539 | 12.0% |
| Wind blown dust | 328,188 | 192,224 | - | 520,412 | 7.1% | 164,094 | 96,112 | - | 260,206 | 9.3% |
| ROM coal receiving at CPP | 187,695 | - | 630 | 188,324 | 2.6% | 59,205 | - | 295 | 59,500 | 2.1% |
| ROM coal sizing and stockpiling at Caval Ridge | 177,172 | - | - | 177,172 | 2.4% | 76,673 | - | - | 76,673 | 2.7% |
| Peak Downs ROM loading and conveying | - | - | 183,725 | 183,725 | 2.5% | - | - | 57,458 | 57,458 | 2.1% |
| Product coal handling and train load out | 97,849 | - | - | 97,849 | 1.3% | 42,382 | - | - | 42,382 | 1.5% |
| Total | 4,337,997 | 2,758,846 | 184,355 | 7,281,198 | 100% | 1,642,232 | 1,097,842 | 57,753 | 2,797,827 | 100.0% |

2 Site Emissions Inventory

Table 2-2 Year 2 Annual Emission Rate of TSP and PM10 (kg/year)

| Activity | TSP | | | | | PM ₁₀ | | | | |
|--|------------------|------------------|----------------|------------------|----------------|------------------|------------------|---------------|------------------|----------------|
| | Horse Pit | Heyford Pit | Peak Downs | Project Total | % of Inventory | Horse Pit | Heyford Pit | Peak Downs | Project Total | % of Inventory |
| Pre-strip T+S | 540,455 | 574,585 | - | 1,115,041 | 15.1% | 164,609 | 190,031 | - | 354,641 | 14.0% |
| Dragline | 1,771,973 | 549,785 | - | 2,321,758 | 31.5% | 316,856 | 183,788 | - | 500,644 | 19.8% |
| Coaling equipment | 214,304 | 152,239 | - | 366,543 | 5.0% | 137,559 | 110,229 | - | 247,788 | 9.8% |
| Blasting | 289,129 | 536,056 | - | 825,184 | 11.2% | 150,347 | 278,749 | - | 429,096 | 17.0% |
| Grading | 16,650 | 16,650 | - | 33,300 | 0.5% | 10,336 | 10,617 | - | 20,953 | 0.8% |
| Coal Hauling | 231,535 | 208,977 | - | 440,512 | 6.0% | 56,930 | 51,383 | - | 108,313 | 4.3% |
| Reject Hauling | 121,273 | 109,458 | - | 230,731 | 3.1% | 29,819 | 26,913 | - | 56,732 | 2.2% |
| Overburden hauling | 153,893 | 305,087 | - | 458,980 | 6.2% | 37,839 | 75,015 | - | 112,854 | 4.5% |
| Wind blown dust | 553,231 | 241,453 | - | 794,684 | 10.8% | 276,616 | 120,726 | - | 397,342 | 15.7% |
| ROM coal receiving at CPP | 200,229 | - | 992 | 201,221 | 2.7% | 64,513 | - | 465 | 64,978 | 2.6% |
| ROM coal sizing and stockpiling at Caval Ridge | 249,606 | - | - | 249,606 | 3.4% | 108,019 | - | - | 108,019 | 4.3% |
| Peak Downs ROM loading and conveying | - | - | 203,180 | 203,180 | 2.8% | - | - | 65,658 | 65,658 | 2.6% |
| Product coal handling and train load out | 139,268 | - | - | 139,268 | 1.9% | 60,322 | - | - | 60,322 | 2.4% |
| Total | 4,481,546 | 2,694,289 | 204,172 | 7,380,007 | 100% | 1,413,764 | 1,047,452 | 66,123 | 2,527,340 | 100% |

2 Site Emissions Inventory

Table 2-3 Year 20 Annual Emission Rate of TSP and PM10 (kg/year)

| Activity | TSP | | | | | PM ₁₀ | | | | |
|--|------------------|------------------|----------------|------------------|----------------|------------------|------------------|---------------|------------------|----------------|
| | Horse Pit | Heyford Pit | Peak Downs | Project Total | % of Inventory | Horse Pit | Heyford Pit | Peak Downs | Project Total | % of Inventory |
| Pre-strip T+S | 752,640 | 904,994 | - | 1,657,634 | 19.4% | 244,158 | 313,978 | - | 558,137 | 16.8% |
| Dragline | 1,136,224 | 498,503 | - | 1,634,727 | 19.2% | 379,791 | 167,902 | - | 547,692 | 16.5% |
| Coaling equipment | 215,141 | 156,125 | - | 371,266 | 4.4% | 138,323 | 113,793 | - | 252,116 | 7.6% |
| Blasting | 608,906 | 1,029,920 | - | 1,638,826 | 19.2% | 316,631 | 535,558 | - | 852,190 | 25.7% |
| Grading | 16,650 | 16,650 | - | 33,300 | 0.4% | 10,336 | 10,617 | - | 20,953 | 0.6% |
| Coal Hauling | 235,042 | 220,142 | - | 455,184 | 5.3% | 57,792 | 54,128 | - | 111,920 | 3.4% |
| Reject Hauling | 137,003 | 128,318 | - | 265,321 | 3.1% | 33,686 | 31,551 | - | 65,237 | 2.0% |
| Overburden hauling | 349,003 | 546,471 | - | 895,474 | 10.5% | 85,813 | 134,366 | - | 220,179 | 6.6% |
| Wind blown dust | 529,789 | 210,978 | - | 740,767 | 8.7% | 264,895 | 105,489 | - | 370,384 | 11.2% |
| ROM coal receiving at CPP | 202,066 | - | 1,199 | 203,265 | 2.4% | 65,291 | - | 562 | 65,853 | 2.0% |
| ROM coal sizing and stockpiling at Caval Ridge | 274,000 | - | - | 274,000 | 3.2% | 118,576 | - | - | 118,576 | 3.6% |
| Peak Downs ROM loading and conveying | - | - | 214,302 | 214,302 | 2.5% | - | - | 70,346 | 70,346 | 2.1% |
| Product coal handling and train load out | 146,544 | - | - | 146,544 | 1.7% | 63,474 | - | - | 63,474 | 1.9% |
| Total | 4,603,008 | 3,712,100 | 215,501 | 8,530,609 | 100% | 1,778,766 | 1,467,383 | 70,908 | 3,317,057 | 100% |

2 Site Emissions Inventory

2.2 Worst-Case 24-Hours Emissions Scenario

The Caval Ridge EIS air quality assessment considered two worst-case scenarios which focused on quantifying the potential impacts of dust emissions associated with specific equipment working at optimal capacity on the 24-hour average ground-level concentration of PM₁₀. One scenario considered the clustering of equipment in the northern section of Horse Pit and Heyford Pit (north scenario). The other scenario considered the clustering of equipment towards the southern ends of the pits (south scenario).

Worst-case dust emissions scenarios were associated with optimal (full operational capacity) operational performance of draglines, truck and shovel fleets, dozers and/or excavators. It was assumed that these emissions scenarios occurred for all days of the year in order to capture worst-case meteorological conditions.

Presented in Table 2-4 is a summary of the updated annual emissions inventory of PM₁₀ for the worst-case 24 hour emissions scenario outlined in Caval Ridge EIS Appendix L, Table 3-4 of Section 3.4.1.

Table 2-4 Worst-Case 24 hour Emission Rate Scenarios for PM₁₀ (kg/day)

| Activity | Year 1 | Year 2 | Year 20 |
|--|--------------------|----------------------|----------------------|
| Pre-strip T+S | 1,726 | 1,712 | 1,733 |
| Dragline | 491 | 1,648 | 1,590 |
| Coaling equipment | 296 | 302 | 290 |
| Blasting | 2,132 | 1,176 | 2,335 |
| Grading | 57 | 57 | 57 |
| Coal Hauling | 221 | 297 | 307 |
| Reject Hauling | 111 | 155 | 179 |
| Overburden hauling | 922 | 309 | 603 |
| Wind blown dust ⁽¹⁾ | 713 ⁽¹⁾ | 1,089 ⁽¹⁾ | 1,015 ⁽¹⁾ |
| ROM coal receiving at CPP | 163 | 178 | 180 |
| ROM coal sizing and stockpiling | 210 | 296 | 325 |
| Peak Downs ROM loading and conveying | 157 | 180 | 193 |
| Product coal handling and train load out | 116 | 165 | 174 |
| Total | 7,316 | 7,563 | 8,981 |

Note (1): Figure presented is indicative of annual average. Wind blown dust is wind speed dependent and varies on an hourly basis as discussed in Section 1.3.4

Interpretation of Air Quality Impacts

3.1 Sensitive Receptors

Presented in Figure 3-1 are the locations of the sensitive receptors for which results of the dispersion modelling will be presented. The two enclosed polygons to the south west of the Moranbah township (Figure 3-1) represent the location of the area zoned as the emerging community area (orange polygon) and proposed expansion of the Moranbah residential area (pink polygon). There is currently no development in the emerging communities area. The emerging community area is nominated under the Planning Scheme for Belyando Shire Part 4 Zones. The Planning Scheme indicates in clause 5 that planning will be undertaken in the emerging communities area in an integrated manner, such that: *the potential impacts of any existing or future rural, mining or rail activities are adequately mitigated through the design, orientation, location and buffering of new development.*

It is also noted in the Belyando Planning Scheme Policy 3 – Structure planning guidelines (Section 2.1.2, Step 2), Identification of constraints that; *Land in an Emerging Community Area is generally suitable for development. However some land may have environmental, scenic or other constraints that will influence the location, form and density of development. As a minimum, land with the following constraints must be identified, mapped and considered in the design of the overall development.*

BMA will work with the appropriate development authority to ensure that potential air quality impacts from its mining operations on potential developments are minimised through the design, orientation, location and buffering of new development in the emerging community area.

3 Interpretation of Air Quality Impacts

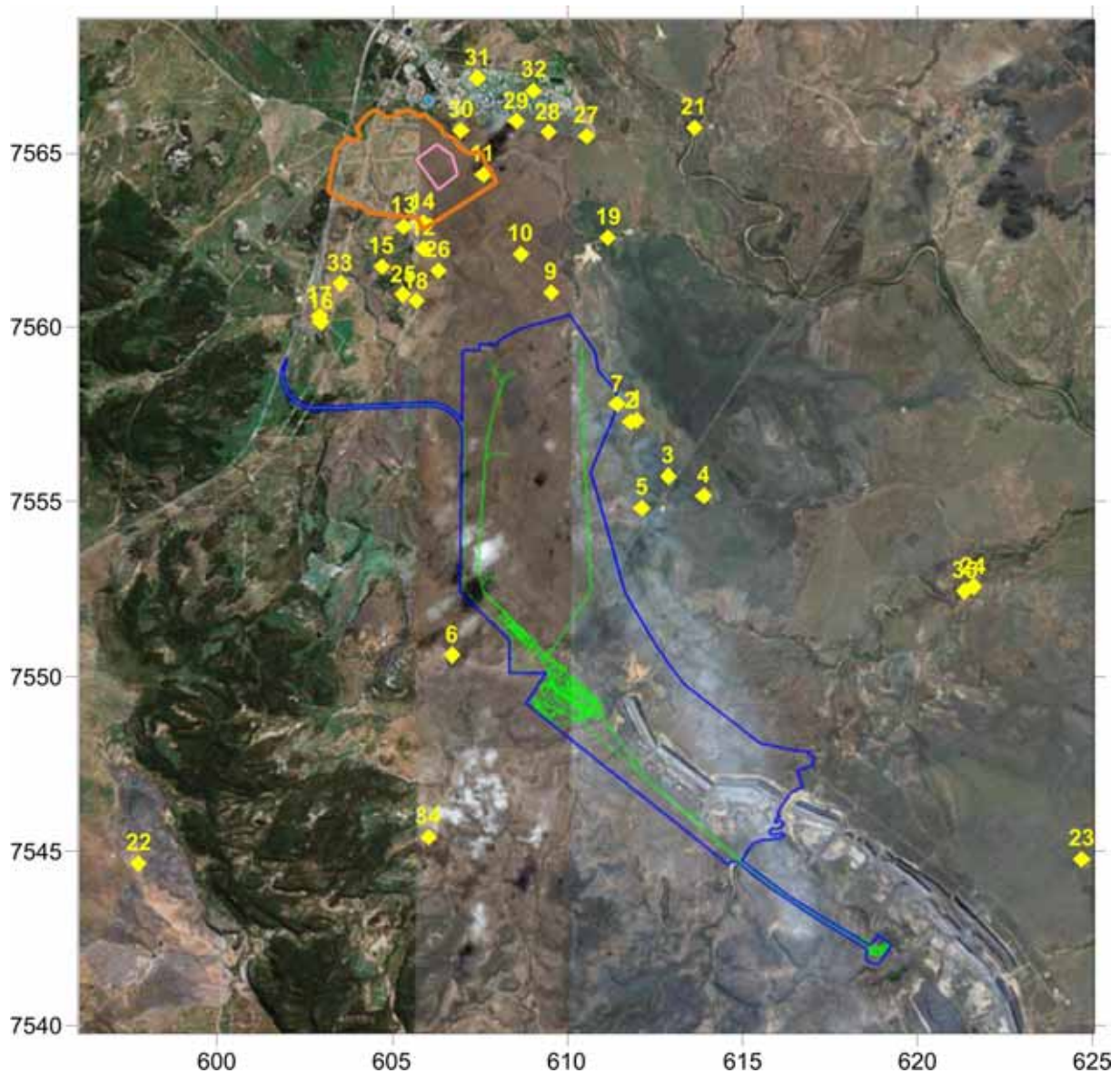


Figure 3-1 Sensitive Receptor Locations

3.2 Annual Emissions Scenario

3.2.1 Particulate Matter as TSP

Presented in Table 3-1 is a summary of the results of the dispersion modelling for the predicted annual average ground-level concentration of TSP at sensitive receptor locations. Included in the table is the incremental contribution to the annual average ground-level concentrations of TSP from the Caval Ridge project. A background level of $26.2 \mu\text{g}/\text{m}^3$ has been included in the ground-level concentration denoted in the 'Total' column of the table.

Contour plots for Year 1, Year 2 and Year 20 are presented as Figure 3-2 through Figure 3-4 respectively.

The dispersion modelling predicts that ground-level concentrations of TSP will not exceed the EPP(Air) objective of $90 \mu\text{g}/\text{m}^3$ at any receptor location due to emissions of dust from the Caval Ridge project for any of the three years modelled.

Table 3-1 Predicted Annual Average Ground-Level Concentrations of TSP..

| Receptor | Year 1 | | | Year 2 | | | Year 20 | | |
|----------|--------|-----------------------------|--------------------|--------|-----------------------------|--------------------|---------|----------------|--------------------|
| | Total | % of Guideline ¹ | Caval Contribution | Total | % of Guideline ¹ | Caval Contribution | Total | % of Guideline | Caval Contribution |
| 1 | 32 | 35% | 5 | 32 | 35% | 5 | 32 | 35% | 5 |
| 2 | 32 | 35% | 6 | 32 | 36% | 6 | 32 | 36% | 6 |
| 3 | 31 | 34% | 5 | 31 | 34% | 5 | 31 | 34% | 5 |
| 4 | 29 | 33% | 3 | 30 | 33% | 3 | 30 | 33% | 3 |
| 5 | 33 | 36% | 6 | 33 | 37% | 7 | 33 | 37% | 7 |
| 6 | 60 | 66% | 34 | 63 | 70% | 37 | 63 | 70% | 37 |
| 7 | 32 | 35% | 6 | 32 | 36% | 6 | 32 | 36% | 6 |
| 9 | 30 | 34% | 4 | 31 | 35% | 5 | 31 | 35% | 5 |
| 10 | 31 | 34% | 5 | 32 | 35% | 5 | 32 | 35% | 5 |
| 11 | 29 | 32% | 3 | 29 | 33% | 3 | 29 | 33% | 3 |
| 12 | 39 | 43% | 13 | 39 | 44% | 13 | 39 | 44% | 13 |
| 13 | 36 | 41% | 10 | 37 | 41% | 10 | 37 | 41% | 10 |
| 14 | 35 | 39% | 9 | 36 | 39% | 9 | 36 | 39% | 9 |
| 15 | 43 | 48% | 17 | 43 | 48% | 17 | 43 | 48% | 17 |
| 16 | 46 | 51% | 20 | 45 | 50% | 19 | 45 | 50% | 19 |
| 17 | 44 | 49% | 18 | 44 | 49% | 18 | 44 | 49% | 18 |
| 18 | 53 | 58% | 26 | 52 | 57% | 26 | 52 | 57% | 26 |
| 19 | 28 | 31% | 2 | 28 | 31% | 2 | 28 | 31% | 2 |
| 21 | 27 | 30% | 1 | 27 | 30% | 1 | 27 | 30% | 1 |
| 22 | 29 | 32% | 3 | 29 | 32% | 3 | 29 | 32% | 3 |
| 23 | 27 | 30% | 0 | 27 | 30% | 0 | 27 | 30% | 0 |
| 24 | 27 | 30% | 1 | 27 | 30% | 1 | 27 | 30% | 1 |
| 25 | 50 | 55% | 24 | 49 | 55% | 23 | 49 | 55% | 23 |
| 26 | 41 | 46% | 15 | 42 | 46% | 16 | 42 | 46% | 16 |
| 27 | 28 | 31% | 2 | 28 | 31% | 2 | 28 | 31% | 2 |
| 28 | 28 | 31% | 2 | 28 | 31% | 2 | 28 | 31% | 2 |
| 29 | 28 | 31% | 2 | 28 | 32% | 2 | 28 | 32% | 2 |
| 30 | 29 | 32% | 2 | 29 | 32% | 3 | 29 | 32% | 3 |
| 31 | 28 | 31% | 2 | 28 | 31% | 2 | 28 | 31% | 2 |
| 32 | 28 | 31% | 2 | 28 | 31% | 2 | 28 | 31% | 2 |
| 33 | 42 | 47% | 16 | 42 | 47% | 16 | 42 | 47% | 16 |
| 34 | 33 | 37% | 7 | 33 | 37% | 7 | 33 | 37% | 7 |
| 35 | 27 | 30% | 1 | 27 | 30% | 1 | 27 | 30% | 1 |

Note: Background values are added to model output and then rounded to the nearest whole number for the purposes of presentation.

¹EPP (Air) objective is $90 \mu\text{g}/\text{m}^3$.

3 Interpretation of Air Quality Impacts

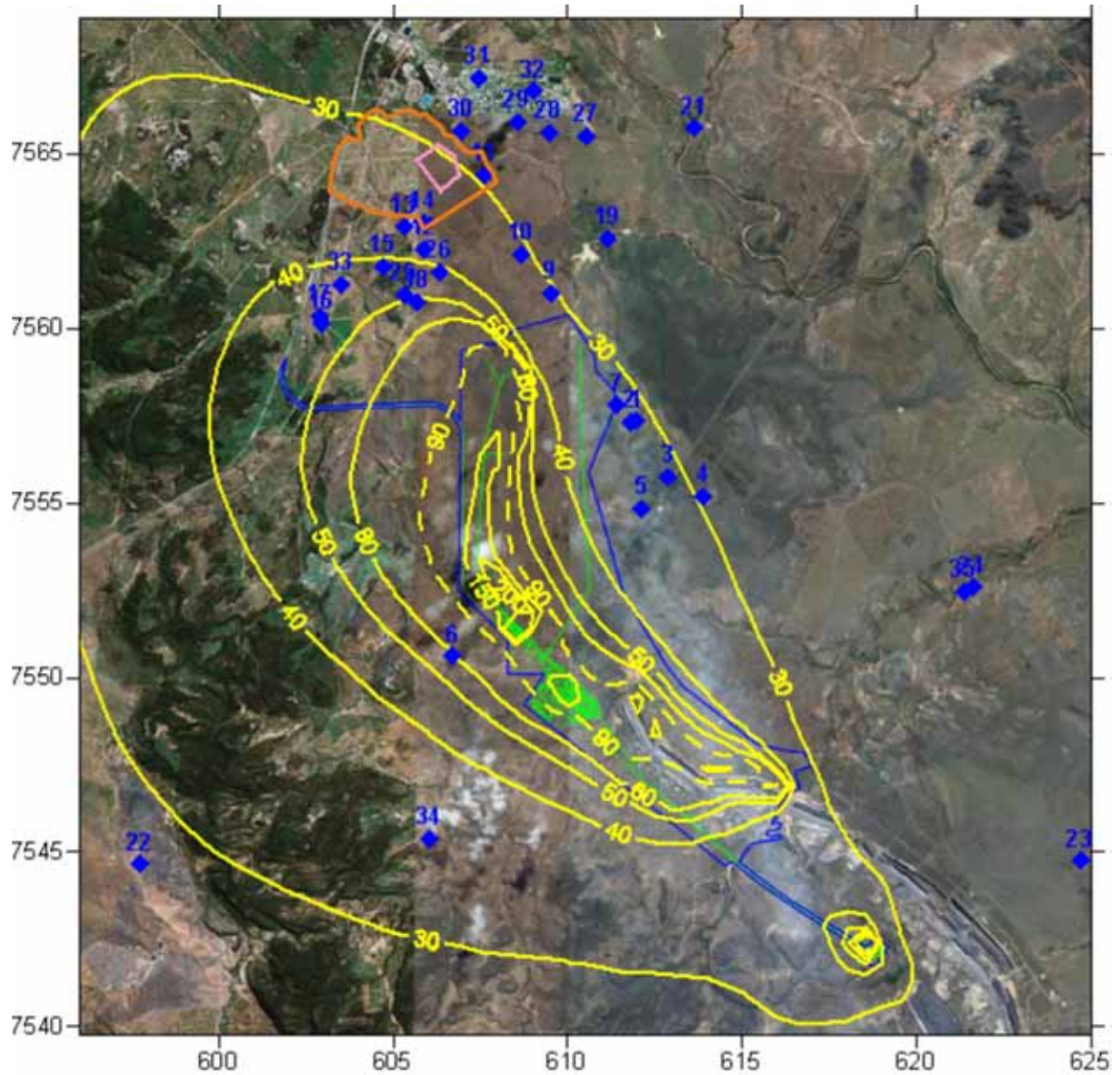


Figure 3-2 Annual Average Ground-Level Concentration of TSP for Year 1. EPP(Air) objective is 90 µg/m³ (dashed line).

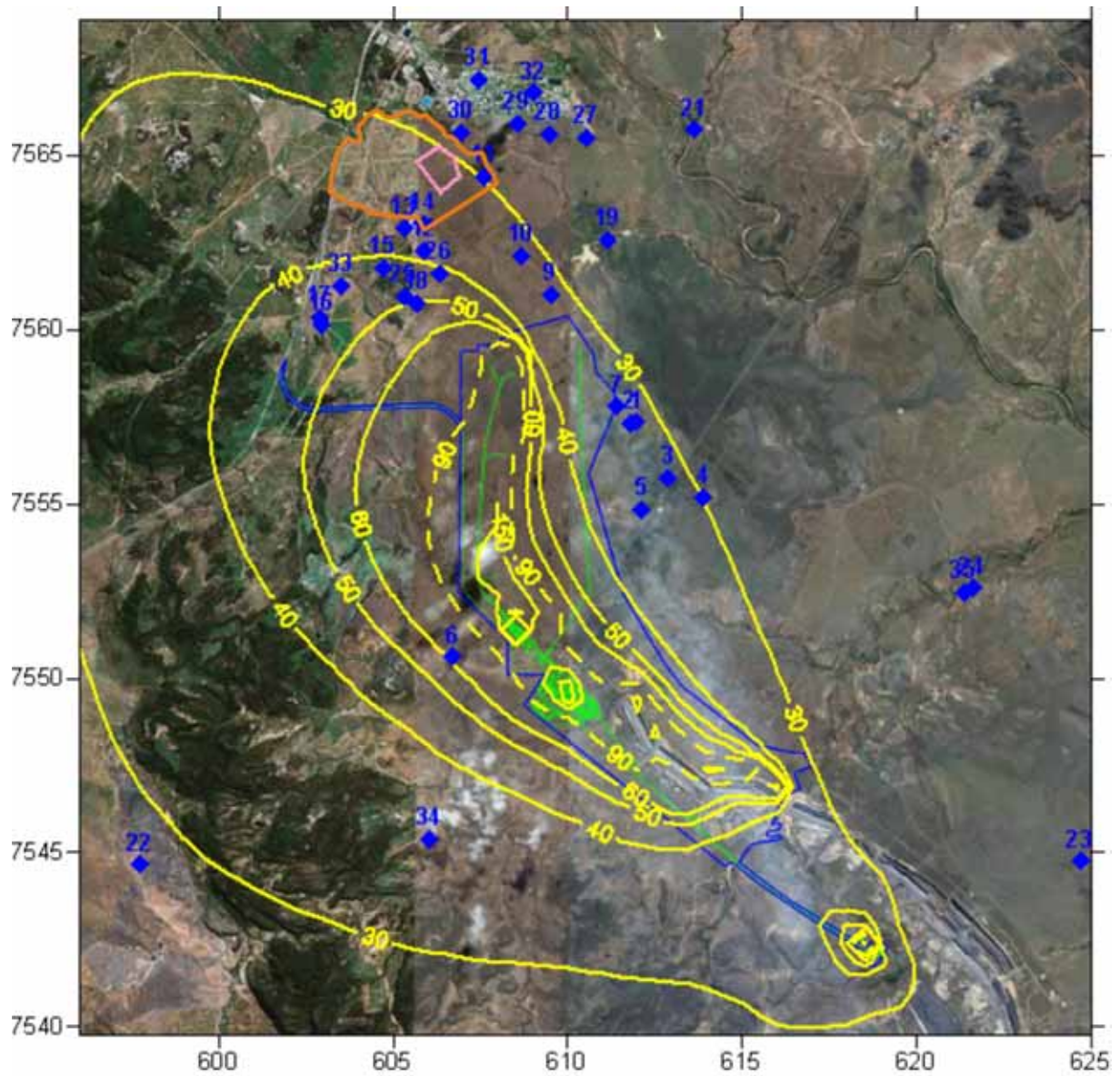


Figure 3-3 Annual Average Ground-Level Concentration of TSP for Year 2. EPP(Air) objective is 90 $\mu\text{g}/\text{m}^3$ (dashed line).

3 Interpretation of Air Quality Impacts

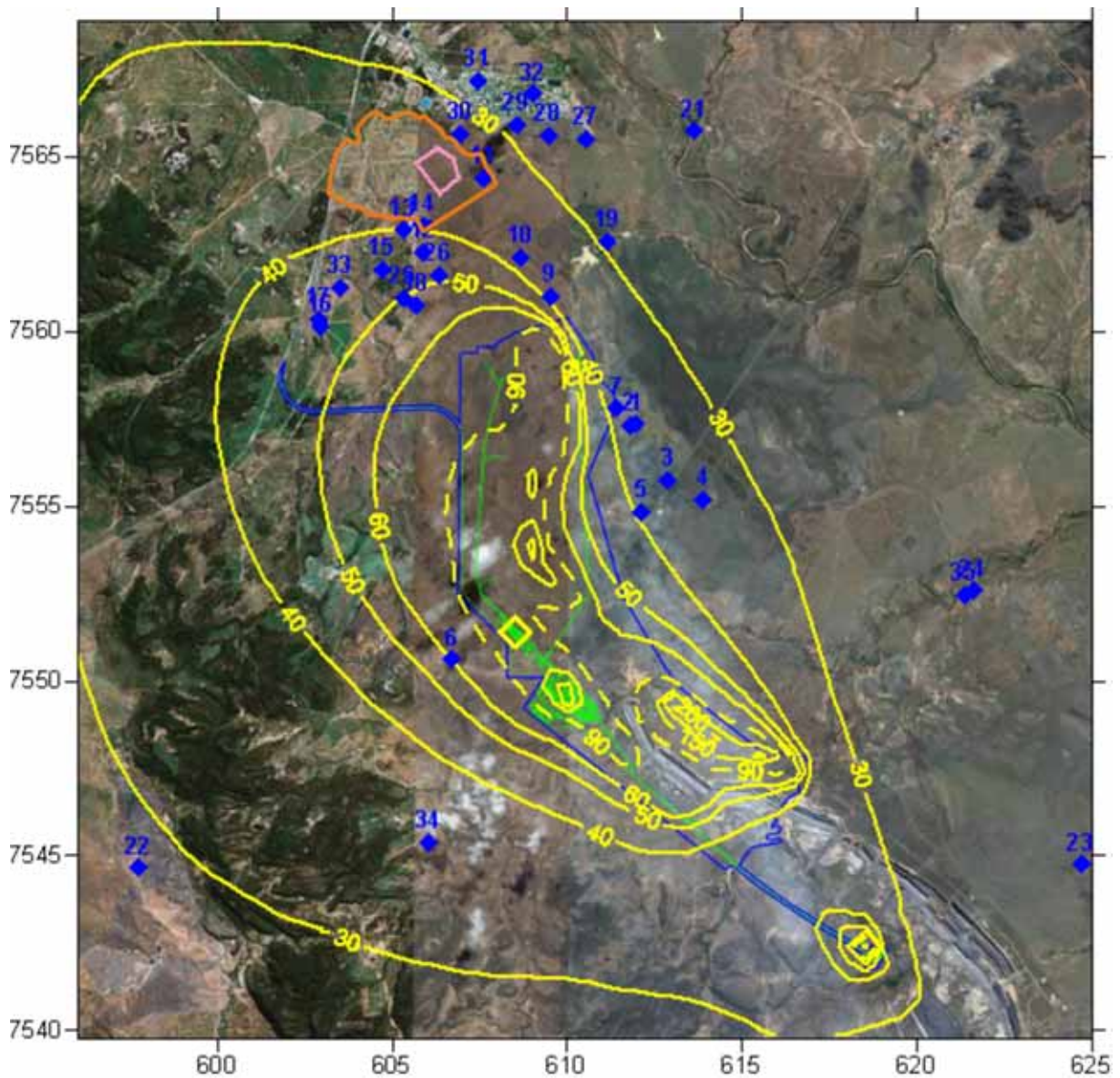


Figure 3-4 Annual Average Ground-Level Concentration of TSP for Year 20. EPP(Air) objective is 90 $\mu\text{g}/\text{m}^3$ (dashed line).

3.2.2 Particulate Matter as PM_{10}

Presented in Table 3-2 are the results of the dispersion modelling for project Year 1 and Year 2 for the fifth highest ground-level concentration of PM_{10} at receptor locations. Locations which are predicted to exceed that EPP(Air) objective of 50 $\mu\text{g}/\text{m}^3$ are highlighted in bold. Included in the table is the predicted incremental contribution of emissions of dust from the project at each of the sensitive receptor locations. As discussed in the EIS, the existing background concentration of PM_{10} is 18.8 $\mu\text{g}/\text{m}^3$. This has been included in the ground-level concentration denoted in the 'Total' column of the table.

Results suggest that the incremental contribution of emissions at sensitive receptor locations (in isolation from background conditions) will generally be greater during Year 1 site activities compared

with Year 2. The residences located to the northwest of the site are predicted to be most affected. Year 1 activities in the northern area of the project site are associated with the construction of Horse Pit.

During Year 2 operations, all mining-related activities (such as draglines, truck and shovel, coaling) will be located near the surface of Horse Pit and will not benefit from the dust reduction potential associated with activities that are located within an established pit.

During Year 1 and Year 2, the incremental contribution of PM₁₀ from project activities is predicted to be a maximum of 15 µg/m³ to the ground-level concentrations within Moranbah (receptor locations 27 through 31).

Table 3-2 Year 1 and Year 2 Emission Scenarios – Predicted Fifth Highest 24 Hour Average Ground-Level Concentration of PM₁₀ (µg/m³). EPP(Air) Objective is 50 µg/m³

| Receptor | Year 1 | | | Year 2 | | |
|----------|-----------|-----------------------------|--------------------|-----------|-----------------------------|--------------------|
| | Total | % of Guideline ¹ | Caval Contribution | Total | % of Guideline ¹ | Caval Contribution |
| 1 | 42 | 85% | 24 | 41 | 81% | 22 |
| 2 | 43 | 86% | 24 | 41 | 83% | 23 |
| 3 | 37 | 74% | 18 | 37 | 74% | 18 |
| 4 | 33 | 67% | 15 | 33 | 66% | 14 |
| 5 | 40 | 79% | 21 | 40 | 80% | 21 |
| 6 | 66 | 132% | 47 | 69 | 137% | 50 |
| 7 | 43 | 85% | 24 | 41 | 82% | 22 |
| 9 | 37 | 74% | 18 | 38 | 76% | 19 |
| 10 | 46 | 92% | 27 | 44 | 88% | 25 |
| 11 | 35 | 71% | 16 | 35 | 70% | 16 |
| 12 | 61 | 121% | 42 | 54 | 108% | 35 |
| 13 | 56 | 112% | 37 | 51 | 101% | 32 |
| 14 | 55 | 110% | 36 | 49 | 98% | 30 |
| 15 | 62 | 124% | 43 | 54 | 107% | 35 |
| 16 | 56 | 112% | 37 | 51 | 103% | 33 |
| 17 | 54 | 107% | 35 | 49 | 99% | 30 |
| 18 | 73 | 146% | 54 | 61 | 122% | 42 |
| 19 | 28 | 56% | 9 | 28 | 57% | 10 |
| 21 | 24 | 48% | 5 | 24 | 49% | 5 |
| 22 | 28 | 56% | 9 | 28 | 56% | 9 |
| 23 | 23 | 46% | 4 | 23 | 46% | 4 |
| 24 | 24 | 47% | 5 | 23 | 47% | 4 |
| 25 | 70 | 140% | 51 | 59 | 117% | 40 |
| 26 | 64 | 128% | 45 | 56 | 112% | 37 |
| 27 | 32 | 63% | 13 | 31 | 62% | 12 |
| 28 | 33 | 65% | 14 | 32 | 63% | 13 |
| 29 | 34 | 67% | 15 | 31 | 62% | 12 |
| 30 | 33 | 66% | 14 | 31 | 63% | 13 |
| 31 | 32 | 65% | 13 | 31 | 62% | 12 |
| 32 | 31 | 62% | 12 | 30 | 60% | 11 |
| 33 | 51 | 102% | 32 | 46 | 92% | 27 |
| 34 | 39 | 79% | 21 | 38 | 77% | 20 |
| 35 | 24 | 48% | 5 | 24 | 47% | 5 |

Note: Background values are added to model output and then rounded to the nearest whole number for the purposes of presentation.

¹EPP (Air) objective is 50 µg/m³

3 Interpretation of Air Quality Impacts

Presented in Table 3-3 are results of the dispersion modelling during Year 20. A background level of $18.8 \mu\text{g}/\text{m}^3$ has been included in the ground-level concentration denoted in the 'Total' column of the table.

Dust generating activities during Year 20 are predicted to contribute a maximum of $21 \mu\text{g}/\text{m}^3$ to 24 hour ground-level concentrations of PM_{10} within the township of Moranbah (receptor locations 27 through 31).

Also included in the table is the percentage contribution of the various mining activities on predicted ground-level concentrations of PM_{10} at the receptor locations. Overburden-related dust generating activities which include draglines, overburden and rejects truck dumping, drilling and dozer activities are predicted to contribute to the majority of the predicted ground-level concentration of dust.

Table 3-3 Year 20 Emission Scenario – Fifth Highest 24 Hour Average Ground Level Concentration of PM₁₀ (µg/m³).

| Rec | Total | % of Guideline ¹ | Caval Contribution | Blast | CPP | Coal & Reject Hauling | OB Hauling | OB Activities | Wind Blown Dust |
|-----|-----------|-----------------------------|--------------------|-------|-----|-----------------------|------------|---------------|-----------------|
| 1 | 55 | 110% | 36 | 0% | 4% | 5% | 18% | 73% | 0% |
| 2 | 58 | 115% | 39 | 3% | 7% | 6% | 14% | 70% | 0% |
| 3 | 48 | 95% | 29 | 4% | 5% | 5% | 17% | 68% | 0% |
| 4 | 42 | 84% | 23 | 3% | 14% | 7% | 11% | 65% | 0% |
| 5 | 48 | 97% | 30 | 4% | 16% | 8% | 8% | 64% | 0% |
| 6 | 72 | 143% | 53 | 1% | 51% | 17% | 7% | 24% | 0% |
| 7 | 61 | 123% | 43 | 3% | 6% | 5% | 14% | 72% | 0% |
| 9 | 75 | 151% | 57 | 5% | 6% | 3% | 10% | 76% | 0% |
| 10 | 63 | 126% | 44 | 0% | 6% | 4% | 19% | 71% | 0% |
| 11 | 41 | 83% | 23 | 0% | 8% | 5% | 15% | 72% | 0% |
| 12 | 63 | 127% | 44 | 0% | 6% | 7% | 16% | 71% | 0% |
| 13 | 58 | 116% | 39 | 0% | 7% | 7% | 15% | 71% | 0% |
| 14 | 60 | 119% | 41 | 0% | 9% | 8% | 13% | 69% | 0% |
| 15 | 60 | 120% | 41 | 1% | 15% | 13% | 9% | 62% | 0% |
| 16 | 55 | 109% | 36 | 1% | 8% | 11% | 13% | 68% | 0% |
| 17 | 53 | 106% | 34 | 1% | 7% | 10% | 13% | 69% | 0% |
| 18 | 68 | 135% | 49 | 0% | 5% | 10% | 16% | 69% | 0% |
| 19 | 36 | 72% | 17 | 7% | 1% | 5% | 10% | 77% | 0% |
| 21 | 27 | 54% | 8 | 2% | 10% | 6% | 11% | 72% | 0% |
| 22 | 29 | 57% | 10 | 0% | 27% | 13% | 8% | 51% | 0% |
| 23 | 25 | 49% | 6 | 13% | 11% | 5% | 11% | 61% | 0% |
| 24 | 26 | 51% | 7 | 3% | 8% | 5% | 13% | 72% | 0% |
| 25 | 65 | 130% | 46 | 1% | 10% | 11% | 13% | 65% | 0% |
| 26 | 64 | 128% | 45 | 1% | 6% | 6% | 16% | 71% | 0% |
| 27 | 39 | 78% | 20 | 0% | 11% | 6% | 11% | 72% | 0% |
| 28 | 38 | 77% | 20 | 0% | 10% | 5% | 13% | 73% | 0% |
| 29 | 40 | 80% | 21 | 0% | 9% | 5% | 12% | 74% | 0% |
| 30 | 38 | 76% | 19 | 0% | 10% | 5% | 11% | 75% | 0% |
| 31 | 35 | 70% | 16 | 0% | 9% | 7% | 11% | 73% | 0% |
| 32 | 37 | 74% | 18 | 0% | 10% | 6% | 12% | 71% | 0% |
| 33 | 52 | 104% | 33 | 1% | 11% | 9% | 12% | 67% | 0% |
| 34 | 40 | 81% | 22 | 2% | 14% | 12% | 8% | 64% | 0% |
| 35 | 26 | 53% | 8 | 6% | 10% | 6% | 12% | 66% | 0% |

Note: Numbers in bold exceed the relevant EPP(Air) objective

Note: Background values are added to model output and then rounded to the nearest whole number for the purposes of presentation.

¹EPP(Air) Objective is 50 µg/m³

Presented in Figure 3-5 through Figure 3-7 are contour plots of the fifth highest 24-hour average ground-level concentration of PM₁₀ for Year 1, Year 2 and Year 20 respectively.

3 Interpretation of Air Quality Impacts

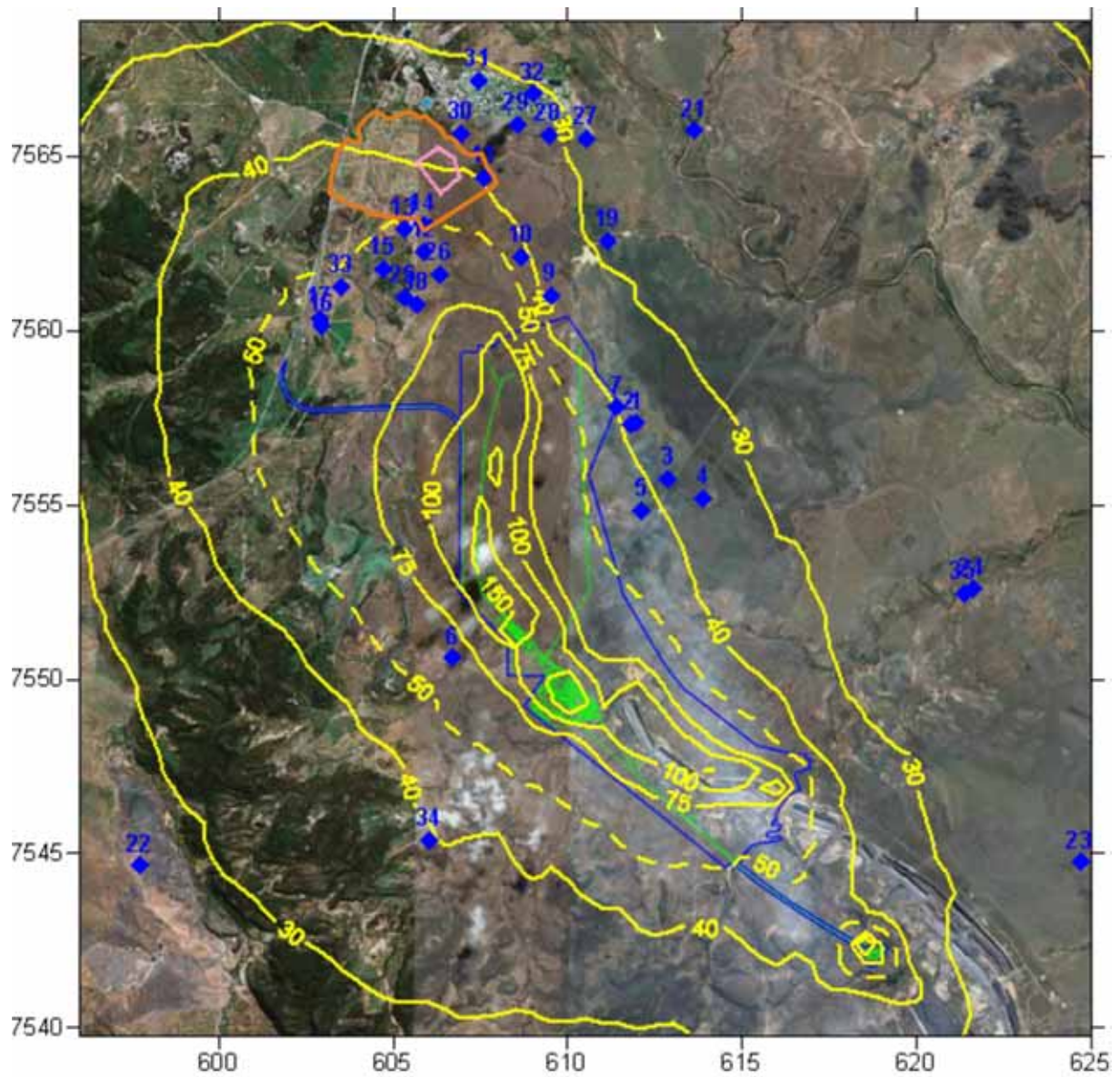


Figure 3-5 Fifth Highest 24-hour Average Ground-Level Concentration of PM₁₀ for Year 1. EPP(Air) objective is 50 µg/m³ (dashed line).

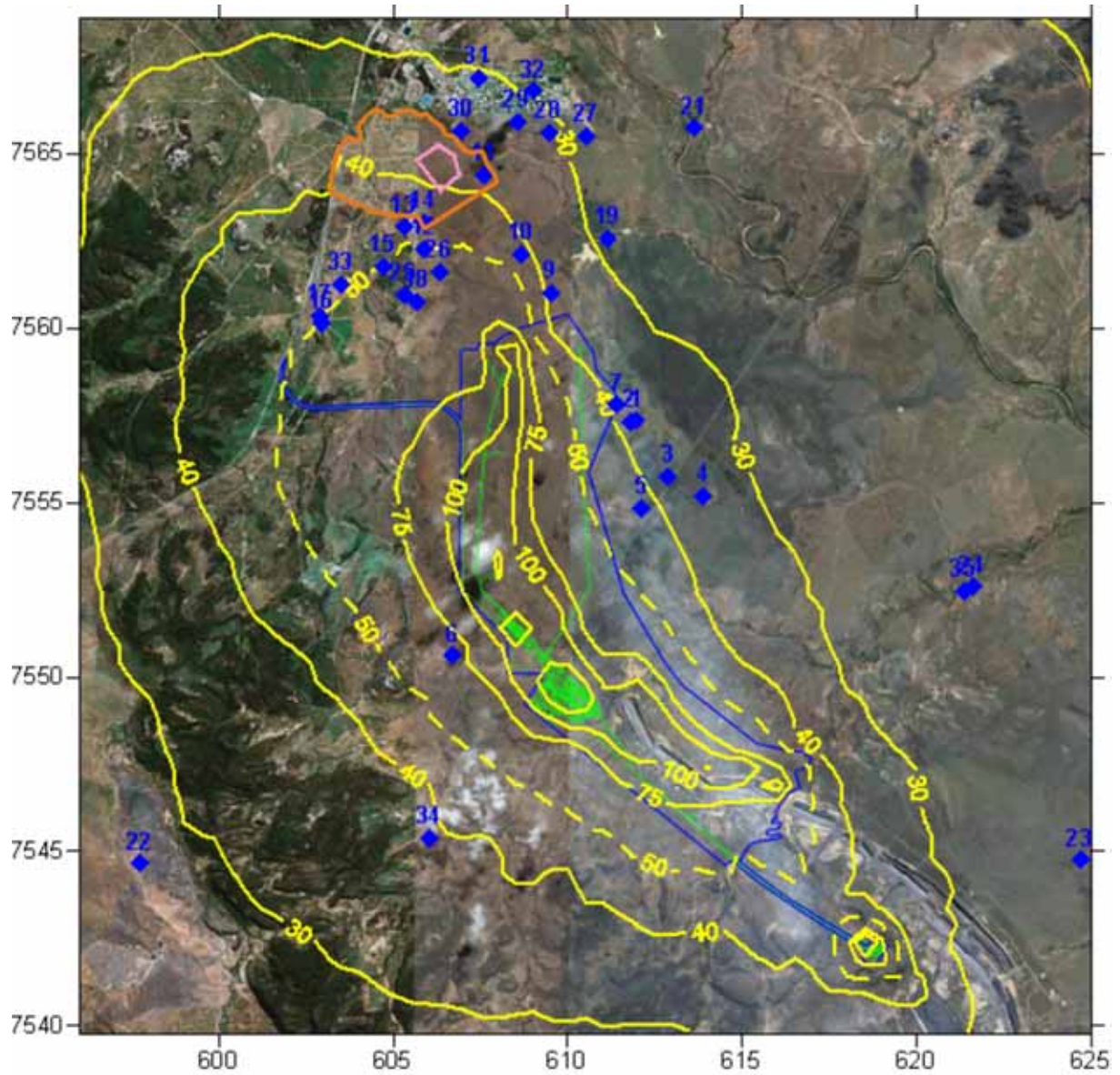


Figure 3-6 Fifth Highest 24-hour Average Ground-Level Concentration of PM₁₀ for Year 2. EPP(Air) objective is 50 µg/m³ (dashed line).

3 Interpretation of Air Quality Impacts

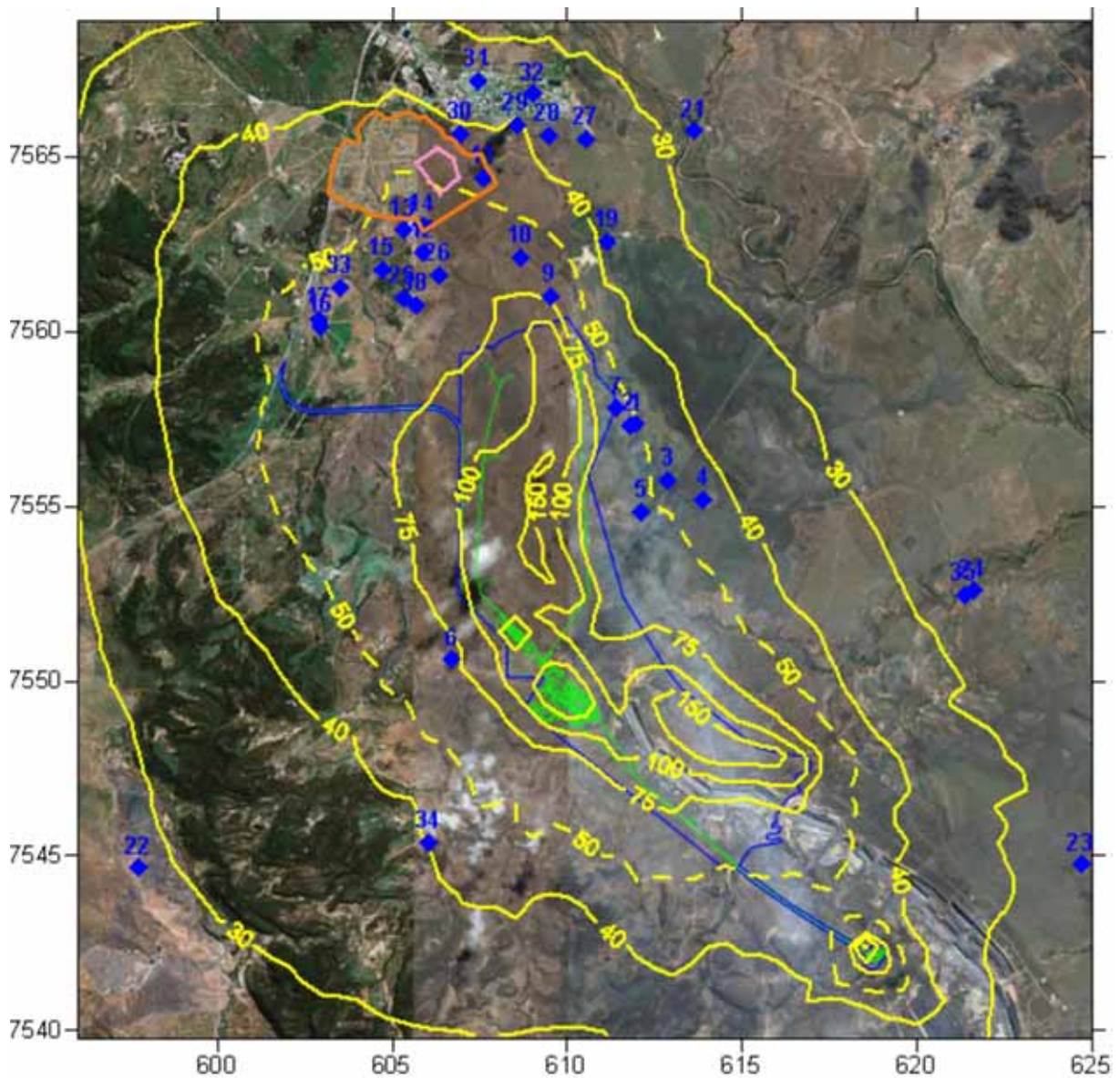


Figure 3-7 Fifth Highest 24-hour Average Ground-Level Concentration of PM₁₀ for Year 20. EPP(Air) objective is 50 µg/m³ (dashed line).

3.2.3 Particulate Matter as PM_{2.5}

Presented in Table 3-4 is the maximum 24-hour average ground-level concentration of PM_{2.5} at the receptor locations. Results suggest that the EPP(Air) objective of 25 µg/m³ will not be exceeded at any of the receptor locations for the three years modelled. The maximum predicted contribution to ground-level concentration of PM_{2.5} due to the Caval Ridge project is 14 µg/m³ at receptor location 9 during Year 20. The maximum predicted project contribution to the ground-level concentration of PM_{2.5} within Moranbah (receptor locations 27 through 31) is 6 µg/m³ during Year 20. As discussed in the EIS, the existing background concentration of PM_{2.5} is 2.9 µg/m³. This has been included in the ground-level concentration denoted in the 'Total' column of the table.

Presented in Table 3-5 is the annual average ground-level concentration of $PM_{2.5}$ at each of the receptor locations. Results suggest that the EPP(Air) objective of $8 \mu\text{g}/\text{m}^3$ will not be exceeded at any of the receptor locations for the three years modelled. A background level of $1.6 \mu\text{g}/\text{m}^3$ has been included in the ground-level concentration denoted in the 'Total' column of the table.

Presented in Figure 3-8 through Figure 3-10 are contour plots of the maximum 24-hour average ground-level concentration of $PM_{2.5}$ for Year 1, Year 2 and Year 20 respectively.

Presented in Figure 3-11 through Figure 3-13 are contour plots of the annual average ground-level concentration of $PM_{2.5}$ for Year 1, Year 2 and Year 20 respectively.

3 Interpretation of Air Quality Impacts

Table 3-4 Maximum 24 Hour Average Ground Level Concentration of PM_{2.5} (µg/m³).

| Rec | Year 1 | | | Year 2 | | | Year 20 | | |
|-----|--------|------------------------------|--------------------|--------|------------------------------|--------------------|---------|------------------------------|--------------------|
| | Total | % of Guide-line ¹ | Caval Contribution | Total | % of Guide-line ¹ | Caval Contribution | Total | % of Guide-line ¹ | Caval Contribution |
| 1 | 8 | 28% | 6 | 8 | 26% | 5 | 11 | 37% | 8 |
| 2 | 9 | 29% | 6 | 8 | 26% | 5 | 12 | 39% | 9 |
| 3 | 7 | 24% | 4 | 7 | 24% | 4 | 9 | 31% | 7 |
| 4 | 6 | 21% | 3 | 6 | 22% | 4 | 8 | 27% | 5 |
| 5 | 7 | 25% | 5 | 7 | 24% | 4 | 10 | 32% | 7 |
| 6 | 14 | 46% | 11 | 14 | 48% | 12 | 15 | 51% | 12 |
| 7 | 8 | 28% | 6 | 8 | 26% | 5 | 13 | 42% | 10 |
| 9 | 9 | 29% | 6 | 9 | 30% | 6 | 17 | 56% | 14 |
| 10 | 9 | 31% | 6 | 9 | 30% | 6 | 16 | 52% | 13 |
| 11 | 8 | 26% | 5 | 8 | 27% | 5 | 10 | 33% | 7 |
| 12 | 15 | 48% | 12 | 12 | 41% | 9 | 13 | 45% | 10 |
| 13 | 13 | 42% | 10 | 11 | 36% | 8 | 12 | 40% | 9 |
| 14 | 12 | 41% | 10 | 11 | 37% | 8 | 13 | 42% | 10 |
| 15 | 12 | 41% | 10 | 11 | 36% | 8 | 12 | 40% | 9 |
| 16 | 11 | 37% | 8 | 10 | 32% | 7 | 11 | 37% | 8 |
| 17 | 11 | 35% | 8 | 9 | 31% | 6 | 11 | 36% | 8 |
| 18 | 15 | 51% | 12 | 13 | 43% | 10 | 14 | 45% | 11 |
| 19 | 6 | 18% | 3 | 5 | 18% | 3 | 8 | 27% | 5 |
| 21 | 4 | 14% | 1 | 4 | 14% | 1 | 5 | 18% | 3 |
| 22 | 5 | 16% | 2 | 5 | 16% | 2 | 5 | 17% | 2 |
| 23 | 4 | 14% | 1 | 4 | 14% | 1 | 5 | 15% | 2 |
| 24 | 4 | 15% | 1 | 4 | 15% | 2 | 5 | 17% | 2 |
| 25 | 14 | 47% | 11 | 12 | 41% | 9 | 13 | 44% | 10 |
| 26 | 15 | 50% | 12 | 13 | 43% | 10 | 13 | 45% | 10 |
| 27 | 6 | 21% | 3 | 6 | 20% | 3 | 8 | 28% | 6 |
| 28 | 7 | 22% | 4 | 6 | 21% | 3 | 8 | 28% | 6 |
| 29 | 7 | 22% | 4 | 6 | 21% | 3 | 9 | 31% | 6 |
| 30 | 7 | 25% | 5 | 7 | 25% | 5 | 9 | 30% | 6 |
| 31 | 7 | 23% | 4 | 7 | 22% | 4 | 9 | 31% | 6 |
| 32 | 6 | 21% | 3 | 6 | 20% | 3 | 8 | 26% | 5 |
| 33 | 10 | 33% | 7 | 9 | 30% | 6 | 10 | 34% | 7 |
| 34 | 7 | 25% | 5 | 7 | 25% | 5 | 8 | 27% | 5 |
| 35 | 5 | 15% | 2 | 5 | 15% | 2 | 5 | 18% | 3 |

Note: Background values are added to model output and then rounded to the nearest whole number for the purposes of presentation.

¹EPP(Air) Objective is 25 µg/m³.

Table 3-5 Annual Average Concentration of PM_{2.5} (µg/m³).

| Rec | Year 1 | | | Year 2 | | | Year 20 | | |
|-----|--------|------------------------------|-------|--------|------------------------------|-------|---------|------------------------------|-------|
| | Total | % of Guide-line ¹ | Caval | Total | % of Guide-line ¹ | Caval | Total | % of Guide-line ¹ | Caval |
| 1 | 2 | 28% | 1 | 2 | 28% | 1 | 3 | 35% | 1 |
| 2 | 2 | 29% | 1 | 2 | 28% | 1 | 3 | 36% | 1 |
| 3 | 2 | 27% | 1 | 2 | 27% | 1 | 3 | 33% | 1 |
| 4 | 2 | 25% | 0 | 2 | 25% | 0 | 2 | 29% | 1 |
| 5 | 2 | 30% | 1 | 2 | 29% | 1 | 3 | 38% | 1 |
| 6 | 5 | 66% | 4 | 5 | 68% | 4 | 6 | 69% | 4 |
| 7 | 2 | 29% | 1 | 2 | 28% | 1 | 3 | 37% | 1 |
| 9 | 2 | 26% | 0 | 2 | 26% | 0 | 3 | 35% | 1 |
| 10 | 2 | 27% | 1 | 2 | 27% | 1 | 3 | 35% | 1 |
| 11 | 2 | 25% | 0 | 2 | 24% | 0 | 2 | 28% | 1 |
| 12 | 3 | 39% | 2 | 3 | 36% | 1 | 4 | 47% | 2 |
| 13 | 3 | 36% | 1 | 3 | 34% | 1 | 3 | 43% | 2 |
| 14 | 3 | 34% | 1 | 3 | 32% | 1 | 3 | 41% | 2 |
| 15 | 4 | 46% | 2 | 3 | 41% | 2 | 4 | 50% | 2 |
| 16 | 4 | 51% | 2 | 4 | 45% | 2 | 4 | 51% | 2 |
| 17 | 4 | 49% | 2 | 3 | 43% | 2 | 4 | 50% | 2 |
| 18 | 5 | 56% | 3 | 4 | 48% | 2 | 5 | 59% | 3 |
| 19 | 2 | 23% | 0 | 2 | 23% | 0 | 2 | 25% | 0 |
| 21 | 2 | 21% | 0 | 2 | 21% | 0 | 2 | 22% | 0 |
| 22 | 2 | 25% | 0 | 2 | 25% | 0 | 2 | 25% | 0 |
| 23 | 2 | 21% | 0 | 2 | 21% | 0 | 2 | 21% | 0 |
| 24 | 2 | 21% | 0 | 2 | 21% | 0 | 2 | 21% | 0 |
| 25 | 4 | 54% | 3 | 4 | 47% | 2 | 4 | 56% | 3 |
| 26 | 3 | 41% | 2 | 3 | 38% | 1 | 4 | 51% | 2 |
| 27 | 2 | 23% | 0 | 2 | 23% | 0 | 2 | 25% | 0 |
| 28 | 2 | 23% | 0 | 2 | 23% | 0 | 2 | 25% | 0 |
| 29 | 2 | 23% | 0 | 2 | 23% | 0 | 2 | 25% | 0 |
| 30 | 2 | 24% | 0 | 2 | 24% | 0 | 2 | 27% | 1 |
| 31 | 2 | 23% | 0 | 2 | 23% | 0 | 2 | 25% | 0 |
| 32 | 2 | 23% | 0 | 2 | 23% | 0 | 2 | 25% | 0 |
| 33 | 4 | 44% | 2 | 3 | 40% | 2 | 4 | 47% | 2 |
| 34 | 2 | 31% | 1 | 3 | 31% | 1 | 3 | 32% | 1 |
| 35 | 2 | 21% | 0 | 2 | 21% | 0 | 2 | 21% | 0 |

Note: Background values are added to model output and then rounded to the nearest whole number for the purposes of presentation.

¹EPP(Air) Objective is 8 µg/m³.

3 Interpretation of Air Quality Impacts

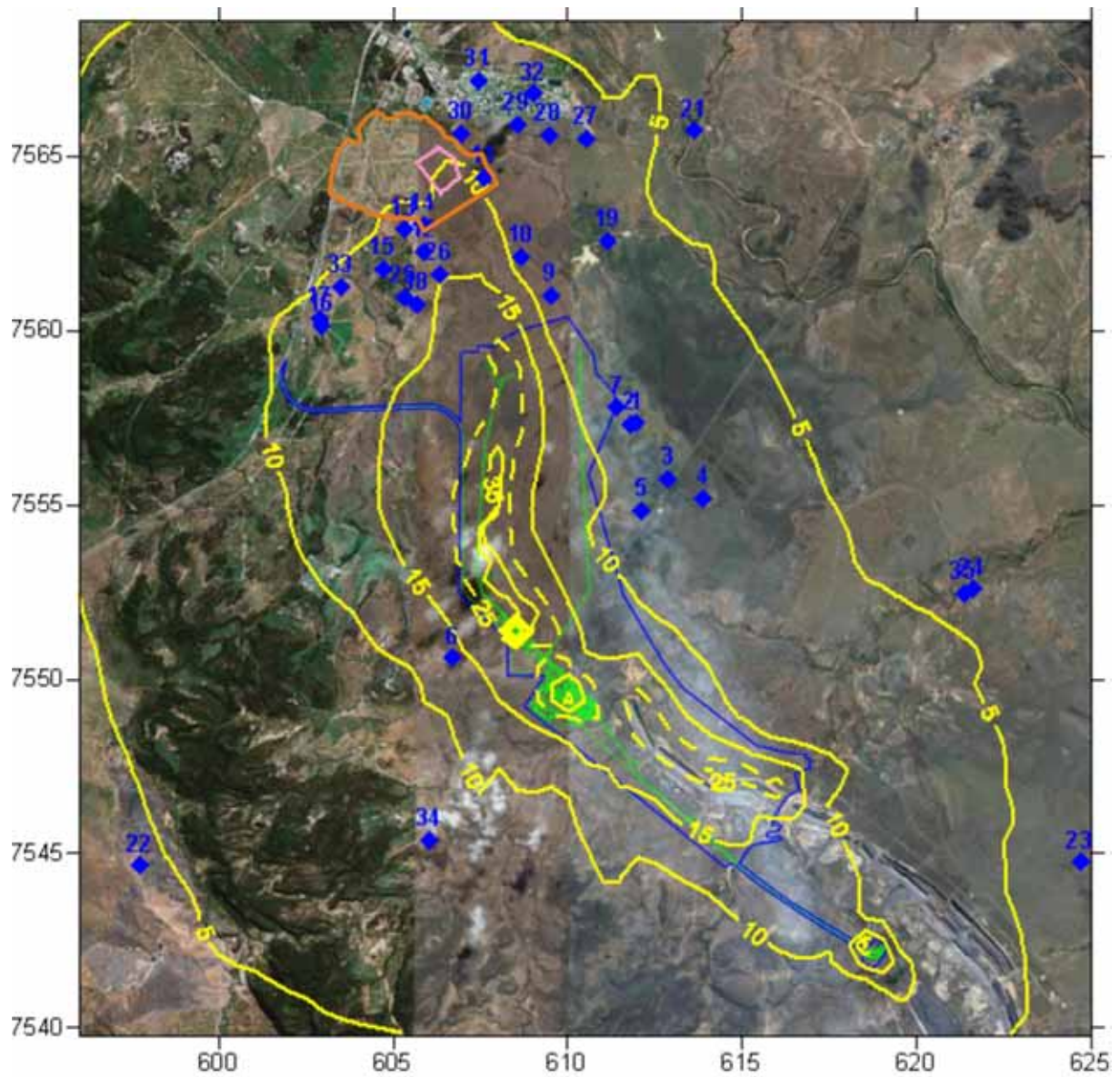


Figure 3-8 Maximum 24-hour Average Ground-Level Concentration of PM_{2.5} for Year 1. EPP(Air) objective is 25 µg/m³ (dashed line).

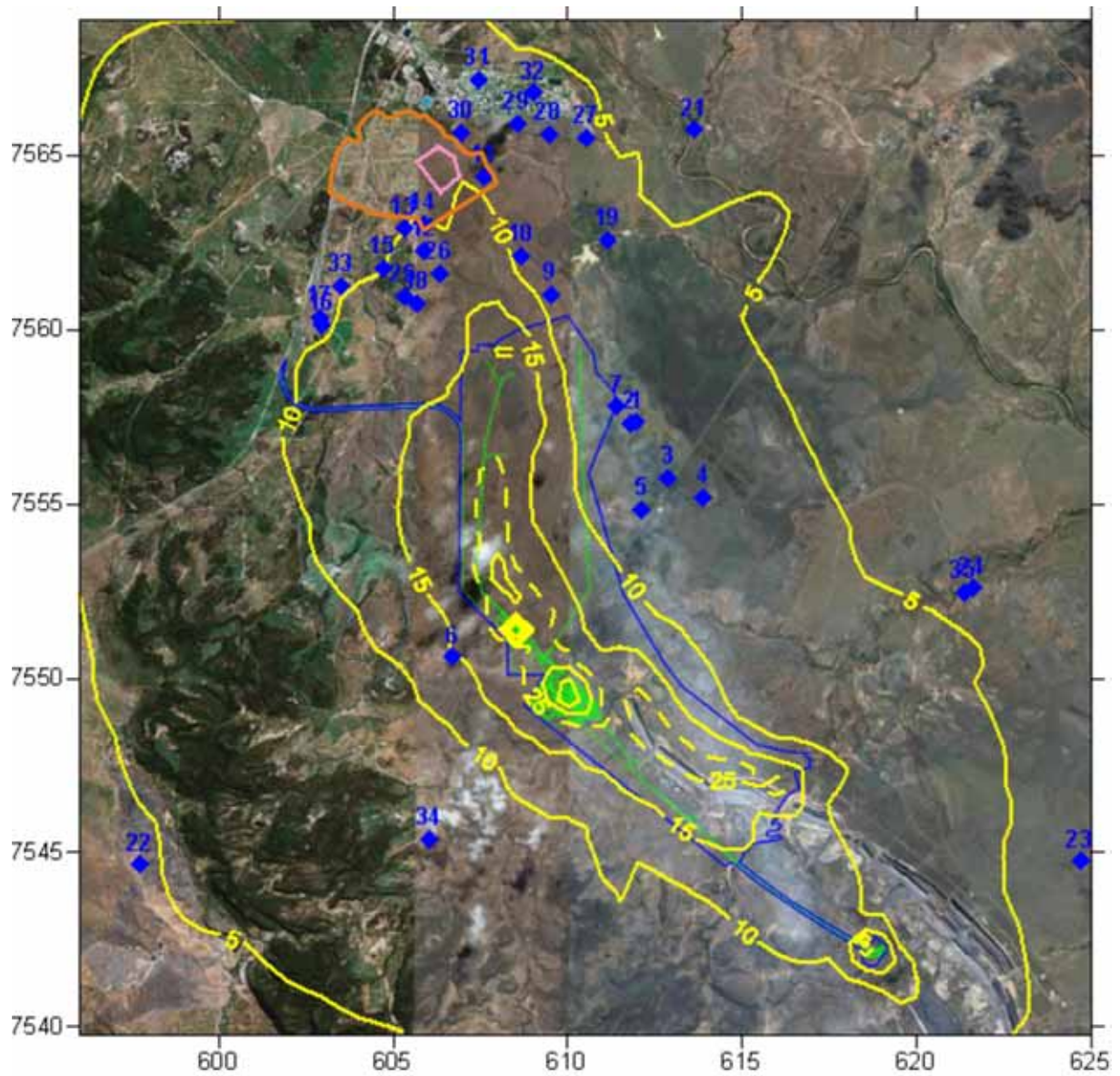


Figure 3-9 Maximum 24-hour Average Ground-Level Concentration of PM_{2.5} for Year 2. EPP(Air) objective is 25 µg/m³ (dashed line).

3 Interpretation of Air Quality Impacts

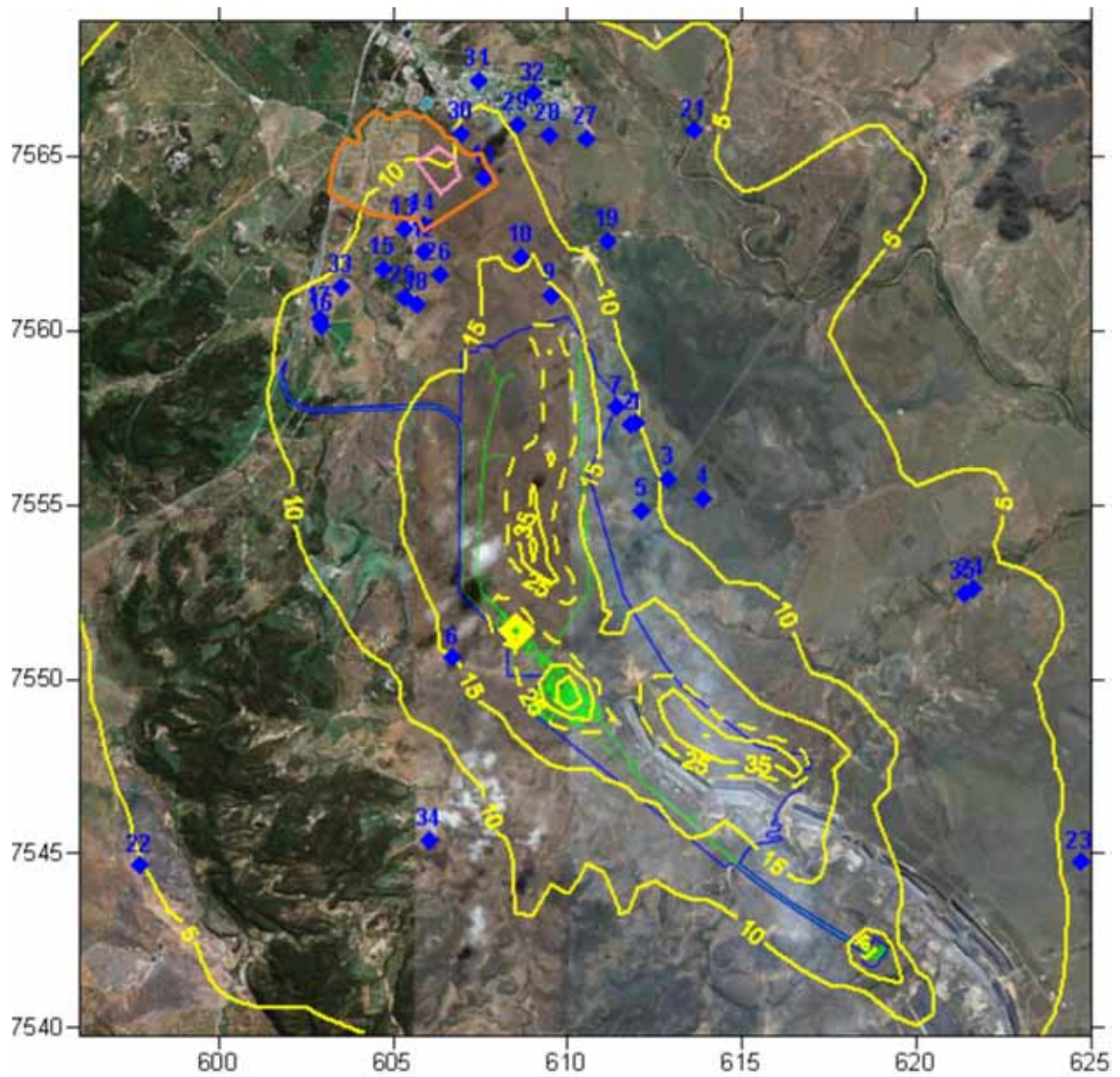


Figure 3-10 Maximum 24-hour Average Ground-Level Concentration of PM_{2.5} for Year 20. EPP(Air) objective is 25 µg/m³ (dashed line).

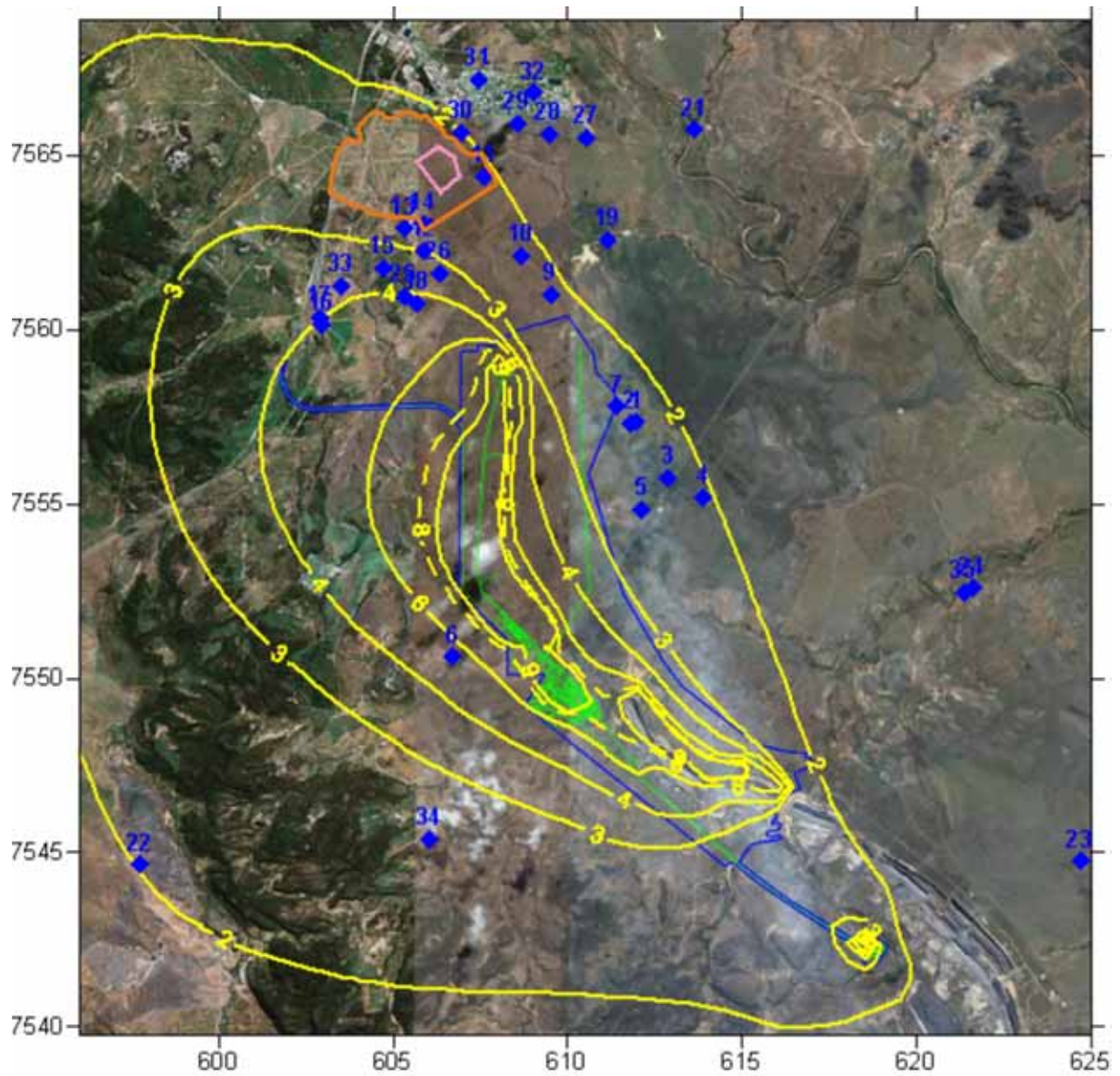


Figure 3-11 Annual Average Ground-Level Concentration of PM_{2.5} for Year 1. EPP(Air) objective is 8 µg/m³ (dashed line).

3 Interpretation of Air Quality Impacts

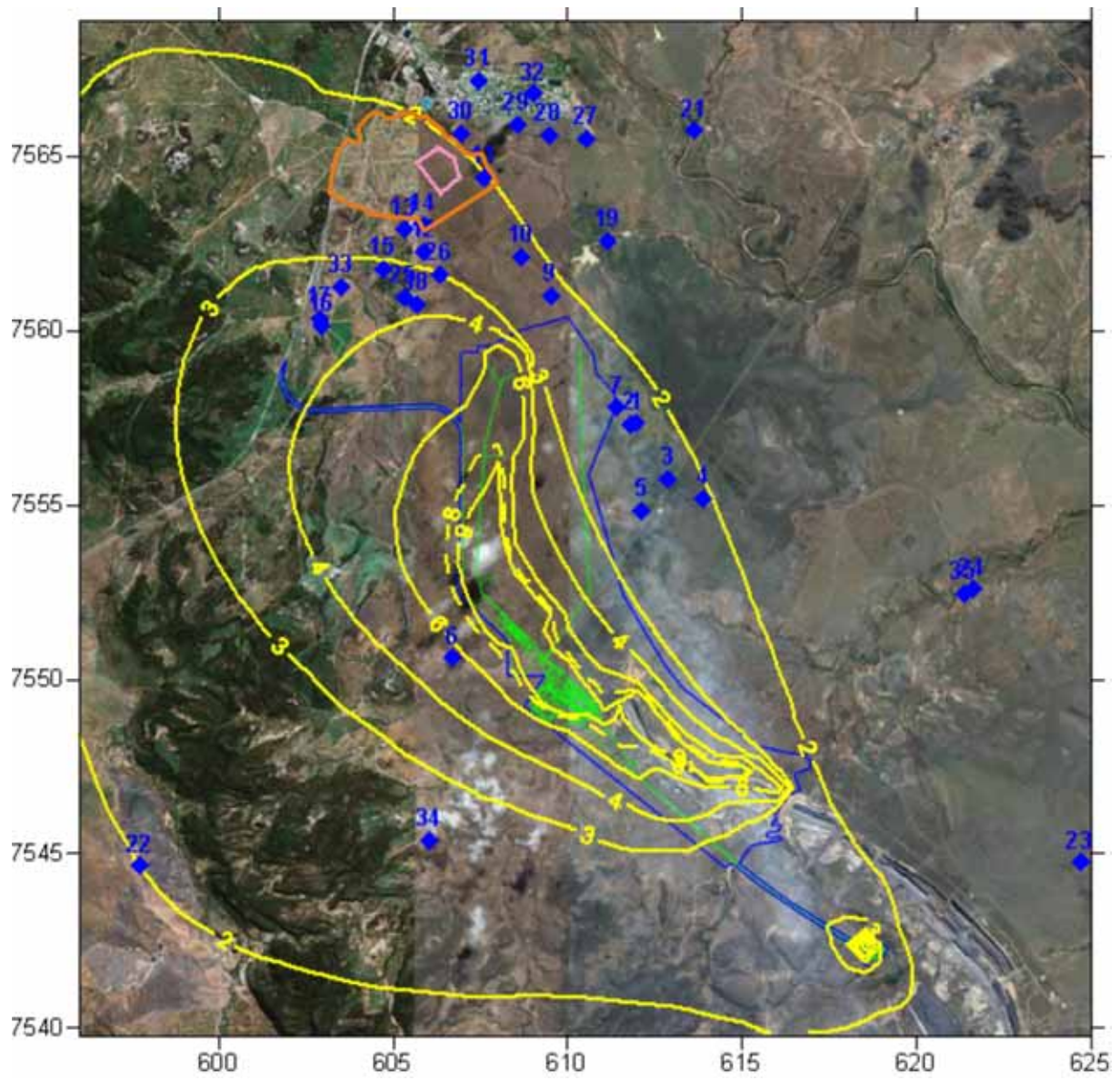


Figure 3-12 Annual Average Ground-Level Concentration of PM_{2.5} for Year 2. EPP(Air) objective is 8 µg/m³ (dashed line).

3 Interpretation of Air Quality Impacts

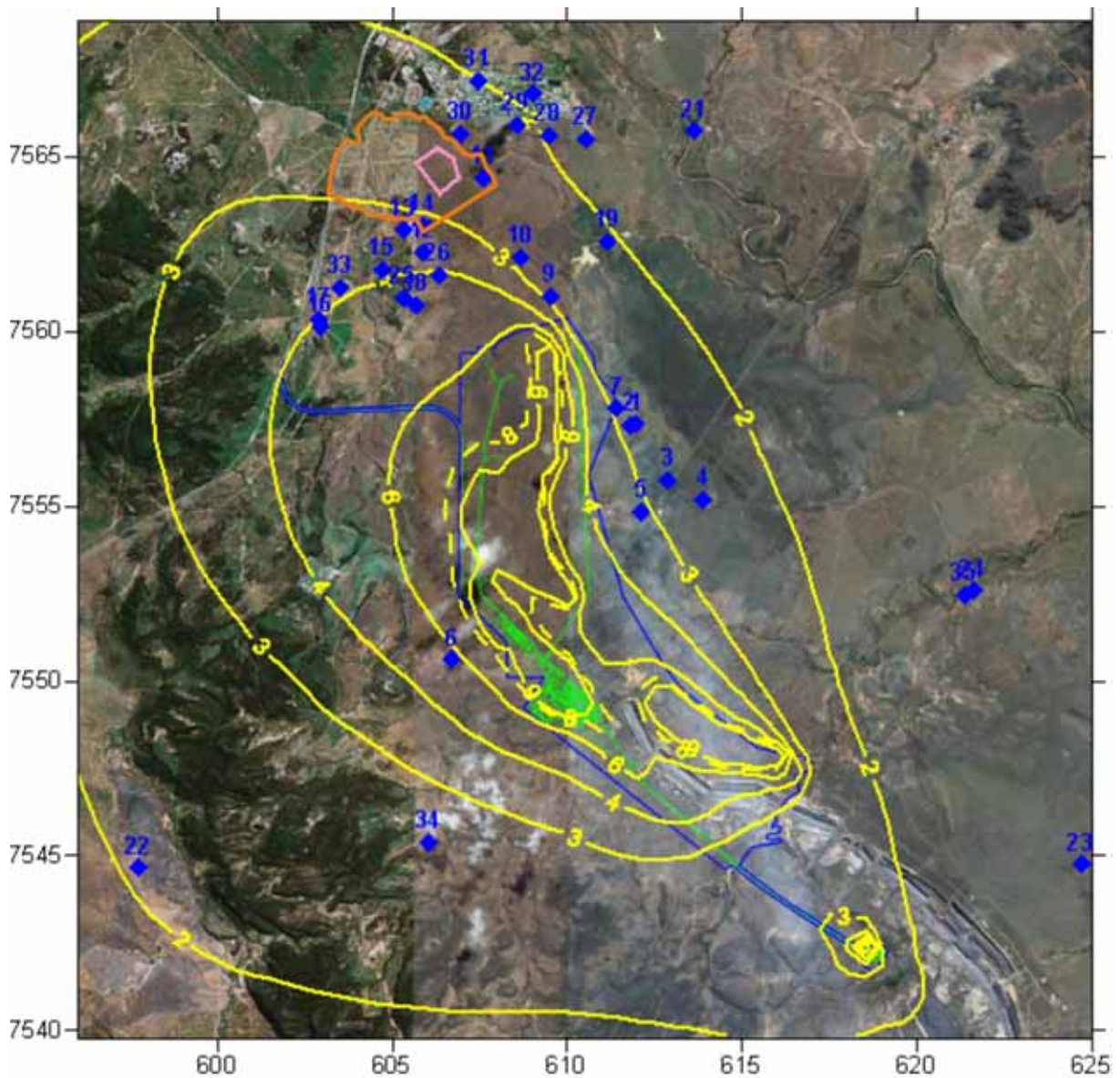


Figure 3-13 Annual Average Ground-Level Concentration of PM_{2.5} for Year 20. EPP(Air) objective is 8 µg/m³ (dashed line).

3.2.4 Dust Deposition

Presented in Table 3-6 are the results for the predicted dust deposition at receptor locations for Year 1, Year 2 and Year 20. Results suggest that dust deposition will remain below the project goal of 4 g/m²/month at all locations. As discussed in the EIS, the existing background concentration of dust deposition is 1.5 g/m²/month. This has been included in the 'Total' column of the table.

Presented in Figure 3-14 is a contour plot of the monthly dust deposition for Year 20.

3 Interpretation of Air Quality Impacts

Table 3-6 Monthly Annual Average Dust Deposition (g/m²/month)

| Rec | Year 1 | | | Year 2 | | | Year 20 | | |
|-----|--------|------------------------------|--------------------|--------|------------------------------|--------------------|---------|------------------------------|--------------------|
| | Total | % of Guide-line ¹ | Caval Contribution | Total | % of Guide-line ¹ | Caval Contribution | Total | % of Guide-line ¹ | Caval Contribution |
| 1 | 1.6 | 40% | 0.1 | 1.6 | 40% | 0.1 | 1.6 | 40% | 0.1 |
| 2 | 1.6 | 40% | 0.1 | 1.6 | 40% | 0.1 | 1.6 | 40% | 0.1 |
| 3 | 1.6 | 40% | 0.1 | 1.6 | 40% | 0.1 | 1.6 | 40% | 0.1 |
| 4 | 1.6 | 39% | 0.1 | 1.6 | 39% | 0.1 | 1.6 | 39% | 0.1 |
| 5 | 1.6 | 41% | 0.1 | 1.6 | 41% | 0.1 | 1.6 | 41% | 0.1 |
| 6 | 2.2 | 55% | 0.7 | 2.3 | 57% | 0.8 | 2.3 | 57% | 0.8 |
| 7 | 1.6 | 40% | 0.1 | 1.6 | 40% | 0.1 | 1.6 | 40% | 0.1 |
| 9 | 1.6 | 39% | 0.1 | 1.6 | 40% | 0.1 | 1.6 | 40% | 0.1 |
| 10 | 1.6 | 40% | 0.1 | 1.6 | 40% | 0.1 | 1.6 | 40% | 0.1 |
| 11 | 1.5 | 39% | 0.0 | 1.6 | 39% | 0.1 | 1.6 | 39% | 0.1 |
| 12 | 1.7 | 43% | 0.2 | 1.8 | 44% | 0.3 | 1.8 | 44% | 0.3 |
| 13 | 1.7 | 42% | 0.2 | 1.7 | 43% | 0.2 | 1.7 | 43% | 0.2 |
| 14 | 1.6 | 41% | 0.1 | 1.7 | 42% | 0.2 | 1.7 | 42% | 0.2 |
| 15 | 1.8 | 45% | 0.3 | 1.9 | 47% | 0.4 | 1.9 | 47% | 0.4 |
| 16 | 1.8 | 46% | 0.3 | 1.9 | 48% | 0.4 | 1.9 | 48% | 0.4 |
| 17 | 1.8 | 46% | 0.3 | 1.9 | 47% | 0.4 | 1.9 | 47% | 0.4 |
| 18 | 2.0 | 50% | 0.5 | 2.1 | 52% | 0.6 | 2.1 | 52% | 0.6 |
| 19 | 1.5 | 38% | 0.0 | 1.5 | 38% | 0.0 | 1.5 | 38% | 0.0 |
| 21 | 1.5 | 38% | 0.0 | 1.5 | 38% | 0.0 | 1.5 | 38% | 0.0 |
| 22 | 1.5 | 39% | 0.0 | 1.5 | 39% | 0.0 | 1.5 | 39% | 0.0 |
| 23 | 1.5 | 38% | 0.0 | 1.5 | 38% | 0.0 | 1.5 | 38% | 0.0 |
| 24 | 1.5 | 38% | 0.0 | 1.5 | 38% | 0.0 | 1.5 | 38% | 0.0 |
| 25 | 1.9 | 49% | 0.4 | 2.0 | 51% | 0.5 | 2.0 | 51% | 0.5 |
| 26 | 1.8 | 44% | 0.3 | 1.8 | 46% | 0.3 | 1.8 | 46% | 0.3 |
| 27 | 1.5 | 38% | 0.0 | 1.5 | 38% | 0.0 | 1.5 | 38% | 0.0 |
| 28 | 1.5 | 38% | 0.0 | 1.5 | 39% | 0.0 | 1.5 | 39% | 0.0 |
| 29 | 1.5 | 38% | 0.0 | 1.5 | 39% | 0.0 | 1.5 | 39% | 0.0 |
| 30 | 1.5 | 38% | 0.0 | 1.6 | 39% | 0.1 | 1.6 | 39% | 0.1 |
| 31 | 1.5 | 39% | 0.0 | 1.6 | 39% | 0.1 | 1.6 | 39% | 0.1 |
| 32 | 1.5 | 39% | 0.0 | 1.6 | 39% | 0.1 | 1.6 | 39% | 0.1 |
| 33 | 1.8 | 45% | 0.3 | 1.9 | 46% | 0.4 | 1.9 | 46% | 0.4 |
| 34 | 1.6 | 40% | 0.1 | 1.6 | 41% | 0.1 | 1.6 | 41% | 0.1 |
| 35 | 1.5 | 38% | 0.0 | 3.1 | 77% | 1.6 | 3.1 | 77% | 1.6 |

Note: Background values are added to model output and then rounded to the nearest whole number for the purposes of presentation.

¹Project goal is 4g/m²/month.

3 Interpretation of Air Quality Impacts

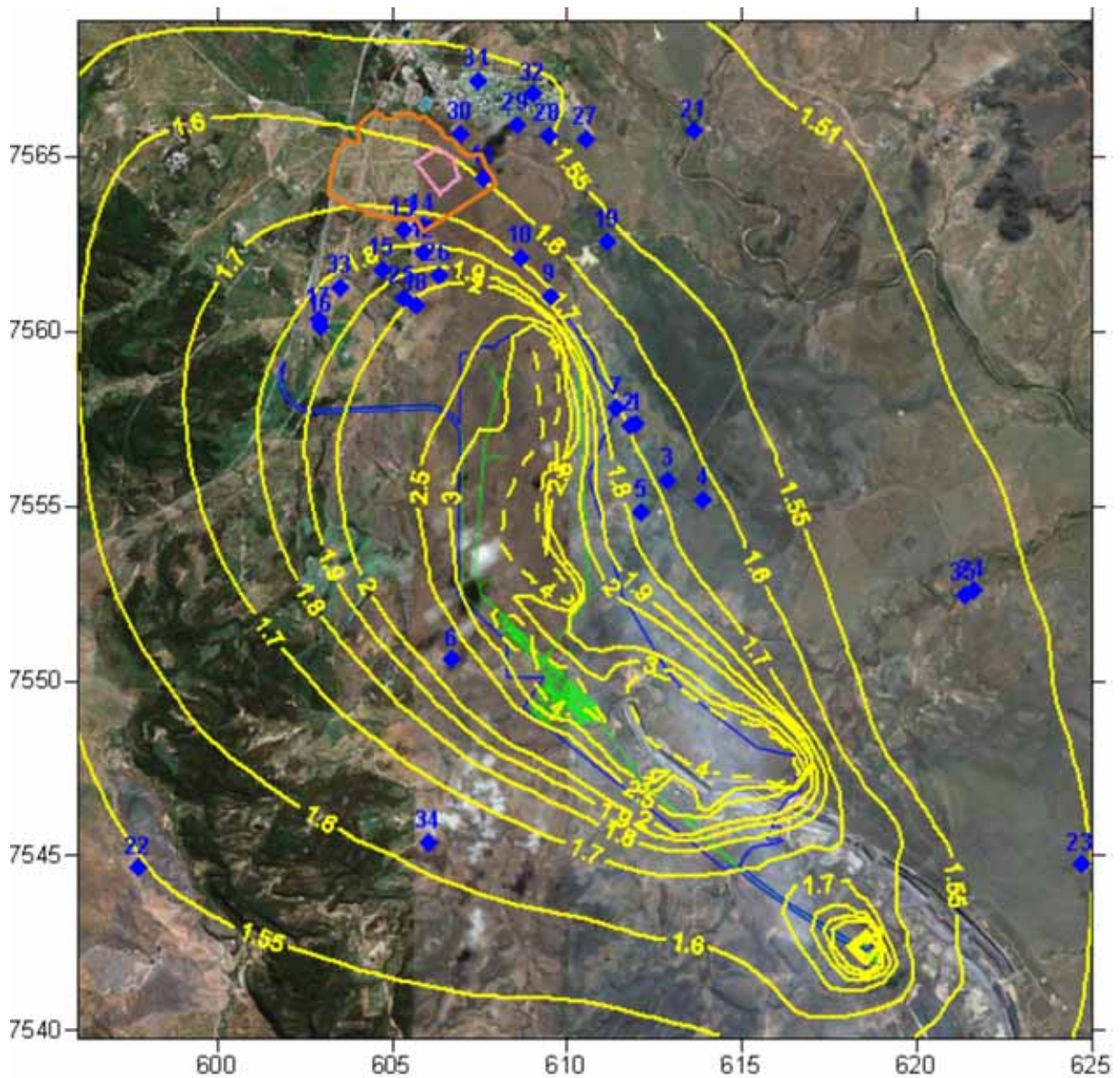


Figure 3-14 Monthly Dust Deposition for Year 20. Project goal is 4 g/m²/month (dashed line).

3.3 Worst-Case 24 Hour Emissions Scenario

The reader is directed to Appendix L of the Caval Ridge EIS for more details of the worst-case 24 hour emissions scenarios.

A discussion regarding the likelihood of the impacts associated with these worst-case dust emission scenarios is presented in Section 3.3.3.

3.3.1 Worst-Case North Scenario

Presented in Table 3-7 are the results for the predicted fifth highest ground-level concentration of PM₁₀ for Year 1, Year 2 and Year 20 based on the worst-case north scenario. A background concentration of 18.8 µg/m³ has been included in the 'Total' column of the table.

3 Interpretation of Air Quality Impacts

Results suggest that the ground-level concentrations of PM₁₀ associated with the worst-case north scenario has the potential to exceed the EPP(Air) goal of 50 µg/m³ at locations to the northwest of the Horse Pit for all years modelled.

Ground-level concentrations of PM₁₀ are predicted to exceed the EPP(Air) goal of 50 µg/m³ at receptor location 28 (51 µg/m³) and location 29 (51 µg/m³) which are within the Township of Moranbah (receptors 27 through 31).

Presented in Figure 3-15 through Figure 3-17 are contour plots of the fifth-highest 24-hour average ground-level concentrations of PM₁₀ based on the worst-case north operational conditions. A background concentration of 18.8 µg/m³ has been included in the figures.

Table 3-7 Worst Case North Scenario - Fifth Highest Ground-Level Concentration of PM₁₀ (µg/m³).

| Rec | Year 1 | | | Year 2 | | | Year 20 | | |
|-----|-----------|------------------------------|--------------------|-----------|------------------------------|--------------------|------------|------------------------------|--------------------|
| | Total | % of Guide-line ¹ | Caval Contribution | Total | % of Guide-line ¹ | Caval Contribution | Total | % of Guide-line ¹ | Caval Contribution |
| 1 | 47 | 94% | 28 | 47 | 94% | 28 | 75 | 150% | 56 |
| 2 | 48 | 96% | 29 | 48 | 96% | 29 | 76 | 152% | 57 |
| 3 | 41 | 82% | 22 | 44 | 88% | 25 | 57 | 115% | 39 |
| 4 | 36 | 72% | 17 | 40 | 80% | 21 | 45 | 89% | 26 |
| 5 | 44 | 87% | 25 | 44 | 88% | 25 | 53 | 106% | 34 |
| 6 | 69 | 137% | 50 | 76 | 152% | 57 | 69 | 137% | 50 |
| 7 | 50 | 101% | 32 | 44 | 88% | 25 | 89 | 178% | 70 |
| 9 | 46 | 93% | 28 | 39 | 77% | 20 | 140 | 280% | 121 |
| 10 | 59 | 118% | 40 | 41 | 82% | 22 | 101 | 203% | 83 |
| 11 | 44 | 88% | 25 | 33 | 66% | 14 | 57 | 113% | 38 |
| 12 | 85 | 171% | 67 | 53 | 106% | 34 | 80 | 160% | 61 |
| 13 | 75 | 149% | 56 | 48 | 97% | 30 | 75 | 151% | 56 |
| 14 | 67 | 134% | 48 | 47 | 94% | 28 | 79 | 158% | 60 |
| 15 | 78 | 157% | 60 | 59 | 117% | 40 | 72 | 144% | 53 |
| 16 | 64 | 127% | 45 | 64 | 128% | 45 | 59 | 118% | 40 |
| 17 | 63 | 125% | 44 | 61 | 122% | 42 | 57 | 115% | 39 |
| 18 | 96 | 191% | 77 | 64 | 127% | 45 | 81 | 162% | 62 |
| 19 | 31 | 63% | 13 | 30 | 60% | 11 | 44 | 88% | 25 |
| 21 | 24 | 48% | 5 | 26 | 52% | 7 | 28 | 55% | 9 |
| 22 | 27 | 55% | 9 | 31 | 61% | 12 | 28 | 57% | 9 |
| 23 | 22 | 44% | 3 | 25 | 50% | 6 | 24 | 48% | 5 |
| 24 | 24 | 48% | 5 | 25 | 51% | 7 | 26 | 53% | 8 |
| 25 | 86 | 173% | 68 | 63 | 126% | 44 | 78 | 156% | 59 |
| 26 | 91 | 183% | 73 | 52 | 104% | 33 | 90 | 179% | 71 |
| 27 | 36 | 71% | 17 | 32 | 65% | 14 | 48 | 96% | 29 |
| 28 | 38 | 75% | 19 | 33 | 66% | 14 | 51 | 101% | 32 |
| 29 | 37 | 73% | 18 | 32 | 64% | 13 | 52 | 103% | 33 |
| 30 | 39 | 78% | 20 | 31 | 62% | 12 | 48 | 97% | 30 |
| 31 | 37 | 75% | 19 | 31 | 63% | 13 | 43 | 86% | 24 |
| 32 | 35 | 70% | 16 | 31 | 62% | 12 | 46 | 92% | 27 |
| 33 | 62 | 124% | 43 | 54 | 108% | 35 | 61 | 121% | 42 |

3 Interpretation of Air Quality Impacts

| Rec | Year 1 | | | Year 2 | | | Year 20 | | |
|-----|--------|------------------------------|--------------------|--------|------------------------------|--------------------|---------|------------------------------|--------------------|
| | Total | % of Guide-line ¹ | Caval Contribution | Total | % of Guide-line ¹ | Caval Contribution | Total | % of Guide-line ¹ | Caval Contribution |
| 34 | 40 | 81% | 22 | 42 | 85% | 24 | 41 | 83% | 23 |
| 35 | 25 | 49% | 6 | 26 | 51% | 7 | 27 | 54% | 8 |

Note (1) Numbers in bold indicate predicted levels exceed the relevant EPP(Air) objective.
¹EPP(Air) Objective is 50 µg/m³

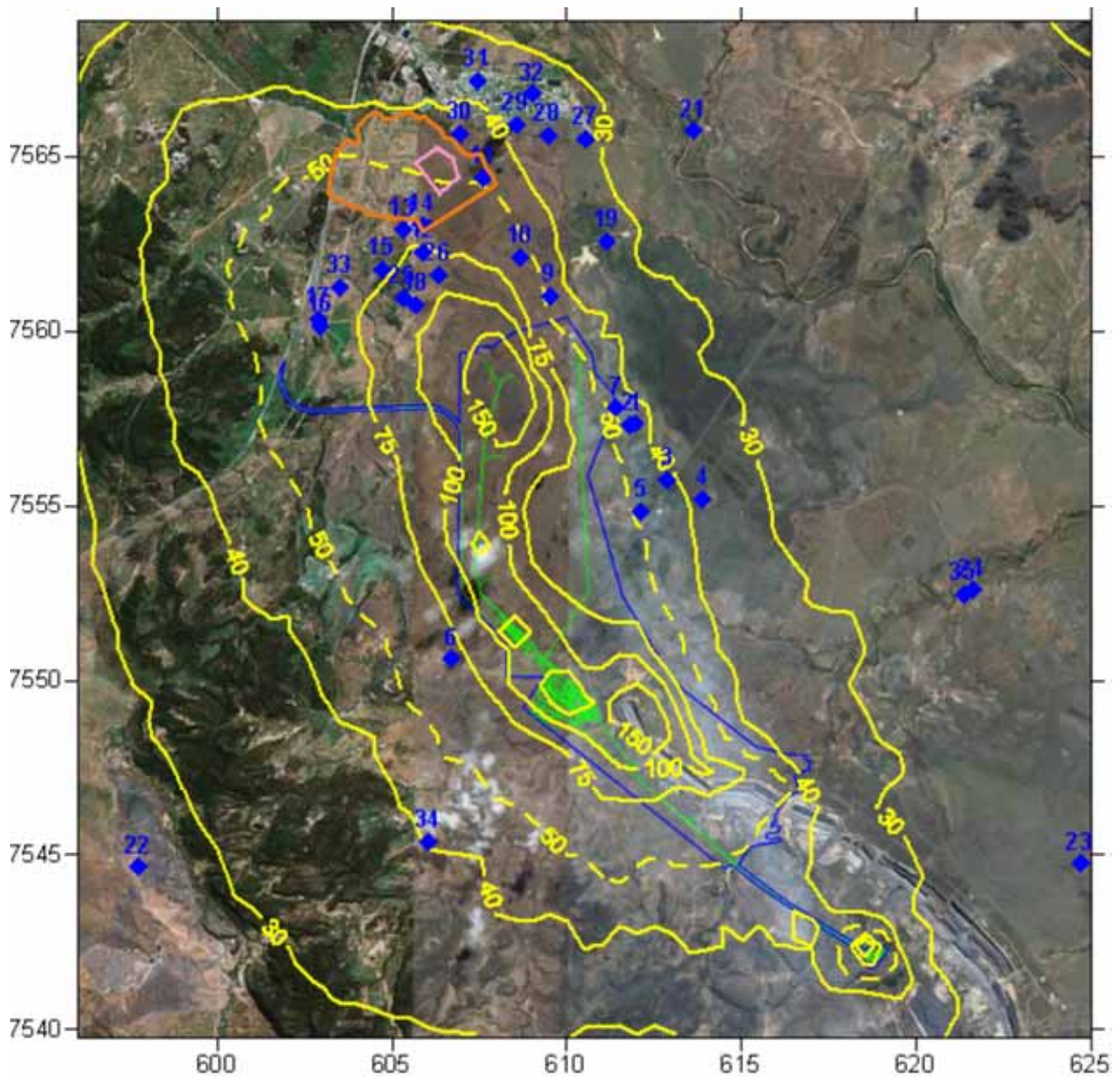


Figure 3-15 Worst-Case North Scenario - Fifth Highest 24-hour Average Ground-Level Concentration of PM₁₀ for Year 1. EPP(Air) objective is 50 µg/m³ (dashed line).

3 Interpretation of Air Quality Impacts

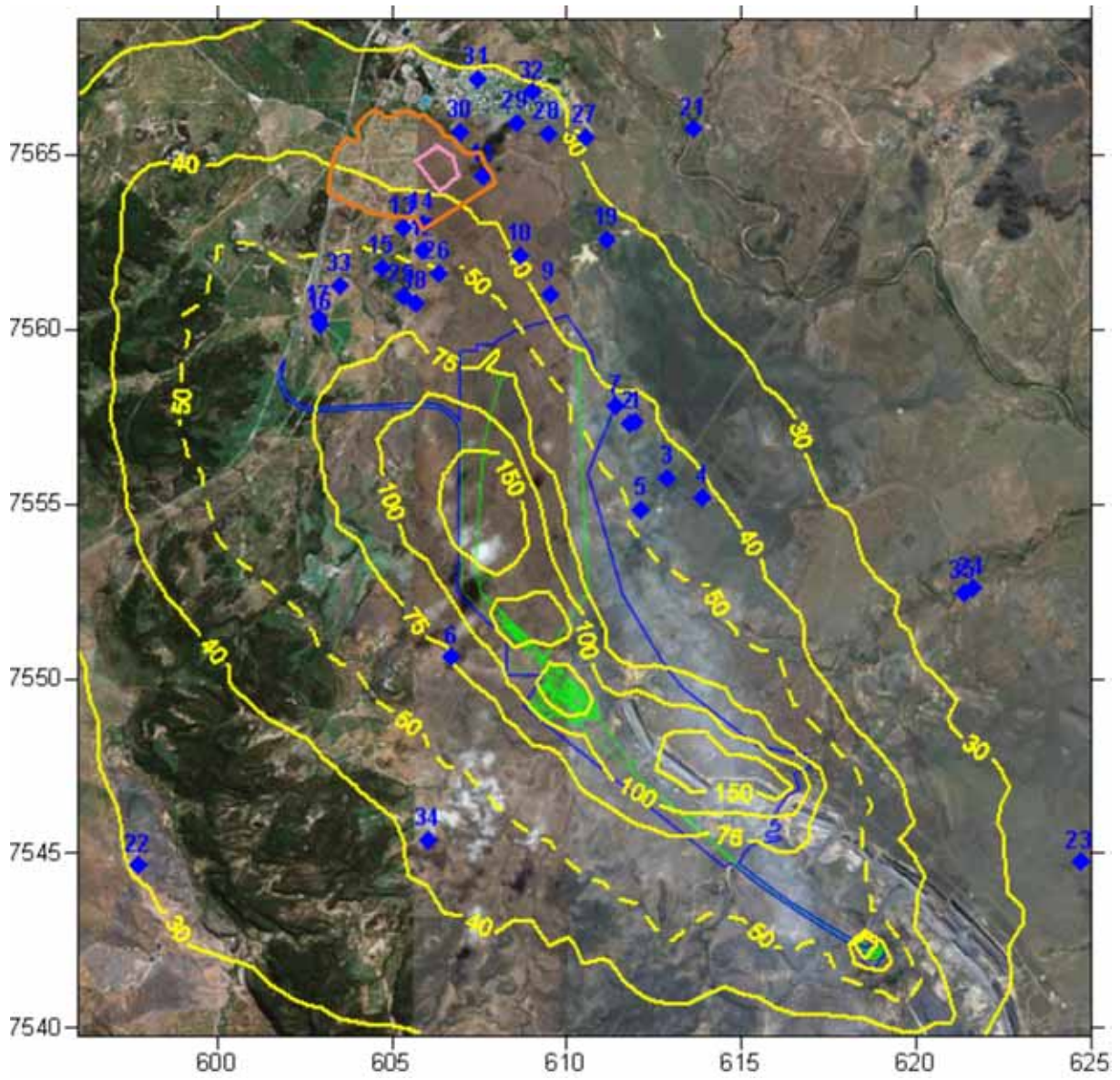


Figure 3-16 Worst-Case North Scenario - Fifth Highest 24-hour Average Ground-Level Concentration of PM₁₀ for Year 2. EPP(Air) objective is 50 µg/m³ (dashed line).

3 Interpretation of Air Quality Impacts

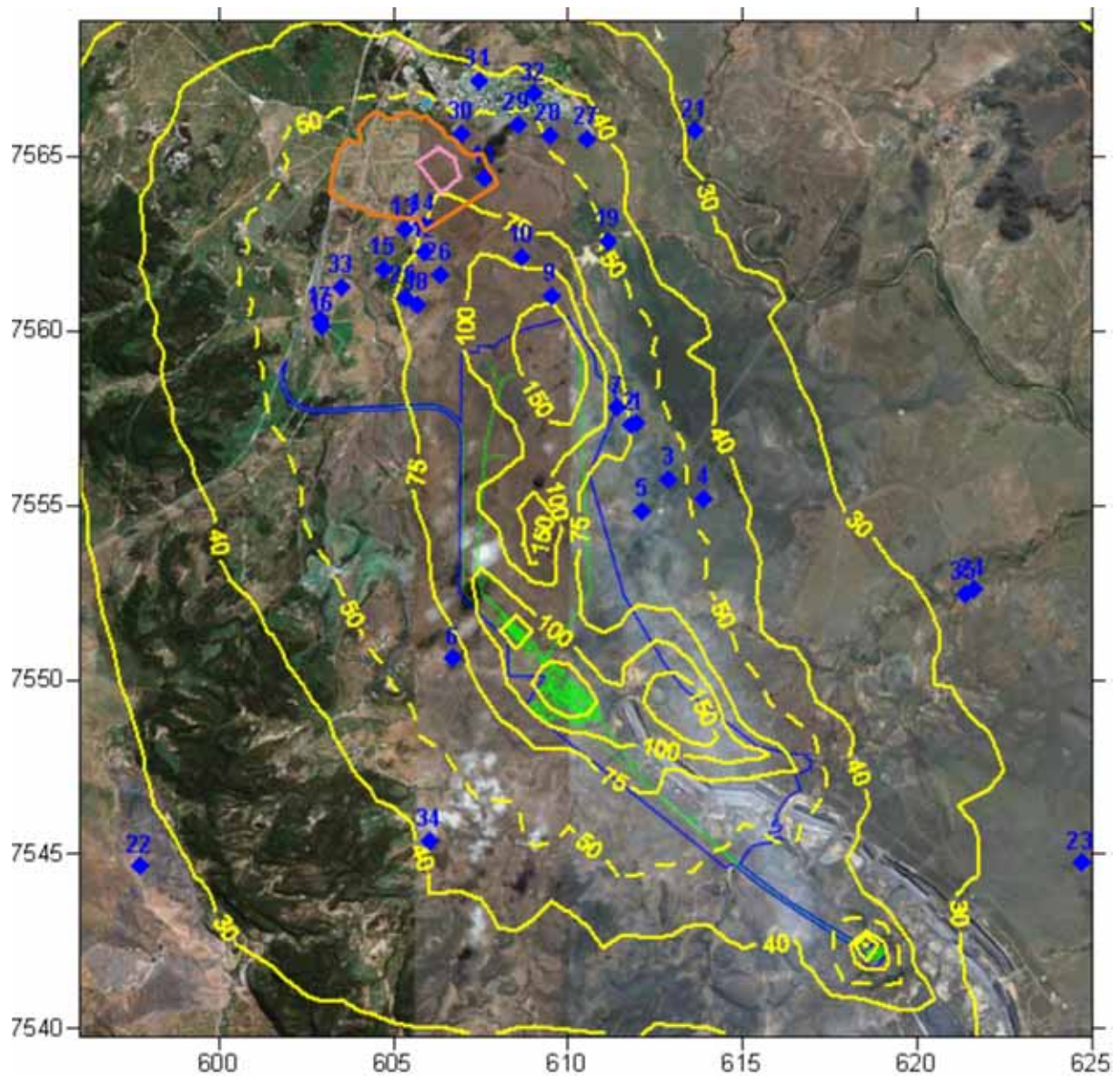


Figure 3-17 Worst-Case North Scenario - Fifth Highest 24-hour Average Ground-Level Concentration of PM_{10} for Year 20. EPP(Air) objective is $50 \mu\text{g}/\text{m}^3$ (dashed line).

3.3.2 Worst Case South Scenario

Presented in Table 3-8 are the results for the predicted fifth highest ground-level concentration of PM_{10} for Year 1, Year 2 and Year 20 based on the worst-case south scenario. A background concentration of $18.8 \mu\text{g}/\text{m}^3$ has been included in the 'Total' column of the table.

Results suggest that the ground-level concentration of PM_{10} associated with the worst-case south scenario has the potential to exceed the EPP(Air) goal of $50 \mu\text{g}/\text{m}^3$ at locations to the northwest of the Horse Pit for all years modelled.

Ground-level concentrations of PM_{10} are not predicted to exceed the EPP(Air) goal of $50 \mu\text{g}/\text{m}^3$ within the Township of Moranbah (receptors 27 through 31).

3 Interpretation of Air Quality Impacts

Presented in Figure 3-18 through Figure 3-20 are contour plots of the fifth-highest 24-hour average ground-level concentrations of PM₁₀ based on the worst-case south operational conditions. A background concentration of 18.8 µg/m³ has been included in the figures.

Table 3-8 Worst Case South Scenario - Fifth Highest Ground-Level Concentration of PM₁₀ (µg/m³).

| Rec | Year 1 | | | Year 2 | | | Year 20 | | |
|-----|-----------|------------------------------|--------------------|-----------|------------------------------|--------------------|-----------|------------------------------|--------------------|
| | Total | % of Guide-line ¹ | Caval Contribution | Total | % of Guide-line ¹ | Caval Contribution | Total | % of Guide-line ¹ | Caval Contribution |
| 1 | 49 | 97% | 30 | 47 | 94% | 28 | 55 | 110% | 36 |
| 2 | 49 | 99% | 31 | 48 | 96% | 29 | 55 | 110% | 36 |
| 3 | 44 | 89% | 26 | 44 | 88% | 25 | 51 | 101% | 32 |
| 4 | 40 | 80% | 21 | 40 | 80% | 21 | 46 | 92% | 27 |
| 5 | 45 | 91% | 27 | 44 | 88% | 25 | 55 | 110% | 36 |
| 6 | 76 | 151% | 57 | 76 | 152% | 57 | 77 | 154% | 58 |
| 7 | 49 | 98% | 30 | 44 | 88% | 25 | 52 | 104% | 33 |
| 9 | 41 | 81% | 22 | 39 | 77% | 20 | 49 | 98% | 30 |
| 10 | 46 | 92% | 27 | 41 | 82% | 22 | 47 | 94% | 28 |
| 11 | 36 | 71% | 17 | 33 | 66% | 14 | 36 | 73% | 18 |
| 12 | 62 | 125% | 44 | 53 | 106% | 34 | 57 | 114% | 38 |
| 13 | 57 | 114% | 38 | 48 | 97% | 30 | 54 | 108% | 35 |
| 14 | 54 | 108% | 35 | 47 | 94% | 28 | 52 | 105% | 34 |
| 15 | 68 | 136% | 49 | 59 | 117% | 40 | 63 | 125% | 44 |
| 16 | 70 | 139% | 51 | 64 | 128% | 45 | 63 | 126% | 44 |
| 17 | 66 | 131% | 47 | 61 | 122% | 42 | 61 | 122% | 42 |
| 18 | 75 | 150% | 56 | 64 | 127% | 45 | 73 | 147% | 55 |
| 19 | 31 | 62% | 12 | 30 | 60% | 11 | 34 | 68% | 15 |
| 21 | 26 | 52% | 7 | 26 | 52% | 7 | 28 | 55% | 9 |
| 22 | 30 | 60% | 11 | 31 | 61% | 12 | 30 | 61% | 12 |
| 23 | 25 | 51% | 6 | 25 | 50% | 6 | 27 | 55% | 8 |
| 24 | 25 | 51% | 7 | 25 | 51% | 7 | 27 | 55% | 9 |
| 25 | 75 | 150% | 56 | 63 | 126% | 44 | 72 | 143% | 53 |
| 26 | 62 | 125% | 43 | 52 | 104% | 33 | 57 | 115% | 39 |
| 27 | 34 | 68% | 15 | 32 | 65% | 14 | 37 | 74% | 18 |
| 28 | 34 | 69% | 16 | 33 | 66% | 14 | 36 | 72% | 17 |
| 29 | 33 | 67% | 15 | 32 | 64% | 13 | 36 | 71% | 17 |
| 30 | 33 | 66% | 14 | 31 | 62% | 12 | 34 | 69% | 16 |
| 31 | 34 | 68% | 15 | 31 | 63% | 13 | 32 | 65% | 14 |
| 32 | 33 | 65% | 14 | 31 | 62% | 12 | 35 | 70% | 16 |
| 33 | 58 | 116% | 39 | 54 | 108% | 35 | 55 | 110% | 36 |
| 34 | 45 | 90% | 26 | 42 | 85% | 24 | 43 | 86% | 24 |
| 35 | 26 | 51% | 7 | 26 | 51% | 7 | 28 | 56% | 9 |

Note (1) Numbers in bold indicate predicted levels exceed the relevant EPP(Air) objective.

¹ EPP(Air) Objective is 50 µg/m³

3 Interpretation of Air Quality Impacts

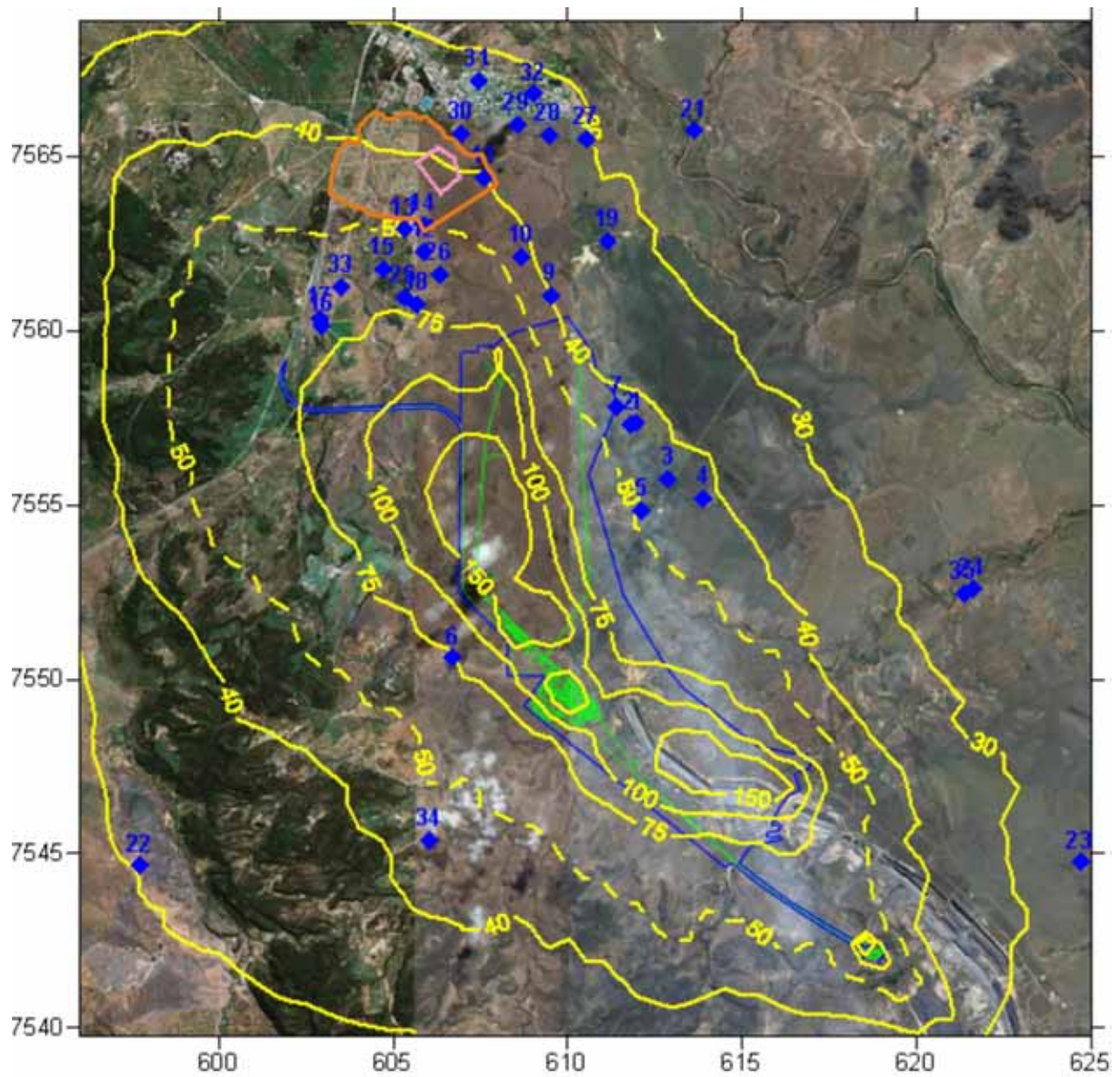


Figure 3-18 Worst-Case South Scenario - Fifth Highest 24-hour Average Ground-Level Concentration of PM₁₀ for Year 1. EPP(Air) objective is 50 µg/m³ (dashed line).

3 Interpretation of Air Quality Impacts

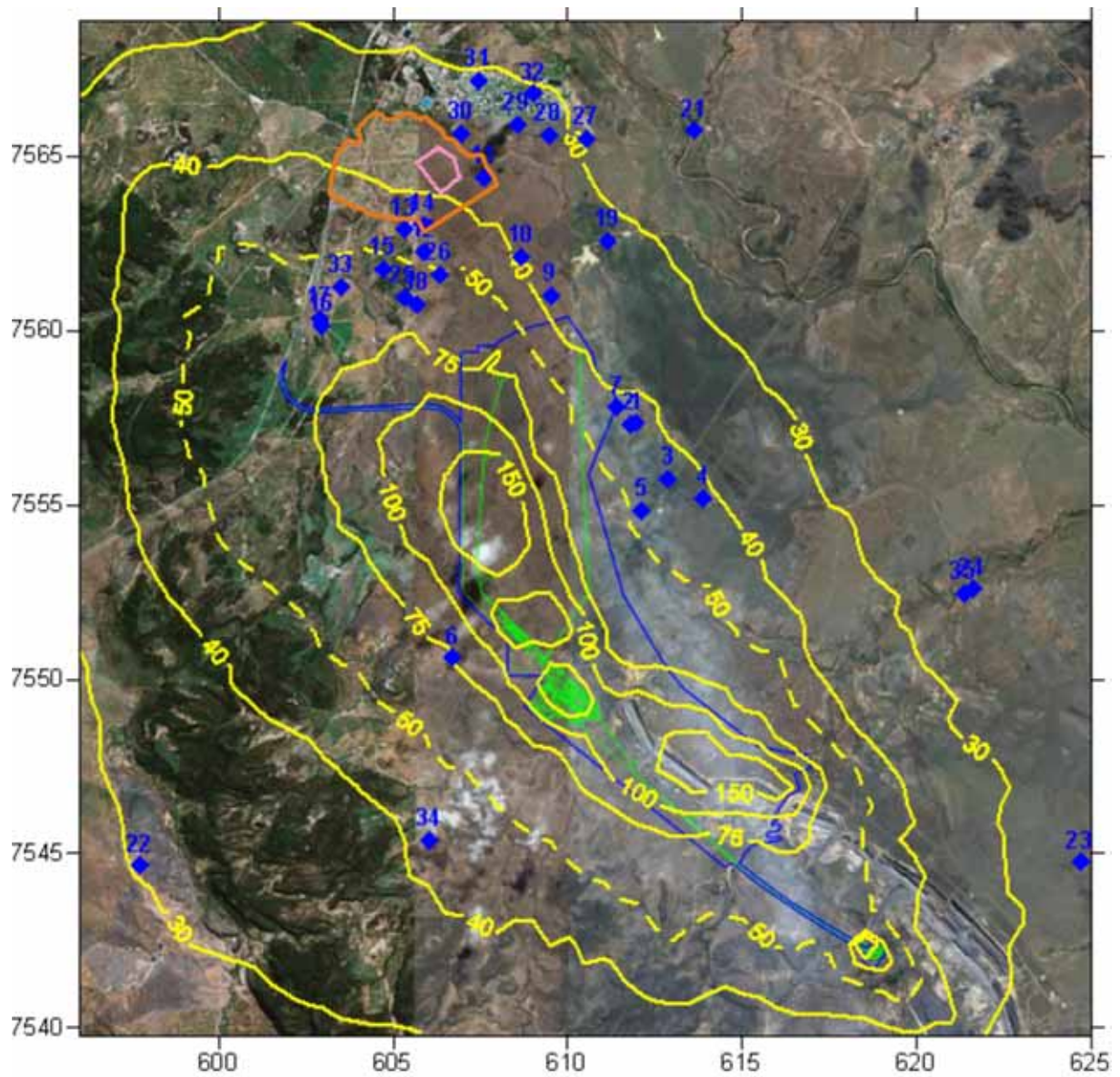


Figure 3-19 Worst-Case South Scenario - Fifth Highest 24-hour Average Ground-Level Concentration of PM₁₀ for Year 2. EPP(Air) objective is 50 µg/m³ (dashed line).

3 Interpretation of Air Quality Impacts

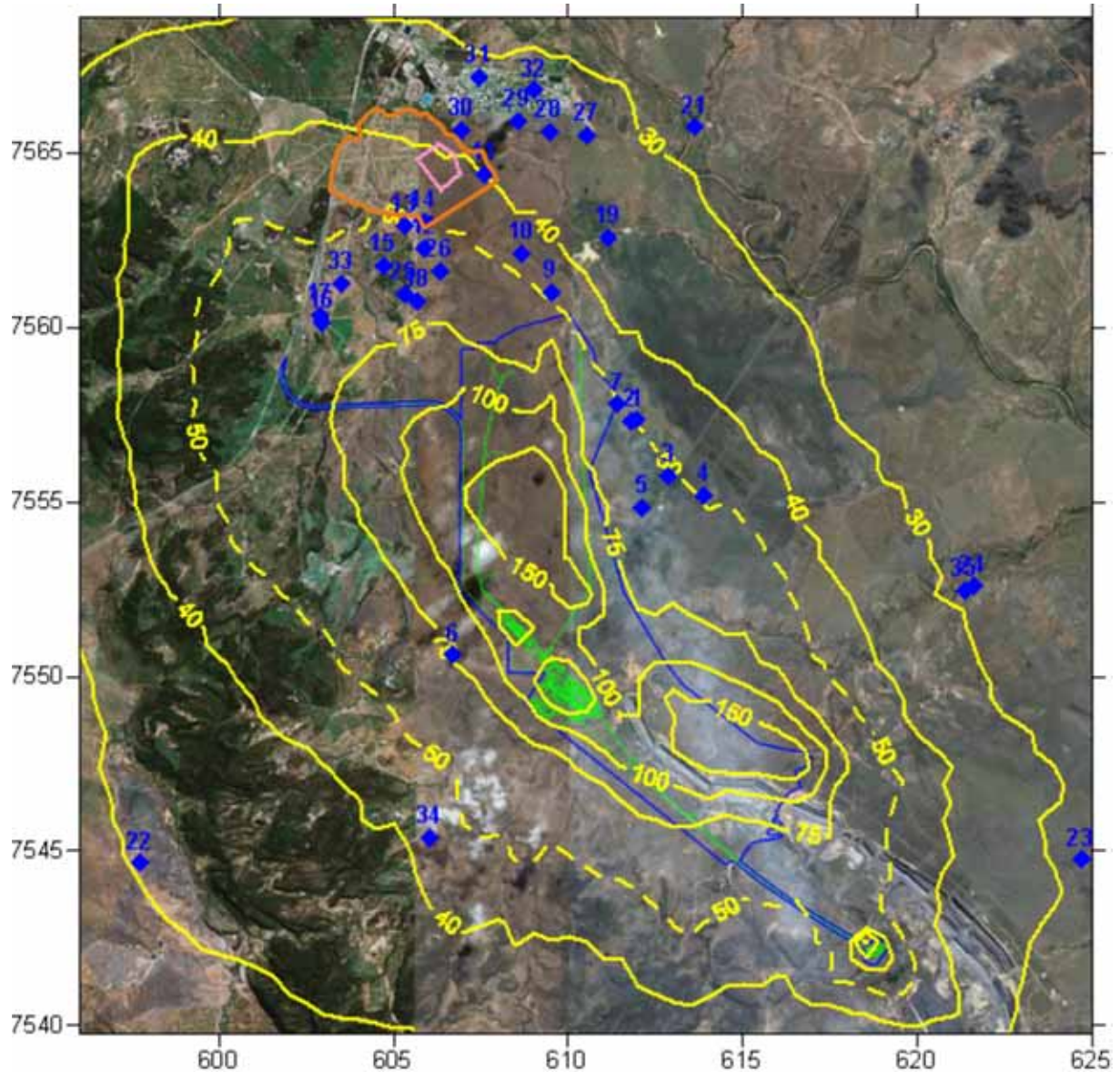


Figure 3-20 Worst-Case South Scenario - Fifth Highest 24-hour Average Ground-Level Concentration of PM₁₀ for Year 20. EPP(Air) objective is 50 µg/m³ (dashed line).

3.3.3 Likelihood of Occurrence of Worst Case Impacts

The worst-case north and south scenarios have been developed assuming that during a 24-hour period:

- One dragline is working at an optimal operational capacity of 44,000 bcm;
- One shovel and truck fleet is working at an optimal operational capacity of 147,200 tonnes; and
- One excavator is working on overburden at an optimal operational capacity of 48,300 tonnes.

3 Interpretation of Air Quality Impacts

Based on information provided by BMA, the likelihood that one of the aforementioned equipment (ie dragline, shovel and truck fleet, or excavator) is operating at optimal capacity for a 24 hour period is 5% (i.e. 1 day in 20). The likelihood that two of the three are operating at optimal operational capacity for a 24 hour period is 0.25% (i.e. 1 day in 400 days) and the likelihood that all three are operating at optimal capacity for a 24 hour period is 0.0125% (i.e. 1 day in 8,000 days or 22 years).

Presented in Figure 3-21 is a timeseries of the 24-hour average ground-level concentration of PM₁₀ at receptor location 28 (on the southern edge of the Township of Moranbah). Results of the dispersion modelling suggest that due to meteorological conditions there is the potential for emissions of dust during optimal operating conditions to contribute to an exceedence of the EPP(Air) objective of 50 µg/m³ at this location 6 days per year.

Thus the likelihood that worst-case meteorological conditions and optimal operation of two pieces of equipment is 1 day in 2,400 days (or 1 day in 6.5 years) and with three pieces of equipment (presented in Section 3.3.1 and Section 3.3.2) is 1 day in 48,000 days (or 1 day in 131.5 years).

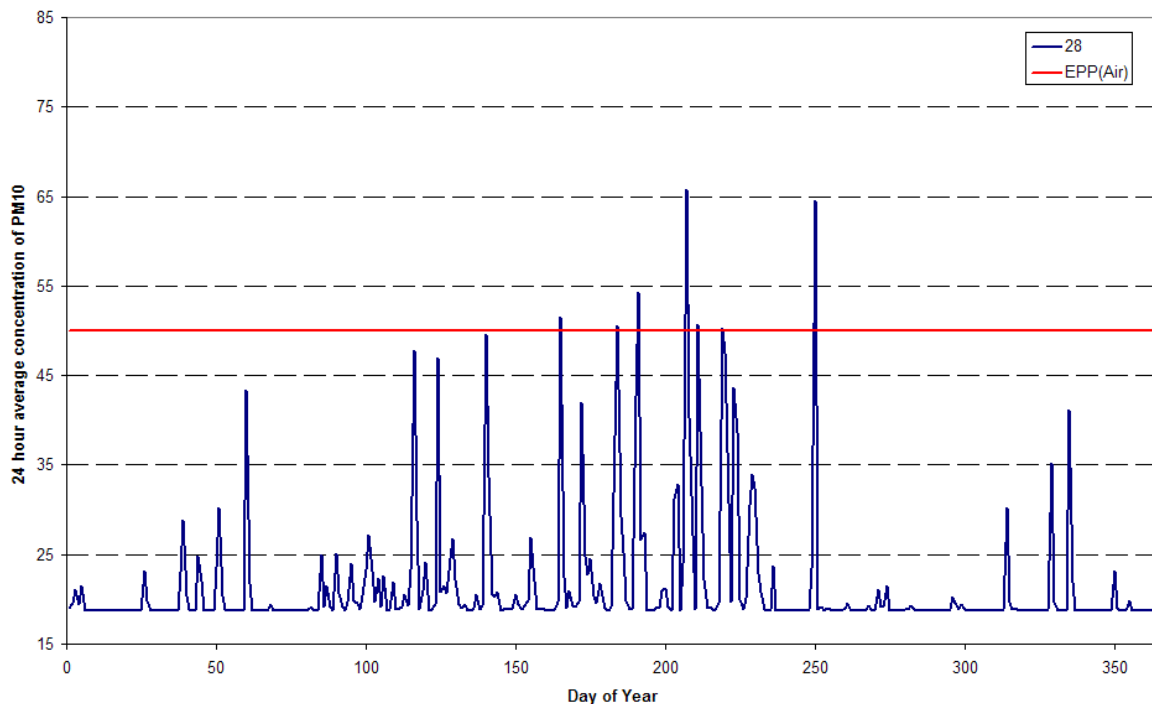


Figure 3-21 Year 20 Worst-Case North Scenario - Timeseries of Predicted 24-hour Average Ground-Level Concentration of PM₁₀ at Receptor Location 28. EPP(Air) objective is 50 µg/m³ (dashed line).

Comments and Summary

4.1 Ambient Air Monitoring Program

The ambient air monitoring program is proposed to be extended to include continuous monitoring of TSP, PM₁₀ and/or PM_{2.5} at locations surrounding the Caval Ridge Mine site. The details of the extension of the monitoring program have yet to be finalised but is proposed to include (in addition to the operational monitoring outlined the Caval Ridge EIS Appendix L):

- Continuous PM₁₀, PM_{2.5} and meteorological monitoring at the Moranbah Airport; and
- Continuous TSP, PM₁₀, PM_{2.5} and meteorological monitoring at a location between the Caval Ridge Mine and the Township of Moranbah as indicated in Figure 4-1.

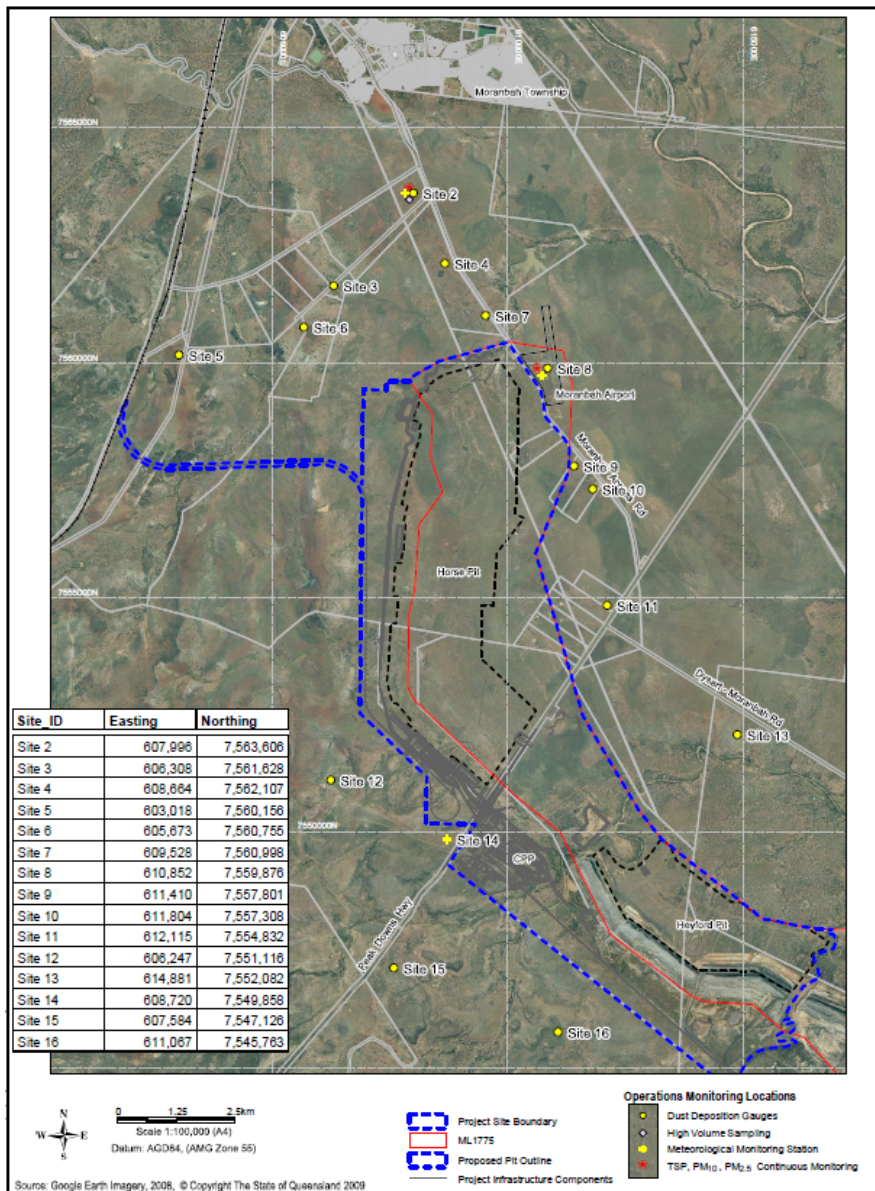


Figure 4-1 Proposed Ambient Air Monitoring Program Including Dust Deposition, Monitoring of Particulate Matter and Meteorological Parameters

4 Comments and Summary

4.2 Cumulative Impacts

Submissions have been raised during the Caval Ridge EIS review, expressing concerns regarding the effects of the cumulative impacts of dust on local and regional air quality as a result of an increased number of dust generating activities in the region.

The role of dispersion modelling is to highlight the potential for adverse air quality impacts within the study region and to guide decisions relating to the design and implementation of ambient air monitoring programs. Assurances that air quality is maintained at levels that are acceptable to the local communities can be verified through a well designed and implemented ambient air monitoring program.

It should be noted that there are inherent limitations associated with modelling low level, non-buoyant dust sources, and combined with the large degree of uncertainty in relation to the location of the dust sources associated with the existing and proposed mines in any given 24-hour period, it is unlikely that modelling will provide the necessary certainties.

Based on the geographic location of the Township of Moranbah and proposed and existing mining operations, local quarrying activities, and other regional sources of dust, possible impacts on the 24-hour average concentration of PM₁₀ within Moranbah Township include (but may not be limited to) the following:

- Impacts from activities located within a similar band of wind directions will be additive. Thus when the wind is from the east, any and all dust sources to the east of the Moranbah will be additive. Similarly, when the wind is from the south, any and all dust sources to the south of Moranbah will be additive.
- Worst-case impacts of dust from the Isaac Plains Mine will not coincide with those from the proposed Caval Ridge mine.
- Worst-case impacts of dust from the Isaac Plains Mine will not coincide with those from the other dust generating activities that are not to the west of the Township
- Moranbah may experience a higher frequency of elevated levels of PM₁₀

Thus, worst-case 24-hour average concentrations of PM₁₀ due to dust-generating activities from all emission sources in the region are not additive during any given 24-hour period as worst-case meteorological conditions for each mine (such as wind speed and wind direction) differ depending on the geographic location of the mine from the Township.

With respect to the annual averages of PM_{2.5}, TSP, and monthly dust deposition, impacts will be cumulative.

4.3 Summary

A review and refinement of the dispersion modelling methodology utilised in the air quality assessment of the Caval Ridge Project has been undertaken.

Changes to operations at the mine site to reduce dust have been incorporated into the revised modelling, including:

- Fleet optimisation - reduced fleet and dozers
- Introduction of back hauling to minimise the number of trucks running empty
- Additional coal ramps in Horse pit
- Redistributed tailings and rejects placement across Horse and Heyford Pits

4 Comments and Summary

Changes to the modelling methodology that have been incorporated in order to reduce the level of conservatism within the model include:

- Dragline drop height calculated more accurately using mine planning parameters
- More accurate reflection of dozer utilisation
- Constant emission rates associated with stockpiling and exposed area were replaced with wind speed dependent emission rates

Results of the revised dispersion modelling suggest that the Caval Ridge project will contribute a maximum of $21 \mu\text{g}/\text{m}^3$ to the 24-hour average ground-level concentration of PM_{10} at receptor locations within the Township of Moranbah under normal operating conditions which is less than the guideline level of $50 \mu\text{g}/\text{m}^3$.

During worst-case 24-hour operating conditions, dust emissions from the Caval Ridge project are predicted to contribute a maximum of $33 \mu\text{g}/\text{m}^3$ to the 24-hour average ground-level concentration of PM_{10} at receptor locations within the Township of Moranbah. The likelihood of optimal operational conditions (as modelled) occurring in combination with meteorological conditions that are associated with worst case dust impacts is estimated at 0.002% (equivalent to 1 day in 131.5 years).

The annual average ground-level concentration of $\text{PM}_{2.5}$ is not predicted to exceed the EPP(Air) objective of $8 \mu\text{g}/\text{m}^3$ at any of the receptor locations under typical operations.

Ground-level concentrations of TSP and dust deposition are not predicted to exceed the relevant project goals at any of the receptor locations included in the dispersion modelling.

References

Environmental Protection (Air) Policy 1998

[Environmental Protection \(Air\) Policy 2008](#)

National Pollutant Inventory (NPI). 2001. *Emission Estimation Technique Manual for Mining, Version 2.3, (5 December 2001) (part of the Mining Handbook)*. Available by download from the NPI website at: http://www.npi.gov.au/handbooks/approved_handbooks/mining.html.

Sinclair Knight Merz (SKM, 2005), *Improvement of NPI Fugitive Particulate Matter Emission Estimation Techniques*, May 2005.

Limitations

URS Australia Pty Ltd (URS) has prepared this report in accordance with the usual care and thoroughness of the consulting profession for the use of BMA and only those third parties who have been authorised in writing by URS to rely on the report. It is based on generally accepted practices and standards at the time it was prepared. No other warranty, expressed or implied, is made as to the professional advice included in this report.

The methodology adopted and sources of information used by URS are outlined in this report. URS has made no independent verification of this information beyond the agreed scope of works and URS assumes no responsibility for any inaccuracies or omissions. No indications were found during our investigations that information contained in this report as provided to URS was false.

This report was prepared between July 2009 and October 2009 and is based on the conditions encountered and information reviewed at the time of preparation. URS disclaims responsibility for any changes that may have occurred after this time.

This report should be read in full. No responsibility is accepted for use of any part of this report in any other context or for any other purpose or by third parties. This report does not purport to give legal advice. Legal advice can only be given by qualified legal practitioners.



URS

URS Australia Pty Ltd
Level 16, 240 Queen Street
Brisbane, QLD 4000
GPO Box 302, QLD 4001
Australia

T: 61 7 3243 2111

F: 61 7 3243 2199

www.ap.urscorp.com