



bhpbilliton

Economic contribution and payments to governments Report 2015



Contents

Our Charter	
1 Chief Financial Officer's Introduction	1
2 2015 total payments to governments	2
3 Approach to transparency and tax	4
4 Operating Model and global value chain	6
5 Our broader contribution	9
6 Enhancing tax system effectiveness	12
7 Our payments to governments	14
8 Tax disclosed in our 2015 Financial Statements and reconciliation of taxes paid	20
9 Basis of report preparation	21
10 Glossary	23
11 Independent Auditor's report	24
Corporate Directory	

Our Charter

**We are BHP Billiton,
a leading global
resources company.**

Our purpose is to create long-term shareholder value through the discovery, acquisition, development and marketing of natural resources.

Our strategy is to own and operate large, long-life, low-cost, expandable, upstream assets diversified by commodity, geography and market.

Our Values

Sustainability

Putting health and safety first, being environmentally responsible and supporting our communities.

Integrity

Doing what is right and doing what we say we will do.

Respect

Embracing openness, trust, teamwork, diversity and relationships that are mutually beneficial.

Performance

Achieving superior business results by stretching our capabilities.

Simplicity

Focusing our efforts on the things that matter most.

Accountability

Defining and accepting responsibility and delivering on our commitments.

We are successful when:

Our people start each day with a sense of purpose and end the day with a sense of accomplishment.

Our communities, customers and suppliers value their relationships with us.

Our asset portfolio is world-class and sustainably developed.

Our operational discipline and financial strength enables our future growth.

Our shareholders receive a superior return on their investment.



Andrew Mackenzie

Chief Executive Officer

BHP Billiton Limited. ABN 49 004 028 077. Registered in Australia. Registered office: 171 Collins Street, Melbourne, Victoria 3000, Australia. BHP Billiton Plc. Registration number 3196209. Registered in England and Wales. Registered office: Neathouse Place, London SW1V 1LH, United Kingdom. Each of BHP Billiton Limited and BHP Billiton Plc is a member of the BHP Billiton Group, which is headquartered in Australia. BHP Billiton is a Dual Listed Company structure comprising BHP Billiton Limited and BHP Billiton Plc. The two entities continue to exist as separate companies but operate as a combined Group known as BHP Billiton.

The headquarters of BHP Billiton Limited and the global headquarters of the combined BHP Billiton Group are located in Melbourne, Australia. BHP Billiton Plc is located in London, United Kingdom. Both companies have identical Boards of Directors and are run by a unified management team. Throughout this publication, the Boards are referred to collectively as the Board. Shareholders in each company have equivalent economic and voting rights in the BHP Billiton Group as a whole.

1 Chief Financial Officer's Introduction



I am pleased to introduce BHP Billiton's Economic contribution and payments to governments Report for 2015. This inaugural Report is another important step in BHP Billiton's ongoing leadership in transparency.

BHP Billiton has a strong commitment to demonstrating the highest standards of corporate governance and transparency. We began our journey of voluntarily disclosing our payments of taxes and royalties in 2000 when we first disclosed these payments in our annual Sustainability Report. Since then, we have progressively increased the detail of these annual disclosures in line with feedback from our key stakeholders.

This Report discloses the payments we have made to governments during the 2015 financial year on a country-by-country and project-by-project basis. This disclosure is voluntary as it is in advance of any regulatory requirement to do so in the jurisdictions in which we operate.

Our payments of taxes and royalties reflect the fact that governments bestow upon us the responsibility of converting their natural resource endowments into revenue streams. Through this, governments can provide their citizens with the services and infrastructure necessary to improve their citizens' quality of life. In 2015, we paid US\$7.3 billion globally in taxes, royalties and other payments to governments. For 2015, our global adjusted effective tax rate was 31.8 per cent. This is higher than the average corporate income tax rate of 25 per cent for Organisation for Economic Co-operation and Development (OECD) countries. For 2015, our global effective income tax and royalties paid rate is in excess of 45 per cent.

Payments of taxes and royalties are one element of our broader economic and social contribution. In 2015, our total economic contribution was US\$35.7 billion, which included payments to suppliers, wages and employee benefits, dividends, taxes and royalties. This includes the voluntary contribution we make to our host communities. In 2015, we invested US\$225 million in communities. It also includes the returns we generate for our shareholders and investors. In 2015, we contributed US\$6.6 billion to our shareholders by way of dividend.

At a time of subdued global growth and declining commodity prices, tax and broader economic policy is rightly a major subject of discussion in many jurisdictions. This Report aims to contribute to these discussions by explaining our Operating Model and our views on the principles that should underpin effective taxation system design and mandatory disclosure regimes.

BHP Billiton was a founding supporter of the Extractive Industries Transparency Initiative (EITI) in 2002 and an early adopter of best practice in disclosure and transparency. BHP Billiton is committed to being a leader in further enhancing disclosure and transparency. For example, we support the establishment of a globally consistent disclosure framework that includes formal equivalency agreements between jurisdictions.

We look forward to discussing this Report with our stakeholders around the world and continuing our leadership role in this critically important area.

A handwritten signature in black ink, appearing to read 'Peter Beaven'. The signature is stylized and fluid.

Peter Beaven
Chief Financial Officer

US\$7.3 billion
Total payments to governments

US\$35.7 billion
Total economic contribution

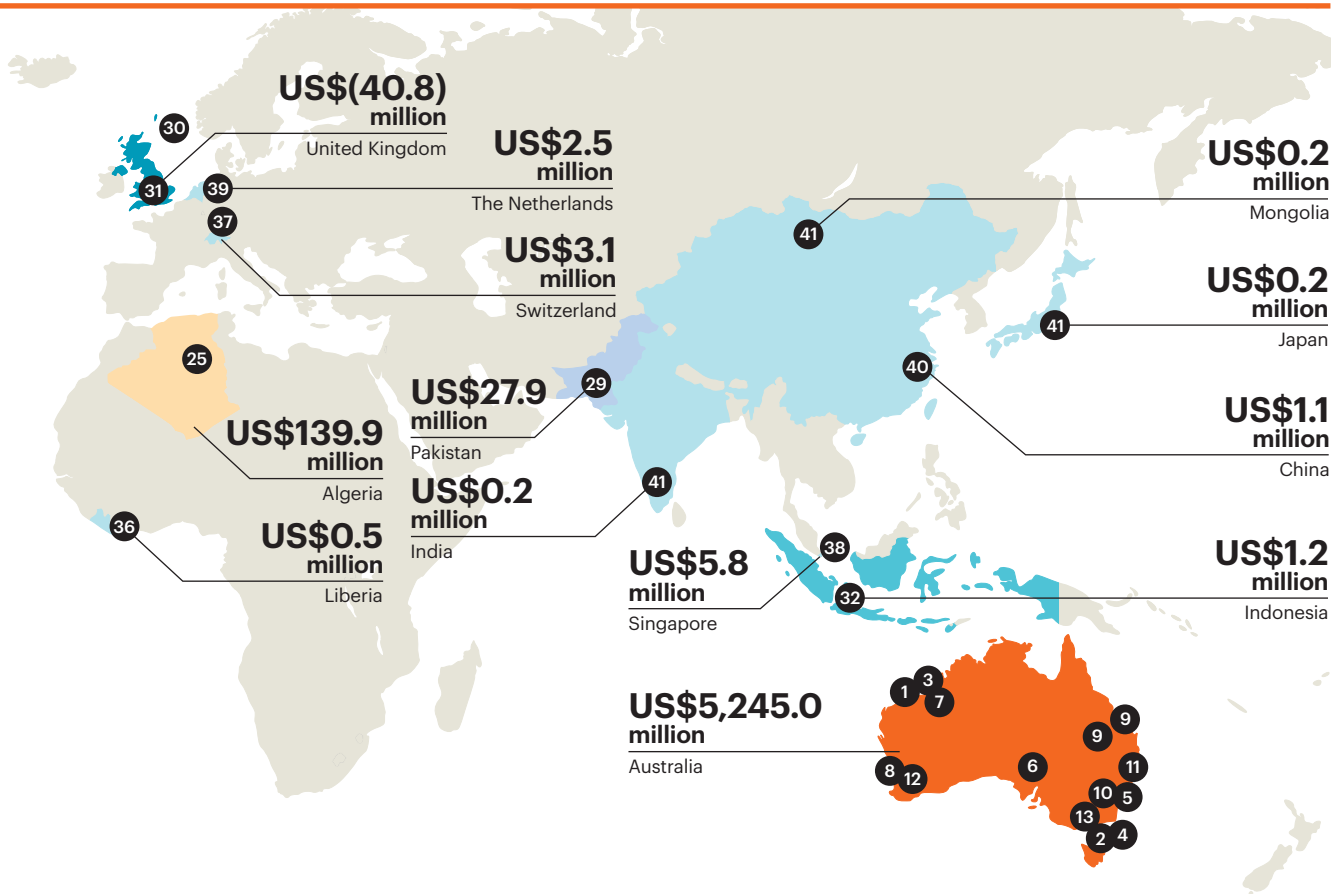
2 2015 total payments to governments

BHP Billiton pays taxes, royalties and other payments in accordance with the tax regulations and laws applying in the jurisdictions in which we operate. This section outlines our payments to governments by country in 2015.

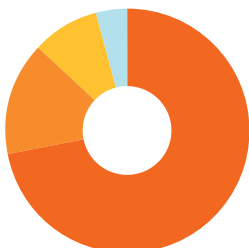
Ref	Business	Projects	Description	Payments to governments (US\$M) ⁽¹⁾
Australia				
1	Petroleum and Potash	North West Shelf	Joint interest offshore oil and gas fields in Western Australia	5,245.0
2	Petroleum and Potash	Bass Strait	Joint interest offshore oil and gas fields in Victoria	
3	Petroleum and Potash	Australia Production Unit – Western Australia	Operated offshore oil and onshore gas processing facilities in Western Australia	
4	Petroleum and Potash	Australia Production Unit – Victoria	Operated offshore oil and onshore gas processing facilities in Victoria	
5	Petroleum and Potash	Head Office entities	Petroleum and Potash Head Office entities in Australia	
6	Copper	Olympic Dam	Underground mine and processing, smelting and refining facilities producing copper cathode, uranium oxide, gold and silver	
7	Iron Ore	Western Australia Iron Ore	Integrated iron ore mines, rail and port operations in the Pilbara region of Western Australia	
8	Iron Ore	Head Office entities	Iron Ore Head Office entities in Australia	
9	Coal	Queensland Coal	BHP Billiton Mitsubishi Alliance – Open-cut and underground metallurgical coal mines in the Bowen Basin and the Hay Point Coal terminal, Queensland	
10	Coal	New South Wales Energy Coal	BHP Billiton Mitsui Coal – Two open-cut metallurgical coal mines in the Bowen Basin, Central Queensland	
11	Coal	Head Office entities	Open-cut energy coal mine and preparation plant in New South Wales	
12	Coal	Head Office entities	Coal Head Office entities in Australia	
13	Group and Unallocated	Nickel West	Integrated sulphide mining, concentrating, smelting and refining operation in Western Australia	
13	Group and Unallocated	Corporate Head Office	Corporate Head Office entities in Australia	
Chile				
14	Copper	Escondida	Open-cut mine and processing facilities, producing copper concentrate and copper cathode, located in northern Chile	1,125.6
15	Copper	Pampa Norte	Two open-cut mines, producing copper cathode in northern Chile	
16	Copper	Head Office entities	Copper Head Office entities in Chile	
United States				
17	Petroleum and Potash	Onshore US (Fayetteville)	Onshore shale liquids and gas fields in Arkansas	644.2
18	Petroleum and Potash	Onshore US (Haynesville)	Onshore shale liquids and gas fields in Louisiana	
19	Petroleum and Potash	Onshore US (Permian Basin, Eagle Ford)	Onshore shale liquids and gas fields in Texas	
20	Petroleum and Potash	Gulf of Mexico	Offshore oil and gas fields in the Gulf of Mexico	
21	Petroleum and Potash	Head Office entities	Petroleum and Potash Head Office entities in the United States	
22	Copper	Head Office entities	Copper Head Office entities in the United States	
23	Coal	New Mexico Coal	Energy coal mine in New Mexico	
24	Group and Unallocated	Corporate Head Office	Corporate Head Office entities in the United States	
Algeria				
25	Petroleum and Potash	Algeria Joint Interest Unit	Joint interest onshore oil and gas unit	139.9
Canada				
26	Petroleum and Potash	Potash	Jansen Potash Project	79.9
27	Copper	Head Office entities	Copper Head Office entities in Canada	
Trinidad and Tobago				
28	Petroleum and Potash	Trinidad and Tobago Production Unit	Operated offshore oil and gas fields	42.6
Pakistan				
29	Petroleum and Potash	Pakistan Production Unit	Operated onshore oil and gas fields	27.9
United Kingdom				
30	Petroleum and Potash	United Kingdom Production Unit	Operated offshore oil and gas fields	(40.8) ⁽²⁾
31	Group and Unallocated	Corporate Head Office	Corporate Head Office entities in the United Kingdom	
Indonesia				
32	Coal	IndoMet	Seven coal contracts of work covering a large metallurgical coal resource	1.2
Other				
33	Petroleum and Potash; Iron Ore	Head Office entities	Petroleum and Potash and Iron Ore Head Office entities for Businesses located in Brazil	17.8
34	Petroleum and Potash	Head Office entities	Petroleum Head Office entities in Argentina	3.5
35	Copper	Head Office entities	Copper Head Office entities in Peru	9.2
36	Iron Ore	Head Office entities	Iron Ore Head Office entities in Liberia	0.5
37	Group and Unallocated	Marketing and Corporate Head Offices	Marketing and Corporate Head Offices for activities in Switzerland	3.1
38	Group and Unallocated	Marketing and Corporate Head Offices	Marketing and Corporate Head Offices for activities in Singapore	5.8
39	Group and Unallocated	Marketing and Corporate Head Offices	Marketing and Corporate Head Offices for activities in The Netherlands	2.5
40	Group and Unallocated	Marketing and Corporate Head Offices	Marketing and Corporate Head Offices for activities in China	1.1
41	Group and Unallocated	Marketing and Corporate Head Offices	Marketing and Corporate Head Offices for activities in India, Japan and Mongolia	0.6
Total				7,309.6

(1) Payments to governments have been prepared on the basis set out in section 9 'Basis of report preparation'.

(2) The negative US\$40.8 million includes refunds received in FY2015 in respect of Petroleum Revenue Tax (PRT) paid in FY2014 (US\$3.7 million), and corporate income taxes paid in FY2012 (US\$41.8 million). Corporate income tax and PRT paid in respect of FY2014, FY2013 and FY2012 (excluding refunds received in FY2015) was US\$13.9 million, US\$119.2 million, and US\$102.5 million respectively.



Payments to government by country



- Australia 72%
- Chile 15%
- US 9%
- Other 4%

3 Approach to transparency and tax

3.1 Overview

The scale and long-term nature of our operations enables us to make a significant and long-term economic contribution to the countries in which we operate. We support local and national economies through the payment of taxes and royalties to our host governments, as well as through the creation of direct and indirect jobs, and the purchase of goods and services. It follows that we must act responsibly, including in relation to our tax affairs, in order to be able to provide our host communities with the best opportunity to prosper.

Communities should have a clear understanding about the revenue gained by their governments from the extraction of natural resources and how this is allocated in their country's economic and social development. When companies provide transparent information about revenue, the potential for corruption is reduced. Countries that transparently and effectively allocate natural resource wealth for the benefit of their communities have the potential to attract greater, more responsible and longer-term business investment. It is imperative that businesses, governments and civil society work in partnership to support transparency.

Our Transparency Principles guide our approach to transparency and disclosure initiatives.

BHP Billiton Transparency Principles

Corruption directly impedes development, denying millions of people around the world their rights to the education and training necessary to earn a livelihood, to basic health services and to the essential infrastructure to improve their lives.

Good governance of natural resource wealth for the benefit of a country's citizens is the domain of sovereign governments, to be exercised in the interests of their national development and on behalf of their citizens. We believe that transparency around revenue flows from the extraction of natural resources is an important element in the fight against corruption. To this end, BHP Billiton has been a supporter of the Extractive Industries Transparency Initiative (EITI) since its inception in 2002.

A level playing field will ensure all companies disclose on the same basis and reduce the reporting burden for those operating in multiple jurisdictions. To this end, appropriate national and extra-territorial mandatory corporate reporting should complement EITI and provide a globally consistent regulatory framework for all extractive industry companies.

Principles

Responsibility

Governments, civil society and the corporate sector must work in partnership to support transparency and help fight corruption. We are committed to acting transparently and publicly reporting the payments we make to governments.

Openness

Transparency is in the best interest of our shareholders, employees, contractors, partners, customers and the communities and societies in which we operate, and is essential to good governance and responsible investment.

Fairness

Nations that share resource wealth and are accountable to their communities have the potential to attract greater, more responsible and longer-term investment. Ensuring our host communities share in our success is critical to the long-term future of our business.

Accessibility

Revenue transparency information must be meaningful, practical and presented in a form that is easily captured, reported and understood. Governments, corporations and civil society organisations all have important roles to play in ensuring communities have the capacity to analyse and effectively interpret the information provided.

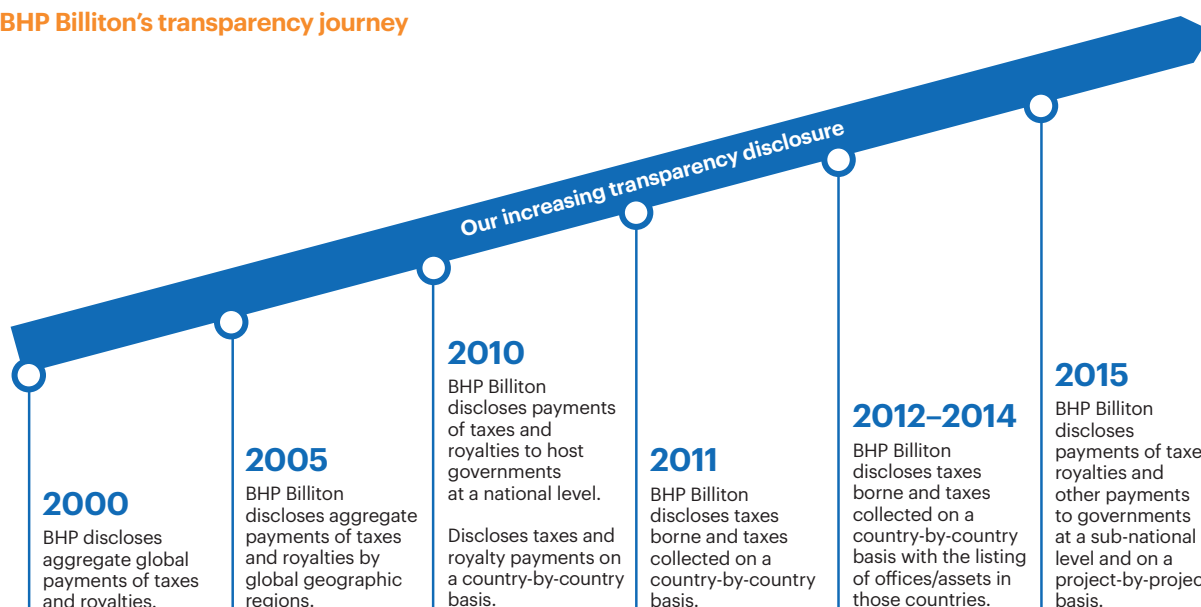
3.2 Our transparency journey

In 2000, we first disclosed our aggregate payments of taxes and royalties. Since then, our level of disclosure in relation to payments to governments has continued to increase. BHP Billiton has been a member of the Extractive Industries Transparency Initiative (EITI) since its inception in 2002. The EITI provides a global standard to promote open and accountable management of natural resources and ensures disclosure of taxes, royalties and other indirect tax payments made by oil, gas and mining companies to governments, in an annual report submitted to EITI. BHP Billiton is a direct participant in the EITI multi-stakeholder groups developing models for potential EITI implementation in Australia and the United States.

In 2014, BHP Billiton was ranked the most transparent mining company and fourth overall in the world in the 2014 Transparency in Corporate Reporting (TRAC) report compiled by international non-government organisation Transparency International. The TRAC report evaluates the transparency of corporate reporting by the world's 124 largest publicly listed companies and assesses the disclosure practices of companies with respect to their anti-corruption programs, company holdings and key financial information.

We take an active role in contributing to transparency initiatives and work with governments and other stakeholders to develop further reform. For further information, refer to section 6 'Enhancing tax system effectiveness'.

BHP Billiton's transparency journey



3.3 BHP Billiton's approach to tax

Our approach to tax is underpinned by *Our BHP Billiton Charter* values, including accountability and integrity.

As a global company with operations in many countries, we are subject to multiple and, at times, complex tax regimes. Regardless of where we operate, we meet our tax and royalty obligations in accordance with the laws of each jurisdiction. We do not engage in aggressive tax planning strategies. Rather, when we seek to invest, we consider a range of different factors and scenarios to ensure we comply with all necessary obligations and provide strong returns to our shareholders. At all times we seek to have transparent and cooperative relationships with tax authorities in the countries in which we operate.

In 2015, there has been increased government and media interest about the use of 'tax havens' by global companies. Given the scale, locality and complexity of operating globally in extractive industries, there can be operational and commercial reasons (such as proximity to customers, regulatory regimes and structures acquired in historical acquisitions) for subsidiaries being tax resident in countries with low tax rates.

Our global company structure (refer section 4.1 'BHP Billiton Operating Model') means that all foreign subsidiaries within the Group are controlled foreign companies of either BHP Billiton Limited or BHP Billiton Plc. This means that, in addition to the local country tax rules, they also come within the scope of the international and anti-avoidance tax rules applying in Australia or the United Kingdom to prevent multinational companies from obtaining inappropriate tax advantages by operating through low rate jurisdictions.

4 Operating Model and global value chain

4.1 BHP Billiton Operating Model

Our strategy is to own and operate, large, long-life, low-cost, expandable, upstream assets diversified by commodity, geography and market. We are among the world's top producers of major commodities including iron ore, metallurgical coal, copper and uranium, and have substantial interests in conventional and unconventional oil and gas, energy coal and nickel. We employ a workforce of approximately 80,000 employees and contractors.

BHP Billiton operates under a Dual Listed Company structure, with two parent companies BHP Billiton Limited and BHP Billiton Plc operating as a single economic entity, run by a unified Board and management team. BHP Billiton Limited has a primary listing on the Australian Securities Exchange in Australia. BHP Billiton Plc has a premium listing on the UK Listing Authority's Official List and its ordinary shares are admitted to trading on the London Stock Exchange in the United Kingdom. It also has a secondary listing on the Johannesburg Stock Exchange in South Africa. In addition, BHP Billiton Limited American Depositary Receipts (ADRs) and BHP Billiton Plc ADRs trade on the New York Stock Exchange in the United States.

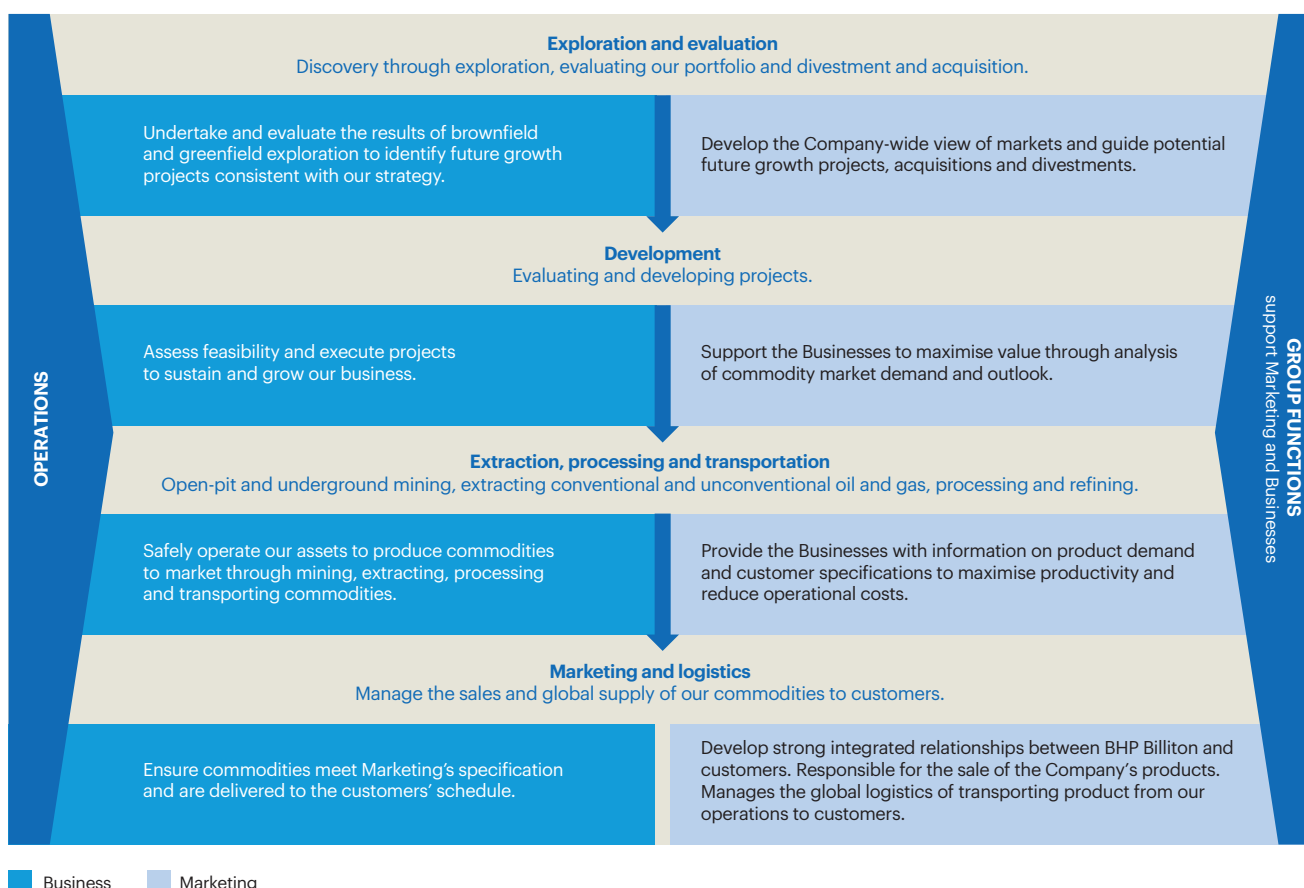
To deliver our strategy our Operating Model is designed to deliver a simple, scalable and productive organisation.

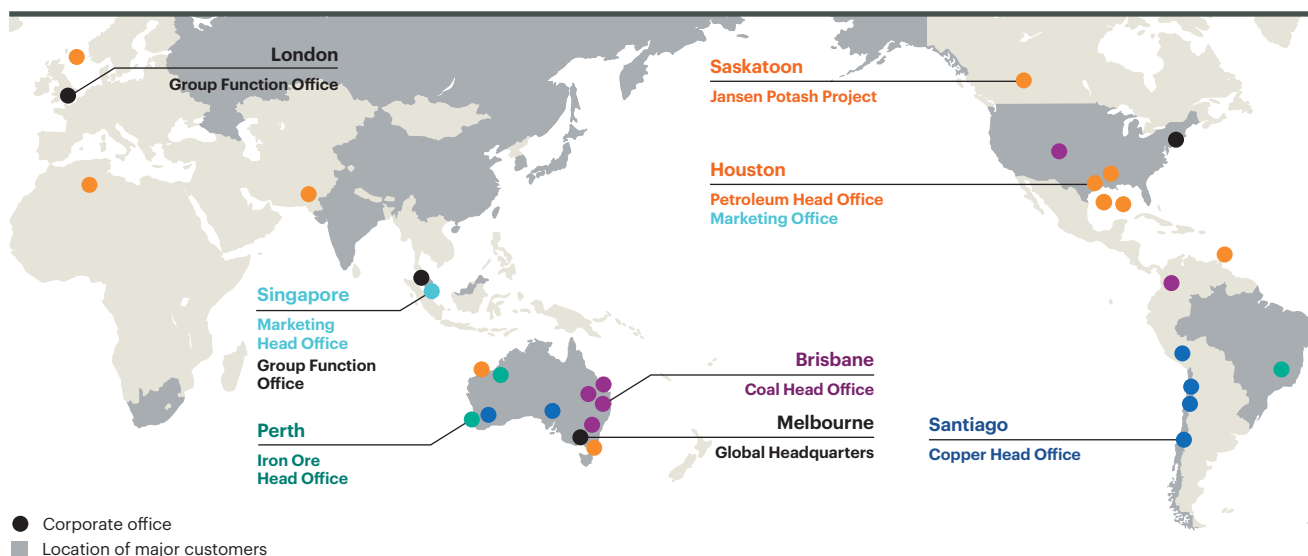
Our Operating Model organises and sets out relationships and accountabilities into four Businesses (Petroleum and Potash, Copper, Iron Ore, and Coal), Group Functions and a centralised Marketing organisation. These dedicated organisational units ensure that we apply specialist knowledge and expertise to each activity within the BHP Billiton global value chain and locate these core units closest to their main activities (refer to map on page 7). Our Businesses are focused on the safe and productive extraction of resources. Our Marketing operations are focused on achieving the best price for our commodities.

BHP Billiton makes significant investments throughout each phase of the value chain. During each phase, we are faced with a range of financial, technical, operating and market risks in exploring, developing and operating our assets.

How we operate

The table below outlines the activities of our Businesses (left hand side) and our Marketing operations (right hand side) at each phase of the value chain, as supported by Group Functions.





Where we operate

- Our Copper Business is headquartered in Santiago given proximity to our major copper assets in Chile.
- Our Iron Ore Business is headquartered in Perth given proximity to our major iron ore assets in the Pilbara, Western Australia.
- Our Coal Business is headquartered in Brisbane given proximity to coal mines in the Bowen Basin, Queensland and New South Wales.
- Our Petroleum Business is headquartered in Houston given proximity to onshore and offshore oil and gas interests in the US.
- Our Marketing operations are headquartered in Singapore and Houston given the close proximity to our major customers.

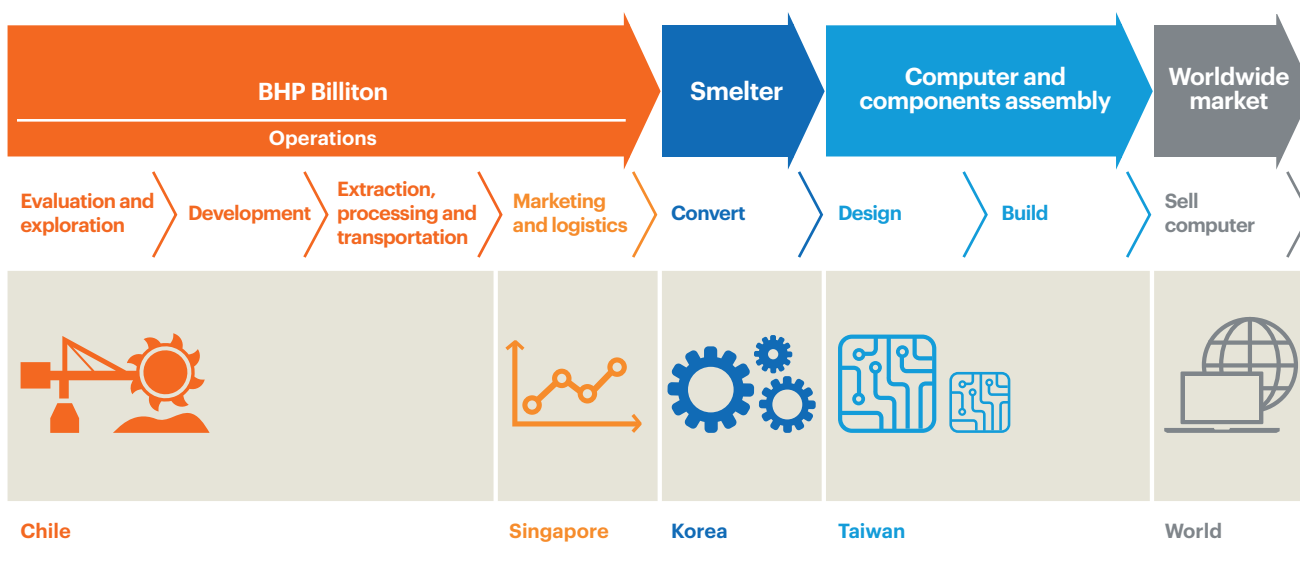
4.2 Our global value chain

Our Operating Model and the resources we develop create a global value chain – exploration and evaluation; development; extraction; processing and transportation; and marketing and logistics. Value is generated by the activities performed at each step, thereby generating economic activity that underpins the contributions we make to our host communities through the creation of jobs, purchasing goods/services and taxes, royalties and other payments to governments.

As a leading global resources company, we are proud that once we extract, sell and transport our commodities, they underpin nearly every facet of modern life – the essential infrastructure, telecommunications, transportation and energy supplies that contribute to raising living standards for people in many parts of the world. As the world has advanced, BHP Billiton has changed and become increasingly global.

4 Operating model and global value chain continued

Below is an illustration of this broader value chain as it relates to the conversion of copper from our operations in Chile, into a computer ultimately purchased by consumers throughout the world. On a worldwide basis, economic value creation will be maximised when each part of the value chain is carried out in the most efficient and cost effective location. These locations will tend to differ for each part of the value chain as individual locations have competitive advantages over the other for these activities. This maximises the efficiency of the use of resources on a global basis. Throughout each phase of the broader value chain, taxes and other relevant payments are generally made to each host government in which that part of the value chain is undertaken. In addition, companies also purchase local goods and services and provide employment opportunities at each stage of the value chain. In this way, activities associated with each part of the value chain deliver economic contribution to local and national economies. Sound commercial and economic policy settings are key criteria for companies in determining where value chain activities take place.



BHP Billiton Marketing Operations

To ensure close proximity to our major customers, the primary location for our marketing activities is Singapore, while marketing of our oil and gas is headquartered in Houston, United States.

Our marketing operations add value by making a significant contribution at each step of the value chain – from the initial step of exploration and evaluation (our marketing operations develop a Company-wide view of markets and guide potential future growth products) to the final step of selling the products (our marketing operations are responsible for obtaining the best price for our products by developing strong integrated relationships with our customers). Further details are contained in the table ‘How we operate’ in section 4.1.

Structure

BHP Billiton Marketing AG (BMAG) is BHP Billiton’s principal marketing entity operating in Singapore. It is owned 58 per cent by BHP Billiton Limited and 42 per cent by BHP Billiton Plc, reflecting the relative value of BHP Limited and Billiton Plc at the time the dual listed structure was created. BHP Billiton entities around the world sell commodities to BMAG at arm’s length prices which are determined consistent with OECD principles and the transfer pricing laws of the countries in which we operate.

Singapore tax incentive

BMAG has been granted a tax incentive by the Government of Singapore for its contribution to the development of Singapore’s commodity sector. In 2015, all of BMAG’s income in Singapore was eligible for the tax incentive.

Australian taxation treatment

All of the profits which BHP Billiton generates in Australia from the production and processing of Australian commodities are subject to Australian tax at the corporate tax rate of 30 per cent.

In 2015, BMAG generated US\$646 million in profits in Singapore.⁽¹⁾ These profits were mostly from the on-sale of Australian-sourced commodities. A substantial proportion of the profits earned by BMAG relating to Australian commodities is subject to Australian tax. In particular, BHP Billiton pays tax in Australia under the Australian Controlled Foreign Companies Rules on 58 per cent of the profits which BMAG earns in Singapore from the on-sale of commodities acquired from Australian entities controlled by BHP Billiton Limited. This ‘top-up tax’ is in addition to the tax we pay in Australia on 100 per cent of the profits from the production of Australian commodities. The other 42 per cent of BMAG’s Singapore profits belong to BHP Billiton Plc reflecting our dual listed structure.

(1) This excludes profits referable to commodities produced by entities which were demerged to form South32.

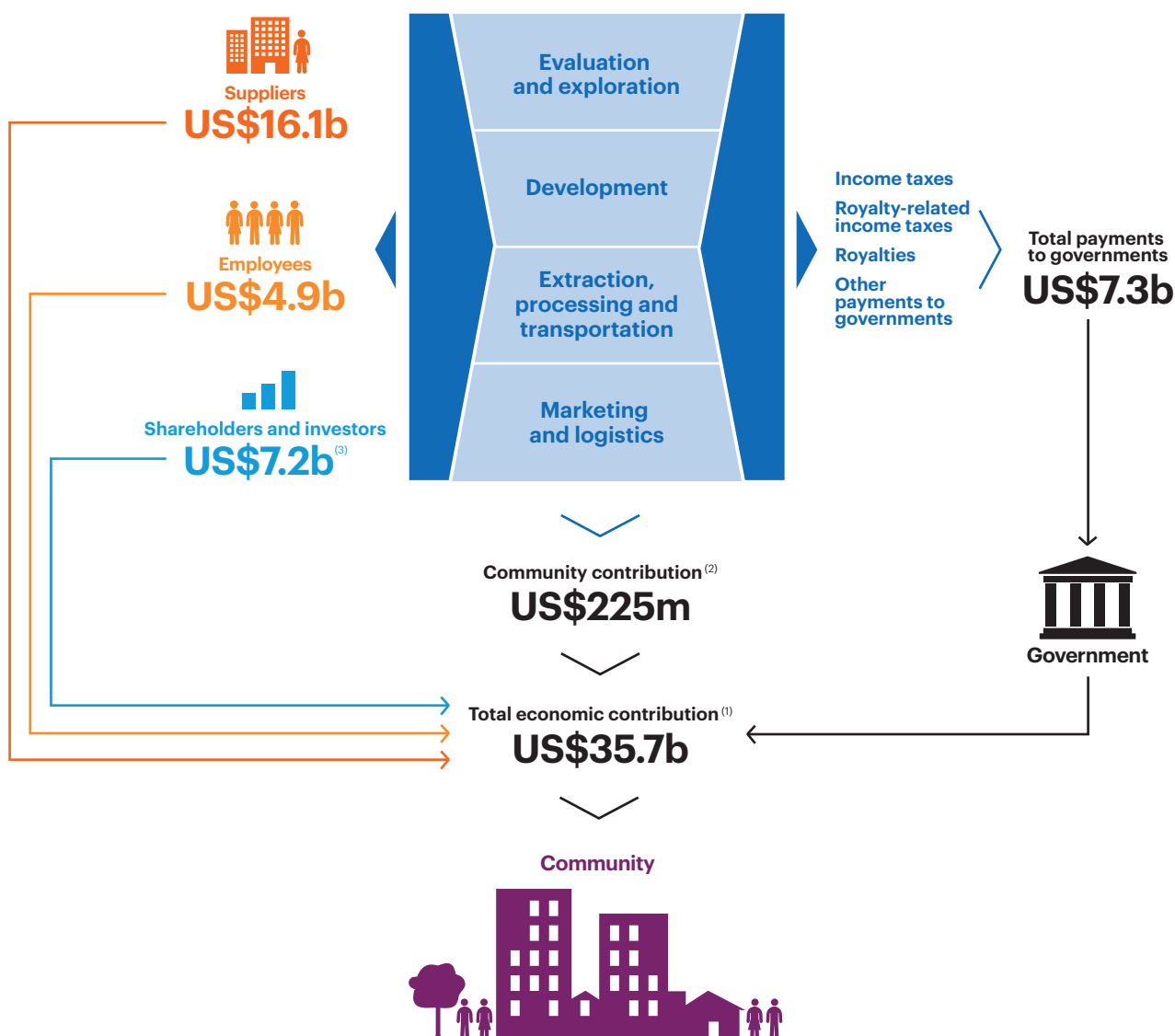
5 Our broader contribution

The contribution we make to the communities in which we operate extends beyond taxes, royalties and other payments to governments. Our commodities support economic development and contribute to improved living standards. Through employment, taxes and royalties, we support local, regional and national economies. Where possible, we purchase local goods and services and develop infrastructure that benefits entire communities.

Through our engagement with communities, we identify social needs and existing resources on which we can build through our own voluntary social investment. This has resulted in a wide range of positive outcomes for the communities in which we operate.

The diagram below illustrates BHP Billiton's global value chain and the total economic contribution our Company makes to communities around the world. In 2015, this amounted to US\$35.7 billion.

BHP Billiton's global value chain⁽¹⁾



(1) The total economic contributions made during the financial year ended 30 June 2015 of US\$35.7 billion is determined by combining total payments to governments of US\$7.3 billion (determined on a cash paid basis), payments to suppliers of US\$16.1 billion, employee expenses of US\$4.9 billion, distributions to shareholders and investors of US\$7.2 billion (determined on an accruals basis) and community contribution of US\$225 million.

(2) Community contribution includes cash, and in-kind support transferred directly to communities and administrative costs (US\$142 million) and funds transferred to BHP Billiton Foundation for which communities are the future beneficiaries (US\$83 million). Includes payments made by equity accounted investments and operations demerged to form South32.

(3) Shareholders and investors includes US\$6.6 billion of dividends attributable to members of the BHP Billiton Group and US\$0.6 billion of interest expense.

5 Our broader contribution continued

As part of our total economic contribution, we voluntarily invest⁽¹⁾ one per cent of our pre-tax profit, calculated on the average of the previous three years' pre-tax profit, in community programs. Since 2001, BHP Billiton has voluntarily committed more than US\$2 billion in programs that aim to have a long-lasting positive impact on the quality of life around the world. The communities in which we work retained more than US\$9.4 billion in economic value. During 2015, our voluntary community investment totalled US\$225 million,⁽²⁾ comprising US\$142 million of cash, in-kind support and administrative costs and an US\$83 million contribution to the BHP Billiton Foundation.

(1) Defined as voluntary company expenditure for social programs and environmental programs with net social benefit.

(2) Includes payments made by equity accounted investments and operations demerged to form South32.

We voluntarily invest in three ways:

Through employees

Double matching of employee donations to charities and civic organisations through the Company's Matched Giving Program.

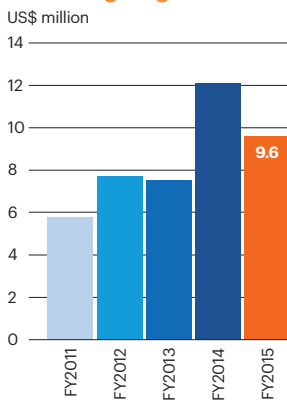
Locally

Community development programs aim to improve the quality of life for people in our host communities to build thriving and resilient communities and regions.

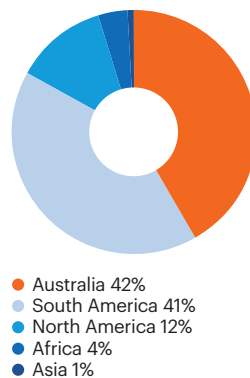
Globally

Partnerships with not-for-profit and non-government organisations for strong social benefits and contribute to the long-term economic social and environmental sustainability of countries, or to make an appreciable difference to a global sustainability challenge over time.

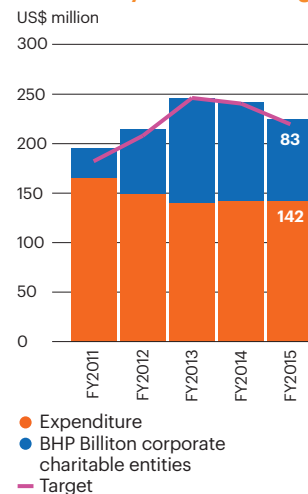
Matched giving



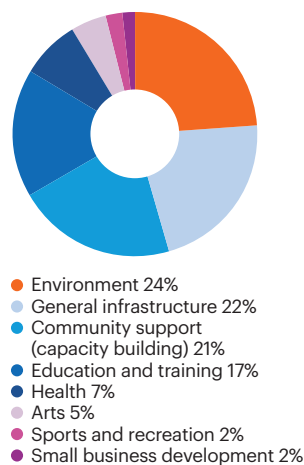
Community investment expenditure by region⁽³⁾⁽⁴⁾



Community investment target⁽³⁾⁽⁴⁾



Community investment expenditure by program category⁽³⁾⁽⁴⁾



(3) The expenditure represents BHP Billiton's equity share for both operated and non-operated joint venture operations.

(4) Excludes expenditure from foundations and trusts.




CASE STUDY
Improving health in communities

Our investments in community health aim to improve the quality of, and access to, general medical care. Where a high prevalence of diseases exists in our areas of activity, we facilitate control programs that are offered to our employees and to our host communities. These initiatives range from a project to help maternal and child health in South Africa and Mozambique, to the refurbishment of a hospital emergency department in regional Australia.

Through BHP Billiton Sustainable Communities, our UK-based charity, we invested more than US\$35 million in community health partnerships. This included a US\$10 million contribution to The Global Fund to Fight AIDS, Tuberculosis and Malaria to support the Mozambique Government's five-year malaria prevention program. It also included a US\$25 million contribution to a five-year partnership with health organisation, PATH, to support the Window of Opportunity project to improve maternal and child health and development in five districts in South Africa and Mozambique.

BHP Billiton Sustainable Communities contributed A\$2.5 million to the refurbishment project of the Muswellbrook Hospital, in New South Wales, Australia, which opened in April 2015. The project, in partnership with Hunter New England Health, includes a new, state-of-the-art emergency department featuring additional beds and clinical treatment areas, improved visitor and staff facilities and new ambulance bays. It also incorporates the latest digital and telehealth technology to link Muswellbrook with specialists and clinicians at other hospitals, to enable them to provide real-time specialist healthcare, advice and assistance to staff treating critically ill patients.

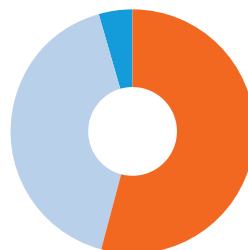
 Further information on our other community contribution initiatives is available online at www.bhpbilliton.com/casestudies.

Supporting local businesses

Due to the size and scale of our operations, we require a range of products and services to enable our Businesses to operate effectively at the local level. Where our requirements can be met, we choose to source these products and services locally from our host communities, benefitting our local suppliers and our local communities. In 2013, we set a target for all our assets to have local procurement plans. This was achieved in 2015. Our assets have also made progress to meet the specific targets included within their local procurement plans.

In 2015, 42 per cent of our Company's spend was with local suppliers, with the largest local spends made by operations in the United States and Australia, 46 per cent and 31 per cent, respectively. An additional 54 per cent of our spend was within the regions in which we operate.

Distribution of supply expenditure



Local spend refers to spend within the communities in which we operate. Regional and national spend refers to spend within the regions, such as states and provinces, and the home country of operation, excluding local spend.

- Regional and national 54%
- Local 42%
- External to home country 4%

6 Enhancing tax system effectiveness

6.1 BHP Billiton's perspective on mandatory disclosure

BHP Billiton supports the establishment of a globally consistent regulatory disclosure framework, including equivalency provisions between jurisdictions. This would create a consistent basis for companies to disclose payments to governments, minimise compliance costs and facilitate ease of comparison between jurisdictions, regardless of the country of operation or industry.

While there has been development of mandatory disclosure initiatives in a number of jurisdictions in recent years, BHP Billiton is concerned by the considerable policy uncertainty that remains as to whether a globally consistent disclosure framework will ultimately emerge to allow for equivalency provisions across jurisdictions. Four such initiatives relevant to BHP Billiton include:

- In Europe, the European Union Accounting Directive was approved by the European Union (EU) in 2013. The Directive requires EU member states to implement legislation, at the latest for financial years commencing on or after 1 January 2016. Under the UK implementing legislation, companies will be required to disclose reports on payments to governments covering financial years commencing on or after 1 January 2015.

- In the United States, in 2011 the Securities and Exchange Commission (SEC) approved rules requiring US-listed producers of minerals, oil and natural gas to disclose certain payments made to governments on a project-by-project basis. In July 2013, the US District Court for the District of Columbia issued an opinion vacating the rules, which the SEC adopted under the Dodd Frank Act. The SEC is currently redrafting the rules, with new rules expected to be released in 2016.
- In Canada, the Extractive Sector Transparency Measures Act was proclaimed in June 2015 and establishes new reporting standards for Canadian oil, gas and mining companies.
- In Australia, in May 2015, it was announced that the Board of Taxation has been tasked with developing a voluntary Corporate Disclosure Code.

It is in the interests of all stakeholders that a globally consistent disclosure framework emerges from these multiple initiatives. To this end BHP Billiton will continue to engage with governments and regulators in relevant jurisdictions.

As an example of BHP Billiton's commitment to these initiatives, we have prepared this Report taking into account the intent of the EU Accounting Directive and would be supportive of a globally consistent mandatory disclosure regime based on this Directive.

6.2 Global taxation reform

Tax policy settings have a critical impact on economic outcomes. In this context, we believe the following principles should underpin the design of effective, efficient and competitive taxation systems:

Competitiveness

The tax system should support international competitiveness in order to ensure that returns from growth and development opportunities are sufficient to attract the required global investment capital.

Efficiency

Tax regulations should minimise impediments to activities that generate economic growth such as investment, innovation and saving.

Simplicity

Tax regulations should minimise the administrative burden for business, uncertainty of interpretation and, in so doing, promote more effective and voluntary compliance.

Stability

Governments should promote stability by pursuing necessary changes through a coherent program of reform that is underpinned by a rigorous analysis of the problem, effective consultation and a thorough implementation plan.

Sustainability

Tax regulations should be fair and be capable of adapting to economic, technological and other global developments.

Confidence

The public must be confident that the tax system is transparent, has integrity and delivers outcomes that support economic growth and sustainable revenue flows.

BHP Billiton supports multilateral efforts to develop effective global approaches to taxation reform through the Base Erosion and Profit Shifting (BEPS) Action Plan being pursued by the OECD and supported by the G20. We believe this is the best way to combat the risk of double taxation and business uncertainty, which is inherent in unilateral actions. In addition, it is critical that unilateral action does not act as an impediment to cross-border trade and investment, thereby placing further pressure on economic growth.

In assessing the merits of proposed actions to address BEPS, BHP Billiton believes the following should apply:

- Tax should be levied in the jurisdiction where the value creating activity is carried out.
- Efforts to increase tax transparency through enhanced reporting should be easy to comply with and simple to report and understand.
- Efforts to address BEPS should be internationally coordinated to avoid the possibility of both double taxation and non-taxation.
- New corporate tax measures should be prospective in their application.
- Companies should not be penalised for responding to national and international tax regimes put in place by governments with the aim of fostering local economic growth.

We are committed to working constructively with relevant governments and other stakeholders in relation to tax reform.

7 Our payments to governments

7.1 Payments made by country and level of government

Taxes paid by classification and country are presented in this section and have been prepared on the basis set out in section 9 'Basis of report preparation' of this Report.

US\$ millions	Corporate income taxes	Royalty-related income taxes	Taxes levied on production	Total taxes paid
Total payments to governments	2,877.0	1,148.1	282.4	4,307.5
Algeria	-	-	-	-
Government of Algeria	-	-	-	-
Argentina	3.5	-	-	3.5
Government of Argentina	3.5	-	-	3.5
Australia	1,931.2	1,012.9	81.2	3,025.3
Government of Australia	1,931.2	1,012.9	81.2	3,025.3
State of Western Australia	-	-	-	-
Town of Port Hedland (Western Australia)	-	-	-	-
Shire of East Pilbara (Western Australia)	-	-	-	-
Shire of Ashburton (Western Australia)	-	-	-	-
Shire of Wiluna (Western Australia)	-	-	-	-
Shire of Leonara (Western Australia)	-	-	-	-
City of Kalgoorlie-Boulder (Western Australia)	-	-	-	-
Shire of Meekatharra (Western Australia)	-	-	-	-
City of Rockingham (Western Australia)	-	-	-	-
State of Queensland	-	-	-	-
Isaac Regional Council (Queensland)	-	-	-	-
Central Highlands Regional Council (Queensland)	-	-	-	-
Mackay Regional Council (Queensland)	-	-	-	-
State of New South Wales	-	-	-	-
Shire of Muswellbrook (New South Wales)	-	-	-	-
State of South Australia	-	-	-	-
State of Victoria	-	-	-	-
Brazil	13.5	-	-	13.5
Government of Brazil	13.5	-	-	13.5
Canada	2.4	-	-	2.4
Government of Canada	2.4	-	-	2.4
Government of Saskatchewan	-	-	-	-
Rural Municipality of Leroy (Saskatchewan)	-	-	-	-
Rural Municipality of Prairie Rose (Saskatchewan)	-	-	-	-
Government of British Columbia	-	-	-	-
Government of Ontario	-	-	-	-
Government of Quebec	-	-	-	-
Chile⁽¹⁾	874.4	138.9	-	1,013.3
Government of Chile	874.4	138.9	-	1,013.3
Municipalidad De Pozo Almonte	-	-	-	-
Municipalidad De Sierra Gorda	-	-	-	-
Municipalidad De Antofagasta	-	-	-	-
China	1.1	-	-	1.1
China Tax Bureau	1.1	-	-	1.1
India	0.2	-	-	0.2
Government of India	0.2	-	-	0.2

(1) Income and mining taxes are paid in Chile on a calendar year basis. However, for the purpose of this Report, taxes paid are included for BHP Billiton's financial year (1 July 2014 to 30 June 2015). For reference, income tax and specific tax on mining activities paid by Escondida and Pampa Norte for calendar year 2014 amount to US\$924,672,687 and US\$101,280,150 respectively.

(2) Taxes collected represent tax payments made to governments on behalf of our employees. These payments have been presented in the Report for information purposes only. They are not included in the total payments to governments of US\$7.3 billion.

Royalties	Production entitlements	Fees	Payments for infrastructure improvements	Total payments as defined by the EU Accounting Directive	Other payments	Total payments to governments	Taxes collected ⁽²⁾
2,257.9	178.6	111.0	61.9	6,916.9	392.7	7,309.6	1,426.3
-	139.9	-	-	139.9	-	139.9	-
-	139.9	-	-	139.9	-	139.9	<1
-	-	-	-	3.5	-	3.5	-
-	-	-	-	3.5	-	3.5	-
1,933.2	-	28.7	-	4,987.2	257.8	5,245.0	1,052.5
182.4	-	0.9	-	3,208.6	35.4	3,244.0	1,052.5
1,137.6	-	10.6	-	1,148.2	110.3	1,258.5	-
-	-	0.5	-	0.5	3.7	4.2	-
-	-	-	-	-	3.4	3.4	-
-	-	1.3	-	1.3	0.5	1.8	-
-	-	-	-	-	0.8	0.8	-
-	-	-	-	-	0.8	0.8	-
-	-	-	-	-	0.2	0.2	-
-	-	-	-	-	0.1	0.1	-
-	-	-	-	-	0.1	0.1	-
479.7	-	11.2	-	490.9	43.6	534.5	-
-	-	-	-	-	14.9	14.9	-
-	-	-	-	-	6.7	6.7	-
-	-	-	-	-	1.4	1.4	-
84.3	-	3.3	-	87.6	9.5	97.1	-
-	-	-	-	-	5.3	5.3	-
49.2	-	0.9	-	50.1	11.2	61.3	-
-	-	-	-	-	9.9	9.9	-
-	-	-	-	13.5	4.3	17.8	-
-	-	-	-	13.5	4.3	17.8	<1
-	-	6.4	61.9	70.7	9.2	79.9	21.5
-	-	-	-	2.4	7.1	9.5	21.5
-	-	6.2	52.6	58.8	-	58.8	-
-	-	-	8.0	8.0	2.0	10.0	-
-	-	-	1.3	1.3	-	1.3	-
-	-	0.1	-	0.1	-	0.1	-
-	-	-	-	-	0.1	0.1	-
-	-	0.1	-	0.1	-	0.1	-
-	-	14.0	-	1,027.3	98.3	1,125.6	143.0
-	-	14.0	-	1,027.3	96.2	1,123.5	143.0
-	-	-	-	-	0.8	0.8	-
-	-	-	-	-	0.7	0.7	-
-	-	-	-	-	0.6	0.6	-
-	-	-	-	1.1	-	1.1	2.5
-	-	-	-	1.1	-	1.1	2.5
-	-	-	-	0.2	-	0.2	-
-	-	-	-	0.2	-	0.2	-

7 Our payments to governments continued

7.1 Payments made by country and level of government continued

US\$ millions	Corporate income taxes	Royalty-related income taxes	Taxes levied on production	Total taxes paid
Indonesia	-	-	-	-
Pemerintah Indonesia	-	-	-	-
Japan	0.2	-	-	0.2
Government of Japan	0.2	-	-	0.2
Liberia	-	-	-	-
Government of the Republic of Liberia	-	-	-	-
Mongolia	-	-	-	-
Government of Mongolia	-	-	-	-
Netherlands	2.5	-	-	2.5
Government of Netherlands	2.5	-	-	2.5
Pakistan	11.2	-	-	11.2
Government of Pakistan	11.2	-	-	11.2
Peru	7.8	-	-	7.8
Republica Del Peru	7.8	-	-	7.8
Singapore	5.8	-	-	5.8
Government of Singapore	5.8	-	-	5.8
Switzerland	3.1	-	-	3.1
Government of Switzerland	3.1	-	-	3.1
Trinidad and Tobago	-	-	-	-
Government of the Republic of Trinidad and Tobago	-	-	-	-
United Kingdom*	(41.8)	(3.7)	-	(45.5)
Government of United Kingdom	(41.8)	(3.7)	-	(45.5)
City of Westminster	-	-	-	-
United States	61.9	-	201.2	263.1
Government of United States	41.1	-	-	41.1
State of Texas	12.0	-	160.3	172.3
State of Louisiana	8.8	-	22.8	31.6
State of Arkansas	-	-	12.2	12.2
State of New Mexico	-	-	5.9	5.9
State of Arizona	-	-	-	-
Discontinued Operations	188.6	-	-	188.6
South32 ⁽³⁾	188.6	-	-	188.6

(2) Taxes collected represent tax payments made to governments on behalf of our employees. These payments have been presented in the Report for information purposes only. They are not included in the total payments to governments of US\$7.3 billion.

(3) Other payments include US\$55.7 million of stamp and transfer duties paid by BHP Billiton in relation to the demerger of South32.

* The negative balances are refunds received in FY2015 in respect of Petroleum Revenue Tax (PRT) paid in FY2014 (US\$3.7 million), and corporate income taxes paid in FY2012 (US\$41.8 million). Corporate income tax and PRT paid in respect of FY2014, FY2013 and FY2012 (excluding refunds received in FY2015) was US\$13.9 million, US\$119.2 million, and US\$102.5 million respectively.

Royalties	Production entitlements	Fees	Payments for infrastructure improvements	Total payments as defined by the EU Accounting Directive	Other payments	Total payments to governments	Taxes collected ⁽²⁾
0.1	-	1.1	-	1.2	-	1.2	1.5
0.1	-	1.1	-	1.2	-	1.2	1.5
-	-	-	-	0.2	-	0.2	-
-	-	-	-	0.2	-	0.2	<1
-	-	0.1	-	0.1	0.4	0.5	-
-	-	0.1	-	0.1	0.4	0.5	<1
-	-	-	-	-	0.2	0.2	-
-	-	-	-	-	0.2	0.2	-
-	-	-	-	2.5	-	2.5	-
-	-	-	-	2.5	-	2.5	-
8.9	-	0.1	-	20.2	7.7	27.9	2.4
8.9	-	0.1	-	20.2	7.7	27.9	2.4
-	-	1.4	-	9.2	-	9.2	0.6
-	-	1.4	-	9.2	-	9.2	0.6
-	-	-	-	5.8	-	5.8	-
-	-	-	-	5.8	-	5.8	<1
-	-	-	-	3.1	-	3.1	-
-	-	-	-	3.1	-	3.1	<1
-	38.7	3.9	-	42.6	-	42.6	3.0
-	38.7	3.9	-	42.6	-	42.6	3.0
-	-	-	-	(45.5)	4.7	(40.8)	16.9
-	-	-	-	(45.5)	1.3	(44.2)	16.9
-	-	-	-	-	3.4	3.4	-
315.7	-	55.3	-	634.1	10.1	644.2	182.4
282.0	-	45.9	-	369.0	8.4	377.4	176.5
25.4	-	9.1	-	206.8	-	206.8	-
7.0	-	0.1	-	38.7	-	38.7	1.2
1.3	-	-	-	13.5	1.6	15.1	0.8
-	-	-	-	5.9	-	5.9	3.6
-	-	0.2	-	0.2	0.1	0.3	0.3
198.2	-	-	-	386.8	91.2	478	264.6
198.2	-	-	-	386.8	91.2	478	264.6

7 Our payments to governments continued

7.2 Payments made on a project-by-project basis

Taxes paid by classification and project are presented in this section and have been prepared on the basis set out in section 9 'Basis of report preparation' of this Report.

US\$ millions	Corporate income taxes	Royalty-related income taxes	Taxes levied on production	Total taxes paid
Total payments to governments	2,877.0	1,148.1	282.4	4,307.5
Petroleum and Potash	555.9	921.0	267.6	1,744.5
Australia Production Unit – Western Australia	23.6	469.0	5.7	498.3
Australia Production Unit – Victoria	3.5	25.3	–	28.8
Bass Strait	123.2	430.4	–	553.6
North West Shelf	307.3	–	66.6	373.9
Gulf of Mexico	14.8	–	–	14.8
Onshore US (Fayetteville)	–	–	12.2	12.2
Onshore US (Haynesville)	–	–	22.8	22.8
Onshore US (Permian Basin, Eagle Ford)	7.2	–	160.3	167.5
Trinidad and Tobago Production Unit	–	–	–	–
Algeria Joint Interest Unit	–	–	–	–
UK Production Unit ⁽¹⁾	(41.8)	(3.7)	–	(45.5)
Pakistan Production Unit	11.2	–	–	11.2
Head Office – Broken Hill Proprietary (USA) Inc.	–	–	–	–
Head Office – BHP Billiton Petroleum International Pty. Ltd.	101.3	–	–	101.3
Head Office – BHP Petroleum (Argentina) S.A.	3.5	–	–	3.5
Head Office – BHP Billiton Brasil Investimentos Ltda.	0.3	–	–	0.3
Exploration – BHP Billiton Petroleum (New Ventures) Corporation	–	–	–	–
Potash	1.8	–	–	1.8
Closed Mines	–	–	–	–
Copper	796.1	138.9	0.7	935.7
Escondida	768.6	138.9	–	907.5
Pampa Norte	97.0	–	–	97.0
Olympic Dam ⁽²⁾	(60.2)	–	0.7	(59.5)
Head Office – BHP Chile Inc	0.7	–	–	0.7
Head Office – BHP Billiton World Exploration Inc.	–	–	–	–
Head Office – BHP Billiton Mineral Resources Inc.	–	–	–	–
Head Office – RAL Cayman Inc.	7.8	–	–	7.8
Head Office – BHP Peru Holdings Inc.	(17.8)	–	–	(17.8)
Iron Ore	1,887.2	88.2	1.2	1,976.6
Western Australia Iron Ore	1,887.2	88.2	1.2	1,976.6
Head Office – BHP Billiton Brasil Ltda	–	–	–	–
Head Office – BHP Billiton (Liberia) Inc.	–	–	–	–
Coal	(122.6)	–	9.3	(113.3)
Queensland Coal ⁽²⁾	(144.2)	–	1.7	(142.5)
New Mexico	13.0	–	5.8	18.8
New South Wales Energy Coal	10.9	–	1.8	12.7
IndoMet	–	–	–	–
Head Office – BHP Billiton MetCoal Holdings Pty Ltd ⁽²⁾	(2.3)	–	–	(2.3)
Group & Unallocated	(239.6)	–	3.6	(236.0)
Corporate Head Office ⁽²⁾	(217.2)	–	–	(217.2)
Marketing Offices	15.9	–	–	15.9
Nickel West ⁽²⁾	(38.3)	–	3.6	(34.7)
Discontinued Operations	188.6	–	–	188.6
South32 ⁽³⁾	188.6	–	–	188.6

(1) The negative balances are refunds received in FY2015 in respect of Petroleum Revenue Tax (PRT) paid in FY2014 (US\$3.7 million), and corporate income taxes paid in FY2012 (US\$41.8 million). Corporate income tax and PRT paid in respect of FY2014, FY2013 and FY2012 (excluding refunds received in FY2015) was US\$13.9 million, US\$119.2 million, and US\$102.5 million respectively.

(2) The corporate income tax amount does not represent a refund from a government. Instead it represents the allocation of the Australian corporate income tax payment amongst members of the Australian tax consolidation group. For further information, please refer to section 9 'Basis of report preparation'.

(3) Other payments include US\$55.7 million of stamp and transfer duties paid by BHP Billiton in relation to the demerger of South32.

(4) Taxes collected represent tax payments made to governments on behalf of our employees. These payments have been presented in the Report for information purposes only. They are not included in the total payments to governments of US\$7.3 billion.

Royalties	Production entitlements	Fees	Payments for infrastructure improvements	Total payments as defined by the EU Accounting Directive	Other payments	Total payments to governments	Taxes collected ⁽⁴⁾
2,257.9	178.6	111.0	61.9	6,916.9	392.7	7,309.6	1,426.3
492.0	178.6	66.3	61.9	2,543.3	20.2	2,563.5	206.3
-	-	1.8	-	500.1	1.3	501.4	21.2
-	-	-	-	28.8	-	28.8	-
-	-	-	-	553.6	-	553.6	-
182.3	-	-	-	556.2	-	556.2	-
266.8	-	44.6	-	326.2	0.9	327.1	113.0
1.3	-	-	-	13.5	1.6	15.1	5.8
7.3	-	0.1	-	30.2	0.5	30.7	0.1
25.4	-	9.2	-	202.1	-	202.1	31.9
-	38.7	2.3	-	41.0	-	41.0	3.0
-	139.9	-	-	139.9	-	139.9	-
-	-	-	-	(45.5)	-	(45.5)	-
8.9	-	0.1	-	20.2	7.7	27.9	-
-	-	-	-	-	0.5	0.5	9.8
-	-	-	-	101.3	-	101.3	-
-	-	-	-	3.5	-	3.5	-
-	-	-	-	0.3	-	0.3	-
-	-	1.6	-	1.6	-	1.6	-
-	-	6.3	61.9	70.0	7.5	77.5	21.5
-	-	0.3	-	0.3	0.2	0.5	-
49.2	-	16.7	-	1,001.6	110.4	1,112.0	243.0
-	-	8.4	-	915.9	96.3	1,012.2	104.2
-	-	1.7	-	98.7	1.9	100.6	10.5
49.2	-	1.2	-	(9.1)	12.2	3.1	99.4
-	-	3.8	-	4.5	-	4.5	28.9
-	-	1.4	-	1.4	-	1.4	-
-	-	0.2	-	0.2	-	0.2	-
-	-	-	-	7.8	-	7.8	-
-	-	-	-	(17.8)	-	(17.8)	-
1,118.0	-	7.2	-	3,101.8	125.3	3,227.1	440.9
1,118.0	-	7.1	-	3,101.7	120.6	3,222.3	440.9
-	-	-	-	-	4.3	4.3	-
-	-	0.1	-	0.1	0.4	0.5	-
579.1	-	17.0	-	482.8	97.1	579.9	383.8
479.7	-	11.3	-	348.5	75.3	423.8	296.7
15.0	-	1.2	-	35.0	6.6	41.6	23.6
84.3	-	3.3	-	100.3	14.5	114.8	57.6
0.1	-	1.1	-	1.2	-	1.2	1.5
-	-	0.1	-	(2.2)	0.7	(1.5)	4.4
19.6	-	3.8	-	(212.6)	39.7	(172.9)	152.3
-	-	-	-	(217.2)	24.2	(193.0)	86.1
-	-	-	-	15.9	-	15.9	4.0
19.6	-	3.8	-	(11.3)	15.5	4.2	62.2
198.2	-	-	-	386.8	91.2	478	264.6
198.2	-	-	-	386.8	91.2	478	264.6

8 Tax disclosed in our 2015 Financial Statements and reconciliation of taxes paid

8.1 Reconciliation Income Tax Paid to Income Tax Expense

The Corporate income taxes and Royalty-related income taxes presented in section 7 'Our payments to governments', reflect the Income Taxes and Royalty-related taxes paid/refunded as presented in the Consolidated Cash Flow Statement in the BHP Billiton Annual Report 2015. The table below presents a reconciliation of these taxes paid to the Income Tax Expense amount that is presented on an accrual basis in note 4 'Income tax expense' of BHP Billiton's Consolidated Financial Statements.

	2015 US\$M
Income tax and Royalty-related income taxation paid⁽¹⁾	4,025
Tax paid relating to prior periods	(601)
Tax to be refunded	(451)
Taxes paid in-kind (non-cash) ⁽²⁾	258
Other movements	(63)
Tax expense in respect of current period taxable income (Current tax expense)	3,168
Future tax arising from differences between accounting values and tax values (Deferred tax expense)	498
Total taxation expense (Current and Deferred tax expense)⁽³⁾	3,666

(1) As disclosed in section 7 as the combined total of Corporate income taxes of US\$2,877.0 million and Royalty-related income taxes of US\$1,148.1 million.

(2) Taxes in-kind include production entitlements of governments delivered and deliverable in respect of current period production.

(3) As disclosed in BHP Billiton's Consolidated Income Statement shown in the 2015 Annual Report.

Tax expense compared with tax paid

There are a number of reasons why the tax paid in any year will not be the same as the tax charge. As tax instalments are generally based on historical profits, the amount of tax paid in any particular year may differ from the tax accrued on the profits for the year. Further, tax expense includes amounts for deferred taxation, representing timing differences between the accounting for transactions and when tax becomes due, and amounts for uncertain and unresolved tax positions.

8.2 Income tax expense

Extract of note 4 'Income tax expense' of BHP Billiton's Consolidated Financial Statements reconciling statutory effective tax rate to adjusted effective tax rate.

	2015		%
	Profit before taxation US\$M	Income tax expense US\$M	
Statutory effective tax rate	8,056	(3,666)	45.5
Adjusted for:			
Exchange rate movements	-	339	
Exceptional items ⁽¹⁾	3,196	(250)	
Adjusted effective tax rate	11,252	(3,577)	31.8

(1) Exceptional items after tax include impairment of Onshore US assets of US\$1,958 million, impairment of Nickel West assets of US\$290 million and the remeasurement of deferred tax upon repeal of Minerals Resource Rent Tax legislation of US\$698 million.

9 Basis of report preparation

Taxes, royalties and other payments to governments are presented in this Report on a cash paid and cash received basis for the year ended 30 June 2015. This Report includes all such payments paid/received by BHP Billiton in respect of each of our operations, including joint operations. However, it excludes payments paid/received by entities that are accounted for as an equity accounted investment in BHP Billiton's Financial Statements, such as Antamina, Cerrejón and Samarco. This Report also excludes payments to governments paid/received by entities that were demerged during the year to form South32.

Taxes, royalties and other payments, both cash and in-kind (non-cash), to governments, net of refunds, are collectively referred to in this Report as **Total payments to governments** and include the following payment categories:

Corporate income taxes

Payments to governments based on taxable profits under legislated income tax rules. This also includes withholding taxes on dividends, royalties and interest.

Royalty-related income taxes

Payments to governments in relation to profits from the extraction of natural resources, including Minerals Resource Rent Tax (MRRRT), Petroleum Resource Rent Tax (PRRT), and Specific Tax on Mining Activities (STMA). Royalty-related income taxes are presented as income tax in the Consolidated Income Statement in the BHP Billiton Annual Report 2015.

Taxes levied on production

Payments to governments in relation to crude excise, carbon tax and severance tax on the extraction of natural resources. Taxes levied on production are presented as expenses, not income tax, in the Consolidated Income Statement.

Royalties

Payments to governments in relation to revenue or production generated under licence agreements. Royalties are presented as expenses, not income tax, in the Consolidated Income Statement in the BHP Billiton Annual Report 2015. Royalty-related income taxes are excluded from Royalties.

Production entitlements

Payments to governments entitled to a share of production under production sharing agreements. Production entitlements are most often paid in-kind. In-kind payments are measured based on the market value of the commodity on the date of delivery to the government.

Fees

Payments to governments in the form of fees typically levied on the initial or ongoing right to use a geographical area for exploration, development and/or production. Includes licence fees, rental fees, entry fees and other payments for licences and/or concessions.

Payments for infrastructure improvements

Payments to governments for the construction of public infrastructure such as roads, bridges and port facilities.

Dividend payments

Payments to governments with ownership interests in specific assets; not payments to governments as holders of ordinary equity shares in BHP Billiton. There were no dividend payments to governments for the year ended 30 June 2015.

Signature, discovery or production bonuses

Payments to governments upon signing an oil and gas lease, when discovering natural resources, and/or when production has commenced. There were no payments of signature, discovery or production bonuses to governments for the year ended 30 June 2015.

Other payments

Payments to governments under other legislated tax rules such as Payroll Tax, Fringe Benefits Tax, Customs and Excise duties, Property Tax, Land Tax, stamp duties, and Black Lung Tax. These payments are not specifically required to be disclosed by the EU Transparency and Accounting Directive.

Excluded amounts

The following are not included in total payments to governments:

Taxes collected

Tax payments made to governments on behalf of our employees. These payments have been presented in this Report for information purposes only. Where the payroll year-end date is different to BHP Billiton's financial year-end date, the most recent annual data has been used.

Indirect taxes

Tax payments made to, or received from, governments in the nature of Sales Tax, Value Added Tax and Goods and Services Tax.

Penalties and interest

Payments to governments resulting from the imposition of penalties, fees or interest.

Other

Any payment, whether made as a single payment or as a series of related payments below US\$100,000.

9 Basis of report preparation continued

Other

Section 7.2 'Payments made on a project-by-project basis' present corporate income tax amounts for each project/entity taking into account the effects of tax consolidation in Australia. These include the following:

- Losses from one entity can be offset against taxable income of another entity within the same tax consolidated group;
- Only the head entity of a tax consolidated group is liable to make corporate income tax payments to the Australian Taxation Office (the ATO);
- Typically, corporate tax groups allocate the aggregate corporate income tax payments made by the head entity to the ATO amongst entities within the Australian tax consolidated group.

In relation to BHP Billiton, the aggregate of all positive and negative allocations to members of the BHP Billiton Australian tax consolidated groups, together with tax payments made by stand-alone Australian entity taxpayers, totals US\$1,931.2 million in 2015.

We have prepared this Report taking into account the intent of the EU Accounting Directive by reference to the UK *Reports on Payments to Government Regulations 2014*. These Regulations do not come into force until financial years beginning on or after 1 January 2015. As such, BHP Billiton will prepare the first Report that is mandatory under these Regulations for the financial year ending 30 June 2016.

Payments made on a project-by-project basis (section 7.2 'Payments made on a project-by-project basis') present payments by entity when not specifically attributable to a project.

10 Glossary

BHP Billiton

Being both companies in the Dual Listed Company structure, BHP Billiton Limited and BHP Billiton Plc.

Company

BHP Billiton Limited, BHP Billiton Plc and their subsidiaries.

Current tax expense

The amount of **Corporate income tax** and **Royalty-related income tax** and **Production entitlements** currently payable and attributable to the year, measured at rates enacted or substantively enacted at year-end, together with any adjustment to those taxes payable in respect of previous years.

Deferred tax expense

The amount of **Corporate income tax** and **Royalty-related income tax** and **Production entitlements** attributable to the current year but payable in future years provided using the balance sheet liability method.

Adjusted effective tax rate

Comprises Total taxation expense excluding remeasurement of deferred tax assets associated with the Minerals Resource Rent Tax (MRRT), exceptional items and exchange rate movements included in taxation expense divided by Profit before taxation and exceptional items.

Effective income tax and royalties paid rate

Total **Corporate income tax**, **Royalty-related income tax** and **Royalties** paid divided by Profit before taxation, **Royalties** paid and exceptional items.

Group

BHP Billiton Limited, BHP Billiton Plc and their subsidiaries.

Government

Government means any national, regional or local authority of a country, and includes a department, agency or undertaking that is a subsidiary undertaking where the authority is the parent undertaking.

Income tax expense

The total of **Current tax expense** and **Deferred tax expense**.

Project

Consistent with the EU Accounting Directive, a project is defined as the operational activities that are governed by a single contract, licence, lease, concession or similar legal agreements and form the basis for payment liabilities with a government. If multiple such agreements are 'substantially interconnected' they may be considered a project. For these purposes 'substantially interconnected' means forming a set of operationally and geographically integrated contracts, licences, leases or concessions or related agreements with substantially similar terms that are signed with a government, giving rise to payment liabilities.

Report

The Report has been prepared for the financial year from 1 July 2014 to 30 June 2015 of BHP Billiton.

11 Independent Auditor's report

Independent Audit Report to the directors of BHP Billiton

Our opinion

In our opinion, the Total Payments to Governments of US\$7,309.6 million ("Total payments to governments") as presented in section 7.1 and 7.2 of the BHP Billiton Group's (BHP Billiton) Economic Contribution and Payments to Governments Report 2015 (the "Report") is prepared, in all material respects, in accordance with the Basis of report preparation set out in Section 9 of the Report.

We have been engaged by BHP Billiton to audit the Total payments to governments as defined above in the Report.

Basis of report preparation and use of this audit report

Without modifying our opinion, we draw attention to Section 9 of the Report, which sets out the Basis of report preparation. This audit report has been prepared for BHP Billiton in accordance with our engagement letter and is intended solely for the directors of BHP Billiton.

We disclaim any assumption of responsibility for any reliance on this audit report, or the Report to which it relates, to any person other than the directors of BHP Billiton, or for any purpose other than that for which it was prepared.

Management's responsibility

Management is responsible for the preparation and presentation of the Report. Management has established a framework in which the Total payments to governments and other related information in the Report has been prepared. Management has determined that the framework as set out in the Basis of report preparation in Section 9 is appropriate to meet their needs. Management is also responsible for such internal control and processes as management determines is necessary to ensure the preparation and presentation of the Report is free from material misstatement, whether due to fraud or error.

Our responsibility

Our responsibility is to express an opinion on the Total payments to governments based on our audit. We conducted our audit in accordance with Australian Auditing Standards. Those standards require that we comply with relevant ethical requirements and plan and perform the audit to obtain reasonable assurance about whether the Total payments to governments has been prepared in all material respects in accordance with the Basis of report preparation in Section 9 of the Report.

An audit involves performing procedures to obtain audit evidence about the Total payments to governments. The procedures selected depend on the auditor's judgement, including the assessment of the risks of material misstatement of the Total payments to governments, whether due to fraud or error. In making those risk assessments, the auditor considers internal control relevant to the preparation of the Total payments to governments in order to design audit procedures that are appropriate in the circumstances, but not for the purpose of expressing an opinion on the effectiveness of the internal control. An audit also includes evaluating the appropriateness of the Basis of report preparation in relation to the Total payments to governments.

We believe that the audit evidence we have obtained is sufficient and appropriate to provide a basis for our audit opinion.

Independence

In conducting our audit, we have complied with the independence requirements of the Accounting Professional and Ethical Standards Board.



KPMG
Melbourne
10 September 2015

Corporate Directory

BHP Billiton Group Registered Offices

BHP Billiton Limited Australia

171 Collins Street
Melbourne VIC 3000
Telephone 1300 554 757 (within Australia)
+61 3 9609 3333 (outside Australia)
Facsimile +61 3 9609 3015

BHP Billiton Plc United Kingdom

Neathouse Place
London SW1V 1LH
Telephone +44 20 7802 4000
Facsimile +44 20 7802 4111

Group Company Secretary Margaret Taylor

Share Registrars and Transfer Offices

Australia

BHP Billiton Limited Registrar
Computershare Investor Services
Pty Limited
Yarra Falls, 452 Johnston Street
Abbotsford VIC 3067
Postal Address – GPO Box 2975
Melbourne VIC 3001
Telephone 1300 656 780 (within Australia)
+61 3 9415 4020 (outside Australia)
Facsimile +61 3 9473 2460
Email enquiries:
www.investorcentre.com/bhp

New Zealand

Computershare Investor Services Limited
Level 2/159 Hurstmere Road
Takapuna Auckland 0622
Postal Address – Private Bag 92119
Auckland 1142
Telephone +64 9 488 8777
Facsimile +64 9 488 8787

BHP Billiton Corporate Centres

Chile

Cerro El Plomo 6000
Piso 18
Las Condes 7560623
Santiago
Telephone +56 2 2579 5000
Facsimile +56 2 2207 6517

United States

Our agent for service in the United States
is Maria Isabel Reuter at:
1360 Post Oak Boulevard, Suite 150
Houston, TX 77056-3020
Telephone +1 713 961 8500
Facsimile +1 713 961 8400

United Kingdom

BHP Billiton Plc Registrar
Computershare Investor Services PLC
The Pavilions, Bridgwater Road
Bristol BS13 8AE
Postal Address (for general enquiries) –
The Pavilions, Bridgwater Road
Bristol BS99 6ZZ
Telephone +44 844 472 7001
Facsimile +44 870 703 6101
Email enquiries:
www.investorcentre.co.uk/contactus

South Africa

BHP Billiton Plc Branch Register
and Transfer Secretary
Computershare Investor Services
(Pty) Limited
70 Marshall Street
Johannesburg 2001
Postal Address – PO Box 61051
Marshalltown 2107
Telephone +27 11 373 0033
Facsimile +27 11 688 5217
Email enquiries:
web.queries@computershare.co.za
Holders of shares dematerialised into Strate
should contact their CSDP or stockbroker.

Marketing Offices

Singapore

10 Marina Boulevard, #50-01
Marina Bay Financial Centre, Tower 2
Singapore 018983
Telephone +65 6421 6000
Facsimile +65 6421 7000

United States

Computershare Trust Company, N.A.
250 Royall Street
Canton, MA 02021
Postal Address – PO Box 43078
Providence, RI 02940-3078
Telephone +1 888 404 6340
(toll-free within US)
Facsimile +1 312 601 4331
ADR Depository, Transfer Agent and
Registrar Citibank Shareholder Services
PO Box 43077
Providence, RI 02940-3077
Telephone +1 781 575 4555 (outside of US)
+1 877 248 4237 (+1-877-CITIADR)
(toll-free within US)
Facsimile +1 201 324 3284
Email enquiries:
citibank@shareholders-online.com
Website: www.citi.com/dr

BHP Billiton produces a range of publications, which can be viewed or downloaded at www.bhpbilliton.com. If you are a shareholder, you can also elect to receive a paper copy of the Annual Report through the Share Registrar (above).



Annual Report



Sustainability Report

Latest news

Reports and presentations

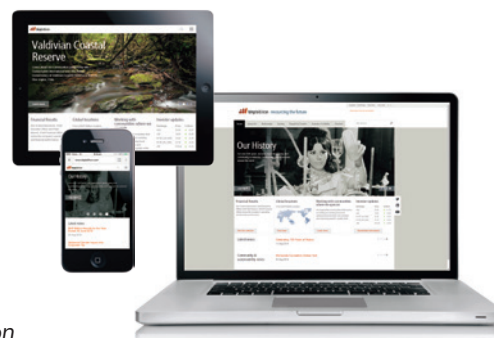
Company overview (including
Our BHP Billiton Charter, Structure
and Governance)

Subscribe to receive news alerts

sent directly to your email address



www.linkedin.com/company/bhp-billiton
www.youtube.com/bhpbilliton
www.twitter.com/bhpbilliton





bhpbilliton